

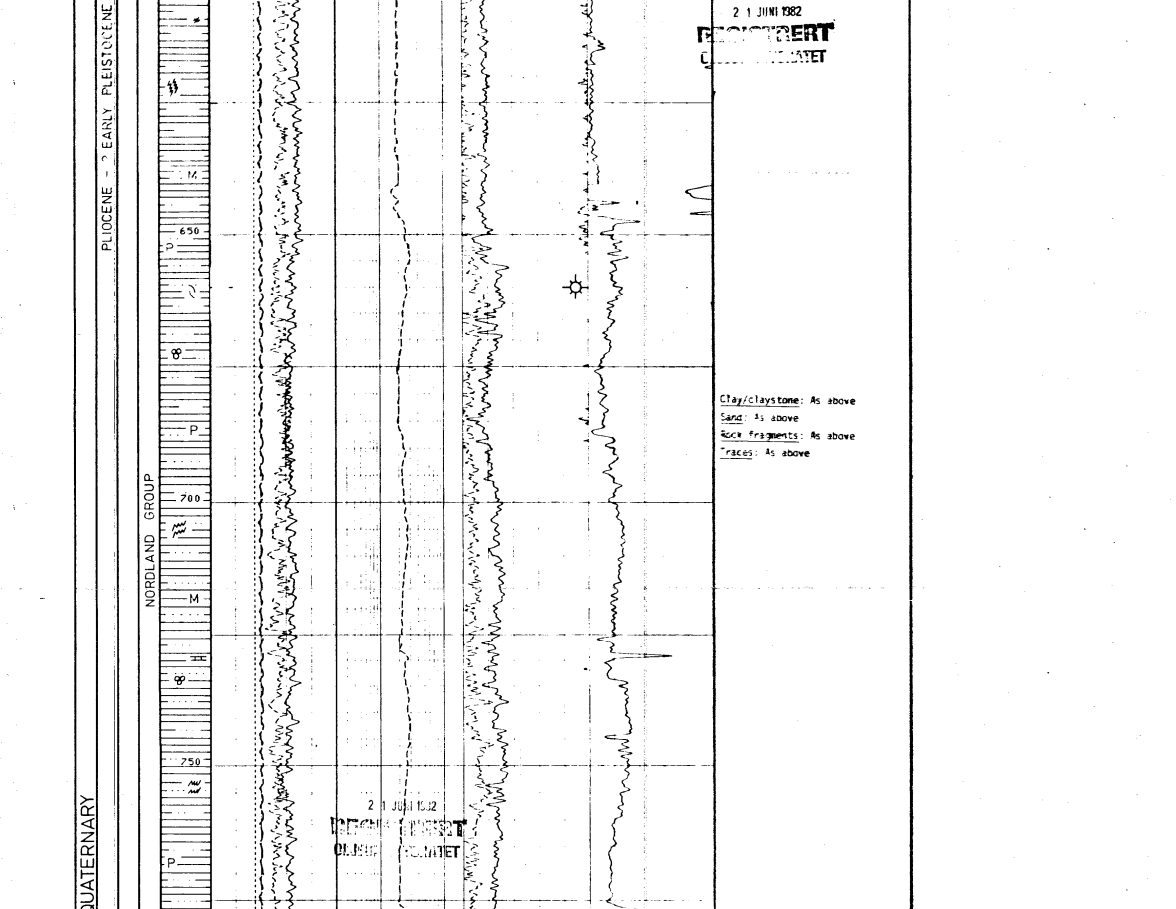
BP-1

STATOIL/SHELL/ARCO/NORSK HYDRO
 Saga Petroleum a.s.
 Composite Well Log
 Enclosure I
 Well: 6507/11-1

COUNTRY	NORWAY	LOCATION	6507/11-1
AREA	NORWEGIAN SEA	LATITUDE	60° 29' 29.5" N
CONVERSION	082	LONGITUDE	02° 04' 02.8" E
DATE APPLIED	SEPTEMBER 1976, 1981	ELEVATIONS	
DATE COMPLETED	DECEMBER 10TH, 1981	RIGS-MAN SEA LEVEL	55 M
TO DATE	NOVEMBER 15TH, 1981	RIGS-SEA FLOOR	553 M
CAMPUSION STATUS	GISCONSOLIDATED WELL, P.W.B.	WATER DEPTH	528 M
WELL STATUS	WEST VENT	TOTAL DEPTH (KNOB)	3328 M
WELL DEPTH	3328 M	WELL DEPTH (SHELL'S DEPTH)	3328 M
WELL DEPTH (LUGGER'S DEPTH)	3328 M		

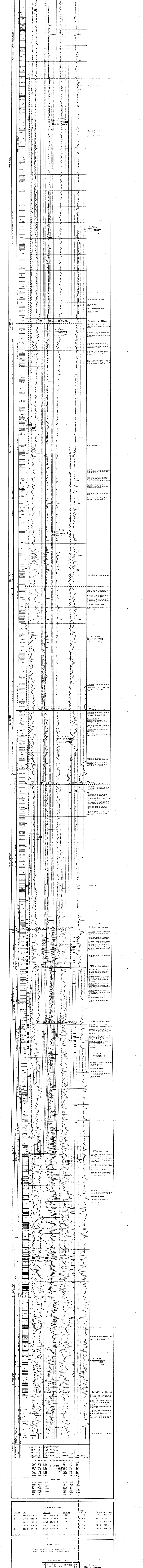
DRILLING CONTRACTOR		MUDLOGGING SERVICE		SCHEMATIC LOGGING	
SPEYER DRILLING AS	EXPLOREX LOGGING	TYPE	RUN	DEPTH	INTERVAL

CASING	SHE DEPTH (M)	SHE SIZE	INTERNAL DIA. (M)	REGISTRYPORT	
				REGISTRYPORT	REGISTRYPORT
30"	408	27 1/2" PULP	351 - 405		
20"	407	27 1/2" PULP	405 - 415		
15 5/8"	1600	17 1/2"	415 - 1655		
9 5/8"	2400	12 1/4"	1655 - 2455		
7" LINEAR FROM 2625		8 1/2"	2455 - 3339		



GEOLOGICAL SYMBOLS		LITHOLOGICAL SYMBOLS		FISICAL SYMBOLS	
[Symbol]	[Description]	[Symbol]	[Description]	[Symbol]	[Description]

WIRELINE LOGS



DEPTH (m)	RESISTIVITY (ohm-m)	RESISTIVITY (ohm-cm)	RESISTIVITY (ohm-ft)
2592.3	2592.3	2592.3	2592.3
2592.8	2592.8	2592.8	2592.8
2602.0	2602.0	2602.0	2602.0
2627.0	2627.0	2627.0	2627.0
2627.7	2627.7	2627.7	2627.7

DEPTH (m)	RESISTIVITY (ohm-m)	RESISTIVITY (ohm-cm)	RESISTIVITY (ohm-ft)
2700.0	2700.0	2700.0	2700.0
2700.5	2700.5	2700.5	2700.5
2701.0	2701.0	2701.0	2701.0
2701.5	2701.5	2701.5	2701.5
2702.0	2702.0	2702.0	2702.0

DEPTH (m)	RESISTIVITY (ohm-m)	RESISTIVITY (ohm-cm)	RESISTIVITY (ohm-ft)
2702.5	2702.5	2702.5	2702.5
2703.0	2703.0	2703.0	2703.0
2703.5	2703.5	2703.5	2703.5
2704.0	2704.0	2704.0	2704.0
2704.5	2704.5	2704.5	2704.5

DEPTH (m)	RESISTIVITY (ohm-m)	RESISTIVITY (ohm-cm)	RESISTIVITY (ohm-ft)
2705.0	2705.0	2705.0	2705.0
2705.5	2705.5	2705.5	2705.5
2706.0	2706.0	2706.0	2706.0
2706.5	2706.5	2706.5	2706.5
2707.0	2707.0	2707.0	2707.0

DEPTH (m)	RESISTIVITY (ohm-m)	RESISTIVITY (ohm-cm)	RESISTIVITY (ohm-ft)
2707.5	2707.5	2707.5	2707.5
2708.0	2708.0	2708.0	2708.0
2708.5	2708.5	2708.5	2708.5
2709.0	2709.0	2709.0	2709.0
2709.5	2709.5	2709.5	2709.5

DEPTH (m)	RESISTIVITY (ohm-m)	RESISTIVITY (ohm-cm)	RESISTIVITY (ohm-ft)
2710.0	2710.0	2710.0	2710.0
2710.5	2710.5	2710.5	2710.5
2711.0	2711.0	2711.0	2711.0
2711.5	2711.5	2711.5	2711.5
2712.0	2712.0	2712.0	2712.0

DEPTH (m)	RESISTIVITY (ohm-m)	RESISTIVITY (ohm-cm)	RESISTIVITY (ohm-ft)
2712.5	2712.5	2712.5	2712.5
2713.0	2713.0	2713.0	2713.0
2713.5	2713.5	2713.5	2713.5
2714.0	2714.0	2714.0	2714.0
2714.5	2714.5	2714.5	2714.5

DEPTH (m)	RESISTIVITY (ohm-m)	RESISTIVITY (ohm-cm)	RESISTIVITY (ohm-ft)
2715.0	2715.0	2715.0	2715.0
2715.5	2715.5	2715.5	2715.5
2716.0	2716.0	2716.0	2716.0
2716.5	2716.5	2716.5	2716.5
2717.0	2717.0	2717.0	2717.0

DEPTH (m)	RESISTIVITY (ohm-m)	RESISTIVITY (ohm-cm)	RESISTIVITY (ohm-ft)
2717.5	2717.5	2717.5	2717.5
2718.0	2718.0	2718.0	2718.0
2718.5	2718.5	2718.5	2718.5
2719.0	2719.0	2719.0	2719.0
2719.5	2719.5	2719.5	2719.5