

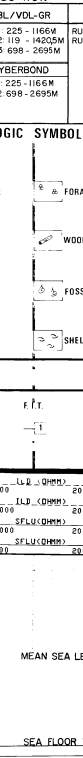
statoil / ESSO/NORSK HYDRO
 15/9-10
COMPLETION LOG
 Scale 1:500

COORDINATES: 58° 19' 42.92" N
 01° 46' 20.61" E
 TOTAL DEPTH: 99M
 DEEPEST PERM: TRIASSIC
 SPUID DATE: SEPTEMBER 15TH 1981
 WELL RELEASE DATE: NOVEMBER 7TH 1981
 RIG STATUS: PLUGGED AND ABANDONED
 RIG: NEPTUNO NORDRAUG
 CONTRACTOR: ROSS DRILLING
 PREPARED BY: J. M. ØSTBY, C. BAKER
 DATE: MAY 7th 1982

CASING DATA:
 30" at 172M
 20" at 472M
 13" at 1165M
 9" at 2705M

FORM CATER / LEAK OFF TESTS:
 L75 G/CC
 L65 G/CC
 L78 G/CC
 EQUIV. MUD WEIGHT

VELOCITY SURVEY:
 61 checkshots with levels from 580 - 3280M KB



LOGS RUN

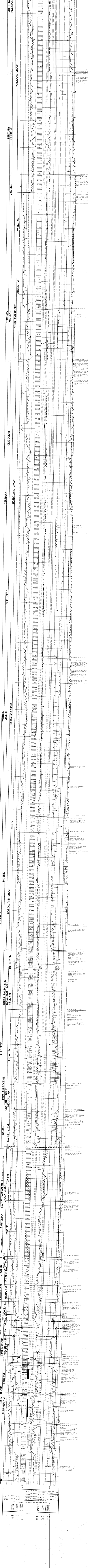
RF/BSH-GR	FOC/GR	HOT	CEL/VOL-GR	CST	RFT
Run 1 2705-3280	Run 1 2705-3280	Run 1 2705-3280	Run 1 2705-3280	Run 1 2705-3280	Run 1 2705-3280
Run 2 2705-3280	Run 2 2705-3280	Run 2 2705-3280	Run 2 2705-3280	Run 2 2705-3280	Run 2 2705-3280
Run 3 2705-3280	Run 3 2705-3280	Run 3 2705-3280	Run 3 2705-3280	Run 3 2705-3280	Run 3 2705-3280

LITHOLOGIC SYMBOLS

SAND	SANDSTONE	SILTSTONE	CLAYSTONE	SHALE	SLT	SH	SLT	SH	SLT	SH
GRAVEL	COAL	COAL LENTIL	TOUF	SH	SH	SH	SH	SH	SH	SH
SH	SH	SH	SH	SH	SH	SH	SH	SH	SH	SH

SEISMIC CORRELATION

DEPTH (M)	LOG CORRELATION	SEISMIC CORRELATION
2705	2705	2705
3280	3280	3280



PARAMETERS

DEPTH (M)	LOG CORRELATION	SEISMIC CORRELATION
2705	2705	2705
3280	3280	3280