

Mr-Six Pressure Survey Report
for
Norske Shell A/S
Well No. 31/2 - 7
2 June 1982
Production Test

SPERRY-SUN PROBE SITUATION 31/2-7 TEST

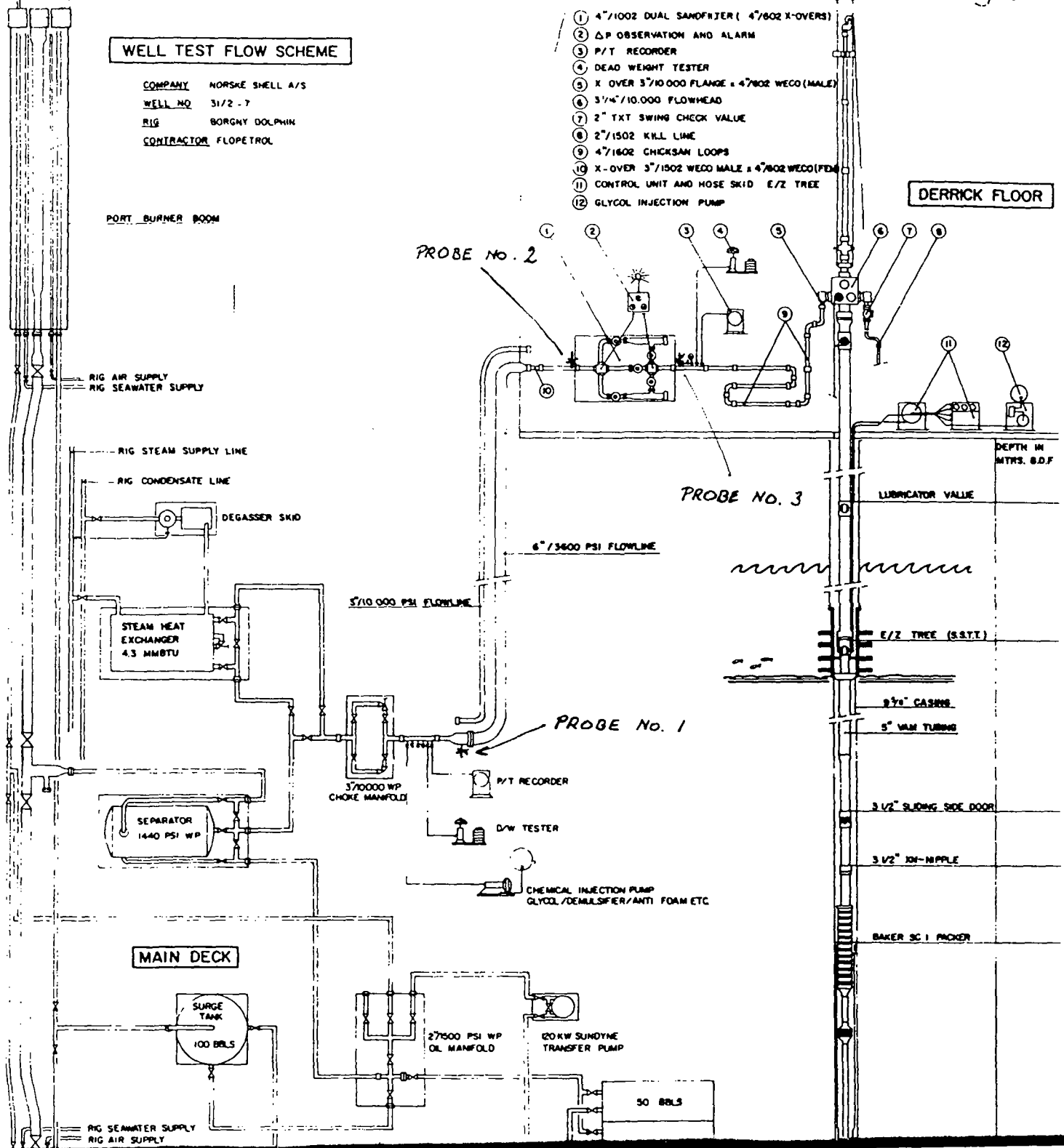
WELL TEST FLOW SCHEME

COMPANY NORSE SHELL A/S
WELL NO 31/2-7
RIG BORGNY DOLPHIN
CONTRACTOR FLOPETROL

- ① 4" / 1002 DUAL SANDFTR (4" / 802 X-OVERS)
- ② ΔP OBSERVATION AND ALARM
- ③ P/T RECORDER
- ④ DEAD WEIGHT TESTER
- ⑤ X OVER 3" / 10,000 FLANGE + 4" / 802 WECO (MALE)
- ⑥ 3" / 4" / 10,000 FLOWHEAD
- ⑦ 2" TXT SWING CHECK VALVE
- ⑧ 2" / 1502 KILL LINE
- ⑨ 4" / 802 CHICKSAN LOOPS
- ⑩ X-OVER 3" / 1502 WECO MALE + 4" / 802 WECO (FEM)
- ⑪ CONTROL UNIT AND HOSE SKID E/Z TREE
- ⑫ GLYCOL INJECTION PUMP

PORT BURNER ROOM

DERRICK FLOOR



MAIN DECK

RIG SEAWATER SUPPLY
 RIG AIR SUPPLY



NORSEA POST OFFICE BOX 138, DUSAVIK, 4001 STAVANGER (04) 54 1985

Company	: Shell	Date	: 2 June 1982
Field	: Troll	Job No.	: MRPG-1254-NOR
Well No.	: 31/2 - 7	Test No.:	: 1
Test Type	: Production	Run No.:	: 1

Gauge Type : Monitor/Recorder Six (Surface Readout)
 No. Of Probes : 3
 Probe Situation: No. 1 - Situated at the choke manifold
 No. 2 - Situated on the rig floor (downstream flow)
 No. 3 - Situated on the rig floor (upstream)

<u>Event</u>	<u>Time</u>	<u>Date</u>
Start probes	23:15	31.05.82
Well opened on 16/64" adj. choke	23:23	31.05.82
Change to 20/64" adj. choke	23:34	31.05.82
Well opened on 23/64" adj. choke	00:05	01.06.82
Choke beamed down to 18/64" adj. choke	00:20	01.06.82
Sand-trap manifold closed	09:25	01.06.82
Well opened on 16/64" adj. choke for clean up	12:55	01.06.82
Changed to 18/64" adj. choke	12:58	01.06.82
Well opened on 16/64" fixed choke	13:13	01.06.82
Change to 20/64" adj. choke	14:07	01.06.82
Change to 20/64" fixed choke	14:15	01.06.82
Change to 20/64" adj. choke	14:42	01.06.82
Change to 16/64" fixed choke	14:50	01.06.82
Switch to flow through separator	16:32	01.06.82
Well opened on 20/64" adj. choke	16:50	01.06.82
Change to 20/64" fixed choke	16:55	01.06.82
By-pass separator	17:00	01.06.82
Open to separator	18:12	01.06.82
Well opened on 28/64" adj. choke	00:19	02.06.82
Change to 28/64" fixed choke	00:25	02.06.82
Switch to flow through sand filter	02:10	02.06.82



NORSEA POST OFFICE BOX 138, DUSAVIK, 4001 STAVANGER (04) 54 1985

Date : 2 June 1982

Job No. : MRPG-1254-NOR

<u>Event</u>	<u>Time</u>	<u>Date</u>
Well opened on 32/64" adj. choke	03:01	02.06.82
By-pass sand filter	08:29	02.06.82
Well opened on 44/64" adj. choke	10:00	02.06.82
Well opened on 16/64" adj. choke	19:16	02.06.82
Change to 32/64" adj. choke	19:19	02.06.82
Change to 32/64" fixed choke	19:20	02.06.82
Flow through separator	20:02	02.06.82
Change choke to 48/64" adj.	00:00	03.06.82
Change choke to 48/64" fixed	00:04	03.06.82
Flow through sand filter	04:02	03.06.82
Change choke to 48/64" adj. and bean up to 1"	04:05	03.06.82
Flow via tank and pump	04:52	03.06.82
By-pass sand filter	04:55	03.06.82
By-pass tank and pump flow directly to burner	05:12	03.06.82
Well opened on 66/64" adj. choke	07:00	03.06.82
Change to 70/64" adj. choke	07:30	03.06.82
Change to 82/64" adj. choke	13:48	03.06.82
Change to 98/64" adj. choke	13:50	03.06.82
Change to 110/64" adj. choke	14:17	03.06.82
Change to 128/64" adj. choke	14:47	03.06.82
Change to 132/64" adj. choke	15:17	03.06.82
Change to 180/64" adj. choke	15:28	03.06.82
Change to 32/64" adj. choke (stop burning)	13:25	04.06.82
Change to 180/64" adj. choke (start burning)	14:10	04.06.82
Change from port to starboard burner	04:02	05.06.82
Close lubricator valve	08:13	05.06.82



NORSEA POST OFFICE BOX 138, DUSAVIK, 4001 STAVANGER (04) 54 1985

Date : 2 June 1982

Job No. : MRPG-1254-NOR

<u>Event</u>	<u>Time</u>	<u>Date</u>
Re-open lubricator valve	08:16	05.06.82
Change from starboard to port burner	10:49	05.06.82
Well shut in at choke manifold	11:31	07.06.82

6/10/82

SPERRY-SUN INTERNATIONAL INC.
MAGNETIC RECORDING PRESSURE GAUGE REPORT

PAGE 1

SHELL
TROLL
31/2-7

OFFSHORE NORWAY
31ST MAY 1982
MRPG-1254-NOR

WELLHEAD PROBE ON RIG FLOOR - DOWNSTREAM. (INITIAL FLOW TEST)

DELTA TIME	GAUGE PRESSURE	TIME	DATE	
0.000	372.000	23:30	31- 5-82	
0.267	285.000	23:45		WELL OPEN ON 20/64" ADJ. CHOKE
0.367	254.000	23:51		
0.517	219.000	0: 0	1- 6-82	
0.550	206.000	0: 2		
0.583	199.000	0: 4		
0.667	181.000	0: 9		WELL OPEN ON 23/64" ADJ. CHOKE
0.767	163.000	0:15		
0.800	159.000	0:17		
0.817	157.000	0:18		
0.833	154.000	0:19		
0.850	152.000	0:20		
0.867	149.000	0:21		WELL OPEN ON 18/64" ADJ. CHOKE
0.883	146.000	0:22		
0.900	144.000	0:23		
0.917	142.000	0:24		
0.933	139.000	0:25		
0.950	136.000	0:26		
0.967	134.000	0:27		
0.983	132.000	0:28		
1.000	129.000	0:29		
1.017	127.000	0:30		
1.033	125.000	0:31		
1.050	123.000	0:32		
1.267	88.000	0:45		
1.517	63.000	1: 0		
1.767	40.000	1:15		
2.017	25.000	1:30		
2.267	19.000	1:45		
2.517	14.000	2: 0		
2.767	23.000	2:15		
3.017	62.000	2:30		
3.267	108.000	2:45		
3.517	57.000	3: 0		
3.767	23.000	3:15		
4.017	14.000	3:30		
4.267	6.000	3:45		
4.517	12.000	4: 0		

6/10/82

SPERRY-SUN INTERNATIONAL INC.
MAGNETIC RECORDING PRESSURE GAUGE REPORT

PAGE 1

SHELL
TROLL
31/2-7

OFFSHORE NORWAY
31ST MAY 1982
MRPG-1254-NOR

WELLHEAD PROBE AT CHOKE MANIFOLD. (INITIAL FLOW TEST)

DELTA TIME	GAUGE PRESSURE	TIME	DATE	
0.000	392.000	23:30	31- 5-82	
0.267	305.000	23:45		WELL OPEN ON 20/64" ADJ. CHOKE
0.367	276.000	23:51		
0.517	241.000	0: 0	1- 6-82	
0.550	229.000	0: 2		
0.583	222.000	0: 4		
0.667	204.000	0: 9		WELL OPEN ON 23/64" ADJ. CHOKE
0.767	185.000	0:15		
0.800	181.000	0:17		
0.817	179.000	0:18		
0.833	176.000	0:19		
0.850	174.000	0:20		
0.867	171.000	0:21		WELL OPEN ON 18/64" ADJ. CHOKE
0.883	169.000	0:22		
0.900	166.000	0:23		
0.917	164.000	0:24		
0.933	161.000	0:25		
0.950	159.000	0:26		
0.967	156.000	0:27		
0.983	154.000	0:28		
1.000	151.000	0:29		
1.017	149.000	0:30		
1.033	146.000	0:31		
1.050	144.000	0:32		
1.267	110.000	0:45		
1.517	86.000	1: 0		
1.767	61.000	1:15		
2.017	48.000	1:30		
2.267	41.000	1:45		
2.517	37.000	2: 0		
2.767	46.000	2:15		
3.017	86.000	2:30		
3.267	120.000	2:45		
3.517	69.000	3: 0		
3.767	32.000	3:15		
4.017	25.000	3:30		
4.267	17.000	3:45		
4.517	23.000	4: 0		

6/10/82

SPERRY-SUN INTERNATIONAL INC.
MAGNETIC RECORDING PRESSURE GAUGE REPORT

PAGE 1

SHELL
TROLL
31/2-7

OFFSHORE NORWAY
31ST MAY 1982
MRPG-1254-NOR

WELLHEAD PROBE ON RIG FLOOR - UPSTREAM. (INITIAL FLOW TEST)

DELTA TIME	GAUGE PRESSURE	TIME	DATE	
0.000	379.000	23:30	31- 5-82	
0.267	292.000	23:45		WELL OPEN ON 20/64" ADJ. CHOKE
0.367	263.000	23:51		
0.517	228.000	0: 0	1- 6-82	
0.550	215.000	0: 2		
0.583	208.000	0: 4		
0.667	190.000	0: 9		WELL OPEN 23/64" ADJ. CHOKE
0.767	172.000	0:15		
0.800	168.000	0:17		
0.817	165.000	0:18		
0.833	163.000	0:19		
0.850	161.000	0:20		
0.867	158.000	0:21		WELL OPEN ON 18/64" ADJ. CHOKE
0.883	156.000	0:22		
0.900	153.000	0:23		
0.917	150.000	0:24		
0.933	148.000	0:25		
0.950	145.000	0:26		
0.967	143.000	0:27		
0.983	140.000	0:28		
1.000	137.000	0:29		
1.017	136.000	0:30		
1.033	133.000	0:31		
1.050	131.000	0:32		
1.267	96.000	0:45		
1.517	72.000	1: 0		
1.767	47.000	1:15		
2.017	33.000	1:30		
2.267	26.000	1:45		
2.517	22.000	2: 0		
2.767	33.000	2:15		
3.017	73.000	2:30		
3.267	118.000	2:45		
3.517	67.000	3: 0		
3.767	31.000	3:15		
4.017	23.000	3:30		
4.267	16.000	3:45		
4.517	22.000	4: 0		

6/11/82

SPERRY-SUN INTERNATIONAL INC.
MAGNETIC RECORDING PRESSURE GAUGE REPORT

PAGE 1

SHELL
TROLL
31/2-7

OFFSHORE NORWAY
31ST MAY 1982
MRPG-1254-NOR

WELLHEAD PROBE AT CHOKE MANIFOLD. (SECOND FLOW TEST)

DELTA TIME	GAUGE PRESSURE	TIME	DATE	
0.000	361.000	12:52	1- 6-82	
0.158	323.000	13: 1		WELL OPEN ON 16/64" ADJ. CHOKE
0.325	318.000	13:11		CHANGE TO 18/64" ADJ. CHOKE
0.492	295.000	13:21		CHANGE TO 16/64" FIXED CHOKE
0.658	287.000	13:31		
0.825	272.000	13:41		
0.992	260.000	13:51		
1.158	257.000	14: 1		
1.325	238.000	14:11		WELL OPEN ON 20/64" ADJ. CHOKE
1.492	241.000	14:21		CHANGE TO 20/64" FIXED CHOKE
1.658	279.000	14:31		
1.825	375.000	14:41		CHANGE TO 20/64" ADJ. CHOKE
1.992	335.000	14:51		WELL OPEN ON 16/64" ADJ. CHOKE
2.158	294.000	15: 1		CHANGE TO 16/64" FIXED CHOKE
2.325	303.000	15:11		
2.492	296.000	15:21		
2.658	293.000	15:31		
2.825	294.000	15:41		
2.992	295.000	15:51		
3.135	294.000	16: 0		
3.294	299.000	16: 9		
3.461	304.000	16:19		
3.628	306.000	16:29		
3.794	313.000	16:39		FLOW THROUGH SEPARATOR
3.961	318.000	16:49		WELL OPEN ON 20/64" ADJ. CHOKE
4.128	324.000	16:59		CHANGE TO 20/64" FIXED CHOKE
4.294	353.000	17: 9		BY-PASS SEPARATOR
4.461	379.000	17:19		
4.628	370.000	17:29		
4.794	385.000	17:39		
4.961	407.000	17:49		
5.128	466.000	17:59		
5.294	488.000	18: 9		
5.461	491.000	18:19		
5.628	483.000	18:29		FLOW THROUGH SEPARATOR
5.794	478.000	18:39		
5.961	439.000	18:49		
6.128	458.000	18:59		
6.294	481.000	19: 9		
6.461	492.000	19:19		
6.628	501.000	19:29		
6.794	507.000	19:39		
6.961	513.000	19:49		
7.128	516.000	19:59		
7.294	523.000	20: 9		
7.461	527.000	20:19		

6/11/82

SPERRY-SUN INTERNATIONAL INC.
MAGNETIC RECORDING PRESSURE GAUGE REPORT

PAGE 2

SHELL
TROLL
31/2-7

OFFSHORE NORWAY
31ST MAY 1982
MRPG-1254-NOR

WELLHEAD PROBE AT CHOKE MANIFOLD. (SECOND FLOW TEST)

DELTA TIME	GAUGE PRESSURE	TIME	DATE	
7.628	529.000	20:29	1- 6-82	
7.872	534.000	20:44		
7.883	535.000	20:44		
8.124	538.000	20:59		
8.167	537.000	21: 1		
8.282	541.000	21: 8		
8.285	540.000	21: 9		
8.287	541.000	21: 9		
8.292	539.000	21: 9		
8.303	540.000	21:10		
8.306	540.000	21:10		
8.314	540.000	21:10		
8.317	541.000	21:10		
8.319	540.000	21:11		
8.322	540.000	21:11		
8.325	540.000	21:11		
8.329	540.000	21:11		
8.375	539.000	21:14		
8.631	541.000	21:29		
8.856	549.000	21:43		
9.112	551.000	21:58		
9.362	553.000	22:13		
9.612	553.000	22:28		
9.624	557.000	22:29		
9.874	559.000	22:44		
10.124	560.000	22:59		
10.374	562.000	23:14		
10.624	563.000	23:29		
10.874	568.000	23:44		
11.124	568.000	23:59		
11.374	569.000	0:14	2- 6-82	
11.624	555.000	0:29		WELL OPEN ON 28/64" FIXED CHOK
11.874	558.000	0:44		
12.124	559.000	0:59		
12.374	549.000	1:14		
12.624	556.000	1:29		
12.874	537.000	1:44		
13.124	534.000	1:59		
13.374	523.000	2:14		FLOW THROUGH SAND-FILTER
13.624	497.000	2:29		
13.874	463.000	2:44		
14.124	465.000	2:59		
14.374	458.000	3:14		WELL OPEN ON 32/64" ADJ. CHOKE
14.624	462.000	3:29		
14.874	530.000	3:44		
15.124	523.000	3:59		
15.374	517.000	4:14		

6/11/82

SPERRY-SUN INTERNATIONAL INC.
MAGNETIC RECORDING PRESSURE GAUGE REPORT

PAGE 3

SHELL
TROLL
31/2-7

OFFSHORE NORWAY
31ST MAY 1982
MRPG-1254-NOR

WELLHEAD PROBE AT CHOKE MANIFOLD. (SECOND FLOW TEST)

DELTA TIME	GAUGE PRESSURE	TIME	DATE
15.624	517.000	4:29	2- 6-82
15.874	506.000	4:44	
16.124	496.000	4:59	
16.374	493.000	5:14	
16.624	490.000	5:29	
16.874	492.000	5:44	
17.124	487.000	5:59	
17.374	481.000	6:14	
17.624	551.000	6:29	
17.874	544.000	6:44	
18.124	544.000	6:59	
18.374	534.000	7:14	
18.624	486.000	7:29	
18.874	469.000	7:44	
19.124	452.000	7:59	
19.374	435.000	8:14	
19.624	522.000	8:29	
19.874	520.000	8:44	
20.124	508.000	8:59	
20.374	488.000	9:14	
20.624	469.000	9:29	
20.874	458.000	9:44	
21.124	460.000	9:59	
21.375	480.000	10:14	
21.626	484.000	10:29	
21.878	485.000	10:44	
22.129	486.000	10:59	
22.381	486.000	11:14	
22.632	487.000	11:29	
22.883	487.000	11:44	
23.135	488.000	12: 0	
23.386	488.000	12:15	
23.637	489.000	12:30	
23.889	489.000	12:45	
24.140	490.000	13: 0	

BY-PASS SAND FILTER

WELL OPEN ON 44/64" ADJ. CHOKE

END OF CURRENT DATA

6/11/82

SPERRY-SUN INTERNATIONAL INC.
MAGNETIC RECORDING PRESSURE GAUGE REPORT

PAGE 1

SHELL
TROLL
31/2-7

OFFSHORE NORWAY
31ST MAY 1982
MRPG-1254-NDR

WELLHEAD PROBE ON RIG FLOOR - DOWNSTREAM. (SECOND FLOW TEST)

DELTA TIME	GAUGE PRESSURE	TIME	DATE
0.000	336.000	12:52	1- 6-82
0.158	307.000	13: 1	
0.325	294.000	13:11	
0.492	270.000	13:21	WELL OPEN ON 16/64" ADJ. CHOKE
0.658	262.000	13:31	CHANGE TO 18/64" ADJ. CHOKE
0.825	247.000	13:41	CHANGE TO 16/64" FIXED CHOKE
0.992	236.000	13:51	
1.158	232.000	14: 1	
1.325	211.000	14:11	CHANGE TO 20/64" ADJ. CHOKE
1.492	217.000	14:21	CHANGE TO 20/64" FIXED CHOKE
1.658	255.000	14:31	
1.825	352.000	14:41	
1.992	323.000	14:51	CHANGE TO 20/64" ADJ. CHOKE
2.158	282.000	15: 1	CHANGE TO 16/64" FIXED CHOKE
2.325	292.000	15:11	
2.492	284.000	15:21	
2.658	281.000	15:31	
2.825	282.000	15:41	
2.992	283.000	15:51	
3.135	282.000	16: 0	
3.294	287.000	16: 9	
3.461	292.000	16:19	
3.628	294.000	16:29	
3.794	301.000	16:39	FLOW THROUGH SEPARATOR
3.961	308.000	16:49	
4.128	313.000	16:59	WELL OPEN ON 20/64" ADJ. CHOKE
4.294	341.000	17: 9	CHANGE TO 20/64" FIXED CHOKE
4.461	368.000	17:19	BY-PASS SEPARATOR
4.628	358.000	17:29	
4.794	373.000	17:39	
4.961	396.000	17:49	
5.128	455.000	17:59	
5.294	477.000	18: 9	
5.461	480.000	18:19	FLOW THROUGH SEPARATOR
5.628	472.000	18:29	
5.794	466.000	18:39	
5.961	427.000	18:49	
6.128	447.000	18:59	
6.294	470.000	19: 9	
6.461	481.000	19:19	
6.628	489.000	19:29	
6.794	496.000	19:39	
6.961	501.000	19:49	
7.128	505.000	19:59	
7.294	512.000	20: 9	
7.461	516.000	20:19	

6/11/82

SPERRY-SUN INTERNATIONAL INC.
MAGNETIC RECORDING PRESSURE GAUGE REPORT

PAGE 2

SHELL
TROLL
31/2-7

OFFSHORE NORWAY
31ST MAY 1982
MRPG-1254-NOR

WELLHEAD PROBE ON RIG FLOOR - DOWNSTREAM. (SECOND FLOW TEST)

DELTA TIME	GAUGE PRESSURE	TIME	DATE
7.628	518.000	20:29	1- 6-82
7.872	523.000	20:44	
7.883	523.000	20:44	
8.124	538.000	20:59	
8.167	526.000	21: 1	
8.282	529.000	21: 8	
8.285	529.000	21: 9	
8.287	529.000	21: 9	
8.292	528.000	21: 9	
8.303	528.000	21:10	
8.306	528.000	21:10	
8.314	528.000	21:10	
8.317	529.000	21:10	
8.319	528.000	21:11	
8.322	528.000	21:11	
8.325	528.000	21:11	
8.329	528.000	21:11	
8.375	527.000	21:14	
8.631	533.000	21:29	
8.856	537.000	21:43	
9.112	540.000	21:58	
9.362	541.000	22:13	
9.612	545.000	22:28	
9.624	545.000	22:29	
9.874	547.000	22:44	
10.124	548.000	22:59	
10.374	550.000	23:14	
10.624	552.000	23:29	
10.874	556.000	23:44	
11.124	556.000	23:59	
11.374	557.000	0:14	2- 6-82
11.624	542.000	0:29	WELL OPEN ON 28/64" FIXED CHOKE
11.874	546.000	0:44	
12.124	547.000	0:59	
12.374	536.000	1:14	
12.624	543.000	1:29	
12.874	524.000	1:44	
13.124	520.000	1:59	
13.374	509.000	2:14	FLOW THROUGH SAND-FILTER
13.624	485.000	2:29	
13.874	449.000	2:44	
14.124	454.000	2:59	
14.374	444.000	3:14	WELL OPEN ON 32/64" ADJ. CHOKE
14.624	447.000	3:29	
14.874	517.000	3:44	
15.124	510.000	3:59	
15.374	503.000	4:14	

6/11/82

SPERRY-SUN INTERNATIONAL INC.
MAGNETIC RECORDING PRESSURE GAUGE REPORT

PAGE 3

SHELL
TROLL
31/2-7

OFFSHORE NORWAY
31ST MAY 1982
MRPG-1254-NOR

WELLHEAD PROBE ON RIG FLOOR - DOWNSTREAM. (SECOND FLOW TEST)

DELTA TIME	GAUGE PRESSURE	TIME	DATE
15.624	504.000	4:29	2- 6-82
15.874	491.000	4:44	
16.124	481.000	4:59	
16.374	479.000	5:14	
16.624	475.000	5:29	
16.874	477.000	5:44	
17.124	472.000	5:59	
17.374	467.000	6:14	
17.624	536.000	6:29	
17.874	531.000	6:44	
18.124	530.000	6:59	
18.374	518.000	7:14	
18.624	570.000	7:29	
18.874	457.000	7:44	
19.124	436.000	7:59	
19.374	419.000	8:14	
19.624	507.000	8:29	
19.874	504.000	8:44	
20.124	494.000	8:59	
20.374	468.000	9:14	
20.624	455.000	9:29	
20.874	444.000	9:44	
21.124	446.000	9:59	
21.375	462.000	10:14	
21.626	468.000	10:29	
21.878	469.000	10:44	
22.129	470.000	10:59	
22.381	471.000	11:14	
22.632	470.000	11:29	
22.883	471.000	11:44	
23.135	473.000	12: 0	
23.386	473.000	12:15	
23.637	473.000	12:30	
23.889	473.000	12:45	
24.140	473.000	13: 0	

BY-PASS SAND FILTER

WELL OPEN ON 44/64" ADJ. CHOKE

END OF CURRENT DATA

6/11/82

SPERRY-SUN INTERNATIONAL INC.
MAGNETIC RECORDING PRESSURE GAUGE REPORT

PAGE 1

SHELL
TROLL
31/2-7

OFFSHORE NORWAY
31ST MAY 1982
MRPG-1254-NOR

WELLHEAD PROBE ON RIG FLOOR - UPSTREAM. (SECOND FLOW TEST)

DELTA TIME	GAUGE PRESSURE	TIME	DATE	
0.000	346.000	12:52	1- 6-82	
0.158	318.000	13: 1		WELL OPEN ON 16/64" ADJ. CHOKE
0.325	304.000	13:11		CHANGE TO 18/64" ADJ. CHOKE
0.492	282.000	13:21		CHANGE TO 16/64" FIXED CHOKE
0.658	272.000	13:31		
0.825	257.000	13:41		
0.992	247.000	13:51		
1.158	244.000	14: 1		
1.325	232.000	14:11		WELL OPEN ON 20/64" ADJ. CHOKE
1.492	228.000	14:21		CHANGE TO 20/64" FIXED CHOKE
1.658	267.000	14:31		
1.825	363.000	14:41		CHANGE TO 20/64" ADJ. CHOKE
1.992	334.000	14:51		WELL OPEN ON 16/64"
2.158	293.000	15: 1		FIXED CHOKE
2.325	304.000	15:11		
2.492	295.000	15:21		
2.658	293.000	15:31		
2.825	293.000	15:41		
2.992	295.000	15:51		
3.135	293.000	16: 0		
3.294	299.000	16: 9		
3.461	304.000	16:19		
3.628	306.000	16:29		
3.794	313.000	16:39		FLOW THROUGH SEPARATOR
3.961	318.000	16:49		WELL OPEN ON 20/64" ADJ. CHOKE
4.128	325.000	16:59		CHANGE TO 20/64" FIXED CHOKE
4.294	353.000	17: 9		BY-PASS SEPARATOR
4.461	380.000	17:19		
4.628	370.000	17:29		
4.794	386.000	17:39		
4.961	408.000	17:49		
5.128	468.000	17:59		
5.294	489.000	18: 9		
5.461	492.000	18:19		
5.628	484.000	18:29		FLOW THROUGH SEPARATOR
5.794	479.000	18:39		
5.961	439.000	18:49		
6.128	459.000	18:59		
6.294	482.000	19: 9		
6.461	493.000	19:19		
6.628	502.000	19:29		
6.794	508.000	19:39		
6.961	514.000	19:49		
7.128	517.000	19:59		
7.294	524.000	20: 9		
7.461	528.000	20:19		

6/11/82

SPERRY-SUN INTERNATIONAL INC.
MAGNETIC RECORDING PRESSURE GAUGE REPORT

PAGE 2

SHELL
TROLL
31/2-7

OFFSHORE NORWAY
31ST MAY 1982
MRPG-1254-NOR

WELLHEAD PROBE ON RIG FLOOR - UPSTREAM. (SECOND FLOW TEST)

DELTA TIME	GAUGE PRESSURE	TIME	DATE
7.628	530.000	20:29	1- 6-82
7.872	535.000	20:44	
7.883	536.000	20:44	
8.124	539.000	20:59	
8.167	538.000	21: 1	
8.282	542.000	21: 8	
8.285	541.000	21: 9	
8.287	541.000	21: 9	
8.292	540.000	21: 9	
8.303	540.000	21:10	
8.306	541.000	21:10	
8.314	540.000	21:10	
8.317	542.000	21:10	
8.319	541.000	21:11	
8.322	541.000	21:11	
8.325	540.000	21:11	
8.329	540.000	21:11	
8.375	540.000	21:14	
8.631	546.000	21:29	
8.856	550.000	21:43	
9.112	554.000	21:58	
9.362	554.000	22:13	
9.612	558.000	22:28	
9.624	559.000	22:29	
9.874	560.000	22:44	
10.124	561.000	22:59	
10.374	562.000	23:14	
10.624	564.000	23:29	
10.874	569.000	23:44	
11.124	569.000	23:59	
11.374	570.000	0:14	2- 6-82
11.624	555.000	0:29	WELL OPEN ON 28/64"
11.874	559.000	0:44	FIXED CHOKE
12.124	560.000	0:59	
12.374	549.000	1:14	
12.624	556.000	1:29	
12.874	537.000	1:44	
13.124	533.000	1:59	
13.374	526.000	2:14	FLOW THROUGH SAND-FILTER
13.624	515.000	2:29	
13.874	492.000	2:44	
14.124	514.000	2:59	
14.374	536.000	3:14	WELL OPEN ON 32/64" ADJ. CHOKE
14.624	544.000	3:29	
14.874	544.000	3:44	
15.124	545.000	3:59	
15.374	546.000	4:14	

6/11/82

SPERRY-SUN INTERNATIONAL INC.
MAGNETIC RECORDING PRESSURE GAUGE REPORT

PAGE 3

SHELL
TROLL
31/2-7

OFFSHORE NORWAY
31ST MAY 1982
MRPG-1254-NOR

WELLHEAD PROBE ON RIG FLOOR - UPSTREAM. (SECOND FLOW TEST)

DELTA TIME	GAUGE PRESSURE	TIME	DATE
15.624	550.000	4:29	2- 6-82
15.874	554.000	4:44	
16.124	555.000	4:59	
16.374	559.000	5:14	
16.624	561.000	5:29	
16.874	564.000	5:44	
17.124	566.000	5:59	
17.374	564.000	6:14	
17.624	562.000	6:29	
17.874	561.000	6:44	
18.124	565.000	6:59	
18.374	564.000	7:14	
18.624	530.000	7:29	
18.874	529.000	7:44	
19.124	529.000	7:59	
19.374	537.000	8:14	
19.624	520.000	8:29	BY-PASS SAND FILTER
19.874	517.000	8:44	
20.124	507.000	8:59	
20.374	481.000	9:14	
20.624	467.000	9:29	
20.874	456.000	9:44	
21.124	458.000	9:59	
21.375	476.000	10:14	WELL OPEN ON 44/64" ADJ. CHOKE
21.626	481.000	10:29	
21.878	481.000	10:44	
22.129	483.000	10:59	
22.381	483.000	11:14	
22.632	482.000	11:29	
22.883	484.000	11:44	
23.135	485.000	12: 0	
23.386	485.000	12:15	
23.637	486.000	12:30	
23.889	485.000	12:45	
24.140	486.000	13: 0	END OF CURRENT DATA

6/11/82

SPERRY-SUN INTERNATIONAL INC.
MAGNETIC RECORDING PRESSURE GAUGE REPORT

PAGE 1

SHELL
TROLL
31/2-7

OFFSHORE NORWAY
31ST MAY 1982
MRPG-1254-NOR

WELLHEAD PROBE ON RIG FLOOR - UPSTREAM. (INITIAL BUILD-UP TEST)

DELTA TIME	GAUGE PRESSURE	TIME	DATE
0.000	486.000	13: 3	2- 6-82 WELL SHUT IN AT CHOKE MANIFOLD
0.001	486.000	13: 3	
0.003	486.000	13: 3	
0.004	486.000	13: 3	
0.006	485.000	13: 3	
0.008	486.000	13: 3	
0.010	486.000	13: 3	
0.011	486.000	13: 3	
0.012	486.000	13: 3	
0.014	486.000	13: 3	
0.015	485.000	13: 3	
0.017	486.000	13: 3	
0.018	490.000	13: 4	
0.019	498.000	13: 4	
0.021	498.000	13: 4	
0.022	512.000	13: 4	
0.024	517.000	13: 4	
0.025	518.000	13: 4	
0.026	521.000	13: 4	
0.028	525.000	13: 4	
0.029	527.000	13: 4	
0.031	532.000	13: 4	
0.032	536.000	13: 4	
0.033	538.000	13: 4	
0.035	542.000	13: 5	
0.036	546.000	13: 5	
0.037	548.000	13: 5	
0.039	552.000	13: 5	
0.040	556.000	13: 5	
0.042	558.000	13: 5	
0.043	561.000	13: 5	
0.044	566.000	13: 5	
0.046	567.000	13: 5	
0.047	570.000	13: 5	
0.049	573.000	13: 5	
0.050	575.000	13: 5	
0.051	578.000	13: 6	
0.053	581.000	13: 6	
0.054	582.000	13: 6	
0.056	585.000	13: 6	
0.057	587.000	13: 6	
0.058	588.000	13: 6	
0.060	591.000	13: 6	
0.061	594.000	13: 6	
0.062	595.000	13: 6	
0.064	600.000	13: 6	

6/11/82

SPERRY-SUN INTERNATIONAL INC.
MAGNETIC RECORDING PRESSURE GAUGE REPORT

PAGE 2

SHELL
TROLL
31/2-7

OFFSHORE NORWAY
31ST MAY 1982
MRPG-1254-NOR

WELLHEAD PROBE ON RIG FLOOR - UPSTREAM. (INITIAL BUILD-UP TEST)

DELTA TIME	GAUGE PRESSURE	TIME	DATE
0.065	601.000	13: 6	2- 6-82
0.067	603.000	13: 6	
0.068	605.000	13: 7	
0.069	606.000	13: 7	
0.071	608.000	13: 7	
0.072	610.000	13: 7	
0.074	611.000	13: 7	
0.075	613.000	13: 7	
0.076	614.000	13: 7	
0.078	615.000	13: 7	
0.079	617.000	13: 7	
0.081	618.000	13: 7	
0.082	619.000	13: 7	
0.083	621.000	13: 7	
0.085	622.000	13: 8	
0.086	623.000	13: 8	
0.087	624.000	13: 8	
0.089	626.000	13: 8	
0.090	626.000	13: 8	
0.092	628.000	13: 8	
0.093	629.000	13: 8	
0.094	629.000	13: 8	
0.096	630.000	13: 8	
0.097	632.000	13: 8	
0.099	632.000	13: 8	
0.100	633.000	13: 8	
0.101	634.000	13: 9	
0.103	635.000	13: 9	
0.104	636.000	13: 9	
0.106	637.000	13: 9	
0.107	637.000	13: 9	
0.108	638.000	13: 9	
0.110	639.000	13: 9	
0.111	639.000	13: 9	
0.112	639.000	13: 9	
0.114	641.000	13: 9	
0.115	641.000	13: 9	
0.117	641.000	13: 9	
0.118	643.000	13:10	
0.119	643.000	13:10	
0.121	643.000	13:10	
0.122	644.000	13:10	
0.124	644.000	13:10	
0.125	645.000	13:10	
0.126	645.000	13:10	
0.128	646.000	13:10	
0.129	646.000	13:10	

6/11/82

SPERRY-SUN INTERNATIONAL INC.
MAGNETIC RECORDING PRESSURE GAUGE REPORT

PAGE 3

SHELL
TROLL
31/2-7

OFFSHORE NORWAY
31ST MAY 1982
MRPG-1254-NOR

WELLHEAD PROBE ON RIG FLOOR - UPSTREAM. (INITIAL BUILD-UP TEST)

DELTA TIME	GAUGE PRESSURE	TIME	DATE
0.131	647.000	13:10	2- 6-82
0.132	647.000	13:10	
0.133	648.000	13:10	
0.135	648.000	13:11	
0.136	648.000	13:11	
0.137	648.000	13:11	
0.139	649.000	13:11	
0.140	649.000	13:11	
0.142	650.000	13:11	
0.143	650.000	13:11	
0.144	650.000	13:11	
0.146	650.000	13:11	
0.147	651.000	13:11	
0.149	651.000	13:11	
0.150	651.000	13:11	
0.151	652.000	13:12	
0.153	652.000	13:12	
0.154	652.000	13:12	
0.156	652.000	13:12	
0.157	653.000	13:12	
0.158	653.000	13:12	
0.160	653.000	13:12	
0.161	653.000	13:12	
0.162	653.000	13:12	
0.164	654.000	13:12	
0.165	654.000	13:12	
0.167	654.000	13:12	
0.168	654.000	13:13	
0.169	654.000	13:13	
0.171	655.000	13:13	
0.172	655.000	13:13	
0.174	655.000	13:13	
0.175	655.000	13:13	

6/11/82

SPERRY-SUN INTERNATIONAL INC.
MAGNETIC RECORDING PRESSURE GAUGE REPORT

PAGE 1

SHELL
TROLL
31/2-7

OFFSHORE NORWAY
31ST MAY 1982
MRPG-1254-NOR

WELLHEAD PROBE AT CHOKE MANIFOLD. (THIRD FLOW TEST)

DELTA TIME	GAUGE PRESSURE	TIME	DATE
0.000	262.000	14: 5	3- 6-82
0.267	244.000	14:20	WELL OPEN ON 110/64"
0.517	241.000	14:35	ADJ. CHOKE
0.767	239.000	14:50	CHANGE TO 128/64" ADJ. CHOKE
1.017	239.000	15: 5	
1.267	231.000	15:20	CHANGE TO 132/64" ADJ. CHOKE
1.517	222.000	15:35	CHANGE TO 180/64" ADJ. CHOKE
1.767	222.000	15:50	
2.017	218.000	16: 5	
2.267	219.000	16:20	
2.517	220.000	16:35	
2.767	221.000	16:50	
3.017	218.000	17: 5	
3.267	219.000	17:20	
3.517	219.000	17:35	
3.767	220.000	17:50	
4.017	218.000	18: 5	
4.267	219.000	18:20	
4.517	221.000	18:35	
4.767	219.000	18:50	
5.017	219.000	19: 5	
5.267	219.000	19:20	
5.517	220.000	19:35	
5.767	220.000	19:50	
6.017	220.000	20: 5	
6.267	220.000	20:20	
6.442	219.000	20:31	
6.933	218.000	21: 0	
7.433	218.000	21:30	
7.933	222.000	22: 0	
8.433	221.000	22:30	
8.933	221.000	23: 0	
9.433	219.000	23:30	
9.933	221.000	0: 0	4- 6-82
10.433	220.000	0:30	
10.933	220.000	1: 0	
11.433	220.000	1:30	
11.933	219.000	2: 0	
12.433	220.000	2:30	
12.933	218.000	3: 0	
13.433	219.000	3:30	
13.933	219.000	4: 0	
14.433	218.000	4:30	
14.933	213.000	5: 0	
15.433	215.000	5:30	
15.933	217.000	6: 0	

6/11/82

SPERRY-SUN INTERNATIONAL INC.
MAGNETIC RECORDING PRESSURE GAUGE REPORT

PAGE 2

SHELL
TROLL
31/2-7

OFFSHORE NORWAY
31ST MAY 1982
MRPG-1254-NOR

WELLHEAD PROBE AT CHOKE MANIFOLD. (THIRD FLOW TEST)

DELTA TIME	GAUGE PRESSURE	TIME	DATE
16.433	215.000	6:30	4- 6-82
16.933	217.000	7: 0	
17.433	216.000	7:30	
17.933	216.000	8: 0	
18.433	215.000	8:30	
18.933	216.000	9: 0	
19.433	215.000	9:30	
19.933	214.000	10: 0	
20.433	214.000	10:30	
20.933	215.000	11: 0	
21.433	214.000	11:30	
21.933	213.000	12: 0	
22.433	213.000	12:30	
22.933	211.000	13: 0	
23.433	349.000	13:30	
23.933	384.000	14: 0	
24.433	228.000	14:30	
24.933	205.000	15: 0	
25.433	213.000	15:30	
25.933	212.000	16: 0	
26.433	211.000	16:30	
26.933	214.000	17: 0	
27.433	211.000	17:30	
27.933	212.000	18: 0	
28.433	213.000	18:30	
28.933	212.000	19: 0	
29.433	213.000	19:30	
29.933	213.000	20: 0	
30.433	214.000	20:30	
30.933	214.000	21: 0	
31.433	215.000	21:30	
31.933	216.000	22: 0	
32.433	216.000	22:30	
32.933	218.000	23: 0	
33.433	214.000	23:30	
33.933	216.000	0: 0	5- 6-82
34.433	214.000	0:30	
34.933	217.000	1: 0	
35.433	215.000	1:30	
35.933	215.000	2: 0	
36.433	214.000	2:30	
36.933	216.000	3: 0	
37.433	216.000	3:30	
37.933	216.000	4: 0	
38.433	215.000	4:30	
38.933	217.000	5: 0	
39.433	216.000	5:30	

WELL OPEN ON 32/64" ADJ.
CHOKE
CHANGE TO 180/64" CHOKE

6/11/82

SPERRY-SUN INTERNATIONAL INC.
MAGNETIC RECORDING PRESSURE GAUGE REPORT

PAGE 3

SHELL
TROLL
31/2-7

OFFSHORE NORWAY
31ST MAY 1982
MRPG-1254-NOR

WELLHEAD PROBE AT CHOKE MANIFOLD. (THIRD FLOW TEST)

DELTA TIME	GAUGE PRESSURE	TIME	DATE
39.933	216.000	6: 0	5- 6-82
40.433	217.000	6:30	
40.933	216.000	7: 0	
41.433	216.000	7:30	
41.933	216.000	8: 0	
42.433	211.000	8:30	
42.933	224.000	9: 0	
43.433	216.000	9:30	
43.933	210.000	10: 0	
44.433	218.000	10:30	
44.933	215.000	11: 0	
45.433	212.000	11:30	
45.933	215.000	12: 0	
46.433	216.000	12:30	
46.933	215.000	13: 0	
47.433	214.000	13:30	
47.933	212.000	14: 0	
48.433	213.000	14:30	
48.933	214.000	15: 0	
49.433	213.000	15:30	
49.933	208.000	16: 0	
50.433	210.000	16:30	
50.933	206.000	17: 0	
51.433	208.000	17:30	
51.933	208.000	18: 0	
52.433	206.000	18:30	
52.933	209.000	19: 0	
53.433	210.000	19:30	
53.933	209.000	20: 0	
54.433	208.000	20:30	
54.933	208.000	21: 0	
55.433	208.000	21:30	
55.933	208.000	22: 0	
56.433	208.000	22:30	
56.933	210.000	23: 0	
57.433	209.000	23:30	
57.933	210.000	0: 0	6- 6-82
58.433	210.000	0:30	
58.933	210.000	1: 0	
59.433	210.000	1:30	
59.933	211.000	2: 0	
60.433	210.000	2:30	
60.933	210.000	3: 0	
61.433	210.000	3:30	
61.933	211.000	4: 0	
62.433	211.000	4:30	
62.933	210.000	5: 0	

6/11/82

SPERRY-SUN INTERNATIONAL INC.
MAGNETIC RECORDING PRESSURE GAUGE REPORT

PAGE 4

SHELL
TROLL
31/2-7

OFFSHORE NORWAY
31ST MAY 1982
MRPG-1254-NOR

WELLHEAD PROBE AT CHOKE MANIFOLD. (THIRD FLOW TEST)

DELTA TIME	GAUGE PRESSURE	TIME	DATE
63.433	210.000	5:30	6- 6-82
63.933	212.000	6: 0	
64.433	211.000	6:30	
64.933	209.000	7: 0	
65.433	211.000	7:30	
65.933	212.000	8: 0	
66.433	209.000	8:30	
66.933	211.000	9: 0	
67.433	214.000	9:30	
67.933	212.000	10: 0	
68.433	210.000	10:30	
68.933	212.000	11: 0	
69.433	212.000	11:30	
69.933	212.000	12: 0	
70.433	212.000	12:30	
70.933	213.000	13: 0	
71.433	211.000	13:30	
71.933	210.000	14: 0	
72.433	210.000	14:30	
72.933	210.000	15: 0	
73.433	210.000	15:30	
73.933	212.000	16: 0	
74.433	211.000	16:30	
74.933	211.000	17: 0	
75.433	212.000	17:30	
75.933	210.000	18: 0	
76.433	208.000	18:30	
76.933	211.000	19: 0	
77.433	210.000	19:30	
77.933	210.000	20: 0	
78.433	212.000	20:30	
78.933	212.000	21: 0	
79.433	213.000	21:30	
79.933	212.000	22: 0	
80.433	213.000	22:30	
80.933	213.000	23: 0	
81.433	213.000	23:30	
81.933	213.000	0: 0	7- 6-82
82.433	214.000	0:30	
82.933	213.000	1: 0	
83.433	213.000	1:30	
83.933	212.000	2: 0	
84.433	214.000	2:30	
84.933	213.000	3: 0	
85.433	212.000	3:30	
85.933	214.000	4: 0	
86.433	212.000	4:30	

6/11/82

SPERRY-SUN INTERNATIONAL INC.
MAGNETIC RECORDING PRESSURE GAUGE REPORT

PAGE 5

SHELL
TROLL
31/2-7

OFFSHORE NORWAY
31ST MAY 1982
MRPG-1254-NOR

WELLHEAD PROBE AT CHOKE MANIFOLD. (THIRD FLOW TEST)

DELTA TIME	GAUGE PRESSURE	TIME	DATE
86.933	212.000	5: 0	7- 6-82
87.433	213.000	5:30	
87.933	213.000	6: 0	
88.433	212.000	6:30	
88.933	212.000	7: 0	
89.433	212.000	7:30	
89.933	212.000	8: 0	
90.433	211.000	8:30	
90.933	212.000	9: 0	
91.433	210.000	9:30	
91.933	211.000	10: 0	
92.433	212.000	10:30	
92.933	213.000	11: 0	

END OF FLOW PERIOD

6/11/82

SPERRY-SUN INTERNATIONAL INC.
MAGNETIC RECORDING PRESSURE GAUGE REPORT

PAGE 2

SHELL
TROLL
31/2-7

OFFSHORE NORWAY
31ST MAY 1982
MRPG-1254-NOR

WELLHEAD PROBE ON RIG FLOOR - DOWNSTREAM. (THIRD FLOW TEST)

DELTA TIME	GAUGE PRESSURE	TIME	DATE	
11.517	308.000	6:45	3- 6-82	
11.767	308.000	7: 0		WELL OPEN ON 66/64" ADJ. CHOKE
12.017	301.000	7:15		
12.267	303.000	7:30		CHANGE TO 70/64" ADJ. CHOKE
12.517	294.000	7:45		
12.767	293.000	8: 0		
13.017	292.000	8:15		
13.267	282.000	8:30		
13.517	274.000	8:45		
13.767	272.000	9: 0		
14.017	273.000	9:15		
14.267	274.000	9:30		
14.517	273.000	9:45		
14.767	276.000	10: 0		
15.017	277.000	10:15		
15.267	276.000	10:30		
15.517	276.000	10:45		
15.767	276.000	11: 0		
16.017	276.000	11:15		
16.267	277.000	11:30		
16.767	276.000	12: 0		
17.017	276.000	12:15		
17.267	276.000	12:30		
17.422	276.000	12:40		
17.607	276.000	12:51		
17.851	276.000	13: 6		
18.101	275.000	13:21		
18.351	275.000	13:36		
18.597	263.000	13:50		WELL OPEN ON 82/64" ADJ. CHOKE
18.849	259.000	14: 5		CHANGE TO 98/64" ADJ. CHOKE
19.099	241.000	14:20		AND OPEN TO 110/64" ADJ.
19.349	237.000	14:35		CHANGE TO 128/64" CHOKE
19.599	235.000	14:50		
19.849	236.000	15: 5		
20.099	229.000	15:20		CHANGE TO 132/64" ADJ. CHOKE
20.349	220.000	15:35		CHANGE TO 180/64" ADJ. CHOKE
20.599	218.000	15:50		
20.849	215.000	16: 5		
21.099	216.000	16:20		
21.349	218.000	16:35		
21.599	217.000	16:50		
21.849	216.000	17: 5		
22.099	216.000	17:20		
22.349	216.000	17:35		
22.599	217.000	17:50		
22.849	217.000	18: 5		
23.099	216.000	18:20		

6/11/82

SPERRY-SUN INTERNATIONAL INC.
MAGNETIC RECORDING PRESSURE GAUGE REPORT

PAGE 3

SHELL
TROLL
31/2-7

OFFSHORE NORWAY
31ST MAY 1982
MRPG-1254-NOR

WELLHEAD PROBE ON RIG FLOOR - DOWNSTREAM. (THIRD FLOW TEST)

DELTA TIME	GAUGE PRESSURE	TIME	DATE
23.349	217.000	18:35	3- 6-82
23.599	216.000	18:50	
23.849	216.000	19: 5	
24.099	216.000	19:20	
24.349	217.000	19:35	
24.599	217.000	19:50	
24.849	217.000	20: 5	
25.099	217.000	20:20	
25.274	218.000	20:31	
25.765	216.000	21: 0	
26.265	215.000	21:30	
26.765	220.000	22: 0	
27.265	217.000	22:30	
27.765	219.000	23: 0	
28.265	218.000	23:30	
28.765	218.000	0: 0	4- 6-82
29.265	218.000	0:30	
29.765	217.000	1: 0	
30.265	217.000	1:30	
30.765	216.000	2: 0	
31.265	216.000	2:30	
31.765	216.000	3: 0	
32.265	216.000	3:30	
32.765	215.000	4: 0	
33.265	215.000	4:30	
33.765	213.000	5: 0	
34.265	214.000	5:30	
34.765	214.000	6: 0	
35.265	213.000	6:30	
35.765	214.000	7: 0	
36.265	213.000	7:30	
36.765	213.000	8: 0	
37.265	213.000	8:30	
37.765	213.000	9: 0	
38.265	213.000	9:30	
38.765	213.000	10: 0	
39.265	212.000	10:30	
39.765	211.000	11: 0	
40.265	211.000	11:30	
40.765	212.000	12: 0	
41.265	210.000	12:30	
41.765	209.000	13: 0	
42.265	337.000	13:30	
42.765	371.000	14: 0	
43.265	225.000	14:30	
43.765	203.000	15: 0	
44.265	209.000	15:30	

WELL OPEN ON 32/64" ADJ. CHOKE
CHANGE TO 180/64" CHOKE

6/11/82

SPERRY-SUN INTERNATIONAL INC.
MAGNETIC RECORDING PRESSURE GAUGE REPORT

PAGE 4

SHELL
TROLL
31/2-7

OFFSHORE NORWAY
31ST MAY 1982
MRPG-1254-NOR

WELLHEAD PROBE ON RIG FLOOR - DOWNSTREAM. (THIRD FLOW TEST)

DELTA TIME	GAUGE PRESSURE	TIME	DATE
44.765	209.000	16: 0	4- 6-82
45.265	208.000	16:30	
45.765	210.000	17: 0	
46.265	209.000	17:30	
46.765	210.000	18: 0	
47.265	210.000	18:30	
47.765	209.000	19: 0	
48.265	210.000	19:30	
48.765	209.000	20: 0	
49.265	210.000	20:30	
49.765	211.000	21: 0	
50.265	212.000	21:30	
50.765	213.000	22: 0	
51.265	212.000	22:30	
51.765	213.000	23: 0	
52.265	211.000	23:30	
52.765	213.000	0: 0	5- 6-82
53.265	212.000	0:30	
53.765	214.000	1: 0	
54.265	212.000	1:30	
54.765	212.000	2: 0	
55.265	211.000	2:30	
55.765	212.000	3: 0	
56.265	213.000	3:30	
56.765	212.000	4: 0	
57.265	213.000	4:30	
57.765	214.000	5: 0	
58.265	212.000	5:30	
58.765	213.000	6: 0	
59.265	213.000	6:30	
59.765	211.000	7: 0	
60.265	213.000	7:30	
60.765	213.000	8: 0	
61.265	210.000	8:30	
61.765	220.000	9: 0	
62.265	214.000	9:30	
62.765	207.000	10: 0	
63.265	214.000	10:30	
63.765	212.000	11: 0	
64.265	210.000	11:30	
64.765	213.000	12: 0	
65.265	213.000	12:30	
65.765	211.000	13: 0	
66.265	211.000	13:30	
66.765	210.000	14: 0	
67.265	210.000	14:30	
67.765	210.000	15: 0	

6/11/82

SPERRY-SUN INTERNATIONAL INC.
MAGNETIC RECORDING PRESSURE GAUGE REPORT

PAGE 5

SHELL
TROLL
31/2-7

OFFSHORE NORWAY
31ST MAY 1982
MRPG-1254-NOR

WELLHEAD PROBE ON RIG FLOOR - DOWNSTREAM. (THIRD FLOW TEST)

DELTA TIME	GAUGE PRESSURE	TIME	DATE
68.265	210.000	15:30	5- 6-82
68.765	206.000	16: 0	
69.265	207.000	16:30	
69.765	203.000	17: 0	
70.265	206.000	17:30	
70.765	206.000	18: 0	
71.265	204.000	18:30	
71.765	204.000	19: 0	
72.265	207.000	19:30	
72.765	205.000	20: 0	
73.265	205.000	20:30	
73.765	205.000	21: 0	
74.265	206.000	21:30	
74.765	206.000	22: 0	
75.265	206.000	22:30	
75.765	207.000	23: 0	
76.265	206.000	23:30	
76.765	205.000	0: 0	6- 6-82
77.265	206.000	0:30	
77.765	206.000	1: 0	
78.265	207.000	1:30	
78.765	207.000	2: 0	
79.265	207.000	2:30	
79.765	206.000	3: 0	
80.265	206.000	3:30	
80.765	207.000	4: 0	
81.265	207.000	4:30	
81.765	207.000	5: 0	
82.265	207.000	5:30	
82.765	208.000	6: 0	
83.265	207.000	6:30	
83.765	207.000	7: 0	
84.265	208.000	7:30	
84.765	208.000	8: 0	
85.265	207.000	8:30	
85.765	206.000	9: 0	
86.265	211.000	9:30	
86.765	210.000	10: 0	
87.265	209.000	10:30	
87.765	208.000	11: 0	
88.265	210.000	11:30	
88.765	209.000	12: 0	
89.265	207.000	12:30	
89.765	209.000	13: 0	
90.265	209.000	13:30	
90.765	208.000	14: 0	
91.265	207.000	14:30	

6/11/82

SPERRY-SUN INTERNATIONAL INC.
MAGNETIC RECORDING PRESSURE GAUGE REPORT

PAGE 6

SHELL
TROLL
31/2-7

OFFSHORE NORWAY
31ST MAY 1982
MRPG-1254-NO

WELLHEAD PROBE ON RIG FLOOR - DOWNSTREAM. (THIRD FLOW TEST)

DELTA TIME	GAUGE PRESSURE	TIME	DATE
91.765	209.000	15: 0	6- 6-82
92.265	208.000	15:30	
92.765	208.000	16: 0	
93.265	208.000	16:30	
93.765	208.000	17: 0	
94.265	209.000	17:30	
94.765	207.000	18: 0	
95.265	207.000	18:30	
95.765	207.000	19: 0	
96.265	208.000	19:30	
96.765	209.000	20: 0	
97.265	209.000	20:30	
97.765	209.000	21: 0	
98.265	209.000	21:30	
98.765	209.000	22: 0	
99.265	209.000	22:30	
99.765	209.000	23: 0	
100.265	210.000	23:30	
100.765	210.000	0: 0	7- 6-82
101.265	210.000	0:30	
101.765	210.000	1: 0	
102.265	210.000	1:30	
102.765	210.000	2: 0	
103.265	211.000	2:30	
103.765	210.000	3: 0	
104.265	210.000	3:30	
104.765	211.000	4: 0	
105.265	210.000	4:30	
105.765	209.000	5: 0	
106.265	210.000	5:30	
106.765	210.000	6: 0	
107.265	209.000	6:30	
107.765	209.000	7: 0	
108.265	210.000	7:30	
108.765	210.000	8: 0	
109.265	210.000	8:30	
109.765	210.000	9: 0	
110.265	208.000	9:30	
110.765	208.000	10: 0	
111.265	209.000	10:30	
111.765	211.000	11: 0	

END OF FLOW PERIOD

6/11/82

SPERRY-SUN INTERNATIONAL INC.
MAGNETIC RECORDING PRESSURE GAUGE REPORT

PAGE 1

SHELL
TROLL
31/2-7

OFFSHORE NORWAY
31ST MAY 1982
MRPG-1254-NOR

WELLHEAD PROBE ON RIG FLOOR - UPSTREAM. (THIRD FLOW TEST)

DELTA TIME	GAUGE PRESSURE	TIME	DATE	
0.000	626.000	16:40	2- 6-82	WELL FLOWING ON 44/64" ADJ. CH
0.267	627.000	16:55		
0.517	629.000	17:10		
0.767	630.000	17:25		
0.854	631.000	17:31		
1.093	632.000	17:45		
1.343	634.000	18: 0		
1.593	636.000	18:15		
1.843	638.000	18:30		
2.093	644.000	18:45		
2.343	643.000	19: 0		
2.593	563.000	19:15		CHANGE TO 16/64" ADJ. CHOKE
2.843	495.000	19:30		CHANGE TO 32/64" FIXED CHOKE
3.093	499.000	19:45		
3.343	510.000	20: 0		
3.593	529.000	20:15		FLOW THROUGH SEPARATOR
3.843	540.000	20:30		
4.093	544.000	20:45		
4.343	546.000	21: 0		
4.593	547.000	21:15		
4.843	547.000	21:30		
5.093	549.000	21:45		
5.343	550.000	22: 0		
5.593	550.000	22:15		
5.843	551.000	22:30		
6.093	551.000	22:45		
6.343	552.000	23: 0		
6.593	553.000	23:15		
6.843	554.000	23:30		
7.093	553.000	23:45		
7.343	554.000	0: 0	3- 6-82	WELL OPEN ON 48/64" ADJ. CHOKE
7.593	482.000	0:15		CHANGE TO 48/64" FIXED CHOKE
7.843	442.000	0:30		
8.093	447.000	0:45		
8.343	442.000	1: 0		
8.593	441.000	1:15		
8.843	442.000	1:30		
9.093	442.000	1:45		
9.343	442.000	2: 0		
9.593	442.000	2:15		
9.843	441.000	2:30		
10.093	441.000	2:45		
10.343	441.000	3: 0		
10.593	441.000	3:15		
10.843	442.000	3:30		
11.093	440.000	3:45		

6/11/82

SPERRY-SUN INTERNATIONAL INC.
MAGNETIC RECORDING PRESSURE GAUGE REPORT

PAGE 2

SHELL
TROLL
31/2-7

OFFSHORE NORWAY
31ST MAY 1982
MRPG-1254-NOR

WELLHEAD PROBE ON RIG FLOOR - UPSTREAM. (THIRD FLOW TEST)

DELTA TIME	GAUGE PRESSURE	TIME	DATE	
11.343	441.000	4: 0	3- 6-82	FLOW THROUGH SAND FILTER
11.593	357.000	4:15		WELL OPEN ON 48/64" CHOKE
11.843	332.000	4:30		AND INCREASE TO 64/64" ADJ.
12.093	341.000	4:45		
12.343	331.000	5: 0		BY-PASS SAND FILTER
12.593	332.000	5:15		
12.843	323.000	5:30		
13.093	321.000	5:45		
13.343	322.000	6: 0		
13.593	324.000	6:15		
13.843	322.000	6:30		
14.093	323.000	6:45		
14.343	323.000	7: 0		WELL OPEN ON 66/64" ADJ. CHOKE
14.593	316.000	7:15		
14.843	317.000	7:30		CHANGE TO 70/64" ADJ. CHOKE
15.093	310.000	7:45		
15.343	307.000	8: 0		
15.593	305.000	8:15		
15.843	297.000	8:30		
16.093	289.000	8:45		
16.343	286.000	9: 0		
16.593	288.000	9:15		
16.843	289.000	9:30		
17.093	288.000	9:45		
17.343	290.000	10: 0		
17.593	293.000	10:15		
17.843	293.000	10:30		
18.093	290.000	10:45		
18.343	291.000	11: 0		
18.593	290.000	11:15		
18.843	290.000	11:30		
19.093	291.000	11:45		
19.343	289.000	12: 0		
19.843	289.000	12:30		
20.093	289.000	12:45		
20.343	291.000	13: 0		
20.499	289.000	13: 9		
20.683	290.000	13:20		
20.928	290.000	13:35		
21.178	288.000	13:50		
21.428	290.000	14: 5		WELL OPEN ON 98/64" ADJ. CHOKE
21.674	278.000	14:20		CHANGE TO 110/64" ADJ. CHOKE
21.925	273.000	14:35		
22.175	256.000	14:50		
22.425	250.000	15: 5		
22.675	249.000	15:20		CHANGE TO 128/64" ADJ. CHOKE
22.925	251.000	15:35		CHANGE TO 132/64" ADJ. CHOKE

6/11/82

SPERRY-SUN INTERNATIONAL INC.
MAGNETIC RECORDING PRESSURE GAUGE REPORT

PAGE 3

SHELL
TROLL
31/2-7

OFFSHORE NORWAY
31ST MAY 1982
MRPG-1254-NOR

WELLHEAD PROBE ON RIG FLOOR - UPSTREAM. (THIRD FLOW TEST)

DELTA TIME	GAUGE PRESSURE	TIME	DATE
23.175	243.000	15:50	3- 6-82 CHANGE TO 180/64" ADJ. CHOKE
23.425	235.000	16: 5	
23.675	234.000	16:20	
23.925	230.000	16:35	
24.175	232.000	16:50	
24.425	233.000	17: 5	
24.675	233.000	17:20	
24.925	230.000	17:35	
25.175	231.000	17:50	
25.425	231.000	18: 5	
25.675	232.000	18:20	
25.925	231.000	18:35	
26.175	231.000	18:50	
26.425	233.000	19: 5	
26.675	232.000	19:20	
26.925	231.000	19:35	
27.175	231.000	19:50	
27.425	232.000	20: 5	
27.675	233.000	20:20	
27.925	232.000	20:35	
28.175	233.000	20:50	
28.350	232.000	21: 0	
28.842	231.000	21:30	
29.342	230.000	22: 0	
29.842	236.000	22:30	
30.342	233.000	23: 0	
30.842	234.000	23:30	
31.342	233.000	0: 0	4- 6-82
31.842	233.000	0:30	
32.342	233.000	1: 0	
32.842	233.000	1:30	
33.342	233.000	2: 0	
33.842	232.000	2:30	
34.342	232.000	3: 0	
34.842	231.000	3:30	
35.342	232.000	4: 0	
35.842	229.000	4:30	
36.342	230.000	5: 0	
36.842	227.000	5:30	
37.342	228.000	6: 0	
37.842	230.000	6:30	
38.342	228.000	7: 0	
38.842	228.000	7:30	
39.342	227.000	8: 0	
39.842	229.000	8:30	
40.342	227.000	9: 0	
40.842	229.000	9:30	

6/11/82

SPERRY-SUN INTERNATIONAL INC.
MAGNETIC RECORDING PRESSURE GAUGE REPORT

PAGE 4

SHELL
TROLL
31/2-7

OFFSHORE NORWAY
31ST MAY 1982
MRPG-1254-NOR

WELLHEAD PROBE ON RIG FLOOR - UPSTREAM. (THIRD FLOW TEST)

DELTA TIME	GAUGE PRESSURE	TIME	DATE
41.342	227.000	10: 0	4- 6-82
41.842	226.000	10:30	
42.342	225.000	11: 0	
42.842	226.000	11:30	
43.342	224.000	12: 0	
43.842	224.000	12:30	
44.342	224.000	13: 0	
44.842	224.000	13:30	
45.342	349.000	14: 0	
45.842	384.000	14:30	
46.342	241.000	15: 0	
46.842	216.000	15:30	
47.342	224.000	16: 0	
47.842	225.000	16:30	
48.342	222.000	17: 0	
48.842	226.000	17:30	
49.342	224.000	18: 0	
49.842	225.000	18:30	
50.342	225.000	19: 0	
50.842	224.000	19:30	
51.342	224.000	20: 0	
51.842	224.000	20:30	
52.342	226.000	21: 0	
52.842	227.000	21:30	
53.342	227.000	22: 0	
53.842	229.000	22:30	
54.342	228.000	23: 0	
54.842	229.000	23:30	
55.342	227.000	0: 0	5- 6-82
55.842	228.000	0:30	
56.342	227.000	1: 0	
56.842	230.000	1:30	
57.342	227.000	2: 0	
57.842	228.000	2:30	
58.342	227.000	3: 0	
58.842	227.000	3:30	
59.342	228.000	4: 0	
59.842	227.000	4:30	
60.342	228.000	5: 0	
60.842	228.000	5:30	
61.342	228.000	6: 0	
61.842	229.000	6:30	
62.342	227.000	7: 0	
62.842	228.000	7:30	
63.342	228.000	8: 0	
63.842	222.000	8:30	
64.342	235.000	9: 0	

WELL OPEN ON 32/64" ADJ. CHOKE

WELL OPEN ON 180/64" CHOKE

6/11/82

SPERRY-SUN INTERNATIONAL INC.
MAGNETIC RECORDING PRESSURE GAUGE REPORT

PAGE 5

SHELL
TROLL
31/2-7

OFFSHORE NORWAY
31ST MAY 1982
MRPG-1254-NOR

WELLHEAD PROBE ON RIG FLOOR - UPSTREAM. (THIRD FLOW TEST)

DELTA TIME	GAUGE PRESSURE	TIME	DATE
64.842	227.000	9:30	5- 6-82
65.342	222.000	10: 0	
65.842	229.000	10:30	
66.342	227.000	11: 0	
66.842	224.000	11:30	
67.342	228.000	12: 0	
67.842	228.000	12:30	
68.342	226.000	13: 0	
68.842	226.000	13:30	
69.342	225.000	14: 0	
69.842	226.000	14:30	
70.342	225.000	15: 0	
70.842	224.000	15:30	
71.342	222.000	16: 0	
71.842	223.000	16:30	
72.342	218.000	17: 0	
72.842	221.000	17:30	
73.342	222.000	18: 0	
73.842	219.000	18:30	
74.342	221.000	19: 0	
74.842	223.000	19:30	
75.342	221.000	20: 0	
75.842	221.000	20:30	
76.342	222.000	21: 0	
76.842	222.000	21:30	
77.342	223.000	22: 0	
77.842	222.000	22:30	
78.342	222.000	23: 0	
78.842	222.000	23:30	
79.342	222.000	0: 0	6- 6-82
79.842	223.000	0:30	
80.342	222.000	1: 0	
80.842	222.000	1:30	
81.342	223.000	2: 0	
81.842	222.000	2:30	
82.342	222.000	3: 0	
82.842	222.000	3:30	
83.342	223.000	4: 0	
83.842	223.000	4:30	
84.342	223.000	5: 0	
84.842	223.000	5:30	
85.342	224.000	6: 0	
85.842	224.000	6:30	
86.342	222.000	7: 0	
86.842	224.000	7:30	
87.342	224.000	8: 0	
87.842	222.000	8:30	

6/11/82

SPERRY-SUN INTERNATIONAL INC.
MAGNETIC RECORDING PRESSURE GAUGE REPORT

PAGE 6

SHELL
TROLL
31/2-7

OFFSHORE NORWAY
31ST MAY 1982
MRPG-1254-NOR

WELLHEAD PROBE ON RIG FLOOR - UPSTREAM. (THIRD FLOW TEST)

DELTA TIME	GAUGE PRESSURE	TIME	DATE
88.342	222.000	9: 0	6- 6-82
88.842	227.000	9:30	
89.342	225.000	10: 0	
89.842	223.000	10:30	
90.342	222.000	11: 0	
90.842	225.000	11:30	
91.342	224.000	12: 0	
91.842	224.000	12:30	
92.342	225.000	13: 0	
92.842	225.000	13:30	
93.342	223.000	14: 0	
93.842	224.000	14:30	
94.342	223.000	15: 0	
94.842	224.000	15:30	
95.342	224.000	16: 0	
95.842	223.000	16:30	
96.342	225.000	17: 0	
96.842	225.000	17:30	
97.342	223.000	18: 0	
97.842	222.000	18:30	
98.342	224.000	19: 0	
98.842	225.000	19:30	
99.342	224.000	20: 0	
99.842	225.000	20:30	
100.342	226.000	21: 0	
100.842	226.000	21:30	
101.342	225.000	22: 0	
101.842	226.000	22:30	
102.342	226.000	23: 0	
102.842	225.000	23:30	
103.342	226.000	0: 0	7- 6-82
103.842	226.000	0:30	
104.342	226.000	1: 0	
104.842	226.000	1:30	
105.342	227.000	2: 0	
105.842	227.000	2:30	
106.342	227.000	3: 0	
106.842	226.000	3:30	
107.342	226.000	4: 0	
107.842	226.000	4:30	
108.342	224.000	5: 0	
108.842	227.000	5:30	
109.342	227.000	6: 0	
109.842	224.000	6:30	
110.342	225.000	7: 0	
110.842	226.000	7:30	
111.342	226.000	8: 0	

6/11/82

SPERRY-SUN INTERNATIONAL INC.
MAGNETIC RECORDING PRESSURE GAUGE REPORT

PAGE 7

SHELL
TROLL
31/2-7

OFFSHORE NORWAY
31ST MAY 1982
MRPG-1254-NOR

WELLHEAD PROBE ON RIG FLOOR - UPSTREAM. (THIRD FLOW TEST)

DELTA TIME	GAUGE PRESSURE	TIME	DATE	
111.842	224.000	8:30	7- 6-82	
112.342	225.000	9: 0		
112.842	224.000	9:30		
113.342	224.000	10: 0		
113.842	224.000	10:30		
114.342	226.000	11: 0		END OF FLOW TEST

6/11/82

SPERRY-SUN INTERNATIONAL INC.
MAGNETIC RECORDING PRESSURE GAUGE REPORT

PAGE 1

SHELL
TROLL
31/2-7

OFFSHORE NORWAY
31ST MAY 1982
MRPG-1254-NOR

WELLHEAD PROBE ON RIG FLOOR - UPSTREAM. (FINAL BUILD-UP PERIOD)

DELTA TIME	GAUGE PRESSURE	TIME	DATE
0.000	225.000	11:30	7- 6-82
0.001	226.000	11:30	
0.003	226.000	11:30	
0.004	226.000	11:30	
0.006	224.000	11:30	
0.007	225.000	11:30	
0.008	226.000	11:30	
0.010	226.000	11:30	
0.011	226.000	11:30	
0.012	225.000	11:30	
0.014	226.000	11:30	
0.015	230.000	11:30	
0.017	290.000	11:30	
0.018	310.000	11:31	
0.019	315.000	11:31	
0.021	322.000	11:31	
0.022	327.000	11:31	
0.024	330.000	11:31	
0.025	335.000	11:31	
0.026	341.000	11:31	
0.028	343.000	11:31	
0.029	348.000	11:31	
0.031	352.000	11:31	
0.032	355.000	11:31	
0.033	359.000	11:31	
0.035	364.000	11:32	
0.036	365.000	11:32	
0.037	370.000	11:32	
0.039	374.000	11:32	
0.040	376.000	11:32	
0.042	380.000	11:32	
0.043	384.000	11:32	
0.044	386.000	11:32	
0.046	390.000	11:32	
0.047	394.000	11:32	
0.049	395.000	11:32	
0.050	399.000	11:32	
0.051	403.000	11:33	
0.053	405.000	11:33	
0.054	408.000	11:33	
0.056	412.000	11:33	
0.057	414.000	11:33	
0.058	417.000	11:33	
0.060	421.000	11:33	
0.061	422.000	11:33	
0.062	426.000	11:33	

6/11/82

SPERRY-SUN INTERNATIONAL INC.
MAGNETIC RECORDING PRESSURE GAUGE REPORT

PAGE 2

SHELL
TROLL
31/2-7

OFFSHORE NORWAY
31ST MAY 1982
MRPG-1254-NOR

WELLHEAD PROBE ON RIG FLOOR - UPSTREAM. (FINAL BUILD-UP PERIOD)

DELTA TIME	GAUGE PRESSURE	TIME	DATE
0.064	430.000	11:33	7- 6-82
0.065	431.000	11:33	
0.067	434.000	11:33	
0.068	438.000	11:34	
0.069	439.000	11:34	
0.071	443.000	11:34	
0.072	446.000	11:34	
0.074	448.000	11:34	
0.075	451.000	11:34	
0.076	454.000	11:34	
0.078	456.000	11:34	
0.079	459.000	11:34	
0.081	462.000	11:34	
0.082	464.000	11:34	
0.083	467.000	11:34	
0.085	470.000	11:35	
0.086	471.000	11:35	
0.087	474.000	11:35	
0.089	476.000	11:35	
0.090	479.000	11:35	
0.092	481.000	11:35	
0.093	483.000	11:35	
0.094	486.000	11:35	
0.096	489.000	11:35	
0.097	489.000	11:35	
0.099	492.000	11:35	
0.100	495.000	11:35	
0.101	496.000	11:36	
0.103	499.000	11:36	
0.104	501.000	11:36	
0.106	503.000	11:36	
0.107	505.000	11:36	
0.108	508.000	11:36	
0.110	509.000	11:36	
0.111	511.000	11:36	
0.112	514.000	11:36	
0.114	515.000	11:36	
0.115	517.000	11:36	
0.117	519.000	11:36	
0.118	520.000	11:37	
0.119	523.000	11:37	
0.121	525.000	11:37	
0.122	526.000	11:37	
0.124	529.000	11:37	
0.125	531.000	11:37	
0.126	532.000	11:37	
0.128	534.000	11:37	

6/11/82

SPERRY-SUN INTERNATIONAL INC.
MAGNETIC RECORDING PRESSURE GAUGE REPORT

PAGE 3

SHELL
TROLL
31/2-7

OFFSHORE NORWAY
31ST MAY 1982
MRPG-1254-NOR

WELLHEAD PROBE ON RIG FLOOR - UPSTREAM. (FINAL BUILD-UP PERIOD)

DELTA TIME	GAUGE PRESSURE	TIME	DATE
0.129	536.000	11:37	7- 6-82
0.131	537.000	11:37	
0.132	539.000	11:37	
0.133	541.000	11:37	
0.135	542.000	11:38	
0.136	544.000	11:38	
0.137	546.000	11:38	
0.139	547.000	11:38	
0.140	549.000	11:38	
0.142	550.000	11:38	
0.143	552.000	11:38	
0.144	552.000	11:38	
0.146	555.000	11:38	
0.147	556.000	11:38	
0.149	558.000	11:38	
0.150	559.000	11:38	
0.151	560.000	11:39	
0.153	562.000	11:39	
0.154	563.000	11:39	
0.156	564.000	11:39	
0.157	566.000	11:39	
0.158	567.000	11:39	
0.160	568.000	11:39	
0.161	570.000	11:39	
0.162	571.000	11:39	
0.164	572.000	11:39	
0.165	574.000	11:39	
0.167	575.000	11:39	
0.168	576.000	11:40	
0.169	577.000	11:40	
0.171	578.000	11:40	
0.172	579.000	11:40	
0.174	580.000	11:40	
0.175	582.000	11:40	
0.176	582.000	11:40	
0.178	584.000	11:40	
0.179	584.000	11:40	
0.181	586.000	11:40	
0.182	587.000	11:40	
0.183	588.000	11:40	
0.185	589.000	11:41	
0.186	590.000	11:41	
0.187	591.000	11:41	
0.189	592.000	11:41	
0.190	592.000	11:41	
0.192	594.000	11:41	
0.193	594.000	11:41	

6/11/82

SPERRY-SUN INTERNATIONAL INC.
MAGNETIC RECORDING PRESSURE GAUGE REPORT

PAGE 5

SHELL
TROLL
31/2-7

OFFSHORE NORWAY
31ST MAY 1982
MRPG-1254-NOR

WELLHEAD PROBE ON RIG FLOOR - UPSTREAM. (FINAL BUILD-UP PERIOD)

DELTA TIME	GAUGE PRESSURE	TIME	DATE
0.312	644.000	11:48	7- 6-82
0.321	646.000	11:49	
0.329	648.000	11:49	
0.337	650.000	11:50	
0.346	651.000	11:50	
0.354	653.000	11:51	
0.362	654.000	11:51	
0.371	655.000	11:52	
0.379	657.000	11:52	
0.387	658.000	11:53	
0.396	659.000	11:53	
0.404	660.000	11:54	
0.412	661.000	11:54	
0.421	662.000	11:55	
0.429	663.000	11:55	
0.437	663.000	11:56	
0.446	664.000	11:56	
0.454	665.000	11:57	
0.462	666.000	11:57	
0.471	666.000	11:58	
0.479	667.000	11:58	
0.487	668.000	11:59	
0.496	668.000	11:59	
0.504	669.000	12: 0	
0.512	669.000	12: 0	
0.521	669.000	12: 1	
0.529	670.000	12: 1	
0.537	670.000	12: 2	
0.546	671.000	12: 2	
0.554	671.000	12: 3	
0.562	672.000	12: 3	
0.571	672.000	12: 4	
0.579	672.000	12: 4	
0.587	673.000	12: 5	
0.596	673.000	12: 5	
0.604	673.000	12: 6	
0.612	673.000	12: 6	
0.621	673.000	12: 7	
0.629	674.000	12: 7	
0.637	674.000	12: 8	
0.646	674.000	12: 8	
0.654	675.000	12: 9	
0.662	675.000	12: 9	
0.671	675.000	12:10	
0.679	675.000	12:10	
0.687	675.000	12:11	
0.696	676.000	12:11	

6/11/82

SPERRY-SUN INTERNATIONAL INC.
MAGNETIC RECORDING PRESSURE GAUGE REPORT

PAGE 6

SHELL
TROLL
31/2-7

OFFSHORE NORWAY
31ST MAY 1982
MRPG-1254-NOR

WELLHEAD PROBE ON RIG FLOOR - UPSTREAM. (FINAL BUILD-UP PERIOD)

DELTA TIME	GAUGE PRESSURE	TIME	DATE
0.704	676.000	12:12	7- 6-82
0.712	676.000	12:12	
0.721	676.000	12:13	
0.729	677.000	12:13	
0.737	677.000	12:14	
0.746	677.000	12:14	
0.754	677.000	12:15	
0.762	677.000	12:15	
0.771	677.000	12:16	
0.779	677.000	12:16	
0.787	678.000	12:17	
0.796	678.000	12:17	
0.804	678.000	12:18	
0.812	678.000	12:18	
0.821	678.000	12:19	
0.829	678.000	12:19	
0.837	678.000	12:20	
0.846	678.000	12:20	
0.854	678.000	12:21	
0.862	678.000	12:21	
0.871	678.000	12:22	
0.879	678.000	12:22	
0.887	678.000	12:23	
0.896	678.000	12:23	
0.904	679.000	12:24	
0.912	679.000	12:24	
0.921	679.000	12:25	
0.929	679.000	12:25	
0.937	679.000	12:26	
0.946	679.000	12:26	
0.954	679.000	12:27	
0.962	679.000	12:27	
0.971	679.000	12:28	
0.979	679.000	12:28	
0.987	679.000	12:29	
0.996	679.000	12:29	
1.004	679.000	12:30	
1.012	679.000	12:30	
1.021	679.000	12:31	
1.029	679.000	12:31	
1.037	679.000	12:32	
1.046	680.000	12:32	
1.054	680.000	12:33	
1.062	680.000	12:33	
1.071	680.000	12:34	
1.079	680.000	12:34	
1.087	680.000	12:35	

6/11/82

SPERRY-SUN INTERNATIONAL INC.
MAGNETIC RECORDING PRESSURE GAUGE REPORT

PAGE 7

SHELL
TROLL
31/2-7

OFFSHORE NORWAY
31ST MAY 1982
MRPG-1254-NOR

WELLHEAD PROBE ON RIG FLOOR - UPSTREAM. (FINAL BUILD-UP PERIOD)

DELTA TIME	GAUGE PRESSURE	TIME	DATE
1.096	680.000	12:35	7- 6-82
1.104	680.000	12:36	
1.112	680.000	12:36	
1.121	680.000	12:37	
1.129	680.000	12:37	
1.137	680.000	12:38	
1.146	680.000	12:38	
1.154	680.000	12:39	
1.162	680.000	12:39	
1.171	680.000	12:40	
1.192	681.000	12:41	
1.208	681.000	12:42	
1.225	681.000	12:43	
1.242	681.000	12:44	
1.258	681.000	12:45	
1.275	681.000	12:46	
1.292	681.000	12:47	
1.308	682.000	12:48	
1.325	681.000	12:49	
1.342	681.000	12:50	
1.358	682.000	12:51	
1.375	682.000	12:52	
1.392	682.000	12:53	
1.408	682.000	12:54	
1.425	682.000	12:55	
1.442	683.000	12:56	
1.458	682.000	12:57	
1.475	683.000	12:58	
1.492	683.000	12:59	
1.508	683.000	13: 0	
1.525	683.000	13: 1	
1.542	683.000	13: 2	
1.558	683.000	13: 3	
1.575	683.000	13: 4	
1.592	683.000	13: 5	
1.608	683.000	13: 6	
1.625	683.000	13: 7	
1.642	683.000	13: 8	
1.658	683.000	13: 9	
1.675	684.000	13:10	
1.692	684.000	13:11	
1.708	684.000	13:12	
1.725	684.000	13:13	
1.742	684.000	13:14	
1.758	684.000	13:15	
1.775	684.000	13:16	
1.792	684.000	13:17	

6/11/82

SPERRY-SUN INTERNATIONAL INC.
MAGNETIC RECORDING PRESSURE GAUGE REPORT

PAGE 8

SHELL
TROLL
31/2-7

OFFSHORE NORWAY
31ST MAY 1982
MRPG-1254-NOR

WELLHEAD PROBE ON RIG FLOOR - UPSTREAM. (FINAL BUILD-UP PERIOD)

DELTA TIME	GAUGE PRESSURE	TIME	DATE
1.808	684.000	13:18	7- 6-82
1.825	685.000	13:19	
1.842	685.000	13:20	
1.858	685.000	13:21	
1.875	685.000	13:22	
1.892	685.000	13:23	
1.908	685.000	13:24	
1.997	686.000	13:29	
2.081	681.000	13:34	
2.164	681.000	13:39	
2.247	681.000	13:44	
2.331	682.000	13:49	
2.414	684.000	13:54	
2.918	688.000	14:25	
3.418	691.000	14:55	
3.918	695.000	15:25	
4.418	700.000	15:55	
5.418	680.000	16:55	
5.918	685.000	17:25	

END OF BUILD-UP