

FLOPET

Denne rapport
tilhører



UND DOK.SENTER

L.NR. 92083054

KODE well 30/2-1 nr 2

Returneres etter bruk

HIGH ACCURACY PRESSURE TEMPERATURE MEASUREMENTS

Company: STATOIL

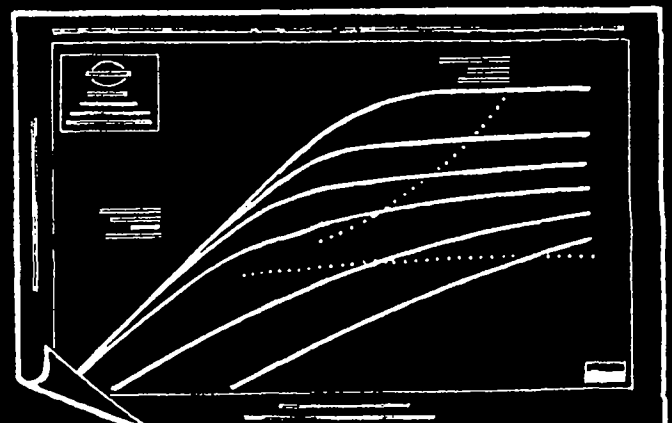
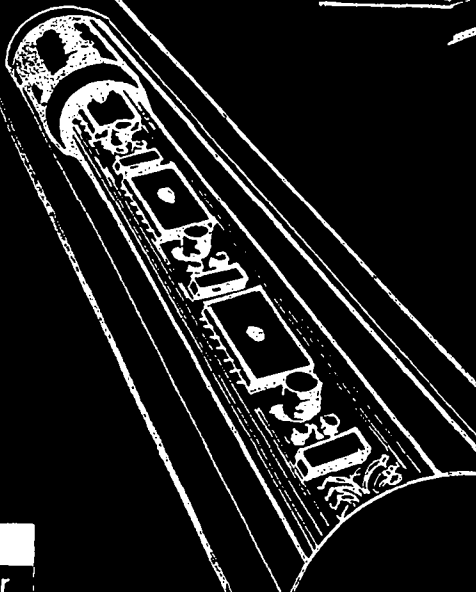
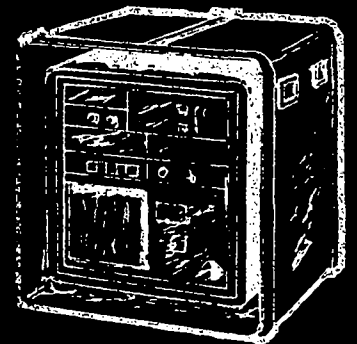
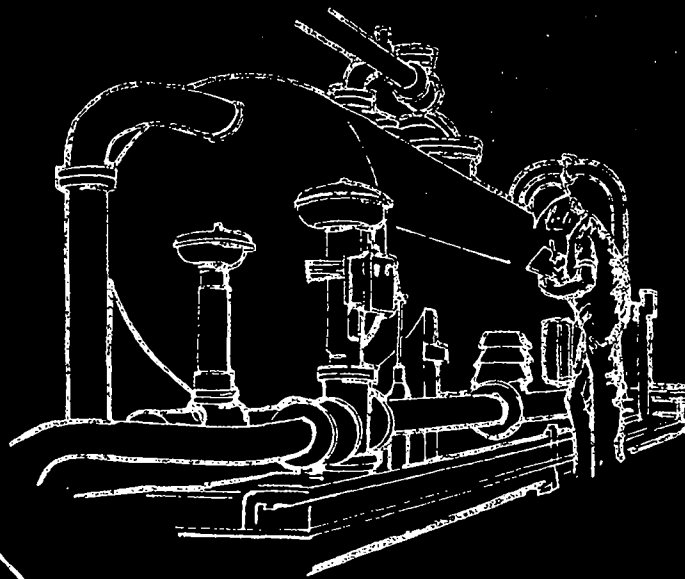
Country: NORWAY

Field: WILDCAT

Well: 30/2-1

Location: ETIVE

Date: 28.09.82-03.10



FLOPETROL

DISTRICT: NSD

BASE : NWB

REPORT N°: ELS 82/54

HIGH ACCURACY PRESSURE TEMPERATURE MEASUREMENTS

Company: STATOIL

Country: NORWAY

Field: WILDCAT

Well: 30/2-1

Zone: ETIVE

Date: 28.09.82-03.10.82

GAUGE : SDR 81065/CRG 81708
DST No. 2

FLOPETROL

Country : NORWAY

Section INDEX

Field : WILDCAT

Base NWB

Well : 30/2-1

Report No: ELS82/54

INDEX

- 1 - MEASUREMENT PLOTS
- 2 - MEASUREMENT DATA
- 3 - SEQUENCE OF EVENTS
- 4 - WELL COMPLETION DATA
- 5 - LISTING OF ALL DATA RECORDED
- 6 -
- 7 -

NOTE: TEMPERATURE CHANNEL IN GAUGE FAILED DURING SURVEY. TEMPERATURE DATA FROM SPERRY SUN USED IN PRESSURE CALCULATIONS. ABNORMAL PEAKS HAVE BEEN TAKEN OUT, THUS SOME DATA ARE MISSING.

Flopetrol operator:

X. HERVE / A. ENGEBAKKEN

Company representative:

S. LØINING

FLOPPETROL HIGH ACCURACY PRESSURE MEASUREMENT [LINEAR PLOT]

DST No 2

700

685

670

655

640

625

610

605

PRESSURE P.S.F.



CLIENT : STAFFORD
FIELD : WILD CAT
WELL : 30/2-1
ZONE : RTIVE
PERF. INT. : 3761-3771 MKB
GAUGE : SDR 81065/CRG 81708
DEPTH : 3752.85 MKB

TIME (HOURS)

0 1 2 3 4 5 6 7 8

HIGH ACCURACY PRESSURE MEASUREMENT
 FLOPETROL
 CLINEAR PLOT

FIRST FLOW ON 32/64' CHOKE

CLIENT: STATOIL
 FIELD: WILDGAP
 WELL: 30/2-1
 ZONE: FITIVE
 PERM. INT.: 3761-3771HRKB

GAUGE: SDR 81065/ORG 81708
 DEPTH: 3752.85MRKB

PRESSURE P.S.I.

700

685

670

655

640

625

610

600

TIME (HOURS)

6

7

8

9

10

11

12

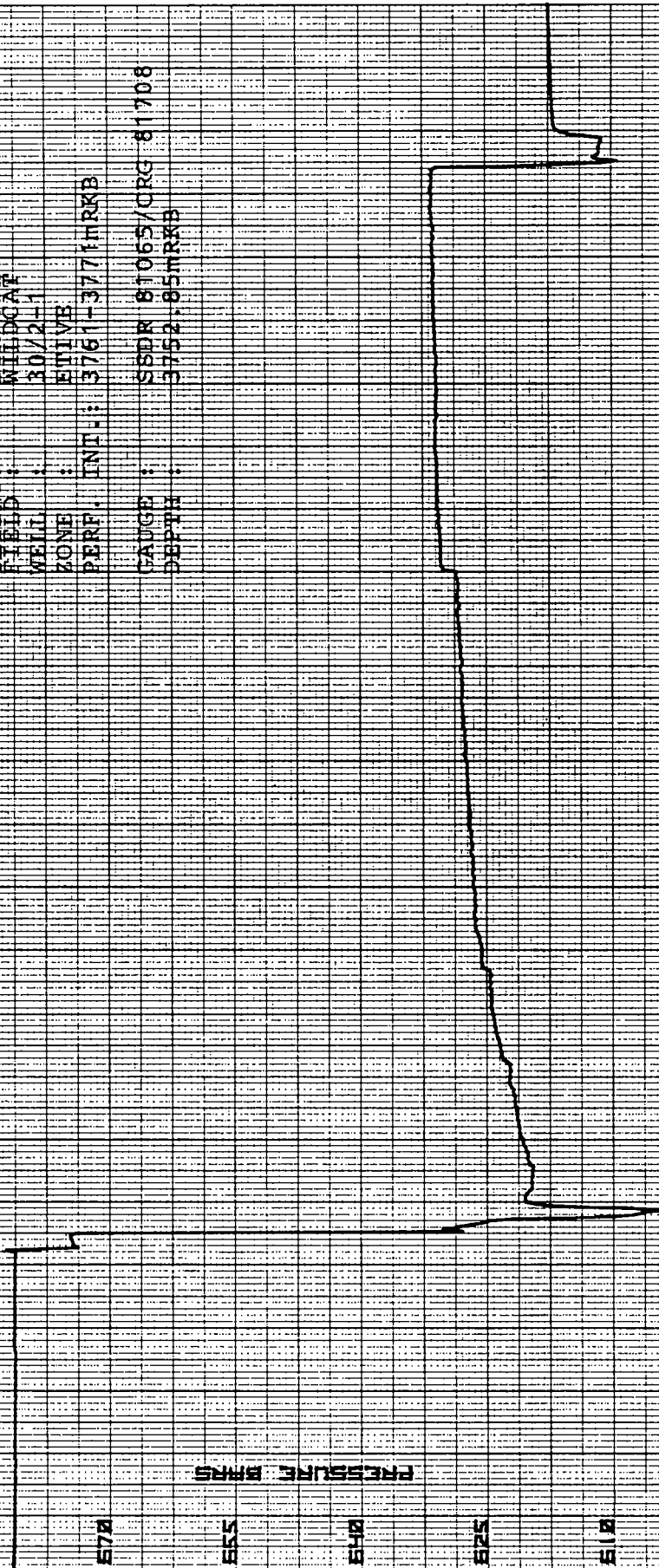
13

14

15

16

17



700 HIGH ACCURACY FLORETROL FLORETROL
 710 HIGH ACCURACY PRESSURE MEASUREMENT
 720 IN-LINE PLOTTING

730 SECOND FLOW ON 48/64" CHOKES

740 CLIENT: STATION
 750 FIELD: WILDCAT
 760 WELL: 30/2-1
 770 ZONE: BEIVE
 780 PERM. INT.: 3761-3771 MKB
 790 GAUGE: 85DR 81065/CRG81700
 800 DEPTH: 3752-85 MKB

810 PRESSURE (MKB)

820 TIME (HOURS)

830 15

17

18

19

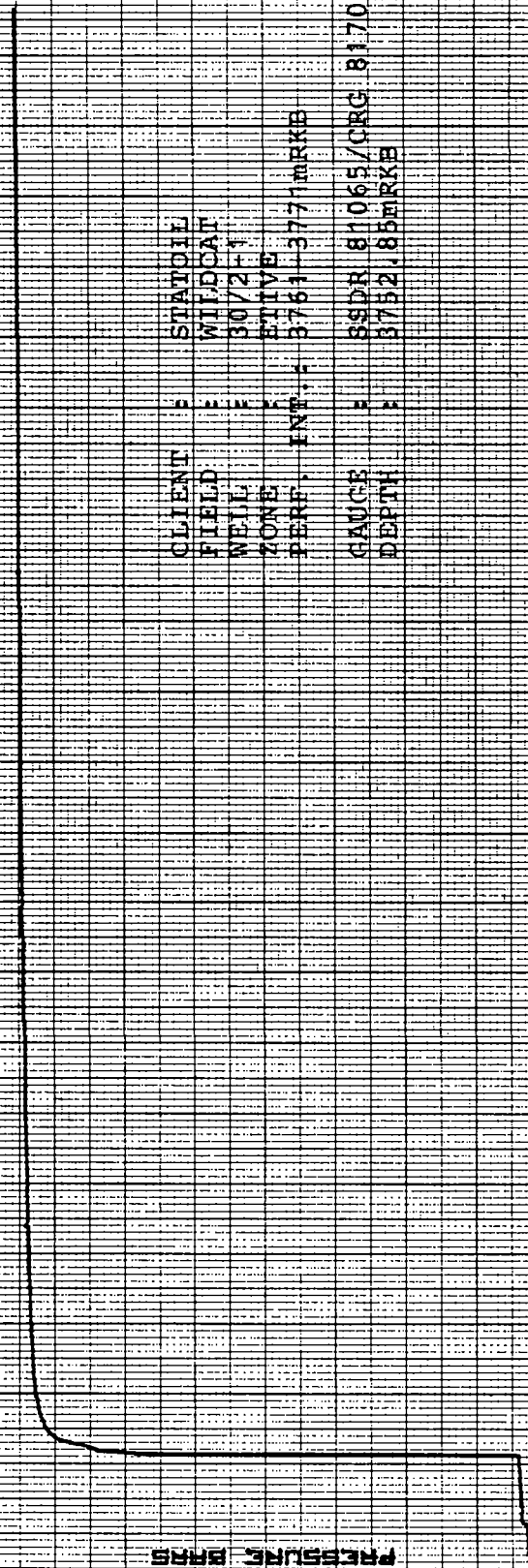
20

21

22

FLOPETROL
HIGH ACCURACY PRESSURE MEASUREMENT
LINEAR PLOT

BUILD UP PERIOD



CLIENT : STATOIL
FIELD : WILD CAT
WELL : 30/2-1
ZONE : RTIVE
PERF. INT. : 3761-3771 MRKB
GAUGE : 81065/CRC 81708
DEPTH : 3752.85 MRKB

TIME (HOURS)

700
800
900
1000
1100
1200
1300

0 0.2 0.4 0.6 0.8 1.0 1.2 1.4 1.6 1.8 2.0

FLUORETHRONE REFERENCE
HIGH RESOLUTION

LOG DELTA P [BARS]

-2

-1

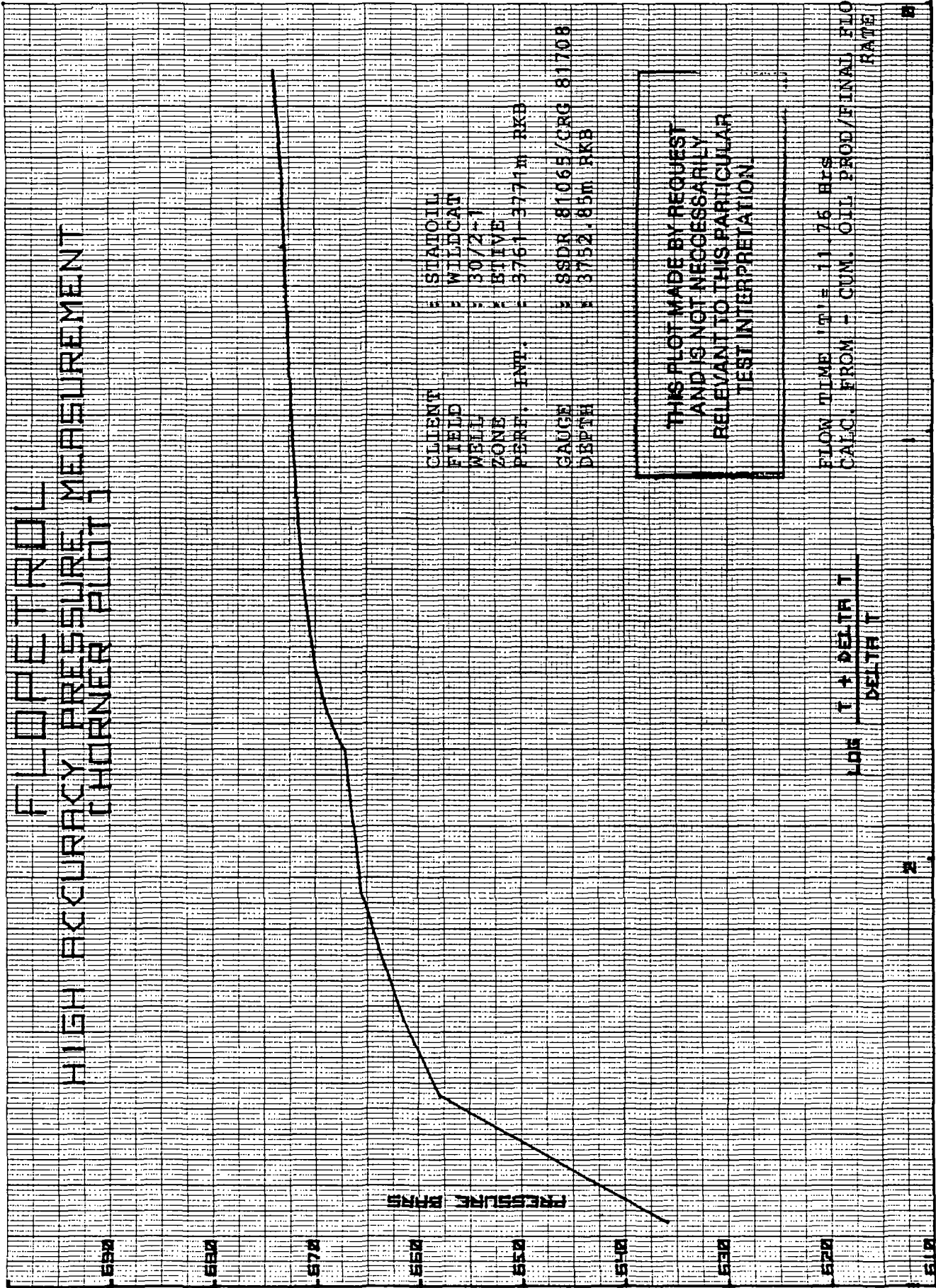
0

LOG DELTA T [HOURS]

CLIENT	STATOIL
FIELD	WILDCAT
WELL	30/2-1
ZONE	FIVE
PERF.	3761-3771mRKB
GAUGE	SSDR-84065/GRG-81708
DEPTH	3752.85mRKB
SHUT IN TIME	: 21:31 HRS.
FINAL FLOWING PRESSURE	: 620.521 BARA

2

FLUORETROL
HIGH ACCURACY PRESSURE MEASUREMENT
CHORNER PLOT



CLIENT : STATOIL
 FIELD : WILDCAT
 WELL : 30/2-1
 ZONE : ESTIVE
 PERM. INP. : 3761 3774M RKB
 GAUGE : SDR 81065 / CRG 81708
 DEPTH : 3752.85M RKB

THIS PLOT MADE BY REQUEST
 AND IS NOT NECESSARILY
 RELEVANT TO THIS PARTICULAR
 TEST INTERPRETATION.

FLOW TIME T₁ = 11.76 HRS
 CALC. FROM - CUM. OIL PROD / FINAL FLOW RATE

LOG T + DELTA T
 DELTA T

FLUORETROL
HIGH ACCURACY PRESSURE MEASUREMENT
CHORNER PLOTS

THIS PLOT MADE BY REQUEST
AND IS NOT NECESSARILY
RELEVANT TO THIS PARTICULAR
TEST INTERPRETATION.

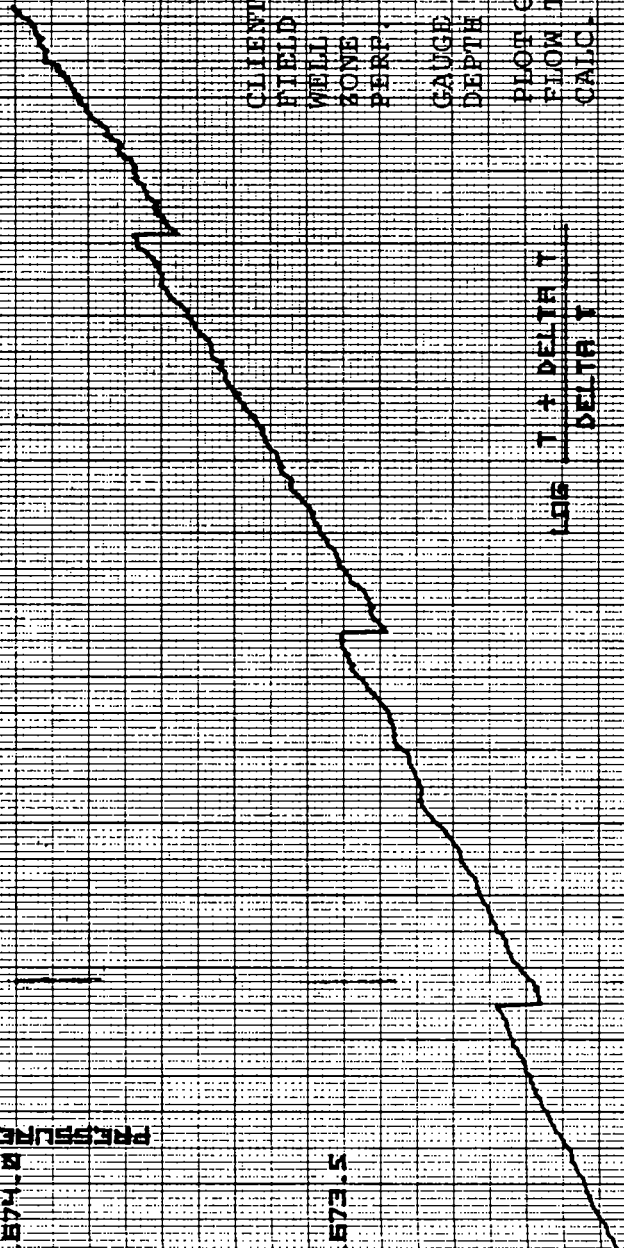
PRESSURE (PSI)

874.5

874.0

873.5

873.0



CLIENT : STATOIL
FIELD : WILDCAT
WELL : 3072-1
ZONE : FTIVS
PERF. ENH. : 376-3771H-RKB

GAUGE : SDR 81065/CRG 81708
DEPTH : 3752.85M RKB

PLOT OF FINAL HALF CYCLE,
FLOW TIME (H) = 11.76 HRS.
CALC. FROM - CUM. OIL PROD/FINAL FLOW
RATE

LOG T + DELTA T
DELTA T



FLOPETROL
PRESSURE & TEMPERATURE CALCULATIONS

SECTION 2
PAGE 1

TIME HR. MN. SS	PRESS. BARS	TEMP. DEG.C	DEL.T (HOURS)	LOG DEL.T	DEL.P BARS	LOG DEL.P	REMARKS
21. 0. 0	712.878						
21. 5. 0	717.703						
21.10. 0	715.197	134.1					
21.15. 0	715.279						
21.20. 0	715.570	134.1					
21.25. 0	714.238						
21.30. 0	712.445	134.1					
21.35. 0	710.811						
21.40. 0	709.433	134.1					
21.45. 0	708.223						
21.50. 0	706.857	134.1					
21.55. 0	705.758						
22. 0. 0	704.453	134.1					
22. 5. 0	703.445						
22.10. 0	702.423	134.1					
22.15. 0	701.292						
22.20. 0	699.915	134.1					
22.25. 0	698.944						
22.30. 0	698.049	134.1					
22.35. 0	697.201						
22.40. 0	696.398	134.1					
22.45. 0	695.636						
22.50. 0	694.910	134.1					
22.55. 0	694.221						
23. 0. 0	693.565	134.1					
23. 5. 0	692.940						
23.10. 0	692.345	134.1					
23.15. 0	691.780						
23.20. 0	691.238	134.1					
23.25. 0	690.723						
23.30. 0	690.230	134.1					
23.35. 0	689.759						
23.40. 0	689.313	134.1					
23.45. 0	688.886						
23.50. 0	688.480	134.1					
23.55. 0	688.096						
24. 0. 0	687.732	134.1					
24. 0. 0	687.732						
0. 5. 0	687.390						
0.10. 0	687.071	134.1					
0.15. 0	686.771						
0.20. 0	686.503	134.1					

29.09.82
GAUGE : SSSDR/CRG 81708
DEPTH : 3752.85m RKB

47

48

49

50

30.09.82

FLOPETROL
Schlumberger

FLOPETROL
PRESSURE & TEMPERATURE CALCULATIONS

SECTION 2
PAGE 2

TIME HR. MN. SS	PRESS. BARS	TEMP. DEG. C	DEL. T (HOURS)	LOG DEL. T	DEL. P BARS	LOG DEL. P	REMARKS
0.25. 0	686.245	134.1					
0.30. 0	686.011	134.1					
0.35. 0	685.792	134.1					
0.40. 0	685.579	134.1					
0.45. 0	685.373	134.1					
0.50. 0	685.179	134.1					
0.55. 0	685.008	134.1					
1. 0. 0	684.867	134.1					
1. 5. 0	684.719	134.1					
1.10. 0	684.570	134.1					
1.15. 0	684.427	134.1					
1.20. 0	684.288	134.1					
1.25. 0	684.157	134.1					
1.30. 0	684.029	134.1					
1.35. 0	683.907	134.1					
1.40. 0	683.791	134.1					
1.45. 0	683.680	134.1					
1.50. 0	683.575	134.1					
1.55. 0	683.471	134.1					
2. 0. 0	683.374	134.1					
2. 5. 0	683.280	134.1					
2.10. 0	683.189	134.1					
2.15. 0	683.104	134.1					
2.20. 0	683.025	134.1					
2.25. 0	682.945	134.1					
2.30. 0	682.870	134.1					
2.35. 0	682.796	134.1					
2.40. 0	682.725	134.1					
2.45. 0	682.657	134.1					
2.50. 0	682.594	134.1					
2.55. 0	682.534	134.1					
3. 0. 0	682.474	134.1					
3. 5. 0	682.417	134.1					
3.10. 0	682.362	134.1					
3.15. 0	682.310	134.1					
3.20. 0	682.257	134.1					
3.25. 0	682.207	134.1					
3.30. 0	682.159	134.1					
3.35. 0	682.113	134.1					
3.40. 0	682.067	134.1					
3.45. 0	682.023	134.1					
3.50. 0	681.982	134.1					

51

52

53

54

55

FLOPETROL
PRESSURE & TEMPERATURE CALCULATIONS

REMARKS

LOG DEL.T
DEL.P
BARS

DEL.T
(HOURS)

TEMP.
DEG.C

PRESS.
BARS

TIME
HR.MN.SS

3.55.0	681.940	134.1			
4.0.0	681.902	134.1			
4.5.0	681.863	134.1			
4.10.0	681.826	134.1			
4.15.0	681.793	134.1			
4.20.0	681.759	134.1			
4.25.0	681.728	134.1			
4.30.0	681.696	134.1			
4.35.0	681.665	134.1			
4.40.0	681.635	134.1			
4.45.0	681.606	134.1			
4.50.0	681.577	134.1			
4.55.0	681.550	134.1			
5.0.0	681.524	134.1			
5.5.0	681.499	134.1			
5.10.0	681.474	134.1			
5.15.0	681.451	134.1			
5.20.0	681.429	134.1			
5.25.0	681.410	134.1			
5.30.0	681.390	134.1			
5.35.0	681.372	134.1			
5.40.0	681.352	134.1			
5.45.0	681.334	134.1			
5.50.0	681.318	134.1			
5.55.0	681.299	13.4			
6.0.0	681.349	134.6			
6.5.0	681.332	134.6			
6.10.0	681.315	134.6			
6.15.0	681.301	134.6			
6.20.0	681.286	134.6			
6.25.0	681.271	134.6			
6.30.0	681.258	134.6			
6.35.0	681.243	134.6			
6.40.0	681.230	134.6			
6.45.0	681.218	134.6			
6.50.0	681.347	134.6			
6.55.0	681.352	134.6			
7.0.0	681.327	134.6			
7.5.0	681.308	134.6			
7.10.0	681.313	134.6			
7.15.0	681.306	134.6			
7.20.0	681.293	134.6			

56

57

58

59

60

FLOPETROL
PRESSURE & TEMPERATURE CALCULATIONS

TIME HR. MIN. SS	PRESS. BARS	TEMP. DEG. C	DEL. T (HOURS)	LOG DEL. T	DEL. P BARS	LOG DEL. P	REMARKS
7.25. 0	681.275			0.0000			
7.30. 0	681.258	134.6		0.0167	46.228	1.6649	WELL OPENED ON 8 / 64 ADJ: 7.45. 0 CHOKE
7.31. 0	681.253			0.0333	44.046	1.6439	
7.32. 0	681.250			0.0500	45.759	1.6605	SHUT IN PRES. 674.048
7.33. 0	681.247			0.0667	47.150	1.6735	
7.34. 0	681.243			0.0833	48.645	1.6870	
7.35. 0	681.238			0.1000	49.287	1.6927	
7.36. 0	681.263	134.6		0.1167	52.397	1.7193	
7.37. 0	682.224			0.1333	64.435	1.8091	
7.38. 0	673.822			0.1500	66.772	1.8246	
7.39. 0	674.142			0.1667	67.734	1.8308	
7.40. 0	674.280			0.1833	69.804	1.8439	
7.41. 0	674.393			0.2000	66.589	1.8234	CHANGE CHOKE TO 32 / 64 ADJ.
7.42. 0	674.491			0.2167	58.312	1.7658	
7.43. 0	674.567			0.2333	55.018	1.7405	
7.44. 0	674.633			0.2500	53.994	1.7323	
7.45. 0	674.048			0.2667	53.747	1.7304	
7.46. 0	627.820			0.2833	53.755	1.7304	
7.47. 0	630.002	134.6		0.3000	53.824	1.7310	
7.48. 0	628.269			0.3167	54.026	1.7326	
7.49. 0	626.898			0.3333	54.256	1.7344	
7.50. 0	625.403			0.3500	54.511	1.7365	
7.51. 0	624.761			0.3667	54.627	1.7374	
7.52. 0	621.651			0.3833	54.603	1.7372	
7.53. 0	609.613			0.4000	54.606	1.7372	
7.54. 0	607.276			0.4167	54.588	1.7371	
7.55. 0	606.314			-1.7782			
7.56. 0	604.244			-1.4771			
7.57. 0	607.459	134.6		-1.3010			
7.58. 0	615.736			-1.1761			
7.59. 0	619.030			-1.0792			
8. 0. 0	620.054			-1.0000			
8. 1. 0	620.301			-0.9331			
8. 2. 0	620.293			-0.8751			
8. 3. 0	620.224			-0.8239			
8. 4. 0	620.022			-0.7782			
8. 5. 0	619.792			-0.7368			
8. 6. 0	619.537			-0.6990			
8. 7. 0	619.421	134.6		-0.6642			
8. 8. 0	619.445			-0.6320			
8. 9. 0	619.442			-0.6021			
8.10. 0	619.460			-0.5740			
				-0.5477			
				-0.5229			
				-0.4994			
				-0.4771			
				-0.4559			
				-0.4357			
				-0.4164			
				-0.3979			
				-0.3802			

FLOPETROL
PRESSURE & TEMPERATURE CALCULATIONS

SECTION 2
PAGE 5

REMARKS

LOG DEL.P

DEL.P
BARS

LOG DEL.T

DEL.T
(HOURS)

TEMP.
DEG.C

PRESS.
BARS

TIME
HR.MN.SS

8.11.0	619.440	0.4333	-0.3632	54.608	1.7373
8.12.0	619.346	0.4500	-0.3468	54.702	1.7380
8.13.0	619.360	0.4667	-0.3310	54.688	1.7379
8.14.0	619.376	0.4833	-0.3158	54.672	1.7378
8.15.0	619.314	0.5000	-0.3010	54.734	1.7363
8.16.0	619.253	0.5167	-0.2868	54.795	1.7387
8.17.0	619.271	0.5333	-0.2730	54.777	1.7386
8.18.0	619.755	0.5500	-0.2596	54.293	1.7347
8.19.0	619.827	0.5667	-0.2467	54.221	1.7342
8.20.0	619.953	0.5833	-0.2341	54.095	1.7332
8.21.0	619.935	0.6000	-0.2218	54.113	1.7333
8.22.0	619.921	0.6167	-0.2099	54.127	1.7334
8.23.0	619.966	0.6333	-0.1984	54.082	1.7331
8.24.0	620.050	0.6500	-0.1871	53.998	1.7324
8.25.0	620.161	0.6667	-0.1761	53.887	1.7315
8.26.0	620.310	0.6833	-0.1654	53.738	1.7303
8.27.0	620.381	0.7000	-0.1549	53.667	1.7297
8.28.0	620.531	0.7167	-0.1447	53.517	1.7285
8.29.0	620.557	0.7333	-0.1347	53.491	1.7283
8.30.0	620.621	0.7500	-0.1249	53.427	1.7278
8.31.0	620.733	0.7667	-0.1154	53.315	1.7268
8.32.0	620.836	0.7833	-0.1061	53.212	1.7260
8.33.0	620.884	0.8000	-0.0969	53.164	1.7256
8.34.0	620.894	0.8167	-0.0880	53.154	1.7255
8.35.0	620.945	0.8333	-0.0792	53.103	1.7251
8.36.0	620.993	0.8500	-0.0706	53.055	1.7247
8.37.0	621.050	0.8667	-0.0621	52.998	1.7243
8.38.0	621.067	0.8833	-0.0539	52.981	1.7241
8.39.0	621.091	0.9000	-0.0458	52.957	1.7239
8.40.0	621.170	0.9167	-0.0378	52.878	1.7233
8.41.0	621.188	0.9333	-0.0300	52.860	1.7231
8.42.0	621.252	0.9500	-0.0223	52.796	1.7226
8.43.0	621.300	0.9667	-0.0147	52.748	1.7222
8.44.0	621.318	0.9833	-0.0073	52.730	1.7221
8.45.0	621.284	1.0000	0.0000	52.764	1.7223
8.46.0	621.461	1.0167	0.0072	52.587	1.7209
8.47.0	621.458	1.0333	0.0142	52.590	1.7209
8.48.0	621.466	1.0500	0.0212	52.582	1.7208
8.49.0	621.443	1.0667	0.0280	52.605	1.7210
8.50.0	621.440	1.0833	0.0348	52.608	1.7211
8.51.0	621.564	1.1000	0.0414	52.484	1.7200
8.52.0	621.651	1.1167	0.0479	52.397	1.7193

FLOPETROL
PRESSURE & TEMPERATURE CALCULATIONS

REMARKS

LOG DEL.P

DEL.P
BARS

LOG DEL.T

DEL.T
(HOURS)

TEMP.
DEG.C

PRESS.
BARS

TIME
HR. MIN. SS

TIME HR. MIN. SS	PRESS. BARS	TEMP. DEG.C	DEL.T (HOURS)	LOG DEL.T	DEL.P BARS	LOG DEL.P	REMARKS
8.53. 0	621.628		1.1333	0.0544	52.420	1.7195	
8.54. 0	621.673		1.1500	0.0607	52.375	1.7191	
8.55. 0	621.873		1.1667	0.0669	52.175	1.7175	
8.56. 0	622.081		1.1833	0.0731	51.967	1.7157	
8.57. 0	622.147	140.1	1.2000	0.0792	51.901	1.7152	
8.58. 0	622.103		1.2167	0.0852	51.945	1.7155	
8.59. 0	622.101		1.2333	0.0911	51.947	1.7156	
9. 0. 0	622.098		1.2500	0.0969	51.950	1.7156	
9. 1. 0	622.088		1.2667	0.1027	51.960	1.7157	
9. 2. 0	622.047		1.2833	0.1083	52.001	1.7160	
9. 3. 0	622.052		1.3000	0.1139	51.996	1.7160	
9. 4. 0	622.081		1.3167	0.1195	51.967	1.7157	
9. 5. 0	622.061		1.3333	0.1249	51.967	1.7157	
9. 6. 0	622.104		1.3500	0.1303	51.944	1.7155	
9. 7. 0	622.325	140.6	1.3667	0.1357	51.723	1.7137	
9. 8. 0	622.899		1.3833	0.1409	51.149	1.7088	
9. 9. 0	622.941		1.4000	0.1461	51.107	1.7085	
9.10. 0	623.015		1.4167	0.1513	51.033	1.7079	
9.11. 0	623.061		1.4333	0.1563	50.987	1.7075	
9.12. 0	623.117		1.4500	0.1614	50.931	1.7070	
9.13. 0	623.214		1.4667	0.1663	50.834	1.7062	
9.14. 0	623.260		1.4833	0.1712	50.788	1.7058	
9.15. 0	623.298		1.5000	0.1761	50.750	1.7054	
9.16. 0	623.389		1.5167	0.1809	50.659	1.7047	
9.17. 0	623.369	140.6	1.5333	0.1856	50.659	1.7047	
9.18. 0	623.478		1.5500	0.1903	50.570	1.7039	
9.19. 0	623.569		1.5667	0.1950	50.479	1.7031	
9.20. 0	623.643		1.5833	0.1996	50.405	1.7025	
9.21. 0	623.704		1.6000	0.2041	50.344	1.7019	
9.22. 0	623.709		1.6167	0.2086	50.339	1.7019	
9.23. 0	623.770		1.6333	0.2131	50.278	1.7014	
9.24. 0	623.852		1.6500	0.2175	50.196	1.7007	
9.25. 0	623.871		1.6667	0.2218	50.177	1.7005	
9.26. 0	623.873		1.6833	0.2262	50.175	1.7005	
9.27. 0	623.913		1.7000	0.2304	50.135	1.7001	
9.28. 0	623.995	140.6	1.7167	0.2347	50.053	1.6994	
9.29. 0	624.071		1.7333	0.2389	49.977	1.6988	
9.30. 0	624.056		1.7500	0.2430	49.992	1.6989	
9.31. 0	624.073		1.7667	0.2472	49.975	1.6988	
9.32. 0	624.206		1.7833	0.2512	49.842	1.6976	
9.33. 0	624.328		1.8000	0.2553	49.720	1.6965	
9.34. 0	624.242		1.8167	0.2593	49.806	1.6973	

FLOPETROL
PRESSURE & TEMPERATURE CALCULATIONS

TIME HR. MIN. SS	PRESS. BARS	TEMP. DEG. C	DEL. T (HOURS)	LOG DEL. T	DEL. P BARS	LOG DEL. P	REMARKS
9.35. 0	624.260		1.8333	0.2632	49.788	1.6971	
9.40. 0	624.271	141.1	1.9167	0.2825	49.777	1.6970	
9.45. 0	624.384		2.0000	0.3010	49.664	1.6960	
9.50. 0	624.422	141.1	2.0833	0.3188	49.626	1.6957	
9.55. 0	625.412		2.1667	0.3358	48.636	1.6870	
10. 0. 0	625.361	141.1	2.2500	0.3522	48.687	1.6874	
10. 5. 0	625.621		2.3333	0.3680	48.427	1.6851	
10.10. 0	626.050	141.1	2.4167	0.3832	47.998	1.6812	
10.15. 0	626.113		2.5000	0.3979	47.935	1.6807	
10.20. 0	626.091	141.6	2.5833	0.4122	47.957	1.6809	
10.25. 0	626.188		2.6667	0.4260	47.860	1.6800	
10.30. 0	626.362	141.6	2.7500	0.4393	47.686	1.6784	
10.35. 0	626.328		2.8333	0.4523	47.720	1.6787	
10.40. 0	626.400	141.6	2.9167	0.4649	47.648	1.6780	
10.45. 0	626.461		3.0000	0.4771	47.587	1.6775	
10.50. 0	626.526	141.6	3.0833	0.4890	47.522	1.6769	
10.55. 0	626.627		3.1667	0.5006	47.421	1.6760	
11. 0. 0	626.816	141.6	3.2500	0.5119	47.232	1.6742	
11. 5. 0	626.706		3.3333	0.5229	47.342	1.6752	
11.10. 0	626.841	141.6	3.4167	0.5336	47.207	1.6740	
11.15. 0	626.981		3.5000	0.5441	47.067	1.6727	
11.20. 0	627.004	141.6	3.5833	0.5543	47.044	1.6725	
11.25. 0	627.030		3.6667	0.5643	47.018	1.6723	
11.30. 0	627.119	141.6	3.7500	0.5740	46.929	1.6714	
11.35. 0	627.257		3.8333	0.5836	46.791	1.6702	
11.40. 0	627.341	142.1	3.9167	0.5929	46.707	1.6694	
11.45. 0	627.344		4.0000	0.6021	46.704	1.6694	
11.50. 0	627.466	142.1	4.0833	0.6110	46.582	1.6682	
11.55. 0	627.601		4.1667	0.6198	46.447	1.6670	
12. 0. 0	627.706	142.1	4.2500	0.6284	46.342	1.6660	
12. 5. 0	627.652		4.3333	0.6368	46.396	1.6665	
12.10. 0	627.660	142.1	4.4167	0.6451	46.388	1.6664	
12.15. 0	627.833		4.5000	0.6532	46.215	1.6648	
12.20. 0	627.899	142.1	4.5833	0.6612	46.149	1.6642	
12.25. 0	627.927		4.6667	0.6690	46.121	1.6639	
12.30. 0	628.025	142.1	4.7500	0.6767	46.023	1.6630	
12.35. 0	628.067		4.8333	0.6842	45.981	1.6626	
12.40. 0	628.183	142.1	4.9167	0.6917	45.865	1.6615	
12.45. 0	628.107		5.0000	0.6990	45.941	1.6622	
12.50. 0	628.156	142.1	5.0833	0.7061	45.892	1.6617	
12.55. 0	628.154		5.1667	0.7132	45.894	1.6618	
13. 0. 0	628.260	142.1	5.2500	0.7202	45.788	1.6608	

64

65

66

67

FLOPETROL
PRESSURE & TEMPERATURE CALCULATIONS

REMARKS

LOG DEL.P

DEL.P
BARS

LOG DEL.T

DEL.T
(HOURS)

TEMP.
DEG.C

PRESS.
BARS

TIME
HR.MM.SS

68

69

70

71

13. 5. 0	630.185		5.3333	0.7270	43.863	1.6421
13.10. 0	630.185	142.1	5.4167	0.7337	43.863	1.6421
13.15. 0	630.219		5.5000	0.7404	43.829	1.6418
13.20. 0	630.345	142.1	5.5633	0.7469	43.703	1.6405
13.25. 0	630.390		5.6667	0.7533	43.658	1.6401
13.30. 0	630.525	142.1	5.7500	0.7597	43.523	1.6387
13.35. 0	630.516		5.8333	0.7659	43.532	1.6388
13.40. 0	630.532	142.1	5.9167	0.7721	43.516	1.6386
13.45. 0	630.579		6.0000	0.7782	43.469	1.6382
13.50. 0	630.569	142.6	6.0833	0.7841	43.459	1.6361
13.55. 0	630.695		6.1667	0.7901	43.353	1.6370
14. 0. 0	630.779	142.6	6.2500	0.7959	43.269	1.6362
14. 5. 0	630.780		6.3333	0.8016	43.268	1.6362
14.10. 0	630.751	142.6	6.4167	0.8073	43.297	1.6365
14.15. 0	630.594		6.5000	0.8129	43.454	1.6380
14.20. 0	630.690	142.6	6.5633	0.8184	43.358	1.6371
14.25. 0	630.623		6.6667	0.8239	43.425	1.6377
14.30. 0	630.642	142.6	6.7500	0.8293	43.406	1.6375
14.35. 0	630.703		6.8333	0.8346	43.345	1.6369
14.40. 0	630.623	142.6	6.9167	0.8399	43.425	1.6377
14.45. 0	630.772		7.0000	0.8451	43.276	1.6362
14.50. 0	630.764	142.6	7.0833	0.8502	43.284	1.6363
14.55. 0	630.841		7.1667	0.8553	43.207	1.6356
15. 0. 0	630.838	142.6	7.2500	0.8603	43.210	1.6356
15. 5. 0	630.938		7.3333	0.8653	43.110	1.6346
15.10. 0	630.954	142.6	7.4167	0.8702	43.094	1.6344
15.15. 0	630.989		7.5000	0.8751	43.059	1.6341
15.20. 0	631.006	142.6	7.5833	0.8799	43.042	1.6339
15.25. 0	630.971		7.6667	0.8846	43.077	1.6342
15.30. 0	631.009	142.6	7.7500	0.8893	43.039	1.6339
15.35. 0	631.107		7.8333	0.8939	42.941	1.6329
15.40. 0	631.063	142.6	7.9167	0.8985	42.965	1.6333
15.45. 0	631.091		8.0000	0.9031	42.957	1.6330
15.50. 0	631.154	142.6	8.0833	0.9076	42.894	1.6324
15.55. 0	631.210		8.1667	0.9120	42.838	1.6318
16. 0. 0	631.230	142.6	8.2500	0.9165	42.818	1.6316
16. 1. 0	631.251		8.2667	0.9173	42.797	1.6314
16. 2. 0	631.227	142.6	8.2833	0.9182	42.821	1.6317
16. 3. 0	631.223		8.3000	0.9191	42.825	1.6317
16. 4. 0	631.158	142.6	8.3167	0.9199	42.890	1.6324
16. 5. 0	631.136		8.3333	0.9208	42.912	1.6326
16. 6. 0	631.154	142.6	8.3500	0.9217	42.894	1.6324

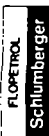
FLOPETROL
PRESSURE & TEMPERATURE CALCULATIONS

TIME HR. MIN. SS	PRESS. BARS	TEMP. DEG. C	DEL. T (HOURS)	LOG DEL. T	DEL. P BARS	LOG DEL. P	REMARKS
16. 7. 0	631.128	142.6	8.3667	0.9226	42.920	1.6327	
16. 8. 0	631.179		8.3833	0.9234	42.869	1.6321	
16. 9. 0	631.173		8.4000	0.9243	42.875	1.6322	
16.10. 0	631.125		8.4167	0.9251	42.923	1.6327	
16.11. 0	631.182		8.4333	0.9260	42.866	1.6321	
16.12. 0	630.687		8.4500	0.9269	43.361	1.6371	
16.13. 0	617.110		8.4667	0.9277	56.938	1.7554	
16.14. 0	611.236		8.4833	0.9286	62.812	1.7980	
16.15. 0	609.209		8.5000	0.9294	64.839	1.8118	
16.16. 0	611.582		8.5167	0.9303	62.466	1.7956	
16.17. 0	611.913	142.6	8.5333	0.9311	62.135	1.7933	
16.18. 0	611.446		8.5500	0.9320	62.602	1.7966	
16.19. 0	611.246		8.5667	0.9328	62.802	1.7980	
16.20. 0	611.189		8.5833	0.9337	62.859	1.7984	
16.21. 0	611.264		8.6000	0.9345	62.784	1.7978	
16.22. 0	611.192		8.6167	0.9353	62.856	1.7983	
16.23. 0	611.111		8.6333	0.9362	62.937	1.7989	
16.24. 0	611.049		8.6500	0.9370	62.999	1.7993	
16.25. 0	610.995		8.6667	0.9379	63.053	1.7997	
16.26. 0	610.885		8.6833	0.9387	63.163	1.8005	
16.27. 0	612.803	142.6	8.7000	0.9395	61.245	1.7871	
16.28. 0	614.909		8.7167	0.9404	59.139	1.7719	
16.29. 0	615.845		8.7333	0.9412	58.203	1.7649	
16.30. 0	616.277		8.7500	0.9420	57.771	1.7617	
16.31. 0	616.466		8.7667	0.9428	57.582	1.7603	
16.32. 0	616.588		8.7833	0.9437	57.460	1.7594	
16.33. 0	616.637		8.8000	0.9445	57.411	1.7590	
16.34. 0	616.686		8.8167	0.9453	57.362	1.7586	
16.35. 0	616.700		8.8333	0.9461	57.348	1.7585	
16.36. 0	616.726		8.8500	0.9469	57.322	1.7583	
16.37. 0	616.746	142.6	8.8667	0.9478	57.302	1.7582	
16.38. 0	616.752		8.8833	0.9486	57.296	1.7581	
16.39. 0	616.785		8.9000	0.9494	57.263	1.7579	
16.40. 0	616.797		8.9167	0.9502	57.251	1.7578	
16.41. 0	616.797		8.9333	0.9510	57.251	1.7578	
16.42. 0	616.778		8.9500	0.9518	57.270	1.7579	
16.43. 0	616.811		8.9667	0.9526	57.237	1.7577	
16.44. 0	616.842		8.9833	0.9534	57.206	1.7574	
16.45. 0	616.874		9.0000	0.9542	57.174	1.7572	
16.46. 0	616.904		9.0167	0.9550	57.144	1.7570	
16.47. 0	616.904	142.6	9.0333	0.9558	57.144	1.7570	
16.48. 0	616.897		9.0500	0.9566	57.151	1.7570	

CHANGE CHOKE TO 48 /64 ADJ.

72

CHANGE CHOKE TO 48 /64 FIX



FLOPETROL
PRESSURE & TEMPERATURE CALCULATIONS

SECTION 2
PAGE 10
REMARKS

TIME HR. MN. SS	PRESS. BARS	TEMP. DEG. C	DEL. T (HOURS)	LOG DEL. T	DEL. P BARS	LOG DEL. P	REMARKS
16.49. 0	616.902		9.0667	0.9574	57.146	1.7570	
16.50. 0	616.915		9.0833	0.9582	57.133	1.7569	
16.51. 0	616.913		9.1000	0.9590	57.135	1.7569	
16.52. 0	616.887		9.1167	0.9598	57.161	1.7571	
16.53. 0	616.900		9.1333	0.9606	57.148	1.7570	
16.54. 0	616.933		9.1500	0.9614	57.115	1.7568	
16.55. 0	616.935		9.1667	0.9622	57.113	1.7567	
16.56. 0	616.925		9.1833	0.9630	57.123	1.7568	
16.57. 0	616.935	142.6	9.2000	0.9638	57.113	1.7567	
16.58. 0	616.955		9.2167	0.9646	57.093	1.7566	
16.59. 0	616.949		9.2333	0.9654	57.099	1.7566	
17. 0. 0	616.953		9.2500	0.9661	57.095	1.7566	
17. 1. 0	616.974		9.2667	0.9669	57.074	1.7564	
17. 2. 0	617.012		9.2833	0.9677	57.036	1.7561	
17. 3. 0	617.038		9.3000	0.9685	57.010	1.7560	
17. 4. 0	617.048		9.3167	0.9693	57.000	1.7559	
17. 5. 0	617.048		9.3333	0.9700	57.000	1.7559	
17. 6. 0	617.038		9.3500	0.9708	57.010	1.7560	
17. 7. 0	617.025		9.3667	0.9716	57.023	1.7561	
17. 8. 0	617.030		9.3833	0.9724	57.018	1.7560	
17. 9. 0	617.062		9.4000	0.9731	56.986	1.7558	
17.10. 0	617.063		9.4167	0.9739	56.985	1.7558	
17.11. 0	617.071		9.4333	0.9747	56.977	1.7557	
17.12. 0	617.093		9.4500	0.9754	56.955	1.7555	
17.13. 0	617.113		9.4667	0.9762	56.935	1.7554	
17.14. 0	617.094		9.4833	0.9770	56.954	1.7555	
17.15. 0	617.089		9.5000	0.9777	56.959	1.7556	
17.16. 0	617.114		9.5167	0.9785	56.934	1.7554	
17.17. 0	617.158		9.5333	0.9792	56.890	1.7550	
17.18. 0	617.191	142.6	9.5500	0.9800	56.857	1.7548	
17.19. 0	617.203		9.5667	0.9808	56.845	1.7547	
17.20. 0	617.192		9.5833	0.9815	56.856	1.7548	
17.21. 0	617.186		9.6000	0.9823	56.862	1.7548	
17.22. 0	617.199		9.6167	0.9830	56.849	1.7547	
17.23. 0	617.209		9.6333	0.9838	56.839	1.7546	
17.24. 0	617.217		9.6500	0.9845	56.831	1.7546	
17.25. 0	617.221		9.6667	0.9853	56.827	1.7546	
17.30. 0	617.257	142.6	9.7500	0.9890	56.791	1.7543	
17.35. 0	617.324		9.8333	0.9927	56.724	1.7538	
17.40. 0	617.362	142.6	9.9167	0.9964	56.686	1.7535	
17.45. 0	617.405		10.0000	1.0000	56.643	1.7531	
17.50. 0	617.472	142.6	10.0833	1.0036	56.576	1.7526	

FLOPETROL
PRESSURE & TEMPERATURE CALCULATIONS

TIME HR.-MIN.-SS	PRESS. BARS	TEMP. DEG.C	DEL.T (HOURS)	LOG DEL.T	DEL.P BARS	LOG DEL.P	REMARKS
17.55. 0	617.523		10.1667	1.0072	56.525	1.7522	74
18. 0. 0	617.553	142.6	10.2500	1.0107	56.495	1.7520	
18. 5. 0	617.594		10.3333	1.0142	56.454	1.7517	
18.10. 0	617.666	143.0	10.4167	1.0177	56.382	1.7511	
18.15. 0	617.706		10.5000	1.0212	56.340	1.7508	
18.20. 0	617.749	143.0	10.5833	1.0246	56.299	1.7505	
18.25. 0	617.745		10.6667	1.0280	56.303	1.7505	
18.30. 0	617.776	143.0	10.7500	1.0314	56.272	1.7503	
18.35. 0	617.845		10.8333	1.0348	56.203	1.7496	
18.40. 0	617.870	143.0	10.9167	1.0381	56.178	1.7496	
18.45. 0	617.890		11.0000	1.0414	56.158	1.7494	
18.50. 0	617.901	143.0	11.0833	1.0447	56.147	1.7493	
18.55. 0	617.969		11.1667	1.0479	56.079	1.7488	
19. 0. 0	618.023	143.0	11.2500	1.0512	56.025	1.7484	
19. 5. 0	618.048		11.3333	1.0544	56.000	1.7482	
19.10. 0	618.096	143.0	11.4167	1.0575	55.952	1.7478	
19.15. 0	618.117		11.5000	1.0607	55.931	1.7477	
19.20. 0	619.250	143.0	11.5833	1.0638	54.798	1.7388	
19.25. 0	619.291		11.6667	1.0669	54.757	1.7384	76
19.30. 0	619.411	143.0	11.7500	1.0700	54.637	1.7375	
19.35. 0	619.392		11.8333	1.0731	54.656	1.7376	
19.40. 0	619.467	143.0	11.9167	1.0762	54.581	1.7370	
19.45. 0	619.464		12.0000	1.0792	54.584	1.7371	
19.50. 0	619.536	143.0	12.0833	1.0822	54.512	1.7365	
19.55. 0	619.535		12.1667	1.0852	54.513	1.7365	
20. 0. 0	619.582	143.0	12.2500	1.0881	54.466	1.7361	
20. 5. 0	619.653		12.3333	1.0911	54.395	1.7356	
20.10. 0	619.668	143.0	12.4167	1.0940	54.380	1.7354	77
20.15. 0	620.123		12.5000	1.0969	53.925	1.7318	
20.20. 0	620.171	143.0	12.5833	1.0998	53.877	1.7314	
20.25. 0	620.173		12.6667	1.1027	53.875	1.7314	
20.30. 0	620.148	143.0	12.7500	1.1055	53.900	1.7316	
20.35. 0	620.196		12.8333	1.1083	53.852	1.7312	
20.40. 0	620.208	143.0	12.9167	1.1112	53.840	1.7311	
20.45. 0	620.256		13.0000	1.1139	53.792	1.7307	
20.50. 0	620.278	143.0	13.0833	1.1167	53.770	1.7305	
20.55. 0	620.342		13.1667	1.1195	53.706	1.7300	78
21. 0. 0	620.370	143.0	13.2500	1.1222	53.678	1.7298	
21. 5. 0	620.410		13.3333	1.1249	53.638	1.7295	
21. 6. 0	620.398		13.3500	1.1255	53.650	1.7296	
21. 7. 0	620.395		13.3667	1.1260	53.653	1.7296	
21. 8. 0	620.393	143.0	13.3833	1.1266	53.655	1.7296	

FLOPETROL
PRESSURE & TEMPERATURE CALCULATIONS

REMARKS

78

TIME HR.:MM.:SS	PRESS. BARS	TEMP. DEG.C	DEL.T (HOURS)	LOG DEL.T	DEL.P BARS	LOG DEL.P	LOG T-DEL.T DEL.T
21.9.0	620.393	143.0	13.4000	1.1271	53.655	1.7296	
21.10.0	620.380	143.0	13.4167	1.1276	53.668	1.7297	
21.11.0	620.398	143.0	13.4333	1.1282	53.650	1.7296	
21.12.0	620.418	143.0	13.4500	1.1287	53.630	1.7294	
21.13.0	620.431	143.0	13.4667	1.1293	53.617	1.7293	
21.14.0	620.434	143.0	13.4833	1.1298	53.614	1.7293	
21.15.0	620.457	143.0	13.5000	1.1303	53.591	1.7291	
21.16.0	620.487	143.0	13.5167	1.1309	53.561	1.7288	
21.17.0	620.492	143.0	13.5333	1.1314	53.556	1.7288	
21.18.0	620.490	143.0	13.5500	1.1319	53.558	1.7288	
21.19.0	620.503	143.0	13.5667	1.1325	53.545	1.7287	
21.20.0	620.527	143.0	13.5833	1.1330	53.521	1.7285	
21.21.0	620.550	143.0	13.6000	1.1335	53.498	1.7283	
21.22.0	620.532	143.0	13.6167	1.1341	53.516	1.7285	
21.23.0	620.494	143.0	13.6333	1.1346	53.554	1.7288	
21.24.0	620.492	143.0	13.6500	1.1351	53.556	1.7288	
21.25.0	620.525	143.0	13.6667	1.1357	53.523	1.7285	
21.26.0	620.546	143.0	13.6833	1.1362	53.502	1.7284	
21.27.0	620.551	143.0	13.7000	1.1367	53.497	1.7283	
21.28.0	620.546	143.0	13.7167	1.1372	53.502	1.7284	
21.29.0	620.527	143.0	13.7333	1.1378	53.521	1.7285	
21.30.0	620.528	143.0	13.7500	1.1383	53.520	1.7285	
21.31.0	620.521	143.0	0.0000	-1.7782	15.414	1.1879	SHUT IN TIME 21.31.0
21.32.0	635.935	143.0	0.0167	-1.4771	37.620	1.5754	2.5488
21.33.0	658.141	143.0	0.0333	-1.3010	41.050	1.6133	2.3733
21.34.0	661.571	143.0	0.0500	-1.1761	42.819	1.6316	FLOWING PRES. 620.521
21.35.0	663.340	143.0	0.0667	-1.0792	44.154	1.6450	2.2490
21.36.0	664.675	143.0	0.0833	-1.0000	45.151	1.6547	2.1527
21.37.0	665.672	143.5	0.1000	-0.9331	45.375	1.6568	2.0741
21.38.0	665.896	143.5	0.1167	-0.8751	45.598	1.6589	2.0077
21.39.0	666.119	143.5	0.1333	-0.8239	45.822	1.6611	FLOW TIME T [HOURS] 11.45.36
21.40.0	666.343	143.5	0.1500	-0.7782	46.046	1.6632	1.8998
21.41.0	666.567	143.5	0.1667	-0.7368	46.269	1.6653	1.8547
21.42.0	666.790	143.5	0.1833	-0.6990	46.493	1.6674	1.8139
21.43.0	667.014	143.5	0.2000	-0.6642	46.716	1.6695	1.7767
21.44.0	667.237	143.5	0.2167	-0.6320	47.446	1.6762	1.7425
21.45.0	667.967	143.5	0.2333	-0.6021	47.977	1.6762	1.7110
21.46.0	668.498	143.5	0.2500	-0.5740	48.392	1.6810	1.6816
21.47.0	668.913	143.5	0.2667	-0.5477	48.726	1.6848	1.6542
21.48.0	669.247	143.5	0.2833	-0.5229	48.995	1.6878	1.6284
21.49.0	669.516	143.5	0.3000	-0.4994	49.225	1.6902	1.6042
21.50.0	669.746	143.5	0.3167			1.6922	1.5813

FLCPTROL
PRESSURE & TEMPERATURE CALCULATIONS

TIME HR.,MM.,SS	PRESS. BARS	TEMP. DEG.C	DEL.T (HOURS)	LOG DEL.T	DEL.P BARS	LOG DEL.P	LOG T+DEL.T DEL.T	REMARKS
21.51. 0	669.942	143.5	0.3333	-0.4771	49.421	1.6939	1.5597	
21.52. 0	670.107	143.5	0.3500	-0.4559	49.586	1.6954	1.5391	
21.53. 0	670.254	143.5	0.3667	-0.4357	49.733	1.6966	1.5195	
21.54. 0	670.382	143.5	0.3833	-0.4164	49.861	1.6978	1.5008	
21.55. 0	670.496	143.5	0.4000	-0.3979	49.975	1.6988	1.4829	
21.56. 0	670.598	143.5	0.4167	-0.3802	50.077	1.6996	1.4657	
21.57. 0	670.696	143.5	0.4333	-0.3632	50.175	1.7005	1.4493	
21.58. 0	670.785	143.5	0.4500	-0.3468	50.264	1.7013	1.4335	
21.59. 0	670.864	143.5	0.4667	-0.3310	50.343	1.7019	1.4183	
22. 0. 0	670.941	143.5	0.4833	-0.3158	50.420	1.7026	1.4037	
22. 1. 0	671.027	143.5	0.5000	-0.3010	50.506	1.7033	1.3895	
22. 2. 0	671.078	143.5	0.5167	-0.2868	50.557	1.7038	1.3759	
22. 3. 0	671.146	143.5	0.5333	-0.2730	50.625	1.7044	1.3627	
22. 4. 0	671.207	143.5	0.5500	-0.2596	50.686	1.7049	1.3499	
22. 5. 0	671.267	143.5	0.5667	-0.2467	50.746	1.7054	1.3375	
22. 6. 0	671.319	143.5	0.5833	-0.2341	50.798	1.7058	1.3255	
22. 7. 0	671.370	143.0	0.6000	-0.2218	50.849	1.7063	1.3139	
22. 8. 0	671.351	143.0	0.6167	-0.2099	50.830	1.7061	1.3026	
22. 9. 0	671.398	143.0	0.6333	-0.1984	50.877	1.7065	1.2916	
22.10. 0	671.443	143.0	0.6500	-0.1871	50.922	1.7069	1.2809	
22.11. 0	671.486	143.0	0.6667	-0.1761	50.965	1.7073	1.2704	
22.12. 0	671.527	143.0	0.6833	-0.1654	51.006	1.7076	1.2603	
22.13. 0	671.568	143.0	0.7000	-0.1549	51.047	1.7080	1.2504	
22.14. 0	671.606	143.0	0.7167	-0.1447	51.085	1.7083	1.2408	
22.15. 0	671.646	143.0	0.7333	-0.1347	51.125	1.7086	1.2314	
22.16. 0	671.682	143.0	0.7500	-0.1249	51.161	1.7089	1.2222	
22.17. 0	671.717	142.6	0.7667	-0.1154	51.196	1.7092	1.2132	
22.18. 0	671.695	142.6	0.7833	-0.1061	51.174	1.7090	1.2045	
22.19. 0	671.726	142.6	0.8000	-0.0969	51.205	1.7093	1.1959	
22.20. 0	671.757	142.6	0.8167	-0.0880	51.236	1.7096	1.1875	
22.21. 0	671.787	142.6	0.8333	-0.0792	51.266	1.7098	1.1793	
22.22. 0	671.815	142.6	0.8500	-0.0706	51.294	1.7101	1.1713	
22.23. 0	671.845	142.6	0.8667	-0.0621	51.324	1.7103	1.1634	
22.24. 0	671.873	142.6	0.8833	-0.0539	51.352	1.7106	1.1557	
22.25. 0	671.897	142.6	0.9000	-0.0458	51.376	1.7108	1.1482	
22.26. 0	671.924	142.6	0.9167	-0.0378	51.403	1.7110	1.1408	
22.27. 0	671.947	142.1	0.9333	-0.0300	51.426	1.7112	1.1335	
22.28. 0	671.903	142.1	0.9500	-0.0223	51.382	1.7108	1.1264	
22.29. 0	671.924	142.1	0.9667	-0.0147	51.403	1.7110	1.1194	
22.30. 0	671.949	142.1	0.9833	-0.0073	51.428	1.7112	1.1126	
22.31. 0	671.970	142.1	1.0000	0.0000	51.449	1.7114	1.1059	
22.32. 0	671.992	142.1	1.0167	0.0072	51.471	1.7116	1.0992	

FLOPETROL
PRESSURE & TEMPERATURE CALCULATIONS

TIME HR. MN. SS	PRESS. BARS	TEMP. DEG. C	DEL. T (HOURS)	LOG DEL. T	DEL. P BARS	LOG DEL. P	LOG T+DEL. T DEL. T	REMARKS
22.33.00	672.019	142.1	1.0333	0.0142	51.498	1.7118	1.0927	
22.34.00	672.040	142.1	1.0500	0.0212	51.519	1.7120	1.0864	
22.35.00	672.060	142.1	1.0667	0.0280	51.539	1.7121	1.0801	
22.40.00	672.155	142.1	1.1500	0.0607	51.634	1.7129	1.0502	
22.45.00	672.238	142.1	1.2333	0.0911	51.717	1.7136	1.0226	
22.50.00	672.244	141.6	1.3167	0.1195	51.723	1.7137	0.9970	
22.55.00	672.315	141.6	1.4000	0.1461	51.794	1.7143	0.9731	
23.00.00	672.376	141.6	1.4833	0.1712	51.855	1.7148	0.9508	
23.05.00	672.430	141.6	1.5667	0.1950	51.909	1.7152	0.9297	
23.10.00	672.412	141.1	1.6500	0.2175	51.891	1.7151	0.9099	81
23.15.00	672.465	141.1	1.7333	0.2389	51.944	1.7155	0.8912	
23.20.00	672.511	141.1	1.8167	0.2593	51.990	1.7159	0.8735	
23.25.00	672.555	141.1	1.9000	0.2788	52.034	1.7163	0.8567	
23.30.00	672.524	140.6	1.9833	0.2974	52.003	1.7160	0.8407	
23.35.00	672.562	140.6	2.0667	0.3153	52.041	1.7163	0.8254	
23.40.00	672.599	140.6	2.1500	0.3324	52.078	1.7167	0.8109	
23.45.00	672.633	140.6	2.2333	0.3490	52.112	1.7169	0.7970	
23.50.00	672.668	140.6	2.3167	0.3649	52.147	1.7172	0.7836	
23.55.00	672.697	140.6	2.4000	0.3802	52.176	1.7175	0.7709	
24.00.00	672.659	140.1	2.4833	0.3950	52.138	1.7172	0.7586	
24.05.00	672.659	140.1	2.4833	0.3950	52.138	1.7172	0.7586	01.10.82
00.10.00	672.686	140.1	2.5667	0.4094	52.165	1.7174	0.7468	
00.15.00	672.713	140.1	2.6500	0.4232	52.192	1.7176	0.7354	
00.20.00	672.739	140.1	2.7333	0.4367	52.218	1.7176	0.7245	
00.25.00	672.764	140.1	2.8167	0.4497	52.243	1.7180	0.7139	
00.30.00	672.789	140.1	2.9000	0.4624	52.268	1.7182	0.7037	
00.35.00	672.812	140.1	2.9833	0.4747	52.291	1.7184	0.6939	
00.40.00	672.835	140.1	3.0667	0.4867	52.314	1.7186	0.6844	
00.45.00	672.786	139.6	3.1500	0.4983	52.265	1.7182	0.6752	
00.50.00	672.806	139.6	3.2333	0.5097	52.285	1.7184	0.6662	
00.55.00	672.827	139.6	3.3167	0.5207	52.306	1.7186	0.6576	
01.00.00	672.847	139.6	3.4000	0.5315	52.326	1.7187	0.6492	
01.05.00	672.867	139.6	3.4833	0.5420	52.346	1.7189	0.6411	
01.10.00	672.887	139.6	3.5667	0.5523	52.366	1.7190	0.6332	
01.15.00	672.905	139.6	3.6500	0.5623	52.384	1.7192	0.6255	
01.20.00	672.923	139.6	3.7333	0.5721	52.402	1.7193	0.6180	
01.25.00	672.874	139.1	3.8167	0.5817	52.353	1.7189	0.6108	
01.30.00	672.892	139.1	3.9000	0.5911	52.371	1.7191	0.6037	
01.35.00	672.907	139.1	3.9833	0.6002	52.386	1.7192	0.5969	
01.40.00	672.923	139.1	4.0667	0.6092	52.402	1.7193	0.5902	
01.45.00	672.941	139.1	4.1500	0.6180	52.420	1.7195	0.5836	
01.50.00	672.958	139.1	4.2333	0.6267	52.437	1.7196	0.5773	

FLOPETROL
PRESSURE & TEMPERATURE CALCULATIONS

REMARKS

TIME HR. MIN. SS	PRESS. BARS	TEMP. DEG. C	DEL. T (HOURS)	LOG DEL. T	DEL. P BARS	LOG DEL. P	LOG T+DEL. T DEL. T
1.50. 0	672.974	139.1	4.3167	0.6351	52.453	1.7198	0.5710
1.55. 0	673.181	139.1	4.4000	0.6435	52.660	1.7215	0.5650
2. 0. 0	672.998	139.1	4.4833	0.6516	52.477	1.7200	0.5591
2.10. 0	673.022	139.1	4.6500	0.6675	52.501	1.7202	0.5477
2.20. 0	673.050	139.1	4.8167	0.6827	52.529	1.7204	0.5368
2.30. 0	673.081	139.1	4.9833	0.6975	52.560	1.7207	0.5263
2.40. 0	673.032	138.6	5.1500	0.7118	52.511	1.7203	0.5163
2.50. 0	673.058	138.6	5.3167	0.7256	52.537	1.7205	0.5068
3. 0. 0	673.089	138.6	5.4833	0.7390	52.568	1.7207	0.4976
3.10. 0	673.114	138.6	5.6500	0.7520	52.593	1.7209	0.4888
3.20. 0	673.134	138.6	5.8167	0.7647	52.613	1.7211	0.4803
3.30. 0	673.154	138.6	5.9833	0.7769	52.633	1.7213	0.4721
3.40. 0	673.181	138.6	6.1500	0.7889	52.660	1.7215	0.4642
3.50. 0	673.202	138.6	6.3167	0.8005	52.681	1.7217	0.4566
4. 0. 0	673.223	138.6	6.4833	0.8118	52.702	1.7218	0.4493
4.10. 0	673.240	138.6	6.6500	0.8228	52.719	1.7220	0.4422
4.20. 0	673.253	138.6	6.8167	0.8336	52.732	1.7221	0.4354
4.30. 0	673.203	138.1	6.9833	0.8441	52.682	1.7217	0.4288
4.40. 0	673.222	138.1	7.1500	0.8543	52.701	1.7218	0.4224
4.50. 0	673.249	138.1	7.3167	0.8643	52.728	1.7220	0.4162
5. 0. 0	673.267	138.1	7.4833	0.8741	52.746	1.7222	0.4102
5.10. 0	673.280	138.1	7.6500	0.8837	52.759	1.7223	0.4044
5.20. 0	673.295	138.1	7.8167	0.8930	52.774	1.7224	0.3987
5.30. 0	673.309	138.1	7.9833	0.9022	52.788	1.7225	0.3932
5.40. 0	673.323	138.1	8.1500	0.9112	52.802	1.7227	0.3879
5.50. 0	673.344	138.1	8.3167	0.9199	52.823	1.7228	0.3827
6. 0. 0	673.370	138.1	8.4833	0.9286	52.849	1.7230	0.3777
6.10. 0	673.382	138.1	8.6500	0.9370	52.861	1.7231	0.3728
6.20. 0	673.387	138.1	8.8167	0.9453	52.866	1.7232	0.3681
6.30. 0	673.400	138.1	8.9833	0.9534	52.879	1.7233	0.3634
6.40. 0	673.418	138.1	9.1500	0.9614	52.897	1.7234	0.3589
6.50. 0	673.422	138.1	9.3167	0.9693	52.901	1.7235	0.3545
7. 0. 0	673.431	138.1	9.4833	0.9770	52.910	1.7235	0.3503
7.10. 0	673.448	138.1	9.6500	0.9845	52.927	1.7237	0.3461
7.20. 0	673.466	138.1	9.8167	0.9920	52.945	1.7238	0.3420
7.30. 0	673.467	138.1	9.9833	0.9993	52.966	1.7240	0.3381
7.40. 0	673.494	138.1	10.1500	1.0065	52.973	1.7241	0.3342
7.50. 0	673.502	138.1	10.3167	1.0135	52.981	1.7241	0.3304
8. 0. 0	673.438	137.6	10.4833	1.0205	52.917	1.7236	0.3267
8.10. 0	673.457	137.6	10.6500	1.0273	52.936	1.7238	0.3231
8.20. 0	673.460	137.6	10.8167	1.0341	52.939	1.7238	0.3196
8.30. 0	673.470	137.6	10.9833	1.0407	52.949	1.7239	0.3161

FLOPETROL
PRESSURE & TEMPERATURE CALCULATIONS

TIME HR. MIN. SS	PRESS. BARS	TEMP. DEG. C	DEL. T (HOURS)	LOG DEL. T	DEL. P BARS	LOG DEL. P	LOG T-DEL. T DEL. T	REMARKS
8.40. 0	673.490	137.6	11.1500	1.0473	52.969	1.7240	0.3126	
8.50. 0	673.505	137.6	11.3167	1.0537	52.984	1.7241	0.3095	
9. 0. 0	673.511	137.6	11.4833	1.0601	52.990	1.7242	0.3062	94
9.10. 0	673.525	137.6	11.6500	1.0663	53.004	1.7243	0.3031	
9.20. 0	673.536	137.6	11.8167	1.0725	53.015	1.7244	0.3000	
9.30. 0	673.545	137.6	11.9833	1.0786	53.024	1.7245	0.2970	
9.40. 0	673.549	137.6	12.1500	1.0846	53.028	1.7245	0.2940	
9.50. 0	673.562	137.6	12.3167	1.0905	53.041	1.7246	0.2911	95
10. 0. 0	673.578	137.6	12.4833	1.0963	53.057	1.7247	0.2883	
10.10. 0	673.579	137.6	12.6500	1.1021	53.058	1.7248	0.2855	
10.20. 0	673.594	137.6	12.8167	1.1078	53.073	1.7249	0.2827	
10.30. 0	673.599	137.6	12.9833	1.1134	53.078	1.7249	0.2801	96
10.40. 0	673.604	137.6	13.1500	1.1189	53.083	1.7250	0.2774	
10.50. 0	673.616	137.6	13.3167	1.1244	53.095	1.7251	0.2749	
11. 0. 0	673.624	137.6	13.4833	1.1298	53.103	1.7251	0.2723	
11.10. 0	673.629	137.6	13.6500	1.1351	53.108	1.7252	0.2699	
11.20. 0	673.635	137.6	13.8167	1.1404	53.114	1.7252	0.2674	97
11.30. 0	673.651	137.6	13.9833	1.1456	53.130	1.7253	0.2651	
11.40. 0	673.658	137.6	14.1500	1.1508	53.137	1.7254	0.2627	
11.50. 0	673.668	137.6	14.3167	1.1558	53.147	1.7255	0.2604	
12. 0. 0	673.678	137.6	14.4833	1.1609	53.157	1.7256	0.2582	98
12.15. 0	673.685	137.6	14.7333	1.1683	53.164	1.7256	0.2548	
12.30. 0	673.694	137.6	14.9833	1.1756	53.173	1.7257	0.2516	
12.45. 0	673.702	137.6	15.2333	1.1828	53.181	1.7258	0.2485	
13. 0. 0	673.711	137.6	15.4833	1.1899	53.190	1.7258	0.2454	99
13.15. 0	673.726	137.6	15.7333	1.1968	53.205	1.7260	0.2424	
13.30. 0	673.738	137.6	15.9833	1.2037	53.217	1.7261	0.2395	100
13.45. 0	673.749	137.6	16.2333	1.2104	53.228	1.7261	0.2366	
14. 0. 0	673.767	137.6	16.4833	1.2170	53.246	1.7263	0.2339	
14.15. 0	673.777	137.6	16.7333	1.2236	53.256	1.7264	0.2312	-10
14.30. 0	673.776	137.6	16.9833	1.2300	53.255	1.7264	0.2285	
14.45. 0	673.785	137.6	17.2333	1.2364	53.264	1.7264	0.2259	
15. 0. 0	673.795	137.6	17.4833	1.2426	53.274	1.7265	0.2234	-11
15.15. 0	673.813	137.6	17.7333	1.2488	53.292	1.7267	0.2209	
15.30. 0	673.816	137.6	17.9833	1.2549	53.295	1.7267	0.2185	
15.45. 0	673.757	137.1	18.2333	1.2609	53.236	1.7262	0.2162	-12
16. 0. 0	673.773	137.1	18.4833	1.2668	53.252	1.7263	0.2138	
16.15. 0	673.783	137.1	18.7333	1.2726	53.262	1.7264	0.2116	
16.30. 0	673.787	137.1	18.9833	1.2784	53.266	1.7265	0.2094	
16.45. 0	673.796	137.1	19.2333	1.2841	53.275	1.7265	0.2072	-13
17. 0. 0	673.803	137.1	19.4833	1.2897	53.282	1.7266	0.2051	
17.15. 0	673.811	137.1	19.7333	1.2952	53.290	1.7266	0.2030	

FLOPETROL
PRESSURE & TEMPERATURE CALCULATIONS

TIME HR. MIN. SS	PRESS. BARS	TEMP. DEG. C	DEL. T (HOURS)	LOG DEL. T	DEL. P BARS	LOG DEL. P	LOG T+DEL. T DEL. T	REMARKS
17.30. 0	673.816	137.1	19.9833	1.3007	53.295	1.7267	0.2010	-14
17.45. 0	673.816	137.1	20.2333	1.3061	53.295	1.7267	0.1990	
18. 0. 0	673.824	137.1	20.4833	1.3114	53.303	1.7268	0.1970	-15
18.15. 0	673.841	137.1	20.7333	1.3167	53.320	1.7269	0.1951	
18.30. 0	673.841	137.1	20.9833	1.3219	53.320	1.7269	0.1932	
18.45. 0	673.851	137.1	21.2333	1.3270	53.330	1.7270	0.1914	-16
19. 0. 0	673.863	137.1	21.4833	1.3321	53.342	1.7271	0.1896	
19.15. 0	673.867	137.1	21.7333	1.3371	53.346	1.7271	0.1878	
19.30. 0	673.882	137.1	21.9833	1.3421	53.361	1.7272	0.1861	-17
19.45. 0	673.887	137.1	22.2333	1.3470	53.366	1.7273	0.1844	
20. 0. 0	673.893	137.1	22.4833	1.3519	53.372	1.7273	0.1827	
20.15. 0	673.900	137.1	22.7333	1.3567	53.379	1.7274	0.1811	-18
20.30. 0	673.905	137.1	22.9833	1.3614	53.384	1.7274	0.1795	
20.45. 0	673.911	137.1	23.2333	1.3661	53.390	1.7275	0.1779	-19
21. 0. 0	673.917	137.1	23.4833	1.3708	53.396	1.7275	0.1763	
21.15. 0	673.922	137.1	23.7333	1.3754	53.401	1.7275	0.1748	-20
21.30. 0	673.930	137.1	23.9833	1.3799	53.409	1.7276	0.1733	
21.45. 0	673.936	137.1	24.2333	1.3844	53.415	1.7277	0.1718	-21
22. 0. 0	673.948	137.1	24.4833	1.3889	53.427	1.7278	0.1704	
22.15. 0	673.956	137.1	24.7333	1.3933	53.435	1.7278	0.1689	-22
22.30. 0	673.956	137.1	24.9833	1.3977	53.435	1.7278	0.1675	
22.45. 0	673.963	137.1	25.2333	1.4020	53.442	1.7279	0.1661	
23. 0. 0	673.964	137.1	25.4833	1.4063	53.443	1.7279	0.1648	-23
23.15. 0	673.968	137.1	25.7333	1.4105	53.447	1.7279	0.1635	
23.30. 0	673.971	137.1	25.9833	1.4147	53.450	1.7279	0.1621	
23.45. 0	673.971	137.1	26.2333	1.4189	53.450	1.7279	0.1609	02.10.82
24. 0. 0	673.976	137.1	26.4833	1.4230	53.455	1.7280	0.1596	
0.15. 0	673.986	137.1	26.7333	1.4271	53.465	1.7281	0.1583	
0.30. 0	673.998	137.1	26.9833	1.4311	53.477	1.7282	0.1571	
0.45. 0	674.002	137.1	27.2333	1.4351	53.481	1.7282	0.1559	
0.46. 0	674.002	137.1	27.2500	1.4354	53.481	1.7282	0.1558	
0.47. 0	674.002	137.1	27.2667	1.4356	53.481	1.7282	0.1557	
0.48. 0	674.004	137.1	27.2833	1.4359	53.483	1.7282	0.1556	END OF BUILD UP
0.49. 0	674.006							
0.50. 0	674.006							
0.51. 0	674.006							
0.52. 0	674.004							

END OF MEMORY SPACE IN TOOL.

FLOPETROL

Client : STATOIL

Section : **6**

Base : NWB

Field : WILDCAT

Page :
Report N°: ELS82/54

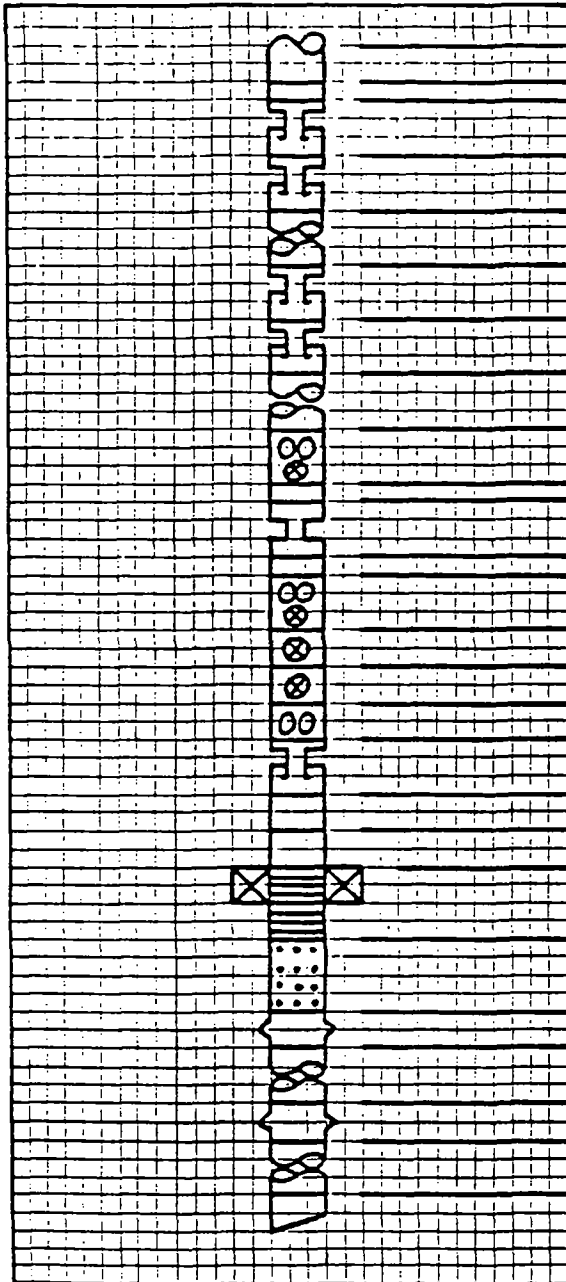
Well : 30/2-1

SEQUENCE OF EVENTS

DATE	TIME	OPERATION
28.09.	1982	
	11:30	EQUIPMENT ON BOARD. START CHECKING OF TOOL.
	12:18	TEST OF TOOL SSSR 81065/ CRG 81708
	12:47	TOOL ON RIG FLOOR. SAMPLING RATE 1MINUTE. BATTERY ON.
	13:02	TOOL IN NIPPLE START TO RUN IN THE HOLE.
29.09.	1982	
		TOOL RECORDING. PRESSURE TEST SURFACE EQUIPMENT.
		WAIT ON DAYLIGHT TO START TEST.
30.09.	1982	
	07.37	LPR VALVE OPEN.
	07.45	OPEN ED WELL ON 8/64" ADJUSTABLE CHOKE.
	07:52	CHANGED TO 32/64" ADJUSTABLE CHOKE.
	07:55	CHANGED TO 32/64" FIXED CHOKE.
	16:11	CHANGED TO 48/64" ADJUSTABLE CHOKE.
	16:25	CHANGED TO 48/64" FIXED CHOKE.
	21:31	SHUT IN WELL AT CHOKE MANIFOLD.
	21:37	OPENED CHOKE MANIFOLD TO TRY TO SHEARE APR-M VALVE.
	21:38	SHUT IN AT CHOKE MANIFOLD.
	21:43	APR-M VALVE SHEARED.
01.10.	1982	
		RECORDING BUILD UP.
02.10.	1982	
	00:48	PULLED STINGER OUT OF PACKER.
		END OF BUILD UP.
03.10	1982	
		SSDR OUT OF NIPPLE. END OF DST No 2.

N° DOP 107

-WELL COMPLETION DATA-



119 STD.+ 2 SINGLES + PUP 3 1/2"
X-O 3 1/2" TDS x 3 1/2" IF
SLIP JOINT OPEN

SLIP JOINT OPEN

12 JOINTS DRILL COLLARS

SLIP JOINT CLOSED

SLIP JOINT CLOSED

11 JOINTS DRILL COLLARS

APR-M CIRC. VALVE

X-O 3 1/2" IF x 3 1/2" FH
HANDLING CHOKE & SUB ASSY.

X-O 3 1/2" FH x 3 1/2" IF
APR-M REV. CIRC. VALVE

DRILL PIPE TESTER VALVE

LPR TESTER VALVE

FUL FLO HYD. BYPASS

BIG JOHN JARS

BAKER ROTARY SUB

BAKER MOD. "G" LOCATOR

BAKER MOD."D" PACKER AT 3730.65m

BAKER SEAL ASSY. AND PERF. JOINT

BAKER "F" NIPPLE

BAKER SPACER TUBE

BAKER "F" NIPPLE

BAKER SPACER TUBE

MULE SHOE WIRELINE ENTRY

REMARKS

* LISTING OF ALL DATA *
* * * * *
* ON TAPE *
* * * * *

TEMPERATURE IN DEG C
PRESSURE IN BAR A
TIME IN HH.MM SS

4

12.4800	876.231	877.086	877.084	12.5100	877.084	877.084	12.5200	877.066
12.5300	877.033	877.086	877.086	12.5500	877.086	877.086	12.5700	876.217
12.5700Temp	14.6	876.542	876.489	12.5900	876.489	876.489	13.0100	875.625
13.0200	876.806	875.308	876.141	13.0400	876.141	876.136	13.0600	876.442
13.0700	876.888	Temp 18.2	876.963	13.0800	876.963	876.957	13.1000	876.967
13.1100	876.539	875.698	876.973	13.1300	876.973	876.963	13.1500	876.979
13.1600	876.979	876.718	Temp 13.4	10.0000Temp	13.4	884.593	13.1900	886.218
13.2000	887.985	889.584	891.750	13.2200	891.750	893.886	13.2400	895.842
13.2500	898.584	901.215	903.978	13.2700	903.978	Temp 215.2	13.2800	897.371
13.2900	891.582	886.865	883.507	13.3100	883.507	871.656	13.3300	869.041

FILE

5

13.3400	868.403	862.772	858.906	13.3600	858.906	858.218	13.3700Temp	14.2
13.3800	861.036	861.828	862.239	13.4000	862.239	863.079	13.4200	863.386
13.4300	863.325	866.091	866.877	13.4500	866.877	866.883	13.4700	866.922
13.4700Temp	12.8	866.939	869.890	13.4900	869.890	870.374	13.5100	870.350
13.5200	870.381	869.883	869.955	13.5400	869.955	870.394	13.5600	870.177
13.5700	870.188	Temp 11.8	870.396	13.5800	870.396	869.981	14.0000	870.376
14.0100	869.745	869.773	869.748	14.0300	869.748	869.746	14.0500	870.174
14.0600	876.144	876.227	Temp 13.4	10.0000Temp	13.4	881.486	14.0900	879.871
14.1000	878.633	877.888	869.129	14.1200	869.129	868.869	14.1400	868.396
14.1500	868.293	868.965	875.404	14.1700	875.404	Temp 10.8	14.1800	874.400

FILE

6

14.1900	875.967	876.284	874.480	14.2100	874.480	874.478	14.2300	875.201
14.2400	877.229	874.391	875.536	14.2600	875.536	873.962	14.2700Temp	10.1
14.2800	875.407	874.244	874.298	14.3000	874.298	874.193	14.3200	875.310
14.3300	874.355	875.041	875.556	14.3500	875.556	875.581	14.3700	875.158
10.0000Temp	13.4	878.168	877.925	14.3900	877.925	876.482	14.4100	876.886
14.4200	876.169	875.898	875.566	14.4400	875.566	875.558	14.4600	875.994
14.4700	877.287	Temp 9.6	876.433	14.4800	876.433	877.288	14.5000	876.846
14.5100	876.802	876.800	876.762	14.5300	876.762	877.279	14.5500	877.281
14.5600	877.284	1143.370	Temp 9.7	14.5700Temp	9.7	1142.113	14.5900	1142.167
15.0000	1143.565	1143.347	1142.423	15.0200	1142.423	1144.111	15.0400	1143.908

FILE

7

15.0500	1144.069	1144.038	1150.322	15.0700Temp	10.6	1143.107	15.0800	1143.107
15.0900	1149.196	1149.134	1142.946	15.1100	1142.946	1142.081	15.1300	1141.770
15.1400	1141.058	1143.613	1149.775	15.1600	1149.775	1149.690	10.0000Temp	13.4
15.1800	1157.929	1157.496	1157.195	15.2000	1157.195	1157.976	15.2200	1154.899
15.2300	1156.495	1156.487	1155.641	15.2500	1155.641	1155.632	15.2700	1155.759
15.2700Temp	134.1	1155.614	1155.658	15.2900	1155.658	1155.744	15.3100	1155.656
15.3200	1155.658	1155.745	1155.710	15.3400	1155.710	1155.757	15.3600	1155.754
15.3700	1155.658	Temp 134.1	1155.654	15.3800	1155.654	1150.072	15.4000	1151.325
15.4100	1151.438	1151.440	1151.369	15.4300	1151.369	1151.382	15.4500	1151.278
15.4600	1147.967	1151.386	Temp 134.1	15.4700Temp	134.1	1151.386	15.4900	1147.810

FILE

8

15.5000	1151.440	1151.276	1151.274	15.5200	1151.274	1147.911	15.5400	1147.872
15.5500	1147.923	1151.386	1151.332	15.5700Temp	134.1	1147.911	15.5800	1151.413
15.5900	1151.288	1147.980	1151.304	16.0100	1151.304	1151.273	16.0300	1151.322
16.0400	1147.870	1147.978	1147.967	16.0600	1147.967	Temp 134.1	16.0700Temp	134.1
16.0800	1147.869	1147.965	1147.872	16.1000	1147.872	1147.976	16.1200	1147.980
16.1300	1147.845	1147.843	1147.952	16.1500	1147.952	1147.980	16.1700	1147.845
16.1700Temp	134.1	1147.950	1147.859	16.1900	1147.859	1147.953	16.2100	1147.967
16.2200	1147.870	1147.953	1147.950	16.2400	1147.950	1147.926	16.2600	1147.963
16.2700	1147.921	Temp 134.1	1147.976	16.2800	1147.976	1147.896	16.3000	1147.970
16.3100	1147.975	1147.973	1147.912	16.3300	1147.912	1147.973	16.3500	1147.924

9

16.3600	1147.872	16.3700	1147.899	16.3700Temp 134.1	1147.980	16.3900	1147.918
16.4000	1147.885	16.4100	1147.975	16.4200	1147.869	16.4400	1147.879
16.4500	1147.872	16.4600	1147.975	16.4700	1147.870	16.4800	1147.953
16.4900	1147.980	16.5000	1147.980	16.5100	1147.838	16.5300	1158.304
16.5400	1158.306	16.5500	1158.010	16.5600	1158.138	16.5700Temp 134.1	1158.348
16.5800	1158.220	16.5900	1158.362	17.0000	1158.245	17.0200	1158.348
17.0300	1158.321	17.0400	1158.331	17.0500	1158.226	17.0700	1158.349
17.0700Temp 134.1	1158.321	17.0800	1158.243	17.0900	1158.254	17.1100	1158.254
17.1200	1158.334	17.1300	1158.340	17.1400	1158.345	17.1600	1154.628
17.1700	1154.759	17.1700Temp 134.1	1154.786	17.1800	1154.786	17.2000	1154.695

FILE

10

17.2100	1154.731	17.2200	1154.737	17.2300	1154.894	17.2500	1158.132
17.2600	1154.564	17.2700	1154.790	17.2700Temp 134.1	1154.894	17.2900	1154.556
17.3000	1157.252	17.3100	1154.833	17.3200	1154.657	17.3400	1154.887
17.3500	1154.817	17.3600	1154.846	17.3700	1154.681	17.3800	1154.816
17.3900	1154.870	17.4000	1154.624	17.4100	1154.880	17.4300	1154.819
17.4400	1154.681	17.4500	1154.846	17.4600	1154.880	17.4700Temp 134.1	1154.819
17.4800	1154.400	17.4900	1151.264	17.5000	1151.420	17.5200	1150.980
17.5300	1151.349	17.5400	1150.115	17.5500	1151.359	17.5700	1150.927
17.5700Temp 134.1	1151.349	17.5800	1151.355	17.5900	1150.143	18.0100	1150.109
18.0200	1151.413	18.0300	1150.129	18.0400	1151.342	18.0600	1148.223

FILE

11

18.0700	1151.369	18.0700Temp 134.1	1151.251	18.0800	1151.251	18.1000	1151.366
18.1100	1148.240	18.1200	1151.264	18.1300	1148.357	18.1500	1151.433
18.1600	1151.427	18.1700	1151.379	18.1700Temp 134.1	1151.421	18.1900	1150.085
18.2000	1151.384	18.2100	1150.122	18.2200	1150.088	18.2400	1157.846
18.2500	1150.548	18.2600	1150.569	18.2700	1151.406	18.2800	1150.976
18.2900	1150.575	18.3000	1150.494	18.3100	1150.492	18.3300	1150.085
18.3400	1157.875	18.3500	1157.461	18.3600	1157.468	18.3700Temp 134.1	1150.085
18.3800	1158.334	18.3900	1157.037	18.4000	1157.847	18.4200	1157.821
18.4300	1157.821	18.4400	1157.846	18.4500	1158.356	18.4700	1157.827
18.4700Temp 134.1	1157.821	18.4800	1157.836	18.4900	1158.362	18.5100	1157.494

FILE

12

18.5200	1157.462	18.5300	1157.277	18.5400	1157.464	18.5600	1157.280
18.5700	1157.224	18.5700Temp 134.1	1157.277	18.5800	1157.280	19.0000	1157.442
19.0100	1157.471	19.0200	1158.134	19.0300	1158.030	19.0500	1158.214
19.0600	1157.995	19.0700	1158.240	19.0700Temp 134.1	1158.030	19.0900	1157.963
19.1000	1158.199	19.1100	1158.331	19.1200	1158.233	19.1400	1158.035
19.1500	1158.143	19.1600	1158.254	19.1700	1158.250	19.1800	1158.331
19.1900	1158.328	19.2000	1158.238	19.2100	1158.220	19.2300	1158.356
19.2400	1158.037	19.2500	1158.334	19.2600	1158.226	19.2700Temp 134.1	1158.356
19.2800	1158.022	19.2900	1158.132	19.3000	1158.238	19.3200	1158.037
19.3300	1130.661	19.3400	1130.577	19.3500	1130.457	19.3700	1158.035

FILE

13

19.3700Temp 134.1	1158.328	19.3800	1158.328	19.3900	1158.014	19.4100	1158.226
19.4200	1158.240	19.4300	1130.669	19.4400	1130.345	19.4600	1130.457
19.4700	1130.673	19.4700Temp 134.1	1130.669	19.4800	1130.474	19.5000	1130.690
19.5100	1130.352	19.5200	1130.574	19.5300	1130.467	19.5500	1130.339
19.5600	1130.688	19.5700	1130.569	19.5700Temp 134.1	1130.467	19.5900	1130.673
20.0000	1130.690	20.0100	1130.366	20.0200	1130.582	20.0400	1157.278
20.0500	1157.388	20.0600	1156.942	20.0700	1157.385	20.0800	1156.920
20.0900	1156.893	20.1000	1157.537	20.1100	1157.494	20.1300	1157.449
20.1400	1157.263	20.1500	1156.819	20.1600	1157.441	20.1700Temp 134.1	1157.449
20.1800	1156.692	20.1900	1157.060	20.2000	1157.244	20.2200	1158.145

14

20.2300	1156.831	20.2500	1156.739	20.2600	1158.362	20.2700	1156.712
20.2700Temp 134.1	1158.109	20.2900	1157.050	20.3000	1157.927	20.3100	1158.116
20.3200	1158.027	20.3400	1154.695	20.3500	1153.591	20.3600	1154.468
20.3700	1153.991	20.3800	1154.011	20.3900	1157.030	20.4000	1157.496
20.4100	1150.546	20.4300	1148.835	20.4400	1148.838	20.4500	1147.960
20.4600	1153.109	20.4700Temp 134.1	1157.435	20.4800	1156.591	20.4900	1102.825
20.5000	1151.435	20.5200	1151.440	20.5300	1151.315	20.5400	1150.992
20.5500	1151.249	20.5700	1155.975	20.5700Temp 134.1	1102.573	20.5800	1157.819
20.5900	1102.237	21.0100	1102.733	21.0200	1102.573	21.0300	1102.829
21.0400	1101.063	21.0500	1094.401	21.0600	1094.182	21.0700Temp 134.1	1102.829

FILE

15

21.0800	1103.055	21.1000	1089.186	21.1100	1089.011	21.1200	1088.968
21.1300	1085.576	21.1500	1097.664	21.1600	1070.034	21.1700	1092.646
21.1700Temp 134.1	1092.541	21.1900	1091.359	21.2000	1075.463	21.2100	1072.450
21.2200	1072.639	21.2400	1068.574	21.2500	1068.571	21.2600	1073.620
21.2700	1069.865	21.2800	1075.466	21.2900	1075.359	21.3000	1075.461
21.3100	1075.013	21.3300	1102.139	21.3400	1082.361	21.3500	1082.347
21.3600	1102.779	21.3700Temp 134.1	1102.139	21.3800	1325.082	21.3900	1325.222
21.4000	1321.393	21.4200	1325.003	21.4300	1324.898	21.4400	1087.479
21.4500	1091.917	21.4700	1091.606	21.4700Temp 134.1	1102.195	21.4800	1094.615
21.4900	1097.875	21.5100	1097.879	21.5200	1102.195	21.5300	1099.602

FILE

16

21.5400	1099.366	21.5600	1102.290	21.5700	1102.816	21.5700Temp 134.1	1091.804
21.5800	992.861	22.0000	1013.092	22.0100	1013.181	22.0200	1013.395
22.0300	1011.677	22.0500	1013.092	22.0600	1018.143	22.0700	1003.494
22.0700Temp 134.1	1005.989	22.0900	1016.532	22.1000	1016.750	22.1100	1013.260
22.1200	1012.649	22.1400	1018.385	22.1500	1099.361	22.1600	1011.331
22.1700	1102.802	22.1800	1099.550	22.1900	1103.045	22.2000	1102.829
22.2100	1103.045	22.2300	1102.950	22.2400	1103.055	22.2500	1102.836
22.2600	1103.053	22.2700Temp 134.1	1102.861	22.2800	1102.843	22.2900	1102.839
22.3000	1103.058	22.3100	1075.248	22.3200	1075.412	22.3300	1075.466
22.3500	1075.466	22.3700	1075.305	22.3700Temp 134.1	1075.412	22.3800	1091.804

FILE

17

22.3900	1094.724	22.4100	1089.231	22.4200	1089.257	22.4300	1066.563
22.4400	1089.257	22.4600	1087.443	22.4700	1087.530	22.4700Temp 134.1	1066.563
22.4800	1046.187	22.5000	1047.482	22.5100	1047.443	22.5200	1041.020
22.5300	1046.825	22.5500	1042.645	22.5600	1044.473	22.5700	1044.197
22.5700Temp 134.1	1045.949	22.5900	1046.109	23.0000	1046.102	23.0100	1047.887
23.0200	1045.949	23.0400	1047.772	23.0500	1075.224	23.0600	1074.968
23.0700	1069.003	23.0800	1069.859	23.0900	1069.701	23.1000	1066.635
23.1100	1063.612	23.1300	1064.043	23.1400	1057.811	23.1500	1058.616
23.1600	1058.658	23.1700Temp 134.1	1064.043	23.1800	1053.716	23.1900	1054.798
23.2000	1054.798	23.2200	451.811	23.2300	449.314	23.2400	450.119

FILE

18

23.2500	450.123	23.2700Temp 134.1	450.929	23.2800	451.704	23.2800	451.704
23.2900	435.988	23.3100	435.985	23.3200	438.490	23.3300	444.493
23.3400	445.034	23.3600	441.351	23.3700	425.124	23.3700Temp 134.1	444.493
23.3800	425.130	23.3900	425.176	23.4100	420.181	23.4200	419.978
23.4300	421.691	23.4500	440.858	23.4600	440.910	23.4700	435.161
23.4700Temp 134.1	435.720	23.4900	435.466	23.5000	429.517	23.5100	430.161
23.5200	431.151	23.5400	451.884	23.5500	451.808	23.5600	451.553
23.5700	450.958	23.5800	451.802	23.5900	451.559	23.6000	450.952
0.0100	450.975	0.0300	450.923	0.0400	450.978	0.0500	450.939
0.0600	450.929	0.0700Temp 134.1	451.916	0.0800	451.694	0.0900	450.939

19

0.1000	448.370	0.1100	448.169	0.1200	448.482	0.1300	448.248	0.1400	446.609
0.1500	446.594	0.1600	446.465	0.1700	446.563	0.1700Temp	134.1	0.1800	445.748
0.1900	445.968	0.2000	445.776	0.2100	445.776	0.2200	445.769	0.2300	445.763
0.2400	445.724	0.2500	445.776	0.2600	445.763	0.2700	450.088	0.2700Temp	134.1
0.2800	450.981	0.2900	450.961	0.3000	450.902	0.3100	396.022	0.3200	390.228
0.3300	391.050	0.3400	391.103	0.3500	391.074	0.3600	381.959	0.3700	385.234
0.3700Temp	134.1	0.3800	384.859	0.3900	385.273	0.4000	391.706	0.4100	386.946
0.4200	372.018	0.4300	371.966	0.4400	371.568	0.4500	370.308	0.4600	366.612
0.4700	366.599	0.4700Temp	134.1	0.4800	368.277	0.4900	367.839	0.5000	367.827
0.5100	371.966	0.5200	371.137	0.5300	371.150	0.5400	371.111	0.5500	382.903

FILE

20

0.5600	376.985	0.5700	376.931	0.5700Temp	134.1	0.5800	381.973	0.5900	345.363
1.0000	345.460	1.0100	345.020	1.0200	341.773	1.0300	341.288	1.0400	341.307
1.0500	336.363	1.0600	341.280	1.0700	341.293	1.0700Temp	134.1	1.0800	340.424
1.0900	342.901	1.1000	342.872	1.1100	340.513	1.1200	343.611	1.1300	345.284
1.1400	344.876	1.1500	345.028	1.1600	344.842	1.1700	343.781	1.1700Temp	134.1
1.1800	343.704	1.1900	343.686	1.2000	344.839	1.2100	345.056	1.2200	344.678
1.2300	344.832	1.2400	344.772	1.2500	343.841	1.2600	344.804	1.2700	343.840
1.2700Temp	134.1	1.2800	343.739	1.2900	343.143	1.3000	303.755	1.3100	302.470
1.3200	302.179	1.3300	302.488	1.3400	302.175	1.3500	300.115	1.3600	299.182
1.3700	305.330	1.3700Temp	134.1	1.3800	305.381	1.3900	305.375	1.4000	345.167

FILE

21

1.4100	344.664	1.4200	344.540	1.4300	344.551	1.4400	342.900	1.4500	343.007
1.4600	342.911	1.4700	344.716	1.4700Temp	134.1	1.4800	341.562	1.4900	342.184
1.5000	345.441	1.5100	330.572	1.5200	328.915	1.5300	328.919	1.5400	330.166
1.5500	330.125	1.5600	329.951	1.5700	344.305	1.5700Temp	134.1	1.5800	344.457
1.5900	344.641	2.0000	345.392	2.0100	344.248	2.0200	343.193	2.0300	336.791
2.0400	336.909	2.0500	337.220	2.0600	336.806	2.0700	345.292	2.0700Temp	134.1
2.0800	341.721	2.0900	341.773	2.1000	345.188	2.1100	349.379	2.1200	347.147
2.1300	451.735	2.1400	451.652	2.1500	445.962	2.1600	451.704	2.1700	451.802
2.1700Temp	134.1	2.1800	451.553	2.1900	443.200	2.2000	451.593	2.2100	451.606
2.2200	451.697	2.2300	451.346	2.2400	451.602	2.2500	451.580	2.2600	444.616

FILE

22

2.2700	451.649	2.2700Temp	134.1	2.2800	451.518	2.2900	425.072	2.3000	424.961
2.3100	424.864	2.3200	425.174	2.3300	425.062	2.3400	424.737	2.3500	421.755
2.3600	421.849	2.3700	421.823	2.3700Temp	134.1	2.3800	424.939	2.3900	421.745
2.4000	421.495	2.4100	421.813	2.4200	424.968	2.4300	424.942	2.4400	421.784
2.4500	398.457	2.4600	398.574	2.4700	395.252	2.4700Temp	134.1	2.4800	398.551
2.4900	398.567	2.5000	395.152	2.5100	395.226	2.5200	398.414	2.5300	395.203
2.5400	395.255	2.5500	398.499	2.5600	395.245	2.5700	395.239	2.5700Temp	134.1
2.5800	372.018	2.5900	371.880	3.0000	372.018	3.0100	371.856	3.0200	372.012
3.0300	372.004	3.0400	368.581	3.0500	368.698	3.0600	368.542	3.0700	368.698
3.0700Temp	134.1	3.0800	368.688	3.0900	368.617	3.1000	368.687	3.1100	371.602

FILE

23

3.1200	375.125	3.1300	450.967	3.1400	450.969	3.1500	446.553	3.1600	450.877
3.1700	450.913	3.1700Temp	134.1	3.1800	447.409	3.1900	438.469	3.2000	438.430
3.2100	438.484	3.2200	451.396	3.2300	449.675	3.2400	443.067	3.2500	445.151
3.2600	445.130	3.2700	443.481	3.2700Temp	134.1	3.2800	451.393	3.2900	448.481
3.3000	448.468	3.3100	416.826	3.3200	418.107	3.3300	416.029	3.3400	420.933
3.3500	411.558	3.3600	410.997	3.3700	411.026	3.3700Temp	134.1	3.3800	411.245
3.3900	411.456	3.4000	411.034	3.4100	416.858	3.4200	416.834	3.4300	417.996
3.4400	451.398	3.4500	451.267	3.4600	451.757	3.4700	450.097	3.4700Temp	134.1
3.4800	443.434	3.4900	451.800	3.5000	451.606	3.5100	446.274	3.5200	438.436
3.5300	438.272	3.5400	437.840	3.5500	438.412	3.5600	438.074	3.5700	438.059

24

3.5700Temp 134.1
4.0200 450.929
4.0700 443.427
4.1100 448.461
4.1600 903.807
4.2000 910.715
4.2500 903.752
4.2900 908.371
4.3400 931.260
4.3800 931.125
3.5800 433.051
4.0300 442.951
4.0700Temp 134.1
4.1200 448.053
4.1700 910.720
4.2100 909.585
4.2600 903.809
4.3000 906.995
4.3500 930.912
4.3900 931.012
3.5900 438.490
4.0400 442.939
4.0800 449.496
4.1300 903.846
4.1700Temp 134.1
4.2200 903.893
4.2700 908.091
4.3100 906.717
4.3600 930.925
4.4000 931.203
4.4500 931.260
4.4900 930.398
4.5400 937.139
4.5800 958.065
5.0200 958.636
5.0700 963.735
5.1100 955.004
5.1600 955.216
5.2000 962.069
5.2500 982.554

FILE

25

4.4300 937.995
4.4700Temp 134.1
4.5200 937.221
4.5700 957.961
5.0100 956.922
5.0600 963.671
5.1000 963.354
5.1500 955.004
5.1900 961.893
5.2400 982.422
4.4400 937.133
4.4800 930.241
4.5300 937.166
4.5700Temp 134.1
5.0200 958.636
5.0700 963.735
5.1100 955.004
5.1600 955.216
5.2000 962.069
5.2500 982.554
4.4600 930.351
4.5000 930.231
4.5500 937.179
4.5900 957.894
5.0400 958.623
5.0800 963.675
5.1300 958.434
5.1700Temp 134.1
5.2200 961.855
5.2700 986.031

FILE

26

5.2800 985.850
5.3300 991.145
5.3700Temp 134.1
5.4200 992.768
5.4700 991.199
5.5100 826.162
5.5600 1005.801
6.0000 1016.737
6.0500 1013.526
6.0900 1019.648
5.2900 986.009
5.3400 991.142
5.3800 982.408
5.4300 992.754
5.4700Temp 134.1
5.5200 1003.117
5.5700 1006.569
6.0100 1016.320
6.0600 879.788
6.1000 585.554
5.3000 985.876
5.3500 991.167
5.3900 982.637
5.4400 992.712
5.4800 992.441
5.5300 1005.573
5.5700Temp 134.1
6.0200 1016.742
6.0700 849.241
6.1100 585.156
5.3100 985.874
5.3600 984.135
5.4000 992.728
5.4500 992.901
5.4900 992.865
5.5400 1005.363
5.5800 1004.726
6.0300 1016.750
6.0800Temp 134.1
6.1200 581.722

FILE

27

6.1400 585.490
6.1800 1027.128
6.2300 1030.712
6.2700Temp 134.1
6.3200 1037.536
6.3700 1047.045
6.4100 1052.183
6.4600 621.225
6.5000 625.787
6.5500 631.071
6.1500 612.426
6.1900 1025.556
6.2400 1030.714
6.2800 1036.430
6.3300 1041.030
6.3700Temp 134.1
6.4200 1052.183
6.4700 635.543
6.5100 625.991
6.5600 631.047
6.1600 855.678
6.2000 1027.222
6.2500 879.979
6.2900 1036.559
6.3400 1041.623
6.3800 883.364
6.4300 1051.373
6.4700Temp 134.1
6.5200 625.541
6.5700 634.802
6.1700 1029.854
6.2100 1036.107
6.2600 1035.872
6.3000 1036.188
6.3500 1041.022
6.3900 1046.521
6.4400 621.633
6.4800 625.956
6.5300 626.002
6.5700Temp 134.1

FILE

28

6.5900 635.926
7.0400 641.527
7.0800 647.693
7.1300 652.421
7.1700Temp 134.1
7.2200 672.054
7.2700 663.286
7.3100 662.581
7.3600 685.297
7.4000 679.175
7.0100 642.960
7.0600 647.722
7.1000 652.325
7.1500 657.847
7.1900 657.487
7.2400 662.591
7.2800 662.790
7.3300 667.612
7.3700Temp 134.1
7.4200 678.423
7.0200 641.356
7.0700Temp 134.1
7.1100 652.263
7.1600 657.816
7.2000 657.862
7.2500 662.904
7.2900 663.014
7.3400 667.591
7.3800 673.266
7.4300 691.073
6.1700Temp 134.1
6.2200 1030.712
6.2700 1036.299
6.3100 1036.547
6.3600 1055.603
6.4000 883.221
6.4500 621.174
6.4900 626.051
6.5400 633.283
6.5800 635.724
7.0300 641.598
7.0700Temp 134.1
7.1200 652.218
7.1700 658.236
7.2100 656.950
7.2600 662.985
7.3000 662.925
7.3500 667.883
7.3900 679.187
7.4400 689.592

29

7.4500	682.771	7.4600	682.996	7.4700	686.811	7.4700Temp 134.1	7.4800	686.631
7.4900	686.614	7.5000	686.682	7.5100	686.257	7.5200	687.053	
7.5400	686.616	7.5500	686.276	7.5600	686.819	7.5700	687.255	
7.5800	687.244	7.5900	687.394	8.0000	689.430	8.0100	689.619	
8.0300	688.594	8.0400	689.180	8.0500	695.476	8.0600	694.063	
8.0700Temp 134.1		8.0800	694.963	8.0900	698.855	8.1000	699.004	
8.1200	707.321	8.1300	703.544	8.1400	703.238	8.1500	704.075	
8.1700	711.760	8.1700Temp 134.1		8.1800	709.046	8.1900	708.969	
8.2100	710.876	8.2200	711.169	8.2300	710.738	8.2400	710.336	
8.2600	716.739	8.2700	714.332	8.2700Temp 134.1		8.2800	715.169	

FILE

30

8.3000	715.550	8.3100	714.378	8.3200	714.634	8.3300	712.371
8.3500	715.396	8.3600	715.301	8.3700	715.369	8.3700Temp 134.1	
8.3900	713.898	8.4000	715.078	8.4100	713.867	8.4200	714.586
8.4400	714.241	8.4500	712.965	8.4600	713.122	8.4700	712.125
8.4800	475.319	8.4900	711.430	8.5000	711.524	8.5100	708.072
8.5300	709.679	8.5400	709.613	8.5500	707.979	8.5600	704.047
8.5700Temp 134.1		8.5800	704.412	8.5900	699.932	9.0000	699.606
9.0200	699.215	9.0300	693.649	9.0400	693.911	9.0500	693.837
9.0700	688.680	9.0700Temp 134.1		9.0800	688.571	9.0900	688.516
9.1100	686.647	9.1200	686.977	9.1300	686.954	9.1400	686.662

FILE

31

9.1600	685.932	9.1700	686.637	9.1700Temp 134.1		9.1800	686.178
9.2000	686.161	9.2100	685.787	9.2200	685.685	9.2300	685.482
9.2500	685.673	9.2600	685.431	9.2700	685.584	9.2700Temp 134.1	
9.2900	684.835	9.3000	685.175	9.3100	685.645	9.3200	685.937
9.3400	686.446	9.3500	686.417	9.3600	686.837	9.3700	686.393
9.3800	686.860	9.3900	688.652	9.4000	687.364	9.4100	687.300
9.4300	686.888	9.4400	687.506	9.4500	687.437	9.4600	687.414
9.4700Temp 134.1		9.4800	687.417	9.4900	687.477	9.5000	687.516
9.5200	686.921	9.5300	687.531	9.5400	687.565	9.5500	687.671
9.5700	688.236	9.5700Temp 134.1		9.5800	688.546	9.5900	688.756

FILE

32

10.0100	688.953	10.0200	688.457	10.0300	688.620	10.0400	688.629
10.0600	688.963	10.0700	689.214	10.0700Temp 134.1		10.0800	689.072
10.1000	688.370	10.1100	686.868	10.1200	688.741	10.1300	688.581
10.1500	688.271	10.1600	687.874	10.1700	688.225	10.1700Temp 134.1	
10.1900	688.106	10.2000	687.778	10.2100	688.338	10.2200	688.174
10.2400	687.704	10.2500	688.383	10.2600	687.892	10.2700	689.412
10.2800	688.780	10.2900	688.711	10.3000	688.221	10.3100	690.356
10.3300	691.037	10.3400	696.223	10.3500	693.931	10.3600	693.595
10.3700Temp 134.1		10.3800	693.074	10.3900	699.775	10.4000	699.745
10.4200	697.282	10.4300	697.321	10.4400	700.444	10.4500	696.809

FILE

33

10.4700	699.222	10.4700Temp 134.1		10.4800	702.650	10.4900	702.588
10.5100	702.003	10.5200	701.955	10.5300	702.178	10.5400	702.151
10.5600	702.506	10.5700	702.637	10.5700Temp 134.1		10.5800	702.226
11.0000	702.196	11.0100	701.793	11.0200	702.279	11.0300	703.829
11.0500	703.296	11.0600	703.037	11.0700	703.054	11.0700Temp 134.1	
11.0900	703.641	11.1000	703.321	11.1100	703.218	11.1200	703.696
11.1400	703.527	11.1500	703.427	11.1600	703.702	11.1700	703.499
11.1800	703.445	11.1900	703.313	11.2000	703.303	11.2100	703.336
11.2300	705.278	11.2400	708.202	11.2500	708.296	11.2600	712.326
11.2700Temp 134.1		11.2800	708.638	11.2900	708.256	11.3000	711.462

34

11.3200	716.539	11.3300	714.461	11.3400	713.214	11.3500	713.824	11.3600	714.235
11.3700	714.107	11.3700Temp 134.1	714.080	11.3800	714.080	11.3900	713.624	11.4000	713.469
11.4100	713.665	713.576	714.173	11.4300	714.173	11.4400	713.850	11.4500	713.444
11.4600	714.127	11.4700Temp 134.1	714.428	11.4700Temp 134.1	714.428	11.4800	713.494	11.4900	713.579
11.5000	713.061	713.5100	713.653	11.5200	712.949	11.5300	714.140	11.5400	713.371
11.5500	714.076	11.5600	714.185	11.5700	713.665	11.5700Temp 134.1	713.399	11.5800	713.875
11.5900	713.908	12.0000	713.762	12.0100	713.838	12.0200	713.399	12.0300	713.143
12.0400	713.437	12.0500	713.411	12.0600	714.134	12.0700	713.786	12.0700Temp 134.1	713.143
12.0800	713.678	12.0900	713.411	12.1000	714.202	12.1100	713.680	12.1200	713.701
12.1300	713.791	12.1400	713.709	12.1500	713.918	12.1600	713.931	12.1700	713.378

FILE

35

12.1700Temp 134.1	713.205	12.1800	713.205	12.1900	713.934	12.2000	713.627	12.2100	713.420
12.2200	712.643	12.2300	714.009	12.2400	713.774	12.2500	713.251	12.2600	713.671
12.2700	713.386	12.2700Temp 134.1	713.929	12.2800	714.017	12.2900	714.193	12.3000	714.266
12.3100	714.167	12.3200	713.929	12.3300	719.934	12.3400	879.596	12.3500	881.717
12.3600	881.725	12.3700Temp 134.1	876.610	12.3700Temp 134.1	876.610	12.3800	714.375	12.3900	714.682
12.4000	714.619	12.4100	713.984	12.4200	714.507	12.4300	714.441	12.4400	714.634
12.4500	714.517	12.4600	714.249	12.4700	713.964	12.4700Temp 134.1	713.636	12.4800	714.591
12.4900	714.771	12.5000	713.528	12.5100	713.711	12.5200	713.636	12.5300	714.799
12.5400	713.328	12.5500	714.066	12.5600	713.460	12.5700	714.088	12.5700Temp 134.1	713.880
12.5800	713.864	12.5900	714.264	13.0000	714.654	13.0100	714.075	13.0200	713.880

FILE

36

13.0300	714.051	13.0400	714.111	13.0500	714.220	13.0600	714.190	13.0700	713.518
13.0700Temp 134.1	713.720	13.0800	713.622	13.0900	714.538	13.1000	713.115	13.1100	713.569
13.1200	714.633	13.1300	714.273	13.1400	713.960	13.1500	713.092	13.1600	713.271
13.1700	714.633	13.1700Temp 134.1	714.289	13.1800	713.502	13.1900	713.508	13.2000	713.358
13.2100	714.299	13.2200	713.485	13.2300	713.104	13.2400	714.122	13.2500	714.413
13.2600	713.349	13.2700Temp 134.1	713.922	13.2700Temp 134.1	713.922	13.2800	714.675	13.2900	714.279
13.3000	714.571	13.3100	714.302	13.3200	713.848	13.3300	713.848	13.3400	714.086
13.3500	714.466	13.3600	713.341	13.3700	713.596	13.3700Temp 134.1	713.483	13.3800	713.483
13.3900	715.735	13.4000	715.827	13.4100	717.848	13.4200	718.036	13.4300	714.080
13.4400	714.568	13.4500	713.196	13.4600	713.817	13.4700	713.685	13.4700Temp 134.1	713.880

FILE

37

13.4800	713.444	13.4900	714.410	13.5000	714.357	13.5100	714.042	13.5200	714.215
13.5300	713.827	13.5400	713.529	13.5500	713.067	13.5600	714.276	13.5700	714.621
13.5700Temp 134.1	713.533	13.5800	713.929	13.5900	713.627	14.0000	713.533	14.0100	714.164
14.0200	712.805	14.0300	713.105	14.0400	713.782	14.0500	714.730	14.0600	714.619
14.0700	714.262	14.0700Temp 134.1	713.657	14.0800	714.812	14.0900	714.429	14.1000	713.964
14.1100	714.262	14.1200	713.510	14.1300	714.046	14.1400	713.766	14.1500	712.950
14.1600	714.396	14.1700	713.939	14.1700Temp 134.1	713.939	14.1800	713.741	14.1900	714.396
14.2000	714.685	14.2100	713.856	14.2200	714.826	14.2300	712.905	14.2400	712.935
14.2500	712.782	14.2600	712.777	14.2700	712.728	14.2700Temp 134.1	712.891	14.2800	712.891
14.2900	714.284	14.3000	714.515	14.3100	714.050	14.3200	713.658	14.3300	713.780

FILE

38

14.3400	714.670	14.3500	713.495	14.3600	712.861	14.3700	713.847	14.3700Temp 134.1	713.847
14.3800	712.932	14.3900	714.066	14.4000	714.256	14.4100	713.884	14.4200	713.951
14.4300	714.692	14.4400	715.047	14.4500	714.348	14.4600	714.294	14.4700	713.224
14.4700Temp 134.1	713.766	14.4800	714.378	14.4900	712.980	14.5000	713.818	14.5100	713.259
14.5200	713.766	14.5300	713.510	14.5400	713.614	14.5500	714.459	14.5600	715.223
14.5700	715.157	14.5700Temp 134.1	714.167	14.5800	714.167	14.5900	714.550	15.0000	713.759
15.0100	713.600	15.0200	714.050	15.0300	713.439	15.0400	713.747	15.0500	715.030
15.0600	716.773	15.0700	713.134	15.0700Temp 134.1	713.439	15.0800	712.970	15.0900	714.218
15.1000	713.444	15.1100	713.314	15.1200	714.543	15.1300	713.061	15.1400	714.424
15.1500	714.094	15.1600	713.741	15.1700	713.251	15.1700Temp 134.1	713.971	15.1800	713.880

39

15.1900 714.710 714.469 714.707 15.2100 714.707 713.309 15.2300 714.058
 15.2400 713.531 713.546 714.616 15.2600 714.616 715.225 15.2700temp 134.1
 15.2800 714.649 714.076 713.292 15.3000 713.292 713.653 15.3200 714.449
 15.3300 713.533 713.786 713.406 15.3500 713.406 713.358 15.3700 713.964
 15.3700temp 134.1 15.3800 714.854 713.843 15.3900 713.843 715.254 15.4100 714.073
 15.4200 713.914 15.4300 714.862 15.4400 713.240 15.4500 713.611 15.4600 713.333
 15.4700 713.812 15.4700temp 134.1 15.4800 713.234 713.460 15.5000 713.039
 15.5100 714.462 15.5200 713.632 15.5300 714.375 15.5500 714.415
 15.5600 713.155 15.5700 714.099 15.5700temp 134.1 15.5900 714.768
 16.0000 713.406 16.0100 712.995 16.0200 714.759 16.0300 714.215

FILE

40

16.0500 713.192 713.094 712.952 16.0700 712.952 16.0700temp 134.1 713.477
 16.0900 713.271 713.700 713.355 16.1100 713.355 16.1200 714.530 714.685
 16.1400 712.754 714.324 714.075 16.1600 714.075 16.1700 713.276 16.1700temp 134.1
 16.1800 712.988 712.440 713.265 16.2000 713.265 16.2100 714.966 16.2200 714.921
 16.2300 713.538 714.366 713.341 16.2500 713.341 16.2600 714.429 16.2700 713.335
 16.2700temp 134.1 16.2800 712.750 712.866 16.2900 712.866 16.3000 713.647 16.3100 713.109
 16.3200 713.873 16.3300 713.192 16.3400 714.164 16.3500 713.871 16.3600 713.871
 16.3700 713.720 16.3700temp 134.1 16.3800 713.578 16.3900 713.247 16.4000 713.132
 16.4100 712.958 16.4200 712.615 16.4300 713.434 16.4400 712.836 16.4500 714.883
 16.4600 713.718 16.4700 713.063 16.4700temp 134.1 16.4800 712.943 16.4900 713.815

FILE

41

16.5000 713.977 707.778 708.403 16.5200 708.403 709.656 712.132
 16.5500 712.599 712.554 711.965 16.5700 711.965 16.5700temp 134.1 711.688
 16.5900 711.689 711.456 711.361 17.0100 711.361 17.0200 712.975 712.763
 17.0400 712.023 712.075 711.889 17.0600 711.889 17.0700 711.070 17.0700temp 134.1
 17.0800 712.015 711.862 712.736 17.1000 712.736 17.1100 712.427 712.120
 17.1300 711.602 712.179 712.863 17.1500 712.863 17.1600 711.760 711.303
 17.1700temp 134.1 17.1800 712.268 712.237 712.2000 711.889 712.100 711.962
 17.2200 711.078 17.2300 711.202 712.836 712.500 711.917 712.100 712.112
 17.2700 711.790 17.2700temp 134.1 711.841 711.589 711.3000 711.181
 17.3100 712.955 17.3200 711.611 17.3300 712.312 17.3400 711.996

FILE

42

17.3600 711.065 712.491 17.3700temp 134.1 17.3700temp 134.1 711.633 711.044
 17.4000 712.452 719.098 17.4100 716.285 17.4200 716.285 17.4300 713.676 713.307
 17.4500 713.490 713.612 714.210 714.210 714.210 17.4700temp 134.1 17.4800 717.099
 17.4900 713.567 714.010 713.736 17.5100 713.736 17.5200 713.887 714.002
 17.5400 713.423 712.802 713.224 17.5600 713.224 17.5700 713.010 17.5700temp 134.1
 17.5800 712.739 712.530 712.359 18.0000 713.140 18.0100 713.140 18.0200 712.887
 18.0300 712.681 18.0400 712.569 18.0500 713.536 18.0600 714.048 714.936
 18.0700temp 134.1 18.0800 713.531 18.0900 713.396 18.1000 712.526 18.1100 714.936
 18.1200 713.298 18.1300 714.184 18.1400 713.959 18.1500 714.215 715.801
 18.1700 716.232 18.1700temp 134.1 18.1800 714.862 18.1900 715.787 18.2000 715.247

FILE

43

18.2100 715.575 714.026 18.2200 714.026 18.2300 714.373 714.502 714.487
 18.2600 713.969 713.791 18.2700temp 134.1 18.2800 714.195 18.2900 714.525
 18.3000 713.789 713.424 18.3200 713.838 18.3300 713.878 18.3400 713.977
 18.3500 713.764 713.988 18.3700temp 134.1 18.3800 715.538 18.3900 715.538
 18.3900 713.221 18.4000 713.456 18.4100 714.695 18.4200 714.685 18.4300 714.139
 18.4400 713.482 18.4500 712.536 18.4600 714.598 18.4700 713.952 18.4700temp 134.1
 18.4800 713.633 18.4900 714.557 18.5000 713.676 18.5100 712.850 712.850
 18.5300 713.474 18.5400 713.673 18.5500 713.616 18.5600 716.037 715.814
 18.5700temp 134.1 18.5800 715.814 19.0000 713.007 716.094 716.094
 19.0200 718.684 19.0300 714.454 19.0400 712.883 19.0500 713.298

19.0700 716.879 19.0700Temp 134.1 19.0800 715.261 19.0900 716.242 19.1000 715.291
 19.1100 714.553 19.1200 714.379 19.1300 714.213 19.1400 714.408 19.1500 709.626
 19.1600 712.095 19.1700Temp 134.1 19.1800 713.005 19.1900 713.602
 19.2000 713.172 19.2100 713.167 19.2200 711.349 19.2300 716.453 19.2400 716.344
 19.2500 715.048 19.2600 714.345 19.2700 714.688 19.2800 714.390
 19.2900 714.238 19.3000 714.492 19.3100 715.309 19.3200 713.799 19.3300 714.879
 19.3400 713.619 19.3500 713.340 19.3600 713.931 19.3700 713.600 19.3700Temp 134.1
 19.3800 713.649 19.3900 708.375 19.4000 713.081 19.4100 712.600 19.4200 714.713
 19.4300 712.876 19.4400 713.921 19.4500 713.734 19.4600 712.887 19.4700 712.696
 19.4700Temp 134.1 19.4800 712.461 19.4900 714.097 19.5000 713.515 19.5100 713.880

FILE 45

19.5200 713.480 19.5300 713.315 19.5400 717.270 19.5500 716.107 19.5600 715.293
 19.5700 713.929 19.5700Temp 134.1 19.5800 713.726 19.5900 714.068 20.0000 714.393
 20.0100 714.829 20.0200 713.109 20.0300 713.716 20.0400 713.535 20.0500 712.105
 20.0600 712.742 20.0700 712.192 20.0700Temp 134.1 20.0800 712.673 20.0900 712.077
 20.1000 711.795 20.1100 712.987 20.1200 713.094 20.1300 712.810 20.1400 712.657
 20.1500 711.802 20.1600 711.618 20.1700 712.381 20.1700Temp 134.1 20.1800 712.485
 20.1900 712.823 20.2000 712.455 20.2100 712.524 20.2200 712.323 20.2300 712.647
 20.2400 712.919 20.2500 712.678 20.2600 714.153 20.2700 712.652 20.2700Temp 134.1
 20.2800 713.969 20.2900 713.545 20.3000 713.569 20.3100 714.101 20.3200 713.789
 20.3300 713.855 20.3400 713.314 20.3500 713.094 20.3600 712.856 20.3700 712.685

FILE 46

20.3700Temp 134.1 20.3800 712.759 20.3900 711.990 20.4000 712.295 20.4100 712.008
 20.4200 711.862 20.4300 711.748 20.4400 711.651 20.4500 711.569 20.4600 711.538
 20.4700 711.836 20.4700Temp 134.1 20.4800 713.670 20.4900 713.942 20.5000 713.206
 20.5100 713.104 20.5200 712.887 20.5300 713.675 20.5400 713.028 20.5500 713.156
 20.5600 712.853 20.5700 712.590 20.5700Temp 134.1 20.5800 712.397 20.5900 712.850
 21.0000 712.878 21.0100 712.874 21.0200 708.669 21.0300 713.158 21.0400 718.620
 21.0500 717.703 21.0600 716.316 21.0700 715.808 21.0700Temp 134.1 21.0800 716.371
 21.0900 716.709 21.1000 715.197 21.1100 715.165 21.1200 715.164 21.1300 715.182
 21.1400 715.223 21.1500 715.279 21.1600 715.319 21.1700 715.382 21.1700Temp 134.1
 21.1800 715.443 21.1900 715.503 21.2000 715.570 21.2100 715.745 21.2200 715.402

FILE 47

21.2300 715.004 21.2400 714.617 21.2500 714.238 21.2600 713.867 21.2700 713.503
 21.2700Temp 134.1 21.2800 713.143 21.2900 712.790 21.3000 712.445 21.3100 712.120
 21.3200 711.775 21.3300 711.442 21.3400 711.128 21.3500 710.811 21.3600 710.530
 21.3700 710.227 21.3700Temp 134.1 21.3800 709.964 21.3900 709.681 21.4000 709.433
 21.4100 709.184 21.4200 708.940 21.4300 708.700 21.4400 708.459 21.4500 708.223
 21.4600 707.983 21.4700 707.746 21.4700Temp 134.1 21.4800 707.507 21.4900 707.275
 21.5000 706.857 21.5100 706.646 21.5200 706.424 21.5300 706.177 21.5400 705.967
 21.5500 705.758 21.5600 705.472 21.5700 705.131 21.5700Temp 134.1 21.5800 704.829
 21.5900 704.636 22.0000 704.453 22.0100 704.263 22.0200 704.058 22.0300 703.852
 22.0400 703.649 22.0500 703.445 22.0600 703.238 22.0700 703.036 22.0700Temp 134.1

FILE 48

22.0800 702.836 22.0900 702.640 22.1000 702.423 22.1100 702.080 22.1200 701.811
 22.1300 701.651 22.1400 701.488 22.1500 701.292 22.1600 700.990 22.1700 700.665
 22.1700Temp 134.1 22.1800 700.381 22.1900 700.136 22.2000 699.915 22.2100 699.708
 22.2200 699.510 22.2300 699.319 22.2400 699.131 22.2500 698.944 22.2600 698.762
 22.2700 698.580 22.2700Temp 134.1 22.2800 698.402 22.2900 698.224 22.3000 698.049
 22.3100 697.876 22.3200 697.704 22.3300 697.534 22.3400 697.368 22.3500 697.201
 22.3600 697.036 22.3700 696.875 22.3700Temp 134.1 22.3800 696.715 22.3900 696.555
 22.4000 696.398 22.4100 696.242 22.4200 696.088 22.4300 695.936 22.4400 695.765
 22.4500 695.636 22.4600 695.487 22.4700 695.341 22.4700Temp 134.1 22.4800 695.196
 22.4900 695.052 22.5000 694.910 22.5100 694.770 22.5200 694.630 22.5300 694.493

22.5400 694.357
22.5800 693.824
23.0300 693.186
23.0700Temp 134.1
23.1200 692.115
23.1700 691.560
23.2100 691.133
23.2600 690.622
23.3000 690.250
23.3500 689.759
22.5700Temp 134.1
23.0200 693.311
23.0700 692.829
23.1100 692.229
23.1600 691.609
23.2000 691.238
23.2500 690.723
23.3000 689.852
23.3800 689.489

FILE

50
23.3900 689.400
23.4400 688.970
23.4800 688.642
23.5300 688.246
23.5700Temp 134.1
0.0200 687.594
0.0700 687.261
0.1100 687.010
0.1600 686.715
0.1700 686.659
23.4300 689.054
23.4700Temp 134.1
23.5200 688.524
23.5700 687.948
0.0100 687.663
0.0600 687.325
0.1000 687.071
0.1500 686.771
0.1700 686.659
0.2400 686.295

FILE

51
0.2500 686.245
0.2900 686.056
0.3400 685.835
0.3800 685.663
0.4300 685.454
0.4700Temp 134.1
0.5200 685.103
0.5700 684.953
1.0100 684.837
1.0600 684.688
0.2700Temp 134.1
0.3200 685.922
0.3700 685.706
0.4100 685.536
0.4600 685.334
0.5000 685.179
0.5500 685.008
0.5900 684.895
1.0400 684.748
1.0800 684.630

FILE

52
1.1000 684.570
1.1500 684.427
1.1900 684.315
1.2400 684.183
1.2800 684.080
1.3300 683.955
1.3700Temp 134.1
1.4200 683.747
1.4700 683.638
1.5100 683.554
1.1300 684.483
1.1700Temp 134.1
1.2200 684.234
1.2700Temp 134.1
1.3200 683.979
1.3700 683.860
1.4100 683.769
1.4600 683.659
1.5000 683.575
1.5500 683.471

FILE

53
1.5600 683.451
2.0000 683.374
2.0500 683.280
2.0900 683.207
2.1400 683.121
2.1800 683.056
2.2300 682.977
2.2700Temp 134.1
2.3200 682.839
2.3700 682.766
1.5700Temp 134.1
2.0200 683.336
2.0700 683.244
2.1100 683.173
2.1600 683.087
2.2000 683.025
2.2500 682.945
2.2900 682.899
2.3300 682.823
2.3800 682.753

54

2.4100	682.712	2.4200	682.699	2.4300	682.683	2.4400	682.670	2.4500	682.657
2.4600	682.644	2.4700	682.632	2.4700Temp 134.1		2.4800	682.619	2.4900	682.606
2.5000	682.594	2.5100	682.581	2.5200	682.570	2.5300	682.557	2.5400	682.545
2.5500	682.534	2.5600	682.521	2.5700	682.509	2.5700Temp 134.1		2.5800	682.497
2.5900	682.486	3.0100	682.474	3.0100	682.463	3.0200	682.451	3.0300	682.439
3.0400	682.428	3.0500	682.417	3.0600	682.405	3.0700	682.395	3.0700Temp 134.1	
3.0800	682.383	3.0900	682.372	3.1000	682.362	3.1100	682.352	3.1200	682.341
3.1300	682.331	3.1400	682.319	3.1500	682.310	3.1600	682.298	3.1700	682.288
3.1700Temp 134.1		3.1800	682.278	3.1900	682.266	3.2000	682.257	3.2100	682.247
3.2200	682.237	3.2300	682.227	3.2400	682.217	3.2500	682.207	3.2600	682.197

FILE

55

3.2700	682.188	3.2700Temp 134.1		3.2800	682.177	3.2900	682.169	3.3000	682.159
3.3100	682.150	3.3200	682.141	3.3300	682.131	3.3400	682.121	3.3500	682.113
3.3600	682.104	3.3700	682.093	3.3700Temp 134.1		3.3800	682.086	3.3900	682.075
3.4000	682.067	3.4100	682.057	3.4200	682.049	3.4300	682.039	3.4400	682.031
3.4500	682.023	3.4600	682.015	3.4700	682.006	3.4700Temp 134.1		3.4800	681.998
3.4900	681.990	3.5000	681.982	3.5100	681.973	3.5200	681.965	3.5300	681.957
3.5400	681.948	3.5500	681.940	3.5600	681.932	3.5700	681.926	3.5700Temp 134.1	
3.5800	681.917	3.5900	681.909	4.0000	681.902	4.0100	681.894	4.0200	681.886
4.0300	681.877	4.0400	681.871	4.0500	681.863	4.0600	681.856	4.0700	681.848
4.0700Temp 134.1		4.0800	681.842	4.0900	681.835	4.1000	681.826	4.1100	681.820

FILE

56

4.1200	681.813	4.1300	681.807	4.1400	681.800	4.1500	681.793	4.1600	681.786
4.1700	681.779	4.1700Temp 134.1		4.1800	681.774	4.1900	681.767	4.2000	681.759
4.2100	681.753	4.2200	681.746	4.2300	681.740	4.2400	681.734	4.2500	681.728
4.2600	681.721	4.2700	681.715	4.2700Temp 134.1		4.2800	681.708	4.2900	681.703
4.3000	681.696	4.3100	681.690	4.3200	681.683	4.3300	681.678	4.3400	681.672
4.3500	681.665	4.3600	681.660	4.3700	681.653	4.3700Temp 134.1		4.3800	681.647
4.3900	681.640	4.4000	681.635	4.4100	681.629	4.4200	681.624	4.4300	681.617
4.4400	681.613	4.4500	681.606	4.4600	681.601	4.4700	681.594	4.4700Temp 134.1	
4.4800	681.589	4.4900	681.583	4.5000	681.577	4.5100	681.571	4.5200	681.566
4.5300	681.560	4.5400	681.555	4.5500	681.550	4.5600	681.543	4.5700	681.538

FILE

57

4.5700Temp 134.1		4.5800	681.533	4.5900	681.529	5.0100	681.518	5.0600	681.493
5.0200	681.513	5.0300	681.509	5.0400	681.504	5.0500	681.499	5.1000	681.474
5.0700	681.489	5.0700Temp 134.1		5.0800	681.484	5.0900	681.479	5.1500	681.451
5.1100	681.469	5.1200	681.464	5.1300	681.459	5.1400	681.456	5.1900	681.433
5.1600	681.446	5.1700	681.441	5.1700Temp 134.1		5.1800	681.438	5.2400	681.413
5.2000	681.429	5.2100	681.424	5.2200	681.421	5.2300	681.416	5.2800	681.398
5.2500	681.410	5.2600	681.404	5.2700	681.402	5.2700Temp 134.1		5.3300	681.378
5.2900	681.393	5.3000	681.390	5.3100	681.387	5.3200	681.382	5.3700Temp 134.1	
5.3400	681.375	5.3500	681.372	5.3600	681.367	5.3700	681.364	5.4200	681.345
5.3600	681.360	5.3900	681.357	5.4000	681.352	5.4100	681.349		

FILE

58

5.4300	681.340	5.4400	681.339	5.4500	681.334	5.4700	681.327		
5.4700Temp 134.1		5.4800	681.324	5.4900	681.321	5.5000	681.318	5.5100	681.313
5.5200	681.309	5.5300	681.306	5.5400	681.304	5.5500	681.299	5.5600	681.298
5.5700	681.293	6.0000Temp 13.4		5.5800	681.355	5.5900	681.352	6.0000	681.349
6.0100	681.346	6.0200	681.340	6.0300	681.339	6.0400	681.335	6.0500	681.332
6.0600	681.329	6.0700	681.326	6.0700Temp 134.6		6.0800	681.324	6.0900	681.319
6.1000	681.315	6.1100	681.313	6.1200	681.309	6.1300	681.308	6.1400	681.304
6.1500	681.301	6.1600	681.300	6.1700	681.296	6.1700Temp 134.6		6.1800	681.293
6.1900	681.289	6.2000	681.286	6.2100	681.283	6.2200	681.281	6.2300	681.276
6.2400	681.275	6.2500	681.271	6.2600	681.268	6.2700	681.267	6.2700Temp 134.6	

59

6.2800 681.263 6.2900 681.262 6.3000 681.258 6.3100 681.255 6.3200 681.253
 6.3300 681.250 6.3400 681.247 6.3500 681.243 6.3600 681.242 6.3700 681.238
 6.3700Temp 134.6 6.3800 681.237 6.3900 681.233 6.4000 681.230 6.4100 681.229
 6.4200 681.225 6.4300 681.224 6.4400 681.220 6.4500 681.218 6.4600 681.216
 6.4700 681.213 6.4700Temp 134.6 6.4800 681.212 6.4900 681.206 6.5000 681.204
 6.5100 681.369 6.5200 681.367 6.5300 681.364 6.5400 681.359 6.5500 681.352
 6.5600 681.347 6.5700 681.340 6.5700Temp 134.6 6.5800 681.338 6.5900 681.332
 7.0000 681.327 7.0100 681.324 7.0200 681.319 7.0300 681.315 7.0400 681.311
 7.0500 681.308 7.0600 681.306 7.0700Temp 134.6 7.0800 681.309 7.0900 681.311
 7.1000 681.313 7.1100 681.313 7.1200 681.311 7.1300 681.311

FILE

7.1400 681.309 7.1500 681.306 7.1600 681.304 7.1700 681.301 7.1700Temp 134.6
 7.1800 681.300 7.1900 681.296 7.2000 681.293 7.2100 681.289 7.2200 681.286
 7.2300 681.283 7.2400 681.278 7.2500 681.275 7.2600 681.271 7.2700 681.268
 7.2700Temp 134.6 7.2800 681.264 7.2900 681.262 7.3000 681.258 7.3100 681.253
 7.3200 681.250 7.3300 681.247 7.3400 681.243 7.3500 681.238 7.3600 681.233
 7.3700 682.224 7.3700Temp 134.6 7.3800 673.822 7.3900 674.142 7.4000 674.280
 7.4100 674.393 7.4200 674.491 7.4300 674.567 7.4400 674.633 7.4500 674.048
 7.4600 627.820 7.4700 630.002 7.4700Temp 134.6 7.4800 674.633 7.4900 626.898
 7.5000 625.403 7.5100 624.761 7.5200 621.651 7.5300 609.613 7.5400 607.276
 7.5500 606.314 7.5600 604.244 7.5700Temp 134.6 7.5800 615.736

FILE

7.5900 619.030 8.0000 620.054 8.0100 620.301 8.0200 620.293 8.0300 620.224
 8.0400 620.022 8.0500 619.792 8.0600 619.537 8.0700Temp 134.6 8.0800 619.346
 8.0900 619.445 8.1000 619.460 8.1100 619.440 8.1200 619.346 8.1300 619.271
 8.1400 619.360 8.1500 619.376 8.1600 619.253 8.1700 619.271 8.1800 619.935
 8.1700Temp 138.6 8.1800 619.755 8.1900 619.827 8.2000 619.953 8.2100 619.935
 8.2200 619.921 8.2300 619.966 8.2400 620.050 8.2500 620.161 8.2600 620.310
 8.2700 620.381 8.2700Temp 139.1 8.2800 620.531 8.2900 620.557 8.3000 620.621
 8.3100 620.733 8.3200 620.836 8.3300 620.884 8.3400 620.894 8.3500 620.945
 8.3600 620.993 8.3700Temp 139.1 8.3700Temp 139.1 8.3800 621.067 8.3900 621.091
 8.4000 621.170 8.4100 621.188 8.4200 621.252 8.4300 621.300 8.4400 621.318

FILE

8.4500 621.284 8.4600 621.461 8.4700 621.458 8.4700Temp 140.1 8.4800 621.466
 8.4900 621.443 8.5000 621.440 8.5100 621.564 8.5200 621.651 8.5300 621.628
 8.5400 621.673 8.5500 621.873 8.5600 622.081 8.5700Temp 140.1 8.5700Temp 140.1
 8.5800 622.103 8.5900 622.101 8.6000 622.098 9.0000 622.088 9.0100 622.047
 9.0300 622.052 9.0400 622.081 9.0500 622.081 9.0600 622.104 9.0700 622.325
 9.0700Temp 140.6 9.0800 622.899 9.0900 622.941 9.1000 623.015 9.1100 623.061
 9.1200 623.117 9.1300 623.214 9.1400 623.260 9.1500 623.298 9.1600 623.389
 9.1700 623.389 9.1700Temp 140.6 9.1800 623.478 9.1900 623.569 9.2000 623.643
 9.2100 623.704 9.2200 623.709 9.2300 623.770 9.2400 623.852 9.2500 623.871
 9.2600 623.873 9.2700 623.913 9.2700Temp 140.6 9.2800 623.995 9.2900 624.071

FILE

9.3000 624.056 9.3100 624.073 9.3200 624.206 9.3300 624.325 9.3400 624.242
 9.3500 624.260 9.3600 624.272 9.3700Temp 141.1 9.3700Temp 141.1 9.3800 624.343
 9.3900 624.292 9.4000 624.271 9.4100 624.335 9.4200 624.371 9.4300 624.366
 9.4400 624.355 9.4500 624.384 9.4600 624.428 9.4700Temp 141.1 9.4700Temp 141.1
 9.4800 624.317 9.4900 624.401 9.5000 624.422 9.5100 625.144 9.5200 625.270
 9.5300 625.302 9.5400 625.372 9.5500 625.412 9.5600 625.409 9.5700 625.312
 9.5700Temp 141.1 9.5800 625.303 10.0100 625.361 10.0100 625.360
 10.0200 625.412 10.0300 625.525 10.0400 625.570 10.0500 625.621 10.0600 625.670
 10.0700 625.772 10.0700Temp 141.1 10.0800 625.931 10.0900 626.004 10.1000 626.050
 10.1100 626.113 10.1200 626.187 10.1300 626.153 10.1400 626.073 10.1500 626.113

64

10.1600 626.285
10.2000 626.091
10.2500 626.188
10.2900 626.300
10.3400 626.288
10.3800 626.451
10.4300 626.382
10.4700Temp 141.6
10.5200 626.631
10.5700 626.617

10.1700 626.302
10.2100 626.114
10.2600 626.171
10.3000 626.362
10.3500 626.328
10.3900 626.387
10.4400 626.400
10.4800 626.602
10.5300 626.632
10.5700Temp 141.6

10.1700Temp 141.6
10.2200 626.167
10.2700 626.219
10.3100 626.431
10.3600 626.372
10.4000 626.400
10.4500 626.461
10.4900 626.535
10.5400 626.617
10.5800 626.721

10.1800 626.247
10.2300 626.196
10.2700Temp 141.6
10.3200 626.417
10.3700 626.492
10.4100 626.444
10.4600 626.580
10.5100 626.561
10.5600 626.604
11.0000 626.816

FILE 65

11.0100 626.768
11.0600 626.721
11.1000 626.841
11.1500 626.981
11.1900 627.008
11.2400 627.063
11.2800 627.010
11.3300 627.362
11.3700Temp 142.1
11.4200 627.343

11.0200 626.767
11.0700 626.775
11.1100 626.854
11.1600 626.968
11.2000 627.004
11.2500 627.030
11.2900 627.024
11.3400 627.352
11.3800 627.244
11.4300 627.355

11.0300 626.708
11.0700Temp 141.6
11.1200 626.874
11.1700 626.977
11.2100 626.994
11.2600 627.046
11.3000 627.119
11.3500 627.257
11.3900 627.287
11.4400 627.315

11.0400 626.691
11.0800 626.806
11.1300 626.861
11.1700Temp 141.6
11.2200 626.990
11.2700 627.066
11.3100 627.173
11.3600 627.221
11.4000 627.341
11.4500 627.344

FILE 66

11.4700 627.510
11.5100 627.560
11.5600 627.599
12.0000 627.706
12.0500 627.652
12.0900 627.675
12.1400 627.874
12.1800 627.681
12.2300 627.836
12.2700Temp 142.1

11.4700Temp 142.1
11.5200 627.591
11.5700 627.692
12.0100 627.706
12.0600 627.621
12.1000 627.660
12.1500 627.833
12.1900 627.803
12.2400 627.807
12.2800 628.032

11.4800 627.453
11.5300 627.570
11.5700Temp 142.1
12.0200 627.637
12.0700 627.632
12.1100 627.721
12.1600 627.681
12.2000 627.899
12.2500 627.927
12.2900 628.021

11.4900 627.458
11.5400 627.594
11.5800 627.757
12.0300 627.621
12.0700Temp 142.1
12.1200 627.833
12.1700 627.624
12.2100 627.850
12.2600 627.970
12.3000 628.025

FILE 67

12.3200 627.986
12.3700 628.113
12.4100 628.174
12.4600 628.187
12.5000 628.156
12.5500 628.154
12.5900 628.280
13.0400 630.145
13.0800 630.185
13.1300 630.210

12.3300 628.014
12.3700Temp 142.1
12.4200 628.129
12.4700 628.167
12.5100 628.137
12.5600 628.209
13.0000 628.260
13.0500 630.185
13.0900 630.202
13.1400 630.220

12.3400 628.032
12.3800 628.116
12.4300 628.083
12.4700Temp 142.1
12.5200 628.139
12.5700 628.312
13.0100 629.783
13.0600 630.185
13.1000 630.185
13.1500 630.219

12.3500 628.067
12.3900 628.193
12.4400 628.022
12.4900 628.178
12.5400 628.105
12.5700Temp 142.1
13.0200 629.916
13.0700 630.181
13.1100 630.188
13.1600 630.242

FILE 68

13.1700Temp 142.1
13.2200 630.339
13.2700 630.444
13.3100 630.579
13.3600 630.571
13.4000 630.532
13.4500 630.579
13.4900 630.613
13.5400 630.662
13.5800 630.780

13.1800 630.258
13.2300 630.411
13.2700Temp 142.1
13.3200 630.592
13.3700 630.545
13.4100 630.538
13.4600 630.551
13.5000 630.589
13.5500 630.695
13.5900 630.809

13.1900 630.308
13.2400 630.432
13.2800 630.436
13.3300 630.503
13.3700Temp 142.1
13.4200 630.572
13.4700 630.541
13.5100 630.547
13.5600 630.677
14.0000 630.779

13.2000 630.345
13.2500 630.390
13.2900 630.472
13.3400 630.462
13.3800 630.521
13.4300 630.584
13.4700Temp 142.6
13.5200 630.550
13.5700 630.726
14.0100 630.762

69

14.0300 630.760
14.0700Temp 142.6
14.1200 630.784
14.1700 630.709
14.2100 630.677
14.2600 630.581
14.3000 630.642
14.3500 630.703
14.3900 630.616
14.4400 630.705

14.0400 630.777
14.0800 630.734
14.1300 630.751
14.1700Temp 142.6
14.2200 630.631
14.2700 630.583
14.3100 630.650
14.3600 630.736
14.4000 630.623
14.4500 630.772

14.0500 630.780
14.0900 630.746
14.1400 630.575
14.1800 630.690
14.2300 630.664
14.2700Temp 142.6
14.3200 630.656
14.3700 630.743
14.4100 630.621
14.4600 630.809

14.0600 630.760
14.1000 630.751
14.1500 630.594
14.1900 630.692
14.2400 630.658
14.2800 630.588
14.3300 630.669
14.3700Temp 142.6
14.4200 630.611
14.4700 630.792

FILE

70

14.4800 630.765
14.5300 630.772
14.5700Temp 142.6
15.0200 630.943
15.0700 630.918
15.1100 630.963
15.1600 630.993
15.2000 631.006
15.2500 630.971
15.2900 631.054

14.4900 630.760
14.5400 630.776
14.5800 630.807
15.0300 630.942
15.0700Temp 142.6
15.1200 630.956
15.1700 630.994
15.2100 630.934
15.2600 630.978
15.3000 631.009

14.5000 630.764
14.5500 630.841
14.5900 630.838
15.0400 630.938
15.0800 630.947
15.1300 630.955
15.1700Temp 142.6
15.2200 630.917
15.2700 631.049
15.3100 631.047

14.5100 630.794
14.5600 630.849
15.0000 630.836
15.0500 630.938
15.0900 630.996
15.1400 630.943
15.1800 631.067
15.2300 630.951
15.2700Temp 142.6
15.3200 631.054

FILE

71

15.3400 631.100
15.3800 631.016
15.4300 630.930
15.4700Temp 142.6
15.5200 631.261
15.5700 631.169
16.0100 631.251
16.0600 631.154
16.1000 631.125
16.1500 609.209

15.3500 631.107
15.3900 631.013
15.4400 631.009
15.4800 631.126
15.5300 631.284
15.5700Temp 142.6
16.0200 631.227
16.0700 631.128
16.1100 631.182
16.1600 611.582

15.3600 631.120
15.4000 631.063
15.4500 631.091
15.4900 631.164
15.5400 631.256
15.5800 631.134
16.0300 631.223
16.0700Temp 142.6
16.1200 630.687
16.1700 611.913

15.3700Temp 142.6
15.4200 631.013
15.4700 631.121
15.5100 631.193
15.5600 631.207
16.0000 631.230
16.0500 631.136
16.0900 631.173
16.1400 611.236
16.1800 611.446

FILE

72

16.1900 611.246
16.2400 611.049
16.2800 614.909
16.3300 616.637
16.3700Temp 142.6
16.4200 616.778
16.4700 616.904
16.5100 616.913
16.5600 616.925
17.0000 616.953

16.2000 611.189
16.2500 610.995
16.2900 615.845
16.3400 616.686
16.3800 616.752
16.4300 616.811
16.4700Temp 142.6
16.5200 616.887
16.5700 616.935
17.0100 616.974

16.2100 611.264
16.2600 610.885
16.3000 616.277
16.3500 616.700
16.3900 616.785
16.4400 616.842
16.4800 616.897
16.5300 616.900
16.5700Temp 142.6
17.0200 617.012

16.2200 611.192
16.2700Temp 142.6
16.3100 616.466
16.3600 616.720
16.4000 616.797
16.4500 616.874
16.5000 616.915
16.5500 616.935
16.5900 616.949
17.0300 617.038

FILE

73

17.0500 617.048
17.0900 617.062
17.1400 617.094
17.1800 617.191
17.2300 617.209
17.2700Temp 142.6
17.3200 617.275
17.3700 617.337
17.4100 617.375
17.4600 617.413

17.0600 617.036
17.1000 617.063
17.1500 617.089
17.1900 617.203
17.2400 617.217
17.2800 617.244
17.3300 617.295
17.3700Temp 142.6
17.4200 617.392
17.4700 617.426

17.0700 617.025
17.1100 617.071
17.1600 617.114
17.2000 617.192
17.2500 617.221
17.2900 617.257
17.3400 617.319
17.3800 617.348
17.4300 617.403
17.4700Temp 142.6

17.0700Temp 142.6
17.1200 617.093
17.1700 617.158
17.2200 617.186
17.2700 617.230
17.3100 617.265
17.3600 617.316
17.4000 617.362
17.4500 617.405
17.4900 617.446

17.5000 617.472
17.5500 617.523
17.5900 617.546
18.0400 617.596
18.0800 617.706
18.1300 617.691
18.1700temp 143.0
18.2200 617.752
18.2700 617.768
18.3100 617.808
17.5100 617.469
17.5600 617.520
18.0000 617.553
18.0500 617.594
18.0900 617.686
18.1400 617.690
18.1800 617.742
18.2300 617.750
18.2700temp 143.0
18.3200 617.845
17.5200 617.481
17.5700 617.528
18.0100 617.563
18.0600 617.588
18.1000 617.666
18.1500 617.708
18.1900 617.747
18.2400 617.747
18.2800 617.785
18.3300 617.850
17.5300 617.487
17.5700temp 142.6
18.0200 617.578
18.0700temp 143.0
18.1200 617.685
18.1700 617.730
18.2100 617.754
18.2600 617.752
18.3000 617.776
18.3500 617.845

FILE

18.3600 617.832
18.4000 617.870
18.4500 617.890
18.4900 617.936
18.5400 617.963
18.5800 618.028
19.0300 618.032
19.0700temp 143.0
19.1200 618.110
19.1700 618.086
18.3700temp 143.0
18.4200 617.870
18.4700 617.930
18.5100 617.914
18.5600 617.974
19.0000 618.023
19.0500 618.048
19.0900 618.076
19.1400 618.121
19.1800 619.148
18.3800 617.862
18.4300 617.843
18.4700temp 143.0
18.5200 617.939
18.5700 617.998
19.0100 618.026
19.0600 618.066
19.1000 618.096
19.1500 618.117
19.1900 619.248
19.2500 619.291
19.2900 619.355
19.3400 619.385
19.3800 619.444
19.4300 619.453
19.4700temp 143.0
19.5200 619.564
19.5700 619.550
20.0100 619.577
20.0600 619.633

FILE

19.2100 619.278
19.2600 619.301
19.3000 619.411
19.3500 619.392
19.3900 619.472
19.4400 619.454
19.4800 619.500
19.5300 619.568
19.5700temp 143.0
20.0200 619.587
19.2300 619.322
19.2700temp 143.0
19.3200 619.393
19.3700 619.421
19.4100 619.459
19.4600 619.500
19.5000 619.536
19.5500 619.535
19.5900 619.579
20.0400 619.646
20.0800 619.640
20.1200 619.712
20.1700temp 143.0
20.2200 620.176
20.2700 620.152
20.3100 620.158
20.3600 620.201
20.4000 620.208
20.4500 620.256
20.4900 620.285
19.2400 619.304
19.2800 619.355
19.3300 619.393
19.3700temp 143.0
19.4200 619.459
19.4700 619.504
19.5100 619.550
19.5600 619.542
20.0000 619.582
20.0500 619.653

FILE

20.0700 619.632
20.1100 619.688
20.1600 620.140
20.2000 620.171
20.2500 620.173
20.2900 620.139
20.3400 620.203
20.3800 620.192
20.4300 620.204
20.4700temp 143.0
20.0900 619.653
20.1400 620.058
20.1800 620.165
20.2300 620.171
20.2700temp 143.0
20.3200 620.178
20.3700 620.188
20.4100 620.203
20.4600 620.270
20.5000 620.278
20.1000 619.668
20.1500 620.123
20.1900 620.170
20.2400 620.178
20.2800 620.153
20.3300 620.184
20.3700temp 143.0
20.4200 620.204
20.4700 620.286
20.5100 620.290

FILE

20.5200 620.303
20.5700 620.344
21.0100 620.392
21.0600 620.398
21.1000 620.380
21.1500 620.457
21.1900 620.503
21.2400 620.492
21.2800 620.546
21.3300 658.141
20.5400 620.337
20.5800 620.344
21.0300 620.419
21.0700temp 143.0
21.1200 620.418
21.1700 620.492
21.2100 620.550
21.2600 620.546
21.3000 620.528
21.3500 663.340
20.5500 620.342
20.5900 620.363
21.0400 620.423
21.0800 620.393
21.1300 620.431
21.1700temp 143.0
21.2200 620.532
21.2700 620.551
21.3100 620.521
21.3600 664.675
20.5600 620.350
21.0000 620.370
21.0500 620.410
21.0900 620.393
21.1400 620.434
21.1800 620.490
21.2300 620.494
21.2700temp 143.0
21.3200 635.935
21.3700 665.672

79

21.3700Temp 143.5	667.237	667.237	21.4400	667.237	667.237	21.4400	667.237	667.237
21.4400	667.237	667.237	21.4400	667.237	667.237	21.4500	667.967	667.967
21.4700	668.913	669.247	21.4700Temp 143.5	669.247	669.247	21.4900	669.516	669.516
21.5100	669.942	670.107	21.5300	670.254	670.254	21.5400	670.382	670.382
21.5600	670.598	670.696	21.5700Temp 143.5	670.696	670.696	21.5800	670.785	670.785
22.0000	670.941	671.027	22.0200	671.076	671.076	22.0300	671.146	671.146
22.0500	671.267	671.319	22.0700	671.370	671.370	22.0700Temp 143.0	671.527	671.527
22.0900	671.398	671.443	22.1100	671.486	671.486	22.1200	671.527	671.527
22.1400	671.606	671.646	22.1600	671.682	671.682	22.1700	671.717	671.717
22.1800	671.695	671.726	22.2000	671.757	671.757	22.2100	671.787	671.787

FILE

80

22.2300	671.845	671.873	22.2500	671.897	671.897	22.2600	671.924	671.924
22.2700Temp 142.1	671.903	671.903	22.2900	671.924	671.924	22.3000	671.949	671.949
22.3200	671.992	672.019	22.3400	672.040	672.040	22.3500	672.060	672.060
22.3700	672.099	672.142.1	22.3800	672.121	672.121	22.3900	672.137	672.137
22.4100	672.172	672.190	22.4300	672.206	672.206	22.4400	672.223	672.223
22.4600	672.255	672.269	22.4700Temp 141.6	672.269	672.269	22.4800	672.216	672.216
22.5000	672.244	672.259	22.5200	672.274	672.274	22.5300	672.287	672.287
22.5500	672.315	672.328	22.5700Temp 141.6	672.339	672.339	22.5700Temp 141.6	672.396	672.396
22.5900	672.364	672.376	23.0100	672.388	672.388	23.0200	672.396	672.396
23.0400	672.420	672.430	23.0600	672.442	672.442	23.0700	672.453	672.453

FILE

81

23.0800	672.394	672.403	23.1000	672.412	672.412	23.1100	672.425	672.425
23.1300	672.446	672.457	23.1500	672.465	672.465	23.1600	672.474	672.474
23.1700Temp 141.1	672.529	672.492	23.1900	672.501	672.501	23.2000	672.511	672.511
23.2200	672.529	672.537	23.2400	672.547	672.547	23.2500	672.555	672.555
23.2700	672.570	672.586	23.2800	672.510	672.510	23.2900	672.516	672.516
23.3100	672.532	672.539	23.3300	672.546	672.546	23.3400	672.554	672.554
23.3600	672.569	672.577	23.3700Temp 140.6	672.577	672.577	23.3800	672.583	672.583
23.4000	672.599	672.607	23.4200	672.613	672.613	23.4300	672.620	672.620
23.4500	672.633	672.640	23.4700	672.646	672.646	23.4700Temp 140.6	672.626	672.626
23.4900	672.661	672.668	23.5100	672.672	672.672	23.5200	672.679	672.679

FILE

82

23.5400	672.691	672.697	23.5600	672.704	672.704	23.5700	672.709	672.709
23.5800	672.647	672.652	0.0000	672.659	672.659	0.0100	672.663	672.663
0.0300	672.675	672.680	0.0500	672.686	672.686	0.0600	672.692	672.692
0.0700Temp 140.1	672.724	672.730	0.0900	672.708	672.708	0.1000	672.713	672.713
0.1200	672.749	672.730	0.1400	672.734	672.734	0.1500	672.739	672.739
0.1700	672.769	672.774	0.1800	672.754	672.754	0.1900	672.759	672.759
0.2100	672.794	672.779	0.2300	672.779	672.779	0.2400	672.784	672.784
0.2600	672.812	672.799	0.2700Temp 140.1	672.799	672.799	0.2800	672.803	672.803
0.3000	672.812	672.815	0.3200	672.820	672.820	0.3300	672.825	672.825
0.3500	672.835	672.840	0.3700	672.820	672.820	0.3700Temp 139.6	672.832	672.832

FILE

83

0.3900	672.783	672.786	0.4100	672.792	672.792	0.4200	672.794	672.794
0.4400	672.803	672.806	0.4600	672.811	672.811	0.4700	672.816	672.816
0.4800	672.819	672.824	0.5000	672.827	672.827	0.5100	672.832	672.832
0.5300	672.841	672.844	0.5500	672.847	672.847	0.5600	672.856	672.856
0.5700Temp 139.6	672.877	672.861	0.5900	672.865	672.865	1.0000	672.867	672.867
1.0200	672.877	672.879	1.0400	672.883	672.883	1.0500	672.887	672.887
1.0700	672.894	672.897	1.0800	672.897	672.897	1.0900	672.902	672.902
1.1100	672.906	672.912	1.1300	672.915	672.915	1.1400	672.920	672.920
1.1600	672.927	672.930	1.1700Temp 139.1	672.930	672.930	1.1800	672.865	672.865
1.2000	672.874	672.879	1.2200	672.882	672.882	1.2300	672.883	672.883

84

1.2500	672.892	1.2600	672.896	1.2700temp	139.1	1.2600	672.900
1.2900	672.903	1.3100	672.910	1.3200	672.913	1.3300	672.916
1.3400	672.920	1.3600	672.926	1.3700	672.930	1.3700temp	139.1
1.3800	672.934	1.4000	672.941	1.4100	672.945	1.4200	672.947
1.4300	672.951	1.4500	672.958	1.4600	672.963	1.4700	672.964
1.4700temp	139.1	1.4900	672.971	1.5000	672.974	1.5100	672.977
1.5200	672.983	1.5300	673.304	1.5300	673.304	1.5800	672.997
1.5800	672.997	1.5800temp	139.1	1.5900	672.997	2.0000	672.998
2.0100	673.002	2.0200	673.004	2.0300	673.007	2.0500	673.012
2.0600	673.014	2.0700temp	139.1	2.0800	673.016	2.0900	673.021

FILE

85

2.1000	673.022	2.1200	673.027	2.1300	673.029	2.1400	673.030
2.1500	673.034	2.1700	673.038	2.1700temp	139.1	2.1800	673.043
2.1900	673.048	2.2100	673.053	2.2200	673.055	2.2300	673.058
2.2400	673.063	2.2600	673.068	2.2700	673.069	2.2700temp	139.1
2.2800	673.074	2.3000	673.081	2.3100	673.083	2.3200	673.083
2.3300	673.085	2.3500	673.089	2.3600	673.091	2.3700	673.094
2.3700temp	138.6	2.3900	673.030	2.4000	673.032	2.4100	673.035
2.4200	673.038	2.4300	673.045	2.4500	673.050	2.4600	673.052
2.4700	673.054	2.4800temp	138.6	2.4900	673.055	2.5000	673.058
2.5100	673.062	2.5300	673.065	2.5400	673.070	2.5500	673.072

FILE

86

2.5600	673.075	2.5700temp	138.6	2.5800	673.083	2.5900	673.086
3.0000	673.069	3.0200	673.093	3.0300	673.096	3.0400	673.100
3.0500	673.100	3.0700	673.105	3.0700temp	138.6	3.0800	673.109
3.0900	673.111	3.1100	673.116	3.1200	673.119	3.1300	673.123
3.1400	673.124	3.1600	673.126	3.1700	673.129	3.1700temp	138.6
3.1800	673.131	3.2000	673.134	3.2100	673.136	3.2200	673.138
3.2300	673.141	3.2500	673.146	3.2600	673.147	3.2700	673.151
3.2700temp	138.6	3.2900	673.152	3.3000	673.154	3.3100	673.154
3.3200	673.157	3.3400	673.165	3.3500	673.165	3.3600	673.170
3.3700	673.172	3.3800temp	138.6	3.3900	673.178	3.4000	673.181

FILE

87

3.4100	673.184	3.4300	673.187	3.4400	673.190	3.4500	673.189
3.4600	673.195	3.4700temp	138.6	3.4800	673.200	3.4900	673.200
3.5000	673.202	3.5200	673.208	3.5300	673.207	3.5400	673.212
3.5500	673.212	3.5700	673.216	3.5700temp	138.6	3.5800	673.215
3.5900	673.218	4.0100	673.223	4.0200	673.223	4.0300	673.225
4.0400	673.227	4.0600	673.229	4.0700	673.233	4.0700temp	138.6
4.0800	673.235	4.1000	673.240	4.1100	673.243	4.1200	673.241
4.1300	673.243	4.1500	673.248	4.1600	673.248	4.1700	673.249
4.1700temp	138.6	4.1900	673.252	4.2000	673.252	4.2100	673.254
4.2200	673.258	4.2400	673.261	4.2500	673.263	4.2600	673.266

FILE

88

4.2700	673.267	4.2800	673.200	4.2900	673.203	4.3000	673.203
4.3100	673.204	4.3300	673.204	4.3400	673.209	4.3500	673.205
4.3600	673.211	4.3700temp	138.1	4.3800	673.216	4.3900	673.220
4.4000	673.222	4.4200	673.229	4.4300	673.229	4.4400	673.234
4.4500	673.235	4.4700	673.243	4.4700temp	138.1	4.4800	673.245
4.4900	673.245	4.5100	673.250	4.5200	673.250	4.5300	673.252
4.5400	673.254	4.5600	673.254	4.5700	673.257	4.5700temp	138.1
4.5600	673.258	5.0000	673.267	5.0100	673.268	5.0200	673.268
5.0300	673.270	5.0500	673.273	5.0600	673.275	5.0700	673.275
5.0700temp	138.1	5.0900	673.276	5.1000	673.275	5.1100	673.275

89

5.1200	673.281	5.1300	673.285	5.1400	673.287	5.1500	673.288	5.1600	673.289
5.1700	673.292	5.1700Temp	138.1	5.1800	673.295	5.1900	673.293	5.2000	673.295
5.2100	673.296	5.2200	673.296	5.2300	673.296	5.2400	673.296	5.2500	673.300
5.2600	673.301	5.2700	673.303	5.2700Temp	138.1	5.2800	673.306	5.2900	673.308
5.3000	673.309	5.3100	673.313	5.3200	673.314	5.3300	673.316	5.3400	673.318
5.3500	673.321	5.3600	673.321	5.3700	673.321	5.3700Temp	138.1	5.3800	673.323
5.3900	673.321	5.4000	673.323	5.4100	673.325	5.4200	673.326	5.4300	673.329
5.4400	673.331	5.4500	673.332	5.4600	673.336	5.4700	673.338	5.4700Temp	138.1
5.4800	673.340	5.4900	673.340	5.5000	673.344	5.5100	673.343	5.5200	673.347
5.5300	673.349	5.5400	673.352	5.5500	673.357	5.5600	673.359	5.5700	673.363

FILE

90

5.5700Temp	138.1	5.5600	673.365	5.5900	673.367	6.0000	673.370	6.0100	673.372
6.0200	673.374	6.0300	673.377	6.0400	673.378	6.0500	673.382	6.0600	673.380
6.0700	673.380	6.0700Temp	138.1	6.0800	673.385	6.0900	673.382	6.1000	673.382
6.1100	673.382	6.1200	673.382	6.1300	673.380	6.1400	673.380	6.1500	673.382
6.1600	673.382	6.1700	673.384	6.1700Temp	138.1	6.1800	673.385	6.1900	673.385
6.2000	673.387	6.2100	673.389	6.2200	673.390	6.2300	673.390	6.2400	673.392
6.2500	673.394	6.2600	673.394	6.2700	673.397	6.2700Temp	138.1	6.2800	673.397
6.2900	673.398	6.3000	673.400	6.3100	673.396	6.3200	673.400	6.3300	673.400
6.3400	673.400	6.3500	673.402	6.3600	673.405	6.3700	673.408	6.3700Temp	138.1
6.3800	673.411	6.3900	673.414	6.4000	673.418	6.4100	673.420	6.4200	673.422

FILE

91

6.4300	673.422	6.4400	673.422	6.4500	673.423	6.4600	673.423	6.4700	673.420
6.4700Temp	138.1	6.4800	673.423	6.4900	673.423	6.5000	673.422	6.5100	673.423
6.5200	673.425	6.5300	673.425	6.5400	673.426	6.5500	673.427	6.5600	673.427
6.5700	673.428	6.5700Temp	138.1	6.5800	673.430	6.5900	673.428	7.0000	673.431
7.0100	673.431	7.0200	673.431	7.0300	673.435	7.0400	673.438	7.0500	673.438
7.0600	673.440	7.0700	673.443	7.0700Temp	138.1	7.0800	673.445	7.0900	673.446
7.1000	673.448	7.1100	673.451	7.1200	673.451	7.1300	673.453	7.1400	673.458
7.1500	673.460	7.1600	673.460	7.1700	673.462	7.1800	673.465	7.1900	673.465
7.1900	673.465	7.2000	673.466	7.2100	673.469	7.2200	673.469	7.2300	673.471
7.2400	673.474	7.2500	673.479	7.2600	673.479	7.2700	673.481	7.2700Temp	138.1

FILE

92

7.2800	673.484	7.2900	673.487	7.3000	673.487	7.3100	673.489	7.3200	673.487
7.3300	673.484	7.3400	673.491	7.3500	673.489	7.3600	673.492	7.3700	673.491
7.3700Temp	138.1	7.3800	673.492	7.3900	673.494	7.4000	673.494	7.4100	673.492
7.4200	673.496	7.4300	673.498	7.4400	673.498	7.4500	673.500	7.4600	673.502
7.4700	673.502	7.4700Temp	138.1	7.4800	673.502	7.4900	673.502	7.5000	673.502
7.5100	673.499	7.5200	673.504	7.5300	673.504	7.5400	673.504	7.5500	673.504
7.5600	673.502	7.5700	673.500	7.5700Temp	137.6	7.5800	673.436	7.5900	673.439
8.0000	673.438	8.0100	673.438	8.0200	673.440	8.0300	673.444	8.0400	673.445
8.0500	673.447	8.0600	673.447	8.0700	673.454	8.0700Temp	137.6	8.0800	673.454
8.0900	673.456	8.1000	673.457	8.1100	673.459	8.1200	673.459	8.1300	673.460

FILE

93

8.1400	673.460	8.1500	673.457	8.1600	673.454	8.1700	673.460	8.1700Temp	137.6
8.1800	673.459	8.1900	673.459	8.2000	673.460	8.2100	673.462	8.2200	673.462
8.2300	673.462	8.2400	673.464	8.2500	673.465	8.2600	673.465	8.2700	673.467
8.2700Temp	137.6	8.2800	673.467	8.2900	673.469	8.3000	673.470	8.3100	673.470
8.3200	673.474	8.3300	673.477	8.3400	673.477	8.3500	673.483	8.3600	673.485
8.3700	673.489	8.3700Temp	137.6	8.3800	673.490	8.3900	673.490	8.4000	673.490
8.4100	673.490	8.4200	673.491	8.4300	673.494	8.4400	673.495	8.4500	673.495
8.4600	673.495	8.4700	673.496	8.4700Temp	137.6	8.4800	673.502	8.4900	673.502
8.5000	673.505	8.5100	673.507	8.5200	673.505	8.5300	673.507	8.5400	673.506
8.5500	673.507	8.5600	673.508	8.5700	673.508	8.5700Temp	137.6	8.5800	673.508

94

8.5900	673.510	9.0000	673.511	9.0100	673.510	9.0200	673.511	9.0300	673.513
9.0400	673.513	9.0500	673.515	9.0600	673.516	9.0700	673.516	9.0700Temp	137.6
9.0800	673.521	9.0900	673.523	9.1000	673.525	9.1100	673.527	9.1200	673.525
9.1300	673.527	9.1400	673.527	9.1500	673.528	9.1600	673.529	9.1700	673.529
9.1700Temp	137.6	9.1800	673.535	9.1900	673.533	9.2000	673.536	9.2100	673.536
9.2200	673.536	9.2300	673.536	9.2400	673.536	9.2500	673.536	9.2600	673.540
9.2700	673.540	9.2700Temp	137.6	9.2800	673.541	9.2900	673.540	9.3000	673.545
9.3100	673.545	9.3200	673.545	9.3300	673.546	9.3400	673.548	9.3500	673.548
9.3600	673.546	9.3700	673.545	9.3700Temp	137.6	9.3800	673.549	9.3900	673.546
9.4000	673.549	9.4100	673.549	9.4200	673.551	9.4300	673.551	9.4400	673.553

95

9.4500	673.554	9.4600	673.556	9.4700	673.556	9.4700Temp	137.6	9.4800	673.559
9.4900	673.561	9.5000	673.562	9.5100	673.561	9.5200	673.565	9.5300	673.566
9.5400	673.569	9.5500	673.569	9.5600	673.567	9.5700	673.571	9.5700Temp	137.6
9.5800	673.573	9.5900	673.574	10.0000	673.578	10.0100	673.578	10.0200	673.580
10.0300	673.579	10.0400	673.579	10.0500	673.580	10.0600	673.580	10.0700	673.579
10.0700Temp	137.6	10.0800	673.579	10.0900	673.578	10.1000	673.579	10.1100	673.579
10.1200	673.579	10.1300	673.584	10.1400	673.586	10.1500	673.586	10.1600	673.591
10.1700	673.591	10.1700Temp	137.6	10.1800	673.586	10.1900	673.594	10.2000	673.594
10.2100	673.594	10.2200	673.596	10.2300	673.596	10.2400	673.592	10.2500	673.594
10.2600	673.596	10.2700	673.594	10.2700Temp	137.6	10.2800	673.599	10.2900	673.599

96

10.3000	673.599	10.3100	673.600	10.3200	673.599	10.3300	673.599	10.3400	673.600
10.3500	673.602	10.3600	673.602	10.3700	673.602	10.3700Temp	137.6	10.3800	673.602
10.3900	673.602	10.4000	673.604	10.4100	673.605	10.4200	673.607	10.4300	673.610
10.4400	673.612	10.4500	673.612	10.4600	673.616	10.4700	673.616	10.4700Temp	137.6
10.4800	673.616	10.4900	673.616	10.5000	673.616	10.5100	673.617	10.5200	673.617
10.5300	673.617	10.5400	673.618	10.5500	673.620	10.5600	673.618	10.5700	673.618
10.5700Temp	137.6	10.5800	673.620	10.5900	673.622	11.0000	673.624	11.0100	673.625
11.0200	673.624	11.0300	673.624	11.0400	673.622	11.0500	673.622	11.0600	673.622
11.0700	673.627	11.0700Temp	137.6	11.0700	673.627	11.0700	673.627	11.0700	673.627
11.1400	673.632	11.1400	673.632	11.1400	673.632	11.1400	673.632	11.1500	673.633

97

11.1600	673.633	11.1700	673.635	11.1700Temp	137.6	11.1800	673.637	11.1900	673.637
11.2000	673.635	11.2100	673.638	11.2200	673.640	11.2300	673.640	11.2400	673.643
11.2500	673.643	11.2600	673.645	11.2700	673.647	11.2700Temp	137.6	11.2800	673.648
11.2900	673.648	11.3000	673.651	11.3100	673.651	11.3200	673.651	11.3300	673.650
11.3400	673.651	11.3500	673.651	11.3600	673.655	11.3700	673.656	11.3700Temp	137.6
11.3800	673.658	11.3900	673.660	11.4000	673.658	11.4100	673.662	11.4200	673.662
11.4300	673.663	11.4400	673.663	11.4500	673.663	11.4600	673.662	11.4700	673.658
11.4700Temp	137.6	11.4800	673.663	11.4900	673.665	11.5000	673.668	11.5100	673.668
11.5200	673.670	11.5300	673.670	11.5400	673.670	11.5500	673.671	11.5600	673.673
11.5700	673.675	11.5700Temp	137.6	11.5800	673.675	11.5900	673.675	12.0000	673.678

98

12.0100	673.678	12.0200	673.678	12.0300	673.678	12.0400	673.680	12.0500	673.681
12.0600	673.681	12.0700	673.681	12.0700Temp	137.6	12.0800	673.680	12.0900	673.680
12.1000	673.680	12.1100	673.680	12.1200	673.680	12.1300	673.681	12.1400	673.681
12.1500	673.685	12.1600	673.686	12.1700	673.685	12.1700Temp	137.6	12.1800	673.689
12.1900	673.691	12.2000	673.686	12.2100	673.688	12.2200	673.688	12.2300	673.686
12.2400	673.686	12.2500	673.685	12.2600	673.686	12.2700	673.665	12.2700Temp	137.6
12.2800	673.693	12.2900	673.694	12.3000	673.694	12.3100	673.696	12.3200	673.701
12.3200	673.700	12.3200	673.701	12.3300	673.700	12.3400	673.701	12.3500	673.701
12.3700Temp	137.6	12.3800	673.701	12.3900	673.700	12.4000	673.700	12.4100	673.700
12.4200	673.700	12.4300	673.701	12.4400	673.701	12.4500	673.702	12.4600	673.701

13

16.3400	673.784	673.783	16.3600	673.784	16.3700	673.787	16.3700Temp	137.1
16.3800	673.788	673.790	16.4000	673.791	16.4100	673.793	16.4200	673.793
16.4300	673.793	673.795	16.4500	673.796	16.4600	673.796	16.4700	673.798
16.4700Temp	137.1	673.800	16.4900	673.800	16.5000	673.801	16.5100	673.801
16.5200	673.800	673.800	16.5400	673.800	16.5500	673.800	16.5600	673.798
16.5700	673.800	673.803	16.5800	673.803	16.5900	673.803	17.0000	673.803
17.0100	673.803	673.803	17.0300	673.803	17.0400	673.804	17.0500	673.804
17.0600	673.804	673.803	17.0700Temp	137.1	17.0800	673.804	17.0900	673.803
17.1000	673.804	673.804	17.1200	673.807	17.1300	673.806	17.1400	673.811
17.1500	673.811	673.813	17.1700	673.814	17.1700Temp	137.1	17.1800	673.816

FILE

-14

17.1900	673.816	673.818	17.2100	673.816	17.2200	673.816	17.2300	673.814
17.2400	673.816	673.816	17.2600	673.814	17.2700	673.818	17.2700Temp	137.1
17.2800	673.816	673.816	17.3000	673.816	17.3100	673.816	17.3200	673.816
17.3300	673.818	673.820	17.3500	673.820	17.3600	673.821	17.3700	673.820
17.3700Temp	137.1	673.820	17.3900	673.821	17.4000	673.821	17.4100	673.820
17.4200	673.820	673.820	17.4300	673.820	17.4400	673.816	17.4600	673.816
17.4700	673.816	673.818	17.4800	673.818	17.4900	673.820	17.5000	673.820
17.5100	673.818	673.818	17.5300	673.822	17.5400	673.824	17.5500	673.824
17.5600	673.824	673.824	17.5700Temp	137.1	17.5800	673.824	17.5900	673.824
18.0000	673.824	673.824	18.0200	673.826	18.0300	673.829	18.0400	673.833

FILE

-15

18.0500	673.834	673.834	18.0700	673.836	18.0700Temp	137.1	18.0800	673.836
18.0900	673.836	673.836	18.1100	673.838	18.1200	673.838	18.1300	673.836
18.1400	673.839	673.841	18.1600	673.842	18.1700	673.842	18.1700Temp	137.1
18.1800	673.844	673.844	18.2000	673.844	18.2100	673.846	18.2200	673.846
18.2300	673.846	673.847	18.2500	673.846	18.2600	673.844	18.2700	673.844
18.2700Temp	137.1	673.842	18.2900	673.842	18.3000	673.841	18.3100	673.841
18.3200	673.839	673.839	18.3400	673.842	18.3500	673.842	18.3600	673.844
18.3700	673.844	673.844	18.3800	673.844	18.3900	673.842	18.4000	673.844
18.4100	673.844	673.844	18.4300	673.846	18.4400	673.849	18.4500	673.851
18.4600	673.852	673.852	18.4700Temp	137.1	18.4800	673.854	18.4900	673.854

FILE

-16

18.5000	673.855	673.858	18.5200	673.859	18.5300	673.860	18.5400	673.862
18.5500	673.864	673.864	18.5700	673.866	18.5700Temp	137.1	18.5700	673.866
18.5700	673.866	673.866	19.0400	673.860	19.0400	673.860	19.0400	673.860
19.0400	673.860	673.862	19.0600	673.860	19.0700	673.862	19.0700Temp	137.1
19.0800	673.862	673.862	19.1000	673.864	19.1100	673.864	19.1200	673.864
19.1300	673.866	673.867	19.1500	673.867	19.1600	673.867	19.1700	673.869
19.1700Temp	137.1	673.871	19.1900	673.871	19.2000	673.871	19.2100	673.871
19.2200	673.871	673.872	19.2400	673.874	19.2500	673.875	19.2600	673.875
19.2700	673.875	673.875	19.2900	673.879	19.2900	673.880	19.3000	673.882
19.3100	673.882	673.882	19.3300	673.880	19.3400	673.884	19.3500	673.884

FILE

-17

19.3600	673.885	673.885	19.3700Temp	137.1	19.3800	673.885	19.3900	673.885
19.4000	673.885	673.885	19.4200	673.887	19.4300	673.887	19.4400	673.887
19.4500	673.887	673.889	19.4700	673.890	19.4700Temp	137.1	19.4800	673.892
19.4900	673.892	673.892	19.5100	673.892	19.5200	673.892	19.5300	673.895
19.5400	673.893	673.892	19.5600	673.893	19.5700	673.892	19.5700Temp	137.1
19.5800	673.895	673.893	20.0000	673.893	20.0100	673.893	20.0200	673.893
20.0300	673.892	673.892	20.0500	673.895	20.0600	673.893	20.0700	673.895
20.0700Temp	137.1	673.892	20.0900	673.897	20.1000	673.897	20.1100	673.900
20.1200	673.902	673.904	20.1400	673.902	20.1500	673.900	20.1600	673.900
20.1700	673.904	673.904	20.1800	673.905	20.1900	673.904	20.2000	673.907

-18

20.2100	673.905	673.904	20.2300	673.904	20.2500	673.904
20.2600	673.902	673.904	20.2700Temp 137.1	673.905	20.2800	673.907
20.3000	673.905	673.907	20.3200	673.905	20.3400	673.907
20.3500	673.909	673.910	20.3700Temp 137.1	673.911	20.3800	673.911
20.3900	673.911	673.913	20.4100	673.913	20.4300	673.911
20.4400	673.911	673.911	20.4600	673.913	20.4700Temp 137.1	673.917
20.4800	673.913	673.915	20.5000	673.917	20.5200	673.917
20.5300	673.917	673.917	20.5500	673.917	20.5700	673.918
20.5700Temp 137.1	673.918	673.918	20.5900	673.918	21.0100	673.918
21.0200	673.918	673.918	21.0400	673.918	21.0600	673.920

FILE

-19

21.0700	673.920	673.922	21.0900	673.922	21.1000	673.922
21.1100	673.923	673.923	21.1300	673.925	21.1500	673.922
21.1600	673.922	673.920	21.1700Temp 137.1	673.927	21.1900	673.922
21.2000	673.925	673.925	21.2200	673.927	21.2400	673.928
21.2500	673.930	673.928	21.2700	673.928	21.2800	673.930
21.2900	673.930	673.930	21.3100	673.930	21.3300	673.930
21.3400	673.930	673.931	21.3600	673.935	21.3700Temp 137.1	673.936
21.3800	673.936	673.940	21.4000	673.940	21.4200	673.936
21.4300	673.938	673.938	21.4500	673.936	21.4700	673.938
21.4700Temp 137.1	673.938	673.936	21.4900	673.936	21.5100	673.936

FILE

-20

21.5200	673.935	673.935	21.5400	673.935	21.5600	673.940
21.5700	673.943	673.946	21.5900	673.946	22.0000	673.946
22.0100	673.949	673.951	22.0300	673.955	22.0500	673.958
22.0600	673.956	673.956	22.0700Temp 137.1	673.956	22.0800	673.958
22.1000	673.958	673.956	22.1200	673.956	22.1400	673.956
22.1500	673.956	673.956	22.1700Temp 137.1	673.955	22.1800	673.958
22.1900	673.956	673.956	22.2100	673.956	22.2300	673.956
22.2400	673.958	673.956	22.2600	673.956	22.2700Temp 137.1	673.956
22.2800	673.958	673.956	22.3000	673.956	22.3200	673.953
22.3300	673.953	673.953	22.3500	673.955	22.3700	673.956

FILE

-21

22.3700Temp 137.1	673.956	673.956	22.3900	673.958	22.4100	673.960
22.4200	673.961	673.961	22.4400	673.963	22.4600	673.961
22.4700	673.961	673.961	22.4800	673.961	22.5000	673.963
22.5100	673.964	673.964	22.5300	673.966	22.5500	673.966
22.5600	673.966	673.966	22.5700Temp 137.1	673.964	22.5900	673.964
23.0000	673.964	673.964	23.0200	673.964	23.0400	673.964
23.0500	673.964	673.963	23.0700	673.963	23.0800	673.963
23.0900	673.961	673.961	23.1100	673.960	23.1300	673.963
23.1400	673.966	673.968	23.1600	673.968	23.1700Temp 137.1	673.963
23.1800	673.968	673.968	23.2000	673.966	23.2200	673.968

FILE

-22

23.2300	673.969	673.971	23.2500	673.971	23.2700	673.973
23.2700Temp 137.1	673.971	673.971	23.2900	673.971	23.3100	673.973
23.3200	673.973	673.973	23.3400	673.973	23.3600	673.973
23.3700	673.971	673.971	23.3800	673.971	23.4000	673.971
23.4100	673.973	673.971	23.4300	673.973	23.4500	673.971
23.4600	673.973	673.974	23.4700Temp 137.1	673.976	23.4900	673.976
23.5000	673.976	673.978	23.5200	673.978	23.5400	673.978
23.5500	673.978	673.976	23.5700	673.976	23.5800	673.976
23.5900	673.978	673.976	0.0100	673.978	0.0300	673.981
0.0400	673.975	673.981	0.0500	673.981	0.0700Temp 137.1	673.981

FILE -23

0.0800	673.982	0.0900	673.982	0.1000	673.982	0.1100	673.981	0.1200	673.984
0.1300	673.984	0.1400	673.986	0.1500	673.986	0.1600	673.987	0.1700	673.989
0.1700Temp	137.1	0.1800	673.993	0.1900	673.993	0.2000	673.993	0.2100	673.994
0.2200	673.994	0.2300	673.994	0.2400	673.995	0.2500	673.998	0.2600	673.999
0.2700	673.998	0.2700Temp	137.1	0.2800	673.999	0.2900	673.995	0.3000	673.998
0.3100	673.995	0.3200	673.995	0.3300	673.995	0.3400	673.998	0.3500	673.995
0.3600	673.995	0.3700	673.995	0.3700Temp	137.1	0.3800	673.998	0.3900	673.995
0.4000	673.999	0.4100	674.001	0.4200	674.002	0.4300	674.004	0.4400	674.004
0.4500	674.002	0.4600	674.002	0.4700	674.002	0.4700Temp	137.1	0.4800	674.004
0.4900	674.006	0.5000	674.006	0.5100	674.006	0.5200	674.004	0.5300	674.004

FILE -24

0.0000	0.000	0.0000	0.000	0.0000	0.000	0.0000	0.0000	0.0000	0.0000
--------	-------	--------	-------	--------	-------	--------	--------	--------	--------