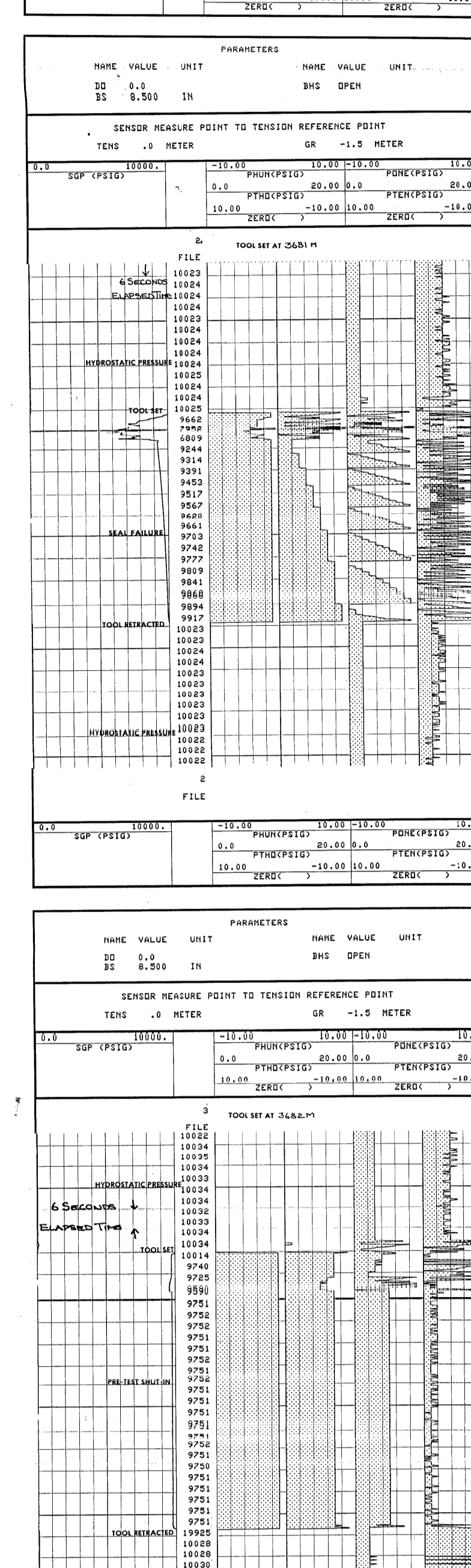


TYPE FLUID IN HOLES: SPERGELINE/OP-80
DENSITY: 1.05 G/CC
VISCOSITY: 15.00
FLUID LOSS: 11.00
RMC: 9703 DHRM AT 12.8 BC
RMC: 9704 DHRM AT 12.8 BC
RMC: 9705 DHRM AT 12.8 BC
RMC: 9706 DHRM AT 12.8 BC
RMC: 9707 DHRM AT 12.8 BC
RMC: 9708 DHRM AT 12.8 BC
RMC: 9709 DHRM AT 12.8 BC
RMC: 9710 DHRM AT 12.8 BC
RMC: 9711 DHRM AT 12.8 BC
RMC: 9712 DHRM AT 12.8 BC
RMC: 9713 DHRM AT 12.8 BC
RMC: 9714 DHRM AT 12.8 BC
RMC: 9715 DHRM AT 12.8 BC
RMC: 9716 DHRM AT 12.8 BC
RMC: 9717 DHRM AT 12.8 BC
RMC: 9718 DHRM AT 12.8 BC
RMC: 9719 DHRM AT 12.8 BC
RMC: 9720 DHRM AT 12.8 BC
RMC: 9721 DHRM AT 12.8 BC
RMC: 9722 DHRM AT 12.8 BC
RMC: 9723 DHRM AT 12.8 BC
RMC: 9724 DHRM AT 12.8 BC
RMC: 9725 DHRM AT 12.8 BC
RMC: 9726 DHRM AT 12.8 BC
RMC: 9727 DHRM AT 12.8 BC
RMC: 9728 DHRM AT 12.8 BC
RMC: 9729 DHRM AT 12.8 BC
RMC: 9730 DHRM AT 12.8 BC
RMC: 9731 DHRM AT 12.8 BC
RMC: 9732 DHRM AT 12.8 BC
RMC: 9733 DHRM AT 12.8 BC
RMC: 9734 DHRM AT 12.8 BC
RMC: 9735 DHRM AT 12.8 BC
RMC: 9736 DHRM AT 12.8 BC
RMC: 9737 DHRM AT 12.8 BC
RMC: 9738 DHRM AT 12.8 BC
RMC: 9739 DHRM AT 12.8 BC
RMC: 9740 DHRM AT 12.8 BC
RMC: 9741 DHRM AT 12.8 BC
RMC: 9742 DHRM AT 12.8 BC
RMC: 9743 DHRM AT 12.8 BC
RMC: 9744 DHRM AT 12.8 BC
RMC: 9745 DHRM AT 12.8 BC
RMC: 9746 DHRM AT 12.8 BC
RMC: 9747 DHRM AT 12.8 BC
RMC: 9748 DHRM AT 12.8 BC
RMC: 9749 DHRM AT 12.8 BC
RMC: 9750 DHRM AT 12.8 BC
RMC: 9751 DHRM AT 12.8 BC
RMC: 9752 DHRM AT 12.8 BC
RMC: 9753 DHRM AT 12.8 BC
RMC: 9754 DHRM AT 12.8 BC
RMC: 9755 DHRM AT 12.8 BC
RMC: 9756 DHRM AT 12.8 BC
RMC: 9757 DHRM AT 12.8 BC
RMC: 9758 DHRM AT 12.8 BC
RMC: 9759 DHRM AT 12.8 BC
RMC: 9760 DHRM AT 12.8 BC
RMC: 9761 DHRM AT 12.8 BC
RMC: 9762 DHRM AT 12.8 BC
RMC: 9763 DHRM AT 12.8 BC
RMC: 9764 DHRM AT 12.8 BC
RMC: 9765 DHRM AT 12.8 BC
RMC: 9766 DHRM AT 12.8 BC
RMC: 9767 DHRM AT 12.8 BC
RMC: 9768 DHRM AT 12.8 BC
RMC: 9769 DHRM AT 12.8 BC
RMC: 9770 DHRM AT 12.8 BC
RMC: 9771 DHRM AT 12.8 BC
RMC: 9772 DHRM AT 12.8 BC
RMC: 9773 DHRM AT 12.8 BC
RMC: 9774 DHRM AT 12.8 BC
RMC: 9775 DHRM AT 12.8 BC
RMC: 9776 DHRM AT 12.8 BC
RMC: 9777 DHRM AT 12.8 BC
RMC: 9778 DHRM AT 12.8 BC
RMC: 9779 DHRM AT 12.8 BC
RMC: 9780 DHRM AT 12.8 BC
RMC: 9781 DHRM AT 12.8 BC
RMC: 9782 DHRM AT 12.8 BC
RMC: 9783 DHRM AT 12.8 BC
RMC: 9784 DHRM AT 12.8 BC
RMC: 9785 DHRM AT 12.8 BC
RMC: 9786 DHRM AT 12.8 BC
RMC: 9787 DHRM AT 12.8 BC
RMC: 9788 DHRM AT 12.8 BC
RMC: 9789 DHRM AT 12.8 BC
RMC: 9790 DHRM AT 12.8 BC
RMC: 9791 DHRM AT 12.8 BC
RMC: 9792 DHRM AT 12.8 BC
RMC: 9793 DHRM AT 12.8 BC
RMC: 9794 DHRM AT 12.8 BC
RMC: 9795 DHRM AT 12.8 BC
RMC: 9796 DHRM AT 12.8 BC
RMC: 9797 DHRM AT 12.8 BC
RMC: 9798 DHRM AT 12.8 BC
RMC: 9799 DHRM AT 12.8 BC
RMC: 9800 DHRM AT 12.8 BC

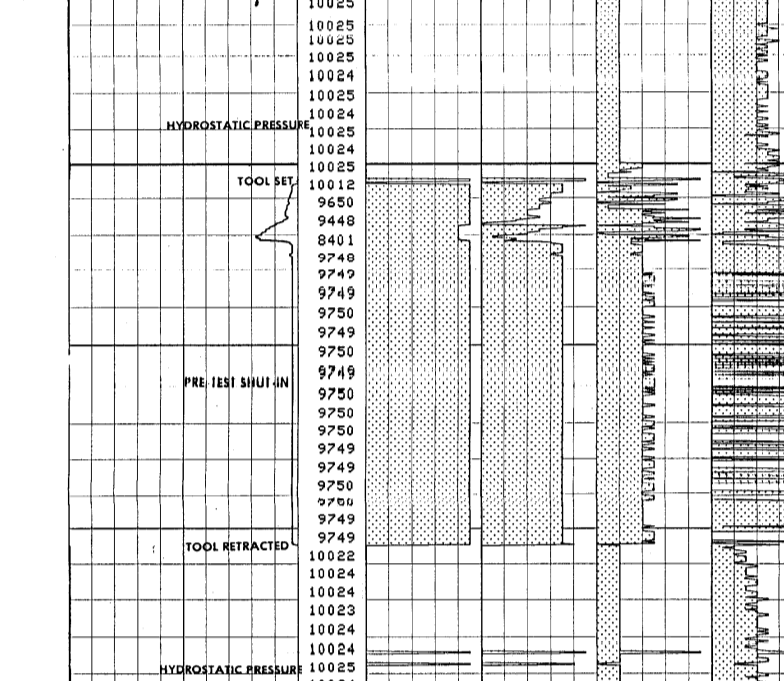
REMARKS: PISA USED. ISF-338DC-SPSI-OR RUNS USED FOR CORRELATION.
BRITE CENTER # 325
PPH INCL. MAXIMUM DEVIATION = 3 3/4 DEG AT 3100 METERS.
MAXIMUM RECORDS TEMPERATURE WERE 254, 254, 250 DEG F.

EQUIPMENT NUMBERS:
RPM-A 1943 SSC-2AR 886 PIN-BA 742 RFC-AB 459
RPM-B 444 RPM-AA 344 RFP-AA 444

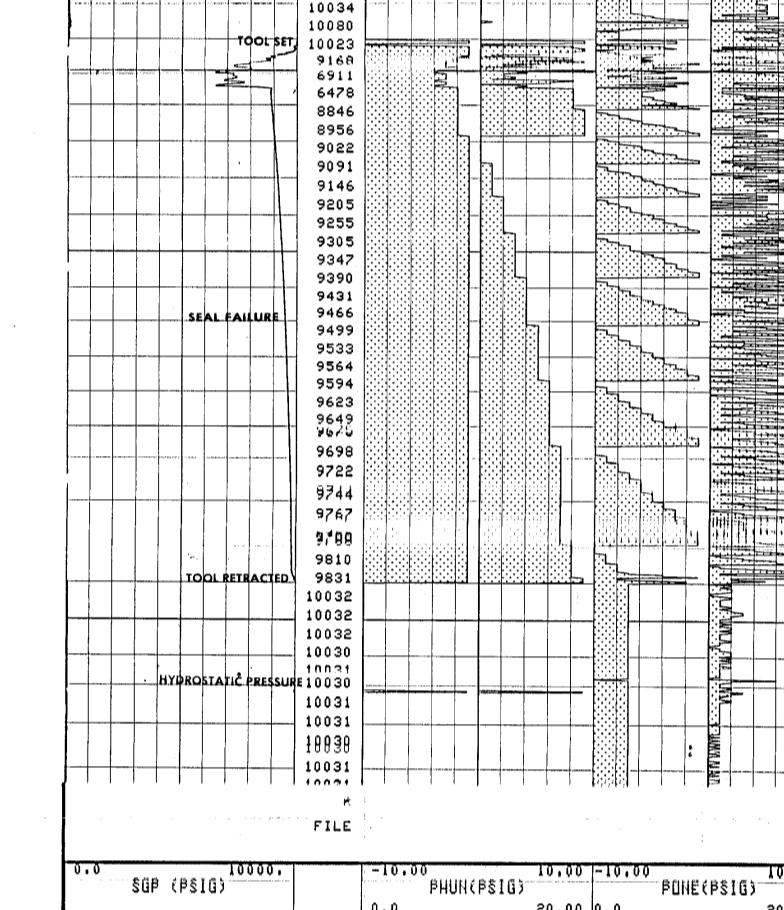
ALL INTERPRETATIONS ARE OPINIONS BASED ON INFERENCE FROM ELECTRICAL OR OTHER MEASUREMENTS. COMPANY AND ISM GUARANTEES THE ACCURACY OR CORRECTNESS OF ANY INTERPRETATIONS, AND WE SHALL NOT, EXCEPT IN THE CASE OF NEGLIGENCE OR WILLFUL NEGLIGENCE ON OUR PART, BE LIABLE OR RESPONSIBLE FOR ANY LOSSES, COSTS, DAMAGES OR EXPENSES INCURRED OR SUSTAINED BY ANYONE RESULTING FROM ANY INTERPRETATION MADE BY ANY OF OUR OFFICERS, AGENTS OR EMPLOYEES. THESE INTERPRETATIONS ARE ALSO SUBJECT TO OUR GENERAL TERMS AND CONDITIONS AS SET FORTH IN OUR "GEOLOGICAL FIELD SURVEILLANCE" FILE.



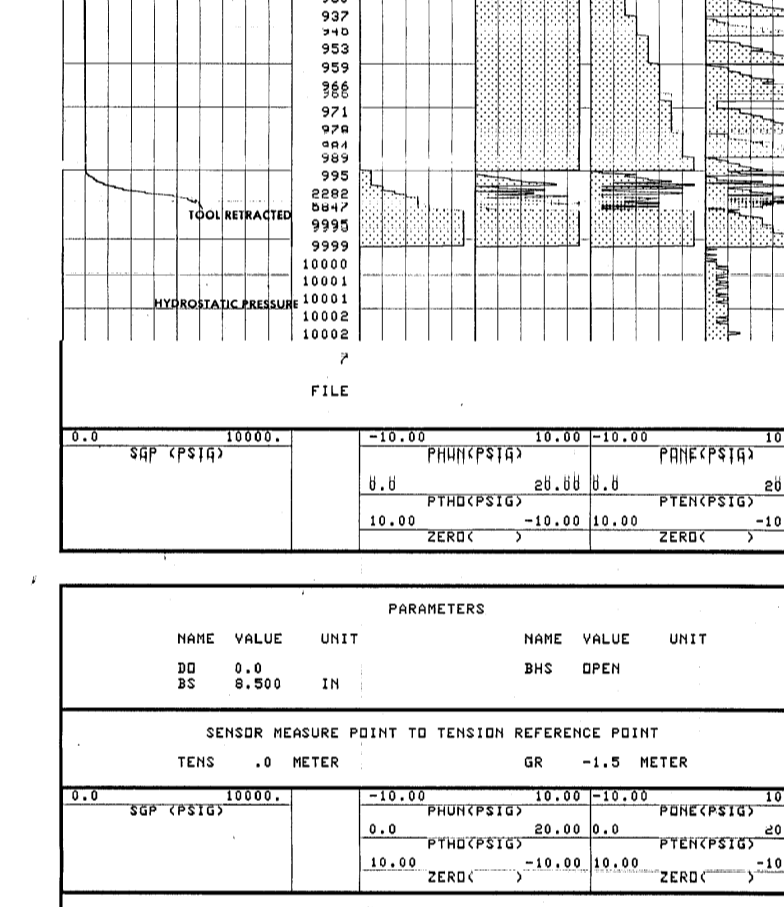
NAME VALUE UNIT PARAMETERS NAME VALUE UNIT
DD 0.0 IN BMS OPEN
DS 8.500 IN
SENSORS MEASURE POINT TO TENSION REFERENCE POINT GR -1.5 METER
TENS .0 METER



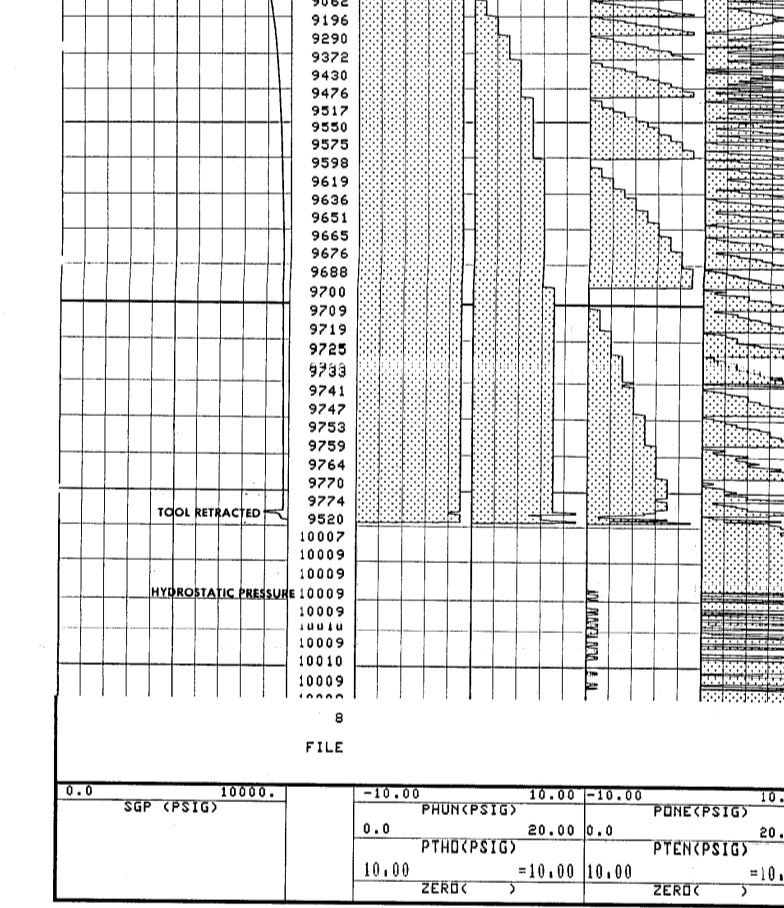
NAME VALUE UNIT PARAMETERS NAME VALUE UNIT
DD 0.0 IN BMS OPEN
DS 8.500 IN
SENSORS MEASURE POINT TO TENSION REFERENCE POINT GR -1.5 METER
TENS .0 METER



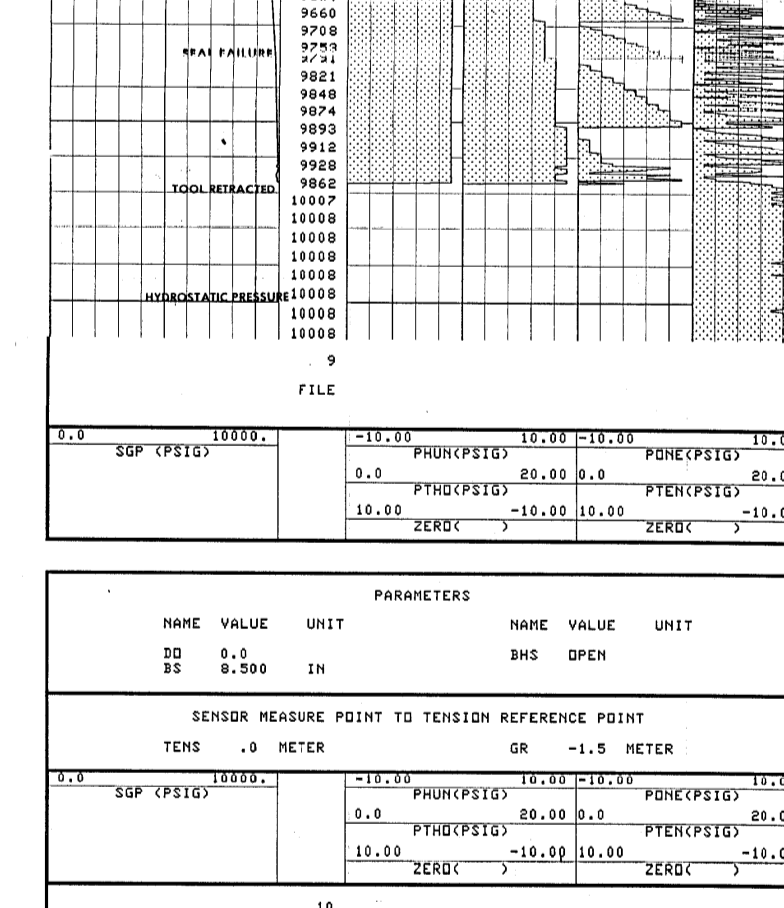
NAME VALUE UNIT PARAMETERS NAME VALUE UNIT
DD 0.0 IN BMS OPEN
DS 8.500 IN
SENSORS MEASURE POINT TO TENSION REFERENCE POINT GR -1.5 METER
TENS .0 METER



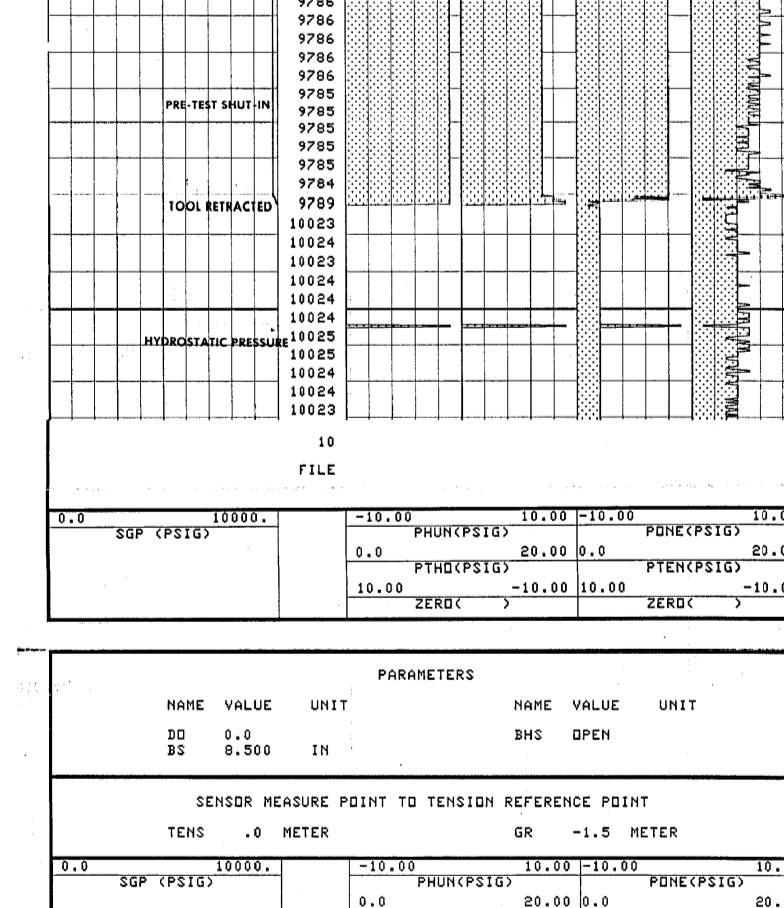
NAME VALUE UNIT PARAMETERS NAME VALUE UNIT
DD 0.0 IN BMS OPEN
DS 8.500 IN
SENSORS MEASURE POINT TO TENSION REFERENCE POINT GR -1.5 METER
TENS .0 METER



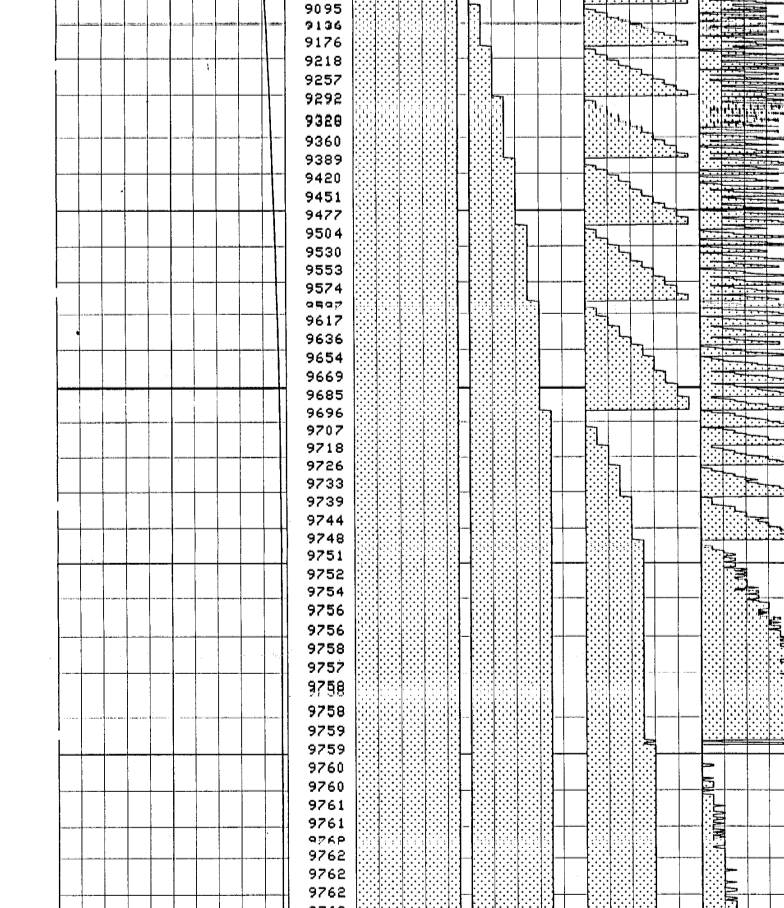
NAME VALUE UNIT PARAMETERS NAME VALUE UNIT
DD 0.0 IN BMS OPEN
DS 8.500 IN
SENSORS MEASURE POINT TO TENSION REFERENCE POINT GR -1.5 METER
TENS .0 METER



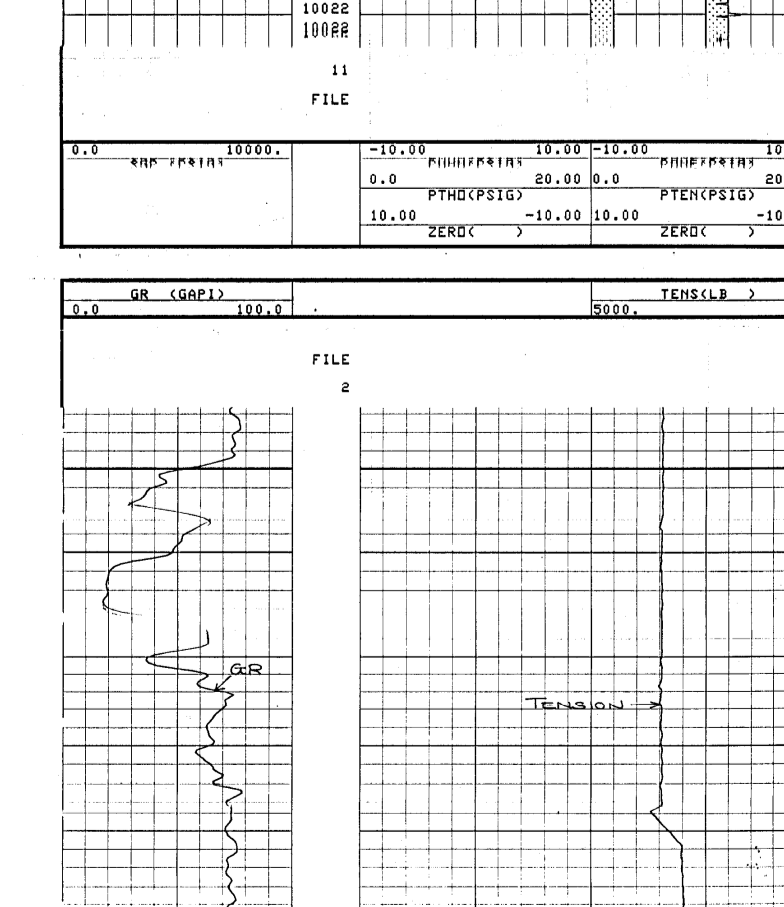
NAME VALUE UNIT PARAMETERS NAME VALUE UNIT
DD 0.0 IN BMS OPEN
DS 8.500 IN
SENSORS MEASURE POINT TO TENSION REFERENCE POINT GR -1.5 METER
TENS .0 METER



NAME VALUE UNIT PARAMETERS NAME VALUE UNIT
DD 0.0 IN BMS OPEN
DS 8.500 IN
SENSORS MEASURE POINT TO TENSION REFERENCE POINT GR -1.5 METER
TENS .0 METER



NAME VALUE UNIT PARAMETERS NAME VALUE UNIT
DD 0.0 IN BMS OPEN
DS 8.500 IN
SENSORS MEASURE POINT TO TENSION REFERENCE POINT GR -1.5 METER
TENS .0 METER



NAME VALUE UNIT PARAMETERS NAME VALUE UNIT
DD 0.0 IN BMS OPEN
DS 8.500 IN
SENSORS MEASURE POINT TO TENSION REFERENCE POINT GR -1.5 METER
TENS .0 METER

REPEAT FLUATION TESTER PRESSURE TEST SUMMARY

Run	Depth	Pressure	Flow Rate	Flow Rate	Flow Rate
1	3685.0	9.50	1.20	1.20	1.20
2	3685.0	9.50	1.20	1.20	1.20
3	3685.0	9.50	1.20	1.20	1.20
4	3685.0	9.50	1.20	1.20	1.20
5	3685.0	9.50	1.20	1.20	1.20
6	3685.0	9.50	1.20	1.20	1.20
7	3685.0	9.50	1.20	1.20	1.20
8	3685.0	9.50	1.20	1.20	1.20
9	3685.0	9.50	1.20	1.20	1.20
10	3685.0	9.50	1.20	1.20	1.20

3685.0 RFT-OR RUNS 23/7/82