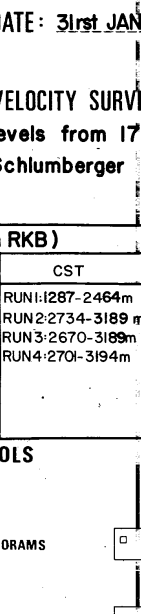


statoil /NORSK HYDRO/ESSO
15/9-15
COMPLETION LOG
 Scale 1:500

COORDINATES: 58° 18' 07.45" N
 01° 55' 19.67" E
 K.B.: 25m
 WATER DEPTH: 83m
 TOTAL DEPTH: 3200m
 DEEPEST FEN: TRIASSIC
 SPUD DATE: 28th May 1982
 RIG RELEASE DATE: 1st Aug 1982
 WELL STATUS: Plugged and abandoned
 RIG: ROSS RIG
 CONTRACTOR: ROSS DRILLING CO.
 GEOLOGISTS: J. JENSEN, J.M. ØSTBY, K.SKAR
 PREPARED BY: L. JENSEN, J.M. ØSTBY, K.SKAR
 DATE: 31st JANUARY 1983



FORMATION INTEGR/ LEAK OFF TESTS
 1.65 g/cc
 1.88 g/cc
 1.87 g/cc (EQUV. MUD WEIGHT)

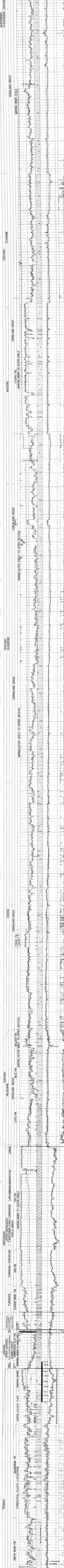
VELOCITY SURVEY: 20 checks with levels from 175-3200m RKB by Schlumberger

LOGS RUN (m RKB)	DEPTH (m RKB)	LOGS RUN (m RKB)	DEPTH (m RKB)
RUN1 175-210	RUN2 210-290	RUN3 290-300	RUN4 300-303m
RUN5 303-309m	RUN6 309-318m	RUN7 318-320m	RUN8 320-323m
RUN9 323-324m	RUN10 324-325m	RUN11 325-326m	RUN12 326-327m

LITHOLOGIC SYMBOLS

SAND	SHALE	SLT. SILTSTONE	CLAY	CLAYSTONE	SHALE
LIMESTONE	DOLOMITE	SLT. DOLOMITE	SLT. LIMESTONE	SLT. SHALE	SLT. SANDSTONE
CONGLOMERATE	GRAVEL	COBBLES	GRAVEL	COBBLES	GRAVEL
TRAP	TRAP	TRAP	TRAP	TRAP	TRAP

SYSTEM: QUATERNARY - HOLOCENE
 SERIES: PLEISTOCENE
 STAGE: NORDLAND GROUP
 GROUP: UPPER JURASSIC
 DEPOSITIONAL ENVIRONMENT: MARINE INNER SHELF



SUMMARY OF DRILLSTEM TESTS

TEST NO.	DEPTH (m RKB)	CHOKE	GAS RATE (m³/hr)	GAS GRAVITY (g/cc)	COND. COND. (m³)	COND. COND. (%)	COND. COND. (m³)	COND. COND. (%)	COND. COND. (m³)	COND. COND. (%)
1	2890-2900	1.500	1.200	1.800	0.100	0.100	0.100	0.100	0.100	0.100
2	2830-2850	1.500	1.200	1.800	0.100	0.100	0.100	0.100	0.100	0.100

FOR RFT RESULTS SEE THE COMPLETION REPORT