

A/S Norske Shell, E & P
COMPLETION LOG WELL: 31/2-8

LOCATION MAP
 SCALE: 1:50,000
 COORDINATES: N 69° 57' 33.019" E 09° 29' 49.841"
 SPUD DATE: 16. 06. 1982
 COMPLETION DATE: 18. 08. 1982
 RIG: BORJUNY DOLPHIN
 CONTRACTOR: DOLPHIN SERVICES A/S

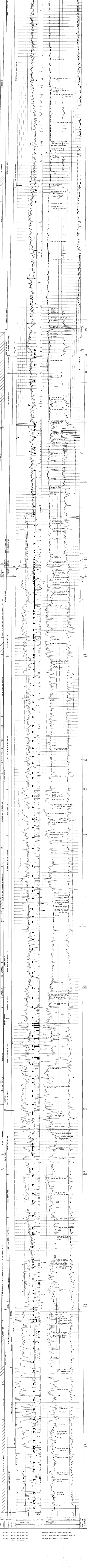
WELL LOGGING CONTRACTOR: GEOSERVICES
SHELL GEOLOGIST: P. IMMERZ, O. NORVIK, K. ABRAHAMSEN
STATUS: PLUGGED AND ABANDONED.
CASING RECORD: 30" at 695 m, 20" at 826 m, 13 7/8" at 1724 m

LITHOLOGICAL SYMBOLS

CLAY	MARL
CLAYSTONE	CHALK
SLATE	LIMESTONE
SILT	DOLOMITE
SILTSTONE	SALT
SAND	CONCRETE
SANDSTONE	PUFF
LIMESTONE	FRAGILE GEL
CARBONACEOUS	
GRAVELLY	

HYDROCARBON INDICATORS
 WEAK OIL SHOWS, STRONG OIL SHOWS, WEAK GAS SHOWS, STRONG GAS SHOWS, PROVED PRODUCTIVE, UNPROVED PRODUCTIVE

LOG NO.	DATE	MEASURED	WELL	RESISTIVITY	INTERVAL TRANSIT TIME	HYDROCARBON
31/2-8	18.08.1982	33802	33802	2000	2000	2000



CORE No. 1: 1841.5m - 1851.5m Rec: 90%
 CORE No. 2: 1851.5m - 1888.5m Rec: 90%
 CORE No. 3: 1870.0m - 1888.5m Rec: 90%
 Top core 3 depth adjusted

BSL (pressure gradient): 1845 - 3360 = 0.45 (psi/ft) (approx)
 DST (1843 - 1850): recovered 32 bbl of water and traces of oil
 BTL (sample 049): recovered water 1.00 cc oil