



statoil / NORSK HYDRO / SAGA / PHILLIPS /
TEXACO / TOTAL

7120/7-1 COMPLETION LOG
Scale 1:500

REGISTRERT
OLJEDIREKTORATET

COORDINATES: 71° 18' 36,29" N
20° 11' 22,21" E

K.B.: 25m

WATER DEPTH: 233,5m

TOTAL DEPTH: 2839,5m

DEEPEST FORM. PEN.: UPPER TRIASSIC

SPUD DATE: 31 JULY, 1982

RIG RELEASE DATE: 10 OCTOBER, 1982

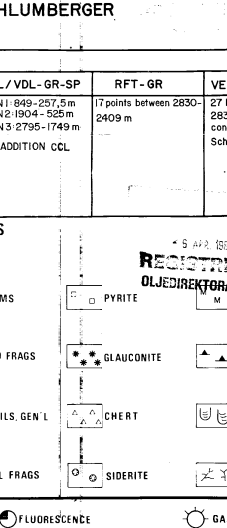
WELL STATUS: PLUGGED AND ABANDONED. GAS DISCOVERY.

RIG: NEPTUNO NORDRAUG

CONTRACTOR: ROSS DORLING A/S

GEOLOGISTS: P. CLINT, S. BJERKENES, K. PEDERSEN

PREPARED BY: M. ASLÅGSEN DATE: 28 FEB 1983



CASING DATA: 30" at 319 m KB
20" at 365,5 m KB
13 1/2" at 849 m KB
9 1/2" at 1904 m KB
7" liner at 2838 m KB

FORMATION INTEGRITY TEST: 1.15 g/cc
1.48 g/cc
1.71 g/cc

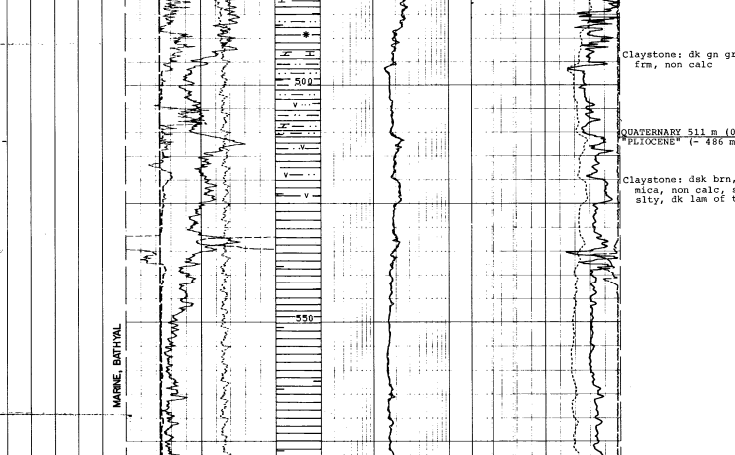
VELOCITY SURVEY: 27 LEVELS BETWEEN 2839 - 340m CONDUCTED BY SCHLUMBERGER

LOGS RUN

GR-SP-CAL	LDT-GR-CAL	LOT/CNL	HDT	CBL/VOL-GR-SP	RFT-GR	VELOCITY SURVEY
RUN 1 882-752 m (CAL TO 900 m)	RUN 1 882-752 m	RUN 1 882-752 m (CNL TO 900 m)	RUN 1 882-752 m	RUN 1 882-752 m	RUN 1 882-752 m	27 levels between 2839 - 340 m
RUN 2 882-752-849 m (CAL TO 900 m)	RUN 2 882-752-849 m	RUN 2 882-752-849 m (CNL TO 900 m)	RUN 2 882-752-849 m	RUN 2 882-752-849 m	RUN 2 882-752-849 m	2839 - 340 m conducted by Schlumberger
RUN 3 1904-1904 m	RUN 3 1904-1904 m	RUN 3 1904-1904 m	RUN 3 1904-1904 m	RUN 3 1904-1904 m	RUN 3 1904-1904 m	
RUN 4 2492-1904 m	RUN 4 2492-1904 m	RUN 4 2492-1904 m	RUN 4 2492-1904 m	RUN 4 2492-1904 m	RUN 4 2492-1904 m	
RUN 5 2840-2492 m	RUN 5 2840-2492 m	RUN 5 2840-2492 m	RUN 5 2840-2492 m	RUN 5 2840-2492 m	RUN 5 2840-2492 m	

LITHOLOGIC SYMBOLS

Symbol	Description
□	SAND SANDSTONE
▨	SILT SANDSTONE
▩	CLAY SANDSTONE
■	SHALE
▧	IMESTONE
▦	CHALK
▥	DOLOMITE
▤	MARL
▣	ANHYDRITE
▢	COAL LITE
□	OFF
■	HYDROCARBON CUT
▟	FOSSILS GSKL
▞	SALT
▝	SMELL FRAGS
▜	WOOD FRAGS
▛	GLAUCONITE
▚	CHERT
▙	SIDERITE
▘	STYLOLITES
▗	BURROWS
▖	FRACTURES



REGISTRERT OLJEDIREKTORATET

SEA FLOOR (233m)

DEPTH S RKB

25m Mean Sea level

REGISTRERT OLJEDIREKTORATET

FORMATIONAL ENVIRONMENT

REGISTRERT OLJEDIREKTORATET

REGISTRERT OLJEDIREKTORATET

FORMATIONAL ENVIRONMENT

REGISTRERT OLJEDIREKTORATET

REGISTRERT OLJEDIREKTORATET

FORMATIONAL ENVIRONMENT

REGISTRERT OLJEDIREKTORATET

REGISTRERT OLJEDIREKTORATET

FORMATIONAL ENVIRONMENT

REGISTRERT OLJEDIREKTORATET

REGISTRERT OLJEDIREKTORATET

FORMATIONAL ENVIRONMENT

REGISTRERT OLJEDIREKTORATET

REGISTRERT OLJEDIREKTORATET

FORMATIONAL ENVIRONMENT

REGISTRERT OLJEDIREKTORATET

REGISTRERT OLJEDIREKTORATET

FORMATIONAL ENVIRONMENT

REGISTRERT OLJEDIREKTORATET

REGISTRERT OLJEDIREKTORATET

FORMATIONAL ENVIRONMENT

REGISTRERT OLJEDIREKTORATET

REGISTRERT OLJEDIREKTORATET

FORMATIONAL ENVIRONMENT

REGISTRERT OLJEDIREKTORATET

REGISTRERT OLJEDIREKTORATET

FORMATIONAL ENVIRONMENT

REGISTRERT OLJEDIREKTORATET

REGISTRERT OLJEDIREKTORATET

FORMATIONAL ENVIRONMENT

REGISTRERT OLJEDIREKTORATET

REGISTRERT OLJEDIREKTORATET

FORMATIONAL ENVIRONMENT

REGISTRERT OLJEDIREKTORATET

REGISTRERT OLJEDIREKTORATET

FORMATIONAL ENVIRONMENT

REGISTRERT OLJEDIREKTORATET

REGISTRERT OLJEDIREKTORATET

FORMATIONAL ENVIRONMENT

REGISTRERT OLJEDIREKTORATET

REGISTRERT OLJEDIREKTORATET

FORMATIONAL ENVIRONMENT

REGISTRERT OLJEDIREKTORATET

REGISTRERT OLJEDIREKTORATET

FORMATIONAL ENVIRONMENT

REGISTRERT OLJEDIREKTORATET

REGISTRERT OLJEDIREKTORATET

FORMATIONAL ENVIRONMENT

REGISTRERT OLJEDIREKTORATET

REGISTRERT OLJEDIREKTORATET

FORMATIONAL ENVIRONMENT

REGISTRERT OLJEDIREKTORATET

REGISTRERT OLJEDIREKTORATET

FORMATIONAL ENVIRONMENT

REGISTRERT OLJEDIREKTORATET

REGISTRERT OLJEDIREKTORATET

FORMATIONAL ENVIRONMENT

REGISTRERT OLJEDIREKTORATET

REGISTRERT OLJEDIREKTORATET

FORMATIONAL ENVIRONMENT

REGISTRERT OLJEDIREKTORATET

REGISTRERT OLJEDIREKTORATET

FORMATIONAL ENVIRONMENT

REGISTRERT OLJEDIREKTORATET

REGISTRERT OLJEDIREKTORATET

FORMATIONAL ENVIRONMENT

REGISTRERT OLJEDIREKTORATET

REGISTRERT OLJEDIREKTORATET

FORMATIONAL ENVIRONMENT

REGISTRERT OLJEDIREKTORATET

FOR FURTHER RESULTS AND TEST SUMMARY SEE COMPLETION REPORT