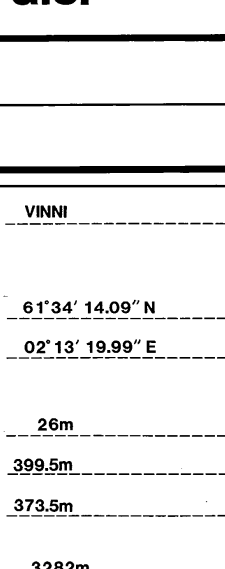
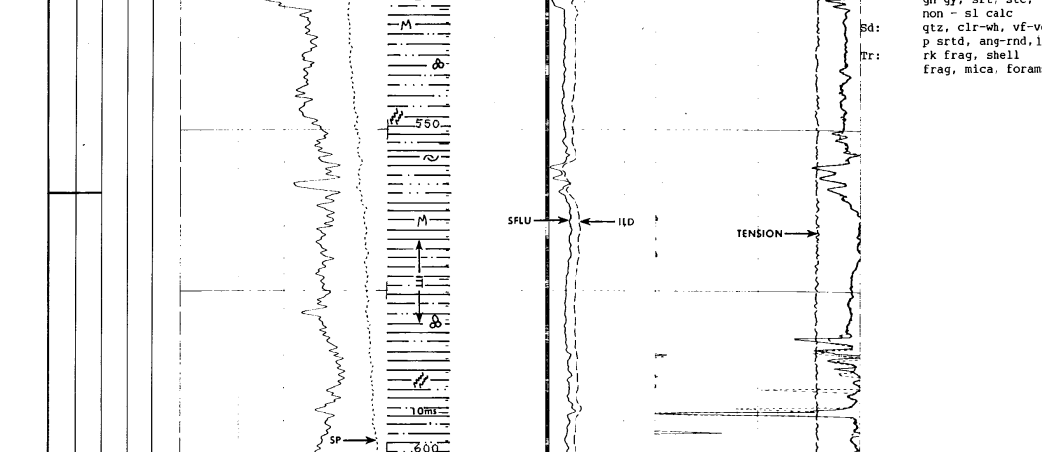


STATOIL / DEMINEX / AMOCO
 AMARADA / TEXAS EASTERN
Saga Petroleum a.s.
 2307 005
REGIS FRET
 OLJEMONTORJERET


Composite Well Log
 Well 3474-6

SCALING COUNT : 1400	LOG LOCATION : VNN
AREA TAMSEN SRIR	COORDINATES LATITUDE : 61°34' 14.09" N
OPERATOR SAGA PETROLEUM a.s.	LONGITUDE LONGITUDE : 02°13' 19.99" E
CEILING 057	ELEVATIONS RKB-MEAN SEA LEVEL : 26m
RIG TAKEN OVER BY THE LICENSE DECEMBER 28, 1985	RKB-SEA FLOOR RKB-SEA FLOOR : 399.5m
DATE SPUDDED MARCH 3, 1986	WATER DEPTH WATER DEPTH : 373.5m
T.D. DATE MARCH 3, 1986	TOTAL DEPTH TOTAL DEPTH : 3282m
RIG RELEASED P & A as an OIL WELL	logger's depth logger's depth : 3282m
COMPLETION STATUS: P & A as an OIL WELL	

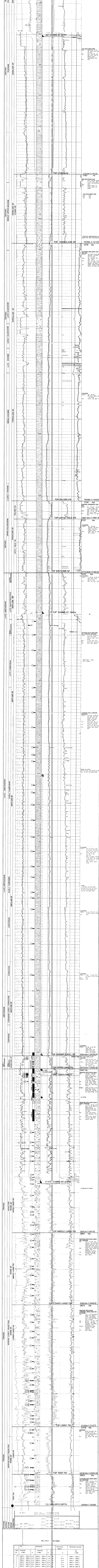
DRILLING CONTRACTOR MØNSSEN (SINTEG A/S)	WELL LOGGING SERVICES AMADRELL SCHLUMBERGER	WIRELINE LOGS SCHLUMBERGER INLAND SERVICES, INC.
CASING SHOE (HOLE) 30" : 521 20" : 904 13 3/8" : 1841 9 5/8" : 2760	HOLE SIZE INTERVALS (m-FS) 36" : 530 26" (17 1/2") : 530-920 17 1/2" : 920-1856 12 1/4" : 1856-2770 8 1/2" : 2770-3282	



AUTHOR: U.M. STENSTAVOLD APPR. B.A. GURTAVERN DRAFTED BY: R.H. KJUNSTAD DATE: JULY 1986

GEOLOGICAL SYMBOLS CLAY, SAND, SILTSTONE, LIMESTONE, SHALE, SANDSTONE, CONGLOMERATE	LITHOPREFIXES CALCAREOUS, COCCONIC, ANOMALOUS, VOLCANIC, GNEISS, GNEISS/SLATE	FOSSILS FORAMINIFERA, SHELL DEBRIS, MACROFOSSILS, FOSSIL POTENTIAL
WELL LOG SYMBOLS SCREWDRILL CORE, CORE, NO RECOVERY, RFT	LOG SCALES GRANULAR FLUORESCENCE, OIL FLUORESCENCE AND CUT, GAS OIL LOGS	DESCRIPTION AND REMARKS CASING SHOE, DRILL STEM TEST

LOG SCALES	LITH	LOG SCALES	DESCRIPTION AND REMARKS
GRANULAR FLUORESCENCE (GFL) (0-100)	100000	GRANULAR FLUORESCENCE (GFL) (0-100)	0.0000
OIL FLUORESCENCE AND CUT (OFAC) (0-100)	100000	OIL FLUORESCENCE AND CUT (OFAC) (0-100)	0.0000
GAS OIL LOGS (GOL) (0-100)	100000	GAS OIL LOGS (GOL) (0-100)	0.0000



DATE	INTERVAL	PROCESSED	CONVERSION	RECORDED INTERVAL
NO.	FROM	TO	PERCENT	
1	2840.0 - 2840.0	11.0	8	2840.0 - 2853.3
2	2853.3 - 2853.3	11.0	8	2853.3 - 2866.6
3	2866.6 - 2866.6	11.0	8	2866.6 - 2880.0
4	2880.0 - 2880.0	11.0	8	2880.0 - 2893.3
5	2893.3 - 2893.3	11.0	8	2893.3 - 2906.6
6	2906.6 - 2906.6	11.0	8	2906.6 - 2920.0
7	2920.0 - 2920.0	11.0	8	2920.0 - 2933.3
8	2933.3 - 2933.3	11.0	8	2933.3 - 2946.6
9	2946.6 - 2946.6	11.0	8	2946.6 - 2960.0
10	2960.0 - 2960.0	11.0	8	2960.0 - 2973.3

DATE	INTERVAL	PROCESSED	CONVERSION	RECORDED INTERVAL
NO.	FROM	TO	PERCENT	
1	2973.3 - 2973.3	11.0	8	2973.3 - 2986.6
2	2986.6 - 2986.6	11.0	8	2986.6 - 3000.0
3	3000.0 - 3000.0	11.0	8	3000.0 - 3013.3
4	3013.3 - 3013.3	11.0	8	3013.3 - 3026.6
5	3026.6 - 3026.6	11.0	8	3026.6 - 3040.0
6	3040.0 - 3040.0	11.0	8	3040.0 - 3053.3
7	3053.3 - 3053.3	11.0	8	3053.3 - 3066.6
8	3066.6 - 3066.6	11.0	8	3066.6 - 3080.0
9	3080.0 - 3080.0	11.0	8	3080.0 - 3093.3
10	3093.3 - 3093.3	11.0	8	3093.3 - 3106.6