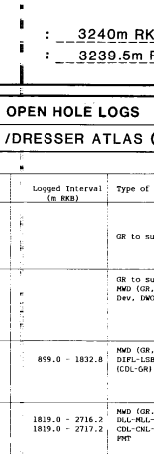


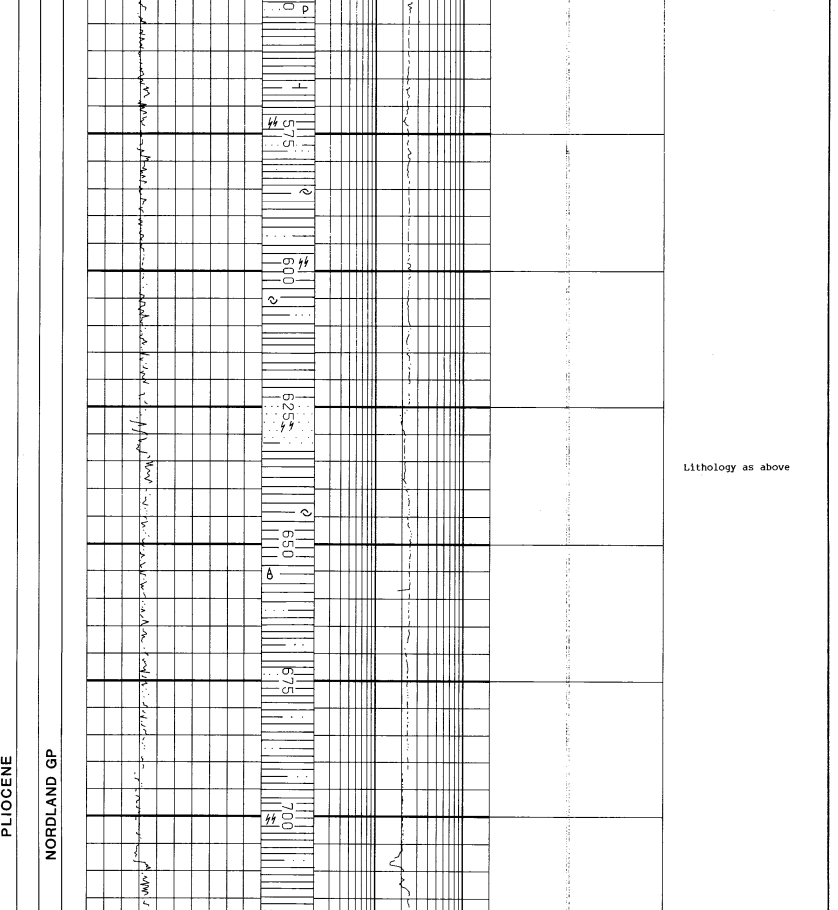
ESSO / STATOIL / NORSK HYDRO /
 ELF / DEMINEX / DNO



Saga Petroleum a.s.
 Composite Well Log
 Well 34/7-9

SCALE: 1:500	RIG: TREASURE SAGA
COUNTRY: NORWAY	LOCATION: TAMPEN SPUR
AREA: TAMPEN SPUR	COORDINATES: 6°13'N 18°19'E
OPERATOR: SAGA PETROLEUM A.S.	LATITUDE: 61°11'43.80"E
LICENCE: P. 089	LONGITUDE: 6°17'43.10"E
RIG TAKEN OVER BY THE LICENSE: APRIL 12TH 1986	UTM COORDINATES: 457 105 9m E
DATE SPUNDED: APRIL 13TH 1986	ELEVATIONS: 3240m RKB
T.D. DATE: MAY 19TH 1986	RKB-MEAN SEA LEVEL: 26m
RIG RELEASED: JUNE 12TH 1986	WATER DEPTH: 330m
COMPLETION STATUS: P & A AS IN OIL WELL	TOTAL DEPTH: 3240m RKB
	logger's depth: 3239.5m RKB

DRILLING CONTRACTOR	WILHELMSEN	MPELOGGING SERVICE	EXPLORATION LOGGING	OPER-HOLE LOGS
CASING SHOE (LWD)	465	30"	96"	356-471
20"	859	26 (17 1/2")	471-915	
13 3/8"	1821	17 1/2"	915-1937	
9 5/8"	2803	12 1/4"	1937-3240	



WELL LOG SYMBOLS	LOG SCALES	LOG SCALES	LOG SCALES
SEGMENT CORE	MWD DOWN TO 20" CASING SHOE (LSSm)	GR	RSN
SEGMENT CORE NO RECOVERY	WIRELINE LOSS FROM 20" CASING SHOE (959m)	GR	RSN
SEGMENT CORE NO RECOVERY		GR	RSN

