

PROGNOSIS
APPRAISAL WELL 31/2-K

SCALE 1: 5 000

COORDINATES LAT: 60° 50' 00"
ELEVATION OF: 25m
RIG: BORGNY DOLPHIN
WATER DEPTH: 341m
TOTAL DEPTH: 1700m ss
SPUDED:
COMPLETED:
TYPE COMPL: (1725 m bdf)

LITHO-
STAGIRAPHY
LIT

DEPTH IN METRES
SUBSEA

TIME STRATIGRAPHY

LITHOLOGY - INDICATIONS - TEST RESULTS

REMARKS - TEST RESULTS

SEA BED 341m ss (36m bdf) ± 2

500m ss (525m bdf) ± 5

740 m ss (765m bdf) ± 5

MAX THROW 10m
FAULT 1010m ss (1035m bdf) ± 10

1095m ss (1120 m bdf) ± 5

1290m ss (1315 m bdf) ± 5

1325m ss (1350 m bdf) ± 5

1370m ss (1395 m bdf) ± 5

1480 m ss (1505m bdf) ± 10

1505m ss (1530m bdf) ± 5

1540m ss (1565 m bdf) ± 10

1595m ss (1610 m bdf) ± 10

1655m ss (1680m bdf)

TD 1700m ss (1725m bdf)

SOGN FM

HEATHER FM

FENS FM

ROGALAND GROUP

BALDER FM
SELE FM
LISTA FM

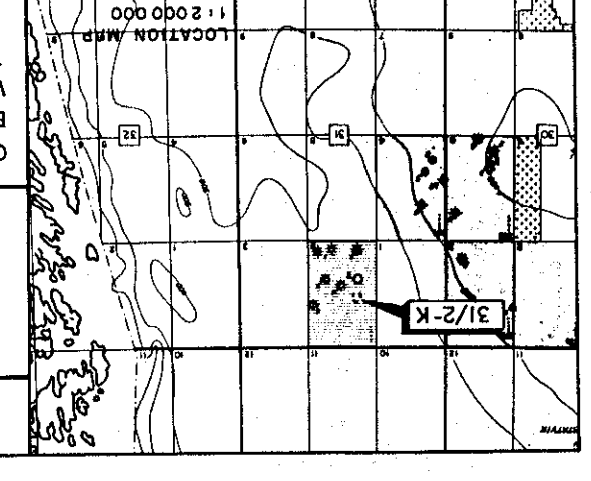
HORDALAND GROUP

NORDLAND GROUP

HUMBER GROUP

ZONE 1
ZONE 2

CORE



DEPTH IN METRES
SUBSEA

TIME STRATIGRAPHY

LITHOLOGY - INDICATIONS - TEST RESULTS

REMARKS - TEST RESULTS

SEA BED 341m ss (36m bdf) ± 2

500m ss (525m bdf) ± 5

740 m ss (765m bdf) ± 5

MAX THROW 10m
FAULT 1010m ss (1035m bdf) ± 10

1095m ss (1120 m bdf) ± 5

1290m ss (1315 m bdf) ± 5

1325m ss (1350 m bdf) ± 5

1370m ss (1395 m bdf) ± 5

1480 m ss (1505m bdf) ± 10

1505m ss (1530m bdf) ± 5

1540m ss (1565 m bdf) ± 10

1595m ss (1610 m bdf) ± 10

1655m ss (1680m bdf)

TD 1700m ss (1725m bdf)

SOGN FM

HEATHER FM

FENS FM

ROGALAND GROUP

BALDER FM
SELE FM
LISTA FM

HORDALAND GROUP

NORDLAND GROUP

HUMBER GROUP

ZONE 1
ZONE 2

CORE

DEPTH IN METRES
SUBSEA

TIME STRATIGRAPHY

LITHOLOGY - INDICATIONS - TEST RESULTS

REMARKS - TEST RESULTS

SEA BED 341m ss (36m bdf) ± 2

500m ss (525m bdf) ± 5

740 m ss (765m bdf) ± 5

MAX THROW 10m
FAULT 1010m ss (1035m bdf) ± 10

1095m ss (1120 m bdf) ± 5

1290m ss (1315 m bdf) ± 5

1325m ss (1350 m bdf) ± 5

1370m ss (1395 m bdf) ± 5

1480 m ss (1505m bdf) ± 10

1505m ss (1530m bdf) ± 5

1540m ss (1565 m bdf) ± 10

1595m ss (1610 m bdf) ± 10

1655m ss (1680m bdf)

TD 1700m ss (1725m bdf)

SOGN FM

HEATHER FM

FENS FM

ROGALAND GROUP

BALDER FM
SELE FM
LISTA FM

HORDALAND GROUP

NORDLAND GROUP

HUMBER GROUP

ZONE 1
ZONE 2

CORE

DEPTH IN METRES
SUBSEA

NE

LINE 79403

APPRAISAL WELL 31/2-K

PROGNOSIS

REMARKS - TEST RESULTS

LITHO-
STAGIRAPHY
LIT

DEPTH IN METRES
SUBSEA

TIME STRATIGRAPHY

LITHOLOGY - INDICATIONS - TEST RESULTS

REMARKS - TEST RESULTS

SEA BED 341m ss (36m bdf) ± 2

500m ss (525m bdf) ± 5

740 m ss (765m bdf) ± 5

MAX THROW 10m
FAULT 1010m ss (1035m bdf) ± 10

1095m ss (1120 m bdf) ± 5

1290m ss (1315 m bdf) ± 5

1325m ss (1350 m bdf) ± 5

1370m ss (1395 m bdf) ± 5

1480 m ss (1505m bdf) ± 10

1505m ss (1530m bdf) ± 5

1540m ss (1565 m bdf) ± 10

1595m ss (1610 m bdf) ± 10

1655m ss (1680m bdf)

TD 1700m ss (1725m bdf)

SOGN FM

HEATHER FM

FENS FM

ROGALAND GROUP

BALDER FM
SELE FM
LISTA FM

HORDALAND GROUP

NORDLAND GROUP

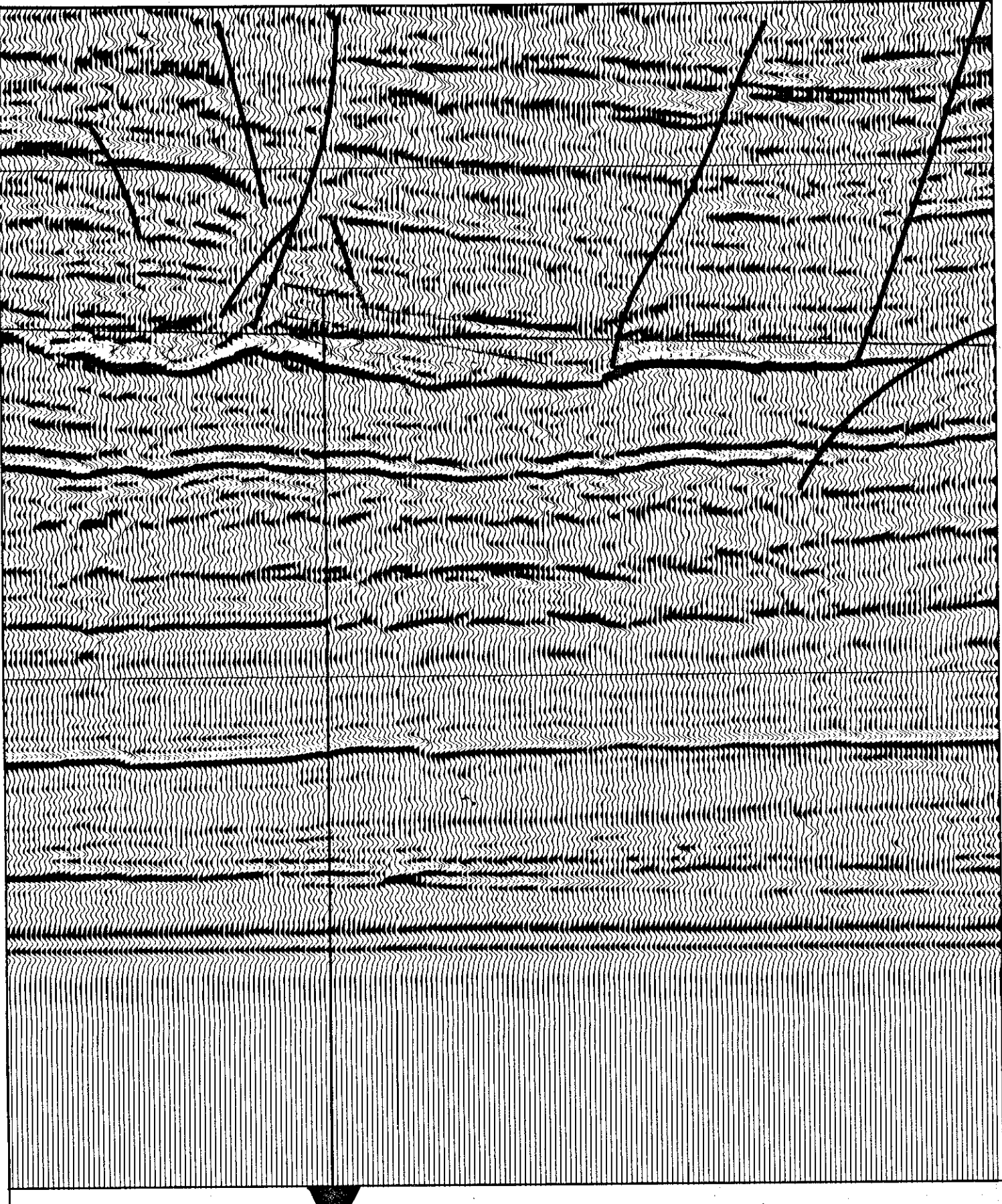
HUMBER GROUP

ZONE 1
ZONE 2

CORE

DEPTH IN METRES
SUBSEA

LOCATION OF APPRAISAL WELL 31/2-K
SHOWN ON TOP RESERVOIR (TOP ZONE 1 SAND)



3° 30'

60° 50'

2 K m

LINE 79403

31/2-K

31/2-K

31/2-K

31/2-K

31/2-K

31/2-K

31/2-K

31/2-K

31/2-K

31/2-K

31/2-K

31/2-K

31/2-K