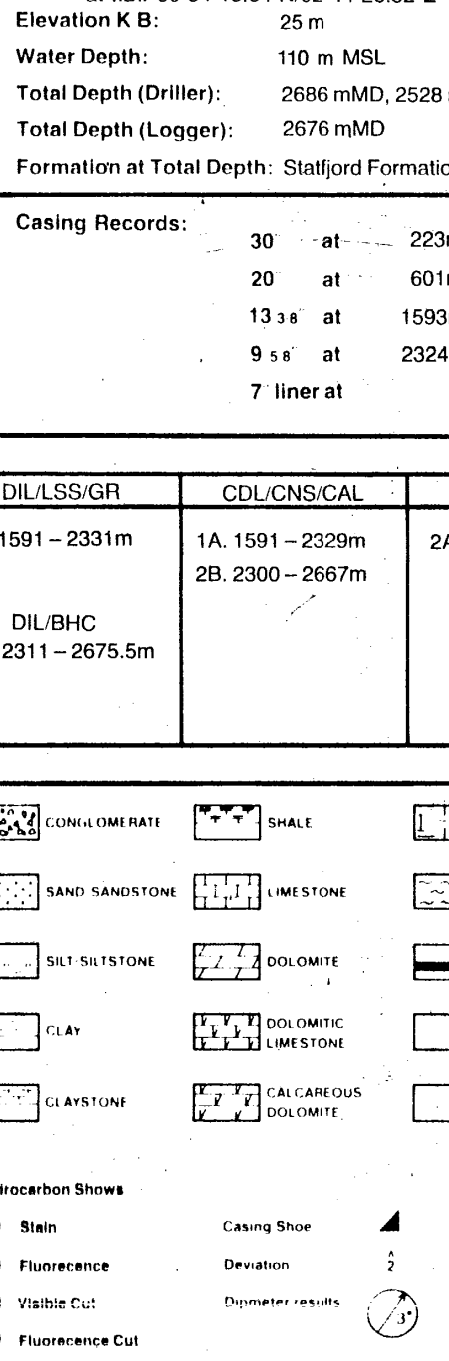


DIGITAL WIRELINE LOG PACKAGE 1994  
 This package may be used and reproduced without restriction.  
 SIMON PETROLEUM TECHNOLOGY

**COMPLETION LOG**

**Norsk Hydro** Bergen - Norway  
 1 JUNI 1998  
**RECSHIRT** REKTORATET  
**COMPLETION LOG** Scale 1:500  
**Well: 30/6-17A**  
**RECSHIRT** REKTORATET



Country: Norway  
 License: 052  
 Owners: Norsk Hydro/StatOil/Saga/Mobil/Elf/Total  
 Field: Oseberg  
 Kick off date: February 9th, 1986  
 Reached Total Depth: March 3rd, 1986  
 Completed: March 19th, 1986  
 Well Status: Plugged and abandoned  
 Gas encountered in the Cook Fm.  
 Rig: Tre Wilhelmer  
 Contractor: With Wilhelmer  
 Logging Company: Exploration Logging  
 Logging Company: GWS (Geo well services)  
 Geologists: K. Kalgraff, K. Kjærseth, M. Sæther, K. Rønning, D. Tanseth, M. Darka  
 Prepared by: N. Bang, P.A. Morkandri  
 Date: Sept. 86

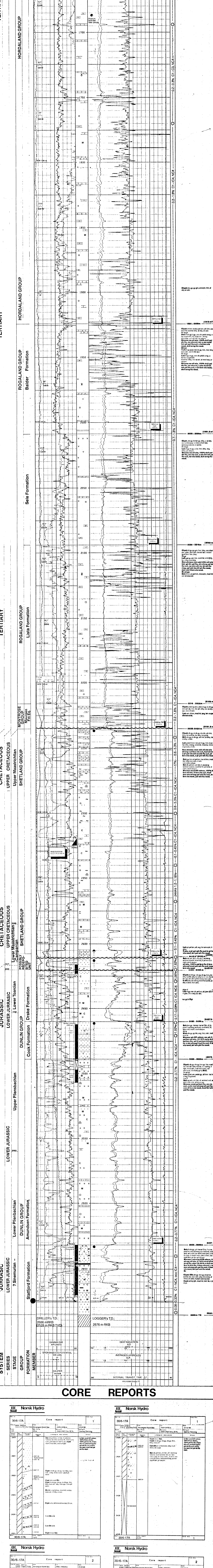
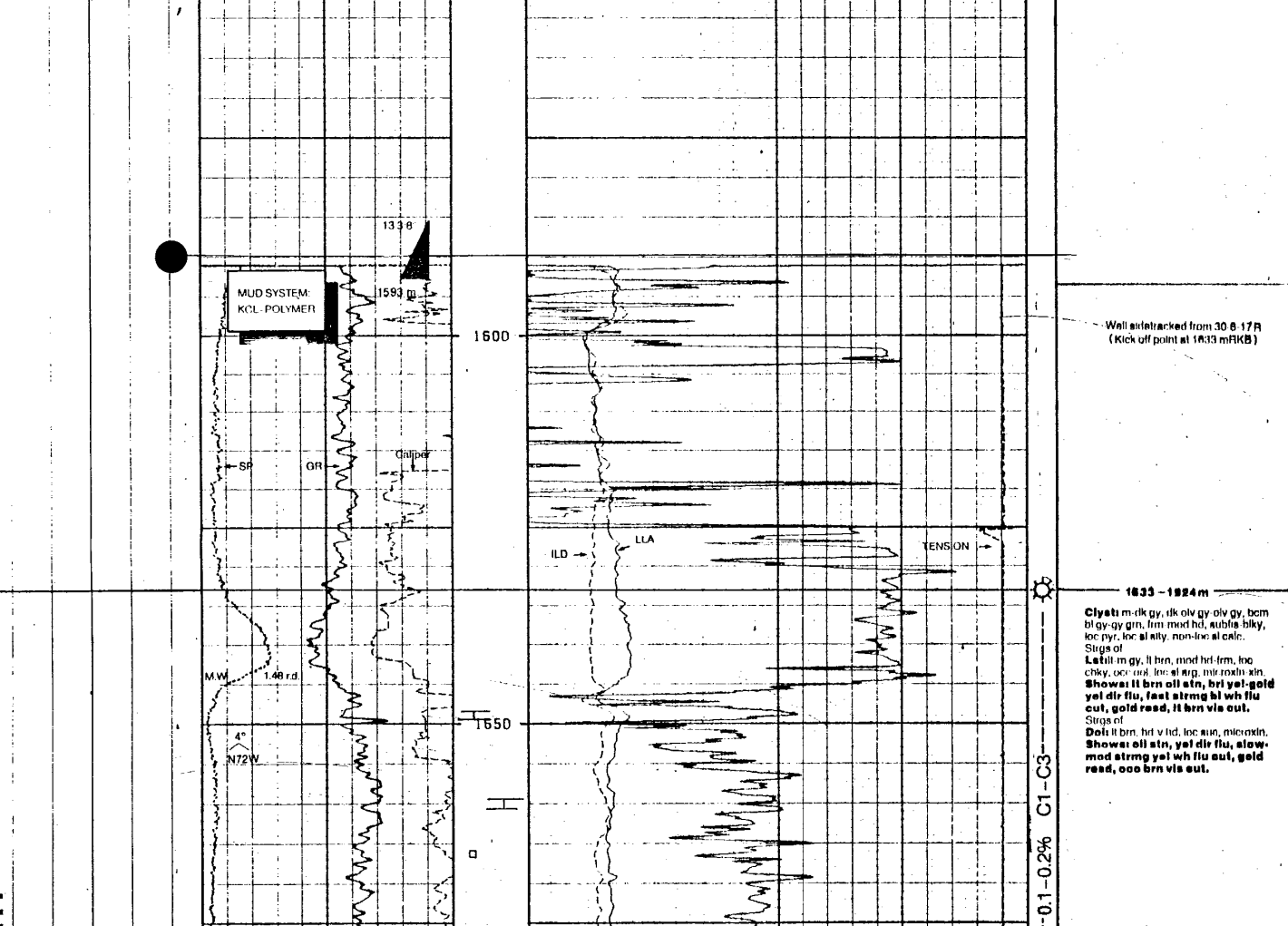
Coordinates: 60°34'15.77"N 02°44'59.94"E UTM: 6715 194 4mE  
 486 293.4mE  
 Elevation K.B.: 25 m  
 at T.D. 6715 192.5 mN  
 485 793.1 mE  
 Water Depth: 110 m MSL  
 Total Depth (Driller): 2686 mMD, 2528 mTVD  
 Total Depth (Logger): 2676 mMD  
 Formation at Total Depth: Stafford Formation

Casing Records:  
 30 at 223m  
 20 at 601m  
 13 x at 1593m  
 9 s at 2324m  
 7 liner at

Comments:  
 The well is sidetracked due west from 30/6-17 R from a kick off point at 1633 m RKB.

**Logs Run**

DIL/SS/GR	CDL/CNS/CAL	VSP	CBL/VDL/CCL	DLL/MSPL
1A. 1591 - 2331m	1A. 1591 - 2329m	2A. 1400 - 2396m	2A. 1500 - 2317 m	2A. 2316 - 2457 m
DIL BHC	2B. 2311 - 2675.5m			



**CORE REPORTS**

