

Denne rapport
tilhører



L&U DOK. SENTER

L. NR. 20084270162

KODE Well 31/2-10 nr 7

Returneres etter bruk

June 1983

RKER.83.085

GEOCHEMICAL INVESTIGATION OF THREE CORE SAMPLES AT
1577.7, 1585.0 AND 1590.0 M FROM WELL 31/2-10, NORWAY

by

J.M.A. Buiskool Toxopeus and J. Posthuma

Sponsor: Shell Forus EP

Code: 774.103



This **CONFIDENTIAL** report is made available subject to the condition that the recipient will use the information contained therein for his own business only and will not divulge it to third parties without the written authority of the sponsoring party.

KONINKLIJKE / SHELL EXPLORATIE EN PRODUKTIE LABORATORIUM
RIJSWIJK, THE NETHERLANDS

June 1983

RKER.83.085

GEOCHEMICAL INVESTIGATION OF THREE CORE SAMPLES AT
1577.7, 1585.0 AND 1590.0 M FROM WELL 31/2-10, NORWAY

by

J.M.A. Buiskool Toxopeus and J. Posthuma

Sponsor: Shell Forus EP

Code: 774.103

Investigation 9.5.4099

With cooperation from P. Lohbeck

This **CONFIDENTIAL** report is made available subject to the condition that the recipient will use the information contained therein for his own business only and will not divulge it to third parties without the written authority of the sponsoring party.

Copyright is vested in Shell Research B.V.

KONINKLIJKE/SHELL EXPLORATIE EN PRODUKTIE LABORATORIUM

RIJSWIJK, THE NETHERLANDS

(Shell Research B.V.)

CONTENTS

	<u>Page</u>
1. Results and Discussion	1
2. Conclusions	2
Tables 1-3	Geochemical data of rock extracts
Figures 1-5	Gas chromatograms of saturated hydrocarbons
6	C-15 and C30 ring distributions
7-8	Sterane and triterpane fragmentograms
9	Maceral analysis

GEOCHEMICAL INVESTIGATION OF THREE CORE SAMPLES AT
1577.7, 1585.0 AND 1590.0 M FROM WELL 31/2-10, NORWAY

1. RESULTS AND DISCUSSION

Geochemical analysis of the following three core samples from the Upper Jurassic Kimmeridge Clay Fm. of well 31/2-10, Norway, has been carried out:

1577.7 m

1585.0 m

1590.0 m

The results are shown in Tables 1-3 and in Figures 1-9. The results indicate the following:

1.1.

All three selected samples are fairly good to good source rocks for oil and gas (organic carbon contents; extract/carbon ratios; pyrolysis sniff values between 150 and 440 units; maceral analysis, Fig. 9; 'kerogenous' to 'mainly kerogenous' type of organic matter.

1.2.

The extracts of the samples are immature (gaschromatograms, Figs 1,3,4; sterane/triterpane fragmentograms, Figs. 7-8; grosscompositions).

All three samples were heated for further typing. However, the heating experiment for sample 1585.0 m failed and, since no material was left, no results are available.

1.3.

The shape of the gaschromatograms of the heated samples 1577.7 and 1590.0 m indicate the presence of structureless organic matter - SOM - (Figs. 2,5). The SOM is of bacterially reworked phytoplanktonic origin (C₂₇-C₂₉ distribution of the sterane fragmentograms, Figs. 7-8). No indication for a

significant amount of landplant derived organic matter could be detected. There is a large variation in sulphur contents in the original samples (9.0-18.9%). The significance of this variation is not known.

1.4.

Geochemically, the three extracts are very similar to each other and also very similar to three core extracts from well 31/2-2 (gaschromatograms; sterane/triterpane fragmentograms; gross compositions; carbon isotope values).

The difference in sterane distribution between the samples in wells 31/2-2 and 31/2-10 and the samples from wells 15/3-1, 24/9-1 and 2/11-1 is explained by maturity differences.

The extracts are similar to an average North sea crude oil with respect to their gaschromatograms and sterane distributions. The carbon isotope value of -29.8 to -30.0 ‰ (heated samples), however, are somewhat lighter compared to the mean for crude oils from blocks 30,31,34 and 35 (-29.0 ‰).

2. CONCLUSIONS

Three core samples from the Upper Jurassic Kimmeridge Clay Fm. of well 31/2-10, Norway, at 1577.7, 1585.0 and 1590.0 m are fairly good to good source rocks for oil and gas. The extracts of the samples are derived from predominantly structureless organic matter (bacterially reworked phytoplankton). No significant landplant contribution could be detected in the extracts.

Geochemically the three extracts are very similar to each other and also very similar to three core extracts from well 31/2-2. The extracts are of the same broad type of organic matter as that of an average North Sea crude oil. The carbon isotope values (-29.8 to -30.0 ‰), however, are slightly more negative compared to those of crude oils from blocks 30,31,34 and 35.

Table 1 - GEOCHEMICAL DATA OF EXTRACTS

	Norway 31/2-10 1577.7 m Core 1 Original	Norway 31/2-10 1577.7 m heated
% ethyl acetate extract	0.35	2.56
% organic carbon after ethyl acetate extraction	5.3	2.7
% sulphur	9.0	3.2
ppm V as metals	-	26
ppm Ni as metals	-	74
pristane/phytane	0.8	1.7
pristane/nC17	2.1	0.6
phytane/nC18	3.4	0.4
C ₁₅ distribution		
1-ring		
2-ring		
C ₃₀ distribution		
3-ring		
4-ring		
5-ring		
C ₂₉ DOM		
% saturates*	10	16
% aromatics	31	38
% heterocompounds	59	46
$\delta^{13}\text{C}^{\circ}/\text{oo}$	n.e.	-29.8
extract/carbon	0.07	0.95
extract/original carbon	-	0.48
% saturates per original organic carbon	0.66	7.73

*) determined by thin layer chromatography

n.e. = not enough sample material

Table 2 - GEOCHEMICAL DATA OF EXTRACTS

	Norway 31/2-10 1585.0 m Core 2 Original
% ethyl acetate extract	0.27
% organic carbon after ethyl acetate extraction	3.5
% sulphur	18.9
ppm V as metals	-
ppm Ni as metals	-
pristane/phytane	0.6
pristane/nC17	1.9
phytane/nC18	4.4
C ₁₅ distribution	
1-ring	
2-ring	
C ₃₀ distribution	
3-ring	
4-ring	
5-ring	
C ₂₉ DOM	
% saturates*	12
% aromatics	23
% heterocompounds	65
$\delta^{13}\text{C}^{\circ}/\text{oo}$	n.e.
extract/carbon	0.08
extract/original carbon	-
% saturates per original organic carbon	0.93

*) determined by thin layer chromatography

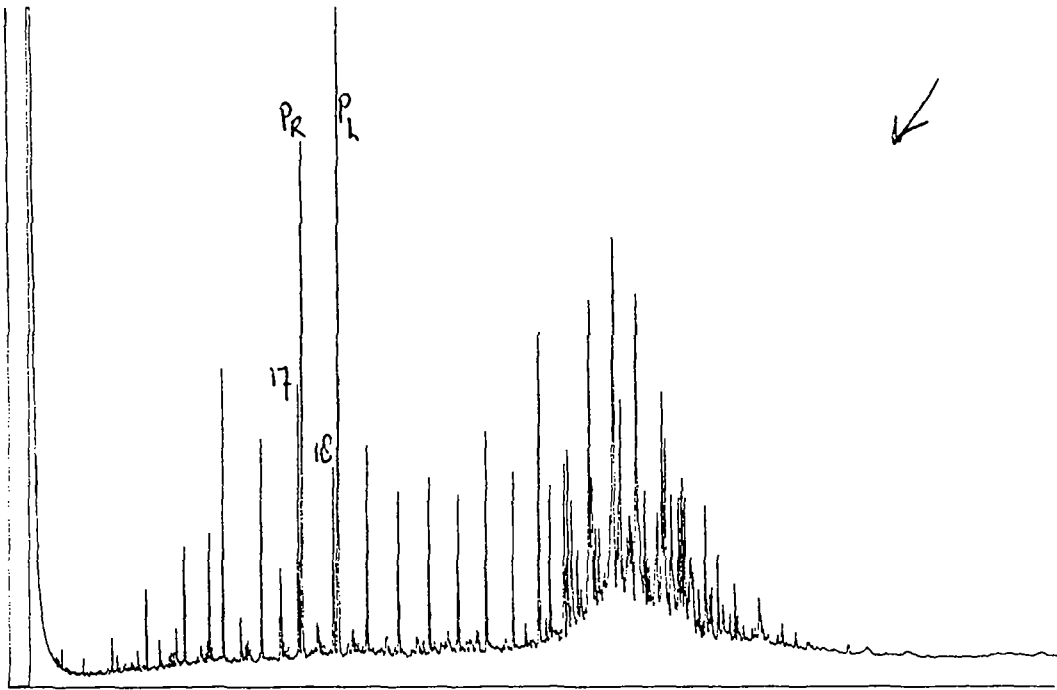
n.e. = not enough sample material

Table 3 - GEOCHEMICAL DATA OF EXTRACTS

	Norway 31/2-10 1590.0 m Core 2 Original	Norway 31/2-10 1590.0 m heated
% ethyl acetate extract	0.26	1.46
% organic carbon after ethyl acetate extraction	3.0	1.6
% sulphur	17.1	2.6
ppm V as metals	-	10
ppm Ni as metals	-	62
pristane/phytane	0.6	1.5
pristane/nC17	1.9	0.6
phytane/nC18	3.9	0.4
C ₁₅ distribution		
1-ring		
2-ring		
C ₃₀ distribution		
3-ring		
4-ring		
5-ring		
C ₂₉ DOM		
% saturates*	10	12
% aromatics	22	38
% heterocompounds	68	50
$\delta^{13}\text{C}^{\circ}/\text{oo}$	n.e.	-30.0
extract/carbon	0.09	0.91
extract/original carbon	-	0.49
% saturates per original organic carbon	0.87	5.84

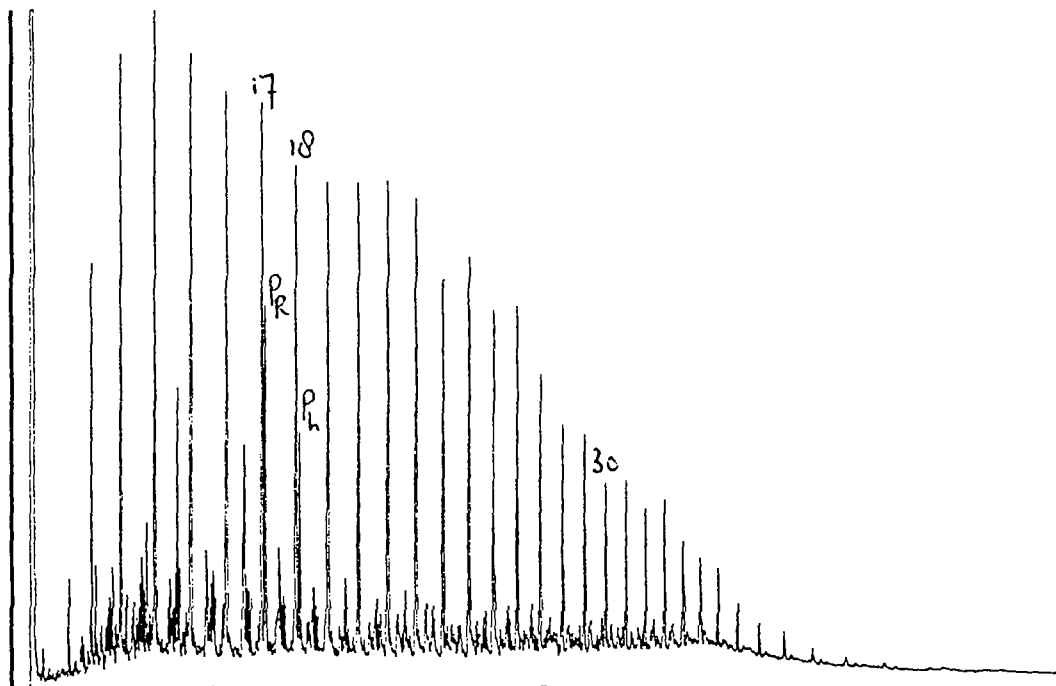
*) determined by thin layer chromatography

n.e. = not enough sample material



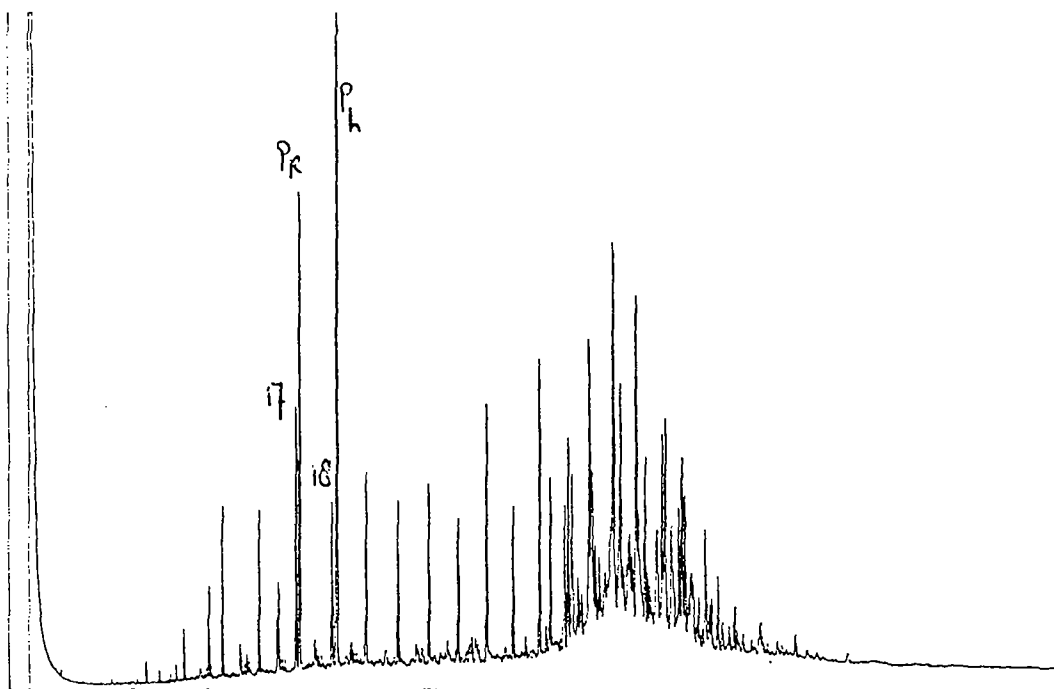
GAS CHROMATOGRAM OF SATURATED HYDROCARBONS

FIG. 1. NORWAY. 31/2-10 1577.7 M. CORE#1



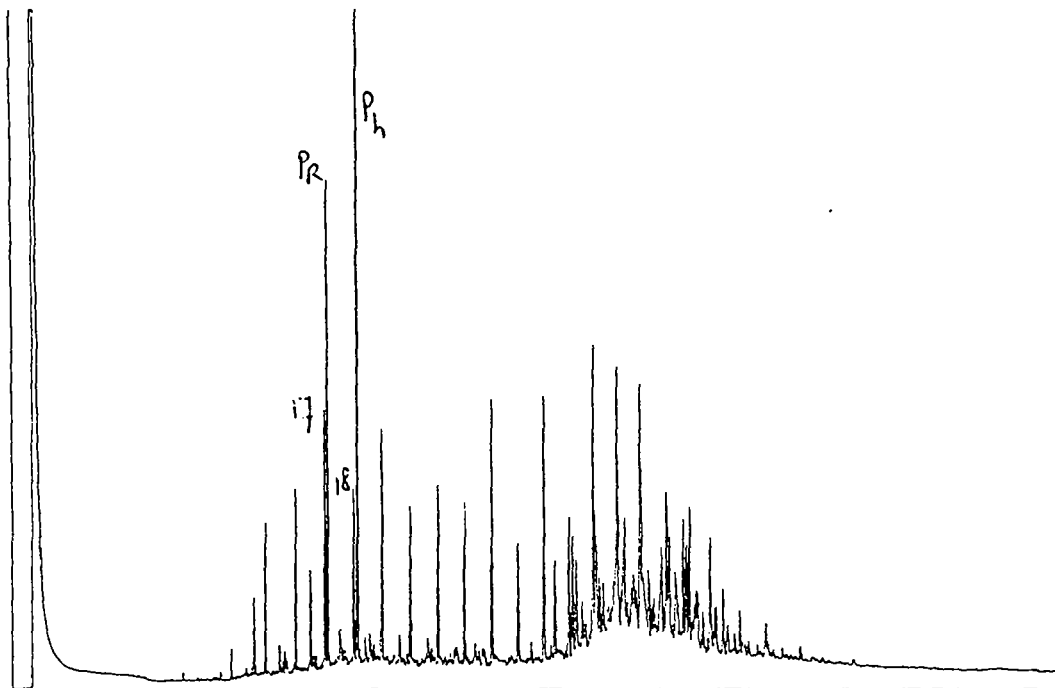
GAS CHROMATOGRAM OF SATURATED HYDROCARBONS

FIG. 2. NORWAY. 31/2-10. 1577.7 M CORE-1 **heated**



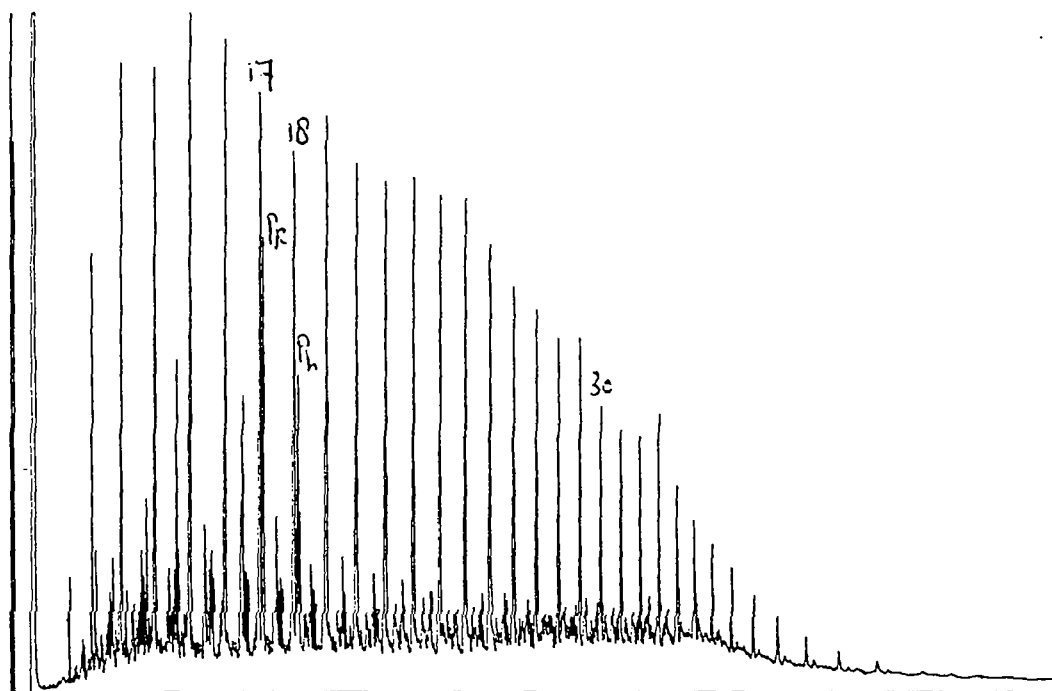
GAS CHROMATOGRAM OF SATURATED HYDROCARBONS

FIG. 3. NORWAY. 3 1/2-10 1585.0 M. CORE #2



GAS CHROMATOGRAM OF SATURATED HYDROCARBONS

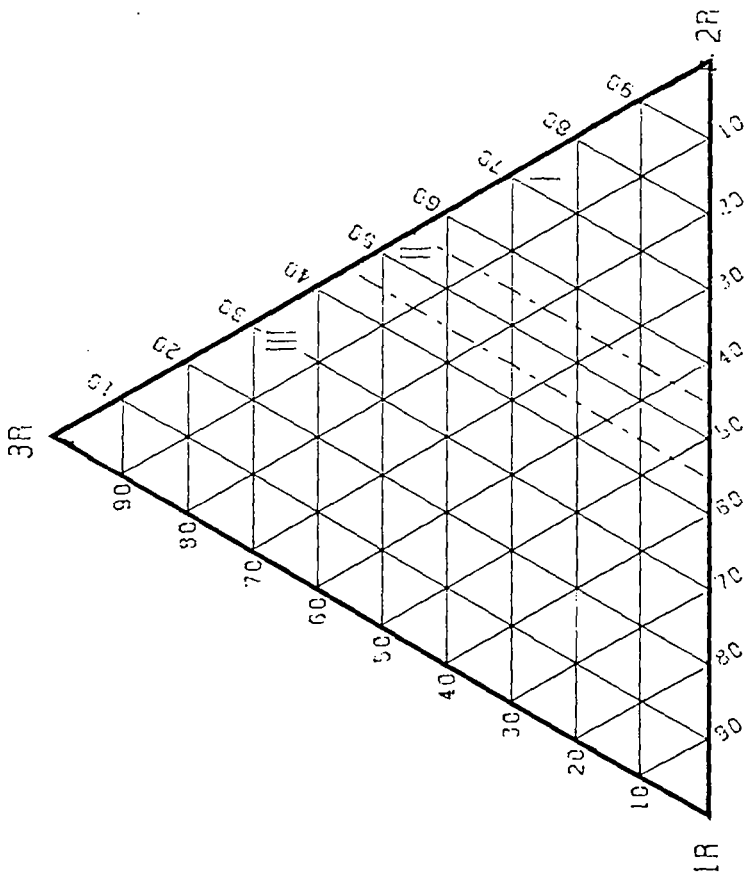
FIG. 4. NORWAY. 31/2-10 1590.0 M. CORE #2



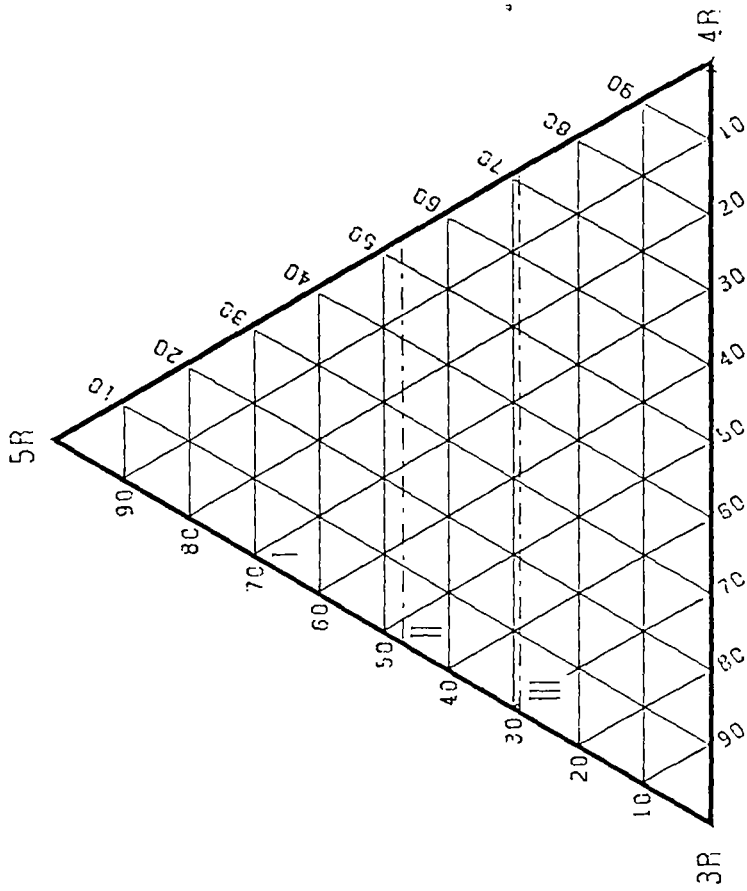
GAS CHROMATOGRAM OF SATURATED HYDROCARBONS

FIG. 5. NORWAY. 31/2-10 1590 M CORE-2 **heated**

C₁₅-RINGDISTRIBUTION



C₃₀-RINGDISTRIBUTION



I LANDPLANT-DERIVED CRUDES WITH SUBSTANTIAL RESIN CONTRIBUTION TO SOURCE MATTER

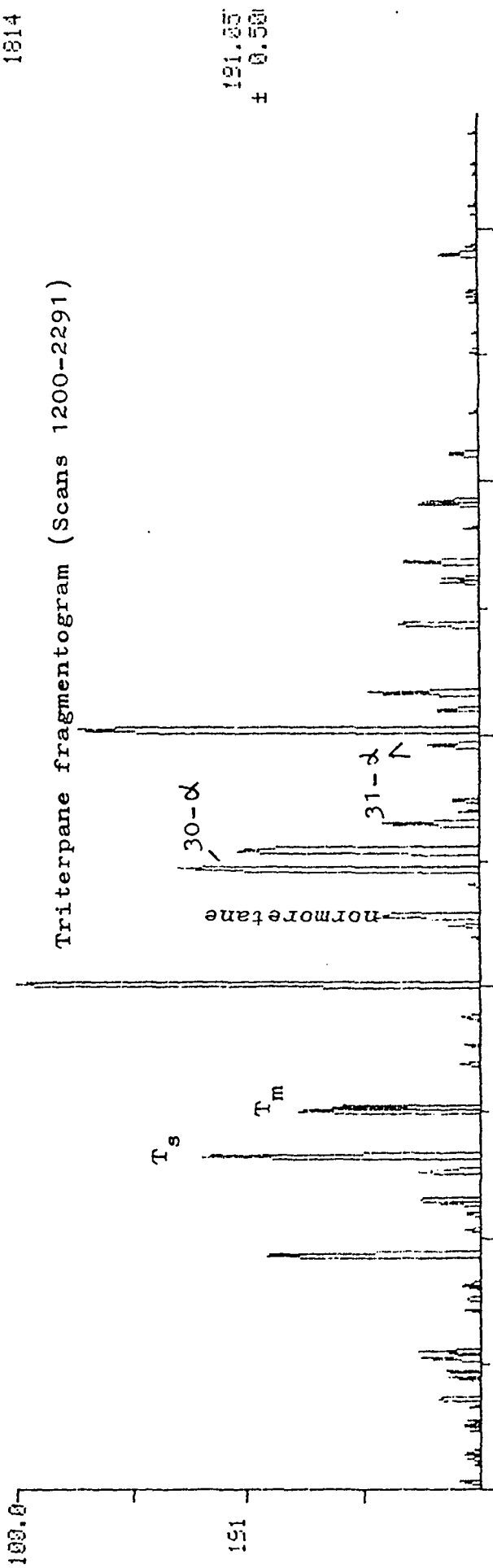
II CRUDES OF MIXED ORIGIN

III CRUDES DERIVED FROM SOM AND/OR ALGAL MATTER

I	LEGEND
II	
III	

FIG. 6

1814



7224

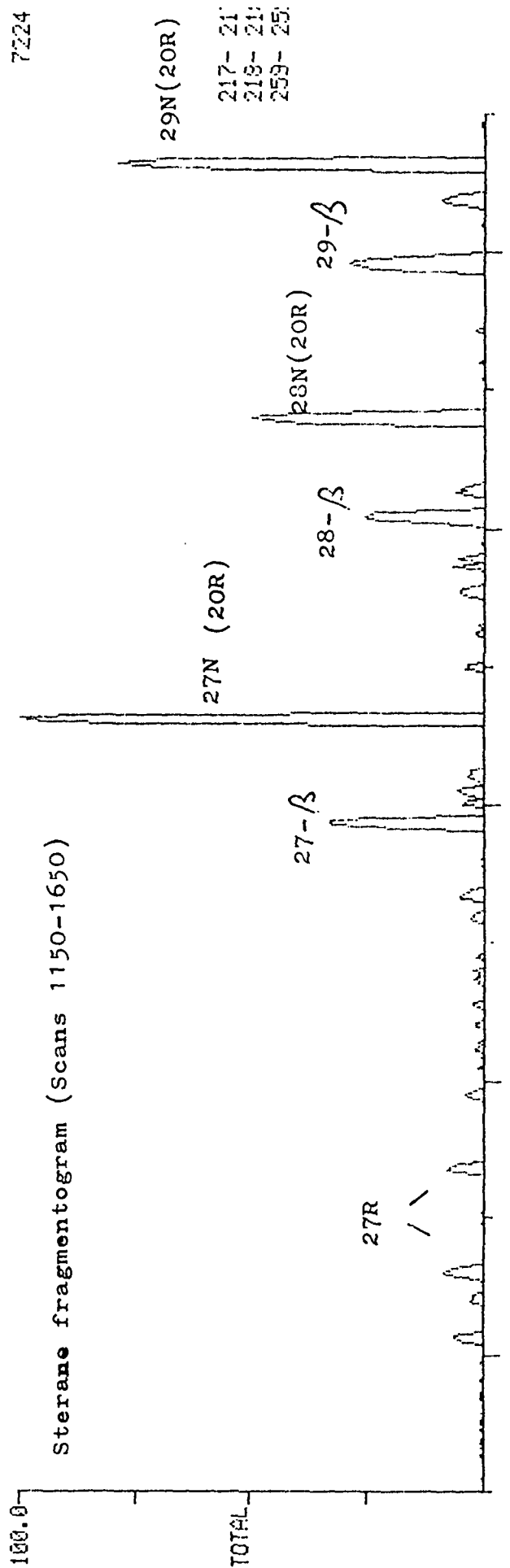
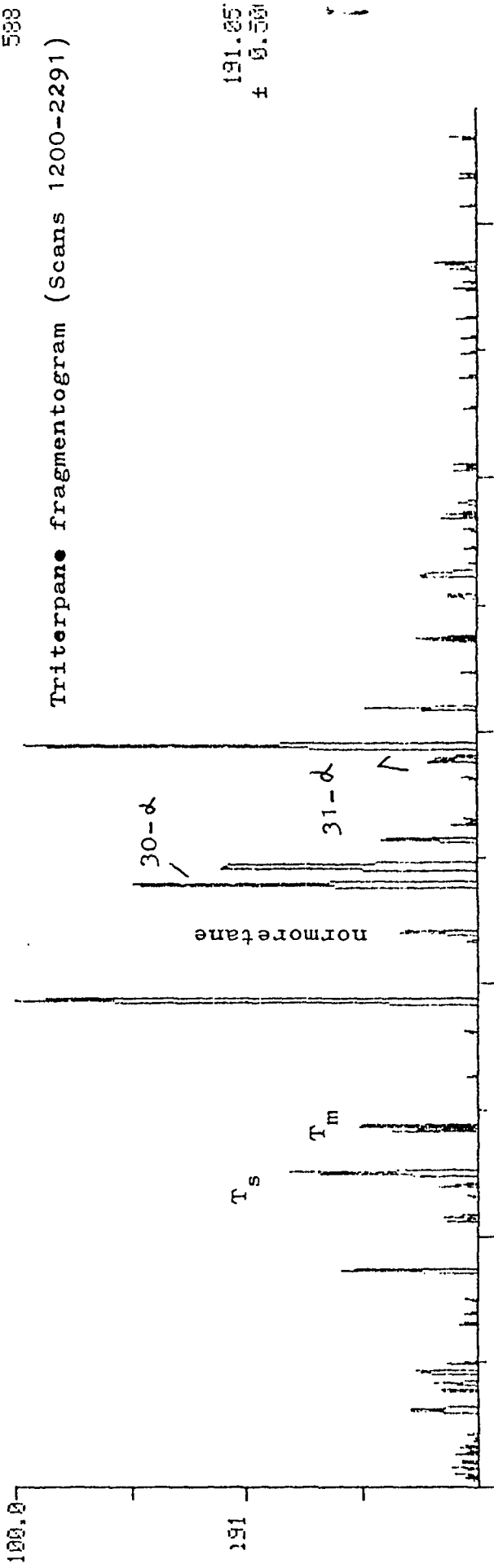


FIG. 7. GC-MS analysis 31/2-10, 1577.7 m.

Triterpane fragmentogram (Scans 1200-2291)



Sterane fragmentogram (Scans 1150-1650)

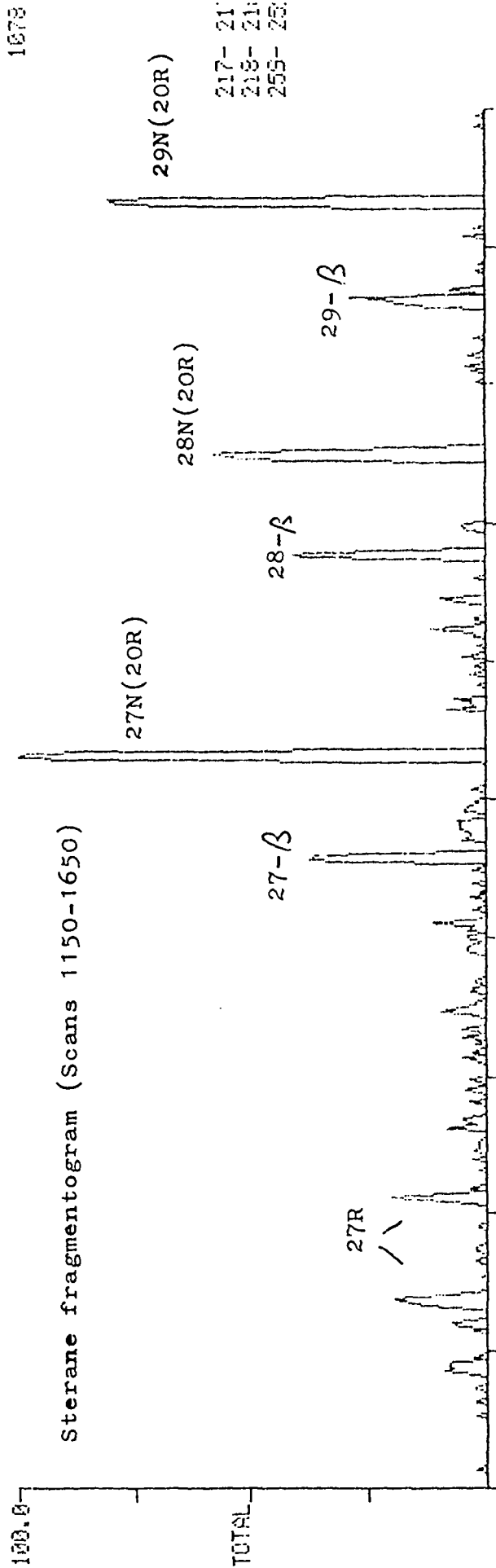


FIG. 8. GC-MS analysis 31/2-10, 1590 m.

MACERAL DESCRIPTION OF 14 SAMPLES FROM WELL 31/2-10, NORWAY

DEPTH IN M	SAMPLE TYPE
---------------	----------------

	ORGANIC											INORG.								
	VITG.		LIPTINITE						INERT.			UNDEFINED MINERALS	FRAGMENTAL PYRITE	AGGREGATES OF PYRITE	CRYSTALS OF PYRITE					
	SAPROPELIC ORG. MATTER	TELOCELLINITE	TELINITE	DESMACOLLINITE	SPORINITE	LUTINITE	RESINITE	LIPTODIARINITE	ALGAE		MICROFLAKKTON					EXUDOLINITE	SCLEROLINITE	FUSINITE	MACRINITE	MICRINITE
									BOTRYOCOCCUS	TASMANITES										

1575.7	CORE	+		-	/			+	/		+		-	+	*	+	/	-
1576.7	CORE	+		-	/			+	/		+		-	+	*	+	/	-
1577.7	CORE	+		-	/			+	/		+		-	/	*	/	/	-
1578.7	CORE	+		-	-			+	-		+		-	/	*	/	-	-
1579.8	CORE	+		/	/			+	/		+		-	/	*	/	-	-
1580.7	CORE	+		-	/			+	-		+		-	+	*	/	/	-
1585.0	CORE	/		/	-			+	-		+		-	-	*	/	-	-
1586.0	CORE	-		/	-			/	/		/		-	-	*	/	-	-
1586.9	CORE	/		/	-			+	-		/		-	-	*	/	/	-
1588.0	CORE	/		/	-			+	-		+		-	-	*	/	-	-
1589.0	CORE	/		/	-			/	-		/		/	-	*	/	/	-
1590.0	CORE	+		/	-			+	-		/		/	+	*	+	/	/
1590.9	CORE	+		-	-			+	-		/		-	+	*	+	+	/
1592.0	CORE	+		/	/			+	-		+		/	+	*	/	/	-

LEGEND	
*	: ABUNDANT
+	: COMMON
/	: FEW
-	: RARE

FIG. 9

INITIAL DISTRIBUTION

5 copies

3 copies

Shell Forus ep epxt/31

SIPM EP-11/13