



ESSO EXPLORATION & PRODUCTION
NORWAY INC.

WELL: 16/7-4

JANUARY 1983



GECO
 GEOPHYSICAL COMPANY
 OF NORWAY AS
 Petroleum Laboratory

FINAL REPORT

COMPANY: Esso
 WELL : 16/7-4
 FIELD : 16/7
 STATE : Norway

PAGE: 1

DATE: January 1983

CORE NO.: 1

Plug No.	Depth (meter)	Permeability (mD),		Porosity (%)	Pore saturation	Grain dens.	Formation Description
		horizontal Ka Kl	vertical Ka Kl				
1	2568.00	1273	33	26.1	0	2.65	Sst. Lt-brn. M-gr. Rn. Fr-cmt. w-srt. w/mic.
2	2568.14	235	89	28.1		2.68	A.A. F-gr. w/magn, dol.
3	2568.84	3.1	2.2	21.9		2.67	A.A.
4	2569.20	nmp	8.1	nmp	0		
5	2569.50	7.5	2.1	24.8		2.65	A.A.
6	2569.80	0.45	0.18	23.4		2.67	A.A. Brn. VF-gr.
7	2570.08	0.89	0.57	24.5	0	2.68	A.A.
8	2570.34	0.73	0.44	23.7		2.67	A.A.
9	2570.68	1.3	nmp	24.3		2.68	A.A.
10	2570.94	0.44	0.21	23.5	0	2.68	A.A.
11	2571.26	nmp	0.42	nmp			
12	2571.45	0.42	0.41	20.7		2.71	A.A.
13	2571.78	nmp	16	nmp	0		
14	2572.04	105	30	25.4		2.64	A.A. Lt-gy. F-gr.
15	2572.38	1696	740	25.3		2.68	A.A. M-gr.
16	2572.68	445	298	25.3	0	2.65	A.A.
17	2573.04	382	603	25.3		2.65	A.A.
18	2573.25	189	1.2	22.3		2.65	A.A.
	2573.40		0.83				

9



GECO
 GEOPHYSICAL COMPANY
 OF NORWAY AS
 Petroleum laboratory

FINAL REPORT

COMPANY : Esso
 WELL : 16/7-4
 FIELD : 16/7
 STATE : Norway

PAGE: 2

CORE NO.: 2 DATE: January 1983

Plug No.	Depth (meter)	Permeability (mD),		Porosity (%)	Pore saturation	Grain dens.	Formation Description
		horizontal Ka	vertical Ka				
19	2591.00			23.8	0	2.67	Sst.Gy.M-gr.Rndd.Fr-cmt.w/mic,dol.
20	2591.04	1105	253	15.3	0	2.64	A.A.F-gr.
21	2591.45	39	11.1	23.0		2.70	A.A.w/magn.
22	2591.78	8.8	7.9	19.2		2.66	A.A.M-gr.
23	2592.04	118	21	23.4	0	2.66	A.A.F-gr.
24	2592.44	16	3.8	24.2		2.65	A.A.
25	2592.82	19	5.5	24.6		2.65	A.A.
26	2593.11	19	nmp	23.3	0	2.66	A.A.
27	2593.44	0.55	0.113	19.1		2.67	A.A.M-gr.
28	2593.78	359	379	20.6		2.64	A.A.F-gr.
29	2594.14	2156	390	23.7	0	2.66	A.A.w-cmt.
30	2594.46	150	79	25.5		2.66	A.A.
31	2594.78	1.2	0.59	23.2		2.64	A.A.
32	2595.15	0.93	0.43	18.4	0	2.64	A.A.
33	2595.45	6.8	3.0	19.6		2.66	A.A.
34	2595.78	1.08	nmp	16.1		2.71	A.A.VF-gr.Brn.
35	2596.15	111	17	28.5	0	2.65	A.A.F-gr.Gy.
36	2596.44	0.46	0.41	18.9		2.65	A.A.M-gr.Bd-cmt.
37	2596.75	0.169	0.101	16.0	0	2.66	A.A.Fr-cmt.
38	2597.11	0.92	0.36	20.7		2.71	A.A.VF-gr.Brn.Ferr-mtrx.
39	2597.42	2122	382	26.3	0	2.68	A.A.F-gr.
40	2597.72	22	32	19.3		2.68	A.A.
41	2598.07	226	259	22.2	0	2.68	A.A.
42	2598.44	2.4	0.74	15.0		2.69	A.A.
43	2598.82	7.5	0.172	16.1		2.69	A.A.
44	2599.12	3.2	0.35	19.9	0	2.69	A.A.
45	2599.48	5.2	3.2	21.3		2.69	A.A.
46	2599.80	30	10.0	22.1		2.69	A.A.
47	2600.14	0.51	0.50	19.6	0	2.69	A.A.
47	2600.44	0.46	0.22	19.2		2.69	A.A.

20



FINAL REPORT

COMPANY: Esso
 WELL : 16/7-4
 FIELD : 16/7
 STATE : Norway

PAGE: 3

CORE NO.: 2 (cont.)

DATE: January 1983

Plug No.	Depth (meter)	Permeability (mD),		Porosity (%)	Pore saturation	Grain dens.	Formation Description
		horizontal K _a K _l	vertical K _a K _l				
48	2600.80	1.4	0.27	19.0		2.70	A.A.
49	2601.14	11.3	0.75	23.6	0	2.68	A.A.
50	2601.45	2.9	0.088	18.8	35.5	2.70	A.A.
51	2601.81	21	0.36	16.1		2.71	A.A.M-gr.Gy.
52	2602.65	0.169	0.073	11.6	0	2.74	A.A.VF-gr.
53	2603.96	0.31	0.27	18.3	26.8	2.69	A.A.F-gr.
54	2604.45	nmp	0.58	nmp			
55	2605.30	1.2	0.73	22.9	0	2.66	A.A.
56	2605.75	0.79	0.027	22.8	38.0	2.66	A.A.
	2605.90						

A



FINAL REPORT

PAGE: 4

COMPANY: Esso
 WELL : 16/7-4
 FIELD : 16/7
 STATE : Norway

CORE NO.: 3 DATE: January 1983

Plug No.	Depth (meter)	Permeability (mD),		Porosity (%)		Grain dens. g/cc	Formation Description				
		horizontal K _a K _l	vertical K _a K _l	He	Sum. saturation S _o S _w						
57	2607.00	0.86	0.58	0.49	0.32	20.7	14.2	0	45.7	2.68	Sst. Lt-brn. F-gr. Rndd. Fr-cmt. w/magn, dol.
58	2607.05	0.74	0.49	0.50	0.32	21.3				2.68	A.A. Gy. Cl-mtrx.
59	2607.44	2.4	1.7	0.76	0.51	21.6				2.66	A.A.
60	2607.75	23	19	4.8	3.6	19.8				2.68	A.A. M-gr.
61	2608.01	76	66	67	58	23.4				2.66	A.A.
62	2608.43	69	60	65	56	22.4				2.67	A.A.
63	2608.72	11.8	9.3	10.0	7.8	17.3				2.67	A.A. VW-cmt.
64	2609.05	18	15	2.9	2.1	14.7				2.68	A.A. w/Cl-len.
65	2609.35	0.40	0.26	0.23	0.14	13.1				2.66	A.A. w/o len.
66	2609.70	0.46	0.29	0.28	0.17	15.6				2.67	A.A.
67	2610.02	0.39	0.25	0.58	0.38	13.7				2.67	A.A.
68	2610.35	1.5	1.0	1.2	0.83	12.9				2.65	A.A.
69	2610.66	10.4	8.1	2.5	1.8	15.8				2.65	A.A.
70	2611.08	117	104	32	27	20.6				2.65	A.A. Fr-cmt.
71	2611.36	30	25	19	15	21.1				2.65	A.A.
72	2611.67	13	10	6.9	5.2	17.6				2.65	A.A. VW-cmt.
73	2612.05	580	550	50	43	24.3				2.65	A.A.
74	2612.35	10	7.8	300	270	15.1				2.65	A.A.
75	2612.72	793	753	430	400	24.0				2.66	A.A. Fr-cmt.
76	2613.00	nmp	nmp	0.183	0.11	nmp					
77	2613.33	0.117	0.07	0.40	0.26	19.8				2.70	Sst. Brn. VF-gr. Rndd. VW-cmt. w/mic, Cl, Ferr.
78	2613.68	1.86	1.3	0.46	0.29	21.6				2.65	A.A. Gy. F-gr.
79	2614.07	1.4	1.0	0.50	0.32	19.6				2.66	A.A. Brn.
80	2614.44	0.48	0.31	43	36	16.3				2.67	A.A.
81	2614.71	10.5	8.2	1.6	1.1	20.8				2.66	A.A. Gy. w/dol. w/o ferr.
82	2615.03	6.00	4.5	1.03	0.70	20.0				2.66	A.A. w-cmt.
83	2615.36	35	29	2.7	1.9	20.0				2.67	A.A.
84	2615.66	15	12	4.5	3.3	21.1				2.67	A.A.
85	2616.08	2.2	1.6	0.71	0.47	20.9				2.67	A.A. w/magn.



FINAL REPORT

COMPANY : Esso
 WELL : 16/7-4
 FIELD : 16/7
 STATE : Norway

PAGE: 5

DATE: January 1983

CORE NO.: 3 (cont.)

Plug No.	Depth (meter)	Permeability (mD),		Porosity (%)	Pore saturation	Grain dens.	Formation Description
		horizontal	vertical				
		K _a	K _v	He	S _o	S _w	
86	2616.66	4.0	2.9	20.8	0	25.8	A.A.
87	2617.02	74	4.9	20.4	16.0	25.8	A.A.M-gr.Fr-cmt.
88	2617.39	14	3.1	18.2			A.A.
89	2617.75	1.2	0.83	16.8			A.A.
90	2618.08	4.4	3.3	18.9	17.6	43.7	A.A.
91	2618.39	161	145	20.9			A.A.
92	2618.66	1.4	1.0	18.6			A.A.F-gr.
93	2619.10	5.0	3.7	20.9	18.1	43.5	A.A.M-gr.
94	2619.45	37	31	19.1			A.A.
95	2619.73	0.72	0.48	17.9			A.A.F-gr.
96	2619.98	1.11	0.8	19.2	15.5	43.3	A.A.
97	2620.32	4.3	3.2	18.3			A.A.M-gr.
98	2620.65	127	113	23.2			A.A.
99	2620.99	81	71	17.4	22.6	39.1	A.A.
100	2621.33	36	30	20.6			A.A.
101	2621.66	3.0	2.2	19.1			A.A.abd-magn.
102	2622.01	0.52	0.34	20.8	14.8	61.7	Sst.Brnd.F-gr.Rnnd.w-cmt.w-srt.w/mic.
103	2622.47	0.64	0.42	18.1			A.A.
104	2622.78	0.68	0.45	21.7			A.A.
105	2623.07	2.3	1.6	14.2	13.2	37.7	A.A.w/magn.
106	2623.45	28	23	15.7			A.A.
107	2623.80	0.94	0.64	15.9			A.A.
	2624.55						

15



GECO
 GEOPHYSICAL COMPANY
 OF NORWAY AS
 Petroleum laboratory

FINAL REPORT

PAGE: 6

COMPANY: Esso
 WELL: 16/7-4
 FIELD: 16/7
 STATE: Norway

DATE: January 1983

CORE NO.: 4

Plug No.	Depth (meter)	Permeability (mD),		Porosity (%)	Grain dens. g/cc	Formation Description			
		horizontal Ka Kl	vertical Ka Kl						
108	2625.00	19	0.30	18.5	22.6	0	52.1	2.72	Sst. Brn. F-gr. Rn d d. w-cmt. w/mic, ferr-mtrix.
109	2625.25	3.1	nmp	12.7				2.74	A.A. w/magn, calc.
110	2625.63	14	10.2	15.0				2.74	A.A.
111	2625.95	251	nmp	25.0	25.4	0	37.7	2.67	A.A. Gy. w/o calc.
112	2626.25	6.5	nmp	nmp					
113	2626.65	4.9	nmp	16.7				2.68	A.A.
114	2626.95	0.41	0.118	23.7	18.0	0	71.9	2.69	A.A. Brn. VW-srt.
115	2627.25	1.8	0.41	21.7				2.73	A.A.
116	2627.63	0.63	0.37	22.3				2.65	A.A.
117	2627.92	0.49	0.196	14.8	25.1	0	76.1	2.70	A.A.
118	2628.27	0.35	0.28	21.3				2.70	A.A.
119	2628.60	0.62	0.131	23.6				2.69	A.A.
120	2628.90	0.70	0.23	22.7	21.4	0	51.9	2.67	A.A. Gy. Fr-cmt. w/dol.
121	2629.24	nmp	8.0	18.7				2.70	A.A. Brn. w-cmt.
122	2629.60	0.83	0.48	17.8				2.69	A.A.
123	2629.90	1.4	0.29	21.2	17.4	0	61.2	2.69	A.A.
124	2630.25	0.79	0.72	17.4				2.70	A.A.
125	2630.55	2.4	1.05	22.9				2.68	A.A.
126	2630.90	1.2	1.3	19.8	13.0	0	54.9	2.71	A.A.
127	2631.24	0.75	0.28	17.3				2.65	A.A.
128	2631.63	1.6	0.51	16.1				2.71	A.A.
129	2631.93	0.93	0.41	20.4	18.8	0	77.8	2.68	A.A.
130	2632.22	0.46	0.185	20.0				2.68	A.A.
131	2632.54	1.09	0.59	23.5	15.1	0	58.8	2.70	A.A.
132	2632.88	0.96	0.61	23.5				2.67	A.A.
133	2633.28	0.87	0.49	18.8				2.68	A.A.
134	2633.55	0.74	0.46	19.8				2.74	A.A.
135	2633.88	0.39	0.079	24.0	15.0	0	53.9	2.66	A.A.
136	2634.25	0.52	0.32	19.6				2.66	A.A.
136	2634.61	2.1	0.60	24.0				2.66	A.A.

0

COMPANY: Esso
 WELL : 16/7-4
 FIELD : 16/7
 STATE : Norway

FINAL REPORT

PAGE: 7

CORE NO.: 4 (cont.)

DATE: January 1983



Plug No.	Depth (meter)	Permeability (mD),		Porosity (%)	Pore saturation	Grain dens.	Formation Description				
		horizontal K _a	vertical K _a					He Sum.	S _o	S _w	g/cc
137	2634.90	2.4	1.7	0.75	0.50	21.2	20.0	0	49.4	2.66	A.A.
138	2635.23	5.6	4.2	2.4	1.7	22.9	20.0	0		2.66	A.A.
139	2635.55	2.7	1.9	0.96	0.65	22.9	20.0	0		2.65	A.A.
140	2635.84	0.68	0.45	0.40	0.26	21.8	23.1	0	65.7	2.67	A.A.
141	2636.25	0.73	0.48	0.28	0.17	21.5	23.1	0		2.66	A.A.
142	2636.57	1.9	1.3	1.2	0.83	19.9	13.9	0		2.67	A.A.
143	2636.89	58	50	15	12	22.5	13.9	0		2.66	A.A.M-gr.
144	2637.30	2.40	1.7	0.91	0.61	19.8	13.9	0		2.65	A.A.F-gr.
145	2637.60	2.6	1.9	1.6	1.1	21.2	14.3	0		2.67	A.A.
146	2637.95	7.7	5.9	1.3	0.91	24.9	13.0	0	23.9	2.69	A.A.M-gr.
147	2638.24	6.3	4.8	2.7	1.9	24.7	14.3	0	57.4	2.67	A.A.F-gr.
148	2639.50	0.86	0.58	0.37	0.23	12.7	14.3	0		2.72	A.A.
149	2639.85	0.184	0.11	0.119	0.07	19.8	18.9	0		2.70	A.A.VF-gr.
150	2640.20	1.9	1.3	1.2	0.83	17.5	18.9	0	66.7	2.70	A.A.F-gr.
151	2640.55	1.1	0.8	nvpp		22.8	16.3	0	39.3	2.68	A.A.
152	2641.40	6.5	4.9	4.7	3.5	20.7	16.3	0		2.67	A.A.
153	2641.75	9.3	7.2	4.7	3.5	21.0	15.9	0		2.66	A.A.
154	2642.10	10.4	8.1	3.4	2.5	21.8	15.9	0	52.3	2.66	A.A.
155	2642.40	1.4	1.0	0.51	0.33	18.2	20.8			2.64	A.A.
156	2642.75	60	52	13	10	20.8	20.3			2.66	A.A.M-gr.
157	2643.15	329	299	273	253	20.3				2.66	A.A.
	2643.50										

110

COMPANY: Esso
 WELL : 16/7-4
 FIELD : 16/7
 STATE : Norway

FINAL REPORT

PAGE: 8

DATE: January 1983

CORE NO.: 5



Plug No.	Depth (meter)	Permeability (mD),		Porosity (%)		Grain dens. g/cc	Formation Description	
		horizontal K _a	vertical K _a	He	Sum. So			
158	2643.50	nhpp	13	nhpp	18.5	0	2.73	Sst.Brn.F-gr.Rndd.w-cmt.w/magn.ferr-mtrx
159	2643.55	0.75	0.54	22.1	0	40.0	2.66	A.A.w/dol.
160	2643.85	1.3	0.76	20.6	0	44.9	2.66	A.A.
161	2644.20	3.3	1.04	20.1	0		2.65	A.A.
162	2644.55	3.0	2.2	20.0	0		2.66	A.A.
163	2644.85	0.22	0.23	15.0	0	40.5	2.66	A.A.
164	2645.20	1.3	0.79	19.9	0		2.66	A.A.M-gr.
165	2645.55	121	1.2	22.2	0	73.9	2.65	A.A.F-gr.
166	2646.20	3.7	0.85	20.8	0		2.69	A.A.
167	2646.55	0.26	0.33	20.7	0		2.67	A.A.
168	2646.85	nmp	0.88	22.1	0	69.4	2.71	A.A.
169	2647.20	0.33	0.59	15.6	0		2.70	A.A.
170	2647.55	0.32	0.20	19.0	0		2.70	A.A.
171	2647.85	0.56	0.45	16.3	0		2.68	A.A.
172	2648.20	0.90	0.63	16.0	0	52.5	2.66	A.A.
173	2648.55	8.1	1.6	20.2	0		2.65	A.A.
174	2648.85	7.4	1.9	21.8	0	59.0	2.68	A.A.
175	2649.20	4.4	nmp	22.0	0		2.66	A.A.
176	2649.55	2.9	0.96	21.7	0		2.65	A.A.
177	2649.85	0.58	0.98	20.2	0		2.66	A.A.
178	2650.20	4.4	0.38	16.9	0	52.8	2.65	A.A.
179	2650.55	4.1	1.11	18.5	0		2.66	A.A.
180	2650.85	22	3.4	20.3	0	37.1	2.66	A.A.
181	2651.20	85	113	20.2	0		2.66	A.A.
182	2651.55	22	0.87	17.2	0		2.65	A.A.
183	2651.85	7.0	3.6	18.5	0		2.66	A.A.
184	2652.20	118	6.6	18.1	0	50.0	2.66	A.A.M-gr.
185	2652.55	0.62	105	14.1	0		2.68	A.A.F-gr.
186	2652.85	0.85	0.40	18.7	0		2.69	A.A.
	2653.20	0.57	0.95	18.7	0			

15

COMPANY: Esso
WELL : 16/7-4
FIELD : 16/7
STATE : Norway

FINAL REPORT

PAGE: 9

DATE: January 1983

CORE NO.: 5 (cont.)

Plug No.	Depth (meter)	Permeability (mD),		Porosity (%)		Grain dens. g/cc	Formation Description				
		horizontal K _a	vertical K _v	He Sum.	S _o saturation						
187	2653.50	0.44	0.28	0.87	0.58	13.7	11.7	0	68.1	2.70	A.A.
188	2653.85	0.38	0.24	0.45	0.29	19.0				2.68	A.A.
189	2654.20	0.55	0.36	0.23	0.14	19.5				2.67	A.A.
190	2654.50	0.88	0.59	0.35	0.22	18.7	6.9	0	38.0	2.67	A.A.
191	2655.05	0.67	0.44	0.30	0.19	17.5				2.67	A.A.
192	2655.35	1.6	1.1	0.32	0.20	18.1	12.8	0	62.2	2.66	A.A.
193	2655.70	15	12	8.4	6.5	21.2				2.64	A.A.
194	2656.05	22	18	23	19	20.1				2.64	A.A.M-gr.
195	2656.35	0.51	0.33	0.32	0.20	13.9	11.5	0	62.8	2.69	A.A.F-gr.
196	2656.70	1.7	1.2	1.2	0.83	14.9				2.69	A.A.
197	2657.05	0.25	0.16	0.29	0.18	13.1				2.72	A.A.
198	2657.35	11.2	8.8	1.2	0.83	18.1	13.0	0	56.5	2.68	A.A.M-gr.
199	2657.70	0.69	0.45	0.28	0.17	13.9				2.70	A.A.F-gr.
200	2658.05	0.149	0.09	0.127	0.07	13.0				2.70	A.A.
201	2658.35	4.6	3.4	0.32	0.20	15.8	12.7	0	58.2	2.68	A.A.F/M-gr.
202	2658.70	0.31	0.19	0.24	0.15	14.4				2.70	A.A.F-gr.w/mic.
203	2659.05	3.1	2.2	0.25	0.16	14.6				2.70	A.A.
204	2659.35	18	15	3.1	2.2	19.2	19.6	0	57.4	2.67	A.A.M-gr.
205	2659.70	10.4	8.1	3.0	2.2	17.4				2.67	A.A.
206	2660.05	4.7	3.5	1.3	0.91	20.2				2.66	A.A.
207	2660.35	0.38	0.24	0.25	0.16	15.5	17.6	0	74.1	2.68	A.A.F-gr.
208	2660.70	0.86	0.58	0.63	0.42	21.2				2.65	A.A.
209	2661.00	0.212	0.13	0.098	0.06	14.0				2.70	A.A.
210	2661.35	116	103	1.3	0.91	19.4	15.4	0	40.9	2.67	A.A.M-gr.
	2662.50										

11



GECO
 GEOPHYSICAL COMPANY
 OF NORWAY AS
 Petroleum laboratory

COMPANY: Esso
 WELL : 16/7-4
 FIELD : 16/7
 STATE : Norway

FINAL REPORT

PAGE: 10

DATE: January 1983

CORE NO.: 6

Plug No.	Depth (meter)	Permeability (mD),		Porosity (%)	Pore saturation		Grain dens. g/cc	Formation Description			
		horizontal Ka K1	vertical Ka K1		He	So Sw					
211	2662.50	0.33	0.21	0.31	0.19	18.4	10.7	0	51.6	2.67	Sst.Brn.F-gr.Rnddd.w-cmt.w/ferr-mtrx,mic.
212	2662.55	0.57	0.36	0.58	0.38	19.1				2.68	A.A.w/dol,magn.
213	2663.30	0.27	0.17	0.26	0.16	16.7				2.70	A.A.
214	2663.66	0.35	0.22	0.214	0.13	20.1	14.3	0	76.0	2.67	A.A.
215	2664.00	0.29	0.18	0.28	0.17	14.9				2.66	A.A.
216	2664.35	0.76	0.51	0.57	0.37	19.9				2.66	A.A.
217	2664.69	0.74	0.49	0.27	0.17	19.0	11.4	0	61.0	2.67	A.A.
218	2665.00	48	41	23	19	18.9				2.66	A.A.M-gr.
219	2665.31	2.3	1.6	0.52	0.34	18.6				2.68	A.A.F-gr.
220	2665.66	2.9	2.1	0.64	0.42	18.0	20.0	0	61.6	2.69	A.A.
221	2666.00	1.6	1.1	0.77	0.52	17.5				2.69	A.A.
222	2666.33	0.32	0.20	0.198	0.12	12.7				2.70	A.A.
223	2666.65	1.4	1.0	0.65	0.43	17.4	11.4	0	54.8	2.69	A.A.
224	2667.01	0.84	0.56	0.39	0.25	15.3				2.70	A.A.
225	2667.33	10.7	8.4	1.2	0.83	19.3				2.68	A.A.M-gr.
226	2667.70	1.3	0.91	0.59	0.38	17.3	19.1	0	65.1	2.69	A.A.F-gr.
227	2668.03	1.8	1.3	1.9	1.3	16.5				2.67	A.A.M-gr.
228	2668.31	0.50	0.32	0.29	0.18	15.5				2.71	A.A.F-gr.
229	2668.66	2.3	1.6	1.8	1.3	17.6	13.9	0	55.0	2.68	A.A.M-gr.
230	2669.00	8.4	6.5	2.8	2.0	15.4				2.69	A.A.
231	2669.33	3.5	2.5	0.60	0.39	16.5				2.71	A.A.F-gr.
232	2669.66	0.95	0.65	0.36	0.23	15.0	10.0	0	50.5	2.72	A.A.
233	2670.00	1.6	1.1	0.72	0.48	17.1				2.70	A.A.
234	2670.33	0.70	0.46	0.35	0.22	13.5				2.72	A.A.
235	2670.66	49	42	29	24	20.1	10.4	0	46.5	2.67	A.A.M-gr.
236	2671.00	0.35	0.22	0.215	0.13	15.2				2.71	A.A.F-gr.
237	2671.35	1.2	0.83	0.72	0.48	18.7				2.69	A.A.
238	2671.66	1.8	1.3	0.46	0.29	15.5	14.2	0	59.3	2.71	A.A.
239	2672.03	7.7	5.9	0.53	0.34	17.5				2.69	A.A.M-gr.



GECO
 GEOPHYSICAL COMPANY
 OF NORWAY AS
 Petroleum Laboratory

FINAL REPORT

PAGE: 11

COMPANY: Esso
 WELL : 16/7-4
 FIELD : 16/7
 STATE : Norway

CORE NO.: 6 (cont.) DATE: January 1983

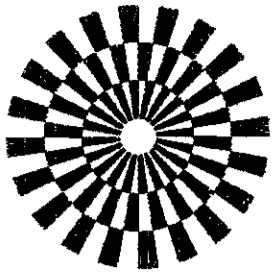
Plug No.	Depth (meter)	Permeability (mD),		Porosity (%)	Pore saturation	Grain dens.	Formation Description
		horizontal	vertical				
		K _a	K _v	He	S _o	S _w	
240	2672.38	0.90	0.90	16.0			A.A.F-gr.
241	2672.65	0.33	0.21	14.1	7.2	48.9	A.A.
242	2673.00	0.61	0.40	17.6			A.A.
243	2673.31	0.64	0.42	16.5			A.A.
244	2673.68	0.78	0.52	17.5	13.6	59.1	A.A.
245	2674.00	3.5	2.5	15.9			A.A.
246	2674.33	0.79	0.53	13.4			A.A.
247	2674.66	4.3	3.2	16.0	12.5	58.3	A.A.M/F-gr.
248	2675.03	4.6	3.4	21.3			A.A.
249	2675.33	1.00	0.68	19.1			A.A.
250	2675.85	nmp	nmp	nmp	16.3	74.8	A.A.F-gr.
251	2676.10	nmp	nmp	nmp			A.A.
252	2676.32	0.85	0.57	14.1			A.A.
253	2676.66	0.64	0.42	19.4	10.0	57.1	A.A.
254	2677.03	0.78	0.52	18.7			A.A.
255	2677.31	0.40	0.26	14.8			A.A.
256	2677.68	1.4	1.0	20.0	14.9	67.3	A.A.
257	2678.08	2.4	1.7	13.3			A.A.Gy.M/F-gr.
258	2678.33	1.8	1.3	19.6			A.A.Brn.F-gr.
259	2678.68	0.67	0.44	15.4	15.0	64.1	A.A.
260	2679.00	0.83	0.56	16.6			A.A.
261	2679.33	0.52	0.34	17.4			A.A.
262	2679.67	0.70	0.46	15.8	7.4	14.0	A.A.
263	2680.03	1.2	0.83	13.6			A.A.M-gr.
264	2680.33	12	10	17.2			A.A.
265	2680.70	9.6	7.4	22.6	16.8	74.9	A.A.
	2680.75						

80

COMPANY: ESSO
 WELL: 16/7-4
 LOCATION:

FIELD: 16/7
 COUNTY:
 STATE: NORWAY

FILE:
 DATE: JAN. 1983
 ELEV.:



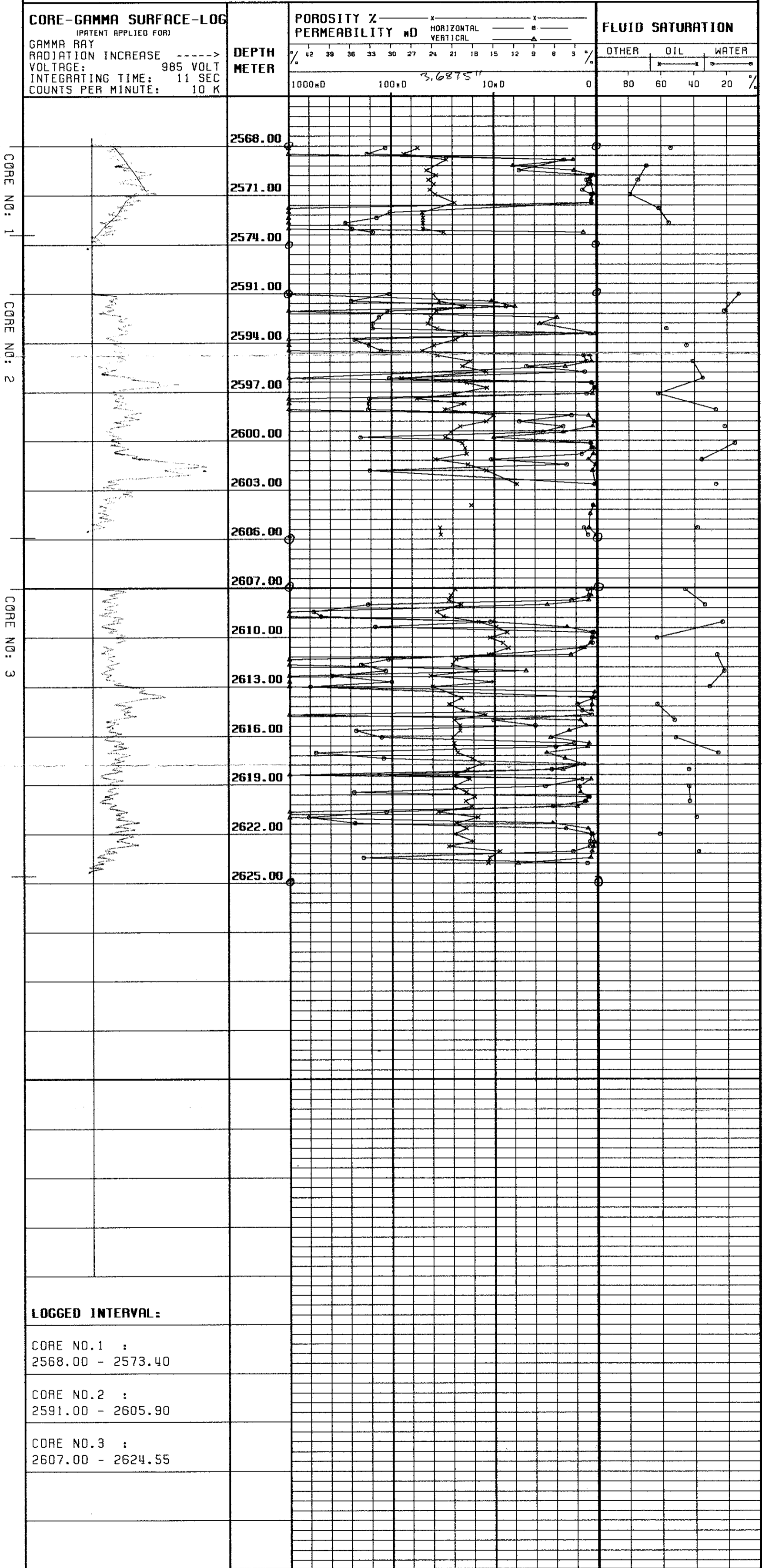
GECO
 GEOPHYSICAL COMPANY
 OF NORWAY A.S

CORE GRAPH

THESE ANALYSES, OPINIONS OR INTERPRETATIONS ARE BASED ON OBSERVATIONS AND MATERIAL SUPPLIED BY THE CLIENT TO WHOM, AND FOR WHOSE EXCLUSIVE AND CONFIDENTIAL USE, THIS REPORT IS MADE. THE INTERPRETATIONS OR OPINIONS EXPRESSED REPRESENT THE BEST JUDGEMENT OF GECO LABORATORIES AND ITS OFFICERS AND EMPLOYEES.

VERTICAL SCALE: 1:200

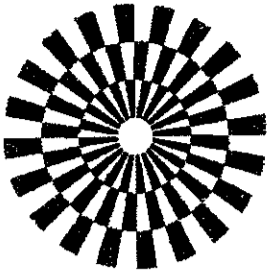
LABORATORY



COMPANY: ESSO
 WELL: 16/7-4
 LOCATION:

FIELD: 16/7
 COUNTY:
 STATE: NORWAY

FILE:
 DATE: JAN. 1983
 ELEV.:



GECO
 GEOPHYSICAL COMPANY
 OF NORWAY A.S.

CORE GRAPH

THESE ANALYSES, OPINIONS OR INTERPRETATIONS ARE BASED ON OBSERVATIONS AND MATERIAL SUPPLIED BY THE CLIENT TO WHOM, AND FOR WHOSE EXCLUSIVE AND CONFIDENTIAL USE, THIS REPORT IS MADE. THE INTERPRETATIONS OR OPINIONS EXPRESSED REPRESENT THE BEST JUDGEMENT OF GECO LABORATORIES AND ITS OFFICERS AND EMPLOYEES.

VERTICAL SCALE: 1:200

LABORATORY

CORE-GAMMA SURFACE-LOG
 (PATENT APPLIED FOR)
 GAMMA RAY RADIATION INCREASE ----->
 VOLTAGE: 985 VOLT
 INTEGRATING TIME: 11 SEC
 COUNTS PER MINUTE: 10 K

DEPTH METER

POROSITY & PERMEABILITY mD
 HORIZONTAL: x
 VERTICAL: o

42 39 36 33 30 27 24 21 18 15 12 9 6 3 %

1000mD 100mD 10mD 0

FLUID SATURATION

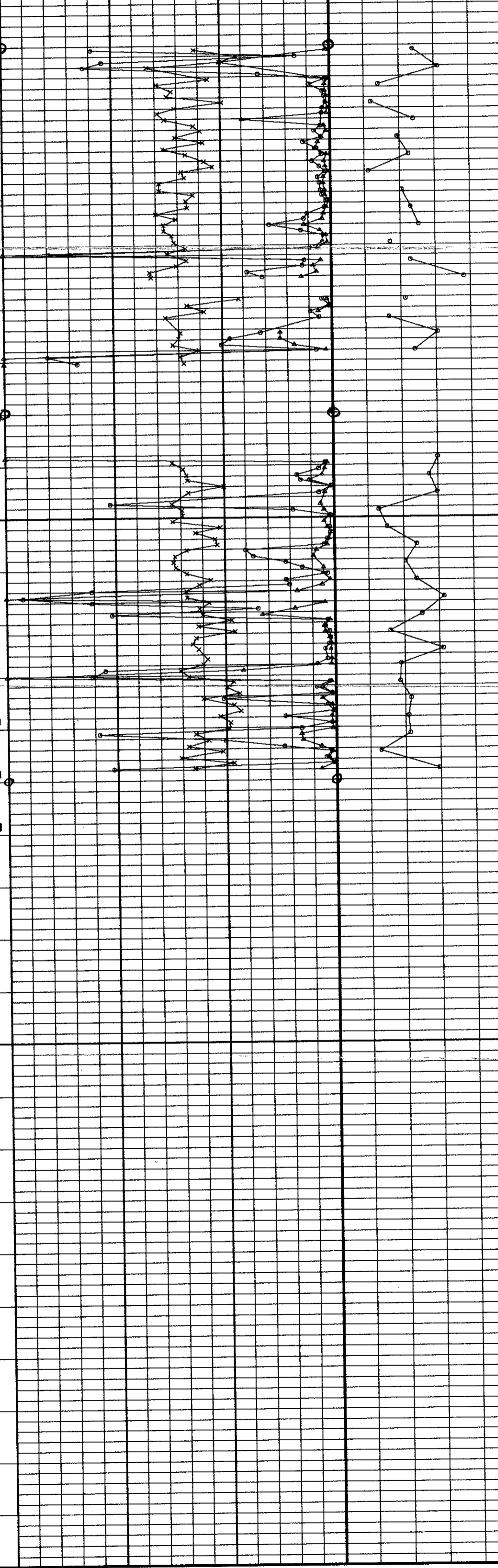
OTHER OIL WATER

80 60 40 20 %

CORE NO: 4

CORE NO: 5

2625.00
 2628.00
 2631.00
 2634.00
 2637.00
 2640.00
 2643.00
 2646.00
 2649.00
 2647.00
 2650.00
 2653.00
 2656.00
 2659.00
 2662.00
 2665.00



LOGGED INTERVAL:

CORE NO. 4 :
 2625.00 - 2643.50

CORE NO. 5 :
 2643.50 - 2662.50

COMPANY: ESSØ

FIELD: 16/7

FILE:

WELL: 16/7-4

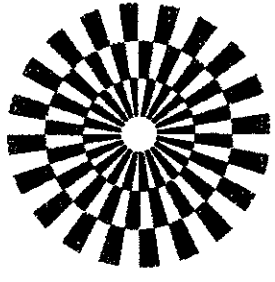
COUNTY:

DATE: JAN. 1983

LOCATION:

STATE: NORWAY

ELEV.:



CORE GRAPH

THESE ANALYSES, OPINIONS OR INTERPRETATIONS ARE BASED ON OBSERVATIONS AND MATERIAL SUPPLIED BY THE CLIENT TO WHOM, AND FOR WHOSE EXCLUSIVE AND CONFIDENTIAL USE, THIS REPORT IS MADE. THE INTERPRETATIONS OR OPINIONS EXPRESSED REPRESENT THE BEST JUDGEMENT OF GECO LABORATORIES AND ITS OFFICERS AND EMPLOYEES.

GECO
GEOPHYSICAL COMPANY
OF NORWAY A.S

VERTICAL SCALE: 1:200

LABORATORY

CORE-GAMMA SURFACE-LOG
(PATENT APPLIED FOR)
GAMMA RAY
RADIATION INCREASE ----->
VOLTAGE: 985 VOLT
INTEGRATING TIME: 11 SEC
COUNTS PER MINUTE: 10 K

DEPTH
METER

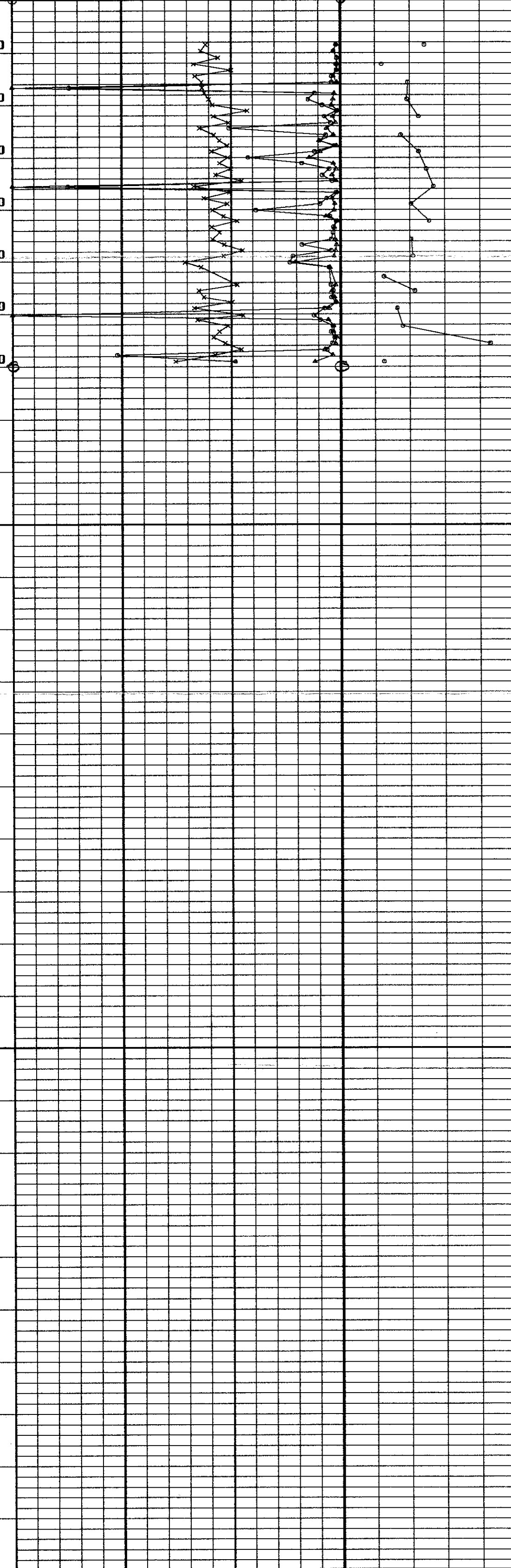
POROSITY & PERMEABILITY mD

1000mD 100mD 10mD

FLUID SATURATION

OTHER OIL WATER
80 60 40 20 %

2661
2663.00
2666.00
2669.00
2672.00
2675.00
2678.00
2681.00



LOGGED INTERVAL:

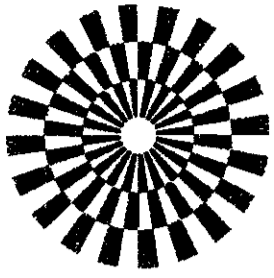
CORE NO. 6 :
2662.50 - 2680.75

CORE NO: 6

COMPANY: ESSØ
 WELL: 16/7-4
 LOCATION:

FIELD: 16/7
 COUNTY:
 STATE: NORWAY

FILE:
 DATE: JAN. 1983
 ELEV.:



GECO
 GEOPHYSICAL COMPANY
 OF NORWAY A.S

CORE GRAPH

THESE ANALYSES, OPINIONS OR INTERPRETATIONS ARE BASED ON OBSERVATIONS AND MATERIAL SUPPLIED BY THE CLIENT TO WHOM, AND FOR WHOM EXCLUSIVE AND CONFIDENTIAL USE. THIS REPORT IS MADE. THE INTERPRETATIONS OR OPINIONS EXPRESSED REPRESENT THE BEST JUDGMENT OF GECO LABORATORIES AND ITS OFFICERS AND EMPLOYEES.

VERTICAL SCALE: 1:200

LABORATORY

CORE-GAMMA SURFACE-LOG
 (PATENT APPLIED FOR)
 GAMMA RAY
 RADIATION INCREASE ----->
 VOLTAGE: 985 VOLT
 INTEGRATING TIME: 11 SEC
 COUNTS PER MINUTE: 10 K

DEPTH
 METER

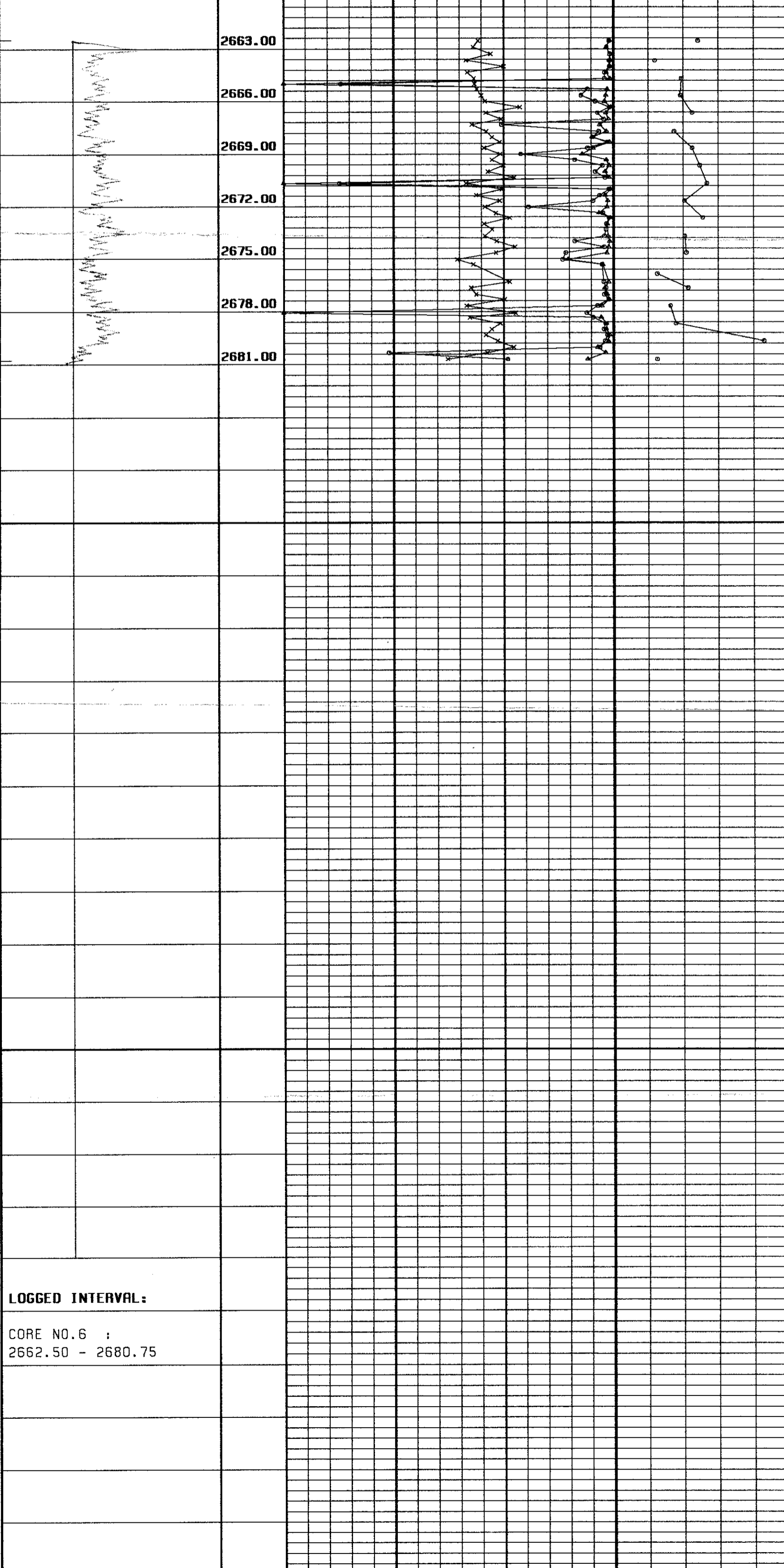
POROSITY % ——— x ———
PERMEABILITY mD HORIZONTAL ——— x ———
 VERTICAL ——— x ———
 % 42 39 36 33 30 27 24 21 18 15 12 9 6 3 %
 1000mD 100mD 10mD 0

FLUID SATURATION

OTHER OIL WATER
 80 60 40 20 %

CORE NO. 6

2663.00
 2666.00
 2669.00
 2672.00
 2675.00
 2678.00
 2681.00



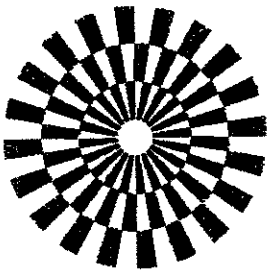
LOGGED INTERVAL:

CORE NO. 6 ;
 2662.50 - 2680.75

COMPANY: ESSO
 WELL: 16/7-4
 LOCATION:

FIELD: 16/7
 COUNTY:
 STATE: NORWAY

FILE:
 DATE: JAN. 1983
 ELEV.:



GECO
 GEOPHYSICAL COMPANY
 OF NORWAY A.S.

CORE GRAPH

THESE ANALYSES, OPINIONS OR INTERPRETATIONS ARE BASED ON OBSERVATIONS AND MATERIAL SUPPLIED BY THE CLIENT TO WHOM, AND FOR WHOSE EXCLUSIVE AND CONFIDENTIAL USE, THIS REPORT IS MADE. THE INTERPRETATIONS OR OPINIONS EXPRESSED REPRESENT THE BEST JUDGEMENT OF GECO LABORATORIES AND ITS OFFICERS AND EMPLOYEES.

VERTICAL SCALE: 1:200

LABORATORY

CORE-GAMMA SURFACE-LOG
 (PATENT APPLIED FOR)
 GAMMA RAY RADIATION INCREASE ----->
 VOLTAGE: 985 VOLT
 INTEGRATING TIME: 11 SEC
 COUNTS PER MINUTE: 10 K

DEPTH
 METER

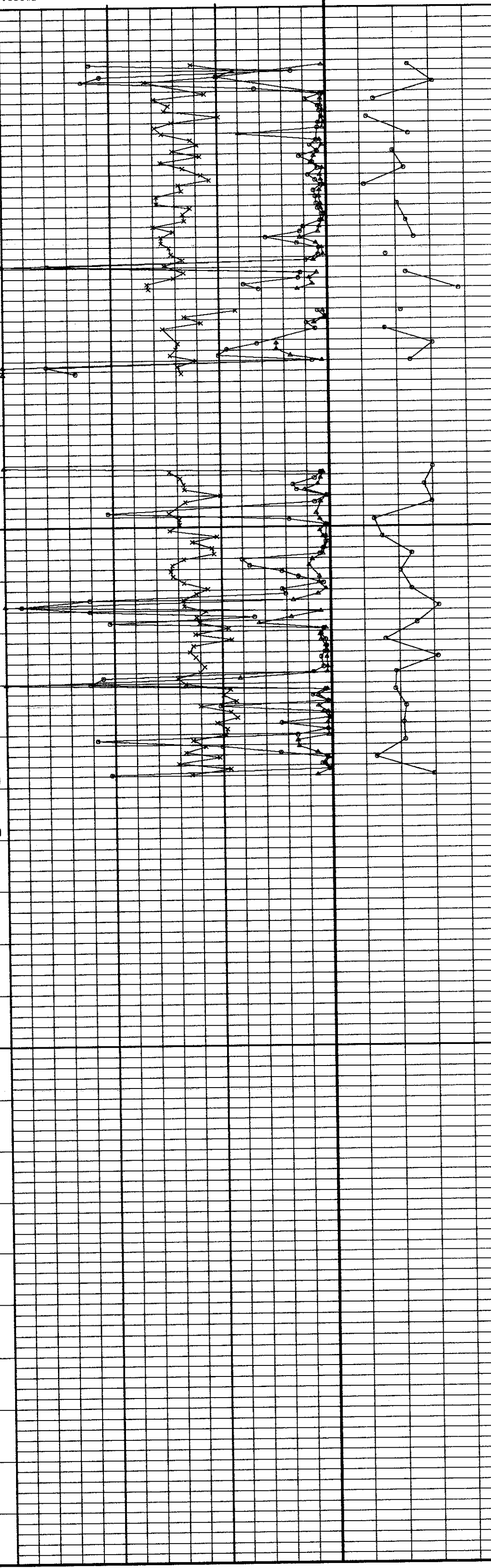
POROSITY & PERMEABILITY mD
 HORIZONTAL: x
 VERTICAL: o

FLUID SATURATION
 OTHER: x OIL: o WATER: o

CORE NO: 4

CORE NO: 5

2625.00
 2628.00
 2631.00
 2634.00
 2637.00
 2640.00
 2643.00
 2646.00
 2644.00
 2647.00
 2650.00
 2653.00
 2656.00
 2659.00
 2662.00
 2665.00



LOGGED INTERVAL:

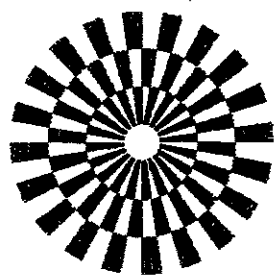
CORE NO. 4 :
 2625.00 - 2643.50

CORE NO. 5 :
 2643.50 - 2662.50

COMPANY: ESSO
 WELL: 16/7-4
 LOCATION:

FIELD: 16/7
 COUNTY:
 STATE: NORWAY

FILE:
 DATE: JAN. 1983
 ELEV.:



GECO
 GEOPHYSICAL COMPANY
 OF NORWAY A.S

CORE GRAPH

THESE ANALYSES, OPINIONS OR INTERPRETATIONS ARE BASED ON OBSERVATIONS AND MATERIAL SUPPLIED BY THE CLIENT TO WHOM, AND FOR WHOSE EXCLUSIVE AND CONFIDENTIAL USE, THIS REPORT IS MADE. THE INTERPRETATIONS OR OPINIONS EXPRESSED REPRESENT THE BEST JUDGEMENT OF GECO LABORATORIES AND ITS OFFICERS AND EMPLOYEES.

VERTICAL SCALE: 1:200

LABORATORY

