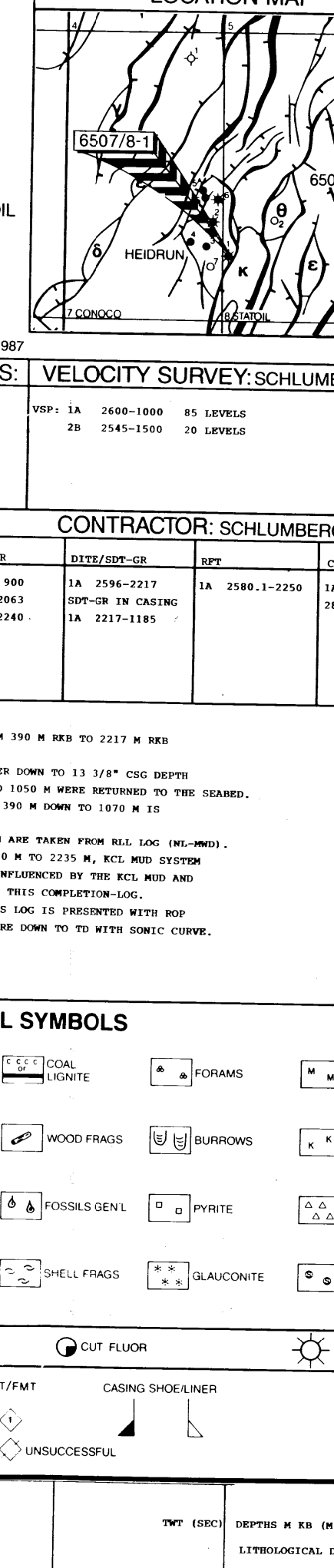


6507/8-1 COMPLETION LOG Scale 1:500
 AREA: HALTENBANKEN
 COORDINATES: PL 124
 65° 18' 35.03" N
 07° 20' 52.80" E
 K.B.: 29 m
 WATER DEPTH: 342 m
 TOTAL DEPTH: 2600 m RKB
 DEEPEST FORM. PEN.: HITRA FM
 SPUD DATE: 28.10.1986
 RIG RELEASE DATE: 09.12.1986
 WELL STATUS: PLUGGED AND ABANDONED OIL AND GAS DISCOVERY
 RIG: DVVI DELTA
 CONTRACTOR: DVVI OFFSHORE
 GEOLOGISTS: T. SVANA, O. HUNNES, T. W. SMARE.
 PREPARED BY: S. SINGH DATE: MAY 1987



CASING DATA:		LEAK OFF TESTS:		VELOCITY SURVEY: SCHLUMBERGER	
30' at 444 m RKB		VS1 1A 2540-1000	81 LEVELS	VS1 1A 2540-1000	25 LEVELS
20' at 464 m RKB					
16' at 480 m RKB					
13 3/8" at 1033 m RKB					
9 5/8" at 2217 m RKB					
7" at 2596.5 m RKB					

LOGS RUN		CONTRACTOR: SCHLUMBERGER	
IA 2600-2217	IA 2591-2217	IA 2216-1900	IA 2546-2217
		IA 2550-2063	IA 2546-2217
		IA 2421-2240	IA 2217-1900

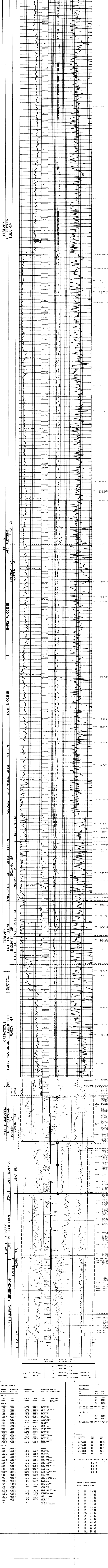
COMMENTS:
 1. THIS WELL WAS THE ONLY LOG RUN FROM 390 M RKB TO 2217 M RKB
 2. THE WELL WAS DRILLED WITHOUT RISER DOWN TO 13 3/8" CSG DEPTH
 I.E. 1810 M. ON CAPPING DOWN TO 1610 M WERE RETURNED TO THE SEA.
 LITHOLOGICAL INTERPRETATION FROM 390 M DOWN TO 1610 M IS
 BASED ON THE 7" MD LOG ONLY.
 3. ON-NEEDLE FROM 1904 M TO 2217 M AND FROM FROM 1911 M (RKB) -
 4. IN THE 12 1/4" HOLE I.E. FROM 1055 M TO 2217 M, ALL MD LOGS
 ARE CORRECT AS SUCH (INDICATED) IN THIS COMPLETION LOG.
 5. THE RIGHT HAND SIDE COLUMN OF THIS LOG IS PREVIOUSLY WITH ROP
 CURVE DOWN TO 2217 M AND FROM THERE DOWN TO 1610 M RKB.

LITHOLOGICAL SYMBOLS

CONGLOMERATE	SHALE	MARL	COAL	COAL	FORAMS	MICA
SAND SANDSTONE	LIMESTONE	TUFF	WOOD FRAGS	BUFFRINGS	KALONIN	
SILTSTONE	CHALK	SALT GELN	MOSSILS GELN	PIWHITE	CHERT	
CLAY CLAYSTONE	PODCMITE	AMPHIBOLITE	SHELL FRAGS	GLAUCONITE	SCORITE	

SIDEWALL CORES

REC	NO REC	NO REC
REC	NO REC	NO REC



DEPTH PRESSURE POINTS

NO	DEPTH (M)	HYDROFAT (PP1A)	FORMATION (PP1A)	CE/C	HYDROFAT RESERVE (PP1A)	PERMEABILITY
1	2200	3893.4	3544.1	1.108	3893.4	EXCELLENT
2	2137	4012.8	3544.9	1.083	4012.8	VERY GOOD TO EXC.

DOT SUMMARY

TEST NO.	DATE	WHP (BAR)	SWP (BAR)	Q (m³/d)
1	1.11	3350	2571	368
2	1.41	3040	2460	381
3	1.27	2720	2383	500
4	2.34	2180	1789	627
5	1.81	1820	1712	718