

FLOPETROL JO

L&U DOK. SENTER

L. NR. 12484140002

KODE Well 31/2-13 nr.4

Returneres etter bruk

HIGH ACCURACY PRESSURE TEMPERATURE MEASUREMENTS

Company : NORSKE SHELL Country : NORWAY

Field : TROLL Well : 31/2-13 (H)

Zone : JURASSIC Date : 25.02.84
SANDSTONE

FLOPETROL JOHNSTON

Schlumberger

FLOPETROL

DISTRICT : EMR / NSD

BASE : NWB

REPORT No. : ELS 84.12

HIGH ACCURACY PRESSURE TEMPERATURE MEASUREMENTS

Company : NORSKE SHELL Country : NORWAY

Field : TROLL Well : 31/2-13 (H)

Zone : JURASSIC Date : 25.02.84
 SANDSTONE

FLOPETROL

Client : NORSKE SHELL

Section

INDEX

Field : TROLL

Base: NWB

Well : 31/2 - 13

Report No: ELS 84.12

INDEX

- MEASUREMENT PLOTS
- MEASUREMENT DATA
- SEQUENCE OF EVENTS
- WELL COMPLETION DATA
- LISTING OF ALL DATA RECORDED
-
-

Flop petrol operator:

JONNY SOLBERG

Company representative:

DAVE HAMMOND

HIGH EXCURSION PRESSURE MEASUREMENT
 FLUORETROL
 CILINER PLOT

CLIENT : NORSE SHELL
 FIELD : TROLL
 WELL : 31/2-13
 ZONE : JURASSIC SANDSTONE
 PREPS : 1801 - 1807 M AHBDF
 GAUGE : TPI 82404
 DEPTH : 1771 M AHBDF
 DATE : 25TH FEB. 84

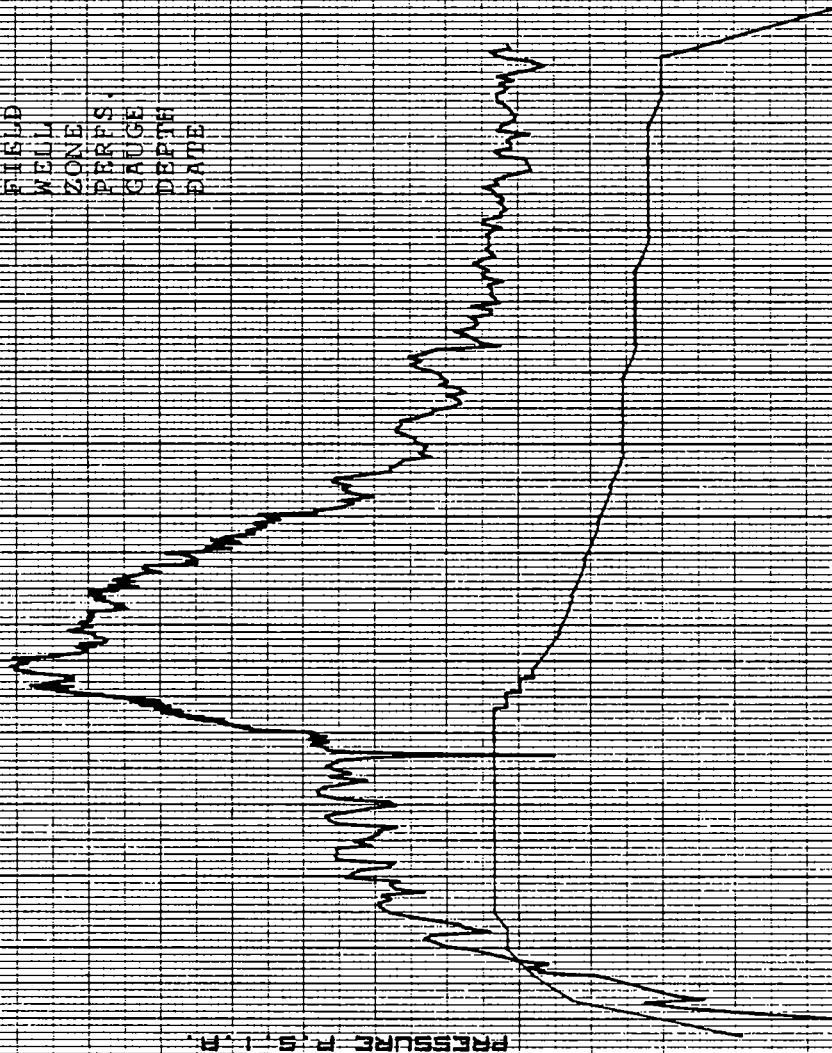
TEMPERATURE DEG F

PRESSURE PSI

TIME (HOURS)

3288
3286
3284
3282
3280
3278
3276
3274

3
4
5



FLOPETROL HIGH ACCURACY PRESSURE MEASUREMENT CHORNER PLOT

CLIENT : NORSKE STELL
 FIELD : TROLL
 WELL : BL12-1B
 ZONE : JURASSIC
 PERES : SANDSTONE
 : 1801-1807
 : M AHDD
 GAUGE : TPT 82404
 DEPTH : 1777 M AHDD
 DATE : 25TH FEB. 84
 SHUT-IN TIME: 02:00:10
 FLOWTIME T: 17 HR 10 MIN

2268

2266

2264

2262

2260

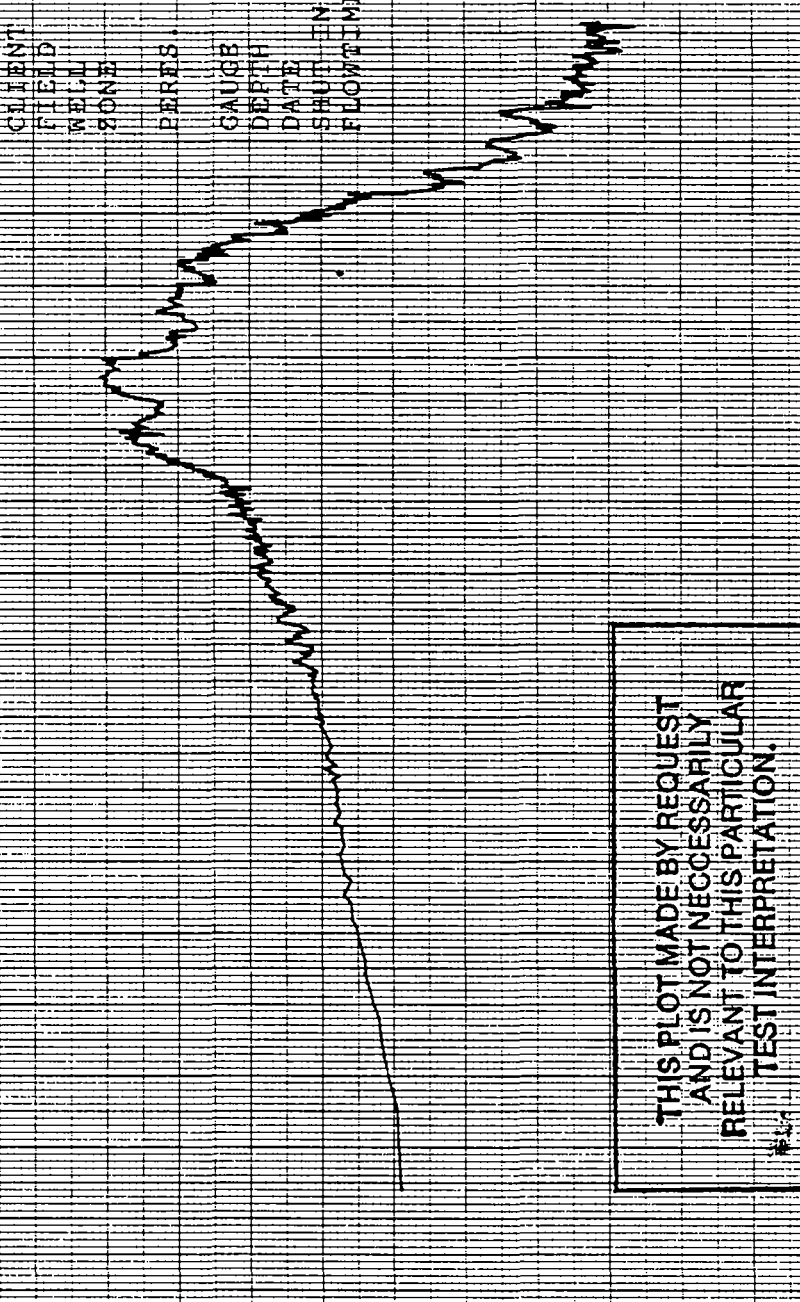
2278

2276

2274

2272

PRESSURE P. S. I. M.

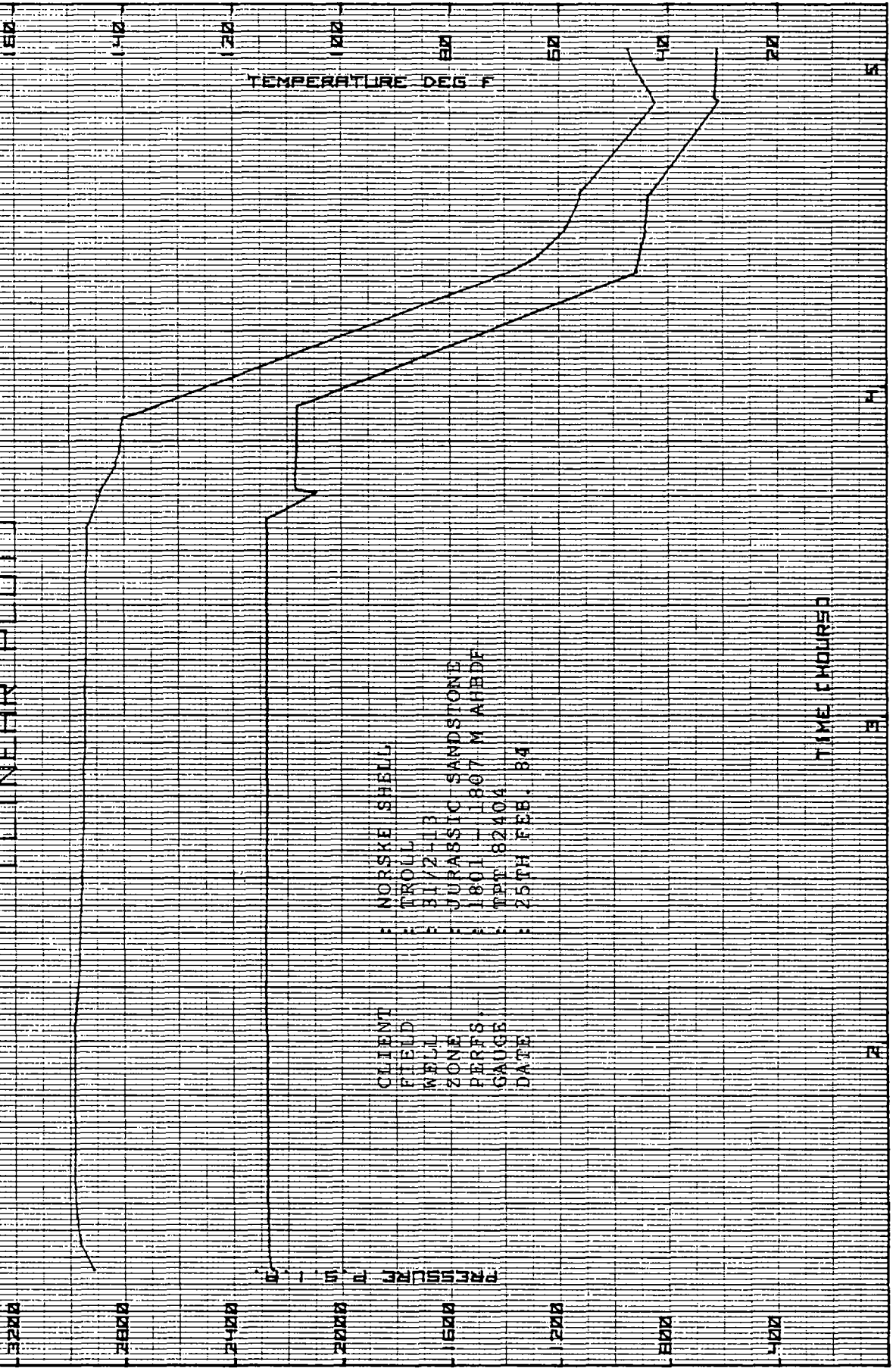


THIS PLOT MADE BY REQUEST
AND IS NOT NECESSARILY
RELEVANT TO THIS PARTICULAR
TEST INTERPRETATION.

$\frac{\Delta T + \text{DELTA T}}{\text{DELTA T}}$

2

HIGH ACCURACY PRESSURE MEASUREMENT CONTROL NEAR PLUGS



CLIENT : NORSE SHELL
FIELD : TROLL
WELL : 31/2-13
ZONE : JURASSIC SANDSTONE
PERFS : 1801 - 1807 M AHBDE
GAUGE : TPT 82104
DATE : 25TH FEB. 84

TIME (HOURS)

5

F L O P E T R O L

SECTION 3

PAGE 1

PRESSURE & TEMPERATURE CALCULATIONS

DATE 25.02.84

TIME HR.MM.SS	PRES. PSIA	TEMP. DEG.F	DEL.T HRS	LOG DEL.T	DEL.P PSI	LOG DEL.P	LOG $\frac{T+DEL.T}{DEL.T}$
1.20. 0	2274.32	145.9					
1.20.30	2274.97	145.9					
1.21. 0	2275.73	145.9					
1.21.30	2276.31	145.9					
1.22. 0	2276.86	145.9					
1.22.30	2277.24	145.9					
1.23. 0	2276.46	148.3					
1.23.30	2276.82	148.3					
1.24. 0	2277.01	148.8					
1.24.30	2277.20	148.8					
1.25. 0	2277.40	148.8					
1.25.30	2277.59	148.8					
1.26. 0	2277.78	148.8					
1.26.30	2278.17	148.8					
1.27. 0	2278.67	148.8					
1.27.30	2278.86	148.8					
1.28. 0	2278.62	148.8					
1.28.30	2279.02	148.8					
1.29. 0	2279.23	149.2					
1.29.30	2279.45	149.2					
1.30. 0	2279.66	149.2					
1.30.30	2280.01	149.2					
1.31. 0	2280.18	149.2					
1.31.30	2280.33	149.2					
1.32. 0	2280.25	149.2					
1.32.30	2279.44	149.2					
1.33. 0	2279.75	149.2					
1.33.30	2279.85	149.2					
1.34. 0	2280.14	149.4					
1.34.30	2280.44	149.4					
1.35. 0	2280.74	149.4					
1.35.30	2280.88	149.4					
1.36. 0	2280.97	149.4					
1.36.30	2280.99	149.4					
1.37. 0	2280.81	149.4					
1.37.30	2280.93	149.4					
1.38. 0	2280.37	149.4					
1.38.30	2280.75	149.4					
1.39. 0	2280.82	149.4					
1.39.30	2280.71	149.4					
1.40. 0	2281.43	149.4					
1.40.30	2281.36	149.4					
1.41. 0	2281.25	149.4					
1.41.30	2280.84	149.4					
1.42. 0	2280.77	149.4					
1.42.30	2281.52	149.4					
1.43. 0	2281.58	149.4					
1.43.30	2281.56	149.4					
1.44. 0	2281.55	149.4					
1.44.30	2281.09	149.4					
1.45. 0	2281.29	149.4					
1.45.30	2281.10	149.4					
1.46. 0	2280.98	149.4					

WELL FLOWING AT 12/64" choke.

GAUGE : TPT 82404

DEPTH : 1777 m AHBDF

F L O P E T R O L

SECTION 3

PAGE 2

PRESSURE & TEMPERATURE CALCULATIONS

DATE 25.02.84

TIME HR.MM.SS	PRES. PSIA	TEMP. DEG.F	DEL.T HRS	LOG DEL.T	DEL.P PSI	LOG DEL.P	LOG T+DEL.T DEL.T
1.46.30	2280.98	149.4					
1.47.0	2280.74	149.4					
1.47.30	2281.54	149.4					
1.48.0	2281.67	149.4					
1.48.30	2281.71	149.4					
1.49.0	2281.45	149.4					
1.49.30	2281.15	149.4					
1.50.0	2280.75	149.4					
1.50.30	2280.81	149.4					
1.51.0	2281.56	149.4					
1.51.30	2281.79	149.4					
1.52.0	2281.83	149.4					
1.52.30	2281.76	149.4					
1.53.0	2281.48	149.4					
1.53.30	2281.15	149.4					
1.54.0	2281.65	149.4					
1.54.30	2281.39	149.4					
1.55.0	2281.58	149.4					
1.55.30	2281.69	149.4					
1.56.0	2281.58	149.4					
1.56.30	2281.28	149.4					
1.57.0	2278.53	149.4					
1.57.30	2281.44	149.4					
1.58.0	2281.71	149.4					
1.58.30	2281.90	149.4					
1.59.0	2281.79	149.4					
1.59.30	2281.72	149.4					
2.0.0	2281.90	149.4					
2.0.2	2281.87	149.4					
2.0.4	2281.95	149.4					
2.0.6	2281.93	149.4					
2.0.8	2281.88	149.4					

5

6

7

SHUT-IN TIME: 2.0010 FINAL FLOWING PRES.: 2281.88 FLOW TIME: 17.167HRS

2.0.10	2281.88	149.4	0.0000	0.0000	0.00	0.0000	0.0000
2.0.12	2281.91	149.4	0.0006	-3.2553	0.03	-1.5229	4.4900
2.0.14	2281.97	149.4	0.0011	-2.9542	0.09	-1.0458	4.1890
2.0.16	2282.09	149.4	0.0017	-2.7782	0.21	-0.6778	4.0129
2.0.18	2282.22	149.4	0.0022	-2.6532	0.34	-0.4685	3.8880
2.0.20	2282.33	149.4	0.0028	-2.5563	0.45	-0.3488	3.7911
2.0.22	2282.44	149.4	0.0033	-2.4771	0.56	-0.2518	3.7119
2.0.24	2282.47	149.4	0.0039	-2.4102	0.59	-0.2291	3.6450
2.0.26	2282.55	149.4	0.0044	-2.3522	0.67	-0.1739	3.5870
2.0.28	2282.61	149.4	0.0050	-2.3010	0.73	-0.1367	3.5358
2.0.30	2282.72	149.4	0.0056	-2.2553	0.84	-0.0757	3.4901
2.0.32	2282.64	149.4	0.0061	-2.2139	0.76	-0.1192	3.4487
2.0.34	2282.74	149.4	0.0067	-2.1761	0.86	-0.0655	3.4109
2.0.36	2282.78	149.4	0.0072	-2.1413	0.90	-0.0458	3.3762
2.0.38	2282.73	149.4	0.0078	-2.1091	0.85	-0.0706	3.3440
2.0.40	2282.76	149.4	0.0083	-2.0792	0.88	-0.0555	3.3141
2.0.42	2282.85	149.4	0.0089	-2.0512	0.97	-0.0132	3.2861

F L O P E T R O L

SECTION 3

PAGE 3

PRESSURE & TEMPERATURE CALCULATIONS

DATE 25.02.84

TIME HR. MM. SS	PRES. PSIA	TEMP. DEG. F	DEL. T HRS	LOG DEL. T	DEL. P PSI	LOG DEL. P	LOG T+DEL. T DEL. T	
2. 0.44	2282.79	149.4	0.0094	-2.0248	0.91	-0.0410	3.2597	7
2. 0.46	2282.84	149.4	0.0100	-2.0000	0.96	-0.0177	3.2349	
2. 0.48	2282.82	149.4	0.0106	-1.9765	0.94	-0.0269	3.2115	
2. 0.50	2282.83	149.4	0.0111	-1.9542	0.95	-0.0223	3.1892	
2. 0.52	2282.88	149.4	0.0117	-1.9331	1.00	0.0000	3.1680	
2. 0.54	2282.89	149.4	0.0122	-1.9128	1.01	0.0043	3.1478	
2. 0.56	2282.85	149.4	0.0128	-1.8935	0.97	-0.0132	3.1286	
2. 0.58	2282.95	149.4	0.0133	-1.8751	1.07	0.0294	3.1101	
2. 1. 0	2282.94	149.4	0.0139	-1.8573	1.06	0.0253	3.0924	
2. 1. 2	2282.90	149.4	0.0144	-1.8403	1.02	0.0086	3.0754	
2. 1. 4	2282.94	149.4	0.0150	-1.8239	1.06	0.0253	3.0590	8
2. 1. 6	2282.97	149.4	0.0156	-1.8081	1.09	0.0374	3.0432	
2. 1. 8	2283.01	149.4	0.0161	-1.7929	1.13	0.0531	3.0280	
2. 1.10	2283.03	149.4	0.0167	-1.7782	1.15	0.0607	3.0133	
2. 1.12	2283.10	149.4	0.0172	-1.7639	1.22	0.0864	2.9990	
2. 1.14	2283.07	149.4	0.0178	-1.7501	1.19	0.0755	2.9853	
2. 1.16	2283.08	149.4	0.0183	-1.7368	1.20	0.0792	2.9719	
2. 1.18	2283.08	149.4	0.0189	-1.7238	1.20	0.0792	2.9590	
2. 1.20	2283.08	149.4	0.0194	-1.7112	1.20	0.0792	2.9464	
2. 1.22	2283.10	149.4	0.0200	-1.6990	1.22	0.0864	2.9342	
2. 1.24	2283.17	149.4	0.0206	-1.6871	1.29	0.1106	2.9223	
2. 1.26	2283.13	149.4	0.0211	-1.6755	1.25	0.0969	2.9107	
2. 1.28	2283.16	149.4	0.0217	-1.6642	1.28	0.1072	2.8994	
2. 1.30	2283.16	149.4	0.0222	-1.6532	1.28	0.1072	2.8885	
2. 1.32	2283.21	149.4	0.0228	-1.6425	1.33	0.1239	2.8778	
2. 1.34	2283.10	149.4	0.0233	-1.6320	1.22	0.0864	2.8673	
2. 1.36	2283.21	149.4	0.0239	-1.6218	1.33	0.1239	2.8571	
2. 1.38	2283.30	149.4	0.0244	-1.6118	1.42	0.1523	2.8471	
2. 1.40	2283.37	149.4	0.0250	-1.6021	1.49	0.1732	2.8374	
2. 1.42	2283.26	149.4	0.0256	-1.5925	1.38	0.1399	2.8278	
2. 1.44	2283.29	149.4	0.0261	-1.5832	1.41	0.1492	2.8185	
2. 1.46	2283.16	149.4	0.0267	-1.5740	1.29	0.1106	2.8094	
2. 1.48	2283.20	149.4	0.0272	-1.5651	1.32	0.1206	2.8005	
2. 1.50	2283.45	149.4	0.0278	-1.5563	1.57	0.1959	2.7917	
2. 1.52	2283.52	149.4	0.0283	-1.5477	1.64	0.2148	2.7831	
2. 1.54	2283.39	149.4	0.0289	-1.5393	1.51	0.1790	2.7747	
2. 1.56	2283.41	149.4	0.0294	-1.5310	1.53	0.1847	2.7664	
2. 1.58	2283.36	149.4	0.0300	-1.5229	1.48	0.1703	2.7583	
2. 2. 0	2283.23	149.4	0.0306	-1.5149	1.35	0.1303	2.7504	
2. 2. 2	2283.32	149.4	0.0311	-1.5071	1.44	0.1584	2.7426	
2. 2. 4	2283.51	149.4	0.0317	-1.4994	1.63	0.2122	2.7349	
2. 2. 6	2283.63	149.4	0.0322	-1.4918	1.75	0.2430	2.7273	
2. 2. 8	2283.64	149.4	0.0328	-1.4844	1.76	0.2455	2.7199	
2. 2.10	2283.53	149.4	0.0333	-1.4771	1.65	0.2175	2.7126	
2. 2.12	2283.50	149.4	0.0339	-1.4699	1.62	0.2095	2.7055	9
2. 2.14	2283.41	149.4	0.0344	-1.4629	1.53	0.1847	2.6984	
2. 2.16	2283.46	149.4	0.0350	-1.4559	1.58	0.1987	2.6915	
2. 2.18	2283.49	149.4	0.0356	-1.4491	1.61	0.2068	2.6847	
2. 2.20	2283.65	149.4	0.0361	-1.4424	1.77	0.2480	2.6780	
2. 2.22	2283.64	149.4	0.0367	-1.4357	1.76	0.2455	2.6713	
2. 2.24	2283.68	149.4	0.0372	-1.4292	1.80	0.2553	2.6648	
2. 2.26	2283.70	149.4	0.0378	-1.4228	1.82	0.2601	2.6584	
2. 2.28	2283.61	149.4	0.0383	-1.4164	1.73	0.2380	2.6521	

F L O P E T R O L

SECTION 3

PAGE 4

PRESSURE & TEMPERATURE CALCULATIONS

DATE 25.02.84

TIME HR. MM. SS	PRES. PSIA	TEMP. DEG. F	DEL. T HRS	LOG DEL. T	DEL. P PSI	LOG DEL. P	LOG T+DEL. T DEL T
2. 2. 30	2283.68	149.4	0.0389	-1.4182	1.88	0.2553	2.6458
2. 2. 32	2283.72	149.4	0.0394	-1.4040	1.84	0.2648	2.6397
2. 2. 34	2283.76	149.4	0.0400	-1.3979	1.88	0.2742	2.6336
2. 2. 36	2283.79	149.4	0.0406	-1.3919	1.92	0.2833	2.6277
2. 2. 38	2283.78	149.4	0.0411	-1.3860	1.90	0.2788	2.6218
2. 2. 40	2283.75	149.4	0.0417	-1.3802	1.87	0.2718	2.6160
2. 2. 42	2283.83	149.4	0.0422	-1.3745	1.95	0.2900	2.6102
2. 2. 44	2283.89	149.4	0.0428	-1.3688	2.01	0.3032	2.6045
2. 2. 46	2283.91	149.4	0.0433	-1.3632	2.03	0.3075	2.5990
2. 2. 48	2283.76	149.4	0.0439	-1.3576	1.88	0.2742	2.5934
2. 2. 50	2283.82	149.4	0.0444	-1.3522	1.94	0.2878	2.5880
2. 2. 52	2283.84	149.4	0.0450	-1.3468	1.96	0.2923	2.5826
2. 2. 54	2283.94	149.4	0.0456	-1.3415	2.06	0.3139	2.5773
2. 2. 56	2283.86	149.4	0.0461	-1.3362	1.98	0.2967	2.5720
2. 2. 58	2283.74	149.4	0.0467	-1.3310	1.87	0.2718	2.5669
2. 3. 0	2283.75	149.4	0.0472	-1.3259	1.87	0.2718	2.5617
2. 3. 2	2283.77	149.4	0.0478	-1.3208	1.89	0.2765	2.5567
2. 3. 4	2283.79	149.4	0.0483	-1.3158	1.91	0.2810	2.5517
2. 3. 6	2283.90	149.4	0.0489	-1.3108	2.02	0.3054	2.5467
2. 3. 8	2283.95	149.4	0.0494	-1.3059	2.07	0.3160	2.5418
2. 3. 10	2283.81	149.4	0.0500	-1.3010	1.93	0.2856	2.5370
2. 3. 12	2283.84	149.4	0.0506	-1.2962	1.96	0.2923	2.5322
2. 3. 14	2283.96	149.4	0.0511	-1.2915	2.08	0.3181	2.5275
2. 3. 16	2283.82	149.4	0.0517	-1.2868	1.94	0.2878	2.5228
2. 3. 18	2283.81	149.4	0.0522	-1.2821	1.93	0.2856	2.5181
2. 3. 20	2283.87	149.4	0.0528	-1.2775	1.99	0.2989	2.5136
2. 3. 22	2283.90	149.4	0.0533	-1.2730	2.02	0.3054	2.5090
2. 3. 24	2283.88	149.4	0.0539	-1.2685	2.00	0.3010	2.5045
2. 3. 26	2284.06	149.4	0.0544	-1.2640	2.18	0.3385	2.5001
2. 3. 28	2284.01	149.4	0.0550	-1.2596	2.13	0.3284	2.4957
2. 3. 30	2283.92	149.4	0.0556	-1.2553	2.04	0.3096	2.4914
2. 3. 32	2283.94	149.4	0.0561	-1.2510	2.06	0.3139	2.4871
2. 3. 34	2283.96	149.4	0.0567	-1.2467	2.09	0.3201	2.4828
2. 3. 36	2284.07	149.4	0.0572	-1.2424	2.19	0.3404	2.4786
2. 3. 38	2283.94	149.4	0.0578	-1.2382	2.06	0.3139	2.4744
2. 3. 40	2283.93	149.4	0.0583	-1.2341	2.05	0.3118	2.4702
2. 3. 42	2283.96	149.2	0.0589	-1.2300	2.08	0.3181	2.4661
2. 3. 44	2284.03	149.2	0.0594	-1.2259	2.15	0.3324	2.4621
2. 3. 46	2283.94	149.2	0.0600	-1.2218	2.06	0.3139	2.4580
2. 3. 48	2283.99	149.2	0.0606	-1.2178	2.11	0.3243	2.4541
2. 3. 50	2283.91	149.2	0.0611	-1.2139	2.03	0.3075	2.4501
2. 3. 52	2283.98	149.2	0.0617	-1.2099	2.10	0.3222	2.4462
2. 3. 54	2284.09	149.2	0.0622	-1.2061	2.21	0.3444	2.4423
2. 3. 56	2284.10	149.2	0.0628	-1.2022	2.22	0.3464	2.4385
2. 3. 58	2284.27	149.2	0.0633	-1.1984	2.39	0.3784	2.4347
2. 4. 0	2284.13	149.2	0.0639	-1.1946	2.25	0.3522	2.4309
2. 4. 2	2284.13	149.2	0.0644	-1.1908	2.25	0.3522	2.4271
2. 4. 4	2284.15	149.2	0.0650	-1.1871	2.27	0.3560	2.4234
2. 4. 6	2284.03	149.2	0.0656	-1.1834	2.15	0.3324	2.4197
2. 4. 8	2284.10	149.2	0.0661	-1.1797	2.22	0.3464	2.4161
2. 4. 10	2284.22	149.2	0.0667	-1.1761	2.34	0.3692	2.4125
2. 4. 12	2284.15	149.2	0.0672	-1.1725	2.27	0.3560	2.4089
2. 4. 14	2284.18	149.2	0.0678	-1.1689	2.30	0.3617	2.4053

9

10

F L O P E T R O L

SECTION 3

PAGE 5

PRESSURE & TEMPERATURE CALCULATIONS

DATE 25.02.84

TIME HR. MM. SS	PRES. PSIA	TEMP. DEG. F	DEL. T HRS	LOG DEL. T	DEL. P PSI	LOG DEL. P	LOG $\frac{T+DEL. T}{DEL. T}$	
2. 4.16	2284.03	149.2	0.0683	-1.1654	2.15	0.3324	2.4018	10
2. 4.18	2284.22	149.2	0.0689	-1.1619	2.34	0.3692	2.3983	
2. 4.20	2284.20	149.2	0.0694	-1.1584	2.32	0.3655	2.3948	
2. 4.22	2284.13	149.2	0.0700	-1.1549	2.25	0.3522	2.3914	
2. 4.24	2284.24	149.2	0.0706	-1.1515	2.36	0.3729	2.3879	
2. 4.26	2284.25	149.2	0.0711	-1.1481	2.37	0.3747	2.3845	
2. 4.28	2284.23	149.2	0.0717	-1.1447	2.36	0.3729	2.3812	
2. 4.30	2284.22	149.2	0.0722	-1.1413	2.34	0.3692	2.3778	11
2. 4.32	2284.42	149.2	0.0728	-1.1380	2.54	0.4048	2.3745	
2. 4.34	2284.34	149.2	0.0733	-1.1347	2.46	0.3909	2.3712	
2. 4.36	2284.26	149.2	0.0739	-1.1314	2.38	0.3766	2.3680	
2. 4.38	2284.03	149.2	0.0744	-1.1282	2.15	0.3324	2.3647	
2. 4.40	2284.10	149.2	0.0750	-1.1249	2.22	0.3464	2.3615	
2. 4.42	2284.31	149.2	0.0756	-1.1217	2.43	0.3856	2.3583	
2. 4.44	2284.37	149.2	0.0761	-1.1186	2.49	0.3962	2.3552	
2. 4.46	2284.35	149.2	0.0767	-1.1154	2.48	0.3945	2.3520	
2. 4.48	2284.34	149.2	0.0772	-1.1123	2.46	0.3909	2.3489	
2. 4.50	2284.33	149.2	0.0778	-1.1091	2.45	0.3892	2.3458	
2. 4.52	2284.37	149.2	0.0783	-1.1061	2.49	0.3962	2.3427	
2. 4.54	2284.42	149.2	0.0789	-1.1030	2.54	0.4048	2.3397	
2. 4.56	2284.37	149.2	0.0794	-1.0999	2.49	0.3962	2.3366	
2. 4.58	2284.39	149.2	0.0800	-1.0969	2.51	0.3997	2.3336	
2. 5. 0	2284.45	149.2	0.0806	-1.0939	2.57	0.4099	2.3306	
2. 5. 2	2284.55	149.2	0.0811	-1.0909	2.67	0.4265	2.3277	
2. 5. 4	2284.64	149.2	0.0817	-1.0880	2.76	0.4409	2.3247	
2. 5. 6	2284.66	149.2	0.0822	-1.0850	2.78	0.4440	2.3218	
2. 5. 8	2284.53	149.2	0.0828	-1.0821	2.65	0.4232	2.3189	
2. 5.10	2284.59	149.2	0.0833	-1.0792	2.71	0.4330	2.3160	
2. 5.12	2284.64	149.2	0.0839	-1.0763	2.76	0.4409	2.3131	
2. 5.14	2284.72	149.2	0.0844	-1.0734	2.84	0.4533	2.3102	
2. 5.16	2284.82	149.2	0.0850	-1.0706	2.94	0.4683	2.3074	
2. 5.18	2284.83	149.2	0.0856	-1.0678	2.95	0.4698	2.3046	
2. 5.20	2284.87	149.2	0.0861	-1.0649	2.99	0.4757	2.3018	
2. 5.22	2284.94	149.2	0.0867	-1.0621	3.06	0.4857	2.2990	
2. 5.24	2284.84	149.2	0.0872	-1.0594	2.96	0.4713	2.2963	
2. 5.26	2284.93	149.2	0.0878	-1.0566	3.05	0.4843	2.2935	
2. 5.28	2285.10	149.2	0.0883	-1.0539	3.22	0.5079	2.2908	
2. 5.30	2285.17	149.2	0.0889	-1.0512	3.29	0.5172	2.2881	
2. 5.32	2285.10	149.2	0.0894	-1.0484	3.22	0.5079	2.2854	
2. 5.34	2285.03	149.2	0.0900	-1.0458	3.15	0.4983	2.2827	
2. 5.36	2285.12	149.2	0.0906	-1.0431	3.24	0.5105	2.2801	
2. 5.38	2285.19	149.2	0.0911	-1.0404	3.31	0.5198	2.2774	
2. 5.40	2285.27	149.2	0.0917	-1.0378	3.39	0.5302	2.2748	12
2. 5.42	2285.30	149.2	0.0922	-1.0352	3.42	0.5340	2.2722	
2. 5.44	2285.26	149.0	0.0928	-1.0326	3.38	0.5289	2.2696	
2. 5.46	2285.39	149.0	0.0933	-1.0300	3.51	0.5453	2.2670	
2. 5.48	2285.46	149.0	0.0939	-1.0274	3.58	0.5539	2.2644	
2. 5.50	2285.36	149.0	0.0944	-1.0248	3.48	0.5416	2.2619	
2. 5.52	2285.40	149.0	0.0950	-1.0223	3.52	0.5465	2.2594	
2. 5.54	2285.41	149.0	0.0956	-1.0197	3.53	0.5478	2.2568	
2. 5.56	2285.32	149.0	0.0961	-1.0172	3.44	0.5366	2.2543	
2. 5.58	2285.35	149.0	0.0967	-1.0147	3.47	0.5403	2.2518	
2. 6. 0	2285.36	149.0	0.0972	-1.0122	3.48	0.5416	2.2494	

F L O P E T R O L

SECTION 3

PAGE 6

PRESSURE & TEMPERATURE CALCULATIONS

DATE 25.02.84

TIME HR. MM. SS	PRES. PSIA	TEMP. DEG. F	DEL. T HRS	LOG DEL. T	DEL. F PSI	LOG DEL. F	LOG T+DEL. T DEL. T
2. 6. 2	2285.39	149.0	0.0978	-1.0098	3.51	0.5453	2.2469
2. 6. 4	2285.41	149.0	0.0983	-1.0073	3.53	0.5478	2.2445
2. 6. 6	2285.51	149.0	0.0989	-1.0049	3.63	0.5599	2.2420
2. 6. 8	2285.59	149.0	0.0994	-1.0024	3.71	0.5694	2.2396
2. 6.10	2285.61	149.0	0.1000	-1.0000	3.73	0.5717	2.2372
2. 6.12	2285.65	149.0	0.1006	-0.9976	3.77	0.5763	2.2348
2. 6.14	2285.62	149.0	0.1011	-0.9952	3.74	0.5729	2.2324
2. 6.16	2285.63	149.0	0.1017	-0.9928	3.75	0.5740	2.2301
2. 6.18	2285.66	149.0	0.1022	-0.9905	3.78	0.5775	2.2277
2. 6.20	2285.63	149.0	0.1028	-0.9881	3.75	0.5740	2.2254
2. 6.22	2285.75	149.0	0.1033	-0.9858	3.87	0.5877	2.2231
2. 6.24	2285.59	149.0	0.1039	-0.9834	3.71	0.5694	2.2207
2. 6.26	2285.64	149.0	0.1044	-0.9811	3.76	0.5752	2.2184
2. 6.28	2285.67	149.0	0.1050	-0.9788	3.79	0.5786	2.2161
2. 6.30	2285.41	149.0	0.1056	-0.9765	3.53	0.5478	2.2139
2. 6.32	2285.29	149.0	0.1061	-0.9742	3.41	0.5328	2.2116
2. 6.34	2285.45	149.0	0.1067	-0.9720	3.57	0.5527	2.2093
2. 6.36	2285.74	149.0	0.1072	-0.9697	3.86	0.5866	2.2071
2. 6.38	2285.80	149.0	0.1078	-0.9675	3.92	0.5933	2.2049
2. 6.40	2285.74	149.0	0.1083	-0.9652	3.86	0.5866	2.2027
2. 6.42	2285.57	149.0	0.1089	-0.9630	3.69	0.5670	2.2004
2. 6.44	2285.58	149.0	0.1094	-0.9608	3.70	0.5682	2.1983
2. 6.46	2285.52	149.0	0.1100	-0.9586	3.64	0.5611	2.1961
2. 6.48	2285.44	149.0	0.1106	-0.9564	3.56	0.5514	2.1939
2. 6.50	2285.48	149.0	0.1111	-0.9542	3.60	0.5563	2.1917
2. 6.52	2285.53	149.0	0.1117	-0.9521	3.65	0.5623	2.1896
2. 6.54	2285.60	149.0	0.1122	-0.9499	3.72	0.5705	2.1874
2. 6.56	2285.60	149.0	0.1128	-0.9478	3.72	0.5705	2.1853
2. 6.58	2285.64	149.0	0.1133	-0.9456	3.76	0.5752	2.1832
2. 7. 0	2285.61	149.0	0.1139	-0.9435	3.73	0.5717	2.1811
2. 7. 2	2285.55	149.0	0.1144	-0.9414	3.67	0.5647	2.1790
2. 7. 4	2285.56	149.0	0.1150	-0.9393	3.68	0.5658	2.1769
2. 7. 6	2285.55	149.0	0.1156	-0.9372	3.67	0.5647	2.1748
2. 7. 8	2285.49	149.0	0.1161	-0.9351	3.61	0.5575	2.1727
2. 7.10	2285.48	149.0	0.1167	-0.9331	3.60	0.5563	2.1707
2. 7.12	2285.47	149.0	0.1172	-0.9310	3.59	0.5551	2.1686
2. 7.14	2285.41	149.0	0.1178	-0.9289	3.53	0.5478	2.1666
2. 7.16	2285.46	149.0	0.1183	-0.9269	3.58	0.5539	2.1646
2. 7.18	2285.39	149.0	0.1189	-0.9249	3.51	0.5453	2.1625
2. 7.20	2285.35	149.0	0.1194	-0.9228	3.47	0.5403	2.1605
2. 7.22	2285.35	149.0	0.1200	-0.9208	3.47	0.5403	2.1585
2. 7.24	2285.33	149.0	0.1206	-0.9188	3.45	0.5378	2.1565
2. 7.26	2285.27	149.0	0.1211	-0.9168	3.39	0.5302	2.1546
2. 7.28	2285.30	149.0	0.1217	-0.9148	3.42	0.5340	2.1526
2. 7.30	2285.29	149.0	0.1222	-0.9128	3.41	0.5328	2.1506
2. 7.32	2285.31	149.0	0.1228	-0.9109	3.43	0.5353	2.1487
2. 7.34	2285.32	149.0	0.1233	-0.9089	3.44	0.5366	2.1467
2. 7.36	2285.34	149.0	0.1239	-0.9070	3.46	0.5391	2.1448
2. 7.38	2285.30	149.0	0.1244	-0.9050	3.42	0.5340	2.1428
2. 7.40	2285.33	149.0	0.1250	-0.9031	3.45	0.5378	2.1409
2. 7.42	2285.28	149.0	0.1256	-0.9012	3.40	0.5315	2.1390
2. 7.44	2285.29	148.8	0.1261	-0.8992	3.41	0.5328	2.1371
2. 7.46	2285.25	148.8	0.1267	-0.8973	3.37	0.5276	2.1352

12

13

F L O P E T R O L

SECTION 3

PAGE 7

PRESSURE & TEMPERATURE CALCULATIONS

DATE 25.02.84

TIME HR. MM. SS	PRES. PSIA	TEMP. DEG. F	DEL. T HRS	LOG DEL. T	DEL. P PSI	LOG DEL. P	LOG <u>T+DEL. T</u> DELT	
2. 7. 48	2285.23	148.8	0.1272	-0.8954	3.35	0.5250	2.1333	13
2. 7. 50	2285.23	148.8	0.1278	-0.8935	3.35	0.5250	2.1315	
2. 7. 52	2285.23	148.8	0.1283	-0.8917	3.35	0.5250	2.1296	
2. 7. 54	2285.24	148.8	0.1289	-0.8898	3.36	0.5263	2.1277	
2. 7. 56	2285.26	148.8	0.1294	-0.8879	3.38	0.5289	2.1259	
2. 7. 58	2285.23	148.8	0.1300	-0.8861	3.35	0.5250	2.1240	
2. 8. 0	2285.29	148.8	0.1306	-0.8842	3.41	0.5328	2.1222	14
2. 8. 2	2285.32	148.8	0.1311	-0.8824	3.44	0.5366	2.1204	
2. 8. 4	2285.35	148.8	0.1317	-0.8805	3.47	0.5403	2.1185	
2. 8. 6	2285.41	148.8	0.1322	-0.8787	3.53	0.5478	2.1167	
2. 8. 8	2285.47	148.8	0.1328	-0.8769	3.59	0.5551	2.1149	
2. 8. 10	2285.54	148.8	0.1333	-0.8751	3.66	0.5635	2.1131	
2. 8. 12	2285.61	148.8	0.1339	-0.8733	3.73	0.5717	2.1113	
2. 8. 14	2285.64	148.8	0.1344	-0.8715	3.76	0.5752	2.1095	
2. 8. 16	2285.68	148.8	0.1350	-0.8697	3.80	0.5798	2.1078	
2. 8. 18	2285.73	148.8	0.1356	-0.8679	3.85	0.5855	2.1060	
2. 8. 20	2285.78	148.8	0.1361	-0.8661	3.90	0.5911	2.1042	
2. 8. 22	2285.81	148.8	0.1367	-0.8643	3.93	0.5944	2.1025	
2. 8. 24	2285.77	148.8	0.1372	-0.8626	3.89	0.5899	2.1007	
2. 8. 26	2285.79	148.8	0.1378	-0.8608	3.91	0.5922	2.0990	
2. 8. 28	2285.86	148.8	0.1383	-0.8591	3.98	0.5999	2.0972	
2. 8. 30	2285.87	148.8	0.1389	-0.8573	3.99	0.6010	2.0955	
2. 8. 32	2285.89	148.8	0.1394	-0.8556	4.01	0.6031	2.0938	
2. 8. 34	2285.91	148.8	0.1400	-0.8539	4.03	0.6053	2.0921	
2. 8. 36	2285.93	148.8	0.1406	-0.8522	4.05	0.6075	2.0904	
2. 8. 38	2285.87	148.8	0.1411	-0.8504	3.99	0.6010	2.0887	
2. 8. 40	2285.85	148.8	0.1417	-0.8487	3.97	0.5988	2.0870	
2. 8. 42	2285.90	148.8	0.1422	-0.8470	4.02	0.6042	2.0853	
2. 8. 44	2285.87	148.8	0.1428	-0.8453	3.99	0.6010	2.0836	
2. 8. 46	2285.90	148.8	0.1433	-0.8437	4.02	0.6042	2.0819	
2. 8. 48	2285.92	148.8	0.1439	-0.8420	4.04	0.6064	2.0803	
2. 8. 50	2285.99	148.8	0.1444	-0.8403	4.11	0.6138	2.0786	
2. 8. 52	2286.02	148.8	0.1450	-0.8386	4.14	0.6170	2.0770	
2. 8. 54	2286.03	148.8	0.1456	-0.8370	4.15	0.6180	2.0753	
2. 8. 56	2286.04	148.8	0.1461	-0.8353	4.16	0.6191	2.0737	
2. 8. 58	2286.04	148.8	0.1467	-0.8337	4.16	0.6191	2.0720	
2. 9. 0	2286.05	148.8	0.1472	-0.8320	4.17	0.6201	2.0704	
2. 9. 2	2286.04	148.8	0.1478	-0.8304	4.16	0.6191	2.0688	
2. 9. 4	2286.03	148.8	0.1483	-0.8288	4.15	0.6180	2.0672	
2. 9. 6	2286.03	148.8	0.1489	-0.8271	4.15	0.6180	2.0656	
2. 9. 8	2286.02	148.8	0.1494	-0.8255	4.14	0.6170	2.0640	
2. 9. 10	2286.01	148.8	0.1500	-0.8239	4.13	0.6160	2.0624	
2. 9. 12	2286.02	148.8	0.1506	-0.8223	4.15	0.6180	2.0608	
2. 9. 14	2286.04	148.8	0.1511	-0.8207	4.16	0.6191	2.0592	
2. 9. 16	2286.05	148.8	0.1517	-0.8191	4.17	0.6201	2.0576	
2. 9. 18	2286.07	148.8	0.1522	-0.8175	4.19	0.6222	2.0560	
2. 9. 20	2286.08	148.8	0.1528	-0.8159	4.20	0.6232	2.0545	
2. 9. 22	2286.08	148.8	0.1533	-0.8144	4.20	0.6232	2.0529	
2. 9. 24	2286.06	148.8	0.1539	-0.8128	4.18	0.6212	2.0514	
2. 9. 26	2286.03	148.8	0.1544	-0.8112	4.15	0.6180	2.0498	
2. 9. 28	2286.01	148.8	0.1550	-0.8097	4.13	0.6160	2.0483	
2. 9. 30	2285.99	148.8	0.1556	-0.8081	4.11	0.6138	2.0467	
2. 9. 32	2285.99	148.8	0.1561	-0.8066	4.11	0.6138	2.0452	

F L O P E T R O L

SECTION 3

PAGE 8

PRESSURE & TEMPERATURE CALCULATIONS

DATE 25.02.84

TIME HR. MM. SS	PRES. PSIA	TEMP. DEG. F	DEL. T HRS	LOG DEL. T	DEL. P PSI	LOG DEL. P	LOG T+DEL. T DELT	
2. 9.34	2286.00	148.8	0.1567	-0.8050	4.12	0.6149	2.0437	14
2. 9.36	2286.00	148.8	0.1572	-0.8035	4.12	0.6149	2.0421	
2. 9.38	2286.01	148.8	0.1578	-0.8020	4.13	0.6160	2.0406	
2. 9.40	2286.01	148.8	0.1583	-0.8004	4.13	0.6160	2.0391	
2. 9.42	2285.98	148.8	0.1589	-0.7989	4.10	0.6128	2.0375	
2. 9.44	2285.95	148.8	0.1594	-0.7974	4.07	0.6096	2.0361	
2. 9.46	2285.92	148.8	0.1600	-0.7959	4.04	0.6064	2.0346	
2. 9.48	2285.89	148.8	0.1606	-0.7944	4.01	0.6031	2.0331	
2. 9.50	2285.86	148.8	0.1611	-0.7929	3.98	0.5999	2.0316	
2. 9.52	2285.87	148.8	0.1617	-0.7914	3.99	0.6010	2.0301	
2. 9.54	2285.88	148.8	0.1622	-0.7899	4.00	0.6021	2.0287	
2. 9.56	2285.90	148.8	0.1628	-0.7884	4.02	0.6042	2.0272	
2. 9.58	2285.91	148.8	0.1633	-0.7869	4.03	0.6053	2.0257	
2.10. 0	2285.92	148.8	0.1639	-0.7855	4.04	0.6064	2.0243	
2.10. 2	2285.93	148.8	0.1644	-0.7840	4.05	0.6075	2.0228	
2.10. 4	2285.94	148.8	0.1650	-0.7825	4.06	0.6085	2.0214	
2.10. 6	2285.96	148.8	0.1656	-0.7811	4.08	0.6107	2.0199	
2.10. 8	2285.97	148.8	0.1661	-0.7796	4.09	0.6117	2.0185	
2.10.10	2285.98	148.8	0.1667	-0.7782	4.10	0.6128	2.0170	
2.10.20	2285.91	148.8	0.1694	-0.7710	4.03	0.6053	2.0099	
2.10.30	2286.06	148.8	0.1722	-0.7639	4.18	0.6212	2.0029	
2.10.40	2285.45	148.8	0.1750	-0.7570	3.57	0.5527	1.9961	
2.10.50	2285.53	148.8	0.1778	-0.7501	3.65	0.5623	1.9893	
2.11. 0	2285.30	148.8	0.1806	-0.7434	3.42	0.5340	1.9826	
2.11.10	2285.14	148.8	0.1833	-0.7368	3.26	0.5132	1.9761	
2.11.20	2285.09	148.8	0.1861	-0.7302	3.21	0.5065	1.9696	15
2.11.30	2285.04	148.8	0.1889	-0.7238	3.16	0.4997	1.9632	
2.11.40	2285.08	148.8	0.1917	-0.7175	3.20	0.5051	1.9570	
2.11.50	2285.04	148.8	0.1944	-0.7112	3.16	0.4997	1.9508	
2.12. 0	2285.17	148.8	0.1972	-0.7050	3.29	0.5172	1.9447	
2.12.10	2284.93	148.8	0.2000	-0.6990	3.05	0.4843	1.9387	
2.12.20	2285.09	148.8	0.2028	-0.6930	3.21	0.5065	1.9328	
2.12.30	2285.13	148.8	0.2056	-0.6871	3.25	0.5119	1.9269	
2.12.40	2284.80	148.8	0.2083	-0.6812	2.92	0.4654	1.9212	
2.12.50	2284.76	148.8	0.2111	-0.6755	2.88	0.4594	1.9155	
2.13. 0	2284.75	148.8	0.2139	-0.6698	2.87	0.4579	1.9099	
2.13.10	2284.78	148.8	0.2167	-0.6642	2.90	0.4624	1.9043	
2.13.20	2284.80	148.8	0.2194	-0.6587	2.92	0.4654	1.8989	
2.13.30	2284.92	148.8	0.2222	-0.6532	3.04	0.4829	1.8935	
2.13.40	2284.93	148.8	0.2250	-0.6478	3.05	0.4843	1.8882	
2.13.50	2284.97	148.8	0.2278	-0.6425	3.09	0.4900	1.8829	
2.14. 0	2284.93	148.8	0.2306	-0.6372	3.05	0.4843	1.8777	
2.14.10	2285.21	148.5	0.2333	-0.6320	3.33	0.5224	1.8726	
2.14.20	2285.29	148.5	0.2361	-0.6269	3.41	0.5328	1.8675	
2.14.30	2285.19	148.5	0.2389	-0.6218	3.31	0.5198	1.8625	
2.14.40	2285.10	148.5	0.2417	-0.6168	3.22	0.5079	1.8575	
2.14.50	2284.98	148.5	0.2444	-0.6118	3.10	0.4914	1.8526	
2.15. 0	2285.05	148.5	0.2472	-0.6069	3.17	0.5011	1.8478	
2.15.10	2285.08	148.5	0.2500	-0.6021	3.20	0.5051	1.8430	
2.15.20	2285.13	148.5	0.2528	-0.5973	3.26	0.5132	1.8383	
2.15.30	2285.13	148.5	0.2556	-0.5925	3.25	0.5119	1.8336	
2.15.40	2284.99	148.5	0.2583	-0.5878	3.11	0.4928	1.8290	
2.15.50	2284.97	148.5	0.2611	-0.5832	3.09	0.4900	1.8244	

F L O P E T R O L

SECTION 3

PAGE 9

PRESSURE & TEMPERATURE CALCULATIONS

DATE 25.02.84

TIME HR. MM. SS	PRES. PSIA	TEMP. DEG. F	DEL. T HRS	LOG DEL. T	DEL. P PSI	LOG DEL. P	LOG T+DEL. T DELT	
2.16. 0	2285.03	148.5	0.2639	-0.5786	3.15	0.4983	1.8199	15
2.16.10	2284.97	148.5	0.2667	-0.5740	3.09	0.4900	1.8154	
2.16.20	2285.01	148.5	0.2694	-0.5695	3.13	0.4955	1.8110	
2.16.30	2284.95	148.5	0.2722	-0.5651	3.07	0.4871	1.8066	
2.16.40	2284.96	148.5	0.2750	-0.5607	3.08	0.4886	1.8023	
2.16.50	2285.01	148.5	0.2778	-0.5563	3.13	0.4955	1.7980	
2.17. 0	2285.03	148.5	0.2806	-0.5520	3.15	0.4983	1.7937	
2.17.10	2284.65	148.5	0.2833	-0.5477	2.77	0.4425	1.7895	
2.17.20	2284.48	148.5	0.2861	-0.5435	2.60	0.4150	1.7853	
2.17.30	2284.53	148.5	0.2889	-0.5393	2.65	0.4232	1.7812	
2.17.40	2284.64	148.5	0.2917	-0.5351	2.76	0.4409	1.7771	
2.17.50	2284.54	148.5	0.2944	-0.5310	2.66	0.4249	1.7731	
2.18. 0	2284.61	148.5	0.2972	-0.5269	2.73	0.4362	1.7691	
2.18.10	2284.70	148.5	0.3000	-0.5229	2.82	0.4502	1.7651	
2.18.20	2284.72	148.5	0.3028	-0.5189	2.84	0.4533	1.7612	
2.18.30	2284.79	148.5	0.3056	-0.5149	2.91	0.4639	1.7573	
2.18.40	2284.92	148.5	0.3083	-0.5110	3.04	0.4829	1.7534	
2.18.50	2284.82	148.5	0.3111	-0.5071	2.94	0.4683	1.7496	
2.19. 0	2284.78	148.5	0.3139	-0.5032	2.90	0.4624	1.7458	
2.19.10	2284.95	148.3	0.3167	-0.4994	3.07	0.4871	1.7420	
2.19.20	2285.00	148.3	0.3194	-0.4956	3.12	0.4942	1.7383	16
2.19.30	2284.95	148.3	0.3222	-0.4918	3.07	0.4871	1.7346	
2.19.40	2284.85	148.3	0.3250	-0.4881	2.97	0.4728	1.7309	
2.19.50	2284.97	148.3	0.3278	-0.4844	3.09	0.4900	1.7273	
2.20. 0	2284.61	148.3	0.3306	-0.4808	2.73	0.4362	1.7237	
2.20.30	2284.33	148.3	0.3389	-0.4699	2.45	0.3892	1.7131	
2.21. 0	2284.58	148.3	0.3472	-0.4594	2.70	0.4314	1.7028	
2.21.30	2284.61	148.3	0.3556	-0.4491	2.73	0.4362	1.6927	
2.22. 0	2284.40	148.3	0.3639	-0.4390	2.52	0.4014	1.6828	
2.22.30	2284.01	148.3	0.3722	-0.4292	2.13	0.3284	1.6732	
2.23. 0	2284.25	148.3	0.3806	-0.4196	2.37	0.3747	1.6638	
2.23.30	2283.71	148.3	0.3889	-0.4102	1.83	0.2625	1.6546	
2.24. 0	2283.64	148.3	0.3972	-0.4010	1.76	0.2455	1.6456	
2.24.30	2283.53	148.1	0.4056	-0.3919	1.65	0.2175	1.6368	
2.25. 0	2283.66	148.1	0.4139	-0.3831	1.78	0.2504	1.6281	
2.25.30	2283.39	148.1	0.4222	-0.3745	1.51	0.1790	1.6197	
2.26. 0	2283.36	148.1	0.4306	-0.3660	1.48	0.1703	1.6114	
2.26.30	2282.91	148.1	0.4389	-0.3576	1.03	0.0128	1.6033	
2.27. 0	2283.02	148.1	0.4472	-0.3495	1.14	0.0569	1.5953	
2.27.30	2282.96	148.1	0.4556	-0.3415	1.08	0.0334	1.5875	17
2.28. 0	2282.79	148.1	0.4639	-0.3336	0.91	-0.0410	1.5799	
2.28.30	2282.75	148.1	0.4722	-0.3259	0.87	-0.0605	1.5723	
2.29. 0	2282.54	148.1	0.4806	-0.3183	0.66	-0.1805	1.5649	
2.29.30	2282.58	147.9	0.4889	-0.3108	0.70	-0.1549	1.5577	
2.30. 0	2282.42	147.9	0.4972	-0.3034	0.54	-0.2676	1.5505	
2.30.30	2282.64	147.9	0.5056	-0.2962	0.76	-0.1192	1.5435	
2.31. 0	2281.86	147.9	0.5139	-0.2891	0.02	-1.6990	1.5366	
2.31.30	2281.49	147.9	0.5222	-0.2821	0.39	-0.4089	1.5298	
2.32. 0	2281.32	147.9	0.5306	-0.2753	0.56	-0.2518	1.5232	
2.32.30	2281.47	147.9	0.5389	-0.2685	0.41	-0.3872	1.5166	
2.33. 0	2281.05	147.9	0.5472	-0.2618	0.83	-0.0809	1.5102	
2.33.30	2281.34	147.9	0.5556	-0.2553	0.54	-0.2676	1.5038	
2.34. 0	2281.46	147.9	0.5639	-0.2488	0.42	-0.3768	1.4975	

F L O P E T R O L

SECTION 3

PAGE 10

PRESSURE & TEMPERATURE CALCULATIONS

DATE 25.02.84

TIME HR.MM.SS	PRES. PSIA	TEMP. DEG.F	DEL.T HRS	LOG DEL.T	DEL.P PSI	LOG DEL.P	LOG <u>T+DEL.T</u> DEL.T	
2.34.30	2281.37	147.7	0.5722	-0.2424	0.51	-0.2924	1.4914	17
2.35.0	2281.58	147.7	0.5806	-0.2362	0.30	-0.5229	1.4853	
2.35.30	2281.56	147.7	0.5889	-0.2300	0.32	-0.4949	1.4793	
2.36.0	2281.18	147.7	0.5972	-0.2239	0.70	-0.1549	1.4734	
2.36.30	2280.80	147.7	0.6056	-0.2178	1.08	0.0334	1.4676	
2.37.0	2280.79	147.7	0.6139	-0.2119	1.09	0.0374	1.4619	
2.37.30	2280.69	147.7	0.6222	-0.2061	1.19	0.0755	1.4562	
2.38.0	2280.62	147.7	0.6306	-0.2003	1.26	0.1004	1.4506	
2.38.30	2280.25	147.7	0.6389	-0.1946	1.63	0.2122	1.4451	
2.39.0	2280.38	147.7	0.6472	-0.1889	1.50	0.1761	1.4397	
2.39.30	2280.33	147.6	0.6556	-0.1834	1.55	0.1903	1.4344	
2.40.0	2280.29	147.6	0.6639	-0.1779	1.59	0.2014	1.4291	
2.40.30	2280.45	147.6	0.6722	-0.1725	1.43	0.1553	1.4239	
2.41.0	2280.45	147.6	0.6806	-0.1671	1.43	0.1553	1.4187	
2.41.30	2280.58	147.6	0.6889	-0.1619	1.30	0.1139	1.4136	
2.42.0	2280.72	147.6	0.6972	-0.1566	1.16	0.0645	1.4086	
2.42.30	2280.71	147.6	0.7056	-0.1515	1.17	0.0682	1.4036	
2.43.0	2280.65	147.6	0.7139	-0.1464	1.23	0.0899	1.3988	
2.43.30	2280.66	147.6	0.7222	-0.1413	1.22	0.0864	1.3939	
2.44.0	2280.41	147.6	0.7306	-0.1363	1.47	0.1673	1.3891	
2.44.30	2280.25	147.6	0.7389	-0.1314	1.63	0.2122	1.3844	18
2.45.0	2280.18	147.6	0.7472	-0.1266	1.70	0.2304	1.3797	
2.45.30	2279.93	147.6	0.7556	-0.1217	1.95	0.2900	1.3751	
2.46.0	2279.82	147.6	0.7639	-0.1170	2.06	0.3139	1.3706	
2.46.30	2279.85	147.6	0.7722	-0.1123	2.03	0.3075	1.3661	
2.47.0	2279.99	147.6	0.7806	-0.1076	1.89	0.2765	1.3616	
2.47.30	2279.77	147.6	0.7889	-0.1030	2.11	0.3243	1.3572	
2.48.0	2279.83	147.6	0.7972	-0.0984	2.05	0.3118	1.3528	
2.48.30	2280.10	147.6	0.8056	-0.0939	1.78	0.2504	1.3485	
2.49.0	2280.00	147.6	0.8139	-0.0894	1.88	0.2742	1.3442	
2.49.30	2280.07	147.6	0.8222	-0.0850	1.81	0.2577	1.3400	
2.50.0	2280.12	147.6	0.8306	-0.0806	1.76	0.2455	1.3358	
2.50.30	2280.23	147.6	0.8389	-0.0763	1.65	0.2175	1.3317	
2.51.0	2280.43	147.6	0.8472	-0.0720	1.45	0.1614	1.3276	
2.51.30	2280.51	147.6	0.8556	-0.0678	1.37	0.1367	1.3236	
2.52.0	2280.38	147.6	0.8639	-0.0635	1.50	0.1761	1.3196	
2.52.30	2280.53	147.6	0.8722	-0.0594	1.35	0.1303	1.3156	
2.53.0	2280.31	147.6	0.8806	-0.0552	1.57	0.1959	1.3117	
2.53.30	2280.16	147.6	0.8889	-0.0512	1.72	0.2355	1.3078	
2.54.0	2279.27	147.6	0.8972	-0.0471	2.61	0.4166	1.3039	
2.54.30	2279.54	147.4	0.9056	-0.0431	2.34	0.3692	1.3001	
2.55.0	2279.63	147.4	0.9139	-0.0391	2.25	0.3522	1.2963	
2.55.30	2279.73	147.4	0.9222	-0.0352	2.15	0.3324	1.2926	
2.56.0	2279.88	147.4	0.9306	-0.0313	2.00	0.3010	1.2889	
2.56.30	2279.65	147.4	0.9389	-0.0274	2.23	0.3483	1.2852	
2.57.0	2279.59	147.4	0.9472	-0.0235	2.29	0.3598	1.2816	
2.57.30	2279.59	147.4	0.9556	-0.0197	2.29	0.3598	1.2780	
2.58.0	2279.67	147.4	0.9639	-0.0160	2.21	0.3444	1.2744	
2.58.30	2279.40	147.4	0.9722	-0.0122	2.48	0.3945	1.2708	
2.59.0	2279.38	147.4	0.9806	-0.0085	2.50	0.3979	1.2673	
2.59.30	2279.65	147.4	0.9889	-0.0049	2.23	0.3483	1.2639	
3.0.0	2279.27	147.4	0.9972	-0.0012	2.61	0.4166	1.2604	
3.0.30	2279.30	147.4	1.0056	0.0024	2.58	0.4116	1.2570	

F L O P E T R O L

SECTION 3

PAGE 11

PRESSURE & TEMPERATURE CALCULATIONS

DATE 25.02.84

TIME HR.MM.SS	PRES. PSIA	TEMP. DEG.F	DEL.T HRS	LOG DEL.T	DEL.P PSI	LOG DEL.P	LOG T+DEL.T DELT	
3. 1. 0	2279.38	147.4	1.0139	0.0060	2.50	0.3979	1.2536	18
3. 1.30	2279.36	147.4	1.0222	0.0095	2.52	0.4014	1.2503	
3. 2. 0	2279.37	147.4	1.0306	0.0131	2.51	0.3997	1.2469	
3. 2.30	2279.43	147.4	1.0389	0.0166	2.45	0.3892	1.2436	
3. 3. 0	2279.22	147.4	1.0472	0.0200	2.66	0.4249	1.2404	
3. 3.30	2279.46	147.4	1.0556	0.0235	2.42	0.3838	1.2371	
3. 4. 0	2279.51	147.4	1.0639	0.0269	2.37	0.3747	1.2339	
3. 4.30	2279.43	147.4	1.0722	0.0303	2.45	0.3892	1.2307	
3. 5. 0	2279.54	147.4	1.0806	0.0336	2.34	0.3692	1.2275	
3. 5.30	2279.63	147.4	1.0889	0.0370	2.25	0.3522	1.2244	
3. 6. 0	2279.52	147.4	1.0972	0.0403	2.36	0.3729	1.2213	
3. 6.30	2279.33	147.4	1.1056	0.0436	2.55	0.4065	1.2182	
3. 7. 0	2279.39	147.4	1.1139	0.0468	2.49	0.3962	1.2151	19
3. 7.30	2279.46	147.4	1.1222	0.0501	2.42	0.3838	1.2121	
3. 8. 0	2279.41	147.4	1.1306	0.0533	2.47	0.3927	1.2091	
3. 8.30	2279.42	147.4	1.1389	0.0565	2.46	0.3909	1.2061	
3. 9. 0	2279.41	147.4	1.1472	0.0596	2.47	0.3927	1.2031	
3. 9.30	2279.46	147.2	1.1556	0.0628	2.42	0.3838	1.2002	
3.10. 0	2279.37	147.2	1.1639	0.0659	2.51	0.3997	1.1973	
3.10.30	2279.24	147.2	1.1722	0.0690	2.64	0.4216	1.1944	
3.11. 0	2279.49	147.2	1.1806	0.0721	2.39	0.3784	1.1915	
3.11.30	2279.48	147.2	1.1889	0.0751	2.40	0.3802	1.1886	
3.12. 0	2279.24	147.2	1.1972	0.0782	2.64	0.4216	1.1858	
3.12.30	2279.24	147.2	1.2056	0.0812	2.64	0.4216	1.1830	
3.13. 0	2279.16	147.2	1.2139	0.0842	2.72	0.4346	1.1802	
3.13.30	2279.19	147.2	1.2222	0.0872	2.69	0.4298	1.1774	
3.14. 0	2279.26	147.2	1.2306	0.0901	2.62	0.4183	1.1747	
3.14.30	2279.20	147.2	1.2389	0.0930	2.68	0.4281	1.1719	
3.15. 0	2279.30	147.2	1.2472	0.0959	2.58	0.4116	1.1692	
3.15.30	2279.34	147.2	1.2556	0.0988	2.54	0.4048	1.1665	
3.16. 0	2279.48	147.2	1.2639	0.1017	2.40	0.3802	1.1638	
3.16.30	2279.28	147.2	1.2722	0.1046	2.60	0.4150	1.1612	
3.17. 0	2279.32	147.2	1.2806	0.1074	2.56	0.4082	1.1585	
3.17.30	2279.20	147.2	1.2889	0.1102	2.68	0.4281	1.1559	
3.18. 0	2279.01	147.2	1.2972	0.1130	2.87	0.4579	1.1533	
3.18.30	2278.83	147.2	1.3056	0.1158	3.05	0.4843	1.1507	
3.19. 0	2278.84	147.2	1.3139	0.1186	3.04	0.4829	1.1482	
3.19.30	2278.86	147.2	1.3222	0.1213	3.02	0.4800	1.1456	
3.20. 0	2278.90	147.2	1.3306	0.1240	2.98	0.4742	1.1431	
3.20.30	2279.23	147.2	1.3389	0.1267	2.65	0.4232	1.1406	
3.21. 0	2279.31	147.2	1.3472	0.1294	2.57	0.4099	1.1381	
3.21.30	2279.10	147.2	1.3556	0.1321	2.78	0.4440	1.1356	
3.22. 0	2279.09	147.2	1.3639	0.1348	2.79	0.4456	1.1331	
3.22.30	2279.15	147.2	1.3722	0.1374	2.73	0.4362	1.1307	
3.23. 0	2279.07	147.2	1.3806	0.1401	2.81	0.4487	1.1282	
3.23.30	2278.85	147.2	1.3889	0.1427	3.03	0.4814	1.1258	
3.24. 0	2279.27	147.2	1.3972	0.1453	2.61	0.4166	1.1234	
3.24.30	2279.24	147.2	1.4056	0.1479	2.64	0.4216	1.1210	
3.25. 0	2279.13	147.2	1.4139	0.1504	2.75	0.4393	1.1186	
3.25.30	2279.05	147.2	1.4222	0.1530	2.83	0.4518	1.1163	
3.26. 0	2279.03	147.2	1.4306	0.1555	2.85	0.4548	1.1139	
3.26.30	2279.08	147.2	1.4389	0.1580	2.80	0.4472	1.1116	
3.27. 0	2279.12	147.2	1.4472	0.1605	2.76	0.4409	1.1093	

F L O P E T R O L

SECTION 3

PAGE 12

PRESSURE & TEMPERATURE CALCULATIONS

DATE 25.02.84

TIME HR.MM.SS	PRES. PSIA	TEMP. DEG.F	DEL.T HRS	LOG DEL.T	DEL.P PSI	LOG DEL.P	LOG T+DEL.T DELT	
3.27.30	2279.16	147.2	1.4556	0.1630	2.72	0.4346	1.1070	19
3.28.0	2279.27	147.2	1.4639	0.1655	2.61	0.4166	1.1047	
3.28.30	2279.29	147.2	1.4722	0.1680	2.59	0.4133	1.1024	
3.29.0	2279.28	147.2	1.4806	0.1704	2.60	0.4150	1.1002	
3.29.30	2279.19	147.0	1.4889	0.1729	2.69	0.4298	1.0979	20
3.30.0	2279.14	147.0	1.4972	0.1753	2.74	0.4378	1.0957	
3.30.30	2279.24	147.0	1.5056	0.1777	2.64	0.4216	1.0935	
3.31.0	2279.07	147.0	1.5139	0.1801	2.81	0.4487	1.0913	
3.31.30	2279.27	147.0	1.5222	0.1825	2.61	0.4166	1.0891	
3.32.0	2279.04	147.0	1.5306	0.1848	2.84	0.4533	1.0869	
3.32.30	2278.80	147.0	1.5389	0.1872	3.08	0.4886	1.0848	
3.33.0	2278.65	147.0	1.5472	0.1896	3.23	0.5092	1.0826	
3.33.30	2278.77	147.0	1.5556	0.1919	3.11	0.4928	1.0805	
3.34.0	2279.12	147.0	1.5639	0.1942	2.76	0.4409	1.0783	
3.34.30	2279.30	147.0	1.5722	0.1965	2.58	0.4116	1.0762	
3.35.0	2279.38	147.0	1.5806	0.1988	2.50	0.3979	1.0741	
3.35.30	2279.12	147.0	1.5889	0.2011	2.76	0.4409	1.0720	
3.41.0	2122.65	144.7						
3.41.30	2171.62	144.7						
3.42.0	2176.34	144.7						
3.42.30	2177.05	144.7						
3.43.0	2176.93	144.7						
3.43.30	2176.67	144.7						
3.44.0	2176.21	144.7						
3.44.30	2175.57	144.7						
3.45.0	2174.81	144.7						
3.45.30	2174.16	144.7						
3.46.0	2175.11	141.8						
3.46.30	2174.46	141.8						
3.47.0	2174.04	141.8						
3.47.30	2173.52	141.8						
3.48.0	2173.03	141.8						
3.48.30	2172.51	141.8						
3.49.0	2172.41	141.1						
3.49.30	2171.84	141.1						
3.50.0	2171.47	141.1						
3.50.30	2170.85	141.1						
3.51.0	2170.67	140.7						
3.51.30	2170.22	140.7						
3.52.0	2169.86	140.7						
3.52.30	2169.74	140.7						
3.53.0	2169.64	140.7						
3.53.30	2169.64	140.7						
3.54.0	2169.58	140.7						
3.54.30	2169.42	140.5						
3.55.0	2169.17	140.5						
3.55.30	2169.09	140.5						
3.56.0	2169.38	140.5						
4.21.0	914.94	69.1						
4.21.30	913.19	69.1						
4.22.0	912.22	66.9						
4.22.30	909.42	66.9						
4.23.0	906.67	66.9						

ENDE OF BUILD UP
GRADIENT STOP AT 1677 m AHBDF

P.O.O.H.
GRADIENT STOP AT 354 m AHBDF

F L O P E T R O L

SECTION 3

PAGE 13

PRESSURE & TEMPERATURE CALCULATIONS

DATE 25.02.84

TIME HR.MM.SS	PRES. PSIA	TEMP. DEG.F	DEL.T HRS	LOG DEL.T	DEL.P PSI	LOG DEL.P	LOG $\frac{T+DEL.T}{DEL.T}$	
4.23.30	904.95	63.7						21
4.24. 0	903.03	63.7						
4.24.30	900.38	63.7						
4.25. 0	897.76	63.7						
4.25.30	895.33	63.7						
4.26. 0	893.01	63.7						
4.26.30	890.69	63.7						
4.27. 0	888.57	63.7						
4.27.30	886.62	63.7						
4.28. 0	884.66	63.7						
4.28.30	882.89	63.7						
4.29. 0	884.71	58.8						
4.29.30	883.15	58.8						
4.30. 0	881.66	58.8						
4.30.30	880.73	57.9						
4.31. 0	879.42	57.9						
4.31.30	878.10	57.9						
4.32. 0	877.08	57.9						
4.32.30	875.92	57.9						
4.33. 0	874.97	57.9						
4.33.30	874.07	57.9						
4.34. 0	873.12	57.9						
4.34.30	872.33	57.9						
4.35. 0	871.51	57.9						
4.55. 0	626.39							
4.55.30	625.93							
4.56. 0	624.55	44.4						
4.56.30	624.20	44.4						
4.57. 0	623.97	44.4						
4.57.30	623.33	45.7						
4.58. 0	622.69	45.7						
4.58.30	622.71	45.7						
4.59. 0	622.72	45.7						
4.59.30	622.47	46.6						
5. 0. 0	622.22	46.6						
5. 0.30	622.34	46.6						
5. 1. 0	622.47	46.6						
5. 1.30	622.34	47.3						
5. 2. 0	622.21	47.3						

P.O.O.H.
GRADIENT STOP AT RTKB

22

END OF SURVEY:

TECHNICAL DATA

GAUGE

Type	:	TPT
Transducer module	:	82404
Processor module	:	
Recorder module	:	

OPERATION SET UP

Delay time	:	
Scanning rate	:	

CALIBRATION DATA

Before job:

Ambient pressure	:	8.6	PSIA
Ambient temperature	:	19.8	°C

After job:

Ambient pressure	:	7.3	PSIA
Ambient temperature	:	13.8	°C

Date last calibration	:	01 DEC 83
-----------------------	---	-----------

FILE 4

1.1746TEMP145.9	1.1748	2261.27	1.1800	2266.94	1.1831	2271.23	
1.1900	2272.00	1.1931	2273.41	1.2000	2274.32	1.2030	2274.97
1.2100	2275.73	1.2131	2276.33	1.2200	2276.86	1.2231	2277.25
1.2247TEMP148.3	1.2300	2276.46	1.2330	2276.82	1.2618TEMP148.8		
1.2620	2277.91	1.2651	2278.73	1.2700	2278.67	1.2731	2278.87
1.2800	2278.62	1.2831	2279.03	1.3001TEMP149.2		1.3003	2279.68
1.3033	2280.05	1.3100	2280.18	1.3131	2280.34	1.3200	2280.25
1.3230	2279.44	1.3241TEMP149.2		1.3300	2279.75	1.3331	2279.85
1.3505TEMP149.4		1.3507	2280.81	1.3538	2280.90	1.3600	2280.97
1.3631	2280.99	1.3700	2280.81	1.3731	2280.93	1.3800	2280.37
1.3830	2280.75	1.3900	2280.82	1.3931	2280.71	1.4000	2281.43
1.4007TEMP149.4		1.4031	2281.36	1.4100	2281.25	1.4130	2280.84
1.4200	2280.77	1.4231	2281.55				

FILE 5

1.4300	2281.58	1.4331	2281.56	1.4400	2281.56	1.4430	2281.09
1.4500	2281.29	1.4508TEMP149.4		1.4531	2281.09	1.4600	2280.98
1.4631	2280.98	1.4700	2280.74	1.4730	2281.54	1.4800	2281.67
1.4831	2281.71	1.4900	2281.45	1.4931	2281.14	1.5000	2280.75
1.5010TEMP149.4		1.5030	2280.81	1.5100	2281.56	1.5131	2281.80
1.5200	2281.83	1.5231	2281.76	1.5300	2281.48	1.5330	2281.15
1.5400	2281.65	1.5431	2281.38	1.5500	2281.58	1.5511TEMP149.4	
1.5531	2281.69	1.5609	2281.55	1.5619	2281.47	1.5642	2281.07
1.5654	2280.46	1.5700	2278.53	1.5710	2280.09	1.5721	2280.93
1.5730	2281.44	1.5740	2281.69	1.5750	2281.68	1.5800	2281.71
1.5810	2281.75	1.5821	2281.85	1.5830	2281.90	1.5837TEMP149.4	
1.5839	2281.85	1.5840	2281.87	1.5842	2281.73	1.5843	2281.74
1.5844	2281.72	1.5845	2281.71				

FILE 6

1.5849	2281.68	1.5850TEMP149.4		1.5852	2281.78	1.5853	2281.74
1.5854	2281.75	1.5855	2281.68	1.5857	2281.76	1.5858	2281.72
1.5900	2281.79	1.5901	2281.82	1.5903TEMP149.4		1.5904	2281.81
1.5906	2281.84	1.5907	2281.89	1.5909	2281.88	1.5910	2281.90
1.5911	2281.85	1.5912	2281.93	1.5913	2281.92	1.5915	2281.91
1.5916TEMP149.4		1.5918	2281.93	1.5919	2281.89	1.5920	2281.92
1.5921	2281.85	1.5922	2281.84	1.5924	2281.85	1.5925	2281.81
1.5927	2281.79	1.5928	2281.82	1.5929	2281.76	1.5930	2281.72
1.5932TEMP149.4		1.5934	2281.79	1.5936	2281.79	1.5937	2281.78
1.5938	2281.75	1.5939	2281.69	1.5940	2281.72	1.5942	2281.78
1.5943	2281.82	1.5944TEMP149.4		1.5946	2281.83	1.5947	2281.81
1.5948	2281.83	1.5949	2281.87	1.5951	2281.83	1.5952	2281.87
1.5954	2281.88	1.5955	2281.91				

FILE 7

1.5959TEMP149.4		2.0000	2281.90	2.0002	2281.87	2.0004	2281.95
2.0005	2281.90	2.0006	2281.93	2.0008	2281.88	2.0009	2281.89
2.0010	2281.88	2.0011TEMP149.4		2.0013	2281.93	2.0014	2281.97
2.0015	2281.99	2.0017	2282.18	2.0018	2282.32	2.0019	2282.25
2.0020	2282.33	2.0022	2282.44	2.0023	2282.43	2.0024TEMP149.4	
2.0026	2282.55	2.0027	2282.61	2.0028	2282.61	2.0029	2282.63
2.0030	2282.72	2.0032	2282.64	2.0033	2282.72	2.0035	2282.76
2.0036	2282.78	2.0037TEMP149.4		2.0038	2282.73	2.0040	2282.76
2.0041	2282.75	2.0042	2282.85	2.0044	2282.79	2.0045	2282.80
2.0046	2282.84	2.0047	2282.82	2.0049	2282.81	2.0050TEMP149.4	
2.0052	2282.88	2.0053	2282.80	2.0054	2282.89	2.0055	2282.98
2.0056	2282.85	2.0058	2282.95	2.0059	2282.87	2.0100	2282.94
2.0102	2282.90	2.0103TEMP149.4					

FILE 8

2.0108	2283.01	2.0109	2283.05	2.0111	2283.01	2.0112	2283.10
2.0113	2283.03	2.0114	2283.07	2.0115	TEMP149.4	2.0116	2283.08
2.0117	2283.08	2.0118	2283.08	2.0120	2283.08	2.0121	2283.13
2.0122	2283.10	2.0123	2283.16	2.0125	2283.18	2.0126	2283.13
2.0127	TEMP149.4	2.0129	2283.17	2.0130	2283.16	2.0131	2283.12
2.0132	2283.21	2.0134	2283.10	2.0135	2283.17	2.0136	2283.21
2.0138	2283.30	2.0139	2283.42	2.0140	TEMP149.4	2.0142	2283.26
2.0143	2283.19	2.0144	2283.29	2.0145	2283.18	2.0147	2283.15
2.0148	2283.20	2.0149	2283.30	2.0150	2283.45	2.0152	2283.52
2.0153	TEMP149.4	2.0155	2283.32	2.0156	2283.41	2.0157	2283.35
2.0158	2283.36	2.0159	2283.22	2.0200	2283.23	2.0202	2283.32
2.0203	2283.40	2.0205	2283.62	2.0206	TEMP149.4	2.0208	2283.64
2.0210	2283.53	2.0211	2283.55				

FILE 9

2.0214	2283.41	2.0215	2283.47	2.0216	2283.46	2.0217	2283.41
2.0218	TEMP149.4	2.0220	2283.65	2.0221	2283.58	2.0223	2283.70
2.0224	2283.68	2.0225	2283.75	2.0226	2283.70	2.0228	2283.61
2.0229	2283.65	2.0230	2283.68	2.0232	TEMP149.4	2.0234	2283.76
2.0235	2283.80	2.0237	2283.79	2.0238	2283.78	2.0239	2283.75
2.0241	2283.75	2.0242	2283.83	2.0243	2283.88	2.0244	TEMP149.4
2.0246	2283.91	2.0247	2283.91	2.0248	2283.76	2.0250	2283.82
2.0251	2283.89	2.0252	2283.84	2.0253	2283.98	2.0255	2283.90
2.0256	2283.86	2.0257	2283.78	2.0259	2283.71	2.0300	2283.75
2.0302	TEMP149.4	2.0304	2283.79	2.0305	2283.83	2.0306	2283.90
2.0308	2283.95	2.0309	2283.82	2.0310	2283.81	2.0311	2283.78
2.0313	2283.90	2.0314	2283.96	2.0315	TEMP149.4	2.0317	2283.75
2.0318	2283.81	2.0319	2283.85				

FILE 10

2.0322	2283.90	2.0323	2283.95	2.0324	2283.88	2.0326	2284.06
2.0327	2284.05	2.0328	TEMP149.4	2.0330	2283.92	2.0332	2283.94
2.0333	2283.97	2.0335	2283.96	2.0336	2284.07	2.0337	2283.96
2.0338	2283.94	2.0340	2283.93	2.0341	TEMP149.2	2.0343	2283.98
2.0344	2284.03	2.0345	2283.99	2.0346	2283.94	2.0347	2283.94
2.0349	2284.03	2.0350	2283.91	2.0351	2283.87	2.0353	2284.09
2.0354	TEMP149.2	2.0356	2284.10	2.0358	2284.27	2.0359	2284.09
2.0400	2284.13	2.0402	2284.13	2.0403	2284.09	2.0404	2284.15
2.0405	2283.99	2.0407	TEMP149.2	2.0409	2284.14	2.0411	2284.29
2.0412	2284.15	2.0413	2284.16	2.0414	2284.18	2.0416	2284.03
2.0417	2284.15	2.0418	2284.22	2.0419	TEMP149.2	2.0421	2284.19
2.0422	2284.13	2.0423	2284.21	2.0425	2284.27	2.0426	2284.25
2.0427	2284.35	2.0429	2284.12				

FILE 11

2.0432	2284.42	2.0435	TEMP149.2	2.0436	2284.26	2.0438	2284.03
2.0439	2284.08	2.0440	2284.10	2.0441	2284.21	2.0443	2284.41
2.0444	2284.37	2.0445	2284.36	2.0447	2284.35	2.0448	TEMP149.2
2.0450	2284.33	2.0452	2284.37	2.0453	2284.36	2.0454	2284.42
2.0456	2284.37	2.0457	2284.47	2.0458	2284.39	2.0459	2284.48
2.0500	2284.45	2.0503	TEMP149.2	2.0504	2284.64	2.0505	2284.64
2.0506	2284.66	2.0507	2284.58	2.0508	2284.53	2.0510	2284.59
2.0511	2284.65	2.0512	2284.64	2.0514	2284.72	2.0515	2284.81
2.0516	TEMP149.2	2.0518	2284.83	2.0519	2284.89	2.0520	2284.87
2.0521	2284.92	2.0523	2284.96	2.0524	2284.84	2.0525	2284.92
2.0526	2284.93	2.0528	2285.10	2.0529	2285.13	2.0530	2285.17
2.0532	TEMP149.2	2.0534	2285.03	2.0535	2285.03	2.0537	2285.21
2.0538	2285.19	2.0539	2285.25				

FILE 12

2.0542	2285.30	2.0543	2285.19	2.0544	TEMP149.0	2.0546	2285.39
2.0547	2285.45	2.0548	2285.46	2.0550	2285.36	2.0551	2285.39
2.0552	2285.40	2.0553	2285.41	2.0555	2285.41	2.0556	2285.32
2.0557	2285.39	2.0559	2285.31	2.0600	2285.36	2.0602	TEMP149.0
2.0604	2285.41	2.0605	2285.44	2.0606	2285.51	2.0607	2285.58
2.0609	2285.59	2.0610	2285.61	2.0612	2285.65	2.0613	2285.61
2.0614	TEMP149.0	2.0616	2285.63	2.0618	2285.66	2.0619	2285.59
2.0621	2285.67	2.0622	2285.75	2.0623	2285.63	2.0624	2285.59
2.0625	2285.63	2.0626	TEMP149.0	2.0628	2285.67	2.0630	2285.41
2.0631	2285.23	2.0632	2285.29	2.0633	2285.37	2.0634	2285.45
2.0636	2285.74	2.0637	2285.83	2.0638	TEMP149.0	2.0640	2285.74
2.0641	2285.66	2.0642	2285.57	2.0643	2285.64	2.0645	2285.52
2.0646	2285.52	2.0648	2285.44				

FILE 13

2.0651	2285.50	2.0653	TEMP149.0	2.0654	2285.60	2.0655	2285.58
2.0657	2285.62	2.0658	2285.64	2.0659	2285.65	2.0700	2285.61
2.0701	2285.57	2.0703	2285.53	2.0704	2285.56	2.0705	TEMP149.0
2.0707	2285.55	2.0708	2285.49	2.0709	2285.50	2.0710	2285.48
2.0712	2285.47	2.0713	2285.43	2.0715	2285.39	2.0716	2285.46
2.0717	TEMP149.0	2.0719	2285.35	2.0721	2285.35	2.0722	2285.35
2.0724	2285.33	2.0725	2285.23	2.0726	2285.27	2.0728	2285.30
2.0730	2285.29	2.0732	TEMP149.0	2.0734	2285.32	2.0735	2285.33
2.0736	2285.34	2.0737	2285.30	2.0739	2285.30	2.0740	2285.33
2.0742	2285.28	2.0743	2285.31	2.0744	TEMP148.8	2.0746	2285.25
2.0748	2285.23	2.0749	2285.22	2.0751	2285.23	2.0752	2285.23
2.0753	2285.28	2.0754	2285.24	2.0755	2285.27	2.0756	TEMP148.8
2.0758	2285.23	2.0800	2285.29				

FILE 14

2.0804	2285.35	2.0806	2285.41	2.0807	2285.44	2.0808	TEMP148.8
2.0810	2285.54	2.0811	2285.53	2.0812	2285.61	2.0813	2285.63
2.0815	2285.64	2.0816	2285.68	2.0818	2285.73	2.0819	2285.77
2.0820	TEMP148.8	2.0822	2285.81	2.0824	2285.77	2.0825	2285.82
2.0827	2285.76	2.0828	2285.86	2.0829	2285.81	2.0830	2285.87
2.0832	2285.89	2.0833	TEMP148.8	2.0834	2285.91	2.0836	2285.93
2.0837	2285.87	2.0838	2285.87	2.0839	2285.93	2.0840	2285.85
2.0842	2285.90	2.0843	2285.84	2.0845	2285.89	2.0847	TEMP148.8
2.0848	2285.92	2.0849	2285.95	2.0851	2286.02	2.0853	TEMP148.8
2.0900	2286.05	2.0910	2286.01	2.0921	2286.09	2.0930	2285.99
2.0940	2286.01	2.0950	2285.86	2.1000	2285.92	2.1010	2285.98
2.1021	2285.90	2.1030	2286.06	2.1040	2285.45	2.1051	2285.54
2.1100	2285.30	2.1110	2285.14				

FILE 15

2.1120	2285.09	2.1130	2285.04	2.1140	2285.08	2.1151	2285.04
2.1200	2285.17	2.1210	2284.93	2.1221	2285.11	2.1230	2285.13
2.1240	2284.80	2.1250	2284.76	2.1300	2284.75	2.1310	2284.78
2.1321	2284.80	2.1330	2284.92	2.1340	2284.93	2.1351	2284.97
2.1400	2284.93	2.1402	TEMP148.5	2.1410	2285.21	2.1420	2285.29
2.1430	2285.19	2.1440	2285.10	2.1451	2284.97	2.1500	2285.05
2.1510	2285.08	2.1521	2285.14	2.1530	2285.13	2.1540	2284.99
2.1550	2284.97	2.1600	2285.03	2.1610	2284.97	2.1621	2285.01
2.1630	2284.95	2.1640	2284.96	2.1651	2285.01	2.1700	2285.03
2.1710	2284.65	2.1720	2284.48	2.1730	2284.53	2.1740	2284.64
2.1751	2284.53	2.1800	2284.61	2.1810	2284.70	2.1821	2284.72
2.1830	2284.79	2.1840	2284.92	2.1850	2284.82	2.1900	2284.78
2.1903	TEMP148.3	2.1910	2284.95				

FILE 16

2.1921	2285.00	2.1930	2284.95	2.1940	2284.85	2.1951	2284.98
2.2000	2284.61	2.2010	2284.75	2.2020	2284.68	2.2030	2284.33
2.2040	2284.72	2.2051	2284.47	2.2100	2284.58	2.2110	2284.39
2.2121	2284.66	2.2130	2284.61	2.2140	2284.46	2.2150	2284.52
2.2200	2284.40	2.2210	2284.31	2.2221	2284.25	2.2230	2284.01
2.2240	2284.12	2.2251	2284.16	2.2300	2284.25	2.2310	2284.23
2.2320	2284.23	2.2330	2283.71	2.2340	2283.51	2.2351	2283.49
2.2400	2283.64	2.2403	TEMP148.1	2.2410	2283.55	2.2421	2283.50
2.2430	2283.53	2.2440	2283.57	2.2450	2283.67	2.2500	2283.66
2.2510	2283.93	2.2521	2283.47	2.2530	2283.39	2.2540	2283.35
2.2551	2283.03	2.2600	2283.36	2.2610	2283.28	2.2620	2283.27
2.2630	2282.91	2.2640	2282.92	2.2651	2283.29	2.2700	2283.02
2.2710	2283.15	2.2721	2283.10				

FILE 17

2.2730	2282.96	2.2740	2282.92	2.2750	2282.70	2.2800	2282.79
2.2810	2282.71	2.2821	2282.80	2.2830	2282.75	2.2840	2282.66
2.2851	2282.56	2.2900	2282.54	2.2903	TEMP147.9	2.2910	2282.68
2.2920	2282.70	2.2930	2282.58	2.2940	2282.45	2.2951	2282.35
2.3000	2282.42	2.3010	2282.55	2.3021	2282.56	2.3030	2282.64
2.3040	2281.85	2.3100	2281.86	2.3130	2281.49	2.3200	2281.32
2.3230	2281.47	2.3300	2281.05	2.3330	2281.34	2.3400	2281.46
2.3403	TEMP147.7	2.3430	2281.37	2.3500	2281.58	2.3530	2281.56
2.3600	2281.18	2.3630	2280.80	2.3700	2280.79	2.3730	2280.69
2.3800	2280.62	2.3830	2280.25	2.3900	2280.38	2.3903	TEMP147.6
2.3930	2280.33	2.4000	2280.29	2.4030	2280.45	2.4100	2280.45
2.4130	2280.58	2.4200	2280.72	2.4230	2280.71	2.4300	2280.65
2.4330	2280.66	2.4400	2280.41				

FILE 18

2.4409	TEMP147.6	2.4430	2280.25	2.4500	2280.18	2.4530	2279.93
2.4600	2279.82	2.4630	2279.85	2.4700	2279.99	2.4730	2279.77
2.4800	2279.83	2.4830	2280.10	2.4900	2280.00	2.4909	TEMP147.6
2.4930	2280.07	2.5000	2280.12	2.5030	2280.23	2.5100	2280.43
2.5130	2280.51	2.5200	2280.38	2.5230	2280.53	2.5300	2280.31
2.5330	2280.16	2.5400	2279.27	2.5409	TEMP147.4	2.5430	2279.54
2.5500	2279.63	2.5530	2279.73	2.5600	2279.88	2.5630	2279.65
2.5700	2279.59	2.5730	2279.59	2.5800	2279.67	2.5830	2279.40
2.5900	2279.38	2.5909	TEMP147.4	2.5930	2279.65	3.0000	2279.27
3.0030	2279.30	3.0100	2279.38	3.0130	2279.36	3.0200	2279.37
3.0230	2279.43	3.0300	2279.22	3.0330	2279.46	3.0400	2279.51
3.0409	TEMP147.4	3.0430	2279.43	3.0500	2279.54	3.0530	2279.63
3.0600	2279.52	3.0630	2279.33				

FILE 19

3.0700	2279.39	3.0730	2279.46	3.0800	2279.41	3.0830	2279.42
3.0900	2279.41	3.0909	TEMP147.2	3.0930	2279.46	3.1000	2279.37
3.1030	2279.24	3.1100	2279.49	3.1130	2279.48	3.1200	2279.24
3.1230	2279.24	3.1300	2279.16	3.1330	2279.19	3.1400	2279.26
3.1409	TEMP147.2	3.1430	2279.20	3.1500	2279.30	3.1530	2279.34
3.1600	2279.48	3.1630	2279.28	3.1700	2279.32	3.1730	2279.20
3.1800	2279.01	3.1830	2278.83	3.1900	2278.84	3.1909	TEMP147.2
3.1930	2278.86	3.2000	2278.90	3.2030	2279.23	3.2100	2279.31
3.2130	2279.10	3.2200	2279.09	3.2230	2279.15	3.2300	2279.07
3.2330	2278.85	3.2400	2279.27	3.2409	TEMP147.2	3.2430	2279.24
3.2500	2279.13	3.2530	2279.05	3.2600	2279.03	3.2630	2279.08
3.2700	2279.12	3.2730	2279.16	3.2800	2279.27	3.2830	2279.29
3.2900	2279.28	3.2909	TEMP147.0				

FILE 20

3.2930	2279.19	3.3000	2279.14	3.3030	2279.24	3.3100	2279.07
3.3130	2279.27	3.3200	2279.04	3.3230	2278.80	3.3300	2278.65
3.3330	2278.77	3.3400	2279.12	3.3409	TEMP147.0	3.3430	2279.30
3.3500	2279.38	3.3530	2279.12	3.3600	2279.14	3.4054	TEMP144.7
3.4055	2101.29	3.4100	2122.65	3.4130	2171.62	3.4200	2176.34
3.4230	2177.05	3.4300	2176.93	3.4330	2176.67	3.4400	2176.21
3.4430	2175.57	3.4500	2174.81	3.4530	2174.16	3.4554	TEMP141.8
3.4600	2175.11	3.4630	2174.46	3.4700	2174.04	3.4730	2173.52
3.4800	2173.03	3.4830	2172.51	3.4838	TEMP141.1	3.4900	2172.41
3.4930	2171.84	3.5000	2171.47	3.5030	2170.85	3.5043	TEMP140.7
3.5100	2170.67	3.5130	2170.22	3.5148	TEMP140.7	3.5200	2169.86
3.5230	2169.74	3.5300	2169.64	3.5330	2169.64	3.5400	2169.58
3.5411	TEMP140.5	3.5430	2169.42				

FILE 21

3.5500	2169.17	3.5530	2169.09	3.5600	2169.38	3.5630	2169.86
4.2050	TEMP 69.1	4.2053	914.99	4.2100	914.94	4.2130	913.19
4.2155	TEMP 66.9	4.2200	912.22	4.2230	909.42	4.2300	906.67
4.2352	TEMP 63.7	4.2355	903.52	4.2400	903.03	4.2430	900.38
4.2500	897.76	4.2530	895.33	4.2600	893.01	4.2630	890.69
4.2700	888.57	4.2730	886.62	4.2800	884.66	4.2830	882.89
4.2853	TEMP 58.8	4.2900	884.71	4.2930	883.15	4.3000	881.66
4.3014	TEMP 57.9	4.3030	880.73	4.3100	879.42	4.3130	878.10
4.3200	877.08	4.3230	875.92	4.3300	874.97	4.3330	874.07
4.3400	873.12	4.3430	872.33	4.3500	871.51	4.3515	TEMP 56.1
95.4844	TEMP****	4.5201	TEMP 42.4	4.5224	TEMP 42.4	4.5228	617.53
4.5230	619.61	4.5300	628.38	4.5330	628.61	4.5353	TEMP 43.2
4.5400	627.61	95.4554	TEMP****				

FILE 22

4.5500	626.39	4.5530	625.93	4.5552	TEMP 44.4	4.5600	624.55
4.5642	624.06	4.5700	623.97	4.5751	TEMP 45.7	4.5800	622.69
4.5900	622.72	4.5951	TEMP 46.6	5.0000	622.22	5.0100	622.47
5.0150	TEMP 47.3	5.0200	622.21	4.2400	903.03	4.2430	900.38
4.2500	897.76	4.2530	895.33	4.2600	893.01	4.2630	890.69
4.2700	888.57	4.2730	886.62	4.2800	884.66	4.2830	882.89
4.2853	TEMP 58.8	4.2900	884.71	4.2930	883.15	4.3000	881.66
4.3014	TEMP 57.9	4.3030	880.73	4.3100	879.42	4.3130	878.10
4.3200	877.08	4.3230	875.92	4.3300	874.97	4.3330	874.07
4.3400	873.12	4.3430	872.33	4.3500	871.51	4.3515	TEMP 56.1
95.4844	TEMP****	4.5201	TEMP 42.4	4.5224	TEMP 42.4	4.5228	617.53
4.5230	619.61	4.5300	628.38	4.5330	628.61	4.5353	TEMP 43.2
4.5400	627.61	95.4554	TEMP****				

```
*****  
* LISTING OF ALL DATA *  
* ON TAPE *  
*****
```

```
TEMPERATURE IN      DEG F  
PRESSURE IN         PSI A  
TIME IN             HH.MM SS
```

```
CLIENT      : NORSKE SHELL  
FIELD       : TROLL  
WELL        : 31/2-13  
ZONE        : JURASSIC SANDSTONE  
PERFS.      : 1801 - 1807 M AHBDF  
GAUGE       : TPT 82404  
SURVEY DEPTH : 1777 M AHBDF  
DATE        : 25TH FEB. 84
```