

FLOPETROL JO

Denne rapport
tilhører



L&U DOK. SENTER

L. NR. 30284220008

KODE Well 31/2-13 nr. 7

Returneres etter bruk

HIGH ACCURACY PRESSURE TEMPERATURE MEASUREMENTS

Company : NORSKE SHELL Country : NORWAY

Field : TROLL Well : 31/2-13 PRE-ACID

Zone : JURASSIC Date : 02 - 05.03.84
SANDSTONE

FLOPETROL JOHNSTON

Schlumberger

FLOPETROL

DISTRICT : NSD
BASE : NWB
REPORT No. : ELS 84.13

HIGH ACCURACY PRESSURE TEMPERATURE MEASUREMENTS

Company : NORSKE SHELL Country : NORWAY

Field : TROLL Well : 31/2-13 PRE-ACID TEST

Zone : JURASSIC
SANDSTONE Date : 02 - 05.03.84

GAUGE: SDP NO. T.M. 83053 R.M. 83070

FLOPETROL

Client : NORSKE SHELL

Section

INDEX

Field : TROLLBase: NWBWell : 31/2-13Report No: ELS 84.13

INDEX

- 1 - MEASUREMENT PLOTS
- 2 - MEASUREMENT DATA
- 3 - SEQUENCE OF EVENTS
- 4 - WELL COMPLETION DATA
- 5 - LISTING OF ALL DATA RECORDED
- 6 -
- 7 -

Flopetrol operator:

G.O. EIKEMO

Company representative:

R. TESSEM - O. HAMMOND

GENERAL INFORMATION

1.1 service :SDP PRESSURE AND TEMPERATURE SURVEY
1.2 company :SHELL
1.3 well :31/2-13
1.4 field :TROLL
1.6 country :NORWAY

OPERATION DATA

2.1 date of test :2-MARCH-5-MARCH.1984
2.2 report nbr. :ELS 84/13
2.3 base :NWB
2.4 district :NSD
2.5 recorded by :G-O EIKEMO
2.6 witnessed by :R.TESSEM/D.HAMMOND

EQUIPMENT DATA

3.3 surface equipt. :PCS-B # 1150. HP # 1145
3.4 downhole equipt. :SDP # 83053

DEPTH INFORMATION

4.1 depth unit :METER
4.3 elevation :25 mRKB
4.7 total depth FLO. :1771 mAHBDF (F-NIPPEL)
4.11 gauge set at :1774.62 mAHBDF

WELL DATA

5.1 well type :APPRAISAL
5.2 fluid type :OIL
5.5 production interval :1801-1807 mAHBDF
5.8 tbg. size :5 1/2"
5.11 max. deviation :46 DEG

SEQUENCE OF EVENTS

DATE	TIME	OPERATION
2/3-84		PRE-ACID TEST
		HORNER TIME AND DEPTHS GIVEN BY LUUK KARSTEN, SHELL, NORWAY.
	17:51	POWER ON TOP GAUGE, SDP NO. 83053.
	17:58	POWER ON BOTTOM GAUGE, SDP NO. 83060.
	18:15	GAUGES ON STRING.
	18:30	LUBRICATOR CONNECTED.
	18:50	START PRESS. TEST TO 3000 PSI.
	19:13	OPEN LUBRICATOR VALVE, 1ST GRADIENT STOP IN LUBRICATOR.
	19:35	R.I.H. FOR 2ND GRADIENT STOP.
	20:01	AT 2ND GRADIENT STOP. 1591,7 M AHBDF = 1428.4 M TVBDF.
	20:16	R.I.H. FOR 3RD GRADIENT STOP.
	20:19	AT 3RD GRADIENT STOP. 1691.7 M AHBDF = 1498.4 M TVBDF.
	20:34	R.I.H. TO SET GAUGES.
	20:55	SET GAUGES IN 'F' NIPPLE. 1771 M AHBDF = 1550 M TVBDF.
	22:05	OPEN WELL ON 8/64" ADJ. CHOKE.
	22:10	CHANGE TO 16/64" ADJ. CHOKE.
	22:15	CHANGE TO 20/64" ADJ. CHOKE.
3/3-84		
	06:00	CHANGE TO 28/64" ADJ. CHOKE.

FLOPETROL

Section : **3**
Page : **2**
Report No.: **ELS 84.13**

SEQUENCE OF EVENTS (Continuation)

DATE	TIME	OPERATION
3/3-84		
	06:15	CHANGE TO 28/64" FIX. CHOKE.
	12:30	CHANGE TO 36/64" ADJ. CHOKE.
	12:40	CHANGE TO 36/64" FIX. CHOKE.
	13:15	CHANGE TO 32/64" ADJ. CHOKE.
	13:30	CHANGE TO 32/64" FIX. CHOKE.
	13:45	CHANGE TO 36/64" ADJ. CHOKE.
	13:55	CHANGE TO 36/64" FIX. CHOKE.
4/3-84		
	12:00	CHANGE TO 44/64" ADJ. CHOKE.
	12:15	CHANGE TO 44/64" FIX. CHOKE.
	16:30	CHANGE TO 48/64" ADJ. CHOKE.
	16:45	CHANGE TO 48/64" FIX. CHOKE.
	21:15	CHANGE TO 52/64" ADJ. CHOKE.
	21:30	CHANGE TO 52/64" FIX. CHOKE.
	23:00	CHANGE TO 52/64" ADJ. CHOKE AND BEAN SLOWLY DOWN TO 24/64" ADJ. CHOKE.
	23:15	CHANGE TO 24/64" FIX. CHOKE.
5/3-84		
	02:00	CHANGE TO 20/64" ADJ. CHOKE.
	02:30	CHANGE TO 20/64" FIX. CHOKE.
	11:00	WELL SHUT IN AT PCT-VALVE FOR BUILD UP.
	13:03	OPEN PCT-VALVE.
	16:45	R.I.H. WITH W.L. TO RETRIEVE GAUGES.
	16:58	AT DEPTH.
	17:02	P.O.O.H. FOR 1ST GRADIENT STOP.
	17:05	AT 1ST GRADIENT STOP, 1691.7 M AHBDF = 1498.4 M TVBDF.
	17:20	P.O.O.H. FOR 2ND GRADIENT STOP.

FLOPETROL

Section : **3**
Page : 3
Report No.: ELS 84.13

SEQUENCE OF EVENTS (Continuation)

DATE	TIME	OPERATION
5/3-84		
	17:24	AT 2ND GRADIENT STOP. 1591.7 M AHBDF =
		1428.4 M TVBDF.
	17:39	P.O.O.H. FOR 3RD GRADIENT STOP.
	18:16	AT 3RD GRADIENT STOP IN LUBRICATOR.
	18:24	GRADIENTS COMPLETED.
	18:27	START RIG DOWN W.L.
	18:46	POWER OFF. SDP NO. 83060.
	18:50	POWER OFF. SDP NO. 83053.
		SDP NO. 83060 FAILED AFTER 3 HR. RECORDING TIME.

[144] LOG-LOG PLOT T0=05-MAR-84 10:59:38

P0=2241.57

P-P0 (psia)			
.37669	1.	10.	100.
.....			
[11,93]			

05-MAR-84 11:00:08

		.
1. E-2		. . .
.1		
1.		. . .

05-MAR-84

13:03:08

SDP (psia)

2240.

2320.

.....
[2253.5]

05-MAR-84 11:00:08

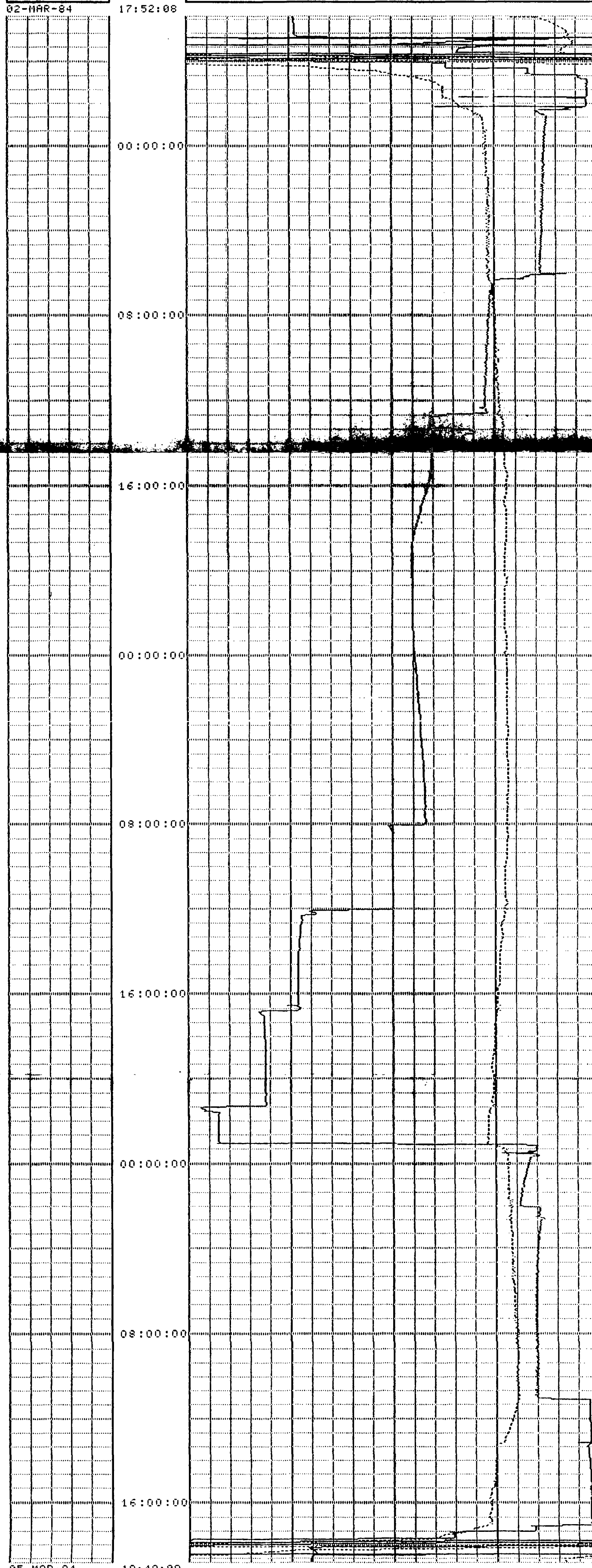
1000.		.	
100.		.	
10.		:	

05-MAR-84 13:03:08

NORSKE SHELL, WELL 31/2-13, SDP#83059, DEPTH: 1774.62 m

(133) VERSUS TIME LOGGING START TIME: 03-MAR-84 17:51:00 SCALE: 14400. sec/inch

	SDP (psia)
1900. [5.0942]	2300.
	SDT (degF)
120. [31.452]	160.



02-MAR-84

17:52:08

05-MAR-84

18:49:08

NOTE:

ALL DEPTHS GIVEN IN SEQUENCE OF EVENTS FOR GRADIENT
STOPS ARE W.L. DEPTHS

GRADIENT STOPS	W.L. DEPTHS (m TVDBF)	SDP M.P. DEPTHS (m TVDBF)
1st	IN LUBRICATOR	
2nd	1428.4	1432.2
3rd	1498.4	1502.2

02-MAR-84	SDT degF	SDP psia
17:56:08	34.39	3.45
18:28:08	36.84	4.90
18:44:08	37.33	5.73
18:46:08	37.00	6.87
18:46:38	37.00	7.39
18:47:38	36.84	27.80
18:48:08	37.00	37.26
18:48:38	36.84	99.31
18:49:08	36.84	119.90
18:49:38	37.00	116.67
18:50:08	36.84	353.39
18:50:38	36.84	1596.58
18:51:08	36.84	2751.60
18:51:38	37.00	3068.22
18:52:08	37.17	3037.51
18:52:38	37.17	3016.22
18:53:08	37.00	2999.92
18:53:38	37.17	2985.93
18:54:08	37.17	2973.02
18:54:38	37.33	3053.69
18:55:08	37.49	3043.27
18:55:38	37.33	3034.84
18:56:38	37.33	3021.33
18:57:08	37.49	3015.07
18:57:38	37.49	3009.63
18:58:38	37.49	2997.75
18:59:08	37.66	2993.20
19:00:08	37.49	2982.38
19:01:08	37.66	2972.44
19:03:08	37.66	2955.72
19:03:38	37.66	2950.83
19:04:08	37.66	2947.48
19:05:08	37.66	2939.28
19:05:38	37.66	2935.48
19:06:08	37.66	2933.11
19:06:38	37.66	2928.84
19:08:38	37.66	2915.20
19:09:38	37.49	2907.87
19:10:08	37.49	2905.12
19:10:38	37.66	2901.73
19:11:08	37.33	2420.00
19:11:38	37.49	675.93
19:12:08	37.33	652.27
19:12:38	37.33	645.62
19:13:08	37.33	650.43
19:13:38	37.17	583.58
19:14:38	37.17	588.79
19:15:08	37.00	591.33
19:15:38	37.00	587.67
19:16:38	36.84	578.85
19:17:08	37.00	574.08
19:17:38	36.84	571.85
19:18:38	36.84	572.65
19:19:38	36.68	572.73
19:20:08	36.68	572.04
19:20:38	36.68	569.89
19:21:08	36.68	568.40
19:23:08	36.68	566.55
19:27:08	36.52	565.53
19:29:08	36.52	565.08
19:30:08	36.52	564.86
19:30:38	36.35	564.78

1st. GRADIENT STOP IN. LUB.

02-MAR-84	SDT degF	SDP psia
19:31:08	36.35	563.89
19:31:38	36.35	564.00
19:32:08	36.52	564.80
19:32:38	36.52	582.68
19:33:08	36.68	606.44
19:33:38	36.84	625.96
19:34:08	37.00	661.89
19:35:08	37.33	741.02
19:35:38	37.49	781.59
19:36:08	37.82	824.53
19:36:38	37.98	863.77
19:37:08	38.15	897.06
19:37:38	38.31	931.53
19:38:08	38.80	971.70
19:38:38	39.78	1012.79
19:39:08	40.91	1054.74
19:39:38	42.38	1094.94
19:40:38	45.47	1172.02
19:41:08	47.25	1199.11
19:41:38	48.87	1221.48
19:42:38	52.59	1262.67
19:43:08	54.37	1284.21
19:43:38	56.31	1309.55
19:44:08	57.92	1331.59
19:44:38	59.53	1346.88
19:45:08	61.30	1372.07
19:45:38	62.91	1400.99
19:46:38	66.12	1450.45
19:47:38	69.49	1508.86
19:48:08	71.25	1536.47
19:48:38	72.85	1561.57
19:49:08	74.44	1585.80
19:49:38	76.20	1615.34
19:50:08	77.79	1648.66
19:50:38	79.55	1678.80
19:51:08	81.30	1707.18
19:52:08	84.48	1756.84
19:52:38	86.22	1779.48
19:53:08	87.96	1804.19
19:53:38	89.55	1830.89
19:54:08	91.13	1856.16
19:55:08	94.45	1912.51
19:55:38	96.03	1938.99
19:56:08	97.76	1961.22
19:57:08	100.91	2004.50
19:57:38	102.64	2025.87
19:58:38	105.78	2067.63
19:59:08	107.50	2087.26
20:00:08	110.63	2123.70
20:00:38	112.04	2140.43
20:01:08	113.60	2153.71
20:01:38	115.16	2154.95
20:09:38	129.13	2154.32
20:13:38	132.22	2154.56
20:15:38	132.99	2154.67
20:16:08	133.30	2159.11
20:16:38	133.45	2174.26
20:17:38	134.07	2211.14
20:18:08	134.22	2229.22
20:18:38	134.68	2233.97
20:26:38	138.53	2234.07
20:30:38	139.61	2234.03

R. I. H.

2nd. GRADIENT STOP, 1591.7 mAHBDF

R. I. H.

3rd. GRADIENT STOP, 1691.7 mAHBDF

02-MAR-84	SDT degF	SDP psia
20:32:38	139.91	2234.00
20:33:08	139.91	2233.96
20:33:38	140.07	2232.29
20:34:08	139.91	2237.90
20:34:38	140.22	2247.44
20:35:08	140.07	2259.12
20:35:38	140.22	2270.07
20:36:08	140.38	2273.90
20:36:38	140.53	2274.10
20:37:08	140.68	2282.66
20:37:38	140.68	2283.71
20:38:08	140.99	2282.24
20:38:38	141.14	2283.92
20:39:08	141.30	2283.19
20:39:38	141.45	2283.26
20:40:08	141.60	2284.04
20:42:08	141.91	2284.16
20:44:08	142.37	2283.67
20:44:38	142.37	2284.02
20:45:08	142.52	2282.39
20:45:38	142.52	2284.26
20:46:08	142.68	2285.01
20:47:08	142.83	2290.88
20:49:08	143.14	2291.68
20:53:08	143.75	2291.83
20:55:08	144.06	2291.90
20:56:08	144.21	2291.48
20:56:38	144.21	2292.04
20:57:08	144.21	2291.62
20:58:08	144.36	2292.45
20:58:38	144.36	2291.38
20:59:08	144.36	2291.14
21:00:08	144.36	2291.85
21:01:08	144.52	2291.38
21:05:08	144.67	2291.65
21:07:08	144.82	2291.35
21:07:38	144.82	2291.12
21:08:38	144.97	2292.15
21:09:38	144.82	2291.43
21:10:08	144.97	2291.80
21:18:08	145.13	2291.44
21:34:08	145.13	2291.82
21:38:08	145.13	2291.79
21:38:38	145.28	2291.50
21:39:08	145.28	2167.85
21:39:38	145.28	2246.56
21:40:08	145.28	2271.38
21:40:38	145.13	2279.96
21:41:08	145.28	2283.87
21:41:38	145.28	2286.01
21:42:38	145.28	2288.07
21:44:38	145.59	2289.60
21:52:38	146.20	2290.58
22:00:38	146.50	2290.88
22:04:38	146.66	2290.98

R.I.H.

IN F-NIPPEL.1771 mAHBDF.

TIME 02-MAR-84	SDT degF	SDP psia	t-t0 HR	L(t-t0)	P-P0 psia	L(P-P0)	
22:05:38	146.66	2166.89	0.0083	-2.0792	124.09	2.0937	8/64"ADJ.CHOKE
22:06:08	146.50	2195.19	0.0167	-1.7782	95.79	1.9813	
22:06:38	146.66	2232.98	0.0250	-1.6021	58.00	1.7634	
22:07:08	146.66	2256.48	0.0333	-1.4771	34.50	1.5378	
22:07:38	146.81	2269.99	0.0417	-1.3802	20.99	1.3220	
22:08:08	146.66	2277.54	0.0500	-1.3010	13.44	1.1285	
22:08:38	146.81	2281.87	0.0583	-1.2341	9.11	0.9594	
22:09:08	146.81	2284.83	0.0667	-1.1761	6.15	0.7888	
22:09:38	146.96	2286.21	0.0750	-1.1249	4.77	0.6787	
22:10:08	146.96	2278.80	0.0833	-1.0792	12.18	1.0855	
22:10:38	146.96	2272.71	0.0917	-1.0378	18.27	1.2616	16/64"ADJ.CHOKE
22:11:08	147.27	2270.52	0.1000	-1.0000	20.46	1.3110	
22:11:38	147.27	2269.26	0.1083	-0.9652	21.72	1.3369	
22:12:08	147.27	2268.63	0.1167	-0.9331	22.35	1.3494	
22:12:38	147.27	2268.94	0.1250	-0.9031	22.04	1.3432	
22:13:08	147.42	2270.14	0.1333	-0.8751	20.84	1.3188	
22:14:08	147.42	2273.54	0.1500	-0.8239	17.44	1.2416	
22:14:38	147.42	2274.48	0.1583	-0.8004	16.50	1.2174	
22:15:08	147.58	2257.97	0.1667	-0.7782	33.01	1.5186	20/64"ADJ.CHOKE
22:15:38	147.58	2249.61	0.1750	-0.7570	41.37	1.6167	
22:16:08	147.58	2245.55	0.1833	-0.7368	45.43	1.6574	
22:16:38	147.58	2243.34	0.1917	-0.7175	47.64	1.6779	
22:17:38	147.73	2241.75	0.2083	-0.6812	49.23	1.6923	
22:19:38	147.88	2240.85	0.2417	-0.6168	50.13	1.7001	
22:21:38	147.88	2241.78	0.2750	-0.5607	49.20	1.6920	
22:22:38	148.03	2243.33	0.2917	-0.5351	47.65	1.6781	
22:24:38	148.19	2243.78	0.3250	-0.4881	47.20	1.6740	
22:25:38	148.03	2244.43	0.3417	-0.4664	46.55	1.6679	
22:27:38	148.34	2247.43	0.3750	-0.4260	43.55	1.6390	
22:28:08	148.49	2249.21	0.3833	-0.4164	41.77	1.6209	
22:29:08	148.34	2249.27	0.4000	-0.3979	41.71	1.6203	
22:30:08	148.49	2248.05	0.4167	-0.3802	42.93	1.6327	
22:32:08	148.64	2251.02	0.4500	-0.3468	39.96	1.6016	
22:36:08	148.80	2252.24	0.5167	-0.2868	38.74	1.5881	
22:40:08	148.95	2252.34	0.5833	-0.2341	38.64	1.5870	
22:41:08	148.95	2252.43	0.6000	-0.2218	38.55	1.5860	
22:42:08	148.95	2251.19	0.6167	-0.2099	39.79	1.5998	
22:43:08	148.95	2251.87	0.6333	-0.1984	39.11	1.5923	
22:47:08	148.95	2251.80	0.7000	-0.1549	39.18	1.5930	
22:48:08	148.95	2251.77	0.7167	-0.1447	39.21	1.5934	
22:49:08	148.95	2251.01	0.7333	-0.1347	39.97	1.6017	
22:49:38	148.95	2250.54	0.7417	-0.1298	40.44	1.6068	
22:53:38	149.10	2251.34	0.8083	-0.0924	39.64	1.5981	
22:55:38	148.95	2251.70	0.8417	-0.0749	39.28	1.5942	
22:57:38	149.10	2251.03	0.8750	-0.0580	39.95	1.6015	
23:01:38	149.10	2251.40	0.9417	-0.0261	39.58	1.5975	
23:03:38	149.10	2250.92	0.9750	-0.0110	40.06	1.6027	
23:04:08	149.10	2250.03	0.9833	-0.0073	40.95	1.6123	
23:05:08	149.10	2250.68	1.0000	0.0000	40.30	1.6053	
23:09:08	149.10	2250.69	1.0667	0.0280	40.29	1.6051	
23:10:08	149.10	2251.01	1.0833	0.0348	39.97	1.6017	
23:12:08	149.10	2250.40	1.1167	0.0479	40.58	1.6083	
23:14:08	149.26	2250.69	1.1500	0.0607	40.29	1.6052	
23:16:08	148.95	2250.28	1.1833	0.0731	40.70	1.6096	
23:17:08	149.10	2250.94	1.2000	0.0792	40.04	1.6025	
23:17:38	149.26	2251.11	1.2083	0.0822	39.87	1.6006	
23:18:38	149.26	2250.13	1.2250	0.0881	40.85	1.6112	
23:19:08	149.26	2249.62	1.2333	0.0911	41.36	1.6166	
23:21:08	149.10	2250.41	1.2667	0.1027	40.57	1.6082	
23:23:08	149.10	2250.45	1.3000	0.1139	40.53	1.6078	
23:25:08	149.10	2251.12	1.3333	0.1249	39.86	1.6006	
23:26:08	149.10	2249.96	1.3500	0.1303	41.02	1.6130	

TIME 02-MAR-84	SDT degF	SDP psia	t-t0 HR	L(t-t0)	P-P0 psia	L(P-P0)
23:27:08	149.26	2250.55	1.3667	0.1357	40.43	1.6067
23:28:08	149.10	2250.57	1.3833	0.1409	40.41	1.6065
23:30:08	149.26	2248.75	1.4167	0.1513	42.23	1.6256
23:31:08	149.26	2248.57	1.4333	0.1563	42.41	1.6274
23:32:08	149.26	2249.34	1.4500	0.1614	41.64	1.6195
23:32:38	149.26	2249.62	1.4583	0.1639	41.36	1.6166
23:33:08	149.10	2248.98	1.4667	0.1663	42.00	1.6232
23:35:08	149.26	2249.34	1.5000	0.1761	41.64	1.6195
23:36:08	149.26	2250.20	1.5167	0.1809	40.78	1.6104
23:36:38	149.26	2250.41	1.5250	0.1833	40.57	1.6082
23:37:38	149.26	2249.69	1.5417	0.1880	41.29	1.6158
23:38:38	149.26	2250.34	1.5583	0.1927	40.64	1.6089
23:39:38	149.26	2249.92	1.5750	0.1973	41.06	1.6134
23:40:08	149.26	2250.27	1.5833	0.1996	40.71	1.6097
23:42:08	149.26	2249.10	1.6167	0.2086	41.88	1.6220
23:46:08	149.26	2250.29	1.6833	0.2262	40.69	1.6095
23:47:08	149.26	2250.39	1.7000	0.2304	40.59	1.6084
23:49:08	149.10	2248.67	1.7333	0.2389	42.31	1.6265
23:51:08	149.26	2250.01	1.7667	0.2472	40.97	1.6125
23:52:08	149.10	2250.26	1.7833	0.2512	40.72	1.6098
23:53:08	149.26	2249.57	1.8000	0.2553	41.41	1.6171
23:55:08	149.26	2249.87	1.8333	0.2632	41.11	1.6140
23:56:08	149.26	2248.45	1.8500	0.2672	42.53	1.6287
00:00:08	149.26	2250.24	1.9167	0.2825	40.74	1.6101
00:02:08	149.41	2249.48	1.9500	0.2900	41.50	1.6181
00:02:38	149.26	2249.52	1.9583	0.2919	41.46	1.6177
00:03:08	149.26	2248.49	1.9667	0.2937	42.49	1.6283
00:04:08	149.26	2248.50	1.9833	0.2974	42.48	1.6282
00:05:08	149.26	2249.22	2.0000	0.3010	41.76	1.6208
00:06:08	149.10	2248.98	2.0167	0.3046	42.00	1.6232
00:08:08	149.26	2249.26	2.0500	0.3118	41.72	1.6204
00:09:08	149.26	2249.48	2.0667	0.3153	41.50	1.6180
00:11:08	149.26	2248.63	2.1000	0.3222	42.35	1.6269
00:13:08	149.26	2248.87	2.1333	0.3291	42.11	1.6244
00:15:08	149.41	2249.97	2.1667	0.3358	41.01	1.6129
00:16:08	149.26	2249.57	2.1833	0.3391	41.41	1.6171
00:16:38	149.26	2249.71	2.1917	0.3408	41.27	1.6156
00:17:38	149.41	2248.88	2.2083	0.3441	42.10	1.6243
00:18:08	149.10	2248.17	2.2167	0.3457	42.81	1.6315
00:19:08	149.41	2249.07	2.2333	0.3490	41.91	1.6223
00:21:08	149.26	2249.62	2.2667	0.3554	41.36	1.6166
00:22:08	149.26	2249.13	2.2833	0.3586	41.85	1.6217
00:24:08	149.26	2249.33	2.3167	0.3649	41.65	1.6197
00:26:08	149.26	2248.66	2.3500	0.3711	42.32	1.6265
00:28:08	149.41	2249.29	2.3833	0.3772	41.69	1.6201
00:30:08	149.26	2249.29	2.4167	0.3832	41.69	1.6200
00:30:38	149.26	2248.87	2.4250	0.3847	42.11	1.6244
00:31:38	149.26	2249.20	2.4417	0.3877	41.78	1.6209
00:32:08	149.26	2249.10	2.4500	0.3892	41.88	1.6220
00:33:08	149.41	2248.22	2.4667	0.3921	42.76	1.6311
00:35:08	149.26	2249.22	2.5000	0.3979	41.76	1.6208
00:36:08	149.26	2249.50	2.5167	0.4008	41.48	1.6178
00:40:08	149.26	2248.52	2.5833	0.4122	42.46	1.6280
00:41:08	149.26	2248.29	2.6000	0.4150	42.69	1.6303
00:45:08	149.26	2249.17	2.6667	0.4260	41.81	1.6213
00:49:08	149.41	2248.94	2.7333	0.4367	42.04	1.6237
00:51:08	149.26	2249.87	2.7667	0.4420	41.11	1.6140
00:52:08	149.26	2250.15	2.7833	0.4446	40.83	1.6110
00:54:08	149.41	2249.55	2.8167	0.4497	41.43	1.6173
00:54:38	149.41	2249.21	2.8250	0.4510	41.77	1.6208
00:55:08	149.26	2248.24	2.8333	0.4523	42.74	1.6308
00:55:38	149.41	2247.94	2.8417	0.4536	43.04	1.6339

TIME 03-MAR-84	SDT degF	SDP psia	t-t0 HR	L(t-t0)	P-P0 psia	L(P-P0)
00:56:38	149.41	2249.15	2.8583	0.4561	41.83	1.6215
01:00:38	149.41	2249.07	2.9250	0.4661	41.91	1.6223
01:01:38	149.41	2248.76	2.9417	0.4686	42.22	1.6255
01:02:38	149.41	2247.83	2.9583	0.4710	43.15	1.6350
01:04:38	149.26	2249.19	2.9917	0.4759	41.79	1.6211
01:05:08	149.41	2248.74	3.0000	0.4771	42.24	1.6257
01:09:08	149.41	2249.41	3.0667	0.4867	41.57	1.6188
01:09:38	149.41	2247.99	3.0750	0.4878	42.99	1.6334
01:11:38	149.41	2249.15	3.1083	0.4925	41.83	1.6215
01:15:38	149.26	2249.55	3.1750	0.5017	41.43	1.6173
01:17:38	149.41	2248.15	3.2083	0.5063	42.83	1.6318
01:19:38	149.41	2249.32	3.2417	0.5108	41.66	1.6197
01:20:38	149.41	2249.72	3.2583	0.5130	41.26	1.6155
01:22:38	149.41	2249.01	3.2917	0.5174	41.97	1.6230
01:23:08	149.26	2249.13	3.3000	0.5185	41.85	1.6217
01:24:08	149.41	2248.04	3.3167	0.5207	42.94	1.6328
01:24:38	149.56	2247.41	3.3250	0.5218	43.57	1.6392
01:25:38	149.41	2248.81	3.3417	0.5240	42.17	1.6250
01:27:38	149.41	2249.42	3.3750	0.5283	41.56	1.6186
01:29:38	149.56	2249.24	3.4083	0.5325	41.74	1.6205
01:30:38	149.56	2249.32	3.4250	0.5347	41.66	1.6198
01:31:38	149.41	2247.96	3.4417	0.5368	43.02	1.6337
01:32:08	149.41	2247.45	3.4500	0.5378	43.53	1.6388
01:34:08	149.56	2249.30	3.4833	0.5420	41.68	1.6200
01:34:38	149.41	2248.88	3.4917	0.5430	42.10	1.6243
01:36:38	149.56	2248.88	3.5250	0.5472	42.10	1.6243
01:37:38	149.56	2248.96	3.5417	0.5492	42.02	1.6234
01:39:38	149.41	2247.90	3.5750	0.5533	43.08	1.6343
01:40:08	149.56	2247.58	3.5833	0.5543	43.40	1.6375
01:42:08	149.56	2249.30	3.6167	0.5583	41.68	1.6200
01:43:08	149.56	2249.51	3.6333	0.5603	41.47	1.6178
01:44:08	149.41	2249.11	3.6500	0.5623	41.87	1.6219
01:44:38	149.41	2249.27	3.6583	0.5633	41.71	1.6203
01:45:08	149.41	2247.96	3.6667	0.5643	43.02	1.6337
01:47:08	149.41	2247.87	3.7000	0.5682	43.11	1.6346
01:47:38	149.56	2247.16	3.7083	0.5692	43.82	1.6416
01:48:38	149.41	2247.64	3.7250	0.5711	43.34	1.6369
01:49:38	149.41	2248.71	3.7417	0.5731	42.27	1.6261
01:51:38	149.41	2249.21	3.7750	0.5769	41.77	1.6208
01:52:38	149.56	2249.04	3.7917	0.5788	41.94	1.6227
01:53:38	149.41	2247.13	3.8083	0.5807	43.85	1.6419
01:54:08	149.41	2248.08	3.8167	0.5817	42.90	1.6325
01:56:08	149.41	2248.72	3.8500	0.5855	42.26	1.6259
01:57:08	149.56	2249.35	3.8667	0.5873	41.63	1.6194
01:58:08	149.41	2249.39	3.8833	0.5892	41.59	1.6190
01:59:08	149.41	2248.15	3.9000	0.5911	42.83	1.6318
02:00:08	149.26	2248.42	3.9167	0.5929	42.56	1.6290
02:01:08	149.56	2247.90	3.9333	0.5948	43.08	1.6343
02:01:38	149.41	2248.38	3.9417	0.5957	42.60	1.6295
02:02:08	149.41	2248.01	3.9500	0.5966	42.97	1.6332
02:03:08	149.41	2248.66	3.9667	0.5984	42.32	1.6266
02:05:08	149.56	2249.04	4.0000	0.6021	41.94	1.6227
02:06:08	149.41	2248.85	4.0167	0.6039	42.13	1.6246
02:06:38	149.56	2248.19	4.0250	0.6048	42.79	1.6313
02:07:08	149.56	2248.25	4.0333	0.6057	42.73	1.6308
02:07:38	149.56	2247.27	4.0417	0.6066	43.71	1.6406
02:08:38	149.41	2247.20	4.0583	0.6083	43.78	1.6412
02:10:38	149.56	2248.74	4.0917	0.6119	42.24	1.6257
02:14:38	149.41	2248.94	4.1583	0.6189	42.04	1.6237
02:15:38	149.41	2247.53	4.1750	0.6207	43.45	1.6379
02:16:38	149.41	2248.44	4.1917	0.6224	42.54	1.6287
02:17:38	149.56	2248.00	4.2083	0.6241	42.98	1.6332

TIME 03-MAR-84	SDT degF	SDP psia	t-t0 HR	L(t-t0)	P-P0 psia	L(P-P0)
02:18:38	149.41	2248.64	4.2250	0.6258	42.34	1.6268
02:19:08	149.56	2248.25	4.2333	0.6267	42.73	1.6308
02:21:08	149.56	2248.84	4.2667	0.6301	42.14	1.6247
02:21:38	149.41	2248.99	4.2750	0.6309	41.99	1.6232
02:22:38	149.41	2247.41	4.2917	0.6326	43.57	1.6392
02:24:38	149.56	2248.53	4.3250	0.6360	42.45	1.6279
02:28:38	149.56	2248.72	4.3917	0.6426	42.26	1.6259
02:29:38	149.56	2247.60	4.4083	0.6443	43.38	1.6373
02:30:08	149.41	2247.27	4.4167	0.6451	43.71	1.6406
02:31:08	149.56	2248.09	4.4333	0.6467	42.89	1.6324
02:31:38	149.56	2248.49	4.4417	0.6475	42.49	1.6283
02:32:38	149.41	2247.96	4.4583	0.6492	43.02	1.6337
02:34:38	149.56	2249.02	4.4917	0.6524	41.96	1.6229
02:35:38	149.41	2249.23	4.5083	0.6540	41.75	1.6206
02:37:38	149.41	2247.73	4.5417	0.6572	43.25	1.6360
02:39:38	149.56	2247.99	4.5750	0.6604	42.99	1.6334
02:40:38	149.41	2248.58	4.5917	0.6620	42.40	1.6273
02:42:38	149.41	2248.66	4.6250	0.6651	42.32	1.6266
02:43:38	149.56	2248.65	4.6417	0.6667	42.33	1.6266
02:44:38	149.56	2247.41	4.6583	0.6682	43.57	1.6392
02:45:08	149.41	2247.15	4.6667	0.6690	43.83	1.6418
02:47:08	149.41	2248.02	4.7000	0.6721	42.96	1.6330
02:47:38	149.56	2247.81	4.7083	0.6729	43.17	1.6352
02:48:38	149.56	2248.48	4.7250	0.6744	42.50	1.6284
02:50:38	149.41	2248.60	4.7583	0.6775	42.38	1.6271
02:51:08	149.41	2248.55	4.7667	0.6782	42.43	1.6277
02:52:08	149.41	2247.03	4.7833	0.6797	43.95	1.6430
02:54:08	149.41	2248.20	4.8167	0.6827	42.78	1.6312
02:56:08	149.41	2248.64	4.8500	0.6857	42.34	1.6268
02:58:08	149.56	2248.19	4.8833	0.6887	42.79	1.6313
02:58:38	149.41	2248.44	4.8917	0.6895	42.54	1.6287
02:59:38	149.56	2247.23	4.9083	0.6909	43.75	1.6409
03:00:38	149.56	2247.27	4.9250	0.6924	43.71	1.6406
03:01:38	149.41	2246.05	4.9417	0.6939	44.93	1.6526
03:03:38	149.41	2248.08	4.9750	0.6968	42.90	1.6325
03:04:38	149.56	2248.37	4.9917	0.6982	42.61	1.6295
03:05:38	149.56	2247.77	5.0083	0.6997	43.21	1.6355
03:06:38	149.41	2246.57	5.0250	0.7011	44.41	1.6475
03:08:38	149.41	2247.71	5.0583	0.7040	43.27	1.6362
03:12:38	149.41	2248.27	5.1250	0.7097	42.71	1.6305
03:13:38	149.56	2247.85	5.1417	0.7111	43.13	1.6348
03:14:08	149.56	2246.88	5.1500	0.7118	44.10	1.6444
03:15:08	149.41	2246.89	5.1667	0.7132	44.09	1.6444
03:16:08	149.41	2247.87	5.1833	0.7146	43.11	1.6346
03:18:08	149.56	2247.79	5.2167	0.7174	43.19	1.6354
03:19:08	149.41	2248.36	5.2333	0.7188	42.62	1.6296
03:20:08	149.41	2247.82	5.2500	0.7202	43.16	1.6351
03:21:08	149.56	2246.48	5.2667	0.7215	44.50	1.6484
03:21:38	149.41	2246.08	5.2750	0.7222	44.90	1.6522
03:23:38	149.56	2247.08	5.3083	0.7250	43.90	1.6425
03:25:38	149.56	2247.36	5.3417	0.7277	43.62	1.6397
03:26:38	149.41	2247.24	5.3583	0.7290	43.74	1.6409
03:27:38	149.41	2248.02	5.3750	0.7304	42.96	1.6330
03:29:38	149.56	2247.13	5.4083	0.7331	43.85	1.6420
03:31:38	149.41	2247.50	5.4417	0.7357	43.48	1.6383
03:32:38	149.56	2247.32	5.4583	0.7371	43.66	1.6401
03:34:38	149.41	2247.83	5.4917	0.7397	43.15	1.6350
03:36:38	149.56	2246.92	5.5250	0.7423	44.06	1.6441
03:37:38	149.56	2246.83	5.5417	0.7436	44.15	1.6449
03:39:38	149.41	2247.73	5.5750	0.7462	43.25	1.6360
03:40:38	149.56	2248.00	5.5917	0.7475	42.98	1.6332
03:41:38	149.56	2247.51	5.6083	0.7488	43.47	1.6382

TIME	SDT degF	SDP psia	t-t0 HR	L(t-t0)	P-P0 psia	L(P-P0)
03-MAR-84						
03:42:08	149.56	2247.81	5.6167	0.7495	43.17	1.6352
03:43:08	149.41	2246.80	5.6333	0.7508	44.18	1.6452
03:45:08	149.41	2246.48	5.6667	0.7533	44.50	1.6483
03:49:08	149.41	2247.53	5.7333	0.7584	43.45	1.6379
03:50:08	149.41	2247.29	5.7500	0.7597	43.69	1.6404
03:51:08	149.41	2246.38	5.7667	0.7609	44.60	1.6493
03:53:08	149.56	2247.46	5.8000	0.7634	43.52	1.6387
03:54:08	149.56	2247.69	5.8167	0.7647	43.29	1.6364
03:54:38	149.56	2247.90	5.8250	0.7653	43.08	1.6343
03:55:38	149.56	2247.43	5.8417	0.7665	43.55	1.6390
03:56:38	149.56	2247.69	5.8583	0.7678	43.29	1.6364
03:57:08	149.41	2247.71	5.8667	0.7684	43.27	1.6362
03:58:08	149.56	2246.46	5.8833	0.7696	44.52	1.6485
03:59:08	149.56	2246.94	5.9000	0.7709	44.04	1.6439
03:59:38	149.56	2247.15	5.9083	0.7715	43.83	1.6418
04:00:38	149.56	2246.57	5.9250	0.7727	44.41	1.6475
04:02:38	149.56	2247.50	5.9583	0.7751	43.48	1.6383
04:04:38	149.41	2246.94	5.9917	0.7775	44.04	1.6438
04:05:08	149.41	2247.13	6.0000	0.7782	43.85	1.6419
04:06:08	149.56	2246.55	6.0167	0.7794	44.43	1.6477
04:08:08	149.41	2247.24	6.0500	0.7818	43.74	1.6409
04:09:08	149.56	2247.51	6.0667	0.7830	43.47	1.6382
04:10:08	149.41	2247.01	6.0833	0.7841	43.97	1.6432
04:11:08	149.41	2247.33	6.1000	0.7853	43.65	1.6400
04:11:38	149.41	2247.39	6.1083	0.7859	43.59	1.6393
04:12:08	149.41	2246.47	6.1167	0.7865	44.51	1.6485
04:13:08	149.56	2246.36	6.1333	0.7877	44.62	1.6496
04:14:08	149.56	2246.86	6.1500	0.7889	44.12	1.6446
04:15:08	149.41	2246.61	6.1667	0.7901	44.37	1.6471
04:16:08	149.56	2247.23	6.1833	0.7912	43.75	1.6409
04:17:08	149.41	2246.80	6.2000	0.7924	44.18	1.6452
04:17:38	149.41	2246.36	6.2083	0.7930	44.62	1.6495
04:18:38	149.56	2247.06	6.2250	0.7941	43.92	1.6427
04:20:38	149.41	2246.10	6.2583	0.7965	44.88	1.6521
04:22:38	149.41	2247.15	6.2917	0.7988	43.83	1.6418
04:24:38	149.56	2246.38	6.3250	0.8011	44.60	1.6494
04:25:38	149.56	2246.80	6.3417	0.8022	44.18	1.6453
04:26:08	149.41	2246.83	6.3500	0.8028	44.15	1.6449
04:27:08	149.56	2245.61	6.3667	0.8039	45.37	1.6568
04:29:08	149.41	2246.43	6.4000	0.8062	44.55	1.6488
04:31:08	149.56	2246.57	6.4333	0.8084	44.41	1.6475
04:31:38	149.56	2246.31	6.4417	0.8090	44.67	1.6501
04:33:38	149.41	2247.03	6.4750	0.8112	43.95	1.6430
04:34:38	149.41	2245.45	6.4917	0.8124	45.53	1.6583
04:35:38	149.56	2245.47	6.5083	0.8135	45.51	1.6582
04:36:38	149.41	2246.47	6.5250	0.8146	44.51	1.6485
04:38:38	149.41	2246.89	6.5583	0.8168	44.09	1.6444
04:40:38	149.41	2246.29	6.5917	0.8190	44.69	1.6502
04:41:08	149.41	2246.45	6.6000	0.8195	44.53	1.6487
04:42:08	149.41	2245.63	6.6167	0.8206	45.35	1.6566
04:46:08	149.56	2246.66	6.6833	0.8250	44.32	1.6466
04:47:08	149.56	2246.80	6.7000	0.8261	44.18	1.6453
04:47:38	149.56	2247.16	6.7083	0.8266	43.82	1.6416
04:49:38	149.41	2245.82	6.7417	0.8288	45.16	1.6548
04:53:38	149.41	2246.68	6.8083	0.8330	44.30	1.6464
04:54:38	149.56	2246.24	6.8250	0.8341	44.74	1.6507
04:55:38	149.56	2246.67	6.8417	0.8352	44.31	1.6465
04:56:38	149.56	2245.92	6.8583	0.8362	45.06	1.6538
04:57:08	149.41	2245.35	6.8667	0.8367	45.63	1.6593
04:59:08	149.41	2246.47	6.9000	0.8388	44.51	1.6485
05:00:08	149.41	2245.73	6.9167	0.8399	45.25	1.6556
05:02:08	149.56	2245.96	6.9500	0.8420	45.02	1.6535

TIME 03-MAR-84	SDT degF	SDP psia	t-t0 HR	L(t-t0)	P-P0 psia	L(P-P0)
05:04:08	149.56	2245.54	6.9833	0.8441	45.44	1.6575
05:05:08	149.41	2245.17	7.0000	0.8451	45.81	1.6609
05:07:08	149.56	2246.36	7.0333	0.8472	44.62	1.6496
05:07:38	149.56	2245.96	7.0417	0.8477	45.02	1.6535
05:08:08	149.56	2246.43	7.0500	0.8482	44.55	1.6489
05:08:38	149.56	2246.17	7.0583	0.8487	44.81	1.6514
05:09:38	149.56	2246.69	7.0750	0.8497	44.29	1.6463
05:10:38	149.41	2246.45	7.0917	0.8507	44.53	1.6487
05:11:38	149.56	2244.54	7.1083	0.8518	46.44	1.6669
05:12:38	149.56	2245.52	7.1250	0.8528	45.46	1.6577
05:14:38	149.41	2245.54	7.1583	0.8548	45.44	1.6574
05:18:38	149.41	2246.33	7.2250	0.8588	44.65	1.6498
05:19:38	149.41	2245.31	7.2417	0.8598	45.67	1.6596
05:23:38	149.41	2246.27	7.3083	0.8638	44.71	1.6504
05:27:38	149.56	2245.26	7.3750	0.8678	45.72	1.6602
05:28:38	149.56	2245.64	7.3917	0.8687	45.34	1.6565
05:29:08	149.41	2245.26	7.4000	0.8692	45.72	1.6601
05:30:08	149.56	2246.13	7.4167	0.8702	44.85	1.6518
05:30:38	149.56	2246.29	7.4250	0.8707	44.69	1.6502
05:32:38	149.41	2246.03	7.4583	0.8726	44.95	1.6527
05:34:38	149.41	2245.12	7.4917	0.8746	45.86	1.6614
05:35:38	149.41	2245.87	7.5083	0.8755	45.11	1.6542
05:36:38	149.41	2245.49	7.5250	0.8765	45.49	1.6579
05:40:38	149.41	2246.43	7.5917	0.8803	44.55	1.6488
05:41:08	149.56	2245.13	7.6000	0.8808	44.85	1.6518
05:41:38	149.41	2245.23	7.6083	0.8813	45.75	1.6604
05:42:08	149.41	2245.66	7.6167	0.8818	45.32	1.6563
05:42:38	149.41	2245.14	7.6250	0.8822	45.84	1.6613
05:44:38	149.41	2246.17	7.6583	0.8841	44.81	1.6514
05:46:38	149.41	2246.19	7.6917	0.8860	44.79	1.6512
05:47:38	149.56	2246.09	7.7083	0.8870	44.89	1.6521
05:48:08	149.41	2246.06	7.7167	0.8874	44.92	1.6524
05:48:38	149.56	2245.24	7.7250	0.8879	45.74	1.6603
05:49:38	149.41	2244.98	7.7417	0.8888	46.00	1.6628
05:51:38	149.56	2245.78	7.7750	0.8907	45.20	1.6551
05:52:38	149.56	2245.54	7.7917	0.8916	45.44	1.6575
05:54:38	149.56	2246.04	7.8250	0.8935	44.94	1.6526
05:56:38	149.56	2245.43	7.8583	0.8953	45.55	1.6585
05:57:38	149.56	2245.19	7.8750	0.8963	45.79	1.6608
05:59:38	149.56	2245.62	7.9083	0.8981	45.36	1.6566
06:00:08	149.56	2251.06	7.9167	0.8985	39.92	1.6011
06:00:38	149.56	2262.96	7.9250	0.8990	28.02	1.4474
06:01:08	149.41	2270.93	7.9333	0.8995	20.05	1.3021
06:01:38	149.41	2260.52	7.9417	0.8999	30.46	1.4837
06:02:08	149.56	2249.09	7.9500	0.9004	41.89	1.6221
06:02:38	149.56	2242.60	7.9583	0.9008	48.38	1.6847
06:03:08	149.56	2238.43	7.9667	0.9013	52.55	1.7206
06:03:38	149.71	2237.01	7.9750	0.9017	53.97	1.7322
06:04:38	149.56	2236.09	7.9917	0.9026	54.89	1.7395
06:05:08	149.56	2235.46	8.0000	0.9031	55.52	1.7445
06:05:38	149.56	2233.88	8.0083	0.9035	57.10	1.7566
06:06:38	149.56	2233.11	8.0250	0.9044	57.87	1.7624
06:07:08	149.56	2232.18	8.0333	0.9049	58.80	1.7694
06:07:38	149.41	2233.38	8.0417	0.9053	57.60	1.7604
06:08:08	149.56	2233.23	8.0500	0.9058	57.75	1.7615
06:08:38	149.56	2234.28	8.0583	0.9062	56.70	1.7536
06:09:38	149.56	2234.23	8.0750	0.9071	56.75	1.7540
06:10:08	149.56	2231.40	8.0833	0.9076	59.58	1.7751
06:10:38	149.56	2229.45	8.0917	0.9080	61.53	1.7891
06:11:08	149.56	2228.33	8.1000	0.9085	62.65	1.7969
06:12:08	149.56	2227.34	8.1167	0.9094	63.64	1.8038
06:13:08	149.56	2228.86	8.1333	0.9103	62.12	1.7932

28/64"ADJ. CHOKE

TIME 03-MAR-84	SdT degF	SDF psia	t-t0 HR	L(t-t0)	P-P0 psia	L(P-P0)
06:13:38	149.56	2229.72	8.1417	0.9107	61.26	1.7872
06:14:38	149.71	2229.50	8.1583	0.9116	61.48	1.7887
06:15:08	149.56	2219.06	8.1667	0.9120	71.92	1.8569
06:15:38	149.56	2213.78	8.1750	0.9125	77.20	1.8876
06:16:08	149.56	2210.00	8.1833	0.9129	80.98	1.9084
06:16:38	149.41	2207.38	8.1917	0.9134	83.60	1.9222
06:17:08	149.56	2205.46	8.2000	0.9138	85.52	1.9320
06:18:08	149.56	2203.47	8.2167	0.9147	87.51	1.9421
06:18:38	149.56	2202.56	8.2250	0.9151	88.42	1.9466
06:19:08	149.56	2202.52	8.2333	0.9156	88.46	1.9467
06:19:38	149.56	2201.55	8.2417	0.9160	89.43	1.9515
06:21:38	149.56	2201.47	8.2750	0.9178	89.51	1.9518
06:22:38	149.71	2201.10	8.2917	0.9186	89.88	1.9536
06:23:08	149.56	2200.57	8.3000	0.9191	90.41	1.9562
06:24:08	149.71	2201.10	8.3167	0.9199	89.88	1.9536
06:32:08	149.87	2200.77	8.4500	0.9269	90.21	1.9553
06:34:08	149.71	2200.21	8.4833	0.9286	90.77	1.9579
06:36:08	149.71	2200.42	8.5167	0.9303	90.56	1.9569
06:38:08	149.87	2199.91	8.5500	0.9320	91.07	1.9594
06:39:08	149.71	2200.00	8.5667	0.9328	90.98	1.9589
06:40:08	149.71	2199.49	8.5833	0.9337	91.49	1.9614
06:40:38	149.87	2198.61	8.5917	0.9341	92.37	1.9655
06:44:38	149.87	2199.23	8.6583	0.9374	91.75	1.9626
06:46:38	149.87	2198.70	8.6917	0.9391	92.28	1.9651
06:47:08	149.71	2198.60	8.7000	0.9395	92.38	1.9656
06:48:08	149.71	2197.20	8.7167	0.9404	93.78	1.9721
06:48:38	149.71	2196.78	8.7250	0.9408	94.20	1.9740
06:52:38	149.87	2197.30	8.7917	0.9441	93.68	1.9716
06:54:38	149.71	2197.08	8.8250	0.9457	93.90	1.9727
06:55:38	149.87	2196.72	8.8417	0.9465	94.26	1.9743
06:56:38	149.87	2197.69	8.8583	0.9474	93.29	1.9699
06:57:38	149.87	2198.00	8.8750	0.9482	92.98	1.9684
06:59:38	150.02	2197.02	8.9083	0.9498	93.96	1.9730
07:01:38	149.87	2196.81	8.9417	0.9514	94.17	1.9739
07:02:08	149.87	2196.22	8.9500	0.9518	94.76	1.9766
07:02:38	150.02	2196.54	8.9583	0.9522	94.44	1.9751
07:03:08	149.87	2196.04	8.9667	0.9526	94.94	1.9774
07:04:08	149.87	2196.76	8.9833	0.9534	94.22	1.9741
07:08:08	149.87	2196.92	9.0500	0.9566	94.06	1.9734
07:08:38	150.02	2196.75	9.0583	0.9570	94.23	1.9742
07:09:38	150.02	2195.60	9.0750	0.9578	95.38	1.9795
07:11:38	149.87	2196.29	9.1083	0.9594	94.69	1.9763
07:12:38	149.87	2196.99	9.1250	0.9602	93.99	1.9731
07:14:38	150.02	2197.21	9.1583	0.9618	93.77	1.9721
07:15:38	149.87	2197.65	9.1750	0.9626	93.33	1.9700
07:17:38	149.87	2196.11	9.2083	0.9642	94.87	1.9771
07:18:38	149.87	2196.86	9.2250	0.9650	94.12	1.9737
07:19:38	149.87	2196.74	9.2417	0.9658	94.24	1.9742
07:20:38	149.87	2195.69	9.2583	0.9665	95.29	1.9790
07:22:38	149.87	2195.97	9.2917	0.9681	95.01	1.9778
07:23:08	150.02	2196.53	9.3000	0.9685	94.45	1.9752
07:24:08	149.87	2196.04	9.3167	0.9693	94.94	1.9774
07:24:38	149.87	2196.22	9.3250	0.9696	94.76	1.9766
07:25:08	150.02	2195.46	9.3333	0.9700	95.52	1.9801
07:27:08	149.87	2196.81	9.3667	0.9716	94.17	1.9739
07:27:38	149.87	2196.79	9.3750	0.9720	94.19	1.9740
07:28:08	149.87	2196.04	9.3833	0.9724	94.94	1.9774
07:30:08	150.02	2196.65	9.4167	0.9739	94.33	1.9747
07:32:08	150.02	2196.42	9.4500	0.9754	94.56	1.9757
07:32:38	149.87	2195.71	9.4583	0.9758	95.27	1.9790
07:36:38	150.02	2196.54	9.5250	0.9789	94.44	1.9751
07:38:38	150.02	2196.28	9.5583	0.9804	94.70	1.9763

28/64"FIX.CHOKE

TIME 03-MAR-84	SDT degF	SDP psia	t-t0 HR	L(t-t0)	P-P0 psia	L(P-P0)
07:39:38	150.02	2195.88	9.5750	0.9811	95.10	1.9782
07:43:38	150.17	2196.40	9.6417	0.9842	94.58	1.9758
07:45:38	150.17	2196.33	9.6750	0.9857	94.65	1.9761
07:46:38	150.17	2195.86	9.6917	0.9864	95.12	1.9783
07:47:08	150.02	2195.46	9.7000	0.9868	95.52	1.9801
07:51:08	150.02	2196.60	9.7667	0.9897	94.38	1.9749
07:53:08	150.02	2196.26	9.8000	0.9912	94.72	1.9764
07:54:08	150.17	2195.68	9.8167	0.9920	95.30	1.9791
07:54:38	150.02	2195.90	9.8250	0.9923	95.08	1.9781
07:55:38	150.02	2195.37	9.8417	0.9931	95.61	1.9805
07:57:38	150.02	2196.09	9.8750	0.9945	94.89	1.9772
07:59:38	150.02	2195.74	9.9083	0.9960	95.24	1.9788
08:00:38	150.02	2196.04	9.9250	0.9967	94.94	1.9775
08:02:38	150.17	2195.52	9.9583	0.9982	95.46	1.9798
08:06:38	150.02	2196.37	10.0250	1.0011	94.61	1.9759
08:08:38	150.17	2195.63	10.0583	1.0025	95.35	1.9793
08:09:38	150.17	2194.65	10.0750	1.0032	96.33	1.9838
08:11:38	150.02	2195.56	10.1083	1.0047	95.42	1.9796
08:12:08	150.02	2194.58	10.1167	1.0050	96.40	1.9841
08:13:08	150.02	2194.23	10.1333	1.0058	96.75	1.9856
08:13:38	150.17	2194.58	10.1417	1.0061	96.40	1.9841
08:14:38	150.02	2193.87	10.1583	1.0068	97.11	1.9873
08:15:08	150.02	2194.08	10.1667	1.0072	96.90	1.9863
08:15:38	150.17	2195.04	10.1750	1.0075	95.94	1.9820
08:16:38	150.02	2194.90	10.1917	1.0082	96.08	1.9826
08:17:38	150.02	2194.09	10.2083	1.0090	96.89	1.9863
08:18:38	150.02	2195.00	10.2250	1.0097	95.98	1.9822
08:19:38	150.17	2194.74	10.2417	1.0104	96.24	1.9834
08:20:38	150.17	2195.75	10.2583	1.0111	95.23	1.9788
08:21:38	150.02	2194.71	10.2750	1.0118	96.27	1.9835
08:22:38	150.17	2195.19	10.2917	1.0125	95.79	1.9813
08:23:08	150.17	2195.49	10.3000	1.0128	95.49	1.9800
08:23:38	150.17	2194.32	10.3083	1.0132	96.66	1.9853
08:25:38	150.17	2194.79	10.3417	1.0146	96.19	1.9831
08:26:08	150.02	2195.30	10.3500	1.0149	95.68	1.9808
08:26:38	150.02	2194.78	10.3583	1.0153	96.20	1.9832
08:27:08	150.17	2194.95	10.3667	1.0156	96.03	1.9824
08:27:38	150.17	2194.51	10.3750	1.0160	96.47	1.9844
08:28:38	150.02	2194.69	10.3917	1.0167	96.29	1.9836
08:29:08	150.17	2194.51	10.4000	1.0170	96.47	1.9844
08:30:08	150.17	2195.28	10.4167	1.0177	95.70	1.9809
08:32:08	150.02	2194.55	10.4500	1.0191	96.43	1.9842
08:34:08	150.17	2195.35	10.4833	1.0205	95.63	1.9806
08:36:08	150.02	2195.51	10.5167	1.0219	95.47	1.9799
08:38:08	150.17	2195.02	10.5500	1.0233	95.96	1.9821
08:39:08	150.02	2194.48	10.5667	1.0239	96.50	1.9845
08:43:08	150.17	2195.07	10.6333	1.0267	95.91	1.9819
08:45:08	150.17	2194.58	10.6667	1.0280	96.40	1.9841
08:46:08	150.17	2194.18	10.6833	1.0287	96.80	1.9859
08:50:08	150.02	2195.02	10.7500	1.0314	95.96	1.9821
08:52:08	150.02	2194.94	10.7833	1.0328	96.04	1.9825
08:53:08	150.17	2194.05	10.8000	1.0334	96.93	1.9864
08:57:08	150.17	2194.53	10.8667	1.0361	96.45	1.9843
09:05:08	150.17	2194.32	11.0000	1.0414	96.66	1.9853
09:07:08	150.32	2194.47	11.0333	1.0427	96.51	1.9846
09:08:08	150.17	2193.88	11.0500	1.0434	97.10	1.9872
09:12:08	150.32	2194.49	11.1167	1.0460	96.49	1.9845
09:14:08	150.32	2194.38	11.1500	1.0473	96.60	1.9850
09:16:08	150.17	2193.64	11.1833	1.0486	97.34	1.9883
09:20:08	150.32	2194.49	11.2500	1.0512	96.49	1.9845
09:21:08	150.17	2194.58	11.2667	1.0518	96.40	1.9841
09:22:08	150.17	2193.62	11.2833	1.0524	97.36	1.9884

TIME 03-MAR-84	SDT degF	SDP psia	t-t0 HR	L(t-t0)	P-P0 psia	L(P-P0)
09:22:38	150.32	2193.33	11.2917	1.0528	97.65	1.9897
09:23:08	150.32	2193.81	11.3000	1.0531	97.17	1.9876
09:23:38	150.17	2192.83	11.3083	1.0534	98.15	1.9919
09:25:38	150.17	2193.53	11.3417	1.0547	97.45	1.9888
09:26:38	150.17	2193.93	11.3583	1.0553	97.05	1.9870
09:27:38	150.17	2192.83	11.3750	1.0560	98.15	1.9919
09:28:38	150.17	2193.83	11.3917	1.0566	97.15	1.9875
09:30:38	150.17	2193.50	11.4250	1.0579	97.48	1.9889
09:31:38	150.32	2194.07	11.4417	1.0585	96.91	1.9864
09:32:38	150.17	2194.02	11.4583	1.0591	96.96	1.9866
09:33:38	150.17	2193.04	11.4750	1.0598	97.94	1.9910
09:34:38	150.32	2193.56	11.4917	1.0604	97.42	1.9886
09:35:38	150.48	2192.75	11.5083	1.0610	98.23	1.9922
09:39:38	150.17	2193.97	11.5750	1.0635	97.01	1.9868
09:41:38	150.32	2192.69	11.6083	1.0648	98.29	1.9925
09:43:38	150.17	2193.67	11.6417	1.0660	97.31	1.9882
09:44:38	150.32	2193.72	11.6583	1.0666	97.26	1.9879
09:45:08	150.32	2193.54	11.6667	1.0669	97.44	1.9887
09:46:08	150.17	2194.32	11.6833	1.0676	96.66	1.9853
09:47:08	150.32	2194.19	11.7000	1.0682	96.79	1.9858
09:48:08	150.17	2193.37	11.7167	1.0688	97.61	1.9895
09:52:08	150.17	2193.88	11.7833	1.0713	97.10	1.9872
09:56:08	150.17	2193.48	11.8500	1.0737	97.50	1.9890
09:58:08	150.32	2193.67	11.8833	1.0749	97.31	1.9882
10:02:08	150.32	2192.81	11.9500	1.0774	98.17	1.9920
10:02:38	150.32	2193.25	11.9583	1.0777	97.73	1.9900
10:03:38	150.48	2192.28	11.9750	1.0783	98.70	1.9943
10:04:38	150.32	2193.30	11.9917	1.0789	97.68	1.9898
10:06:38	150.32	2193.53	12.0250	1.0801	97.45	1.9888
10:08:38	150.32	2193.05	12.0583	1.0813	97.93	1.9909
10:09:08	150.48	2192.82	12.0667	1.0816	98.16	1.9919
10:09:38	150.32	2191.69	12.0750	1.0819	99.29	1.9969
10:11:38	150.32	2193.16	12.1083	1.0831	97.82	1.9904
10:13:38	150.32	2193.82	12.1417	1.0843	97.16	1.9875
10:14:38	150.17	2193.09	12.1583	1.0849	97.89	1.9907
10:18:38	150.32	2193.44	12.2250	1.0872	97.54	1.9892
10:20:38	150.32	2192.44	12.2583	1.0884	98.54	1.9936
10:24:38	150.32	2193.11	12.3250	1.0908	97.87	1.9907
10:26:38	150.32	2193.30	12.3583	1.0920	97.68	1.9898
10:27:38	150.32	2192.51	12.3750	1.0925	98.47	1.9933
10:29:38	150.32	2193.28	12.4083	1.0937	97.70	1.9899
10:31:38	150.32	2192.74	12.4417	1.0949	98.24	1.9923
10:33:38	150.48	2192.84	12.4750	1.0960	98.14	1.9918
10:34:38	150.32	2193.35	12.4917	1.0966	97.63	1.9896
10:38:38	150.32	2192.63	12.5583	1.0989	98.35	1.9928
10:39:08	150.48	2192.96	12.5667	1.0992	98.02	1.9913
10:43:08	150.32	2192.35	12.6333	1.1015	98.63	1.9940
10:45:08	150.32	2192.84	12.6667	1.1027	98.14	1.9918
10:46:08	150.32	2193.32	12.6833	1.1032	97.66	1.9897
10:48:08	150.32	2192.72	12.7167	1.1044	98.26	1.9924
10:49:08	150.48	2193.10	12.7333	1.1049	97.88	1.9907
10:50:08	150.48	2192.02	12.7500	1.1055	98.96	1.9955
10:51:08	150.32	2192.60	12.7667	1.1061	98.38	1.9929
10:53:08	150.48	2191.89	12.8000	1.1072	99.09	1.9960
10:53:38	150.48	2191.58	12.8083	1.1075	99.40	1.9974
10:55:38	150.32	2192.60	12.8417	1.1086	98.38	1.9929
10:59:38	150.32	2192.86	12.9083	1.1109	98.12	1.9918
11:03:38	150.32	2192.28	12.9750	1.1131	98.70	1.9943
11:05:38	150.32	2192.76	13.0083	1.1142	98.22	1.9922
11:13:38	150.48	2192.21	13.1417	1.1187	98.77	1.9946
11:17:38	150.48	2192.35	13.2083	1.1208	98.63	1.9940
11:18:38	150.48	2192.05	13.2250	1.1214	98.93	1.9953

TIME 03-MAR-84	SDT degF	SDP psia	t-t0 HR	L(t-t0)	P-P0 psia	L(P-P0)
11:22:38	150.32	2192.20	13.2917	1.1236	98.78	1.9947
11:23:38	150.48	2192.00	13.3083	1.1241	98.98	1.9956
11:24:38	150.32	2192.51	13.3250	1.1247	98.47	1.9933
11:28:38	150.48	2191.77	13.3917	1.1268	99.21	1.9965
11:36:38	150.48	2192.07	13.5250	1.1311	98.91	1.9952
11:37:38	150.48	2192.02	13.5417	1.1317	98.96	1.9955
11:38:38	150.63	2191.35	13.5583	1.1322	99.63	1.9984
11:40:38	150.48	2192.02	13.5917	1.1333	98.96	1.9955
11:44:38	150.48	2192.00	13.6583	1.1354	98.98	1.9956
11:45:38	150.48	2191.65	13.6750	1.1359	99.33	1.9971
11:47:38	150.48	2192.26	13.7083	1.1370	98.72	1.9944
11:49:38	150.48	2191.67	13.7417	1.1380	99.31	1.9970
11:51:38	150.48	2192.02	13.7750	1.1391	98.96	1.9955
11:53:38	150.48	2191.33	13.8083	1.1401	99.65	1.9985
11:54:38	150.48	2191.18	13.8250	1.1407	99.80	1.9991
11:56:38	150.48	2191.91	13.8583	1.1417	99.07	1.9959
11:58:38	150.48	2191.21	13.8917	1.1428	99.77	1.9990
11:59:38	150.48	2190.81	13.9083	1.1433	100.17	2.0007
12:03:38	150.48	2191.42	13.9750	1.1454	99.56	1.9981
12:04:08	150.48	2191.86	13.9833	1.1456	99.12	1.9962
12:06:08	150.48	2191.30	14.0167	1.1466	99.68	1.9986
12:10:08	150.63	2191.94	14.0833	1.1487	99.04	1.9958
12:14:08	150.63	2191.43	14.1500	1.1508	99.55	1.9980
12:16:08	150.48	2191.58	14.1833	1.1518	99.40	1.9974
12:17:08	150.63	2190.59	14.2000	1.1523	100.39	2.0017
12:17:38	150.63	2187.74	14.2083	1.1525	103.24	2.0138
12:18:08	150.48	2189.34	14.2167	1.1528	101.64	2.0071
12:19:08	150.63	2191.26	14.2333	1.1533	99.72	1.9988
12:23:08	150.63	2192.71	14.3000	1.1553	98.27	1.9924
12:23:38	150.63	2192.48	14.3083	1.1556	98.50	1.9934
12:25:38	150.63	2192.68	14.3417	1.1566	98.30	1.9926
12:26:38	150.63	2192.99	14.3583	1.1571	97.99	1.9912
12:28:38	150.63	2192.62	14.3917	1.1581	98.36	1.9928
12:29:38	150.48	2193.01	14.4083	1.1586	97.97	1.9911
12:30:38	150.63	2194.46	14.4250	1.1591	96.52	1.9846
12:31:08	150.48	2189.88	14.4333	1.1594	101.10	2.0047
12:31:38	150.48	2186.65	14.4417	1.1596	104.33	2.0184
12:32:38	150.48	2183.13	14.4583	1.1601	107.85	2.0328
12:33:38	150.63	2180.47	14.4750	1.1606	110.51	2.0434
12:34:08	150.48	2179.73	14.4833	1.1609	111.25	2.0463
12:34:38	150.32	2178.27	14.4917	1.1611	112.71	2.0520
12:35:38	150.48	2171.39	14.5083	1.1616	119.59	2.0777
12:36:08	150.48	2164.81	14.5167	1.1619	126.17	2.1010
12:36:38	150.48	2160.21	14.5250	1.1621	130.77	2.1165
12:37:38	150.48	2154.79	14.5417	1.1626	136.19	2.1342
12:39:38	150.48	2152.08	14.5750	1.1636	138.90	2.1427
12:40:08	150.63	2146.91	14.5833	1.1639	144.07	2.1586
12:40:38	150.63	2144.30	14.5917	1.1641	146.68	2.1664
12:41:38	150.63	2141.58	14.6083	1.1646	149.40	2.1744
12:42:38	150.63	2140.11	14.6250	1.1651	150.87	2.1786
12:50:38	150.78	2138.58	14.7583	1.1690	152.40	2.1830
12:51:38	150.78	2139.52	14.7750	1.1695	151.46	2.1803
12:52:08	150.93	2139.61	14.7833	1.1698	151.37	2.1800
12:53:08	150.78	2138.51	14.8000	1.1703	152.47	2.1832
12:55:08	150.78	2139.16	14.8333	1.1712	151.82	2.1813
12:59:08	150.93	2139.07	14.9000	1.1732	151.91	2.1816
13:01:08	150.78	2138.75	14.9333	1.1742	152.23	2.1825
13:02:08	150.78	2139.09	14.9500	1.1746	151.89	2.1815
13:04:08	150.93	2138.38	14.9833	1.1756	152.60	2.1835
13:06:08	150.78	2139.54	15.0167	1.1766	151.44	2.1802
13:06:38	150.93	2139.45	15.0250	1.1768	151.53	2.1805
13:07:08	150.93	2138.65	15.0333	1.1771	152.33	2.1828

36/64"ADJ.CHOKE

36/64"FIX.CHOKE

TIME 03-MAR-84	SDT degF	SDP psia	t-t0 HR	L(t-t0)	P-P0 psia	L(P-P0)	
13:08:08	151.09	2138.29	15.0500	1.1775	152.69	2.1838	
13:10:08	150.78	2139.52	15.0833	1.1785	151.46	2.1803	
13:11:08	150.93	2138.82	15.1000	1.1790	152.16	2.1823	
13:12:08	150.93	2139.45	15.1167	1.1795	151.53	2.1805	
13:14:08	150.78	2139.35	15.1500	1.1804	151.63	2.1808	
13:14:38	150.93	2139.52	15.1583	1.1807	151.46	2.1803	
13:15:08	150.93	2141.29	15.1667	1.1809	149.69	2.1752	
13:15:38	150.93	2151.73	15.1750	1.1811	139.25	2.1438	32/64"ADJ.CHOKE
13:16:08	150.93	2158.89	15.1833	1.1814	132.09	2.1209	
13:16:38	150.93	2164.80	15.1917	1.1816	126.18	2.1010	
13:17:08	150.93	2168.66	15.2000	1.1818	122.32	2.0875	
13:18:08	150.93	2173.00	15.2167	1.1823	117.98	2.0718	
13:19:08	151.09	2176.04	15.2333	1.1828	114.94	2.0605	
13:20:08	150.93	2177.74	15.2500	1.1833	113.24	2.0540	
13:22:08	151.09	2179.37	15.2833	1.1842	111.61	2.0477	
13:26:08	150.93	2180.84	15.3500	1.1861	110.14	2.0419	
13:28:08	150.93	2180.95	15.3833	1.1871	110.03	2.0415	
13:29:08	150.93	2181.37	15.4000	1.1875	109.61	2.0399	
13:29:38	150.93	2181.31	15.4083	1.1878	109.67	2.0401	
13:30:08	150.93	2175.68	15.4167	1.1880	115.30	2.0618	32/64"FIX.CHOKE
13:30:38	150.78	2175.28	15.4250	1.1882	115.70	2.0633	
13:31:08	150.78	2173.78	15.4333	1.1885	117.20	2.0689	
13:33:08	150.93	2171.71	15.4667	1.1894	119.27	2.0765	
13:37:08	150.93	2170.90	15.5333	1.1913	120.08	2.0795	
13:45:08	150.93	2170.69	15.6667	1.1950	120.29	2.0802	36/64"ADJ.CHOKE
13:46:08	150.78	2170.91	15.6833	1.1954	120.07	2.0794	
13:46:38	150.78	2171.05	15.6917	1.1957	119.93	2.0789	
13:47:08	150.78	2159.76	15.7000	1.1959	131.22	2.1180	
13:48:08	150.78	2154.94	15.7167	1.1964	136.04	2.1337	
13:49:08	150.78	2151.89	15.7333	1.1968	139.09	2.1433	
13:50:08	150.93	2149.68	15.7500	1.1973	141.30	2.1501	
13:50:38	150.78	2148.53	15.7583	1.1975	142.45	2.1537	
13:51:38	150.78	2147.57	15.7750	1.1980	143.41	2.1566	
13:52:38	150.78	2147.62	15.7917	1.1984	143.36	2.1564	
13:53:08	150.78	2147.41	15.8000	1.1987	143.57	2.1571	
13:54:08	151.09	2145.99	15.8167	1.1991	144.99	2.1613	
13:54:38	150.78	2145.51	15.8250	1.1993	145.47	2.1628	
13:55:08	150.93	2137.67	15.8333	1.1996	153.31	2.1856	36/64"FIX.CHOKE
13:55:38	150.93	2138.56	15.8417	1.1998	152.42	2.1830	
13:59:38	150.93	2138.09	15.9083	1.2016	152.89	2.1844	
14:01:38	150.93	2138.42	15.9417	1.2025	152.56	2.1834	
14:02:38	150.93	2138.87	15.9583	1.2030	152.11	2.1821	
14:06:38	150.93	2138.63	16.0250	1.2048	152.35	2.1828	
14:10:38	151.09	2139.01	16.0917	1.2066	151.97	2.1818	
14:11:38	150.93	2139.28	16.1083	1.2071	151.70	2.1810	
14:15:38	150.93	2138.17	16.1750	1.2088	152.81	2.1841	
14:16:38	151.09	2138.40	16.1917	1.2093	152.58	2.1835	
14:17:38	150.93	2139.47	16.2083	1.2097	151.51	2.1804	
14:18:38	150.93	2138.52	16.2250	1.2102	152.46	2.1831	
14:22:38	151.09	2138.76	16.2917	1.2120	152.22	2.1825	
14:24:38	151.09	2139.60	16.3250	1.2129	151.38	2.1801	
14:25:08	151.09	2139.97	16.3333	1.2131	151.01	2.1790	
14:26:08	151.09	2139.01	16.3500	1.2135	151.97	2.1818	
14:34:08	151.09	2139.66	16.4833	1.2170	151.32	2.1799	
15:06:08	151.09	2139.92	17.0167	1.2309	151.06	2.1792	
15:22:08	151.24	2139.81	17.2833	1.2376	151.17	2.1795	
15:38:08	151.39	2138.12	17.5500	1.2443	152.86	2.1843	
15:46:08	151.24	2137.13	17.6833	1.2476	153.85	2.1871	
15:48:08	151.24	2137.17	17.7167	1.2484	153.81	2.1870	
15:52:08	151.24	2136.31	17.7833	1.2500	154.67	2.1894	
16:24:08	151.24	2133.98	18.3167	1.2628	157.00	2.1959	
16:56:08	151.09	2130.52	18.8500	1.2753	160.46	2.2054	

TIME 03-MAR-84	SDT degF	SDP psia	t-t0 HR	L(t-t0)	P-P0 psia	L(P-P0)
17:12:08	151.24	2129.28	19.1167	1.2814	161.70	2.2087
17:14:08	151.24	2128.74	19.1500	1.2822	162.24	2.2102
17:15:08	151.24	2129.12	19.1667	1.2825	161.86	2.2091
17:23:08	151.24	2127.90	19.3000	1.2856	163.08	2.2124
17:31:08	151.24	2127.53	19.4333	1.2885	163.45	2.2134
17:33:08	151.24	2126.88	19.4667	1.2893	164.10	2.2151
18:05:08	151.24	2124.29	20.0000	1.3010	166.69	2.2219
18:37:08	151.24	2122.30	20.5333	1.3125	168.68	2.2271
19:41:08	151.09	2120.24	21.6000	1.3345	170.74	2.2323
20:13:08	151.09	2120.19	22.1333	1.3450	170.79	2.2325
20:17:08	151.24	2120.27	22.2000	1.3464	170.71	2.2323
20:19:08	151.24	2119.97	22.2333	1.3470	171.01	2.2330
20:35:08	151.24	2120.37	22.5000	1.3522	170.60	2.2320
20:37:08	151.24	2119.92	22.5333	1.3528	171.06	2.2331
20:41:08	151.09	2120.40	22.6000	1.3541	170.58	2.2319
22:49:08	151.09	2121.34	24.7333	1.3933	169.64	2.2295
23:05:08	151.24	2121.70	25.0000	1.3979	169.28	2.2286
23:09:08	151.24	2121.53	25.0667	1.3991	169.45	2.2290
23:10:08	151.24	2122.05	25.0833	1.3994	168.93	2.2277
23:14:08	151.09	2121.67	25.1500	1.4005	169.31	2.2287
23:30:08	151.24	2121.69	25.4167	1.4051	169.29	2.2286
23:46:08	151.24	2122.35	25.6833	1.4097	168.63	2.2269
23:54:08	151.09	2122.44	25.8167	1.4119	168.54	2.2267
23:58:08	151.24	2122.32	25.8833	1.4130	168.66	2.2270
00:02:08	151.24	2122.86	25.9500	1.4141	168.12	2.2256
00:18:08	151.24	2122.88	26.2167	1.4186	168.10	2.2256
00:34:08	151.24	2123.58	26.4833	1.4230	167.40	2.2238
00:42:08	151.24	2123.63	26.6167	1.4252	167.35	2.2236
00:46:08	151.24	2123.80	26.6833	1.4262	167.18	2.2232
00:48:08	151.24	2123.72	26.7167	1.4268	167.26	2.2234
00:49:08	151.09	2124.05	26.7333	1.4271	166.93	2.2225
00:50:08	151.24	2123.65	26.7500	1.4273	167.33	2.2236
00:51:08	151.24	2124.05	26.7667	1.4276	166.93	2.2225
01:23:08	151.24	2124.66	27.3000	1.4362	166.32	2.2209
01:31:08	151.24	2125.22	27.4333	1.4383	165.76	2.2195
01:35:08	151.24	2125.01	27.5000	1.4393	165.97	2.2200
01:36:08	151.39	2124.80	27.5167	1.4396	166.18	2.2206
01:37:08	151.24	2125.24	27.5333	1.4399	165.74	2.2194
02:09:08	151.24	2125.85	28.0667	1.4482	165.13	2.2178
02:17:08	151.24	2125.78	28.2000	1.4502	165.20	2.2180
03:21:08	151.24	2127.65	29.2667	1.4664	163.33	2.2131
03:53:08	151.39	2127.80	29.8000	1.4742	163.18	2.2127
04:57:08	151.24	2129.87	30.8667	1.4895	161.11	2.2071
06:01:08	151.39	2131.36	31.9333	1.5042	159.62	2.2031
06:33:08	151.39	2132.07	32.4667	1.5114	158.91	2.2011
06:41:08	151.24	2132.27	32.6000	1.5132	158.71	2.2006
06:42:08	151.39	2131.93	32.6167	1.5134	159.05	2.2015
06:58:08	151.24	2132.44	32.8833	1.5170	158.54	2.2001
07:00:08	151.24	2132.71	32.9167	1.5174	158.27	2.1994
07:01:08	151.39	2132.30	32.9333	1.5176	158.68	2.2005
07:09:08	151.24	2132.88	33.0667	1.5194	158.10	2.1989
07:13:08	151.39	2132.98	33.1333	1.5203	158.00	2.1986
07:13:38	151.24	2132.43	33.1417	1.5204	158.55	2.2002
07:14:38	151.24	2132.71	33.1583	1.5206	158.27	2.1994
07:15:38	151.39	2132.21	33.1750	1.5208	158.77	2.2008
07:17:38	151.24	2132.39	33.2083	1.5212	158.59	2.2003
07:19:38	151.24	2131.25	33.2417	1.5217	159.73	2.2034
07:27:38	151.24	2132.37	33.3750	1.5234	158.61	2.2003
07:43:38	151.24	2132.72	33.6417	1.5269	158.26	2.1994
07:51:38	151.24	2132.83	33.7750	1.5286	158.15	2.1991
07:55:38	151.24	2133.04	33.8417	1.5295	157.94	2.1985
07:56:38	151.24	2132.95	33.8583	1.5297	158.03	2.1987

TIME 04-MAR-84	SDT degF	SDP psia	t-t0 HR	L(t-t0)	P-P0 psia	L(P-P0)
07:57:08	151.24	2133.00	33.8667	1.5298	157.98	2.1986
07:57:38	151.24	2131.34	33.8750	1.5299	159.64	2.2031
07:58:38	151.24	2131.25	33.8917	1.5301	159.73	2.2034
07:59:08	151.24	2131.38	33.9000	1.5302	159.60	2.2030
07:59:38	151.24	2114.69	33.9083	1.5303	176.29	2.2462
08:00:08	151.24	2109.76	33.9167	1.5304	181.22	2.2582
08:00:38	151.39	2107.23	33.9250	1.5305	183.75	2.2642
08:01:08	151.24	2103.99	33.9333	1.5306	186.99	2.2718
08:01:38	151.24	2101.62	33.9417	1.5307	189.36	2.2773
08:02:08	151.24	2099.91	33.9500	1.5308	191.07	2.2812
08:03:08	151.24	2098.14	33.9667	1.5311	192.84	2.2852
08:04:08	151.24	2097.09	33.9833	1.5313	193.89	2.2875
08:06:08	151.39	2096.51	34.0167	1.5317	194.47	2.2888
08:14:08	151.24	2099.35	34.1500	1.5334	191.63	2.2825
08:18:08	151.24	2100.85	34.2167	1.5342	190.13	2.2790
08:20:08	151.24	2100.33	34.2500	1.5347	190.65	2.2802
08:24:08	151.24	2102.11	34.3167	1.5355	188.87	2.2762
08:28:08	151.39	2102.55	34.3833	1.5363	188.43	2.2752
08:44:08	151.39	2101.24	34.6500	1.5397	189.74	2.2782
09:16:08	151.24	2100.89	35.1833	1.5463	190.09	2.2790
09:32:08	151.24	2100.71	35.4500	1.5496	190.27	2.2794
09:40:08	151.24	2100.73	35.5833	1.5512	190.25	2.2793
09:44:08	151.24	2100.52	35.6500	1.5521	190.46	2.2798
10:16:08	151.09	2100.88	36.1833	1.5585	190.10	2.2790
10:32:08	151.09	2101.17	36.4500	1.5617	189.81	2.2783
10:36:08	151.09	2100.68	36.5167	1.5625	190.30	2.2794
11:08:08	151.09	2101.05	37.0500	1.5688	189.93	2.2786
11:24:08	151.09	2101.17	37.3167	1.5719	189.81	2.2783
11:32:08	151.09	2100.88	37.4500	1.5735	190.10	2.2790
11:48:08	151.24	2101.13	37.7167	1.5765	189.85	2.2784
11:56:08	151.09	2101.30	37.8500	1.5781	189.68	2.2780
11:58:08	151.09	2101.31	37.8833	1.5784	189.67	2.2780
11:59:08	151.09	2101.19	37.9000	1.5786	189.79	2.2783
11:59:38	151.24	2100.22	37.9083	1.5787	190.76	2.2805
12:00:08	151.09	2073.00	37.9167	1.5788	217.98	2.3384 44/64"ADJ.CHOKE
12:00:38	151.09	2058.64	37.9250	1.5789	232.34	2.3661
12:01:08	151.09	2047.59	37.9333	1.5790	243.39	2.3863
12:01:38	151.09	2038.62	37.9417	1.5791	252.36	2.4020
12:02:08	151.09	2032.42	37.9500	1.5792	258.56	2.4126
12:02:38	151.09	2027.84	37.9583	1.5793	263.14	2.4202
12:03:08	150.93	2024.79	37.9667	1.5794	266.19	2.4252
12:03:38	151.09	2022.77	37.9750	1.5795	268.21	2.4285
12:04:38	150.93	2020.55	37.9917	1.5797	270.43	2.4320
12:05:38	151.09	2019.85	38.0083	1.5799	271.13	2.4332
12:07:38	150.93	2020.85	38.0417	1.5803	270.13	2.4316
12:11:38	151.09	2025.20	38.1083	1.5810	265.78	2.4245
12:12:38	151.09	2026.29	38.1250	1.5812	264.69	2.4227
12:14:38	151.09	2026.44	38.1583	1.5816	264.54	2.4225
12:15:08	150.93	2018.21	38.1667	1.5817	272.77	2.4358 44/64"FIX.CHOKE
12:16:08	151.09	2015.71	38.1833	1.5819	275.27	2.4398
12:18:08	151.09	2012.33	38.2167	1.5823	278.65	2.4451
12:20:08	150.93	2011.13	38.2500	1.5826	279.85	2.4469
12:24:08	150.93	2011.04	38.3167	1.5834	279.94	2.4471
12:26:08	150.93	2011.50	38.3500	1.5838	279.48	2.4464
12:28:08	150.78	2011.31	38.3833	1.5841	279.67	2.4466
12:32:08	150.93	2012.32	38.4500	1.5849	278.66	2.4451
12:36:08	150.78	2012.38	38.5167	1.5856	278.60	2.4450
12:52:08	150.63	2010.82	38.7833	1.5886	280.16	2.4474
13:24:08	150.78	2010.29	39.3167	1.5946	280.69	2.4482
13:40:08	150.63	2009.81	39.5833	1.5975	281.17	2.4490
13:48:08	150.63	2009.48	39.7167	1.5990	281.50	2.4495
13:50:08	150.63	2009.42	39.7500	1.5993	281.56	2.4496

TIME 04-MAR-84	SDT degF	SDP psia	t-t0 HR	L(t-t0)	P-P0 psia	L(P-P0)	
13:51:08	150.63	2009.53	39.7667	1.5995	281.45	2.4494	
13:51:38	150.63	2010.21	39.7750	1.5996	280.77	2.4483	
13:59:38	150.63	2009.21	39.9083	1.6011	281.77	2.4499	
15:03:38	150.48	2008.52	40.9750	1.6125	282.46	2.4510	
15:35:38	150.48	2008.29	41.5083	1.6181	282.69	2.4513	
15:51:38	150.32	2008.28	41.7750	1.6209	282.70	2.4513	
15:59:38	150.32	2008.00	41.9083	1.6223	282.98	2.4518	
16:15:38	150.32	2008.73	42.1750	1.6251	282.25	2.4506	
16:23:38	150.32	2008.58	42.3083	1.6264	282.40	2.4509	
16:27:38	150.32	2008.38	42.3750	1.6271	282.60	2.4512	
16:28:38	150.32	2008.44	42.3917	1.6273	282.54	2.4511	
16:29:08	150.32	2008.56	42.4000	1.6274	282.42	2.4509	
16:29:38	150.32	2006.93	42.4083	1.6275	284.05	2.4534	
16:30:08	150.48	1997.82	42.4167	1.6275	293.16	2.4671	48/64"ADJ. CHOKE
16:31:08	150.48	2001.80	42.4333	1.6277	289.18	2.4612	
16:33:08	150.32	2006.27	42.4667	1.6280	284.71	2.4544	
16:35:08	150.17	2008.75	42.5000	1.6284	282.23	2.4506	
16:39:08	150.32	2009.99	42.5667	1.6291	280.99	2.4487	
16:43:08	150.32	2010.15	42.6333	1.6297	280.83	2.4484	
16:44:08	150.32	2010.36	42.6500	1.6299	280.62	2.4481	
16:44:38	150.32	2008.80	42.6583	1.6300	282.18	2.4505	
16:45:08	150.32	1994.15	42.6667	1.6301	296.83	2.4725	48/64"FIX. CHOKE
16:45:38	150.32	1987.94	42.6750	1.6302	303.04	2.4815	
16:46:08	150.32	1983.27	42.6833	1.6303	307.71	2.4881	
16:46:38	150.17	1979.41	42.6917	1.6303	311.57	2.4936	
16:47:08	150.48	1976.49	42.7000	1.6304	314.49	2.4976	
16:48:08	150.32	1972.66	42.7167	1.6306	318.32	2.5029	
16:49:08	150.17	1970.46	42.7333	1.6308	320.52	2.5059	
16:50:08	150.17	1969.43	42.7500	1.6309	321.55	2.5072	
16:52:08	150.17	1969.33	42.7833	1.6313	321.65	2.5074	
16:56:08	150.17	1970.95	42.8500	1.6320	320.03	2.5052	
17:00:08	150.17	1973.57	42.9167	1.6326	317.41	2.5016	
17:04:08	150.17	1974.87	42.9833	1.6333	316.11	2.4998	
17:36:08	150.02	1975.52	43.5167	1.6387	315.46	2.4989	
18:08:08	150.02	1975.24	44.0500	1.6439	315.74	2.4993	
18:24:08	150.02	1975.54	44.3167	1.6466	315.44	2.4989	
18:32:08	150.02	1976.11	44.4500	1.6479	314.87	2.4981	
19:36:08	149.71	1976.14	45.5167	1.6582	314.84	2.4981	
20:08:08	150.02	1976.03	46.0500	1.6632	314.95	2.4982	
20:24:08	149.87	1976.43	46.3167	1.6657	314.55	2.4977	
20:40:08	149.87	1976.17	46.5833	1.6682	314.81	2.4980	
20:48:08	149.87	1976.68	46.7167	1.6695	314.30	2.4973	
21:04:08	149.71	1976.45	46.9833	1.6719	314.53	2.4977	
21:12:08	149.87	1976.78	47.1167	1.6732	314.20	2.4972	
21:14:08	149.87	1976.76	47.1500	1.6735	314.22	2.4972	
21:14:38	149.87	1975.66	47.1583	1.6736	315.32	2.4987	
21:15:08	149.87	1957.69	47.1667	1.6736	333.29	2.5228	52/64"ADJ. CHOKE
21:15:38	149.87	1946.59	47.1750	1.6737	344.39	2.5371	
21:16:08	149.71	1938.18	47.1833	1.6738	352.80	2.5475	
21:16:38	149.71	1931.47	47.1917	1.6739	359.51	2.5557	
21:17:08	149.71	1926.43	47.2000	1.6739	364.55	2.5618	
21:17:38	149.71	1922.75	47.2083	1.6740	368.23	2.5661	
21:18:08	149.87	1920.14	47.2167	1.6741	370.84	2.5692	
21:18:38	149.71	1918.24	47.2250	1.6742	372.74	2.5714	
21:19:38	149.71	1915.81	47.2417	1.6743	375.17	2.5742	
21:20:38	149.56	1914.45	47.2583	1.6745	376.53	2.5758	
21:22:38	149.56	1913.48	47.2917	1.6748	377.50	2.5769	
21:23:38	149.41	1913.44	47.3083	1.6749	377.54	2.5770	
21:24:38	149.56	1914.08	47.3250	1.6751	376.90	2.5762	
21:26:38	149.56	1916.65	47.3583	1.6754	374.33	2.5733	
21:28:38	149.41	1918.21	47.3917	1.6757	372.77	2.5714	
21:29:08	149.56	1918.34	47.4000	1.6758	372.64	2.5713	

TIME 04-MAR-84	SDT degF	SDP psia	t-t0 HR	L(t-t0)	P-P0 psia	L(P-P0)	
21:29:38	149.41	1917.70	47.4083	1.6759	373.28	2.5720	
21:30:08	149.41	1915.66	47.4167	1.6759	375.32	2.5744	52/64"FIX.CHOKE
21:30:38	149.41	1919.10	47.4250	1.6760	371.88	2.5704	
21:31:38	149.56	1923.89	47.4417	1.6762	367.09	2.5648	
21:32:38	149.41	1927.04	47.4583	1.6763	363.94	2.5610	
21:33:38	149.56	1928.90	47.4750	1.6765	362.08	2.5588	
21:35:38	149.56	1930.79	47.5083	1.6768	360.19	2.5565	
21:39:38	149.56	1931.26	47.5750	1.6774	359.72	2.5560	
21:47:38	149.41	1930.31	47.7083	1.6786	360.67	2.5571	
22:03:38	149.41	1930.62	47.9750	1.6810	360.36	2.5567	
22:19:38	149.41	1930.31	48.2417	1.6834	360.67	2.5571	
22:35:38	149.41	1930.62	48.5083	1.6858	360.36	2.5567	
22:43:38	149.26	1930.29	48.6417	1.6870	360.69	2.5571	
22:51:38	149.41	1930.69	48.7750	1.6882	360.29	2.5567	
22:55:38	149.41	1930.69	48.8417	1.6888	360.29	2.5567	
22:57:38	149.26	1930.68	48.8750	1.6891	360.30	2.5567	
22:58:38	149.41	1930.76	48.8917	1.6892	360.22	2.5566	
22:59:08	149.26	1930.75	48.9000	1.6893	360.23	2.5566	
22:59:38	149.41	1929.66	48.9083	1.6894	361.32	2.5579	
23:00:08	149.41	1929.38	48.9167	1.6895	361.60	2.5582	52/64"ADJ.CHOKE
23:00:38	149.26	1970.26	48.9250	1.6895	320.72	2.5061	
23:01:08	149.41	2044.36	48.9333	1.6896	246.62	2.3920	BEAN DOWN TO
23:01:38	149.41	2104.21	48.9417	1.6897	186.77	2.2713	24/64"ADJ.CHOKE
23:02:08	149.41	2147.24	48.9500	1.6898	143.74	2.1576	
23:02:38	149.41	2177.63	48.9583	1.6898	113.35	2.0544	
23:03:08	149.71	2199.21	48.9667	1.6899	91.77	1.9627	
23:03:38	149.56	2213.99	48.9750	1.6900	76.99	1.8865	
23:04:08	149.87	2223.84	48.9833	1.6900	67.14	1.8270	
23:04:38	149.87	2230.49	48.9917	1.6901	60.49	1.7817	
23:05:08	149.87	2234.69	49.0000	1.6902	56.29	1.7504	
23:05:38	150.02	2237.45	49.0083	1.6903	53.53	1.7286	
23:07:38	150.32	2241.19	49.0417	1.6906	49.79	1.6972	
23:08:38	150.17	2241.46	49.0583	1.6907	49.52	1.6948	
23:09:08	150.32	2241.14	49.0667	1.6908	49.84	1.6976	
23:10:08	150.48	2241.36	49.0833	1.6909	49.62	1.6957	
23:12:08	150.48	2240.47	49.1167	1.6912	50.51	1.7034	
23:13:08	150.63	2239.60	49.1333	1.6914	51.38	1.7108	
23:13:38	150.78	2239.23	49.1417	1.6914	51.75	1.7139	
23:14:38	150.78	2239.25	49.1583	1.6916	51.73	1.7137	
23:16:38	150.78	2241.31	49.1917	1.6919	49.67	1.6961	24/64"FIX.CHOKE
23:17:38	150.78	2241.82	49.2083	1.6920	49.16	1.6916	
23:18:38	150.93	2241.59	49.2250	1.6922	49.39	1.6936	
23:19:38	150.93	2240.70	49.2417	1.6923	50.28	1.7014	
23:21:38	151.09	2240.60	49.2750	1.6926	50.38	1.7022	
23:22:08	150.93	2238.76	49.2833	1.6927	52.22	1.7179	
23:22:38	150.93	2235.48	49.2917	1.6928	55.50	1.7443	
23:23:08	150.93	2233.26	49.3000	1.6928	57.72	1.7613	
23:24:08	151.09	2232.36	49.3167	1.6930	58.62	1.7680	
23:24:38	151.09	2234.69	49.3250	1.6931	56.29	1.7504	
23:25:08	150.93	2238.04	49.3333	1.6931	52.94	1.7238	
23:25:38	151.09	2239.08	49.3417	1.6932	51.90	1.7151	
23:26:08	151.09	2237.95	49.3500	1.6933	53.03	1.7246	
23:26:38	151.09	2229.83	49.3583	1.6934	61.15	1.7864	
23:27:08	151.09	2218.87	49.3667	1.6934	72.11	1.8580	
23:27:38	151.09	2210.88	49.3750	1.6935	80.10	1.9037	
23:28:08	151.09	2207.39	49.3833	1.6936	83.59	1.9221	
23:28:38	151.09	2214.50	49.3917	1.6937	76.48	1.8836	
23:29:08	151.09	2229.28	49.4000	1.6937	61.70	1.7903	
23:29:38	151.24	2236.10	49.4083	1.6938	54.88	1.7394	
23:30:08	151.24	2223.87	49.4167	1.6939	67.11	1.8268	
23:30:38	150.93	2219.37	49.4250	1.6939	71.61	1.8550	
23:31:08	151.09	2231.26	49.4333	1.6940	59.72	1.7761	

TIME 04-MAR-84	SDT degF	SDP psia	t-t0 HR	L(t-t0)	P-P0 psia	L(P-P0)
23:31:38	151.09	2236.51	49.4417	1.6941	54.47	1.7362
23:32:08	151.09	2240.04	49.4500	1.6942	50.94	1.7070
23:32:38	151.09	2241.73	49.4583	1.6942	49.25	1.6924
23:33:08	151.09	2242.32	49.4667	1.6943	48.66	1.6872
23:34:08	151.24	2240.69	49.4833	1.6945	50.29	1.7015
23:34:38	151.09	2240.03	49.4917	1.6945	50.95	1.7072
23:35:38	151.09	2241.32	49.5083	1.6947	49.66	1.6960
23:36:08	151.09	2242.30	49.5167	1.6948	48.68	1.6873
23:36:38	151.24	2241.34	49.5250	1.6948	49.64	1.6959
23:37:08	151.24	2238.47	49.5333	1.6949	52.51	1.7203
23:37:38	151.24	2236.98	49.5417	1.6950	54.00	1.7324
23:38:38	151.24	2235.98	49.5583	1.6951	55.00	1.7404
23:39:08	151.24	2235.23	49.5667	1.6952	55.75	1.7463
23:41:08	151.24	2234.32	49.6000	1.6955	56.66	1.7533
23:43:08	151.24	2234.39	49.6333	1.6958	56.59	1.7527
23:45:08	151.24	2233.88	49.6667	1.6961	57.10	1.7566
23:49:08	151.24	2234.39	49.7333	1.6966	56.59	1.7527
23:50:08	151.24	2233.65	49.7500	1.6968	57.33	1.7583
23:51:08	151.24	2233.99	49.7667	1.6969	56.99	1.7558
23:52:08	151.24	2233.51	49.7833	1.6971	57.47	1.7594
23:52:38	151.24	2234.07	49.7917	1.6972	56.91	1.7552
23:54:38	151.24	2233.76	49.8250	1.6974	57.22	1.7576
23:55:08	151.24	2233.23	49.8333	1.6975	57.75	1.7615
23:56:08	151.39	2233.74	49.8500	1.6977	57.24	1.7577
23:57:08	151.24	2233.08	49.8667	1.6978	57.90	1.7627
23:57:38	151.24	2232.62	49.8750	1.6979	58.36	1.7661
23:58:38	151.24	2232.48	49.8917	1.6980	58.50	1.7671
23:59:08	151.09	2231.93	49.9000	1.6981	59.05	1.7712
00:00:08	151.24	2232.76	49.9167	1.6982	58.22	1.7651
00:01:08	151.39	2232.35	49.9333	1.6984	58.63	1.7681
00:05:08	151.24	2232.78	50.0000	1.6990	58.20	1.7649
00:06:08	151.24	2232.34	50.0167	1.6991	58.64	1.7682
00:10:08	151.24	2232.18	50.0833	1.6997	58.80	1.7693
00:11:08	151.39	2232.39	50.1000	1.6998	58.59	1.7678
00:12:08	151.39	2231.69	50.1167	1.7000	59.29	1.7730
00:14:08	151.24	2231.92	50.1500	1.7003	59.06	1.7713
00:16:08	151.24	2231.45	50.1833	1.7006	59.53	1.7747
00:18:08	151.24	2231.61	50.2167	1.7008	59.37	1.7736
00:20:08	151.39	2230.74	50.2500	1.7011	60.24	1.7798
00:22:08	151.39	2230.81	50.2833	1.7014	60.17	1.7793
00:22:38	151.24	2230.47	50.2917	1.7015	60.51	1.7818
00:26:38	151.39	2231.11	50.3583	1.7021	59.87	1.7772
00:27:38	151.39	2231.08	50.3750	1.7022	59.90	1.7775
00:28:08	151.39	2230.97	50.3833	1.7023	60.01	1.7782
00:28:38	151.39	2230.27	50.3917	1.7024	60.71	1.7832
00:29:38	151.39	2230.62	50.4083	1.7025	60.36	1.7807
00:33:38	151.39	2230.08	50.4750	1.7031	60.90	1.7846
00:35:38	151.39	2229.85	50.5083	1.7034	61.13	1.7862
00:36:08	151.39	2229.26	50.5167	1.7034	61.72	1.7904
00:37:08	151.39	2230.11	50.5333	1.7036	60.87	1.7844
00:39:08	151.39	2229.17	50.5667	1.7039	61.81	1.7911
00:43:08	151.39	2229.33	50.6333	1.7044	61.65	1.7900
00:47:08	151.39	2228.78	50.7000	1.7050	62.20	1.7938
00:49:08	151.39	2228.21	50.7333	1.7053	62.77	1.7978
00:49:38	151.39	2227.91	50.7417	1.7054	63.07	1.7998
00:50:08	151.39	2228.40	50.7500	1.7054	62.58	1.7964
00:54:08	151.39	2228.21	50.8167	1.7060	62.77	1.7978
00:56:08	151.39	2227.95	50.8500	1.7063	63.03	1.7996
00:56:38	151.39	2227.51	50.8583	1.7064	63.47	1.8026
00:57:38	151.39	2228.00	50.8750	1.7065	62.98	1.7992
00:58:38	151.24	2227.27	50.8917	1.7066	63.71	1.8042
00:59:08	151.39	2227.42	50.9000	1.7067	63.56	1.8032

TIME 05-MAR-84	SDT degF	SDP psia	t-t0 HR	L(t-t0)	P-P0 psia	L(P-P0)
00:59:38	151.39	2226.76	50.9083	1.7068	64.22	1.8077
01:00:38	151.39	2227.66	50.9250	1.7069	63.32	1.8015
01:02:38	151.39	2227.51	50.9583	1.7072	63.47	1.8026
01:03:38	151.39	2227.72	50.9750	1.7074	63.26	1.8011
01:04:38	151.39	2227.09	50.9917	1.7075	63.89	1.8055
01:12:38	151.39	2226.49	51.1250	1.7086	64.49	1.8095
01:14:38	151.39	2226.55	51.1583	1.7089	64.43	1.8091
01:15:38	151.39	2226.53	51.1750	1.7091	64.45	1.8092
01:16:08	151.39	2226.86	51.1833	1.7091	64.12	1.8070
01:18:08	151.39	2226.11	51.2167	1.7094	64.87	1.8121
01:22:08	151.39	2226.18	51.2833	1.7100	64.80	1.8116
01:22:38	151.39	2226.23	51.2917	1.7100	64.75	1.8112
01:23:38	151.39	2225.41	51.3083	1.7102	65.57	1.8167
01:24:38	151.39	2226.00	51.3250	1.7103	64.98	1.8128
01:32:38	151.39	2225.60	51.4583	1.7115	65.38	1.8154
01:34:38	151.39	2225.30	51.4917	1.7117	65.68	1.8174
01:35:08	151.39	2224.87	51.5000	1.7118	66.11	1.8203
01:36:08	151.09	2225.38	51.5167	1.7119	65.60	1.8169
01:36:38	151.39	2224.97	51.5250	1.7120	66.01	1.8196
01:37:38	151.39	2225.46	51.5417	1.7122	65.52	1.8164
01:39:38	151.39	2225.25	51.5750	1.7124	65.73	1.8178
01:40:38	151.54	2224.74	51.5917	1.7126	66.24	1.8211
01:44:38	151.39	2225.15	51.6583	1.7131	65.83	1.8185
01:45:38	151.54	2225.16	51.6750	1.7133	65.82	1.8184
01:47:38	151.54	2224.39	51.7083	1.7136	66.59	1.8234
01:48:38	151.39	2225.01	51.7250	1.7137	65.97	1.8194
01:49:38	151.39	2224.18	51.7417	1.7138	66.80	1.8248
01:50:38	151.54	2224.77	51.7583	1.7140	66.21	1.8209
01:51:08	151.54	2224.25	51.7667	1.7141	66.73	1.8243
01:51:38	151.54	2224.90	51.7750	1.7141	66.08	1.8201
01:53:38	151.54	2224.20	51.8083	1.7144	66.78	1.8247
01:57:38	151.54	2224.62	51.8750	1.7150	66.36	1.8219
01:58:08	151.39	2224.18	51.8833	1.7150	66.80	1.8248
01:59:08	151.54	2224.48	51.9000	1.7152	66.50	1.8228
01:59:38	151.39	2224.20	51.9083	1.7152	66.78	1.8246
02:00:08	151.39	2227.05	51.9167	1.7153	63.93	1.8057
02:00:38	151.54	2233.75	51.9250	1.7154	57.23	1.7576
02:01:08	151.39	2237.48	51.9333	1.7154	53.50	1.7283
02:01:38	151.54	2240.38	51.9417	1.7155	50.60	1.7041
02:02:08	151.54	2241.80	51.9500	1.7156	49.18	1.6918
02:03:08	151.39	2243.19	51.9667	1.7157	47.79	1.6794
02:05:08	151.54	2244.06	52.0000	1.7160	46.92	1.6714
02:09:08	151.54	2244.25	52.0667	1.7166	46.73	1.6696
02:13:08	151.54	2243.67	52.1333	1.7171	47.31	1.6749
02:15:08	151.54	2243.36	52.1667	1.7174	47.62	1.6778
02:16:08	151.54	2243.58	52.1833	1.7175	47.40	1.6757
02:17:08	151.54	2243.08	52.2000	1.7177	47.90	1.6804
02:17:38	151.54	2242.46	52.2083	1.7177	48.52	1.6859
02:18:38	151.54	2243.23	52.2250	1.7179	47.75	1.6789
02:20:38	151.54	2243.39	52.2583	1.7182	47.59	1.6775
02:21:38	151.54	2243.18	52.2750	1.7183	47.80	1.6794
02:22:08	151.54	2242.69	52.2833	1.7184	48.29	1.6839
02:26:08	151.54	2243.25	52.3500	1.7189	47.73	1.6788
02:26:38	151.39	2242.78	52.3583	1.7190	48.20	1.6830
02:27:38	151.54	2243.29	52.3750	1.7191	47.69	1.6785
02:28:38	151.54	2242.83	52.3917	1.7193	48.15	1.6826
02:29:08	151.54	2242.50	52.4000	1.7193	48.48	1.6856
02:29:38	151.39	2239.67	52.4083	1.7194	51.31	1.7102
02:30:38	151.54	2244.00	52.4250	1.7195	46.98	1.6719
02:31:38	151.54	2245.81	52.4417	1.7197	45.17	1.6549
02:33:38	151.54	2247.12	52.4750	1.7200	43.86	1.6421
02:34:38	151.39	2247.53	52.4917	1.7201	43.45	1.6380

20/64"ADJ.CHOKE

20/64"FIX.CHOKE

TIME 05-MAR-84	SDT degF	SDP psia	t-t0 HR	L(t-t0)	P-P0 psia	L(P-P0)
02:35:38	151.54	2246.65	52.5083	1.7202	44.33	1.6467
02:36:38	151.54	2247.07	52.5250	1.7204	43.91	1.6426
02:40:38	151.39	2246.16	52.5917	1.7209	44.82	1.6515
02:42:38	151.54	2245.28	52.6250	1.7212	45.70	1.6599
02:43:38	151.54	2245.25	52.6417	1.7213	45.73	1.6602
02:44:08	151.54	2244.41	52.6500	1.7214	46.57	1.6681
02:44:38	151.54	2244.60	52.6583	1.7215	46.38	1.6663
02:45:38	151.54	2243.95	52.6750	1.7216	47.03	1.6724
02:49:38	151.54	2244.63	52.7417	1.7222	46.35	1.6660
02:50:08	151.54	2245.04	52.7500	1.7222	45.94	1.6622
02:51:08	151.54	2244.18	52.7667	1.7224	46.80	1.6703
02:55:08	151.54	2244.65	52.8333	1.7229	46.33	1.6659
02:55:38	151.54	2244.48	52.8417	1.7230	46.50	1.6675
02:56:08	151.54	2245.02	52.8500	1.7230	45.96	1.6624
02:58:08	151.54	2244.16	52.8833	1.7233	46.82	1.6704
03:02:08	151.54	2244.06	52.9500	1.7239	46.92	1.6714
03:04:08	151.54	2243.97	52.9833	1.7241	47.01	1.6722
03:05:08	151.54	2243.25	53.0000	1.7243	47.73	1.6780
03:09:08	151.54	2243.43	53.0667	1.7248	47.55	1.6772
03:11:08	151.54	2243.50	53.1000	1.7251	47.48	1.6765
03:12:08	151.54	2242.83	53.1167	1.7252	48.15	1.6826
03:14:08	151.54	2243.15	53.1500	1.7255	47.83	1.6797
03:18:08	151.70	2242.53	53.2167	1.7260	48.45	1.6853
03:20:08	151.54	2242.31	53.2500	1.7263	48.67	1.6873
03:21:08	151.70	2242.07	53.2667	1.7265	48.91	1.6894
03:23:08	151.54	2242.39	53.3000	1.7267	48.59	1.6865
03:24:08	151.70	2242.53	53.3167	1.7269	48.45	1.6853
03:24:38	151.54	2242.03	53.3250	1.7269	48.95	1.6898
03:25:38	151.70	2242.65	53.3417	1.7271	48.33	1.6842
03:26:08	151.54	2242.06	53.3500	1.7271	48.92	1.6895
03:27:08	151.70	2242.56	53.3667	1.7273	48.42	1.6850
03:27:38	151.70	2242.84	53.3750	1.7273	48.14	1.6825
03:31:38	151.54	2242.99	53.4417	1.7279	47.99	1.6812
03:32:38	151.54	2242.31	53.4583	1.7280	48.67	1.6873
03:36:38	151.70	2242.44	53.5250	1.7286	48.54	1.6861
03:37:38	151.54	2242.27	53.5417	1.7287	48.71	1.6876
03:38:08	151.54	2241.99	53.5500	1.7288	48.99	1.6901
03:38:38	151.70	2242.48	53.5583	1.7288	48.50	1.6858
03:40:38	151.70	2241.72	53.5917	1.7291	49.26	1.6925
03:44:38	151.70	2242.16	53.6583	1.7296	48.82	1.6886
03:45:38	151.70	2242.25	53.6750	1.7298	48.73	1.6878
03:47:38	151.54	2241.41	53.7083	1.7300	49.57	1.6952
03:49:38	151.54	2241.43	53.7417	1.7303	49.55	1.6950
03:50:38	151.70	2242.04	53.7583	1.7304	48.94	1.6897
03:54:38	151.70	2241.25	53.8250	1.7310	49.73	1.6966
03:58:38	151.70	2241.60	53.8917	1.7315	49.38	1.6935
04:00:38	151.70	2241.25	53.9250	1.7318	49.73	1.6966
04:04:38	151.70	2241.53	53.9917	1.7323	49.45	1.6942
04:05:08	151.70	2241.88	54.0000	1.7324	49.10	1.6911
04:06:08	151.54	2241.59	54.0167	1.7325	49.39	1.6936
04:06:38	151.70	2240.78	54.0250	1.7326	50.20	1.7007
04:08:38	151.70	2241.37	54.0583	1.7329	49.61	1.6955
04:09:08	151.54	2241.41	54.0667	1.7329	49.57	1.6952
04:09:38	151.54	2240.82	54.0750	1.7330	50.16	1.7004
04:10:38	151.70	2241.51	54.0917	1.7331	49.47	1.6943
04:14:38	151.70	2241.27	54.1583	1.7337	49.71	1.6964
04:15:38	151.70	2241.27	54.1750	1.7338	49.71	1.6964
04:16:38	151.70	2240.59	54.1917	1.7339	50.39	1.7024
04:17:38	151.70	2240.73	54.2083	1.7341	50.25	1.7012
04:18:08	151.70	2241.09	54.2167	1.7341	49.89	1.6980
04:20:08	151.70	2240.38	54.2500	1.7344	50.60	1.7042
04:21:08	151.70	2240.48	54.2667	1.7345	50.50	1.7033

TIME 05-MAR-84	SDT degF	SDP psia	t-t0 HR	L(t-t0)	P-P0 psia	L(P-P0)
04:21:38	151.70	2240.27	54.2750	1.7346	50.71	1.7051
04:22:38	151.85	2241.02	54.2917	1.7347	49.96	1.6986
04:23:38	151.70	2240.76	54.3083	1.7349	50.22	1.7009
04:24:08	151.70	2240.36	54.3167	1.7349	50.62	1.7043
04:25:08	151.70	2240.81	54.3333	1.7351	50.17	1.7004
04:25:38	151.70	2241.15	54.3417	1.7351	49.83	1.6975
04:27:38	151.70	2240.60	54.3750	1.7354	50.38	1.7022
04:29:38	151.70	2240.78	54.4083	1.7357	50.20	1.7007
04:30:08	151.70	2240.53	54.4167	1.7357	50.45	1.7028
04:32:08	151.70	2241.22	54.4500	1.7360	49.76	1.6969
04:33:08	151.70	2240.50	54.4667	1.7361	50.48	1.7031
04:35:08	151.70	2240.62	54.5000	1.7364	50.36	1.7021
04:36:08	151.85	2240.74	54.5167	1.7365	50.24	1.7011
04:36:38	151.70	2241.06	54.5250	1.7366	49.92	1.6983
04:37:38	151.70	2240.45	54.5417	1.7367	50.53	1.7036
04:38:38	151.70	2240.80	54.5583	1.7369	50.18	1.7006
04:39:08	151.70	2240.83	54.5667	1.7369	50.15	1.7003
04:39:38	151.70	2240.17	54.5750	1.7370	50.81	1.7060
04:40:08	151.70	2240.60	54.5833	1.7371	50.38	1.7022
04:44:08	151.70	2240.76	54.6500	1.7376	50.22	1.7009
04:46:08	151.70	2240.66	54.6833	1.7379	50.32	1.7018
04:46:38	151.70	2239.83	54.6917	1.7379	51.15	1.7088
04:47:08	151.70	2240.55	54.7000	1.7380	50.43	1.7027
04:51:08	151.70	2241.01	54.7667	1.7385	49.97	1.6987
04:53:08	151.70	2240.36	54.8000	1.7388	50.62	1.7043
04:55:08	151.85	2240.76	54.8333	1.7390	50.22	1.7009
04:56:08	151.70	2240.87	54.8500	1.7392	50.11	1.7000
04:57:08	151.70	2240.39	54.8667	1.7393	50.59	1.7040
04:58:08	151.70	2240.83	54.8833	1.7394	50.15	1.7003
05:00:08	151.70	2240.57	54.9167	1.7397	50.41	1.7025
05:01:08	151.70	2240.69	54.9333	1.7398	50.29	1.7015
05:01:38	151.70	2240.66	54.9417	1.7399	50.32	1.7018
05:02:08	151.85	2241.25	54.9500	1.7400	49.73	1.6966
05:03:08	151.70	2240.69	54.9667	1.7401	50.29	1.7015
05:04:08	151.70	2240.87	54.9833	1.7402	50.11	1.7000
05:04:38	151.85	2240.55	54.9917	1.7403	50.43	1.7027
05:05:08	151.70	2241.20	55.0000	1.7404	49.78	1.6971
05:05:38	151.70	2240.36	55.0083	1.7404	50.62	1.7043
05:07:38	151.70	2240.38	55.0417	1.7407	50.60	1.7042
05:08:38	151.70	2239.87	55.0583	1.7408	51.11	1.7085
05:09:38	151.70	2240.64	55.0750	1.7410	50.34	1.7019
05:11:38	151.70	2240.64	55.1083	1.7412	50.34	1.7019
05:12:08	151.70	2240.66	55.1167	1.7413	50.32	1.7018
05:13:08	151.70	2239.99	55.1333	1.7414	50.99	1.7075
05:15:08	151.85	2240.51	55.1667	1.7417	50.47	1.7030
05:16:08	151.70	2240.22	55.1833	1.7418	50.76	1.7055
05:17:08	151.70	2240.87	55.2000	1.7419	50.11	1.7000
05:21:08	151.70	2240.34	55.2667	1.7425	50.64	1.7045
05:23:08	151.70	2240.34	55.3000	1.7427	50.64	1.7045
05:24:08	151.70	2240.45	55.3167	1.7429	50.53	1.7036
05:24:38	151.70	2239.92	55.3250	1.7429	51.06	1.7081
05:26:38	151.70	2240.36	55.3583	1.7432	50.62	1.7043
05:27:38	151.70	2240.64	55.3750	1.7433	50.34	1.7019
05:31:38	151.85	2240.02	55.4417	1.7438	50.96	1.7072
05:35:38	151.70	2240.34	55.5083	1.7444	50.64	1.7045
05:36:08	151.85	2239.29	55.5167	1.7444	51.69	1.7134
05:37:08	151.70	2240.10	55.5333	1.7446	50.88	1.7066
05:39:08	151.85	2239.83	55.5667	1.7448	51.15	1.7088
05:40:08	151.85	2240.43	55.5833	1.7449	50.55	1.7038
05:44:08	151.85	2240.15	55.6500	1.7455	50.83	1.7062
05:46:08	151.85	2240.28	55.6833	1.7457	50.70	1.7050
05:47:08	151.70	2240.36	55.7000	1.7459	50.62	1.7043

TIME 05-MAR-84	SDT degF	SDP psia	t-t0 HR	L(t-t0)	P-P0 psia	L(P-P0)
05:47:38	151.85	2240.02	55.7083	1.7459	50.96	1.7072
05:49:38	151.85	2240.37	55.7417	1.7462	50.61	1.7042
05:50:08	151.85	2239.93	55.7500	1.7462	51.05	1.7080
05:50:38	151.70	2240.31	55.7583	1.7463	50.67	1.7048
05:51:38	151.85	2240.00	55.7750	1.7464	50.98	1.7074
05:52:08	151.85	2239.50	55.7833	1.7465	51.48	1.7117
05:54:08	151.85	2239.90	55.8167	1.7468	51.08	1.7082
05:55:08	151.85	2240.58	55.8333	1.7469	50.40	1.7024
05:57:08	151.85	2240.00	55.8667	1.7472	50.98	1.7074
05:58:08	151.85	2239.71	55.8833	1.7473	51.27	1.7099
06:00:08	151.85	2240.13	55.9167	1.7475	50.85	1.7063
06:00:38	151.85	2240.39	55.9250	1.7476	50.59	1.7041
06:01:38	151.70	2239.96	55.9417	1.7477	51.02	1.7078
06:02:38	151.85	2240.20	55.9583	1.7479	50.78	1.7057
06:03:08	151.85	2240.34	55.9667	1.7479	50.64	1.7045
06:07:08	151.85	2240.13	56.0333	1.7484	50.85	1.7063
06:09:08	152.00	2240.60	56.0667	1.7487	50.38	1.7023
06:11:08	151.85	2238.31	56.1000	1.7490	52.67	1.7216
06:12:08	151.85	2239.74	56.1167	1.7491	51.24	1.7096
06:16:08	151.85	2240.39	56.1833	1.7496	50.59	1.7041
06:18:08	151.85	2239.43	56.2167	1.7499	51.55	1.7122
06:18:38	151.85	2239.74	56.2250	1.7499	51.24	1.7096
06:19:08	151.85	2239.44	56.2333	1.7500	51.54	1.7121
06:23:08	151.85	2240.37	56.3000	1.7505	50.61	1.7042
06:25:08	151.85	2239.85	56.3333	1.7508	51.13	1.7087
06:25:38	151.85	2239.30	56.3417	1.7508	51.68	1.7133
06:27:38	151.85	2239.95	56.3750	1.7511	51.03	1.7078
06:28:38	151.85	2239.85	56.3917	1.7512	51.13	1.7087
06:29:38	151.85	2240.39	56.4083	1.7513	50.59	1.7041
06:31:38	151.85	2239.69	56.4417	1.7516	51.29	1.7100
06:33:38	151.85	2239.86	56.4750	1.7519	51.11	1.7085
06:34:38	151.85	2239.62	56.4917	1.7520	51.36	1.7106
06:35:38	152.00	2240.04	56.5083	1.7521	50.94	1.7071
06:36:08	151.85	2240.28	56.5167	1.7522	50.70	1.7050
06:36:38	152.00	2239.32	56.5250	1.7522	51.66	1.7132
06:38:38	152.00	2240.02	56.5583	1.7525	50.96	1.7072
06:40:38	151.85	2239.93	56.5917	1.7528	51.05	1.7080
06:41:38	151.85	2239.13	56.6083	1.7529	51.85	1.7147
06:43:38	151.85	2239.66	56.6417	1.7531	51.32	1.7103
06:44:38	152.00	2239.88	56.6583	1.7533	51.10	1.7084
06:45:08	152.00	2239.53	56.6667	1.7533	51.45	1.7114
06:46:08	152.00	2240.25	56.6833	1.7535	50.73	1.7053
06:48:08	152.00	2239.81	56.7167	1.7537	51.17	1.7090
06:50:08	152.00	2240.33	56.7500	1.7540	50.65	1.7046
06:52:08	151.85	2239.69	56.7833	1.7542	51.29	1.7100
06:54:08	152.00	2240.35	56.8167	1.7545	50.63	1.7044
06:56:08	152.00	2240.07	56.8500	1.7547	50.91	1.7068
06:57:08	152.00	2240.32	56.8667	1.7549	50.66	1.7047
06:57:38	152.00	2240.49	56.8750	1.7549	50.49	1.7032
06:58:38	151.85	2239.97	56.8917	1.7550	51.01	1.7077
07:00:38	151.85	2240.25	56.9250	1.7553	50.73	1.7053
07:01:38	151.85	2240.44	56.9417	1.7554	50.54	1.7036
07:02:38	152.15	2239.87	56.9583	1.7556	51.11	1.7085
07:03:08	151.85	2239.46	56.9667	1.7556	51.52	1.7120
07:04:08	152.00	2239.72	56.9833	1.7557	51.26	1.7098
07:04:38	152.00	2240.12	56.9917	1.7558	50.86	1.7064
07:05:08	152.00	2239.23	57.0000	1.7559	51.75	1.7139
07:07:08	151.85	2239.93	57.0333	1.7561	51.05	1.7080
07:08:08	152.00	2240.61	57.0500	1.7563	50.37	1.7021
07:10:08	151.85	2240.20	57.0833	1.7565	50.78	1.7057
07:11:08	152.00	2239.98	57.1000	1.7566	51.00	1.7075
07:11:38	152.00	2240.32	57.1083	1.7567	50.66	1.7047

TIME 05-MAR-84	SDT degF	SDP psia	t-t0 HR	L(t-t0)	P-P0 psia	L(P-P0)
07:12:08	152.00	2239.91	57.1167	1.7568	51.07	1.7081
07:14:08	152.00	2240.23	57.1500	1.7570	50.75	1.7055
07:15:08	152.00	2240.32	57.1667	1.7571	50.66	1.7047
07:16:08	152.00	2239.81	57.1833	1.7573	51.17	1.7090
07:17:08	152.00	2240.12	57.2000	1.7574	50.86	1.7064
07:18:08	152.00	2239.83	57.2167	1.7575	51.15	1.7089
07:18:38	152.00	2240.19	57.2250	1.7576	50.79	1.7058
07:19:38	152.15	2239.75	57.2417	1.7577	51.23	1.7095
07:20:38	152.00	2240.11	57.2583	1.7578	50.87	1.7065
07:21:08	151.85	2240.64	57.2667	1.7579	50.34	1.7020
07:22:08	152.00	2240.35	57.2833	1.7580	50.63	1.7044
07:22:38	152.00	2239.58	57.2917	1.7581	51.40	1.7110
07:24:38	152.00	2240.32	57.3250	1.7583	50.66	1.7047
07:25:38	152.00	2239.42	57.3417	1.7585	51.56	1.7123
07:29:38	152.00	2240.49	57.4083	1.7590	50.49	1.7032
07:33:38	152.15	2239.65	57.4750	1.7595	51.33	1.7104
07:34:38	152.15	2239.37	57.4917	1.7596	51.61	1.7128
07:35:08	152.15	2240.08	57.5000	1.7597	50.90	1.7067
07:37:08	152.15	2240.24	57.5333	1.7599	50.74	1.7053
07:38:08	152.15	2240.66	57.5500	1.7600	50.32	1.7017
07:38:38	152.15	2241.05	57.5583	1.7601	49.93	1.6984
07:39:38	152.00	2240.04	57.5750	1.7602	50.94	1.7071
07:40:08	152.00	2239.46	57.5833	1.7603	51.52	1.7120
07:42:08	152.15	2240.80	57.6167	1.7605	50.18	1.7005
07:44:08	152.00	2240.32	57.6500	1.7608	50.66	1.7047
07:45:08	152.00	2240.39	57.6667	1.7609	50.59	1.7041
07:45:38	152.15	2240.59	57.6750	1.7610	50.39	1.7023
07:46:08	152.00	2240.16	57.6833	1.7611	50.82	1.7061
07:46:38	152.15	2239.09	57.6917	1.7611	51.89	1.7151
07:47:38	152.00	2239.20	57.7083	1.7612	51.78	1.7142
07:48:38	152.15	2240.26	57.7250	1.7614	50.72	1.7052
07:50:38	152.00	2240.89	57.7583	1.7616	50.09	1.6997
07:51:08	152.00	2240.30	57.7667	1.7617	50.68	1.7049
07:52:08	152.15	2240.78	57.7833	1.7618	50.20	1.7007
07:53:08	152.00	2240.28	57.8000	1.7619	50.70	1.7050
07:53:38	152.00	2239.13	57.8083	1.7620	51.85	1.7148
07:54:08	152.00	2238.58	57.8167	1.7621	52.40	1.7193
07:56:08	152.15	2240.59	57.8500	1.7623	50.39	1.7023
08:00:08	152.00	2241.15	57.9167	1.7628	49.83	1.6974
08:00:38	152.00	2240.60	57.9250	1.7629	50.38	1.7023
08:01:08	152.15	2239.07	57.9333	1.7629	51.91	1.7153
08:02:08	152.15	2239.23	57.9500	1.7631	51.75	1.7139
08:03:08	152.00	2240.02	57.9667	1.7632	50.96	1.7072
08:05:08	152.00	2240.26	58.0000	1.7634	50.72	1.7052
08:05:38	152.00	2240.49	58.0083	1.7635	50.49	1.7032
08:06:08	152.00	2239.95	58.0167	1.7636	51.03	1.7078
08:08:08	152.15	2241.05	58.0500	1.7638	49.93	1.6984
08:08:38	152.00	2241.24	58.0583	1.7639	49.74	1.6967
08:10:38	152.00	2240.11	58.0917	1.7641	50.87	1.7065
08:11:38	152.15	2240.68	58.1083	1.7642	50.30	1.7016
08:12:38	152.15	2240.36	58.1250	1.7644	50.62	1.7043
08:13:08	152.00	2240.61	58.1333	1.7644	50.37	1.7021
08:14:08	152.15	2240.15	58.1500	1.7645	50.83	1.7061
08:16:08	152.15	2240.42	58.1833	1.7648	50.56	1.7038
08:16:38	152.15	2239.94	58.1917	1.7649	51.04	1.7079
08:20:38	152.15	2241.76	58.2583	1.7654	49.22	1.6921
08:22:38	152.00	2240.53	58.2917	1.7656	50.45	1.7029
08:23:08	152.00	2240.25	58.3000	1.7657	50.73	1.7053
08:24:08	152.00	2240.82	58.3167	1.7658	50.16	1.7003
08:26:08	152.00	2240.82	58.3500	1.7660	50.16	1.7003
08:27:08	152.15	2241.24	58.3667	1.7662	49.74	1.6967
08:31:08	152.15	2240.45	58.4333	1.7667	50.53	1.7035

TIME 05-MAR-84	SDT degF	SDP psia	t-t0 HR	L(t-t0)	P-P0 psia	L(P-P0)
08:32:08	152.15	2240.75	58.4500	1.7668	50.23	1.7010
08:32:38	152.15	2240.45	58.4583	1.7668	50.53	1.7035
08:33:38	152.15	2241.08	58.4750	1.7670	49.90	1.6981
08:35:38	152.00	2239.70	58.5083	1.7672	51.28	1.7099
08:36:38	152.00	2240.26	58.5250	1.7673	50.72	1.7052
08:37:08	152.00	2240.53	58.5333	1.7674	50.45	1.7029
08:37:38	152.15	2239.05	58.5417	1.7675	51.93	1.7154
08:38:38	152.15	2240.26	58.5583	1.7676	50.72	1.7052
08:39:38	152.15	2240.61	58.5750	1.7677	50.37	1.7022
08:40:38	152.15	2239.47	58.5917	1.7678	51.51	1.7119
08:42:38	152.00	2240.02	58.6250	1.7681	50.96	1.7072
08:43:38	152.00	2240.16	58.6417	1.7682	50.82	1.7061
08:44:38	152.00	2241.10	58.6583	1.7683	49.88	1.6979
08:45:38	152.00	2240.49	58.6750	1.7685	50.49	1.7032
08:46:38	152.00	2240.61	58.6917	1.7686	50.37	1.7021
08:47:08	152.00	2241.00	58.7000	1.7686	49.98	1.6988
08:48:08	152.15	2239.73	58.7167	1.7688	51.25	1.7097
08:49:08	152.00	2240.14	58.7333	1.7689	50.84	1.7062
08:49:38	152.00	2240.70	58.7417	1.7689	50.28	1.7014
08:50:38	152.00	2240.16	58.7583	1.7691	50.82	1.7061
08:51:38	152.00	2241.30	58.7750	1.7692	49.68	1.6962
08:53:38	152.15	2240.49	58.8083	1.7694	50.49	1.7032
08:55:38	152.00	2240.42	58.8417	1.7697	50.56	1.7038
08:56:38	152.15	2240.96	58.8583	1.7698	50.02	1.6992
08:58:38	152.15	2240.94	58.8917	1.7701	50.04	1.6993
08:59:08	152.15	2241.38	58.9000	1.7701	49.60	1.6955
09:01:08	152.15	2240.45	58.9333	1.7704	50.53	1.7035
09:02:08	152.15	2239.58	58.9500	1.7705	51.40	1.7110
09:03:08	152.15	2240.01	58.9667	1.7706	50.97	1.7073
09:03:38	152.00	2240.75	58.9750	1.7707	50.23	1.7009
09:04:08	152.00	2239.91	58.9833	1.7707	51.07	1.7081
09:06:08	152.00	2241.49	59.0167	1.7710	49.49	1.6945
09:08:08	152.00	2240.61	59.0500	1.7712	50.37	1.7021
09:08:38	152.15	2241.05	59.0583	1.7713	49.93	1.6984
09:09:38	152.15	2241.03	59.0750	1.7714	49.95	1.6986
09:10:08	152.15	2241.55	59.0833	1.7715	49.43	1.6940
09:11:08	152.15	2240.82	59.1000	1.7716	50.16	1.7004
09:12:08	152.15	2241.15	59.1167	1.7717	49.83	1.6975
09:14:08	152.15	2240.45	59.1500	1.7720	50.53	1.7035
09:16:08	152.15	2241.15	59.1833	1.7722	49.83	1.6975
09:18:08	152.15	2240.78	59.2167	1.7724	50.20	1.7007
09:18:38	152.15	2241.40	59.2250	1.7725	49.58	1.6953
09:19:08	152.15	2240.64	59.2333	1.7726	50.34	1.7019
09:21:08	152.15	2240.57	59.2667	1.7728	50.41	1.7025
09:22:08	152.15	2241.34	59.2833	1.7729	49.64	1.6958
09:24:08	152.15	2241.54	59.3167	1.7732	49.44	1.6941
09:25:08	152.15	2241.69	59.3333	1.7733	49.29	1.6927
09:25:38	152.15	2240.71	59.3417	1.7734	50.27	1.7013
09:26:38	152.15	2240.21	59.3583	1.7735	50.77	1.7056
09:27:38	152.00	2240.35	59.3750	1.7736	50.63	1.7044
09:29:38	152.00	2241.56	59.4083	1.7738	49.42	1.6939
09:30:38	152.15	2240.47	59.4250	1.7740	50.51	1.7034
09:31:38	152.00	2241.05	59.4417	1.7741	49.93	1.6984
09:32:08	152.00	2240.58	59.4500	1.7742	50.40	1.7024
09:32:38	152.15	2239.47	59.4583	1.7742	51.51	1.7119
09:33:38	152.00	2240.23	59.4750	1.7743	50.75	1.7055
09:34:08	152.15	2240.94	59.4833	1.7744	50.04	1.6993
09:36:08	152.15	2242.08	59.5167	1.7746	48.90	1.6893
09:37:08	152.15	2242.59	59.5333	1.7748	48.39	1.6848
09:37:38	152.15	2242.38	59.5417	1.7748	48.60	1.6867
09:39:38	152.00	2239.60	59.5750	1.7751	51.38	1.7108
09:40:08	152.15	2239.12	59.5833	1.7751	51.86	1.7148

TIME 05-MAR-84	SDT degF	SDP psia	t-t0 HR	L(t-t0)	P-P0 psia	L(P-P0)
09:41:08	152.15	2239.89	59.6000	1.7752	51.09	1.7083
09:42:08	152.00	2238.93	59.6167	1.7754	52.05	1.7164
09:43:08	152.15	2238.89	59.6333	1.7755	52.09	1.7167
09:44:08	152.15	2240.05	59.6500	1.7756	50.93	1.7070
09:46:08	152.15	2241.10	59.6833	1.7759	49.88	1.6979
09:46:38	152.15	2240.19	59.6917	1.7759	50.79	1.7058
09:47:08	152.15	2240.45	59.7000	1.7760	50.53	1.7035
09:48:08	152.00	2239.98	59.7167	1.7761	51.00	1.7075
09:49:08	152.15	2240.45	59.7333	1.7762	50.53	1.7035
09:49:38	152.00	2240.79	59.7417	1.7763	50.19	1.7006
09:50:08	152.15	2240.40	59.7500	1.7763	50.58	1.7040
09:50:38	152.00	2241.44	59.7583	1.7764	49.54	1.6950
09:51:08	152.00	2240.18	59.7667	1.7765	50.80	1.7059
09:52:08	152.15	2241.17	59.7833	1.7766	49.81	1.6973
09:54:08	152.00	2239.65	59.8167	1.7768	51.33	1.7104
09:55:08	152.15	2241.29	59.8333	1.7769	49.69	1.6963
09:55:38	152.15	2240.05	59.8417	1.7770	50.93	1.7070
09:57:38	152.15	2240.92	59.8750	1.7772	50.06	1.6995
09:58:38	152.00	2240.65	59.8917	1.7774	50.33	1.7018
09:59:08	152.00	2240.91	59.9000	1.7774	50.07	1.6996
10:00:08	152.15	2239.98	59.9167	1.7775	51.00	1.7076
10:00:38	152.00	2240.65	59.9250	1.7776	50.33	1.7018
10:01:08	152.00	2239.42	59.9333	1.7777	51.56	1.7123
10:02:08	152.15	2240.00	59.9500	1.7778	50.98	1.7074
10:03:08	152.15	2239.96	59.9667	1.7779	51.02	1.7077
10:04:08	152.15	2241.31	59.9833	1.7780	49.67	1.6961
10:04:38	152.15	2241.64	59.9917	1.7781	49.34	1.6932
10:05:08	152.00	2240.88	60.0000	1.7782	50.10	1.6999
10:06:08	152.15	2241.83	60.0167	1.7783	49.15	1.6915
10:06:38	152.15	2240.45	60.0250	1.7783	50.53	1.7035
10:07:38	152.15	2240.31	60.0417	1.7785	50.67	1.7047
10:09:38	152.15	2241.61	60.0750	1.7787	49.37	1.6935
10:10:08	152.15	2241.55	60.0833	1.7788	49.43	1.6940
10:10:38	152.00	2240.91	60.0917	1.7788	50.07	1.6996
10:12:38	152.15	2241.99	60.1250	1.7791	48.99	1.6901
10:14:38	152.15	2240.31	60.1583	1.7793	50.67	1.7047
10:15:38	152.15	2240.28	60.1750	1.7794	50.70	1.7050
10:16:08	152.00	2240.02	60.1833	1.7795	50.96	1.7072
10:18:08	152.00	2241.40	60.2167	1.7797	49.58	1.6953
10:20:08	152.15	2241.90	60.2500	1.7800	49.08	1.6909
10:22:08	152.00	2241.10	60.2833	1.7802	49.88	1.6979
10:23:08	152.15	2240.00	60.3000	1.7803	50.98	1.7074
10:23:38	152.15	2239.61	60.3083	1.7804	51.37	1.7107
10:24:38	152.15	2240.99	60.3250	1.7805	49.99	1.6989
10:25:08	152.15	2240.68	60.3333	1.7806	50.30	1.7016
10:26:08	152.15	2241.47	60.3500	1.7807	49.51	1.6947
10:26:38	152.15	2240.54	60.3583	1.7807	50.44	1.7028
10:28:38	152.15	2240.66	60.3917	1.7810	50.32	1.7017
10:29:38	152.31	2240.29	60.4083	1.7811	50.69	1.7049
10:30:38	152.15	2241.08	60.4250	1.7812	49.90	1.6981
10:31:08	152.00	2241.23	60.4333	1.7813	49.75	1.6968
10:31:38	152.15	2240.59	60.4417	1.7813	50.39	1.7023
10:33:38	152.15	2241.80	60.4750	1.7816	49.18	1.6918
10:35:38	152.15	2238.81	60.5083	1.7818	52.17	1.7175
10:36:08	152.15	2238.19	60.5167	1.7819	52.79	1.7225
10:38:08	152.15	2240.15	60.5500	1.7821	50.83	1.7061
10:39:08	152.31	2239.33	60.5667	1.7822	51.65	1.7131
10:40:08	152.15	2240.87	60.5833	1.7824	50.11	1.6999
10:42:08	152.15	2240.92	60.6167	1.7826	50.06	1.6995
10:42:38	152.15	2239.73	60.6250	1.7827	51.25	1.7097
10:43:08	152.15	2239.28	60.6333	1.7827	51.70	1.7135
10:43:38	152.15	2240.29	60.6417	1.7828	50.69	1.7049

TIME	SDT degF	SDP psia	t-t0 HR	L(t-t0)	P-P0 psia	L(P-P0)
05-MAR-84						
10:47:38	152.15	2241.90	60.7083	1.7832	49.08	1.6909
10:48:38	152.15	2242.06	60.7250	1.7834	48.92	1.6895
10:49:08	152.31	2242.06	60.7333	1.7834	48.92	1.6895
10:49:38	152.15	2239.94	60.7417	1.7835	51.04	1.7079
10:50:38	152.15	2239.02	60.7583	1.7836	51.96	1.7157
10:51:38	152.15	2239.68	60.7750	1.7837	51.30	1.7101
10:52:38	152.31	2239.76	60.7917	1.7838	51.22	1.7094
10:53:38	152.15	2240.99	60.8083	1.7840	49.99	1.6989
10:57:38	152.31	2240.24	60.8750	1.7844	50.74	1.7054
10:58:38	152.15	2240.22	60.8917	1.7846	50.76	1.7055
10:59:08	152.31	2241.27	60.9000	1.7846	49.71	1.6965
10:59:38	152.31	2241.57	60.9083	1.7847	49.41	1.6938

[228] T0=05-MAR-84 10:59:38

P0=2241.57 FT=010:00:00

CLOSE PCT.

TIME	SDT degF	SDP psia	t-t0 HR	L(t-t0)	P-P0 psia	L(P-P0)	L(Horn)
05-MAR-84							
11:00:08	152.31	2253.50	0.0083	-2.0792	11.93	1.0766	3.0795
11:00:38	152.31	2288.60	0.0167	-1.7782	47.03	1.6724	2.7789
11:01:08	152.31	2290.67	0.0250	-1.6021	49.10	1.6911	2.6031
11:03:08	152.31	2291.54	0.0583	-1.2341	49.97	1.6987	2.2366
12:07:08	151.70	2292.12	1.1250	0.0512	50.55	1.7037	0.9951
12:39:08	151.24	2292.28	1.6583	0.2197	50.71	1.7051	0.8470
12:55:08	150.93	2292.34	1.9250	0.2844	50.77	1.7056	0.7920
13:03:08	150.93	2292.36	2.0583	0.3135	50.79	1.7057	0.7678
13:04:08	150.78	2292.33	2.0750	0.3170	50.76	1.7055	0.7649

[230] START TIME:05-MAR-84 13:04:38

TIME	SDT degF	SDP psia
05-MAR-84		
13:04:38	150.78	2280.57
13:05:08	150.78	2286.04
13:05:38	150.78	2289.95
13:06:08	150.78	2291.73
13:06:38	150.78	2292.85
13:07:38	150.63	2293.61
13:11:38	150.32	2291.41
13:15:38	150.02	2290.22
13:19:38	150.17	2289.74
14:23:38	150.02	2291.97
14:55:38	150.02	2292.51
14:57:38	149.87	2292.65
14:58:38	149.71	2292.62
14:59:38	149.71	2293.22
15:00:08	149.87	2293.42
15:01:08	149.71	2292.52
15:02:08	149.87	2292.99
15:02:38	149.87	2292.92
15:03:08	149.87	2294.00
15:05:08	149.87	2293.02
15:05:38	149.87	2292.67
15:06:08	149.87	2293.32
15:08:08	149.71	2293.03
15:09:08	149.71	2293.31
15:09:38	149.87	2291.59
15:10:38	149.87	2293.27
15:11:08	149.87	2291.69
15:12:08	149.87	2292.50
15:14:08	149.71	2293.13

OPEN PCT

05-MAR-84	SDT degF	SDP psia
15:14:38	149.71	2292.69
15:16:38	149.71	2292.89
15:17:08	149.71	2293.74
15:17:38	149.71	2292.68
15:18:38	149.71	2292.89
15:19:08	149.71	2292.13
15:19:38	149.71	2293.01
15:20:38	149.56	2292.21
15:21:08	149.56	2293.14
15:25:08	149.56	2292.93
15:26:08	149.56	2293.26
15:30:08	149.56	2292.91
15:30:38	149.41	2292.32
15:31:08	149.71	2293.31
15:35:08	149.56	2292.49
15:35:38	149.41	2292.83
15:36:08	149.56	2292.47
15:36:38	149.41	2293.07
15:37:38	149.56	2293.42
15:38:38	149.56	2292.45
15:39:38	149.56	2292.56
15:40:08	149.56	2293.33
15:41:08	149.56	2293.15
15:41:38	149.56	2293.36
15:42:38	149.41	2292.86
15:43:08	149.56	2293.07
15:43:38	149.41	2291.69
15:44:08	149.41	2292.28
15:48:08	149.41	2293.19
15:49:08	149.41	2292.46
15:51:08	149.56	2293.12
16:23:08	149.56	2293.01
16:39:08	149.41	2293.07
16:43:08	149.41	2293.07
16:45:08	149.56	2293.03
16:47:08	149.56	2293.77
16:49:08	149.56	2293.22
16:51:08	149.56	2293.78
16:55:08	149.41	2293.42
16:55:38	149.41	2292.63
16:56:38	149.41	2293.21
16:57:08	149.41	2292.65
16:58:08	149.41	2293.21
16:58:38	149.56	2293.45
16:59:08	149.41	2292.63
16:59:38	149.41	2292.88
17:00:08	149.41	2279.65
17:00:38	149.41	2265.56
17:02:38	149.10	2264.68
17:03:08	149.10	2263.03
17:03:38	148.95	2245.55
17:04:08	148.80	2234.48
17:04:38	148.80	2238.67
17:12:38	147.88	2238.64
17:16:38	147.73	2238.63
17:18:38	147.58	2238.60
17:19:38	147.58	2238.62
17:20:08	147.58	2231.06
17:22:08	147.12	2188.78
17:22:38	146.96	2155.18
17:23:08	146.81	2158.93
17:23:38	146.66	2159.84

P.O.O.H.

1st.GRADIANT STOP 1691.7 mAHBDF

P.O.O.H.

2nd.GRADIANT STOP 1591.7 mAHBDF

05-MAR-84	SDT degF	SDP psia
17:31:38	144.97	2159.88
17:35:38	144.52	2159.84
17:37:38	144.21	2159.82
17:38:38	144.21	2159.72
17:39:08	144.21	2151.35
17:39:38	144.06	2136.12
17:40:08	144.06	2117.92
17:40:38	143.75	2098.06
17:41:38	143.60	2065.88
17:42:08	143.44	2041.85
17:42:38	143.14	2020.98
17:43:38	142.37	1975.80
17:44:08	141.91	1952.57
17:45:08	140.84	1903.84
17:47:08	138.38	1802.54
17:48:08	136.69	1750.48
17:48:38	135.92	1723.51
17:49:08	135.15	1695.65
17:49:38	134.07	1666.96
17:50:38	132.37	1607.83
17:51:08	131.45	1577.30
17:51:38	130.52	1546.00
17:52:08	129.44	1513.52
17:53:08	127.27	1446.15
17:53:38	126.19	1411.66
17:54:38	123.86	1340.94
17:55:08	122.62	1304.67
17:55:38	121.38	1267.64
17:56:08	120.29	1249.45
17:56:38	118.89	1233.17
17:57:08	117.80	1219.01
17:57:38	116.56	1211.57
17:58:08	115.31	1205.56
17:58:38	114.22	1193.29
17:59:08	112.97	1177.67
17:59:38	111.88	1160.99
18:00:38	108.75	1124.47
18:01:08	105.46	1101.29
18:01:38	102.17	1075.83
18:02:38	95.55	1020.43
18:03:08	92.40	989.25
18:03:38	89.39	953.04
18:04:08	86.38	921.47
18:04:38	83.52	895.42
18:05:08	80.82	884.10
18:05:38	78.11	853.41
18:06:08	75.40	828.95
18:06:38	72.85	817.42
18:07:38	68.53	816.77
18:08:08	66.76	816.59
18:16:08	50.33	820.72
18:24:08	45.47	824.38
18:26:08	44.82	824.37
18:26:38	44.65	485.93
18:27:08	43.84	129.88
18:27:38	42.87	70.38
18:28:08	42.38	39.46
18:28:38	41.73	26.77
18:29:08	41.24	24.72
18:31:08	39.12	22.13
18:32:08	38.47	20.99
18:32:38	38.31	19.92

P.O.O.H.

3rd.GRAIDENT STOP IN LUB.

GRADIENTS COMPLETED.

	SDT	SDP
05-MAR-84	degF	psia
18:40:38	36.35	19.34
18:48:38	36.68	18.99
18:49:08	36.68	18.98

TECHNICAL DATA

GAUGE

Type : SDP
Transducer module : 83053
Recorder module : 83070

OPERATION SET UP

Delay time : 1 MIN.
Scanning rate : 30 SEC.
Averaging : 16
Relative values : USED
Compression algorithm : USED
Compression level : 8

CALIBRATION DATA

Before job:

Ambiant pressure : 2.76 PSIA
Ambiant Temperature : 24.73 °C

After job:

Ambient pressure : 14.17 PSIA
Ambient temperature : 9.55 °C

Date last calibration : 9/2-84