

ESPO / STATOIL / NORSK HYDRO / ELF
DEMINEX / DNO

Saga Petroleum a.s.

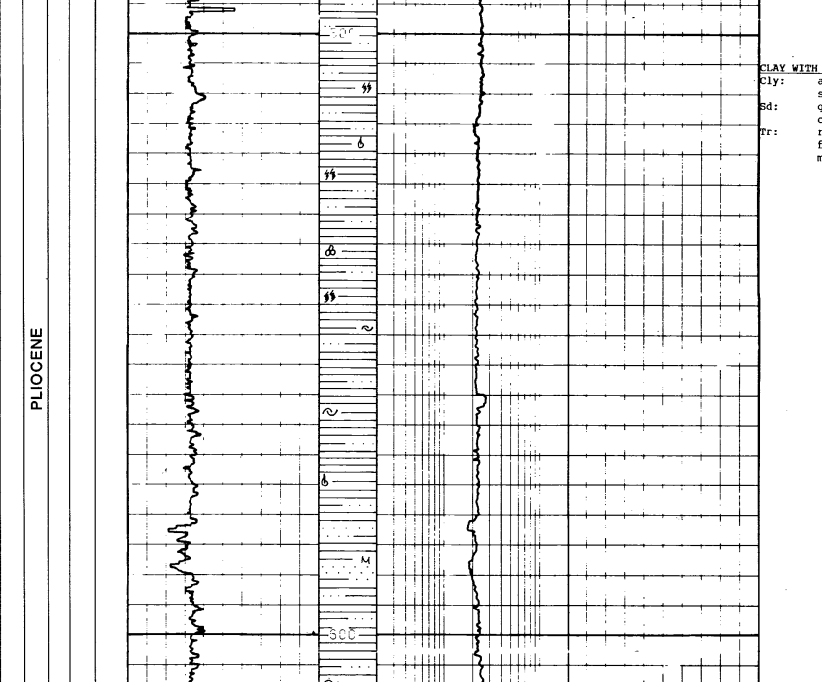
Composite Well Log
Well 347-10

SCALE: 1:500 RIG: TREASURE SAGA

COUNTRY: NORWAY LOCATION: TAMPEN SPUR
OPERATOR: SAGA PETROLEUM A/S LATITUDE: 61°25' 2.64"
LICENCE: 089 LONGITUDE: 2°07' 36.25"
RIG TAKEN OVER BY THE LICENCE: 23/8-86 UTM COORDINATES: 453 285.19m
DATE SPUNDED: 28/5-86 ELEVATIONS: 8552 TO 8600m
T.D. DATE: 1/11-86 RKB-SEA LEVEL: 326m
RIG COMPLETION STATUS: P AND A Oil Well WATER DEPTH: 300m
LOGGERS: J. S. JENSEN, K. H. HANSEN

WELLING CONTRACTOR: WILHELMSEN
MUDLOGGING SERVICE: EXPLORATION LOGGING
OPEN HOLE LOGS: ANADRIL(MWD)/DRESSER (Laser Wire Line Logs)

LOG TYPE	DATE	DEPTH (m)	LOGGERS
30" CASING	30"	423	326-428
20" CASING	20"	901	428-918
13 3/8" CASING	13 3/8"	1989	918-1920
9 5/8" CASING	9 5/8"	2755	1920-3000



AUTHOR: C. CARSTENS, APPR: T. SOLLI, DRAFTED BY: R. KJØLSTAD, DATE: MARCH 1987

DEOLOGICAL SYMBOLS

CLAYSTONE	SHALE	LIMESTONE	SANDSTONE	CONGLOMERATE
GRECCIA	LIMESTONE	DOLOMITE	MARL	SALT
ANHYDRITE	GLAUCONITE	COAL	BITUMINOUS SANDSTONE	

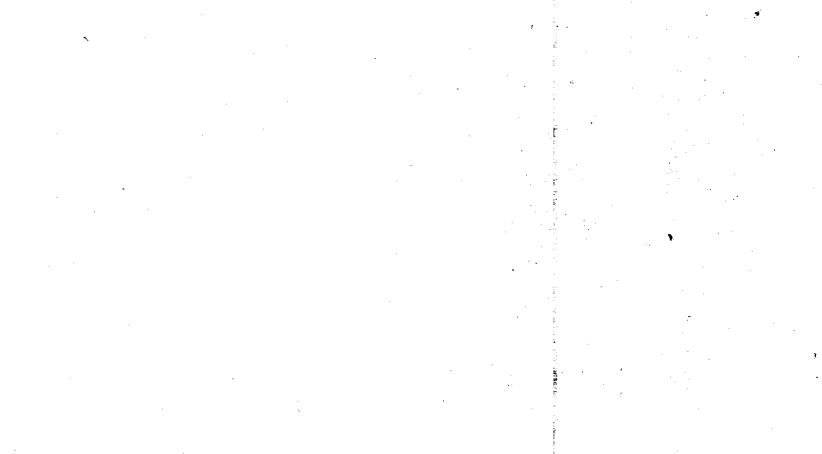
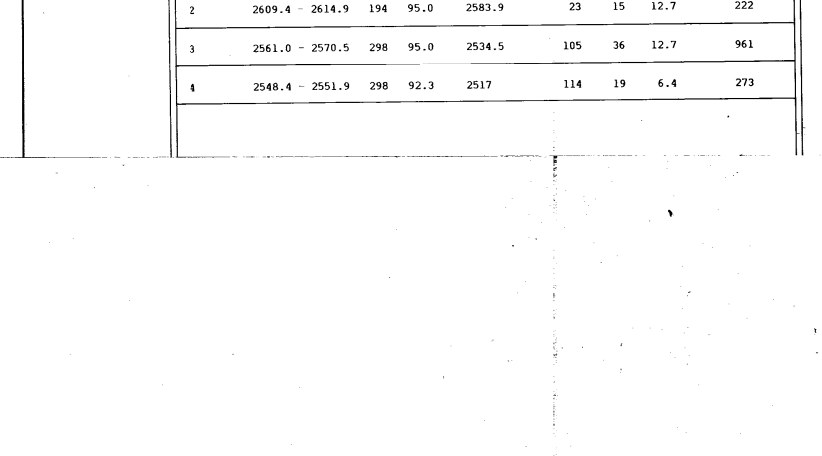
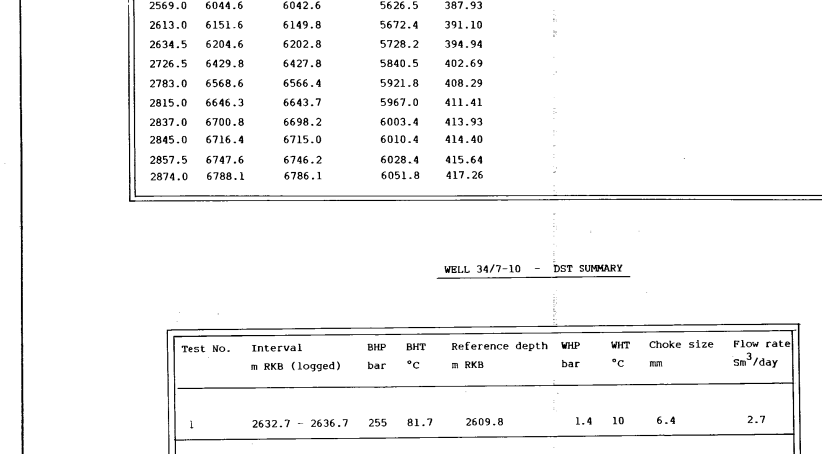
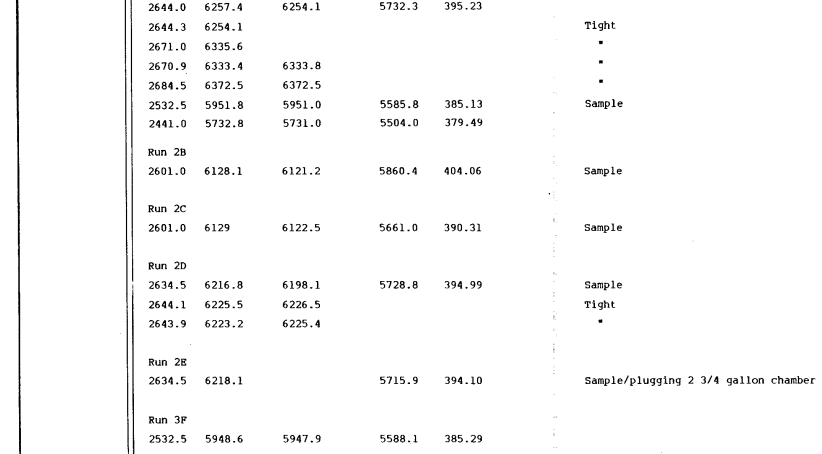
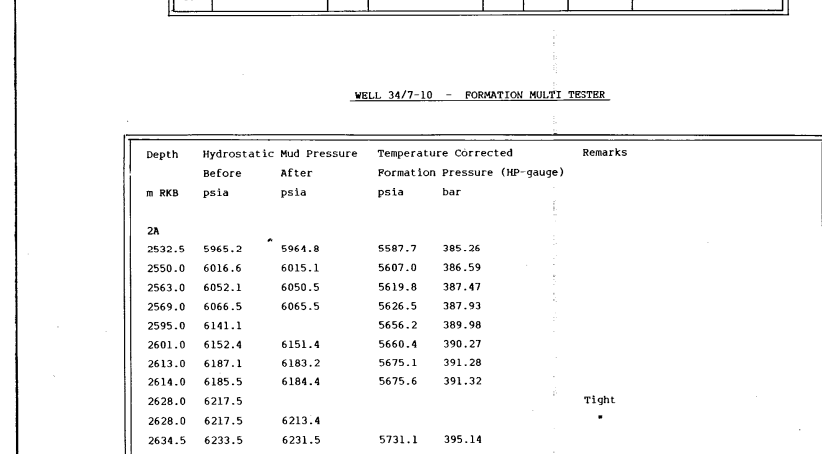
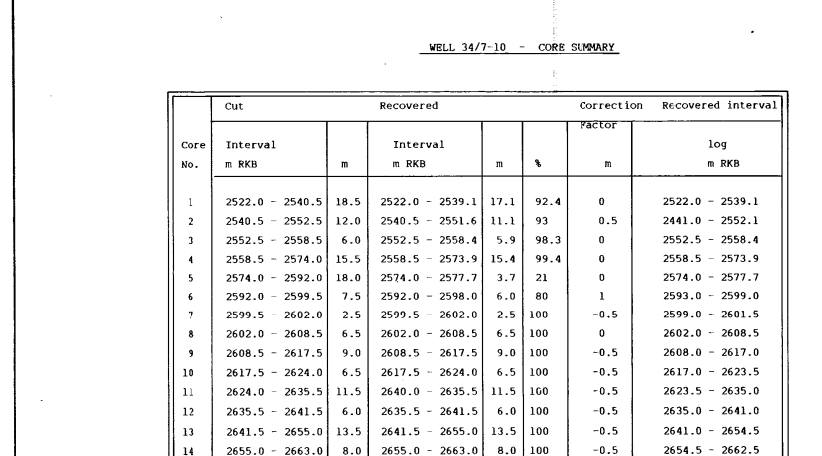
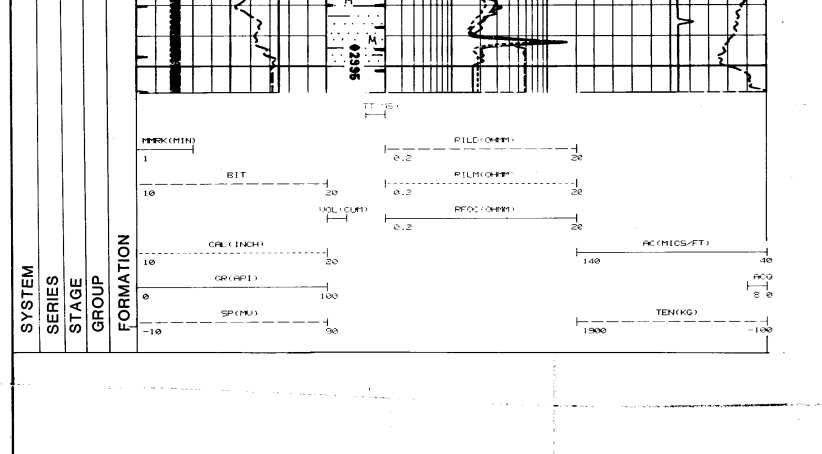
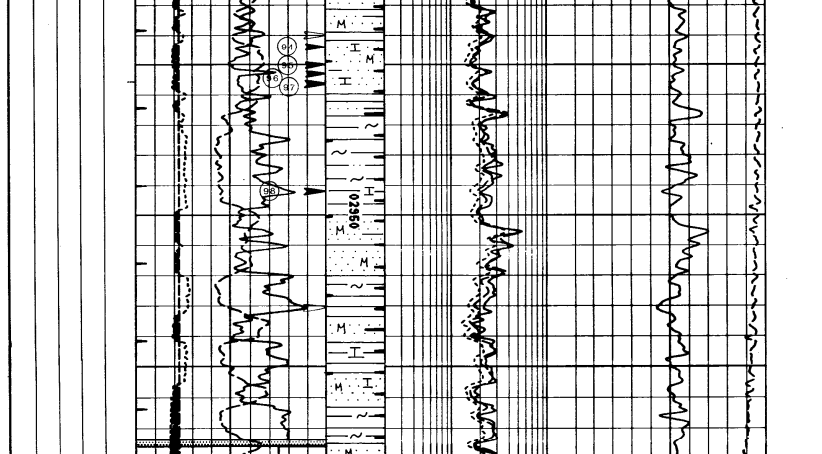
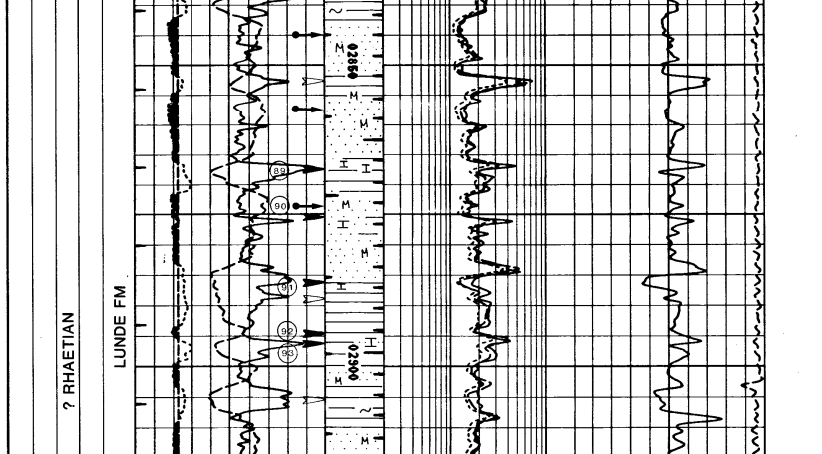
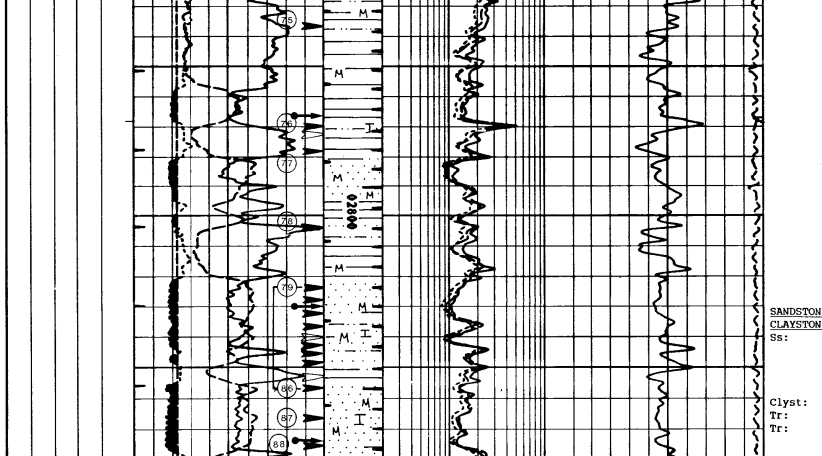
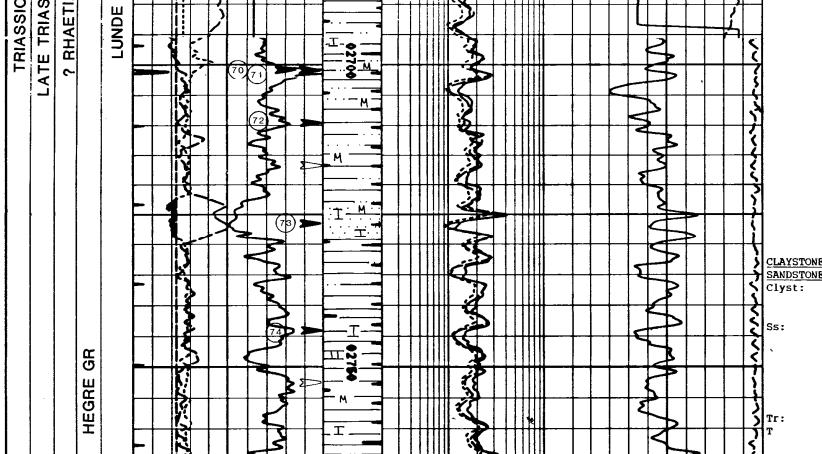
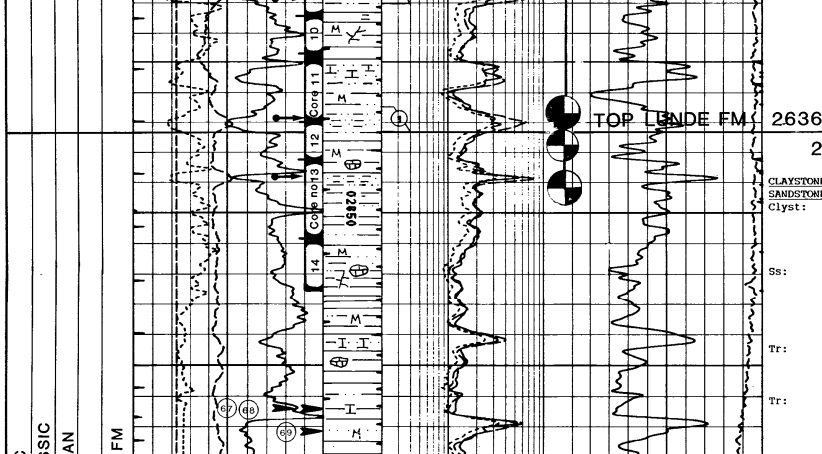
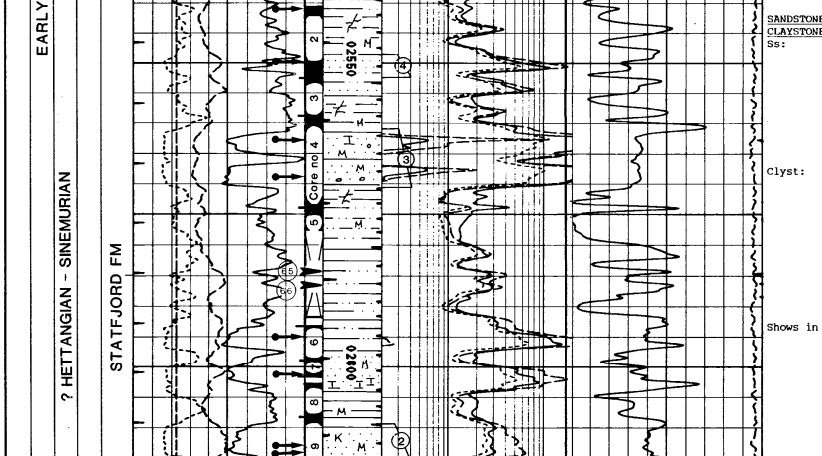
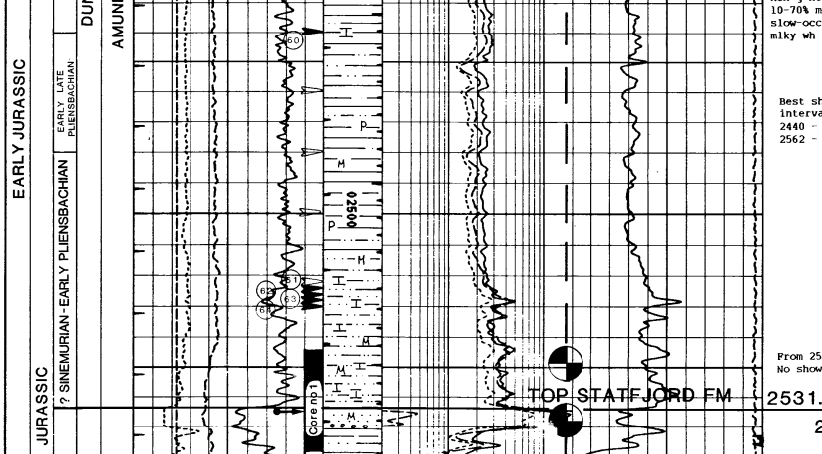
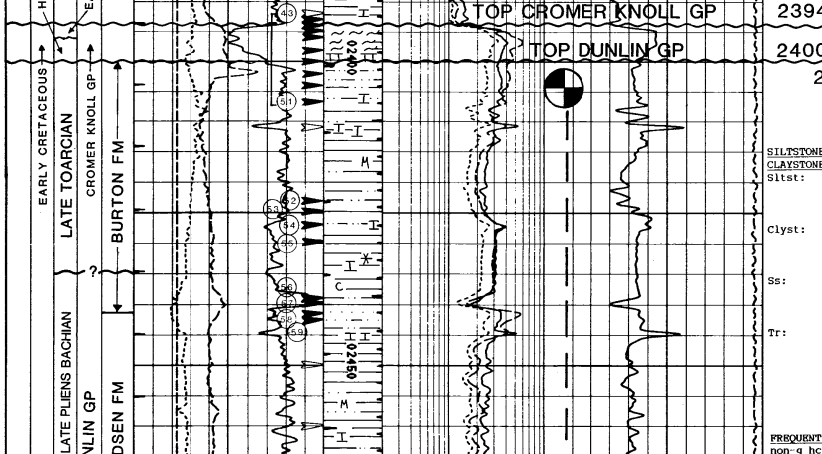
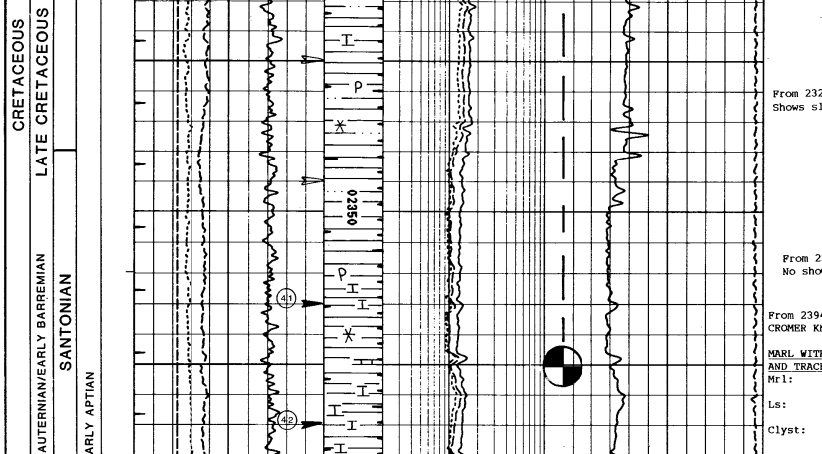
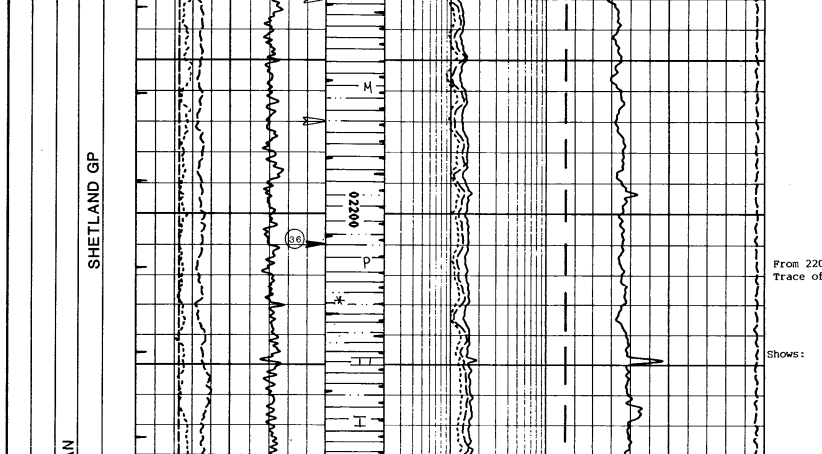
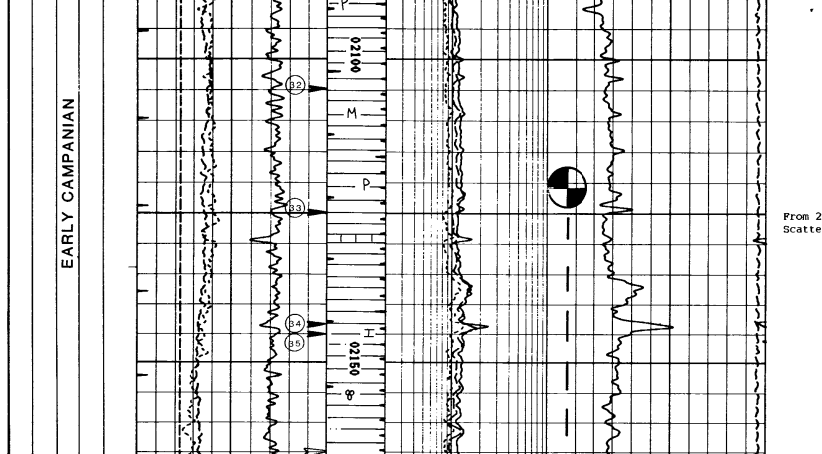
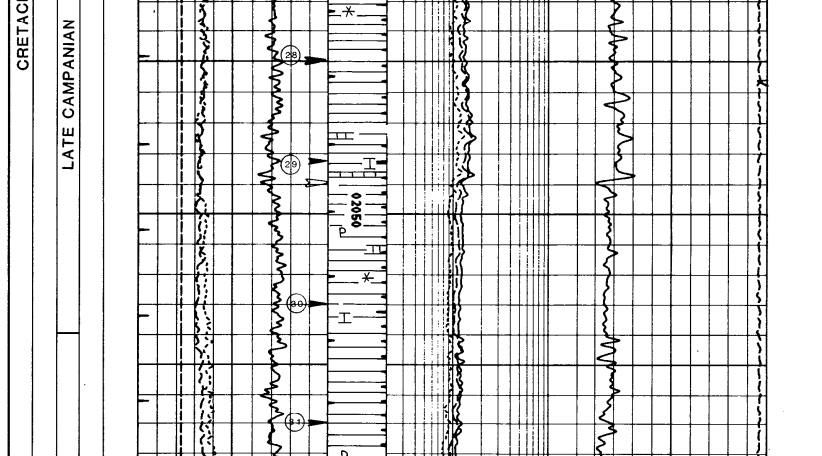
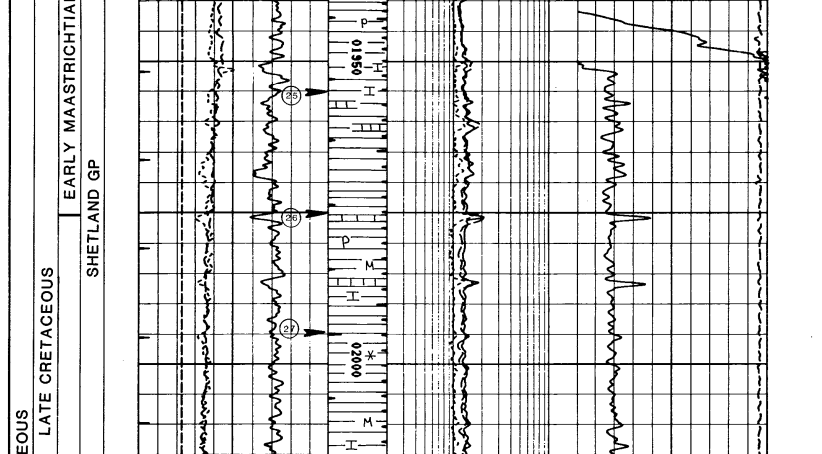
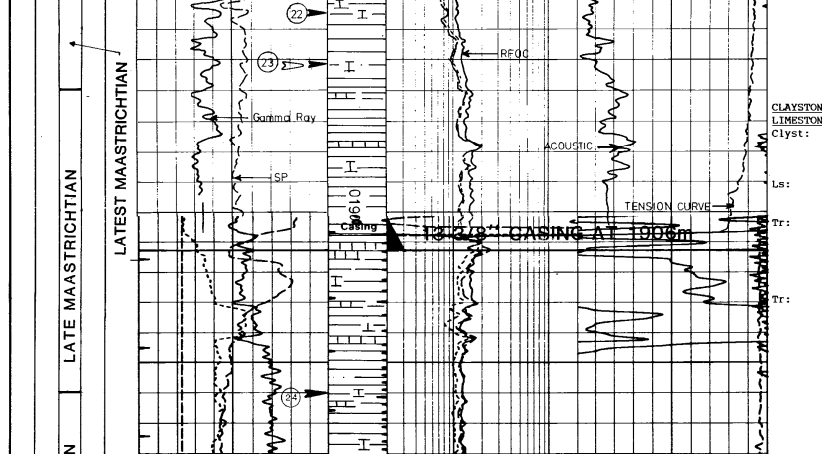
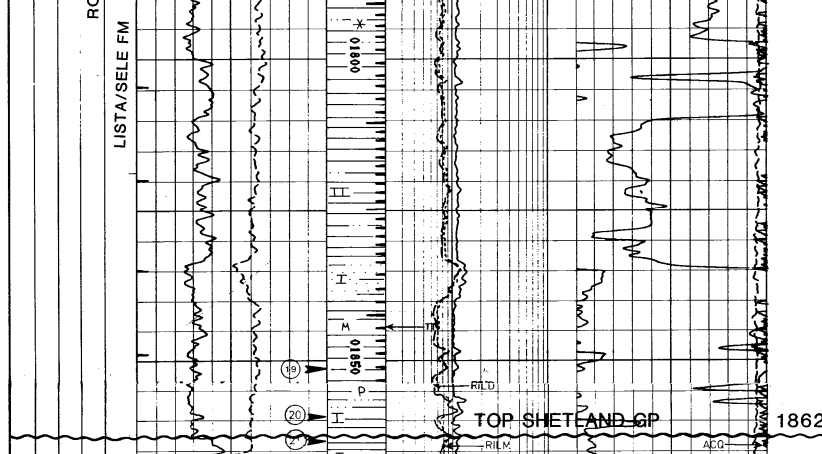
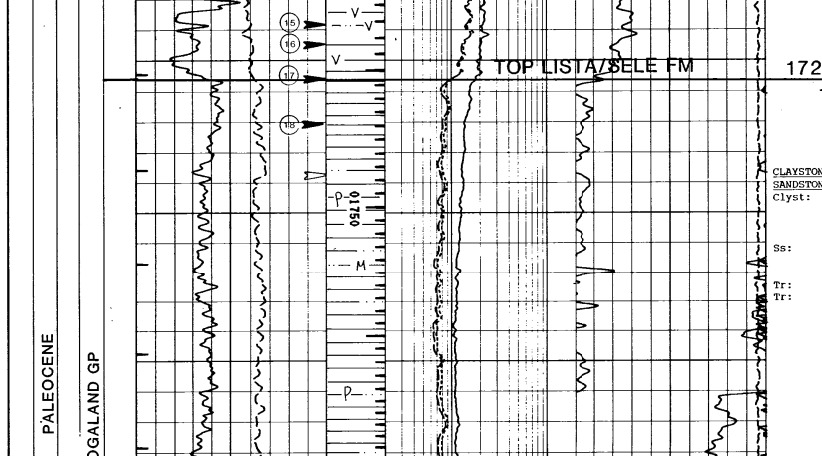
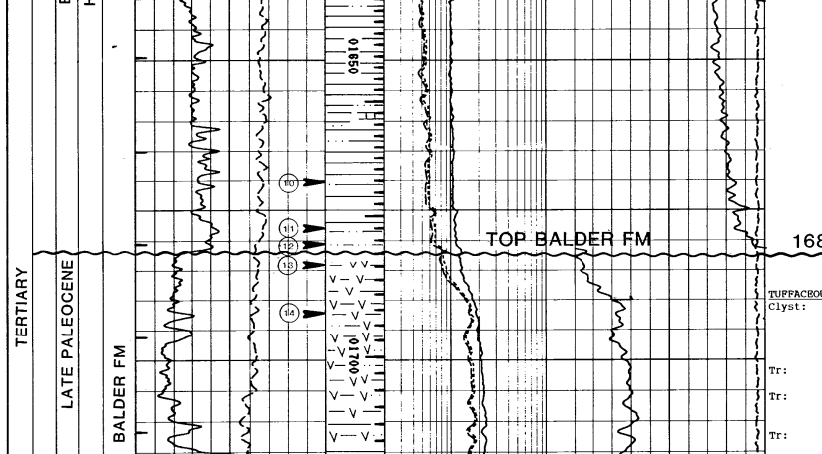
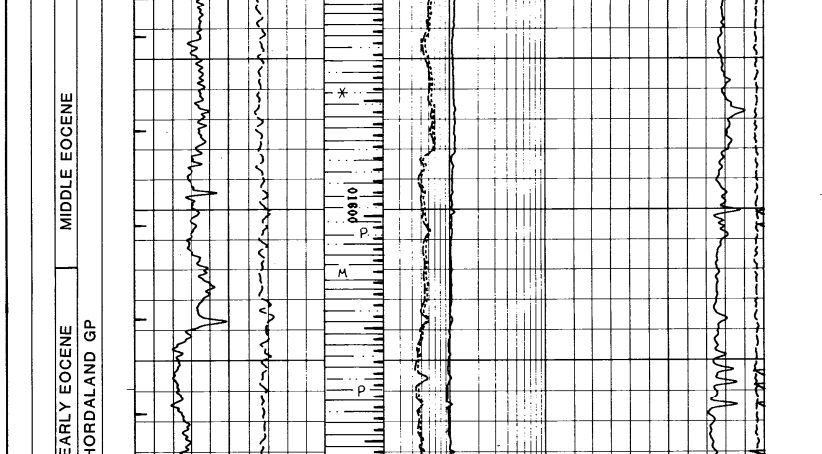
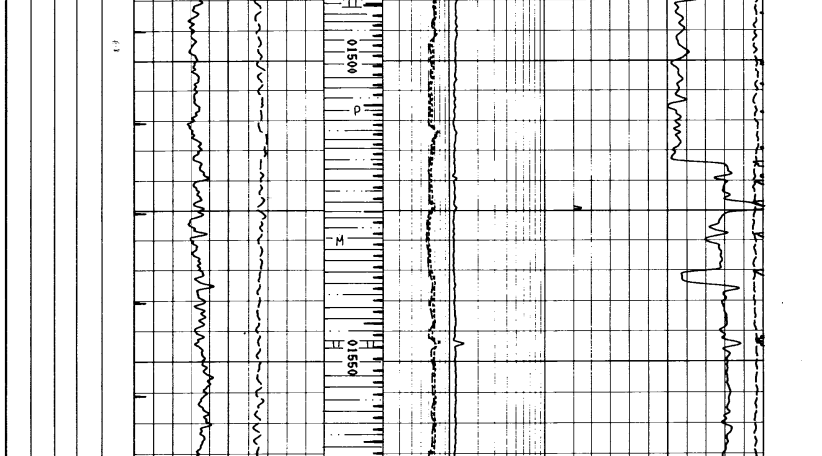
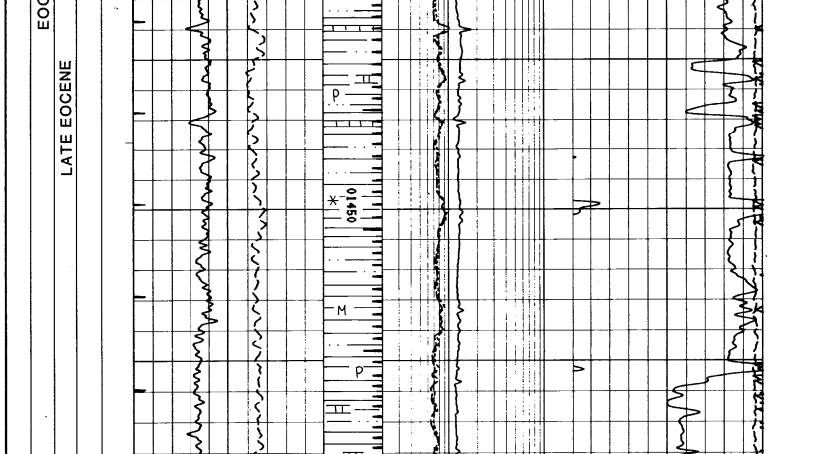
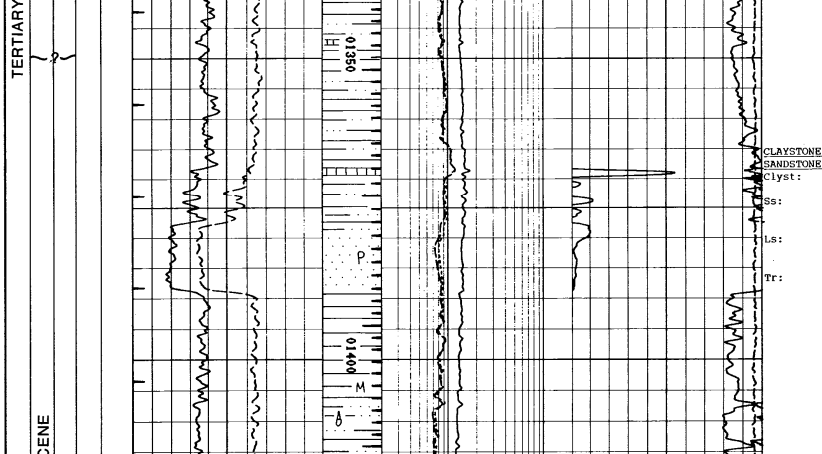
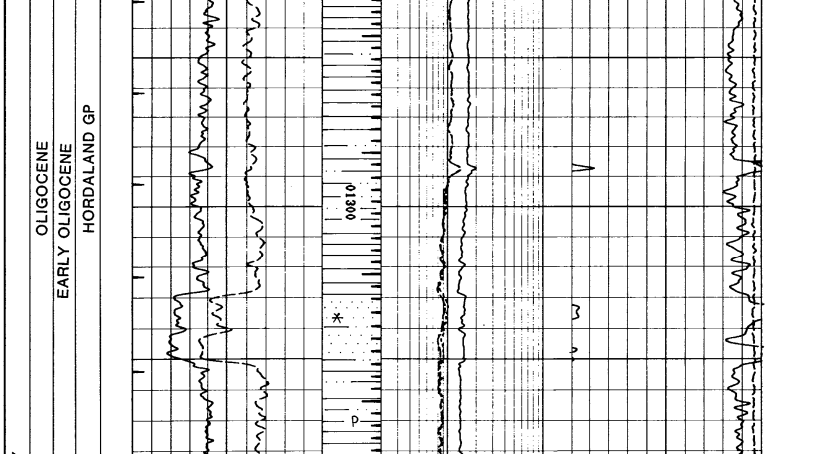
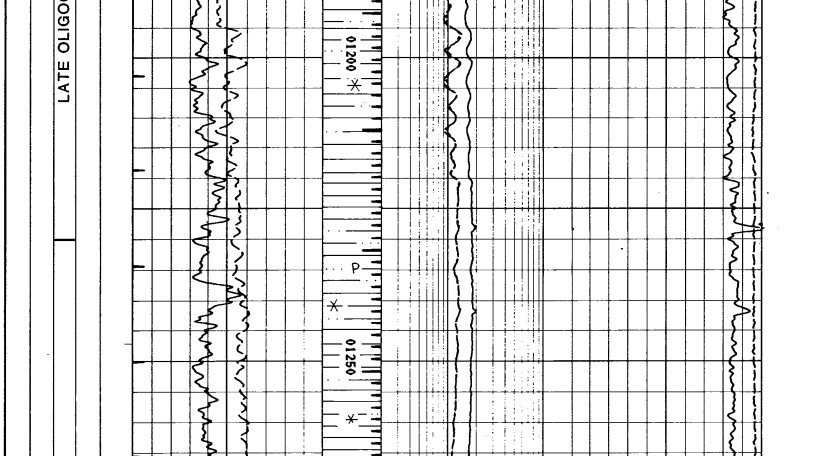
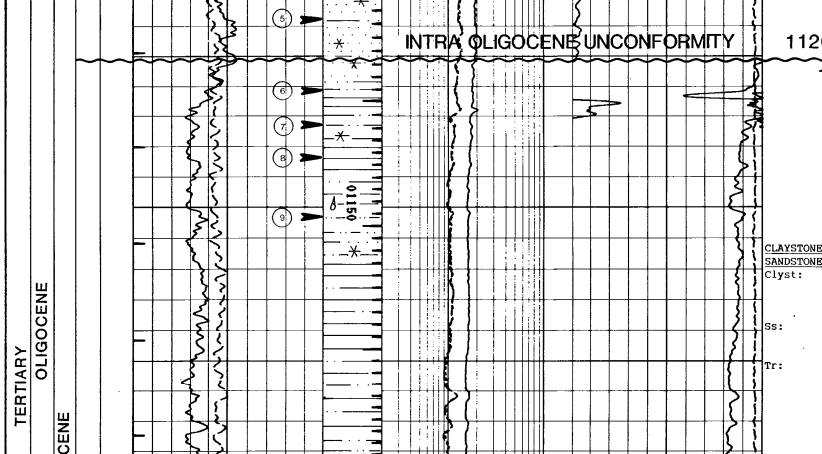
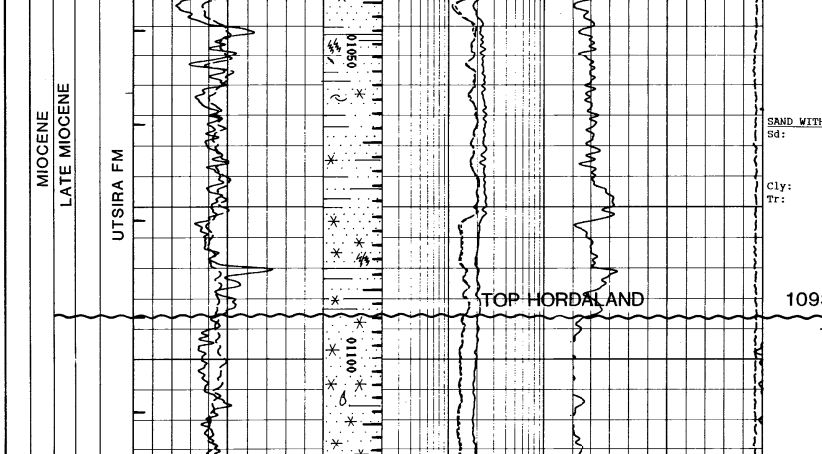
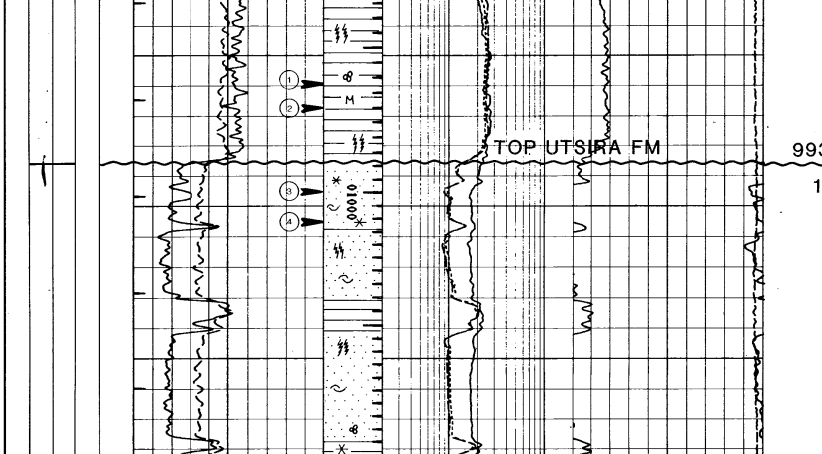
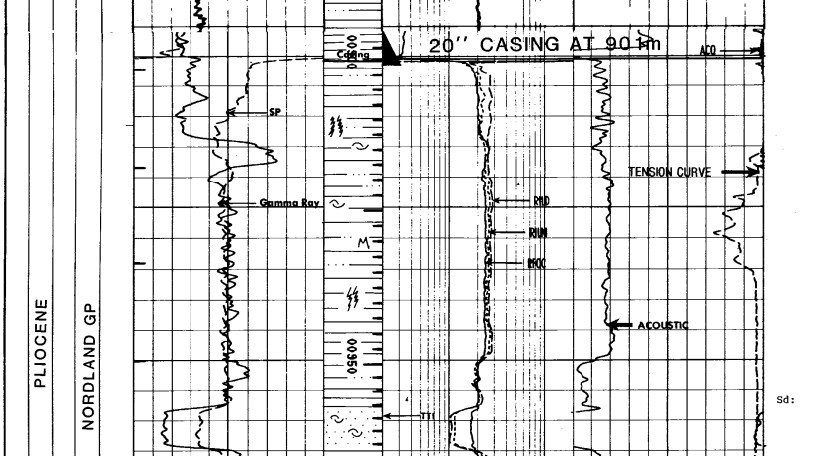
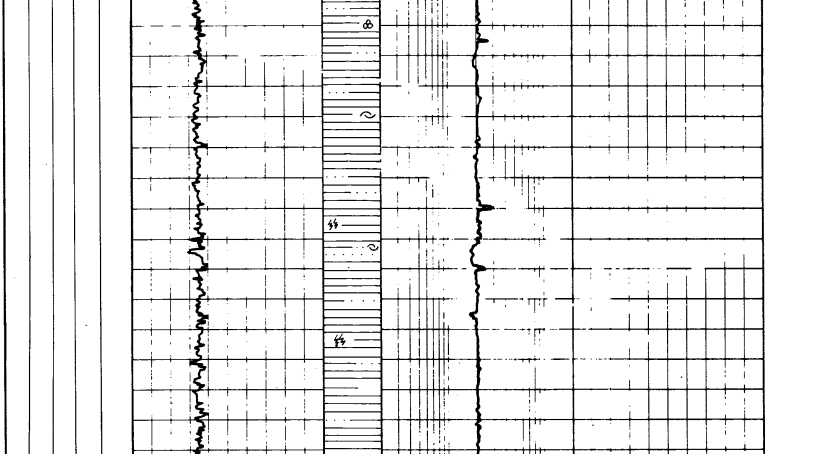
LOG SCALES

MWD DOWN TO 20" CASING SHOE (901m)

DEPTH (m)	ROD NO.
0	100
100	200
200	300

WIRELINE LOGS FROM 20" CASING SHOE (901m)

DEPTH (m)	ROD NO.
0	100
100	200
200	300



WELL 347-10 - OVER SUMMARY

DEPTH (m)	FORMATION	LOGGERS
0	30" CASING	326-428
901	20" CASING	428-918
1920	13 3/8" CASING	918-1920
3000	9 5/8" CASING	1920-3000