



PHILLIPS PETROLEUM COMPANY NORWAY

UTENLANDSK AKSJESELSKAP

P.O. BOX 69 - 4001 STAVANGER, NORWAY - PHONE 96711 - CABLE: PHILLSTAV - TELEX: 33105

JED/prh  
GC/409-76

August 19, 1976

Statens Oljedirektorat  
Lagårdsveien 80  
4000 Stavanger

Attention: Inspection and Control Section

Dear Sirs,

RE: PERMANENT ABANDONMENT OF PHILLIPS WELL 2/4-2X

Attached please find for your information and files a copy of the inspection report on the sea floor condition of Phillips well 2/4-2X.

Very truly yours,

R.D. Stiehler, Manager  
Drilling & Production  
Ekofisk Operation

File: 04-835-2/4-2X-6B



INTER-OFFICE CORRESPONDENCE  
STAVANGER OFFICE

BRG/es

Stavanger, Aug. 11, 1976  
Gab-40-76

Hose Bundle and 4" pipeline  
salvaged at 2x well.

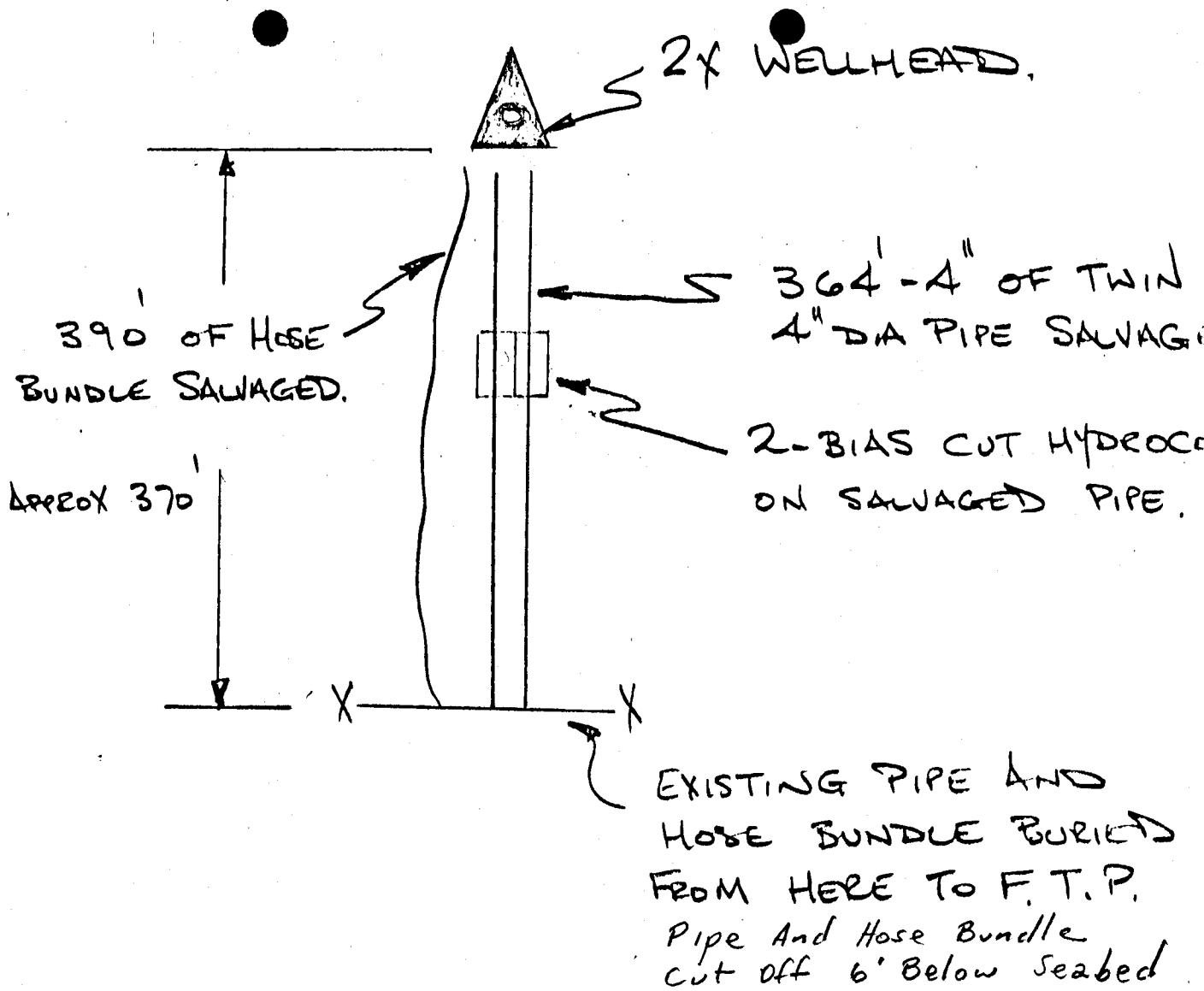
M. R. Hefner

STAVANGER OFFICE

Attached is barge 279's report on salvage of the twin 4" pipeline and hosebundle near 2x well. This pipe and hosebundle was exposed on the seabed. You will note that the pipe and hosebundle was cut off 6 feet under the seabed leaving the buried portion of the line abandoned in place. This 4" pipeline, as all the other pipelines within 5 mile of FTP are buried with 10 foot of cover.

A handwritten signature in cursive script, appearing to read "B. R. Gable", written over a horizontal line.

B. R. Gable



DETAIL OF TWIN 4" LINES AND HOSE BUNDLE SALVAGE 2x WELLHEAD TO F.T.P.

4TH AUGUST '76.

BAR 279  
J. WILSON.

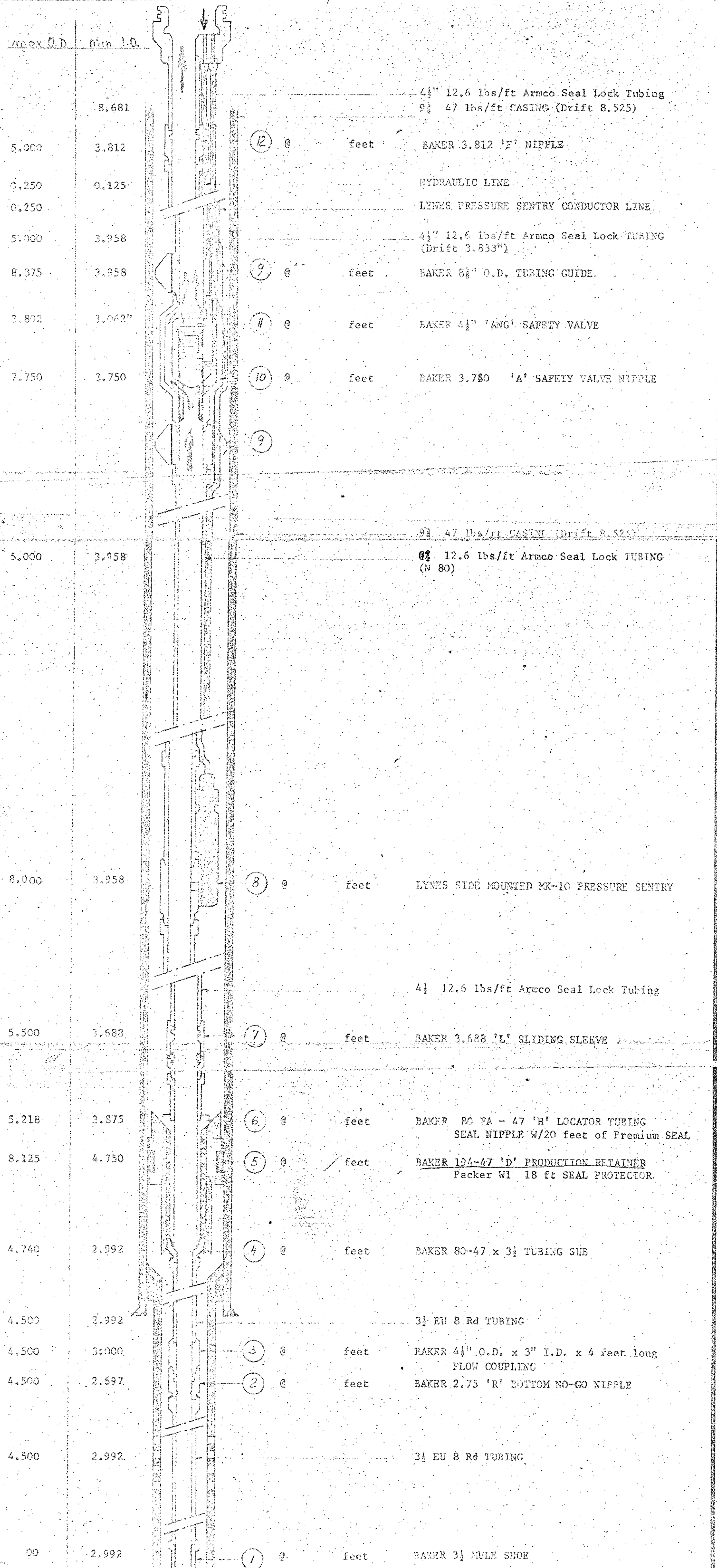
*JW*

File 5630/127

Well  
 2/4-2X-

ENG. REPORT NO.

NAME PHILLIPS PETROLEUM - NOKALVA  
 EKOFISK FIELD COMPLETION



DWG. NO. 213  
 0221

DRAWN BY  
 APPROVED  
 DATE

REVISION DATES:

DWG. NO. 212  
 025

15.44

33100 noped n

33105b ppco n

File

04-835-6B

tx 6280/74

stavanger 10, sept 1974

Well 2/4-2X

attn v a christensen - npd - stavanger

-----  
re - testing of well 2/4-2x equipment

the subsea christmas tree for the subject well had all of the valves repaired and was subsequently tested to 10,000 psig. after the tree was installed the autolock connector and 9 5/8 inch casing pack off was tested to 3500 psig and pull tested with 100,000 lbs over the weight of the tree.

the production tubing was tested after installation to 5000 psig. the following sequence of actions then took place.

- a) flowed well to clean up
- b) acidized well
- c) flowed well to clean up
- d) ran safety valve and set in 4 1/2 inch tubing at 529 ft rkb.
- e) tested safety valve as follows -
  - 1) pressure test safety valve control line to 6000 psig. o.k.
  - 2) close safety valve and bleed tubing pressure from 3750 psig to 2000 psig in 500 psig increments to check that safety valve was properly seated. o.k.
  - 3) opened safety valve and flowed for 5 minutes
  - 4) closed safety valve and bleed tubing pressure to 450 psig. 30 minute shut in tubing pressure 460 psig. 1 hour shut in tubing pressure 460 psig. valve holding.
  - 5) bleed tubing pressure to 100 psig. and check for 30 minutes. no change in pressure. valve holding.
  - 6) pressure tbg above safety valve to 4000 psig and open safety valve
  - 7) displace tubing with 16 bbls methonal and close safety valve and bleed off tubing pressure.
  - 8) closed a l l christmas tree valves and button up tree.

as pointed out in our twx of 10/9 - 74 we have been unable to obtain a satisfactory pressure test on the flowline and production service lines at the well. our present plans are to move the ocean viking to 2/4-1ax. we will move a ~~XXXXXXXXXXXXXXXXXXXXXX~~

barge onto the 2/4-2x within 3 months to finish connecting the lines. in the meantime, the 2/4-2x location will be marked with a buoy located within 100 ft of the wellhead.

r d stiehler/ppco stavanger/ norway

☐

33100 noped n

33105b ppco n

INDIVIDUAL WELL COMPLETION RECORD

Lease Ekofisk

Well No. 2/4-2x

AFE P- NW-5514

LINE MEASUREMENTS OF WELL:

RKB to sea level - 232'  
RKB - 89'

ELEVATIONS:

Ground \_\_\_\_\_ Ft.  
Derrick Floor \_\_\_\_\_ Ft.  
R K B \_\_\_\_\_ Ft.  
Top Csg. Fig. \_\_\_\_\_ Ft.  
Or Bench Mark \_\_\_\_\_ Ft.

COST DATA:

Est. Total Mud \_\_\_\_\_  
TOTAL PAID DRILLING CONTRACTOR:  
Footage \$ \_\_\_\_\_  
Day Work \$ \_\_\_\_\_

Measurement Taken From 321' RKB to seabed

CASING						CEMENT					
Date	Size	Weight	Condition & Grade	Amount Run	Where Set	No. Sacks	Kind	Depth Of Plug	Top In Annulus	Amount Pulled	Date Pulled
Jan. 28, 70	30"	309	1 - 1" Well	123	430	1070	Dalen Portland	389	Surface	NONE	
Jan. 30, 70	20"	133	1 -J-55	1679	1991.37	2980	"	1884	"	"	
Feb. 14, 70	13 3/8"	68	1-J-55	5037	5342	3400	"	4700	"	"	
March 10, 70	9 5/8"	47	1-N-80	9567.29	9863.29	2200	Class <sub>B</sub>	9572	-	"	
April 6, 70	7" liner	29	1-N-80	1469	11117	170	Class <sub>B</sub>	11082	9950	"	

INDIVIDUAL WELL COMPLETION RECORD

Lease Ekofisk

Well No. 2/4-2x

AFE P- NW-5514

LINE MEASUREMENTS OF WELL:

RKB to sea level - 232'  
RKB - 89'

ELEVATIONS:

Ground \_\_\_\_\_ Ft.  
Derrick Floor \_\_\_\_\_ Ft.  
R K B \_\_\_\_\_ Ft.  
Top Csg. Flg. \_\_\_\_\_ Ft.  
Or Bench Mark \_\_\_\_\_ Ft.

COST DATA:

Est. Total Mud \_\_\_\_\_  
TOTAL PAID DRILLING CONTRACTOR:  
Footage \$ \_\_\_\_\_  
Day Work \$ \_\_\_\_\_

Measurement Taken From 321' RKB to seabed

CASING						CEMENT					
Date	Size	Weight	Condition & Grade	Amount Run	Where Set	No. Sacks	Kind	Depth Of Plug	Top In Annulus	Amount Pulled	Date Pulled
Jan. 28, 70	30"	309	1 - 1" Well	123	430	1070	Dalen Portland	389	Surface	NONE	
Jan. 30, 70	20"	133	1 - J-55	1679	1991.37	2980	"	1884	"	"	
Feb. 14, 70	13 3/8"	68	1 - J-55	5037	5342	3400	"	4700	"	"	
March 10, 70	9 5/8"	47	1 - N-80	9567.29	9863.29	2200	Class B	9572	-	"	
April 6, 70	7" liner	29	1 - N-80	1469	11117	170	Class B	11082	9950	"	

## 2/4 2X COMPLETION STRING

21 AUGUST 1974

<u>DESCRIPTION</u>	<u>LENGTH FEET</u>	<u>DEPTH FEET</u>
RKB to National Hanger Seat	300	RKB
National Hanger W/4½" S/L Pup	3.78	300.00
Crossover-4½" S/L By 4½" Vam	2.80	303.78
1 Joint-4½" 12.75 Lb/FT Vam TBG.	37.26	306.58
Pup-4½" Vam TBG	3.65	343.84
Flow Coupling-4½" Vam	4.05	347.49
Baker "F" Nipple (3.812")	1.18	351.54
Pup-4½" Vam TBG.	7.68	352.72
4 Joints 4½" 12.75 Lb/Ft N-80 Vam TBG.	148.21	360.40
Fluted Guide W/ S/L-Vam X-Overs	10.98	508.61
Flow Coupling 4½" Vam	9.55	519.59
Baker "B" Nipple (3.812) W/3.760 No Go	6.26	529.14
Flow Coupling 4½" Vam	4.06	535.40
Fluted Guide W/ S/L-Vam X-Overs	10.78	539.46
234 Jtsæ TBG.-4½" 12.75 Lb/Ft N-80 Vam	8778.81	550.24
Pup-4½" Vam	3.70	9329.05
Flow Coupling-4½" Vam	10.04	9332.75
Baker "L" Sliding Sleeve (3.688")	3.55	9342.79
1 Joint-4½" 12.75 Lb/Ft Vam TBG	38.59	9346.34
Flow Coupling-4½" Vam	10.02	9384-93
Baker "R" Nipple (3.688")	1.23	9394.95
Pup Joint-4½" Vam	9.64	9396.18
X-Over-3½" EU-4½" Vam	1.92	9405.82
Baker 4½" Model "G" Locator Sub	0.90	9407.74



## 2/4-2X COMPLETION STRING

21 AUGUST 1974

<u>DESCRIPTION</u>	<u>LENGTH FEET</u>	<u>DEPTH FEET</u>
Baker 4½" Seal Assembly	25.40	9408.64
X-Over, 3½" Vam-3½" EU	1.07	9434.04
1 Joint-3½" 9.2 Lb/Ft N-80 Vam	29.60	9435.11
Flow Coupling-3½" Vam	4.06	9464.71
Baker "R" Nipple-(2.75")	0.87	9468.77
Pup 3½" Vam	9.84	9469.64
Mule Shoe	1.28	9479.48
Bottom of Tailpipe		9480.76
Packer Set At 9415 Ft. RKB.		
String Spaced Out With Locator		
Sub 6.36' Above Packer.		

PERFORATING AND SQUEEZE RECORD

Lease 2/4 North Sea - Norway

Well 2X

Date	Size of Casting	Perforating		No. of Feet Perforated	No. of Holes	Size of Holes	Gun Diameter	Gun Type	Perforating Company
		To	From						
14.4.71	7"	10810	10720	90	2/ft.				Schlumberger
14.4.71	7"	10580	10475	105	2/ft.				Schlumberger
14.4.71	7"	<del>10475</del> 245	10350	<del>125</del> 105	2/ft.				Schlumberger
<u>Squeeze Job No. 1</u>					<u>Squeeze Job No. 2</u>				
Date:	March 26, 1971				Date:	April 1, 1971			
Reason:	Squeeze old perf.				Reason:	Squeeze old perf.			
Retainer:	Howco 'E-Z' at 9563'				Retainer:	Howco 'E-Z' at 9556'			
Cement:	200 sxs Class 'E'				Cement:	200 sxs Class 'E'			
<u>Squeeze Job No. 3</u>					<u>Squeeze Job No. 4</u>				
Date:	April 4, 1971				Date:	April 17, 1971			
Reason:	Squeeze old perf.				Reason:	Squeeze old perf.			
Retainer:	Howco 'E-Z' at 9705'				Retainer:	Howco 'E-Z' at 9740'			
Cement:	100 sxs Class 'E'				Cement:	300 sxs Class 'E'			

## INDIVIDUAL WELL COMPLETION RECORD

Lease EkofiskWell No. 2/4-2xAFE P- NW-5514

## LINE MEASUREMENTS OF WELL:

RKB to sea level - 232'  
RKB - 89'

## ELEVATIONS:

Ground \_\_\_\_\_ Ft.  
Derrick Floor \_\_\_\_\_ Ft.  
R K B \_\_\_\_\_ Ft.  
Top Csg. Fig. \_\_\_\_\_ Ft.  
Or Bench Mark \_\_\_\_\_ Ft.

## COST DATA:

Est. Total Mud \_\_\_\_\_

## TOTAL PAID DRILLING CONTRACTOR:

Footage \$ \_\_\_\_\_

Day Work \$ \_\_\_\_\_

Measurement Taken From 321' RKB to seabed

## CASING

## CEMENT

Date	Size	Weight	Condition & Grade	Amount Run	Where Set	No. Sacks	Kind	Depth Of Plug	Top In Annulus	Amount Pulled	Date Pulled
Jan. 28, 70	30"	309	1 - 1"well	123	430	1070	Dalen Portland	389	Surface	NONE	
Jan. 30, 70	20"	133	1 -J-55	1679	1991.37	2980	"	1884	"	"	
Feb. 14, 70	13 3/8"	68	1-J-55	5037	5342	3400	"	4700	"	"	
March 10, 70	9 5/8"	47	1-N-80	9567.29	9863.29	2200	Class <sub>B</sub>	9572	-	"	
April 6, 70	7"liner	29	1-N-80	1469	11117	170	Class <sub>B</sub>	11082	9950	"	

INDIVIDUAL WELL COMPLETION RECORD

Lease Ekofisk

Well No. 2/4-2x

AFE P- NW-5514

LINE MEASUREMENTS OF WELL:

RKB to sea level - 232'  
RKB - 89'

ELEVATIONS:

Ground \_\_\_\_\_ Ft.  
Derrick Floor \_\_\_\_\_ Ft.  
R K B \_\_\_\_\_ Ft.  
Top Csg. Fig. \_\_\_\_\_ Ft.  
Or Bench Mark \_\_\_\_\_ Ft.

COST DATA:

Est. Total Mud \_\_\_\_\_  
TOTAL PAID DRILLING CONTRACTOR:  
Footage \$ \_\_\_\_\_  
Day Work \$ \_\_\_\_\_

Measurement Taken From 321' RKB to seabed

CASING						CEMENT					
Date	Size	Weight	Condition & Grade	Amount Run	Where Set	No. Sacks	Kind	Depth Of Plug	Top In Annulus	Amount Pulled	Date Pulled
Jan. 28, 70	30"	309	1 - 1" Well	123	430	1070	Dalen Portland	389	Surface	NONE	
Jan. 30, 70	20"	133	1 - J-55	1679	1991.37	2980	"	1884	"	"	
Feb. 14, 70	13 3/8"	68	1 - J-55	5037	5342	3400	"	4700	"	"	
March 10, 70	9 5/8"	47	1 - N-80	9567.29	9863.29	2200	Class B	9572	-	"	
April 6, 70	7" liner	29	1 - N-80	1469	11117	170	Class B	11082	9950	"	



CEMENTING REPORT

Date 5/4/70 Well 2/4-2X Field Ekofisk Area Cont.Shell Country Nor wya

Mud Weight 14.3 Viscosity 45 Water Loss 4.0

Flow Line Temperature of Mud 73

Temperature Survey by Geoservice

Weight of Cement Slurry 15.6

Slurry Volume Cu.ft. 292.5

Volume left in Casing Cu.ft. 9

Calipered Hole Volume to T.O.C. \_\_\_\_\_ Actual T.O.C. \_\_\_\_\_

Time

Casing Started in Hole 4:00 A.M. Casing Landed 12:30

Circulation started 12:45 P.M. Casing Movement started \_\_\_\_\_

Cement mixing started 1:28 SPM or RPM \_\_\_\_\_ Stroke Length \_\_\_\_\_

Cement mixing finished 1:31 Displacement started 1:42

Displacement ended 2:43 Casing Movement ended \_\_\_\_\_

Displacement

Pump used to Pump Plug B.J. Pacemaker Liner Size and Stroke 4½" 8

Cycles per Min. 4 B p.m. Volume per Pump Cycle Volume displacement

Cycles required to displace Plug 224.87 Minutes to displace Plug Approx. 61

Pressure left on Plug 1300-2min. hrs WOC \_\_\_\_\_ Before Drill out \_\_\_\_\_

Remarks of Casing & Cement Job \_\_\_\_\_

\_\_\_\_\_  
\_\_\_\_\_  
\_\_\_\_\_  
\_\_\_\_\_  
\_\_\_\_\_

Personnel on Job \_\_\_\_\_



CEMENTING REPORT

Date Feb. 14, 70 Well 2/4-2X Field Ekofisk Area North sea Country Norway

Mud Weight 14.2 Viscosity 48 Water Loss 6.8

Flow Line Temperature of Mud 68°

Temperature Survey by None

Weight of Cement Slurry 14.1 and 15.6

Slurry Volume Cu.ft. 4888 cu.ft.

Volume left in Casing Cu.ft. 32 cu.ft.

Calipered Hole Volume to T.O.C. surface Actual T.O.C. surface

Time

Casing Started in Hole 10:30 p.m. Casing Landed 8:00 a.m.

Circulation started 8:30 Casing Movement started none

Cement mixing started 9:15 SPM or RPM \_\_\_\_\_ Stroke Length \_\_\_\_\_

Cement mixing finished 10:00am Displacement started 10:00 a.m.

Displacement ended 11:30 a.m. Casing Movement ended none

Displacement

Pump used to Pump Plug 6 3/4" x 18" Liner Size and Stroke two pumps

Cycles per Min. 75 per min. Volume per Pump Cycle .224 B.P.S.

Cycles required to displace Plug 3350 Minutes to displace Plug 60 mins.

Pressure left on Plug None hrs WOC \_\_\_\_\_ Before Drill out \_\_\_\_\_

Remarks of Casing & Cement Job Failed to bump plug over displace with  
two strokes, shut pumps down, bled press off head, float equipment failed  
to hold left log. Shut in for 1 hr bled press off. started backing off  
alnding string. Sub sea float equipment was used.

Personnel on Job \_\_\_\_\_

