

**Completion log**  
Scale 1500  
Well: 7120/12-4

**Simon Petroleum Technology**  
Post: 32.52 FT. Hole: 207.1  
Length: 32.52 FT. Interval: 207.1

**Geological Data:**  
Country: Norway  
Licence: 061  
Field: Nork Hydro/Statfjord/Conoco/Amoco  
Date Spudded: January 18, 1984  
Reached Total Depth: April 17, 1984  
Well Status: Plugged and abandoned, dry hole

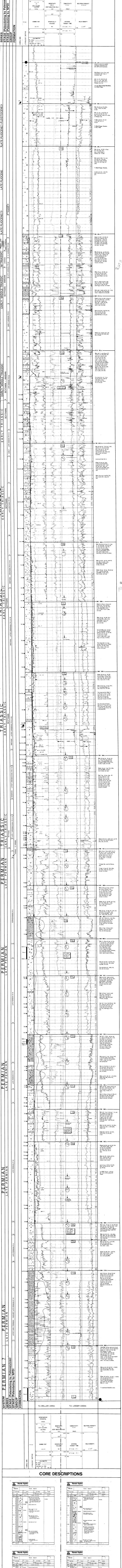
**Well Data:**  
Elevation K.B.: 23 m  
Water Depth: 218 m (MSL)  
Total Depth (Driller): 2202 m  
Formation at Total Depth: Late Permian (?) Sandstone and Siltstone

**Casing Records:**  
30" at 237 m  
20" at 652 m  
13 1/2" at 1185 m  
9 1/2" at -  
7" log at -

**Log Run Table:**

RF / SOMIC	LDT / CNL	SHOT	NGT	CBT	VEL / SURV
1 150 - 657.5m	1 237 - 664.5m	1 652 - 1972.5m	1 652 - 1972.5m	1 673 - 1196m	1 440 - 2195m
2 652 - 1197m	2 652 - 1198.5m	2 185 - 2200.5m	2 185 - 2200.5m	2 148 - 2167m	2 148 - 2167m
3 1185 - 2200.5m	3 1185 - 2200.5m			3 1453 - 1967m	3 1453 - 1967m
				4 1205 - 1447m	4 1205 - 1447m

**Legend:**  
Includes symbols for shale, sandstone, limestone, dolomite, calcarenite, etc.



**CORE DESCRIPTIONS**

**Norsk Hydro Core Report**

**Core 1** (Depth 2185 - 2195 m): Description of core sample, lithology, and observations.

**Core 2** (Depth 2175 - 2185 m): Description of core sample, lithology, and observations.

**Core 3** (Depth 2155 - 2165 m): Description of core sample, lithology, and observations.

**Core 4** (Depth 2135 - 2145 m): Description of core sample, lithology, and observations.

**Core 5** (Depth 2115 - 2125 m): Description of core sample, lithology, and observations.

**Core 6** (Depth 2095 - 2105 m): Description of core sample, lithology, and observations.

**Core 7** (Depth 2075 - 2085 m): Description of core sample, lithology, and observations.