

NPD – exploration drilling result

08/10/2007 Press Release 37/2007:BG Norge AS, operator of production licence 335, has completed drilling of wildcat well 7/7-4. The well is located close to the Norway/UK border, about 50 km north of the Ula field in the North Sea. The water depth at the well location is 83 m.

The purpose of the well was to prove hydrocarbons in the Paleocene Forties unit. 68 m of Forties reservoir sands were encountered at a depth of 2760 m in the well but they were water bearing.

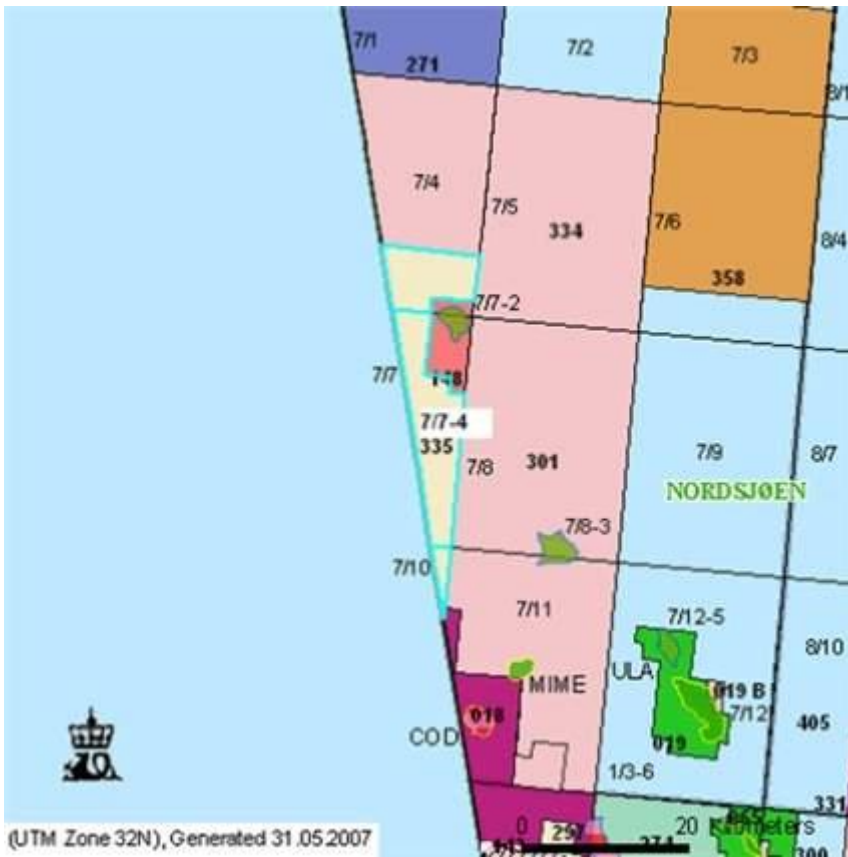
The well is the first exploration well drilled in production licence 335. The licence was awarded in APA 2004 (Awards in Predefined Areas). The well was drilled to a depth of 3033 m MD, and was terminated in the top Ekofisk Formation. The well will now be permanently plugged and abandoned.

Well 7/7-4 was drilled using the *Mærsk Guardian* drilling rig. This rig will now move to PL 274 to drill an exploration well operated by DONG.

The licensees in production licence 335 are:

BG Norge AS (operatør)	52 %
Lundin Norge	18 %
RWE DEA Norge AS	12 %
Bridge Energy AS	18%

See [Factpages](#) for more information about this wellbore.



(UTM Zone 32N), Generated 31.05.2007

7/7-4

23/08/2007 The Norwegian Petroleum Directorate has granted BG Norge AS a drilling permit for wellbore 7/7-4 in production license 335.

Wellbore 7/7-4 will be drilled from the drilling facility *Mærsk Guardian*.

The drilling program for wellbore 7/7- 4 applies to the drilling of a wildcat well. BG Norge AS is the operator with a 52 per cent ownership interest. The licensees are Talisman Energy Norge AS with 18 percent, Lundin Norway AS with 18 percent and RWE Dea AS with 12 percent. Production license 335 was awarded in the 2004 APA.

The acreage in this production license consists of parts of the blocks 7/4, 7/7 and block 7/10, which borders the British sector in the southern North Sea. Well 7/7-4 is the first exploration well in this production license. It is also the first well which will be operated by BG Norge AS on the Norwegian Shelf.

The drilling permit has been granted on the condition that the other permits and consents required by the authorities have been received before the drilling activity starts.

