

NPD – exploration drilling result

13/12/2007 Press release 47/2007:NOIL Energy ASA, operator of production licence 341, has concluded drilling of appraisal well 24/12-5 S. The well was drilled on the 24/12-3 S discovery in the central part of the North Sea.

As early as in 1996, oil was proven in well 24/12-3 S in the Heimdal formation in Paleocene rocks. Well 24/12-3 S is located about 20 km north of the discovery 15/3-1 S Gudrun, and about 20 km west of Balder.

The exploration target for well 24/12-5 S was to delimit the 24/12-3 S discovery. The well was dry. Good quality reservoir sandstone was encountered. The well will now be plugged and abandoned. This is the first well in production licence 341, which was awarded in the Awards in Predefined Areas in 2004 (APA 2004).

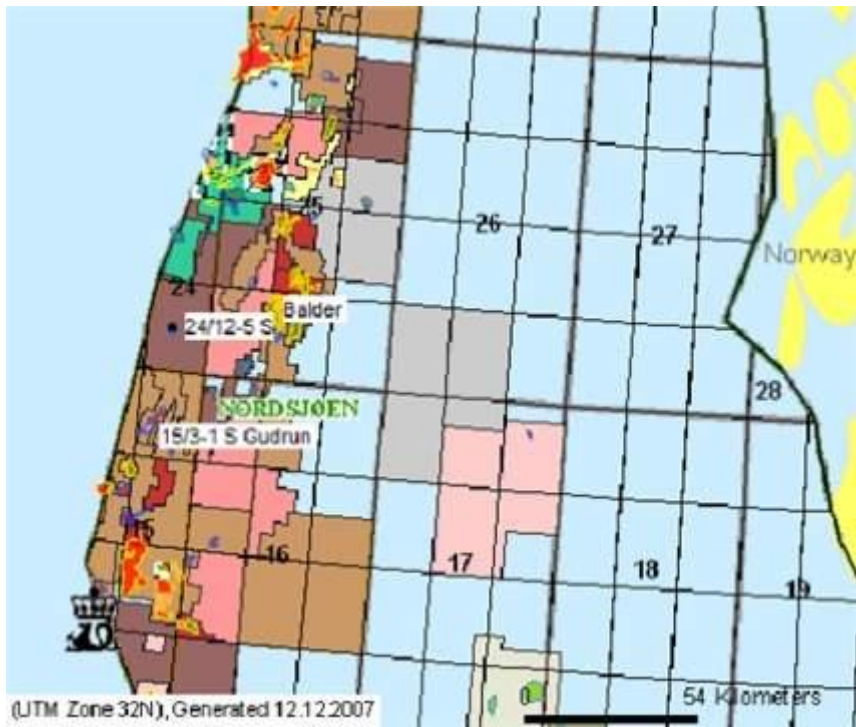
The well was drilled to a vertical depth of 2214 metres below the sea surface, and was concluded in the Heimdal formation in Paleocene rocks. Water depth at the site was 116 metres.

Well 24/12-5 S was drilled by the semi-submersible drilling facility *Bredford Dolphin*, which will now drill wildcat well 31/1-1 in production licence 311 operated by Marathon Petroleum Norge AS.

The licensees in production licence 341 are:

NOIL Energy ASA (subsidiary of Det norske oljeselskap ASA) (operator):	30 per cent
Revus Energy ASA:	30 per cent
Talisman Energy Norge AS:	30 per cent
PA Resources Norge AS:	10 per cent

See [Factpages](#) for more information about this wellbore.



24/12-5 S

04/10/2007 The Norwegian Petroleum Directorate (NPD) has granted Det Norske Oljeselskap (DNO) AS a drilling permit for wellbore 24/12-5 S.

The drilling program for wellbore 24/12-5 S relates to drilling of an appraisal well in production licence 341. DNO is the operator with a 30 per cent ownership interest. The other licensees are Revus and Talisman with 30 per cent each, and PA Resources with 10 per cent.

The area in this licence comprises block 24/12 and parts of blocks 24/9 and 24/11 right at the border to the British shelf, approx. 20 km north of the 15/3-1 S Gudrun discovery and about 20 km west of the Balder field in the central North Sea. PL 341 was awarded in connection with the awards in predefined areas in 2004. This is the first well to be drilled in this production licence, however, well 24/12-3 S was drilled on the flank of this structure in connection with a previous, now relinquished production licence.

Wellbore 24/12-5 S will be drilled from the *Bredford Dolphin* drilling facility at position 59° 06' 41.66" North and 01° 47' 21.25" East. The semi-submersible rig will come to the site from drilling activity in PL 305

This permit is contingent upon the operator obtaining all permits and consents required by other authorities before the drilling activity commences.

