

NPD – exploration drilling result

04/04/2013 The Norwegian Petroleum Directorate has granted Total E&P Norge AS a drilling permit for well 7225/3-2, cf. Section 8 of the Resource Management Regulations.

Wellbore 7225/3-2 will be drilled from the *Leiv Eiriksson* drilling facility at position 72 57` 05.17" north and 25 58` 23.34" east.

The drilling programme for well 7225/3-2 relates to drilling of an appraisal well in production licence 535. Total E&P Norge AS is the operator with an ownership interest of 40 per cent. The other licensees are North Energy ASA with 20 per cent, Det norske oljeselskap ASA with 20 per cent, Valiant Petroleum Norge AS with 13 per cent and Rocksource Exploration Norway AS with 7 per cent.

The production licence consists of blocks 7225/3 and 7226/1, and was awarded in the 20th licensing round in 2009.

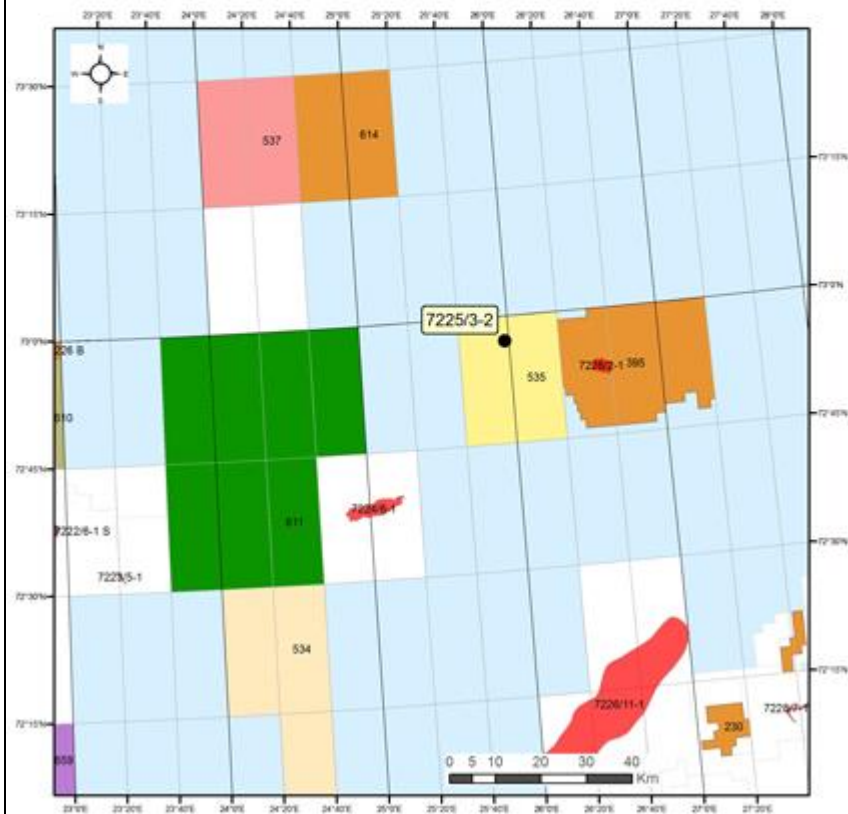
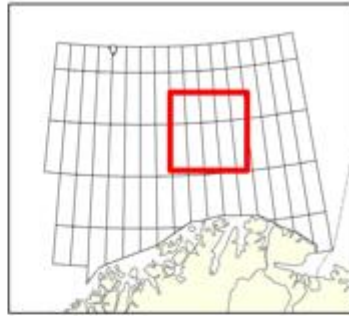
Wildcat well 7225/3-2 is the second exploration well in production licence 535.

The permit is contingent upon the operator securing all other permits and consents required by other authorities prior to starting drilling activities.

See [Factpages](#) for more information about this wellbore.



Avgrensningsbrønn/Well
7225/3-2
Utvinningsløyve/PL 535



7225/3-2

01/08/2013 Total E&P Norge AS, operator of production licence 535, is about to complete drilling of appraisal well 7225/3-2 on the 7225/3-1 gas discovery (Norvarg discovery).

The appraisal well was drilled about 5 km from the discovery well.

The discovery was proven in 2011, in reservoir rocks from the Middle Jurassic (Stø formation) and Late and Middle Triassic (Snadd, Kobbe and Havert formations). It was drilled about 275 kilometres north of Hammerfest in the Barents Sea. Before well 7225/3-2 was drilled, the operator's resource estimate for the discovery was between 10 and 50 billion Sm³ of recoverable gas.

The exploration target for the well was to delineate the 7225/3-1 gas discovery in reservoir rocks from the Middle Triassic (Kobbe formation). The secondary exploration target was to delineate the discovery in Middle Jurassic reservoir rocks (Stø formation).

The well encountered gas in the Kobbe formation and with reservoir rocks of varying quality. The reservoir has better porosity than the 7225/3-1 discovery, but similar permeability and productivity. Reservoir rocks in the Stø formation were aquiferous.

Two formation tests have been carried out in the upper and lower part of the reservoir. The maximum production rate was 175 000 Sm³ gas per flow day through a 52/64-inch nozzle opening. Extensive data acquisition and sampling have been carried out. Pressure sensors have been installed to observe the pressure development after the well was terminated.

The preliminary assessment of results from the appraisal well indicate a possible reduction in the resource estimates for Norvarg, compared with the original estimates that followed from the discovery well.

This is the second exploration well in [production licence 535](#). The licence was awarded in the 20th licensing round in 2009.

The appraisal well was drilled to a vertical depth of 2171 metres below the sea surface, and was terminated in the Klappmys formation in the Lower Triassic. Water depth is 383 metres. The well will now be permanently plugged and abandoned.

The well was drilled by the "Leiv Eiriksson" drilling facility, which will proceed to production licence 537 in the Barents Sea to drill wildcat well 7324/7-1 S, where OMV Norge AS is the operator.

