

● 2/11-6 S

MD SSTVD Strat GR [D] Formation pressure (formasjonstrykk) 800.0000

1:10000

1900 1874

2000 1974

2100 2074

2200 2174

2300 2274

2400 2374

2500 2474

2600 2574

2700 2674

2800 2774

2900 2874

3000 2974

3100 3074

3200 3174

3300 3274

3400 3374

3500 3474

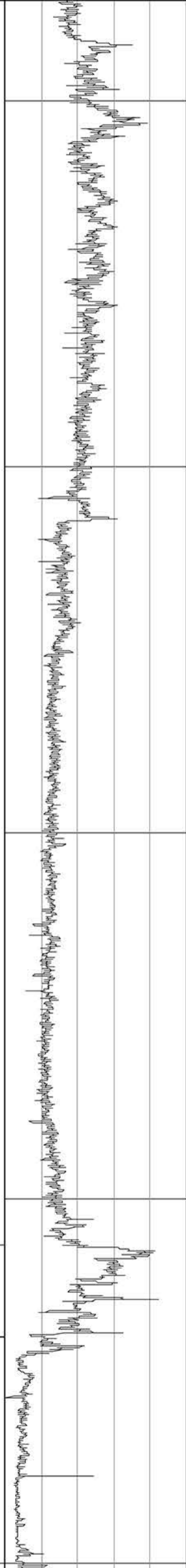
3600 3574

3700 3674

3800 3774

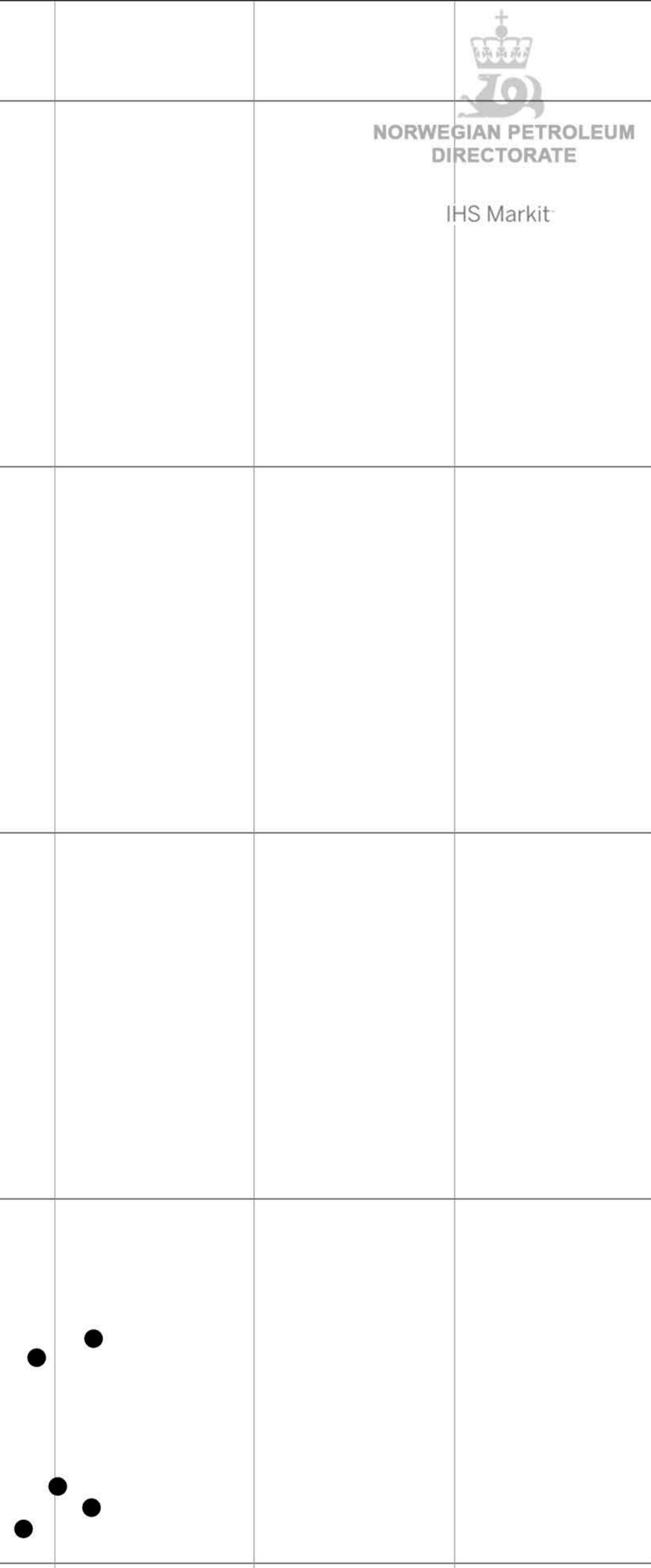
3900 3874

HORDALAND GP



● 200.0000

Formation pressure (formasjonstrykk) bar



NORWEGIAN PETROLEUM DIRECTORATE

IHS Markit