

**General information**

Field name	GULLFAKS
Factmaps in new window	<a href="#">link to map</a>
Current activity status	Producing
Discovery wellbore	<a href="#">34/10-1</a>
Discovery year.	1978
Main area	North sea
Main supply base	Mongstad
NPDID field	43686

**Picture****Discoveries included**

Discovery name
<a href="#">34/10-A-8</a>
<a href="#">34/10-34 Gullfaks Vest</a>
<a href="#">34/10-46 S</a>
<a href="#">34/10-1 Gullfaks</a>
<a href="#">34/10-45 S</a>
<a href="#">34/10-45 B</a>
<a href="#">34/10-46 A</a>

**Activity status – history**

Status	Status from	Status to
Producing	22.12.1986	
Approved for production	09.10.1981	21.12.1986

**Located in**

Block name	Prod. licence
34/10	<a href="#">050</a>
34/10	<a href="#">050 B</a>

**PDO - Plan for Development and Operations**

Date PDO approved	Description	Type
08.04.2020	Hywind Gullfaks	Changed PDO
14.06.2019	Shetland/Lista fase2	Changed PDO
14.06.2019	Endret PUD for Shetland/Lista fase 2	Changed PDO





03.12.2015	Endret PUD/Shet/List	Changed PDO
21.12.2005	Endret PUD Gullfaks	Changed PDO
03.02.2004	34/10-45B PUD fritak	PDO Exemption
27.02.2002	34/10-45S PUD fritak	PDO Exemption
03.11.1995	Gullfaks Lundefm.	PDO
15.01.1993	Gullfaks Vest, Kongen i Statsråd	PDO
01.06.1985	Gullfaks II	PDO
09.10.1981	Behandlet i Stortinget	PDO

**Ownership – full history**

Owner kind	Owner name	Ownership from date	Ownership to date
PRODUCTION LICENSE	<a href="#">050</a>	<a href="#">09.10.1981</a>	

**Operatorship – full history**

Company name	Operatorship from	Operatorship to
<a href="#">Equinor Energy AS</a>	<a href="#">16.05.2018</a>	
<a href="#">Statoil Petroleum AS</a>	<a href="#">01.11.2009</a>	<a href="#">15.05.2018</a>
<a href="#">StatoilHydro Petroleum AS</a>	<a href="#">01.01.2009</a>	<a href="#">31.10.2009</a>
<a href="#">StatoilHydro ASA</a>	<a href="#">01.10.2007</a>	<a href="#">31.12.2008</a>
<a href="#">Statoil ASA (old)</a>	<a href="#">10.05.2001</a>	<a href="#">30.09.2007</a>
<a href="#">Den norske stats oljeselskap a.s</a>	<a href="#">09.10.1981</a>	<a href="#">09.05.2001</a>

**Licensees – full history**

Company name	Nation code	Company share [%]	Date licensee from
<a href="#">Equinor Energy AS</a>	NO	51.000000	16.05.2018
<a href="#">Petoro AS</a>	NO	30.000000	16.05.2018
<a href="#">OMV (Norge) AS</a>	NO	19.000000	16.05.2018
<a href="#">Statoil Petroleum AS</a>	NO	51.000000	31.10.2013
<a href="#">Petoro AS</a>	NO	30.000000	31.10.2013
<a href="#">OMV (Norge) AS</a>	NO	19.000000	31.10.2013
<a href="#">Statoil Petroleum AS</a>	NO	70.000000	02.11.2009
<a href="#">Petoro AS</a>	NO	30.000000	02.11.2009
<a href="#">StatoilHydro Petroleum AS</a>	NO	70.000000	01.01.2009
<a href="#">Petoro AS</a>	NO	30.000000	01.01.2009
<a href="#">StatoilHydro ASA</a>	NO	61.000000	01.10.2007
<a href="#">Petoro AS</a>	NO	30.000000	01.10.2007
<a href="#">StatoilHydro Petroleum AS</a>	NO	9.000000	01.10.2007
<a href="#">Statoil ASA (old)</a>	NO	61.000000	01.01.2007
<a href="#">Petoro AS</a>	NO	30.000000	01.01.2007
<a href="#">Norsk Hydro Petroleum AS</a>	NO	9.000000	01.01.2007



Date licensee to
15.05.2018
15.05.2018
15.05.2018
30.10.2013
30.10.2013
01.11.2009
01.11.2009
31.12.2008
31.12.2008
31.12.2008
30.09.2007
30.09.2007
30.09.2007



<a href="#">Statoil ASA (old)</a>	NO	61.000000	17.06.2001
<a href="#">Petoro AS</a>	NO	30.000000	17.06.2001
<a href="#">Norsk Hydro Produksjon AS</a>	NO	9.000000	17.06.2001
<a href="#">Statoil ASA (old)</a>	NO	61.000000	01.06.2001
<a href="#">Statens Direkte Økonomiske Engasjement SDØE</a>	NO	30.000000	01.06.2001
<a href="#">Norsk Hydro Produksjon AS</a>	NO	9.000000	01.06.2001
<a href="#">Statens Direkte Økonomiske Engasjement SDØE</a>	NO	73.000000	10.05.2001
<a href="#">Statoil ASA (old)</a>	NO	18.000000	10.05.2001
<a href="#">Norsk Hydro Produksjon AS</a>	NO	9.000000	10.05.2001
<a href="#">Den norske stats oljeselskap a.s</a>	NO	91.000000	11.12.1999
<a href="#">Norsk Hydro Produksjon AS</a>	NO	9.000000	11.12.1999
<a href="#">Den norske stats oljeselskap a.s</a>	NO	85.000000	01.01.1985
<a href="#">Norsk Hydro Produksjon AS</a>	NO	9.000000	01.01.1985
<a href="#">Saga Petroleum ASA</a>	NO	6.000000	01.01.1985
<a href="#">Den norske stats oljeselskap a.s</a>	NO	85.000000	09.10.1981
<a href="#">Norsk Hydro Produksjon AS</a>	NO	9.000000	09.10.1981
<a href="#">Saga Petroleum ASA</a>	NO	6.000000	09.10.1981

**Norwegian Offshore Directorate - estimate for reserves (Norwegian share)**

Estimates for reserves do not take commercial agreements into consideration.

Valid date: 31.12.2023

Orig. recoverable oil [mill Sm3]	Orig. recoverable gas [bill Sm3]	Orig. recoverable NGL [mill tonn]	Orig. recoverable cond. [mill Sm3]	Orig. recoverable oil eq. [mill Sm3 o.e]
390.72	23.08	2.83	0.00	419.18

Remaining oil [mill Sm3]	Remaining gas [bill Sm3]	Remaining NGL [mill tonn]	Remaining cond. [mill Sm3]	Remaining oil eq. [mill Sm3 o.e]
12.95	0.00	0.00	0.00	12.95

Orig. inplace oil [mill Sm3]	Orig. inplace ass. liquid [mill Sm3]	Orig. inplace ass. gas [bill Sm3]	Orig. inplace free gas [bill Sm3]
745.00	0.00	84.00	0.00

**Description**



31.12.2006
31.12.2006
31.12.2006
16.06.2001
16.06.2001
16.06.2001
31.05.2001
31.05.2001
31.05.2001
09.05.2001
09.05.2001
10.12.1999
10.12.1999
10.12.1999
31.12.1984
31.12.1984
31.12.1984



Type	Text	Date updated
Development	Gullfaks is a field in the Tampen area in the northern part of the North Sea. The water depth is 130-220 metres. Gullfaks was discovered in 1978, and the plan for development and operation (PDO) for Gullfaks Phase I was approved in 1981. A PDO for Gullfaks Phase II was approved in 1985. The production started in 1986. The field has been developed with three integrated processing, drilling and accommodation facilities with concrete bases (Gullfaks A, B and C). Gullfaks B has a simplified processing plant with first stage separation. The Gullfaks facilities are involved in production and transport from Tordis, Vigdis, Snorre, Visund, Visund Sør and Brime. A PDO for Gullfaks Vest was approved in 1993, and for recovery from the Lunde Formation in 1995. An amended PDO for the Gullfaks field, covering prospects and small discoveries, which could be drilled and produced from existing facilities, was approved in 2005. Amendments to the Gullfaks PDO, covering Phase I and Phase II production from the Shetland/Lista deposit, were approved in 2015 and 2019, respectively. In 2020, an amended PDO for the development of the Hywind Tampen wind farm was approved. The wind farm consists of 11 floating turbines that started supplying electricity to the Gullfaks and Snorre platforms in 2022/2023. These fields are the first in the world receiving power from a floating wind farm.	13.12.2023
Reservoir	Gullfaks produces oil from Middle Jurassic sandstone in the Brent Group, and from Lower Jurassic and Upper Triassic sandstone in the Statfjord Group and Cook and Lunde Formations. Recoverable oil is also present in fractured carbonate and shale in the overlying Shetland Group and Lista Formation. The reservoirs are at depths of 1700-2000 metres in rotated fault blocks in the west and a structural horst (raised fault block) in the east, with a highly faulted area in between. Reservoir quality is generally good to very good in the Jurassic reservoirs within each fault compartment, but poor reservoir communication is a challenge for pressure maintenance.	13.12.2023
Recovery strategy	The drive mechanism for the main reservoirs is primarily water injection, with gas injection and water alternating gas injection (WAG) in some areas. Initially, the drainage strategy for the Shetland/Lista reservoir was depletion, but pressure support by water injection has now been implemented.	28.02.2023
Transport	Oil is exported from Gullfaks A and Gullfaks C via loading buoys onto tankers. Rich gas is transported by Statpipe for further processing at the Kårstø terminal.	28.02.2023
Status	Drilling of new wells on Gullfaks has been challenging for many years due to overpressured areas in the Shetland/Lista interval. Production from the Shetland/Lista reservoirs has gradually contributed to reduced overpressures and improved drillability. Additional wells are being drilled continuously from all platforms and well interventions are of vital importance to maintain production levels.	16.01.2025

### Investments (expected)

The operator's future investments related to the reserves from 2024 [mill NOK 2024-kroner]. The stated investment estimate has not been corrected for possible investment sharing.	36007
--	-------





**Investments (historical)**

	Investments [mill NOK nominal values]
Sum	115723
2023	4370
2022	3631
2021	3047
2020	2757
2019	3462
2018	3533
2017	2693
2016	3480
2015	3116
2014	3602
2013	3347
2012	3745
2011	2941
2010	2471
2009	2622
2008	2224
2007	1485
2006	1212
2005	1248
2004	1395
2003	1544
2002	1194
2001	1257
2000	1010
1999	1216
1998	1072
1997	1095
1996	857
1995	1073
1994	683
1993	1529
1992	1481
1991	1265
1990	1187
1989	3114
1988	4447
1987	8965
1986	9691
1985	7336



1984	5268
1983	2821
1982	880
1981	357

**Production , saleable**

	Month	Net - oil [mill Sm3]	Net - gas [bill Sm3]	Net - condensate [mill Sm3]	Net - NGL [mill Sm3]	Net - oil equivalents [mill Sm3]
Sum		378.707988	23.077293	0.000000	5.188282	406.973563
2024		1.157876	0.000000	0.000000	0.000000	1.157876
	1	0.107028	0.000000	0.000000	0.000000	0.107028
	2	0.104339	0.000000	0.000000	0.000000	0.104339
	3	0.116484	0.000000	0.000000	0.000000	0.116484
	4	0.109556	0.000000	0.000000	0.000000	0.109556
	5	0.061367	0.000000	0.000000	0.000000	0.061367
	6	0.084979	0.000000	0.000000	0.000000	0.084979
	7	0.104129	0.000000	0.000000	0.000000	0.104129
	8	0.119377	0.000000	0.000000	0.000000	0.119377
	9	0.100582	0.000000	0.000000	0.000000	0.100582
	10	0.129676	0.000000	0.000000	0.000000	0.129676
11	0.120359	0.000000	0.000000	0.000000	0.120359	
2023		1.331800	0.000000	0.000000	0.000000	1.331800
	1	0.118425	0.000000	0.000000	0.000000	0.118425
	2	0.106606	0.000000	0.000000	0.000000	0.106606
	3	0.094625	0.000000	0.000000	0.000000	0.094625
	4	0.115266	0.000000	0.000000	0.000000	0.115266
	5	0.111840	0.000000	0.000000	0.000000	0.111840
	6	0.090980	0.000000	0.000000	0.000000	0.090980
	7	0.102325	0.000000	0.000000	0.000000	0.102325
	8	0.119816	0.000000	0.000000	0.000000	0.119816
	9	0.108299	0.000000	0.000000	0.000000	0.108299
	10	0.116837	0.000000	0.000000	0.000000	0.116837
	11	0.129505	0.000000	0.000000	0.000000	0.129505
12	0.117276	0.000000	0.000000	0.000000	0.117276	
2022		1.628335	0.000000	0.000000	0.000000	1.628335
	1	0.138176	0.000000	0.000000	0.000000	0.138176
	2	0.124807	0.000000	0.000000	0.000000	0.124807
	3	0.142917	0.000000	0.000000	0.000000	0.142917
	4	0.130866	0.000000	0.000000	0.000000	0.130866
	5	0.154610	0.000000	0.000000	0.000000	0.154610
	6	0.136544	0.000000	0.000000	0.000000	0.136544
	7	0.145860	0.000000	0.000000	0.000000	0.145860
8	0.126364	0.000000	0.000000	0.000000	0.126364	



# Factpages

## Field

Printed: 10.2.2025 - 23:56

2022	9	0.133187	0.000000	0.000000	0.000000	0.133187
	10	0.141811	0.000000	0.000000	0.000000	0.141811
	11	0.117428	0.000000	0.000000	0.000000	0.117428
	12	0.135765	0.000000	0.000000	0.000000	0.135765
2021		1.736165	0.000000	0.000000	0.000000	1.736165
	1	0.176157	0.000000	0.000000	0.000000	0.176157
	2	0.142961	0.000000	0.000000	0.000000	0.142961
	3	0.169719	0.000000	0.000000	0.000000	0.169719
	4	0.146606	0.000000	0.000000	0.000000	0.146606
	5	0.162744	0.000000	0.000000	0.000000	0.162744
	6	0.134708	0.000000	0.000000	0.000000	0.134708
	7	0.150990	0.000000	0.000000	0.000000	0.150990
	8	0.148756	0.000000	0.000000	0.000000	0.148756
	9	0.122602	0.000000	0.000000	0.000000	0.122602
	10	0.118815	0.000000	0.000000	0.000000	0.118815
	11	0.133545	0.000000	0.000000	0.000000	0.133545
12	0.128562	0.000000	0.000000	0.000000	0.128562	
2020		2.408227	0.000000	0.000000	0.000000	2.408227
	1	0.236766	0.000000	0.000000	0.000000	0.236766
	2	0.240909	0.000000	0.000000	0.000000	0.240909
	3	0.226871	0.000000	0.000000	0.000000	0.226871
	4	0.216765	0.000000	0.000000	0.000000	0.216765
	5	0.230188	0.000000	0.000000	0.000000	0.230188
	6	0.174608	0.000000	0.000000	0.000000	0.174608
	7	0.204933	0.000000	0.000000	0.000000	0.204933
	8	0.237990	0.000000	0.000000	0.000000	0.237990
	9	0.157606	0.000000	0.000000	0.000000	0.157606
	10	0.105079	0.000000	0.000000	0.000000	0.105079
	11	0.191752	0.000000	0.000000	0.000000	0.191752
12	0.184760	0.000000	0.000000	0.000000	0.184760	
2019		2.754750	0.000000	0.000000	0.000000	2.754750
	1	0.261224	0.000000	0.000000	0.000000	0.261224
	2	0.240688	0.000000	0.000000	0.000000	0.240688
	3	0.247743	0.000000	0.000000	0.000000	0.247743
	4	0.240943	0.000000	0.000000	0.000000	0.240943
	5	0.164288	0.000000	0.000000	0.000000	0.164288
	6	0.217668	0.000000	0.000000	0.000000	0.217668
	7	0.224771	0.000000	0.000000	0.000000	0.224771
	8	0.235083	0.000000	0.000000	0.000000	0.235083
	9	0.199677	0.000000	0.000000	0.000000	0.199677
	10	0.234090	0.000000	0.000000	0.000000	0.234090
	11	0.237755	0.000000	0.000000	0.000000	0.237755
12	0.250820	0.000000	0.000000	0.000000	0.250820	



# Factpages

## Field

Printed: 10.2.2025 - 23:56

2018		2.675509	0.000000	0.000000	0.000000	2.675509
	1	0.174349	0.000000	0.000000	0.000000	0.174349
	2	0.176747	0.000000	0.000000	0.000000	0.176747
	3	0.195502	0.000000	0.000000	0.000000	0.195502
	4	0.219872	0.000000	0.000000	0.000000	0.219872
	5	0.236858	0.000000	0.000000	0.000000	0.236858
	6	0.219950	0.000000	0.000000	0.000000	0.219950
	7	0.229100	0.000000	0.000000	0.000000	0.229100
	8	0.219055	0.000000	0.000000	0.000000	0.219055
	9	0.206016	0.000000	0.000000	0.000000	0.206016
	10	0.275080	0.000000	0.000000	0.000000	0.275080
	11	0.274838	0.000000	0.000000	0.000000	0.274838
12	0.248142	0.000000	0.000000	0.000000	0.248142	
2017		2.043233	0.000000	0.000000	0.000000	2.043233
	1	0.179468	0.000000	0.000000	0.000000	0.179468
	2	0.165785	0.000000	0.000000	0.000000	0.165785
	3	0.180159	0.000000	0.000000	0.000000	0.180159
	4	0.168056	0.000000	0.000000	0.000000	0.168056
	5	0.158250	0.000000	0.000000	0.000000	0.158250
	6	0.103106	0.000000	0.000000	0.000000	0.103106
	7	0.164085	0.000000	0.000000	0.000000	0.164085
	8	0.214497	0.000000	0.000000	0.000000	0.214497
	9	0.183215	0.000000	0.000000	0.000000	0.183215
	10	0.187564	0.000000	0.000000	0.000000	0.187564
	11	0.160482	0.000000	0.000000	0.000000	0.160482
12	0.178566	0.000000	0.000000	0.000000	0.178566	
2016		2.279256	0.000000	0.000000	0.000000	2.279256
	1	0.193683	0.000000	0.000000	0.000000	0.193683
	2	0.182100	0.000000	0.000000	0.000000	0.182100
	3	0.191755	0.000000	0.000000	0.000000	0.191755
	4	0.225758	0.000000	0.000000	0.000000	0.225758
	5	0.221373	0.000000	0.000000	0.000000	0.221373
	6	0.205267	0.000000	0.000000	0.000000	0.205267
	7	0.183459	0.000000	0.000000	0.000000	0.183459
	8	0.170180	0.000000	0.000000	0.000000	0.170180
	9	0.147316	0.000000	0.000000	0.000000	0.147316
	10	0.194916	0.000000	0.000000	0.000000	0.194916
	11	0.183285	0.000000	0.000000	0.000000	0.183285
12	0.180164	0.000000	0.000000	0.000000	0.180164	
2015		2.098276	0.000000	0.000000	0.000000	2.098276
	1	0.192463	0.000000	0.000000	0.000000	0.192463
	2	0.166685	0.000000	0.000000	0.000000	0.166685
	3	0.191593	0.000000	0.000000	0.000000	0.191593



# Factpages

## Field

Printed: 10.2.2025 - 23:56

2015	4	0.175503	0.000000	0.000000	0.000000	0.175503
	5	0.186863	0.000000	0.000000	0.000000	0.186863
	6	0.147286	0.000000	0.000000	0.000000	0.147286
	7	0.177844	0.000000	0.000000	0.000000	0.177844
	8	0.140629	0.000000	0.000000	0.000000	0.140629
	9	0.148419	0.000000	0.000000	0.000000	0.148419
	10	0.187789	0.000000	0.000000	0.000000	0.187789
	11	0.181951	0.000000	0.000000	0.000000	0.181951
	12	0.201251	0.000000	0.000000	0.000000	0.201251
2014		2.136387	0.000000	0.000000	0.000000	2.136387
	1	0.156781	0.000000	0.000000	0.000000	0.156781
	2	0.151639	0.000000	0.000000	0.000000	0.151639
	3	0.172417	0.000000	0.000000	0.000000	0.172417
	4	0.194246	0.000000	0.000000	0.000000	0.194246
	5	0.181400	0.000000	0.000000	0.000000	0.181400
	6	0.129168	0.000000	0.000000	0.000000	0.129168
	7	0.189458	0.000000	0.000000	0.000000	0.189458
	8	0.198460	0.000000	0.000000	0.000000	0.198460
	9	0.175919	0.000000	0.000000	0.000000	0.175919
	10	0.198513	0.000000	0.000000	0.000000	0.198513
	11	0.185506	0.000000	0.000000	0.000000	0.185506
12	0.202880	0.000000	0.000000	0.000000	0.202880	
2013		2.568067	0.000000	0.000000	0.000000	2.568067
	1	0.217184	0.000000	0.000000	0.000000	0.217184
	2	0.205590	0.000000	0.000000	0.000000	0.205590
	3	0.207757	0.000000	0.000000	0.000000	0.207757
	4	0.210863	0.000000	0.000000	0.000000	0.210863
	5	0.229815	0.000000	0.000000	0.000000	0.229815
	6	0.227693	0.000000	0.000000	0.000000	0.227693
	7	0.224663	0.000000	0.000000	0.000000	0.224663
	8	0.236885	0.000000	0.000000	0.000000	0.236885
	9	0.233521	0.000000	0.000000	0.000000	0.233521
	10	0.209406	0.000000	0.000000	0.000000	0.209406
	11	0.190397	0.000000	0.000000	0.000000	0.190397
12	0.174293	0.000000	0.000000	0.000000	0.174293	
2012		2.537106	0.000000	0.000000	0.000000	2.537106
	1	0.238281	0.000000	0.000000	0.000000	0.238281
	2	0.216306	0.000000	0.000000	0.000000	0.216306
	3	0.226270	0.000000	0.000000	0.000000	0.226270
	4	0.220238	0.000000	0.000000	0.000000	0.220238
	5	0.217304	0.000000	0.000000	0.000000	0.217304
	6	0.195186	0.000000	0.000000	0.000000	0.195186
7	0.208257	0.000000	0.000000	0.000000	0.208257	



# Factpages

## Field

Printed: 10.2.2025 - 23:56

2012	8	0.245845	0.000000	0.000000	0.000000	0.245845
	9	0.256519	0.000000	0.000000	0.000000	0.256519
	10	0.159358	0.000000	0.000000	0.000000	0.159358
	11	0.191458	0.000000	0.000000	0.000000	0.191458
	12	0.162084	0.000000	0.000000	0.000000	0.162084
2011		2.663029	0.000000	0.000000	0.000000	2.663029
	1	0.199730	0.000000	0.000000	0.000000	0.199730
	2	0.199221	0.000000	0.000000	0.000000	0.199221
	3	0.223626	0.000000	0.000000	0.000000	0.223626
	4	0.245467	0.000000	0.000000	0.000000	0.245467
	5	0.140694	0.000000	0.000000	0.000000	0.140694
	6	0.183530	0.000000	0.000000	0.000000	0.183530
	7	0.223533	0.000000	0.000000	0.000000	0.223533
	8	0.238175	0.000000	0.000000	0.000000	0.238175
	9	0.251239	0.000000	0.000000	0.000000	0.251239
	10	0.238266	0.000000	0.000000	0.000000	0.238266
	11	0.254211	0.000000	0.000000	0.000000	0.254211
12	0.265337	0.000000	0.000000	0.000000	0.265337	
2010		3.959405	0.089829	0.000000	0.029930	4.079164
	1	0.377456	0.001283	0.000000	0.000358	0.379097
	2	0.348753	0.002197	0.000000	0.000687	0.351637
	3	0.386868	0.005158	0.000000	0.001662	0.393688
	4	0.360640	0.000155	0.000000	0.000054	0.360849
	5	0.325246	0.017991	0.000000	0.006292	0.349529
	6	0.235985	0.022476	0.000000	0.007935	0.266396
	7	0.313678	0.017986	0.000000	0.006167	0.337831
	8	0.348047	0.001017	0.000000	0.000318	0.349382
	9	0.369390	0.021566	0.000000	0.006457	0.397413
	10	0.352170	0.000000	0.000000	0.000000	0.352170
	11	0.346308	0.000000	0.000000	0.000000	0.346308
12	0.194864	0.000000	0.000000	0.000000	0.194864	
2009		4.689915	0.227613	0.000000	0.072721	4.990249
	1	0.452786	0.013838	0.000000	0.004539	0.471163
	2	0.405538	0.009870	0.000000	0.003218	0.418626
	3	0.443977	0.014914	0.000000	0.005076	0.463967
	4	0.397897	0.024291	0.000000	0.007849	0.430037
	5	0.314293	0.046799	0.000000	0.015297	0.376389
	6	0.355392	0.034478	0.000000	0.011527	0.401397
	7	0.417413	0.011347	0.000000	0.003480	0.432240
	8	0.402086	0.006124	0.000000	0.001968	0.410178
	9	0.417539	0.010283	0.000000	0.003008	0.430830
	10	0.372259	0.020004	0.000000	0.005791	0.398054
11	0.352763	0.022098	0.000000	0.006708	0.381569	



# Factpages

## Field

Printed: 10.2.2025 - 23:56

2009	12	0.357972	0.013567	0.000000	0.004260	0.375799
2008		5.305486	0.333240	0.000000	0.322071	5.960797
	1	0.464948	0.024479	0.000000	0.032460	0.521887
	2	0.447586	0.039230	0.000000	0.032101	0.518917
	3	0.428705	0.036628	0.000000	0.039900	0.505233
	4	0.451996	0.021295	0.000000	0.027122	0.500413
	5	0.478124	0.032643	0.000000	0.038232	0.548999
	6	0.235302	0.010584	0.000000	0.023378	0.269264
	7	0.490098	0.038499	0.000000	0.034365	0.562962
	8	0.474554	0.042287	0.000000	0.035654	0.552495
	9	0.476680	0.042596	0.000000	0.034521	0.553797
	10	0.443677	0.012950	0.000000	0.014295	0.470922
	11	0.448325	0.020954	0.000000	0.006661	0.475940
12	0.465491	0.011095	0.000000	0.003382	0.479968	
2007		5.560263	0.236004	0.000000	0.257056	6.053323
	1	0.484017	0.035577	0.000000	0.026270	0.545864
	2	0.424618	0.032993	0.000000	0.019158	0.476769
	3	0.480513	0.027597	0.000000	0.020452	0.528562
	4	0.474605	0.026784	0.000000	0.021918	0.523307
	5	0.482603	0.000000	0.000000	0.000000	0.482603
	6	0.465129	0.005417	0.000000	0.027923	0.498469
	7	0.473246	0.044143	0.000000	0.027272	0.544661
	8	0.494740	0.034141	0.000000	0.030045	0.558926
	9	0.404319	0.000000	0.000000	0.000000	0.404319
	10	0.446256	0.005789	0.000000	0.015470	0.467515
	11	0.455145	0.013429	0.000000	0.035138	0.503712
12	0.475072	0.010134	0.000000	0.033410	0.518616	
2006		6.429326	0.492866	0.000000	0.195578	7.117770
	1	0.700569	0.056187	0.000000	0.028246	0.785002
	2	0.543753	0.047737	0.000000	0.019023	0.610513
	3	0.624233	0.048260	0.000000	0.023042	0.695535
	4	0.564299	0.039392	0.000000	0.019104	0.622795
	5	0.610838	0.037966	0.000000	0.014815	0.663619
	6	0.579764	0.049164	0.000000	0.011286	0.640214
	7	0.574864	0.048085	0.000000	0.016365	0.639314
	8	0.532690	0.042102	0.000000	0.015436	0.590228
	9	0.345429	0.052298	0.000000	0.010350	0.408077
	10	0.438529	0.038398	0.000000	0.014127	0.491054
	11	0.474273	0.033277	0.000000	0.023784	0.531334
12	0.440085	0.000000	0.000000	0.000000	0.440085	
2005		8.346418	0.447541	0.000000	0.217165	9.011124
	1	0.806896	0.068820	0.000000	0.026345	0.902061



# Factpages

## Field

Printed: 10.2.2025 - 23:56

2005	2	0.705790	0.054212	0.000000	0.019009	0.779011
	3	0.759761	0.059382	0.000000	0.022335	0.841478
	4	0.726365	0.033100	0.000000	0.014323	0.773788
	5	0.733808	0.010250	0.000000	0.007758	0.751816
	6	0.690944	0.000000	0.000000	0.000000	0.690944
	7	0.556871	0.000000	0.000000	0.000000	0.556871
	8	0.578384	0.011922	0.000000	0.024691	0.614997
	9	0.699048	0.042873	0.000000	0.023971	0.765892
	10	0.739149	0.060512	0.000000	0.024718	0.824379
	11	0.682572	0.053026	0.000000	0.027382	0.762980
	12	0.666830	0.053444	0.000000	0.026633	0.746907
	2004		9.712272	0.578601	0.000000	0.232312
1		0.891511	0.056277	0.000000	0.024725	0.972513
2		0.818576	0.060625	0.000000	0.024358	0.903559
3		0.833091	0.066074	0.000000	0.027135	0.926300
4		0.808351	0.019061	0.000000	0.008094	0.835506
5		0.834747	0.009619	0.000000	0.007652	0.852018
6		0.803508	0.001006	0.000000	0.002020	0.806534
7		0.819115	0.052760	0.000000	0.027948	0.899823
8		0.753752	0.017818	0.000000	0.011197	0.782767
9		0.804056	0.097707	0.000000	0.018139	0.919902
10		0.852370	0.069446	0.000000	0.029960	0.951776
11		0.748375	0.063108	0.000000	0.027857	0.839340
12	0.744820	0.065100	0.000000	0.023227	0.833147	
2003		9.506187	0.621735	0.000000	0.252403	10.380325
	1	0.753822	0.059102	0.000000	0.024896	0.837820
	2	0.813219	0.051610	0.000000	0.022819	0.887648
	3	0.764992	0.056590	0.000000	0.023242	0.844824
	4	0.582724	0.043474	0.000000	0.021411	0.647609
	5	0.838492	0.066187	0.000000	0.028602	0.933281
	6	0.793871	0.009947	0.000000	0.009175	0.812993
	7	0.802356	0.050595	0.000000	0.029693	0.882644
	8	0.855368	0.008261	0.000000	0.009109	0.872738
	9	0.831542	-0.000628	0.000000	0.001469	0.832383
	10	0.689342	0.141083	0.000000	0.038987	0.869412
	11	0.855608	0.077010	0.000000	0.017052	0.949670
12	0.924851	0.058504	0.000000	0.025948	1.009303	
2002		9.210722	0.605040	0.000000	0.162583	9.978345
	1	0.854288	0.070880	0.000000	0.020254	0.945422
	2	0.789873	0.057189	0.000000	0.014088	0.861150
	3	0.791472	0.039339	0.000000	0.011487	0.842298
	4	0.792723	0.035033	0.000000	0.011427	0.839183
	5	0.801991	0.054161	0.000000	0.015522	0.871674





# Factpages

## Field

Printed: 10.2.2025 - 23:56

2002	6	0.811281	0.078134	0.000000	0.020158	0.909573
	7	0.788875	0.065577	0.000000	0.020013	0.874465
	8	0.776416	0.025447	0.000000	0.006516	0.808379
	9	0.476772	0.035663	0.000000	0.007523	0.519958
	10	0.739222	0.045318	0.000000	0.013119	0.797659
	11	0.801579	0.050909	0.000000	0.008693	0.861181
	12	0.786230	0.047390	0.000000	0.013783	0.847403
2001		10.531939	0.827120	0.000000	0.196686	11.555745
	1	0.984118	0.088672	0.000000	0.025520	1.098310
	2	0.907984	0.066027	0.000000	0.018471	0.992482
	3	0.945165	0.074599	0.000000	0.020016	1.039780
	4	0.959673	0.079292	0.000000	0.021989	1.060954
	5	0.694518	0.066898	0.000000	0.018254	0.779670
	6	0.903375	0.062125	0.000000	0.011328	0.976828
	7	0.882908	0.044668	0.000000	0.006918	0.934494
	8	0.819655	0.074836	0.000000	0.015633	0.910124
	9	0.877228	0.069432	0.000000	0.006131	0.952791
	10	0.924892	0.069200	0.000000	0.014842	1.008934
	11	0.710493	0.073529	0.000000	0.018878	0.802900
	12	0.921930	0.057842	0.000000	0.018706	0.998478
2000		13.272057	0.901957	0.000000	0.161710	14.335724
	1	1.319050	0.067860	0.000000	0.007127	1.394037
	2	1.270008	0.082718	0.000000	0.011878	1.364604
	3	1.197219	0.080829	0.000000	0.008678	1.286726
	4	0.930936	0.106160	0.000000	0.016778	1.053874
	5	1.251618	0.054418	0.000000	0.008130	1.314166
	6	1.248235	0.034699	0.000000	0.005693	1.288627
	7	1.245116	0.079133	0.000000	0.012804	1.337053
	8	0.730588	0.040729	0.000000	0.005561	0.776878
	9	1.097366	0.073710	0.000000	0.015877	1.186953
	10	0.853575	0.079160	0.000000	0.016770	0.949505
	11	1.054881	0.074637	0.000000	0.018487	1.148005
	12	1.073465	0.127904	0.000000	0.033927	1.235296
1999		17.277185	0.968084	0.000000	0.164634	18.409903
	1	1.724155	0.095036	0.000000	0.010474	1.829665
	2	1.466508	0.103814	0.000000	0.019253	1.589575
	3	1.600432	0.054443	0.000000	0.008129	1.663004
	4	1.577793	0.098870	0.000000	0.017865	1.694528
	5	1.612470	0.106267	0.000000	0.019949	1.738686
	6	1.507689	0.103073	0.000000	0.018229	1.628991
	7	1.442029	0.032584	0.000000	0.004611	1.479224
	8	1.531148	0.092805	0.000000	0.014640	1.638593
	9	0.822856	0.022835	0.000000	0.005132	0.850823



# Factpages

## Field

Printed: 10.2.2025 - 23:56

1999	10	1.143522	0.079456	0.000000	0.013752	1.236730
	11	1.392594	0.084036	0.000000	0.011884	1.488514
	12	1.455989	0.094865	0.000000	0.020716	1.571570
1998		19.854842	1.455468	0.000000	0.243637	21.553947
	1	1.889023	0.139148	0.000000	0.029986	2.058157
	2	1.787998	0.128279	0.000000	0.024389	1.940666
	3	1.830853	0.139443	0.000000	0.027293	1.997589
	4	1.706645	0.124828	0.000000	0.014059	1.845532
	5	1.688430	0.131460	0.000000	0.018063	1.837953
	6	1.123375	0.035191	0.000000	0.006345	1.164911
	7	1.777650	0.097003	0.000000	0.014009	1.888662
	8	1.121137	0.022504	0.000000	0.001700	1.145341
	9	1.687200	0.145215	0.000000	0.019736	1.852151
	10	1.760784	0.177804	0.000000	0.031683	1.970271
	11	1.748908	0.166683	0.000000	0.032272	1.947863
12	1.732839	0.147910	0.000000	0.024102	1.904851	
1997		24.121289	1.684111	0.000000	0.189060	25.994460
	1	2.339717	0.162429	0.000000	0.017642	2.519788
	2	1.922269	0.120055	0.000000	0.009840	2.052164
	3	2.072470	0.133072	0.000000	0.014397	2.219939
	4	2.275333	0.149193	0.000000	0.022934	2.447460
	5	2.294919	0.156597	0.000000	0.027546	2.479062
	6	2.192283	0.140502	0.000000	0.011259	2.344044
	7	2.250359	0.153570	0.000000	0.013973	2.417902
	8	1.781939	0.135748	0.000000	0.011554	1.929241
	9	0.943886	0.031958	0.000000	0.006385	0.982229
	10	2.098505	0.158668	0.000000	0.015257	2.272430
	11	1.982783	0.169097	0.000000	0.017974	2.169854
12	1.966826	0.173222	0.000000	0.020299	2.160347	
1996		25.445015	1.772801	0.000000	0.201980	27.419796
	1	2.283100	0.140226	0.000000	0.019078	2.442404
	2	2.185638	0.153396	0.000000	0.018578	2.357612
	3	2.286704	0.150567	0.000000	0.016996	2.454267
	4	2.286078	0.160652	0.000000	0.017772	2.464502
	5	2.087206	0.153480	0.000000	0.017331	2.258017
	6	2.224703	0.149389	0.000000	0.016267	2.390359
	7	2.265623	0.160931	0.000000	0.016794	2.443348
	8	2.171645	0.190955	0.000000	0.018148	2.380748
	9	2.049740	0.131116	0.000000	0.012586	2.193442
	10	1.104202	0.098234	0.000000	0.014789	1.217225
	11	2.127484	0.137463	0.000000	0.017128	2.282075
12	2.372892	0.146392	0.000000	0.016513	2.535797	



# Factpages

## Field

Printed: 10.2.2025 - 23:56

1995		28.090946	1.873128	0.000000	0.378054	30.342128
	1	2.577878	0.162398	0.000000	0.033775	2.774051
	2	2.129869	0.143372	0.000000	0.030309	2.303550
	3	2.448173	0.172827	0.000000	0.034829	2.655829
	4	2.454159	0.163098	0.000000	0.034479	2.651736
	5	2.568676	0.164710	0.000000	0.037282	2.770668
	6	2.418309	0.145138	0.000000	0.032708	2.596155
	7	2.578281	0.162541	0.000000	0.035157	2.775979
	8	1.533779	0.109498	0.000000	0.018767	1.662044
	9	2.292722	0.136720	0.000000	0.025949	2.455391
	10	2.481526	0.166697	0.000000	0.034553	2.682776
	11	2.231826	0.174251	0.000000	0.030578	2.436655
12	2.375748	0.171878	0.000000	0.029668	2.577294	
1994		30.743270	2.016501	0.000000	0.448404	33.208175
	1	2.639381	0.208701	0.000000	0.040590	2.888672
	2	2.435542	0.193923	0.000000	0.037534	2.666999
	3	2.697165	0.194715	0.000000	0.047277	2.939157
	4	2.702303	0.212983	0.000000	0.042284	2.957570
	5	2.794567	0.214780	0.000000	0.045348	3.054695
	6	2.650027	0.132570	0.000000	0.037370	2.819967
	7	2.716420	0.148065	0.000000	0.038189	2.902674
	8	1.394659	0.078487	0.000000	0.018567	1.491713
	9	2.598876	0.162946	0.000000	0.034840	2.796662
	10	2.804925	0.160034	0.000000	0.036221	3.001180
	11	2.619850	0.154679	0.000000	0.035669	2.810198
12	2.689555	0.154618	0.000000	0.034515	2.878688	
1993		28.676620	2.069095	0.000000	0.494592	31.240307
	1	2.178990	0.135030	0.000000	0.018644	2.332664
	2	1.940956	0.126719	0.000000	0.028455	2.096130
	3	2.519658	0.165743	0.000000	0.036855	2.722256
	4	2.464480	0.172448	0.000000	0.035464	2.672392
	5	2.522194	0.191520	0.000000	0.040479	2.754193
	6	1.617221	0.068290	0.000000	0.016029	1.701540
	7	2.590289	0.182279	0.000000	0.112550	2.885118
	8	2.583025	0.198637	0.000000	0.042378	2.824040
	9	2.521409	0.205370	0.000000	0.045754	2.772533
	10	2.609864	0.217957	0.000000	0.043935	2.871756
	11	2.565967	0.205404	0.000000	0.035526	2.806897
12	2.562567	0.199698	0.000000	0.038523	2.800788	
1992		25.027100	1.799395	0.000000	0.337307	27.163802
	1	2.142760	0.154865	0.000000	0.019412	2.317037
	2	1.939938	0.115160	0.000000	0.023738	2.078836
	3	2.065510	0.128525	0.000000	0.022857	2.216892



# Factpages

## Field

Printed: 10.2.2025 - 23:56

1992	4	1.996363	0.152935	0.000000	0.032393	2.181691
	5	2.123578	0.166413	0.000000	0.032131	2.322122
	6	1.614487	0.127879	0.000000	0.025057	1.767423
	7	2.059234	0.152320	0.000000	0.029045	2.240599
	8	2.114273	0.143447	0.000000	0.024595	2.282315
	9	2.059281	0.140404	0.000000	0.013498	2.213183
	10	2.216684	0.179747	0.000000	0.033675	2.430106
	11	2.272275	0.173685	0.000000	0.032402	2.478362
	12	2.422717	0.164015	0.000000	0.048504	2.635236
1991		19.906698	1.309804	0.000000	0.237480	21.453982
	1	1.576299	0.114173	0.000000	0.010093	1.700565
	2	1.416917	0.108776	0.000000	0.016342	1.542035
	3	1.481480	0.094442	0.000000	0.014267	1.590189
	4	1.547226	0.084445	0.000000	0.016269	1.647940
	5	1.774038	0.103896	0.000000	0.019562	1.897496
	6	1.743148	0.137300	0.000000	0.022040	1.902488
	7	1.798557	0.134750	0.000000	0.024696	1.958003
	8	1.040535	0.019238	0.000000	0.003782	1.063555
	9	1.849955	0.103963	0.000000	0.022104	1.976022
	10	1.970256	0.138448	0.000000	0.028037	2.136741
	11	1.796536	0.137182	0.000000	0.026646	1.960364
12	1.911751	0.133191	0.000000	0.033642	2.078584	
1990		14.829574	1.004890	0.000000	0.144990	15.979454
	1	1.209840	0.072035	0.000000	0.004733	1.286608
	2	1.079693	0.070384	0.000000	0.008067	1.158144
	3	1.220765	0.076192	0.000000	0.009779	1.306736
	4	1.212633	0.077547	0.000000	0.010274	1.300454
	5	1.318139	0.095865	0.000000	0.013096	1.427100
	6	1.308004	0.094893	0.000000	0.012730	1.415627
	7	1.049181	0.079617	0.000000	0.010822	1.139620
	8	0.821481	0.053470	0.000000	0.007573	0.882524
	9	1.278301	0.085608	0.000000	0.013622	1.377531
	10	1.452338	0.095212	0.000000	0.015210	1.562760
	11	1.431529	0.099298	0.000000	0.016045	1.546872
12	1.447670	0.104769	0.000000	0.023039	1.575478	
1989		15.489959	1.059438	0.000000	0.151071	16.700468
	1	1.214461	0.092042	0.000000	0.009915	1.316418
	2	1.069855	0.072892	0.000000	0.011651	1.154398
	3	1.396699	0.103728	0.000000	0.016815	1.517242
	4	1.399138	0.098136	0.000000	0.014049	1.511323
	5	1.372246	0.089475	0.000000	0.013731	1.475452
	6	1.055413	0.072054	0.000000	0.006140	1.133607
7	1.353897	0.093214	0.000000	0.020119	1.467230	



# Factpages

Field

Printed: 10.2.2025 - 23:56

1989	8	1.371310	0.098378	0.000000	0.014048	1.483736
	9	1.337567	0.082664	0.000000	0.010281	1.430512
	10	1.359269	0.089983	0.000000	0.011995	1.461247
	11	1.374231	0.096972	0.000000	0.012742	1.483945
	12	1.185873	0.069900	0.000000	0.009585	1.265358
1988		8.639010	0.581511	0.000000	0.080098	9.300619
	1	0.541375	0.032664	0.000000	0.002523	0.576562
	2	0.533522	0.034591	0.000000	0.003725	0.571838
	3	0.731363	0.047039	0.000000	0.005198	0.783600
	4	0.719825	0.046794	0.000000	0.005764	0.772383
	5	0.542265	0.029026	0.000000	0.003312	0.574603
	6	0.365933	0.020160	0.000000	0.002361	0.388454
	7	0.821212	0.052406	0.000000	0.007918	0.881536
	8	0.891063	0.056438	0.000000	0.008045	0.955546
	9	0.922027	0.072132	0.000000	0.010845	1.005004
	10	1.042717	0.077059	0.000000	0.009120	1.128896
	11	1.035270	0.076088	0.000000	0.012096	1.123454
12	0.492438	0.037114	0.000000	0.009191	0.538743	
1987		4.019991	0.121521	0.000000	0.016760	4.158272
	1	0.150219	0.000000	0.000000	0.000000	0.150219
	2	0.184039	0.000000	0.000000	0.000000	0.184039
	3	0.248309	0.000000	0.000000	0.000000	0.248309
	4	0.256650	0.000000	0.000000	0.000000	0.256650
	5	0.300604	0.000000	0.000000	0.000000	0.300604
	6	0.323002	0.000000	0.000000	0.000000	0.323002
	7	0.410311	0.011969	0.000000	0.000789	0.423069
	8	0.493816	0.023113	0.000000	0.001727	0.518656
	9	0.523228	0.030298	0.000000	0.005928	0.559454
	10	0.517043	0.027143	0.000000	0.003971	0.548157
	11	0.400157	0.020084	0.000000	0.001518	0.421759
12	0.212613	0.008914	0.000000	0.002827	0.224354	
1986		0.044483	0.000000	0.000000	0.000000	0.044483
	12	0.044483	0.000000	0.000000	0.000000	0.044483

## Production , sum wellbores

	Month	Gross - oil [mill Sm3]	Gross - gas [bill Sm3]	Gross - condensate [mill Sm3]	Gross - oil equivalents [mill Sm3]
Sum		378.820500	109.995116	0.000000	488.815616
2024		1.222427	0.526550	0.000000	1.748977
	1	0.109053	0.049427	0.000000	0.158480
	2	0.108423	0.044786	0.000000	0.153209
	3	0.121706	0.047676	0.000000	0.169382
	4	0.117478	0.048751	0.000000	0.166229



# Factpages

## Field

Printed: 10.2.2025 - 23:56

2024	5	0.064402	0.030895	0.000000	0.095297
	6	0.085387	0.036612	0.000000	0.121999
	7	0.107529	0.060875	0.000000	0.168404
	8	0.132534	0.054397	0.000000	0.186931
	9	0.104292	0.039871	0.000000	0.144163
	10	0.140648	0.062878	0.000000	0.203526
	11	0.130975	0.050382	0.000000	0.181357
2023		1.372771	0.443161	0.000000	1.815932
	1	0.118530	0.037378	0.000000	0.155908
	2	0.105449	0.037619	0.000000	0.143068
	3	0.095296	0.030346	0.000000	0.125642
	4	0.114143	0.032669	0.000000	0.146812
	5	0.114098	0.018015	0.000000	0.132113
	6	0.089845	0.018642	0.000000	0.108487
	7	0.108593	0.024956	0.000000	0.133549
	8	0.126241	0.035206	0.000000	0.161447
	9	0.119593	0.053496	0.000000	0.173089
	10	0.116700	0.052685	0.000000	0.169385
	11	0.138234	0.051310	0.000000	0.189544
	12	0.126049	0.050839	0.000000	0.176888
2022		1.641601	0.514015	0.000000	2.155616
	1	0.138029	0.041294	0.000000	0.179323
	2	0.124995	0.037383	0.000000	0.162378
	3	0.147784	0.048783	0.000000	0.196567
	4	0.124057	0.037357	0.000000	0.161414
	5	0.154560	0.043277	0.000000	0.197837
	6	0.132652	0.036876	0.000000	0.169528
	7	0.142451	0.040431	0.000000	0.182882
	8	0.127800	0.037680	0.000000	0.165480
	9	0.134734	0.046347	0.000000	0.181081
	10	0.148454	0.051006	0.000000	0.199460
	11	0.122293	0.047640	0.000000	0.169933
	12	0.143792	0.045941	0.000000	0.189733
2021		1.759614	1.010345	0.000000	2.769959
	1	0.179283	0.123989	0.000000	0.303272
	2	0.144549	0.095202	0.000000	0.239751
	3	0.171567	0.106752	0.000000	0.278319
	4	0.146069	0.094243	0.000000	0.240312
	5	0.165536	0.084397	0.000000	0.249933
	6	0.142024	0.088949	0.000000	0.230973
	7	0.150009	0.125756	0.000000	0.275765
	8	0.147679	0.101874	0.000000	0.249553
9	0.123574	0.058873	0.000000	0.182447	



# Factpages

## Field

Printed: 10.2.2025 - 23:56

2021	10	0.122633	0.048683	0.000000	0.171316
	11	0.136248	0.042316	0.000000	0.178564
	12	0.130443	0.039311	0.000000	0.169754
2020		2.393322	1.604578	0.000000	3.997900
	1	0.234894	0.144839	0.000000	0.379733
	2	0.239437	0.140462	0.000000	0.379899
	3	0.224409	0.189190	0.000000	0.413599
	4	0.216028	0.172539	0.000000	0.388567
	5	0.228582	0.179460	0.000000	0.408042
	6	0.173775	0.123832	0.000000	0.297607
	7	0.203009	0.125772	0.000000	0.328781
	8	0.236407	0.132642	0.000000	0.369049
	9	0.157209	0.116617	0.000000	0.273826
	10	0.104675	0.078487	0.000000	0.183162
	11	0.190985	0.097332	0.000000	0.288317
12	0.183912	0.103406	0.000000	0.287318	
2019		2.739431	1.693604	0.000000	4.433035
	1	0.259610	0.135449	0.000000	0.395059
	2	0.238978	0.122278	0.000000	0.361256
	3	0.246677	0.156677	0.000000	0.403354
	4	0.239883	0.149488	0.000000	0.389371
	5	0.163656	0.097168	0.000000	0.260824
	6	0.216170	0.126897	0.000000	0.343067
	7	0.223299	0.181481	0.000000	0.404780
	8	0.233665	0.156338	0.000000	0.390003
	9	0.198997	0.120144	0.000000	0.319141
	10	0.233759	0.152364	0.000000	0.386123
	11	0.236172	0.147080	0.000000	0.383252
12	0.248565	0.148240	0.000000	0.396805	
2018		2.675509	1.506550	0.000000	4.182059
	1	0.174349	0.093607	0.000000	0.267956
	2	0.176747	0.103752	0.000000	0.280499
	3	0.195502	0.160989	0.000000	0.356491
	4	0.219872	0.131285	0.000000	0.351157
	5	0.236858	0.127893	0.000000	0.364751
	6	0.219950	0.121342	0.000000	0.341292
	7	0.229100	0.102313	0.000000	0.331413
	8	0.219055	0.120712	0.000000	0.339767
	9	0.206016	0.117737	0.000000	0.323753
	10	0.275080	0.156776	0.000000	0.431856
	11	0.274838	0.145470	0.000000	0.420308
12	0.248142	0.124674	0.000000	0.372816	



# Factpages

## Field

Printed: 10.2.2025 - 23:56

2017		2.043233	1.271081	0.000000	3.314314
	1	0.179468	0.131992	0.000000	0.311460
	2	0.165785	0.108169	0.000000	0.273954
	3	0.180159	0.114232	0.000000	0.294391
	4	0.168056	0.092892	0.000000	0.260948
	5	0.158250	0.085069	0.000000	0.243319
	6	0.103106	0.064600	0.000000	0.167706
	7	0.164085	0.083052	0.000000	0.247137
	8	0.214497	0.090082	0.000000	0.304579
	9	0.183215	0.118374	0.000000	0.301589
	10	0.187564	0.128901	0.000000	0.316465
	11	0.160482	0.150478	0.000000	0.310960
12	0.178566	0.103240	0.000000	0.281806	
2016		2.279256	1.324785	0.000000	3.604041
	1	0.193683	0.098928	0.000000	0.292611
	2	0.182100	0.102549	0.000000	0.284649
	3	0.191755	0.103198	0.000000	0.294953
	4	0.225758	0.102380	0.000000	0.328138
	5	0.221373	0.128226	0.000000	0.349599
	6	0.205267	0.115385	0.000000	0.320652
	7	0.183459	0.107219	0.000000	0.290678
	8	0.170180	0.101984	0.000000	0.272164
	9	0.147316	0.098873	0.000000	0.246189
	10	0.194916	0.129153	0.000000	0.324069
	11	0.183285	0.115248	0.000000	0.298533
12	0.180164	0.121642	0.000000	0.301806	
2015		2.098276	1.103785	0.000000	3.202061
	1	0.192463	0.109814	0.000000	0.302277
	2	0.166685	0.109778	0.000000	0.276463
	3	0.191593	0.113883	0.000000	0.305476
	4	0.175503	0.094487	0.000000	0.269990
	5	0.186863	0.084697	0.000000	0.271560
	6	0.147286	0.059156	0.000000	0.206442
	7	0.177844	0.077198	0.000000	0.255042
	8	0.140629	0.057481	0.000000	0.198110
	9	0.148419	0.089246	0.000000	0.237665
	10	0.187789	0.086506	0.000000	0.274295
	11	0.181951	0.103732	0.000000	0.285683
12	0.201251	0.117807	0.000000	0.319058	
2014		2.136387	0.837036	0.000000	2.973423
	1	0.156781	0.046542	0.000000	0.203323
	2	0.151639	0.037623	0.000000	0.189262
	3	0.172417	0.054235	0.000000	0.226652





# Factpages

## Field

Printed: 10.2.2025 - 23:56

2014	4	0.194246	0.060690	0.000000	0.254936
	5	0.181400	0.071423	0.000000	0.252823
	6	0.129168	0.046592	0.000000	0.175760
	7	0.189458	0.070024	0.000000	0.259482
	8	0.198460	0.077381	0.000000	0.275841
	9	0.175919	0.076185	0.000000	0.252104
	10	0.198513	0.082553	0.000000	0.281066
	11	0.185506	0.086775	0.000000	0.272281
	12	0.202880	0.127013	0.000000	0.329893
2013		2.568067	0.751235	0.000000	3.319302
	1	0.217184	0.044937	0.000000	0.262121
	2	0.205590	0.049230	0.000000	0.254820
	3	0.207757	0.059614	0.000000	0.267371
	4	0.210863	0.071336	0.000000	0.282199
	5	0.229815	0.074466	0.000000	0.304281
	6	0.227693	0.066547	0.000000	0.294240
	7	0.224663	0.068065	0.000000	0.292728
	8	0.236885	0.082583	0.000000	0.319468
	9	0.233521	0.074279	0.000000	0.307800
	10	0.209406	0.062447	0.000000	0.271853
	11	0.190397	0.057811	0.000000	0.248208
12	0.174293	0.039920	0.000000	0.214213	
2012		2.537106	0.668529	0.000000	3.205635
	1	0.238281	0.065747	0.000000	0.304028
	2	0.216306	0.054234	0.000000	0.270540
	3	0.226270	0.061485	0.000000	0.287755
	4	0.220238	0.045732	0.000000	0.265970
	5	0.217304	0.046284	0.000000	0.263588
	6	0.195186	0.053723	0.000000	0.248909
	7	0.208257	0.071803	0.000000	0.280060
	8	0.245845	0.072492	0.000000	0.318337
	9	0.256519	0.068159	0.000000	0.324678
	10	0.159358	0.040789	0.000000	0.200147
	11	0.191458	0.047608	0.000000	0.239066
12	0.162084	0.040473	0.000000	0.202557	
2011		2.663029	4.223458	0.000000	6.886487
	1	0.199730	0.357049	0.000000	0.556779
	2	0.199221	0.307969	0.000000	0.507190
	3	0.223626	0.447391	0.000000	0.671017
	4	0.245467	0.354152	0.000000	0.599619
	5	0.140694	0.149706	0.000000	0.290400
	6	0.183530	0.312197	0.000000	0.495727
	7	0.223533	0.344149	0.000000	0.567682



# Factpages

## Field

Printed: 10.2.2025 - 23:56

2011	8	0.238175	0.319204	0.000000	0.557379
	9	0.251239	0.334409	0.000000	0.585648
	10	0.238266	0.362307	0.000000	0.600573
	11	0.254211	0.390153	0.000000	0.644364
	12	0.265337	0.544772	0.000000	0.810109
2010		3.959405	5.028124	0.000000	8.987529
	1	0.377456	0.563271	0.000000	0.940727
	2	0.348753	0.467671	0.000000	0.816424
	3	0.386868	0.514470	0.000000	0.901338
	4	0.360640	0.472036	0.000000	0.832676
	5	0.325246	0.407453	0.000000	0.732699
	6	0.235985	0.244611	0.000000	0.480596
	7	0.313678	0.352408	0.000000	0.666086
	8	0.348047	0.360348	0.000000	0.708395
	9	0.369390	0.384108	0.000000	0.753498
	10	0.352170	0.487865	0.000000	0.840035
	11	0.346308	0.430481	0.000000	0.776789
12	0.194864	0.343402	0.000000	0.538266	
2009		4.689915	6.260276	0.000000	10.950191
	1	0.452786	0.634814	0.000000	1.087600
	2	0.405538	0.558536	0.000000	0.964074
	3	0.443977	0.565825	0.000000	1.009802
	4	0.397897	0.510871	0.000000	0.908768
	5	0.314293	0.217274	0.000000	0.531567
	6	0.355392	0.407679	0.000000	0.763071
	7	0.417413	0.570452	0.000000	0.987865
	8	0.402086	0.565013	0.000000	0.967099
	9	0.417539	0.517403	0.000000	0.934942
	10	0.372259	0.593455	0.000000	0.965714
	11	0.352763	0.558299	0.000000	0.911062
12	0.357972	0.560655	0.000000	0.918627	
2008		5.305486	6.878976	0.000000	12.184462
	1	0.464948	0.697576	0.000000	1.162524
	2	0.447586	0.572132	0.000000	1.019718
	3	0.428705	0.607007	0.000000	1.035712
	4	0.451996	0.500684	0.000000	0.952680
	5	0.478124	0.568416	0.000000	1.046540
	6	0.235302	0.409541	0.000000	0.644843
	7	0.490098	0.566641	0.000000	1.056739
	8	0.474554	0.582966	0.000000	1.057520
	9	0.476680	0.569957	0.000000	1.046637
	10	0.443677	0.606216	0.000000	1.049893
11	0.448325	0.576033	0.000000	1.024358	



# Factpages

## Field

Printed: 10.2.2025 - 23:56

2008	12	0.465491	0.621807	0.000000	1.087298
2007		5.560263	7.622524	0.000000	13.182787
	1	0.484017	0.608956	0.000000	1.092973
	2	0.424618	0.598192	0.000000	1.022810
	3	0.480513	0.671620	0.000000	1.152133
	4	0.474605	0.667963	0.000000	1.142568
	5	0.482603	0.674911	0.000000	1.157514
	6	0.465129	0.622706	0.000000	1.087835
	7	0.473246	0.667747	0.000000	1.140993
	8	0.494740	0.682355	0.000000	1.177095
	9	0.404319	0.497864	0.000000	0.902183
	10	0.446256	0.572798	0.000000	1.019054
	11	0.455145	0.707908	0.000000	1.163053
12	0.475072	0.649504	0.000000	1.124576	
2006		6.429326	6.388665	0.000000	12.817991
	1	0.700569	0.650896	0.000000	1.351465
	2	0.543753	0.600562	0.000000	1.144315
	3	0.624233	0.702459	0.000000	1.326692
	4	0.564299	0.617042	0.000000	1.181341
	5	0.610838	0.577543	0.000000	1.188381
	6	0.579764	0.322454	0.000000	0.902218
	7	0.574864	0.470838	0.000000	1.045702
	8	0.532690	0.517768	0.000000	1.050458
	9	0.345429	0.261360	0.000000	0.606789
	10	0.438529	0.453505	0.000000	0.892034
	11	0.474273	0.682370	0.000000	1.156643
12	0.440085	0.531868	0.000000	0.971953	
2005		8.346418	7.140370	0.000000	15.486788
	1	0.806896	0.617196	0.000000	1.424092
	2	0.705790	0.516124	0.000000	1.221914
	3	0.759761	0.633180	0.000000	1.392941
	4	0.726365	0.572602	0.000000	1.298967
	5	0.733808	0.537064	0.000000	1.270872
	6	0.690944	0.579700	0.000000	1.270644
	7	0.556871	0.552271	0.000000	1.109142
	8	0.578384	0.538435	0.000000	1.116819
	9	0.699048	0.614546	0.000000	1.313594
	10	0.739149	0.659012	0.000000	1.398161
	11	0.682572	0.669286	0.000000	1.351858
12	0.666830	0.650954	0.000000	1.317784	
2004		9.712771	6.582288	0.000000	16.295059
	1	0.891511	0.619988	0.000000	1.511499



# Factpages

## Field

Printed: 10.2.2025 - 23:56

2004	2	0.818576	0.627210	0.000000	1.445786
	3	0.833091	0.657703	0.000000	1.490794
	4	0.808351	0.438658	0.000000	1.247009
	5	0.834747	0.542658	0.000000	1.377405
	6	0.803508	0.425324	0.000000	1.228832
	7	0.819115	0.582495	0.000000	1.401610
	8	0.753752	0.405483	0.000000	1.159235
	9	0.804555	0.384171	0.000000	1.188726
	10	0.852370	0.639498	0.000000	1.491868
	11	0.748375	0.625978	0.000000	1.374353
	12	0.744820	0.633122	0.000000	1.377942
	2003		9.506187	5.100419	0.000000
1		0.753822	0.419866	0.000000	1.173688
2		0.813219	0.487308	0.000000	1.300527
3		0.764992	0.371417	0.000000	1.136409
4		0.582724	0.364297	0.000000	0.947021
5		0.838492	0.347581	0.000000	1.186073
6		0.793871	0.378909	0.000000	1.172780
7		0.802356	0.495353	0.000000	1.297709
8		0.855368	0.515827	0.000000	1.371195
9		0.831542	0.432663	0.000000	1.264205
10		0.689342	0.272528	0.000000	0.961870
11		0.855608	0.368936	0.000000	1.224544
12	0.924851	0.645734	0.000000	1.570585	
2002		9.210722	4.907585	0.000000	14.118307
	1	0.854288	0.525282	0.000000	1.379570
	2	0.789873	0.454330	0.000000	1.244203
	3	0.791472	0.463143	0.000000	1.254615
	4	0.792723	0.450377	0.000000	1.243100
	5	0.801991	0.441887	0.000000	1.243878
	6	0.811281	0.367566	0.000000	1.178847
	7	0.788875	0.442513	0.000000	1.231388
	8	0.776416	0.333349	0.000000	1.109765
	9	0.476772	0.314885	0.000000	0.791657
	10	0.739222	0.372747	0.000000	1.111969
	11	0.801579	0.378793	0.000000	1.180372
12	0.786230	0.362713	0.000000	1.148943	
2001		10.531939	3.760919	0.000000	14.292858
	1	0.984118	0.327962	0.000000	1.312080
	2	0.907984	0.282717	0.000000	1.190701
	3	0.945165	0.272112	0.000000	1.217277
	4	0.959673	0.295167	0.000000	1.254840
	5	0.694518	0.241424	0.000000	0.935942



# Factpages

## Field

Printed: 10.2.2025 - 23:56

2001	6	0.903375	0.266093	0.000000	1.169468
	7	0.882908	0.261225	0.000000	1.144133
	8	0.819655	0.162662	0.000000	0.982317
	9	0.877228	0.281124	0.000000	1.158352
	10	0.924892	0.453557	0.000000	1.378449
	11	0.710493	0.386875	0.000000	1.097368
	12	0.921930	0.530001	0.000000	1.451931
2000		13.272057	3.129553	0.000000	16.401610
	1	1.319050	0.267795	0.000000	1.586845
	2	1.270008	0.266832	0.000000	1.536840
	3	1.197219	0.257555	0.000000	1.454774
	4	0.930936	0.225991	0.000000	1.156927
	5	1.251618	0.260092	0.000000	1.511710
	6	1.248235	0.283046	0.000000	1.531281
	7	1.245116	0.288484	0.000000	1.533600
	8	0.730588	0.151671	0.000000	0.882259
	9	1.097366	0.277811	0.000000	1.375177
	10	0.853575	0.248994	0.000000	1.102569
	11	1.054881	0.292824	0.000000	1.347705
12	1.073465	0.308458	0.000000	1.381923	
1999		17.277185	2.464687	0.000000	19.741872
	1	1.724155	0.221032	0.000000	1.945187
	2	1.466508	0.186356	0.000000	1.652864
	3	1.600432	0.187105	0.000000	1.787537
	4	1.577793	0.187958	0.000000	1.765751
	5	1.612470	0.217596	0.000000	1.830066
	6	1.507689	0.221916	0.000000	1.729605
	7	1.442029	0.210634	0.000000	1.652663
	8	1.531148	0.233190	0.000000	1.764338
	9	0.822856	0.119175	0.000000	0.942031
	10	1.143522	0.178403	0.000000	1.321925
	11	1.392594	0.248703	0.000000	1.641297
12	1.455989	0.252619	0.000000	1.708608	
1998		19.854842	2.607437	0.000000	22.462279
	1	1.889023	0.263480	0.000000	2.152503
	2	1.787998	0.228231	0.000000	2.016229
	3	1.830853	0.232618	0.000000	2.063471
	4	1.706645	0.217347	0.000000	1.923992
	5	1.688430	0.237666	0.000000	1.926096
	6	1.123375	0.132911	0.000000	1.256286
	7	1.777650	0.214465	0.000000	1.992115
	8	1.121137	0.138781	0.000000	1.259918
9	1.687200	0.216801	0.000000	1.904001	



# Factpages

## Field

Printed: 10.2.2025 - 23:56

1998	10	1.760784	0.245969	0.000000	2.006753
	11	1.748908	0.234144	0.000000	1.983052
	12	1.732839	0.245024	0.000000	1.977863
1997		24.121289	3.080629	0.000000	27.201918
	1	2.339717	0.288408	0.000000	2.628125
	2	1.922269	0.232821	0.000000	2.155090
	3	2.072470	0.248660	0.000000	2.321130
	4	2.275333	0.286474	0.000000	2.561807
	5	2.294919	0.305574	0.000000	2.600493
	6	2.192283	0.284084	0.000000	2.476367
	7	2.250359	0.296677	0.000000	2.547036
	8	1.781939	0.236042	0.000000	2.017981
	9	0.943886	0.117321	0.000000	1.061207
	10	2.098505	0.263566	0.000000	2.362071
	11	1.982783	0.260776	0.000000	2.243559
12	1.966826	0.260226	0.000000	2.227052	
1996		25.445015	3.046106	0.000000	28.491121
	1	2.283100	0.276603	0.000000	2.559703
	2	2.185638	0.258665	0.000000	2.444303
	3	2.286704	0.264930	0.000000	2.551634
	4	2.286078	0.269482	0.000000	2.555560
	5	2.087206	0.242456	0.000000	2.329662
	6	2.224703	0.266421	0.000000	2.491124
	7	2.265623	0.275631	0.000000	2.541254
	8	2.171645	0.260204	0.000000	2.431849
	9	2.049740	0.247040	0.000000	2.296780
	10	1.104202	0.128256	0.000000	1.232458
	11	2.127484	0.264057	0.000000	2.391541
12	2.372892	0.292361	0.000000	2.665253	
1995		28.090946	3.170041	0.000000	31.260987
	1	2.577878	0.276964	0.000000	2.854842
	2	2.129869	0.235321	0.000000	2.365190
	3	2.448173	0.268662	0.000000	2.716835
	4	2.454159	0.276374	0.000000	2.730533
	5	2.568676	0.286254	0.000000	2.854930
	6	2.418309	0.274058	0.000000	2.692367
	7	2.578281	0.294205	0.000000	2.872486
	8	1.533779	0.171900	0.000000	1.705679
	9	2.292722	0.261887	0.000000	2.554609
	10	2.481526	0.279796	0.000000	2.761322
	11	2.231826	0.262952	0.000000	2.494778
12	2.375748	0.281668	0.000000	2.657416	



# Factpages

## Field

Printed: 10.2.2025 - 23:56

1994		30.743270	3.244003	0.000000	33.987273
	1	2.639381	0.276838	0.000000	2.916219
	2	2.435542	0.255197	0.000000	2.690739
	3	2.697165	0.285788	0.000000	2.982953
	4	2.702303	0.283606	0.000000	2.985909
	5	2.794567	0.297939	0.000000	3.092506
	6	2.650027	0.294862	0.000000	2.944889
	7	2.716420	0.297295	0.000000	3.013715
	8	1.394659	0.144808	0.000000	1.539467
	9	2.598876	0.262091	0.000000	2.860967
	10	2.804925	0.287366	0.000000	3.092291
	11	2.619850	0.272780	0.000000	2.892630
12	2.689555	0.285433	0.000000	2.974988	
1993		28.676620	3.045140	0.000000	31.721760
	1	2.178990	0.231751	0.000000	2.410741
	2	1.940956	0.202868	0.000000	2.143824
	3	2.519658	0.261420	0.000000	2.781078
	4	2.464480	0.259759	0.000000	2.724239
	5	2.522194	0.269004	0.000000	2.791198
	6	1.617221	0.175222	0.000000	1.792443
	7	2.590289	0.277162	0.000000	2.867451
	8	2.583025	0.284876	0.000000	2.867901
	9	2.521409	0.273086	0.000000	2.794495
	10	2.609864	0.277738	0.000000	2.887602
	11	2.565967	0.266735	0.000000	2.832702
12	2.562567	0.265519	0.000000	2.828086	
1992		25.027100	2.671968	0.000000	27.699068
	1	2.142760	0.219545	0.000000	2.362305
	2	1.939938	0.202181	0.000000	2.142119
	3	2.065510	0.213834	0.000000	2.279344
	4	1.996363	0.216193	0.000000	2.212556
	5	2.123578	0.233727	0.000000	2.357305
	6	1.614487	0.173490	0.000000	1.787977
	7	2.059234	0.216691	0.000000	2.275925
	8	2.114273	0.225255	0.000000	2.339528
	9	2.059281	0.217360	0.000000	2.276641
	10	2.216684	0.238645	0.000000	2.455329
	11	2.272275	0.247506	0.000000	2.519781
12	2.422717	0.267541	0.000000	2.690258	
1991		19.906698	2.101448	0.000000	22.008146
	1	1.576299	0.165804	0.000000	1.742103
	2	1.416917	0.149930	0.000000	1.566847
	3	1.481480	0.154278	0.000000	1.635758



# Factpages

## Field

Printed: 10.2.2025 - 23:56

1991	4	1.547226	0.158461	0.000000	1.705687
	5	1.774038	0.191124	0.000000	1.965162
	6	1.743148	0.189878	0.000000	1.933026
	7	1.798557	0.196707	0.000000	1.995264
	8	1.040535	0.105237	0.000000	1.145772
	9	1.849955	0.195856	0.000000	2.045811
	10	1.970256	0.210388	0.000000	2.180644
	11	1.796536	0.188061	0.000000	1.984597
	12	1.911751	0.195724	0.000000	2.107475
1990		14.829574	1.504295	0.000000	16.333869
	1	1.209840	0.115787	0.000000	1.325627
	2	1.079693	0.105017	0.000000	1.184710
	3	1.220765	0.118368	0.000000	1.339133
	4	1.212633	0.119231	0.000000	1.331864
	5	1.318139	0.133612	0.000000	1.451751
	6	1.308004	0.131081	0.000000	1.439085
	7	1.049181	0.105889	0.000000	1.155070
	8	0.821481	0.085999	0.000000	0.907480
	9	1.278301	0.133440	0.000000	1.411741
	10	1.452338	0.151799	0.000000	1.604137
	11	1.431529	0.147336	0.000000	1.578865
	12	1.447670	0.156736	0.000000	1.604406
1989		15.489959	1.521168	0.000000	17.011127
	1	1.214461	0.125441	0.000000	1.339902
	2	1.069855	0.110700	0.000000	1.180555
	3	1.396699	0.139129	0.000000	1.535828
	4	1.399138	0.138636	0.000000	1.537774
	5	1.372246	0.134218	0.000000	1.506464
	6	1.055413	0.102002	0.000000	1.157415
	7	1.353897	0.131303	0.000000	1.485200
	8	1.371310	0.131994	0.000000	1.503304
	9	1.337567	0.128911	0.000000	1.466478
	10	1.359269	0.130999	0.000000	1.490268
	11	1.374231	0.134105	0.000000	1.508336
	12	1.185873	0.113730	0.000000	1.299603
1988		8.639010	0.879439	0.000000	9.518449
	1	0.541375	0.051498	0.000000	0.592873
	2	0.533522	0.051009	0.000000	0.584531
	3	0.731363	0.068892	0.000000	0.800255
	4	0.719825	0.067734	0.000000	0.787559
	5	0.542265	0.052594	0.000000	0.594859
	6	0.365933	0.037804	0.000000	0.403737
	7	0.821212	0.084760	0.000000	0.905972





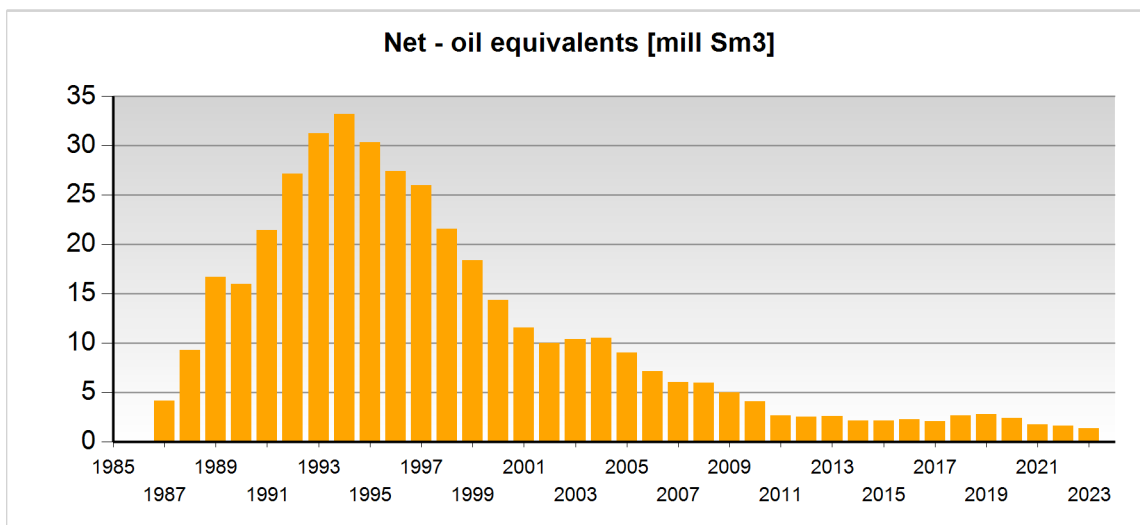
# Factpages

## Field

Printed: 10.2.2025 - 23:56

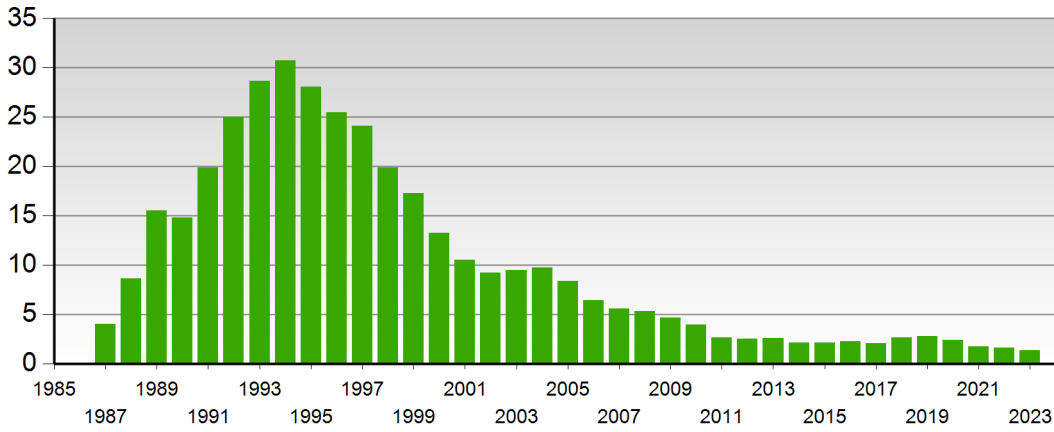
1988	8	0.891063	0.094295	0.000000	0.985358
	9	0.922027	0.102337	0.000000	1.024364
	10	1.042717	0.108739	0.000000	1.151456
	11	1.035270	0.106833	0.000000	1.142103
	12	0.492438	0.052944	0.000000	0.545382
1987		4.019991	0.376690	0.000000	4.396681
	1	0.150219	0.013659	0.000000	0.163878
	2	0.184039	0.016978	0.000000	0.201017
	3	0.248309	0.023170	0.000000	0.271479
	4	0.256650	0.023467	0.000000	0.280117
	5	0.300604	0.027901	0.000000	0.328505
	6	0.323002	0.030008	0.000000	0.353010
	7	0.410311	0.038347	0.000000	0.448658
	8	0.493816	0.046663	0.000000	0.540479
	9	0.523228	0.049386	0.000000	0.572614
	10	0.517043	0.048682	0.000000	0.565725
	11	0.400157	0.037703	0.000000	0.437860
	12	0.212613	0.020726	0.000000	0.233339
1986		0.044483	0.003654	0.000000	0.048137
	12	0.044483	0.003654	0.000000	0.048137

## Production - charts

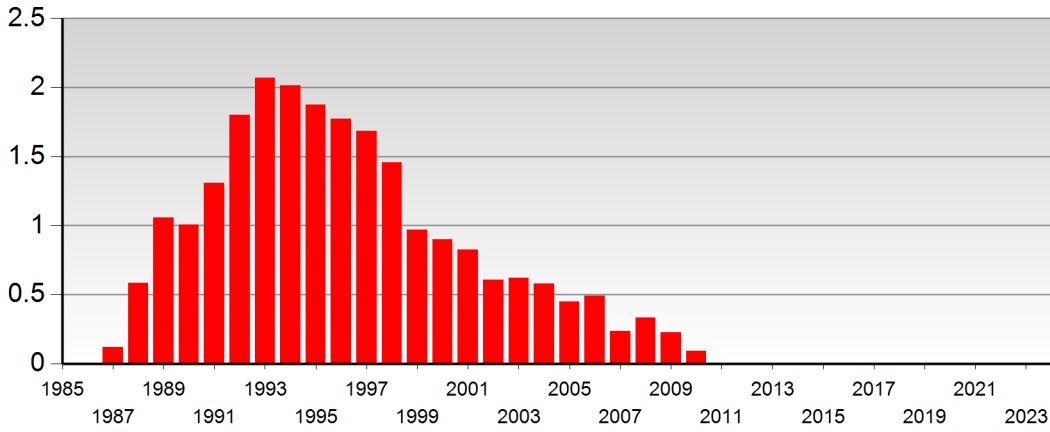




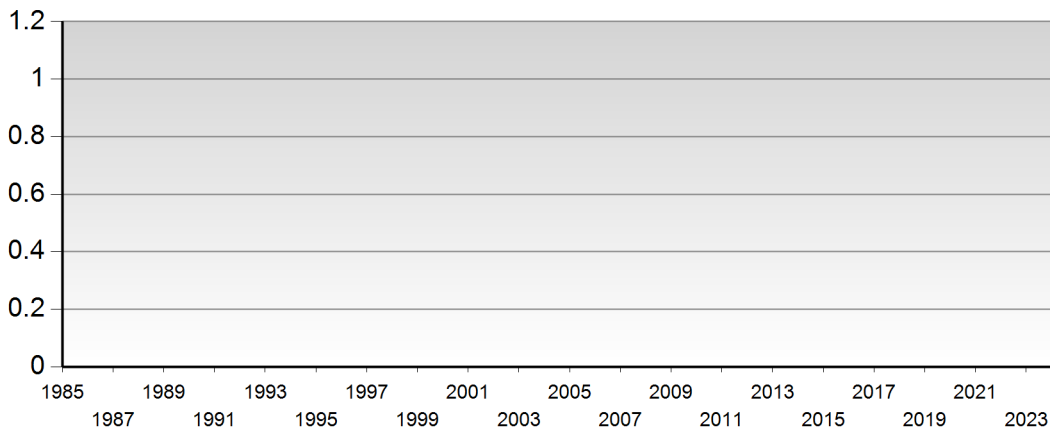
Net - oil [mill Sm3]



Net - gas [bill Sm3]

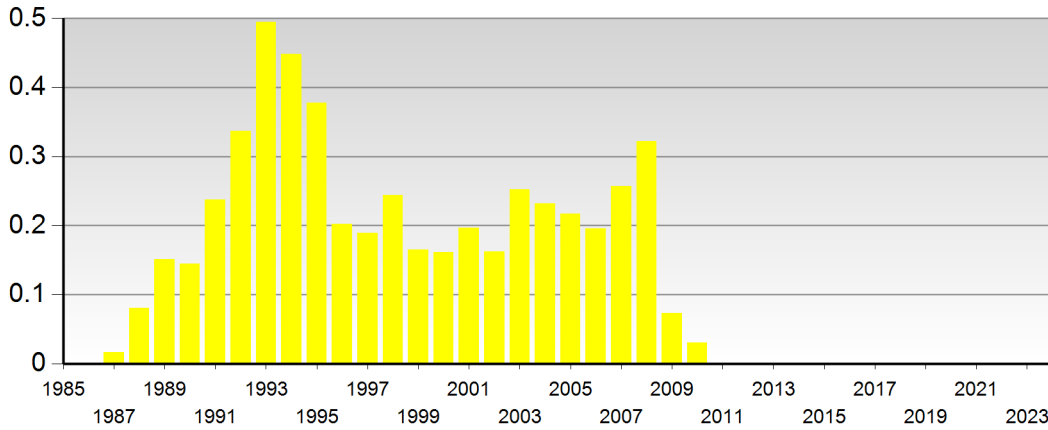


Net - condensate [mill Sm3]

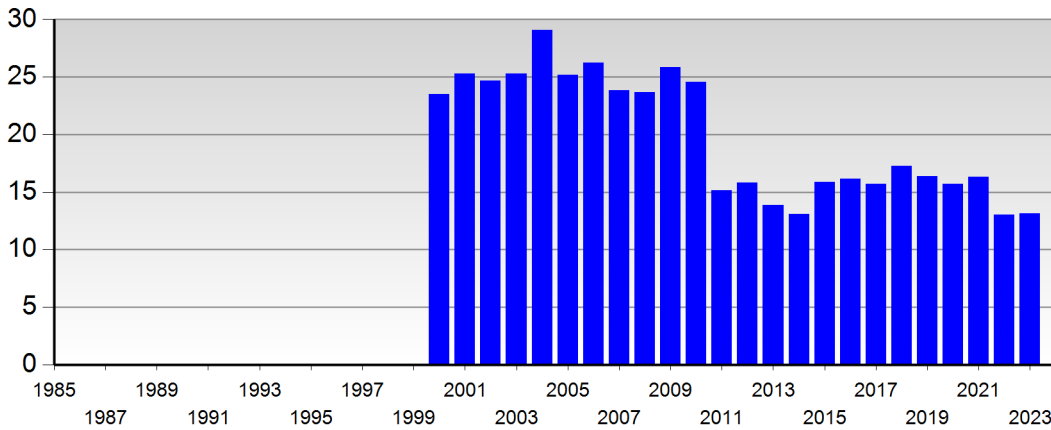




Net - NGL [mill Sm3]



Produced water in field [mill Sm3]



Any produced water is only included after 1.1.2000

Wellbores - exploration

Wellbore name	Entered date	Completed date	Purpose	Status	Content
<a href="#">34/10-1</a>	20.06.1978	08.09.1978	WILDCAT	P&A	OIL
<a href="#">34/10-3</a>	14.03.1979	07.06.1979	APPRAISAL	SUSPENDED	OIL
<a href="#">34/10-3 R</a>	03.10.1987	10.10.1987	APPRAISAL	P&A	OIL
<a href="#">34/10-4</a>	12.08.1979	15.10.1979	APPRAISAL	P&A	OIL
<a href="#">34/10-5</a>	18.10.1979	02.01.1980	APPRAISAL	P&A	OIL
<a href="#">34/10-6</a>	13.11.1979	22.01.1980	APPRAISAL	P&A	DRY
<a href="#">34/10-7</a>	07.01.1980	23.03.1980	APPRAISAL	SUSPENDED	OIL
<a href="#">34/10-7 R</a>	31.05.1983	14.07.1983	APPRAISAL	P&A	OIL
<a href="#">34/10-8</a>	03.03.1980	25.05.1980	APPRAISAL	P&A	OIL
<a href="#">34/10-9</a>	24.03.1980	09.05.1980	APPRAISAL	SUSPENDED	OIL
<a href="#">34/10-9 R</a>	29.05.1980	03.07.1980	APPRAISAL	P&A	OIL
<a href="#">34/10-11</a>	23.10.1980	05.03.1981	APPRAISAL	P&A	OIL
<a href="#">34/10-13</a>	24.08.1981	05.01.1982	APPRAISAL	P&A	OIL
<a href="#">34/10-14</a>	24.12.1981	19.03.1982	APPRAISAL	P&A	OIL



# Factpages

## Field

Printed: 10.2.2025 - 23:56

<a href="#">34/10-15</a>	16.10.1982	12.12.1982	APPRAISAL	P&A	SHOWS
<a href="#">34/10-19</a>	05.10.1983	06.12.1983	APPRAISAL	P&A	DRY
<a href="#">34/10-22</a>	25.10.1984	05.11.1984	APPRAISAL	P&A	GAS
<a href="#">34/10-24</a>	30.06.1985	05.08.1985	APPRAISAL	P&A	GAS
<a href="#">34/10-25</a>	06.08.1985	17.08.1985	APPRAISAL	P&A	DRY
<a href="#">34/10-26</a>	18.10.1985	26.10.1985	APPRAISAL	P&A	DRY
<a href="#">34/10-27</a>	02.12.1985	14.12.1985	APPRAISAL	SUSPENDED	GAS
<a href="#">34/10-27 R</a>	27.01.1986	31.01.1986	APPRAISAL	P&A	GAS
<a href="#">34/10-29</a>	27.12.1985	26.01.1986	APPRAISAL	P&A	GAS
<a href="#">34/10-31</a>	01.02.1986	08.04.1986	APPRAISAL	P&A	GAS
<a href="#">34/10-34</a>	10.04.1991	31.05.1991	WILDCAT	SUSPENDED	OIL
<a href="#">34/10-34 R</a>	06.10.2001	16.10.2001	WILDCAT	P&A	OIL
<a href="#">34/10-40 S</a>	13.08.1995	13.10.1995	WILDCAT	RE-CLASS TO DEV	GAS
<a href="#">34/10-45 A</a>	12.01.2002	06.02.2002	APPRAISAL	RE-CLASS TO DEV	GAS/CONDE NSATE
<a href="#">34/10-45 B</a>	07.10.2003	24.11.2003	WILDCAT	RE-CLASS TO DEV	GAS/CONDE NSATE
<a href="#">34/10-45 S</a>	03.11.2001	08.01.2002	WILDCAT	RE-CLASS TO DEV	GAS/CONDE NSATE
<a href="#">34/10-46 A</a>	01.02.2002	16.03.2002	WILDCAT	RE-CLASS TO DEV	OIL/GAS
<a href="#">34/10-46 B</a>	17.03.2002	22.05.2002	APPRAISAL	RE-CLASS TO DEV	DRY
<a href="#">34/10-46 S</a>	13.11.2001	30.01.2002	WILDCAT	RE-CLASS TO DEV	GAS

## Wellbores - development

Wellbore name	Entered date	Completed date	Purpose	Content
<a href="#">34/10-A-1 H</a>	19.08.1985	14.10.1985	PRODUCTION	OIL
<a href="#">34/10-A-2 H</a>	28.10.1985	21.11.1985	PRODUCTION	NOT APPLICABLE
<a href="#">34/10-A-2 AH</a>	15.05.1986	14.06.1986	PRODUCTION	OIL
<a href="#">34/10-A-3 H</a>	29.11.1985	27.01.1986	PRODUCTION	OIL
<a href="#">34/10-A-4 H</a>	31.01.1986	30.04.1986	PRODUCTION	OIL
<a href="#">34/10-A-5 H</a>	04.12.1986	04.02.1987	INJECTION	WATER
<a href="#">34/10-A-6</a>	11.02.1987	08.03.1987	PRODUCTION	GAS
<a href="#">34/10-A-6 A</a>	25.04.1996	23.05.1996	PRODUCTION	OIL
<a href="#">34/10-A-6 B</a>	26.01.2007	10.02.2007	PRODUCTION	OIL
<a href="#">34/10-A-7</a>	10.03.1987	20.03.1987	PRODUCTION	GAS
<a href="#">34/10-A-7 A</a>	01.12.1996	23.01.1997	PRODUCTION	OIL
<a href="#">34/10-A-7 B</a>	25.02.2005	14.03.2005	PRODUCTION	OIL
<a href="#">34/10-A-7 C</a>	30.05.2022	17.07.2022	PRODUCTION	OIL
<a href="#">34/10-A-8</a>	09.04.1987	28.05.1987	INJECTION	WATER
<a href="#">34/10-A-8 A</a>	05.08.2018	18.08.2018	PRODUCTION	OIL



# Factpages

## Field

Printed: 10.2.2025 - 23:56

<a href="#">34/10-A-9 H</a>	23.03.1987	18.05.1987	PRODUCTION	OIL
<a href="#">34/10-A-10</a>	07.06.1987	26.07.1987	PRODUCTION	OIL
<a href="#">34/10-A-10 A</a>	08.03.1997	20.03.1997	PRODUCTION	OIL
<a href="#">34/10-A-10 B</a>	15.09.2015	02.11.2015	INJECTION	WATER
<a href="#">34/10-A-11</a>	06.08.1987	04.10.1987	INJECTION	WATER
<a href="#">34/10-A-11 A</a>	05.01.2024	26.03.2024	PRODUCTION	OIL
<a href="#">34/10-A-12</a>	26.10.1987	16.12.1987	INJECTION	WATER
<a href="#">34/10-A-12 A</a>	30.11.2017	10.01.2018	PRODUCTION	OIL
<a href="#">34/10-A-13</a>	24.12.1987	09.02.1988	INJECTION	GAS
<a href="#">34/10-A-13 A</a>	07.02.2019	21.04.2019	PRODUCTION	OIL
<a href="#">34/10-A-14</a>	27.02.1988	11.04.1988	PRODUCTION	OIL
<a href="#">34/10-A-14 A</a>	29.11.2015	04.12.2015	INJECTION	WATER
<a href="#">34/10-A-15</a>	19.04.1988	29.05.1988	INJECTION	WATER
<a href="#">34/10-A-15 A</a>	14.01.2004	06.03.2004	INJECTION	CUTTINGS
<a href="#">34/10-A-16</a>	08.06.1988	11.07.1988	PRODUCTION	OIL
<a href="#">34/10-A-16 A</a>	23.10.1989	29.10.1989	PRODUCTION	OIL
<a href="#">34/10-A-17</a>	23.07.1988	11.09.1988	PRODUCTION	OIL
<a href="#">34/10-A-17 A</a>	05.12.1995	05.01.1996	INJECTION	WATER
<a href="#">34/10-A-17 B</a>	23.01.2022	17.04.2022	PRODUCTION	OIL
<a href="#">34/10-A-18</a>	28.09.1988	30.10.1988	INJECTION	WATER
<a href="#">34/10-A-18 A</a>	17.07.2016	28.10.2016	INJECTION	GAS
<a href="#">34/10-A-19</a>	05.11.1988	04.12.1988	PRODUCTION	OIL
<a href="#">34/10-A-19 A</a>	28.11.1997	06.01.1998	PRODUCTION	OIL
<a href="#">34/10-A-19 B</a>	05.05.2020	19.06.2020	PRODUCTION	OIL
<a href="#">34/10-A-20</a>	09.12.1988	07.01.1989	INJECTION	WATER
<a href="#">34/10-A-20 A</a>	23.01.1991	15.02.1991	INJECTION	WATER
<a href="#">34/10-A-20 B</a>	01.06.2013	16.09.2013	OBSERVATION	GAS
<a href="#">34/10-A-20 C</a>	20.11.2013	25.11.2014	INJECTION	WATER
<a href="#">34/10-A-21</a>	15.01.1989	22.02.1989	PRODUCTION	OIL
<a href="#">34/10-A-21 A</a>	24.11.1999	23.01.2000	INJECTION	WATER
<a href="#">34/10-A-22</a>	28.02.1989	26.03.1989	INJECTION	GAS
<a href="#">34/10-A-22 A</a>	23.05.2016	26.08.2016	PRODUCTION	OIL
<a href="#">34/10-A-22 B</a>	19.11.2016	25.11.2016	PRODUCTION	OIL
<a href="#">34/10-A-23</a>	31.03.1989	16.05.1989	INJECTION	WATER
<a href="#">34/10-A-24</a>	06.06.1989	08.07.1989	INJECTION	WATER
<a href="#">34/10-A-24 A</a>	04.06.1990	14.07.1990	INJECTION	WATER
<a href="#">34/10-A-24 B</a>	11.04.2007	29.04.2007	PRODUCTION	OIL
<a href="#">34/10-A-25</a>	22.07.1989	25.08.1989	INJECTION	WATER
<a href="#">34/10-A-25 A</a>	05.09.1989	28.09.1989	INJECTION	WATER
<a href="#">34/10-A-25 B</a>	16.12.2004	25.01.2005	PRODUCTION	OIL/GAS
<a href="#">34/10-A-25 C</a>	26.08.2019	23.11.2019	INJECTION	WATER
<a href="#">34/10-A-26</a>	07.10.1989	27.11.1989	PRODUCTION	OIL
<a href="#">34/10-A-27</a>	05.12.1989	13.01.1990	PRODUCTION	OIL



## Factpages

### Field

Printed: 10.2.2025 - 23:56

<a href="#">34/10-A-27 A</a>	12.04.1990	15.05.1990	INJECTION	WATER
<a href="#">34/10-A-27 B</a>	22.05.2018	05.07.2018	PRODUCTION	OIL
<a href="#">34/10-A-27 BY2</a>	28.10.2023	10.12.2023	PRODUCTION	
<a href="#">34/10-A-28</a>	30.01.1990	04.03.1990	PRODUCTION	OIL
<a href="#">34/10-A-28 A</a>	21.12.2008	11.03.2009	PRODUCTION	OIL
<a href="#">34/10-A-29</a>	24.08.1990	29.09.1990	PRODUCTION	OIL
<a href="#">34/10-A-29 A</a>	04.11.2003	16.11.2003	PRODUCTION	OIL
<a href="#">34/10-A-30</a>	03.10.1990	03.11.1990	PRODUCTION	OIL
<a href="#">34/10-A-30 A</a>	16.09.2003	01.10.2003	PRODUCTION	OIL
<a href="#">34/10-A-30 B</a>	24.01.2016	12.03.2016	PRODUCTION	OIL
<a href="#">34/10-A-30 C</a>	13.03.2016	19.03.2016	PRODUCTION	OIL
<a href="#">34/10-A-31</a>	08.12.1990	16.01.1991	PRODUCTION	OIL
<a href="#">34/10-A-31 A</a>	10.12.2020	15.01.2021	PRODUCTION	OIL
<a href="#">34/10-A-32</a>	19.03.1991	02.05.1991	PRODUCTION	OIL
<a href="#">34/10-A-32 A</a>	09.09.1993	03.10.1993	PRODUCTION	OIL
<a href="#">34/10-A-32 B</a>	04.10.1993	17.10.1993	PRODUCTION	OIL
<a href="#">34/10-A-33</a>	09.05.1991	29.06.1991	PRODUCTION	OIL
<a href="#">34/10-A-34</a>	15.07.1991	06.10.1991	OBSERVATION	NOT APPLICABLE
<a href="#">34/10-A-34 A</a>	09.10.1991	21.10.1991	PRODUCTION	OIL
<a href="#">34/10-A-34 B</a>	28.12.2016	24.04.2017	PRODUCTION	OIL/GAS
<a href="#">34/10-A-35</a>	20.11.1991	14.01.1992	INJECTION	WATER
<a href="#">34/10-A-35 A</a>	07.04.2018	30.04.2018	INJECTION	WATER
<a href="#">34/10-A-36</a>	22.01.1992	21.05.1992	PRODUCTION	OIL
<a href="#">34/10-A-36 A</a>	13.10.2009	28.10.2009	OBSERVATION	OIL
<a href="#">34/10-A-36 B</a>	29.10.2009	09.11.2009	PRODUCTION	OIL
<a href="#">34/10-A-36 C</a>	10.11.2009	22.11.2009	PRODUCTION	OIL
<a href="#">34/10-A-37</a>	02.07.1992	21.08.1992	PRODUCTION	OIL
<a href="#">34/10-A-37 A</a>	17.09.2018	05.10.2018	INJECTION	GAS
<a href="#">34/10-A-38</a>	11.09.1992	21.10.1992	INJECTION	WATER
<a href="#">34/10-A-38 A</a>	30.06.2007	13.07.2007	INJECTION	GAS
<a href="#">34/10-A-39</a>	18.11.1992	15.12.1992	OBSERVATION	NOT APPLICABLE
<a href="#">34/10-A-39 A</a>	15.12.1992	03.01.1993	PRODUCTION	OIL
<a href="#">34/10-A-40</a>	25.02.1993	12.07.1993	PRODUCTION	OIL
<a href="#">34/10-A-41</a>	19.03.1993	09.05.1993	PRODUCTION	OIL
<a href="#">34/10-A-41 A</a>	23.09.2000	10.10.2000	INJECTION	WATER
<a href="#">34/10-A-41 B</a>	24.08.2001	01.10.2001	INJECTION	WATER
<a href="#">34/10-A-41 C</a>	29.04.2023	16.06.2023	PRODUCTION	WATER
<a href="#">34/10-A-42</a>	08.06.1994	21.08.1994	PRODUCTION	OIL
<a href="#">34/10-A-42 A</a>	13.07.2023	05.09.2023	PRODUCTION	
<a href="#">34/10-A-43</a>	14.03.1995	28.04.1995	PRODUCTION	OIL
<a href="#">34/10-A-43 A</a>	13.09.2010	15.10.2010	PRODUCTION	OIL
<a href="#">34/10-A-43 B</a>	24.10.2010	05.11.2010	PRODUCTION	OIL



## Factpages

### Field

Printed: 10.2.2025 - 23:56

<a href="#">34/10-A-43 C</a>	26.05.2021	13.11.2021	INJECTION	WATER
<a href="#">34/10-A-44</a>	30.01.1996	07.04.1996	INJECTION	GAS
<a href="#">34/10-A-45</a>	25.08.1996	23.09.1996	PRODUCTION	OIL
<a href="#">34/10-A-45 A</a>	09.08.2008	04.09.2008	PRODUCTION	OIL
<a href="#">34/10-A-46</a>	14.03.2000	05.05.2000	PRODUCTION	OIL
<a href="#">34/10-A-48</a>	13.11.2001	30.01.2002	PRODUCTION	OIL
<a href="#">34/10-A-48 A</a>	01.02.2002	16.03.2002	PRODUCTION	OIL
<a href="#">34/10-A-48 B</a>	17.03.2002	22.05.2002	INJECTION	WATER
<a href="#">34/10-A-48 C</a>	13.04.2009	14.07.2009	PRODUCTION	OIL
<a href="#">34/10-A-48 D</a>	28.08.2024	26.10.2024	OBSERVATION	OIL/GAS
<a href="#">34/10-A-48 F</a>	20.12.2024		PRODUCTION	
<a href="#">34/10-B-1</a>	23.11.1987	13.02.1988	PRODUCTION	OIL
<a href="#">34/10-B-1 A</a>	25.12.2002	06.01.2003	PRODUCTION	OIL
<a href="#">34/10-B-1 B</a>	07.11.2004	27.12.2004	PRODUCTION	OIL
<a href="#">34/10-B-2</a>	25.03.1988	26.05.1988	PRODUCTION	OIL
<a href="#">34/10-B-2 A</a>	31.12.2008	08.01.2009	PRODUCTION	OIL
<a href="#">34/10-B-2 B</a>	08.01.2018	30.01.2018	INJECTION	WATER
<a href="#">34/10-B-3</a>	03.06.1988	06.07.1988	PRODUCTION	OIL
<a href="#">34/10-B-3 A</a>	15.08.2003	27.08.2003	INJECTION	WATER
<a href="#">34/10-B-4</a>	26.07.1988	02.09.1988	PRODUCTION	OIL
<a href="#">34/10-B-4 A</a>	11.04.1999	06.06.1999	PRODUCTION	OIL
<a href="#">34/10-B-4 B</a>	06.05.2007	27.05.2007	INJECTION	WATER
<a href="#">34/10-B-5</a>	25.10.1988	14.01.1989	PRODUCTION	OIL
<a href="#">34/10-B-5 A</a>	09.08.1996	14.12.1996	PRODUCTION	OIL
<a href="#">34/10-B-5 B</a>	05.04.2024	17.04.2024	PRODUCTION	OIL
<a href="#">34/10-B-6</a>	06.02.1989	10.03.1989	PRODUCTION	OIL/GAS
<a href="#">34/10-B-6 A</a>	29.08.2024	12.01.2025	PRODUCTION	
<a href="#">34/10-B-7</a>	19.03.1989	11.04.1989	INJECTION	WATER
<a href="#">34/10-B-7 A</a>	03.11.2002	07.12.2002	PRODUCTION	OIL
<a href="#">34/10-B-7 B</a>	11.10.2006	04.11.2006	PRODUCTION	OIL
<a href="#">34/10-B-7 C</a>	18.08.2008	06.09.2008	INJECTION	WATER
<a href="#">34/10-B-7 D</a>	22.11.2013	31.03.2014	INJECTION	WATER
<a href="#">34/10-B-8</a>	17.04.1989	12.05.1989	INJECTION	WATER
<a href="#">34/10-B-8 A</a>	03.02.2019	22.02.2019	PRODUCTION	OIL
<a href="#">34/10-B-8 B</a>	18.03.2019	22.03.2019	PRODUCTION	OIL
<a href="#">34/10-B-9</a>	19.05.1989	14.06.1989	PRODUCTION	OIL
<a href="#">34/10-B-9 A</a>	17.06.2003	02.07.2003	PRODUCTION	OIL/GAS
<a href="#">34/10-B-9 B</a>	11.10.2021	26.11.2021	PRODUCTION	OIL
<a href="#">34/10-B-10</a>	30.06.1989	13.08.1989	PRODUCTION	DRY
<a href="#">34/10-B-10 A</a>	26.08.1989	14.09.1989	PRODUCTION	OIL
<a href="#">34/10-B-11</a>	23.09.1989	02.11.1989	INJECTION	CUTTINGS
<a href="#">34/10-B-12</a>	09.11.1989	28.12.1989	INJECTION	WATER
<a href="#">34/10-B-12 A</a>	22.01.2008	30.04.2008	PRODUCTION	OIL



# Factpages

## Field

Printed: 10.2.2025 - 23:56

<a href="#">34/10-B-12 B</a>	24.02.2018	25.03.2018	INJECTION	WATER
<a href="#">34/10-B-13</a>	13.02.1990	12.04.1990	PRODUCTION	OIL
<a href="#">34/10-B-13 A</a>	29.04.1997	19.07.1997	PRODUCTION	OIL
<a href="#">34/10-B-14</a>	23.04.1990	07.11.1990	OBSERVATION	NOT APPLICABLE
<a href="#">34/10-B-14 A</a>	26.12.1990	27.02.1991	INJECTION	WATER
<a href="#">34/10-B-14 B</a>	25.07.2013	14.10.2013	INJECTION	WATER
<a href="#">34/10-B-14 C</a>	18.01.2017	24.05.2017	PRODUCTION	OIL/GAS
<a href="#">34/10-B-15</a>	07.06.1990	17.08.1990	PRODUCTION	OIL
<a href="#">34/10-B-15 A</a>	22.03.2003	15.04.2003	PRODUCTION	OIL
<a href="#">34/10-B-15 B</a>	28.10.2020	07.12.2020	PRODUCTION	NOT APPLICABLE
<a href="#">34/10-B-15 C</a>	09.12.2020	16.12.2020	PRODUCTION	OIL
<a href="#">34/10-B-16</a>	27.04.1991	07.06.1991	INJECTION	WATER
<a href="#">34/10-B-16 A</a>	20.02.2016	13.04.2016	INJECTION	WATER
<a href="#">34/10-B-17</a>	04.07.1991	08.08.1991	PRODUCTION	OIL
<a href="#">34/10-B-17 A</a>	14.11.2006	18.12.2006	PRODUCTION	OIL
<a href="#">34/10-B-17 B</a>	02.07.2020	14.07.2020	PRODUCTION	OIL
<a href="#">34/10-B-18</a>	13.08.1991	18.10.1991	INJECTION	WATER
<a href="#">34/10-B-18 A</a>	25.04.2021	30.12.2021	PRODUCTION	OIL
<a href="#">34/10-B-19</a>	22.11.1991	06.01.1992	PRODUCTION	OIL
<a href="#">34/10-B-19 A</a>	19.04.1992	02.05.1992	PRODUCTION	OIL
<a href="#">34/10-B-20</a>	09.01.1992	10.02.1992	PRODUCTION	OIL
<a href="#">34/10-B-20 A</a>	13.02.2007	02.04.2007	INJECTION	WATER
<a href="#">34/10-B-21</a>	27.02.1992	06.04.1992	PRODUCTION	OIL
<a href="#">34/10-B-21 A</a>	30.05.2001	08.06.2001	PRODUCTION	OIL
<a href="#">34/10-B-21 B</a>	13.06.2001	21.06.2001	PRODUCTION	OIL
<a href="#">34/10-B-22</a>	15.05.1992	12.06.1992	INJECTION	WATER
<a href="#">34/10-B-22 A</a>	25.06.1992	06.07.1992	INJECTION	WATER
<a href="#">34/10-B-22 B</a>	06.04.2019	10.06.2019	PRODUCTION	OIL
<a href="#">34/10-B-23</a>	14.06.1992	30.08.1992	PRODUCTION	OIL/GAS
<a href="#">34/10-B-24</a>	11.09.1992	25.10.1992	PRODUCTION	OIL
<a href="#">34/10-B-24 A</a>	14.08.2010	23.08.2010	PRODUCTION	OIL/GAS
<a href="#">34/10-B-25</a>	22.11.1992	30.04.1993	PRODUCTION	OIL
<a href="#">34/10-B-25 A</a>	19.06.2019	15.07.2019	PRODUCTION	OIL
<a href="#">34/10-B-26</a>	14.12.1992	25.01.1993	INJECTION	WATER
<a href="#">34/10-B-26 A</a>	18.07.2004	18.08.2004	PRODUCTION	OIL
<a href="#">34/10-B-26 AY2</a>	16.07.2007	28.07.2007	PRODUCTION	OIL/GAS
<a href="#">34/10-B-27</a>	23.05.1993	20.06.1993	PRODUCTION	OIL
<a href="#">34/10-B-27 A</a>	28.05.2004	21.06.2004	PRODUCTION	OIL/GAS
<a href="#">34/10-B-27 B</a>	11.11.2022	23.01.2023	PRODUCTION	OIL
<a href="#">34/10-B-28</a>	03.07.1993	24.08.1993	PRODUCTION	OIL
<a href="#">34/10-B-28 A</a>	13.08.2016	26.08.2016	INJECTION	WATER





# Factpages

## Field

Printed: 10.2.2025 - 23:56

<a href="#">34/10-B-29</a>	21.10.1993	09.12.1993	OBSERVATION	NOT APPLICABLE
<a href="#">34/10-B-29 A</a>	11.12.1993	25.12.1993	OBSERVATION	NOT APPLICABLE
<a href="#">34/10-B-29 B</a>	26.12.1993	15.04.1994	PRODUCTION	OIL
<a href="#">34/10-B-29 C</a>	29.11.2016	12.12.2016	INJECTION	WATER
<a href="#">34/10-B-30</a>	09.01.1994	27.05.1994	PRODUCTION	OIL
<a href="#">34/10-B-30 A</a>	15.08.2007	26.11.2008	PRODUCTION	OIL
<a href="#">34/10-B-30 B</a>	21.11.2017	26.11.2017	PRODUCTION	OIL
<a href="#">34/10-B-31</a>	16.09.1994	06.12.1994	PRODUCTION	OIL
<a href="#">34/10-B-31 A</a>	11.05.2001	21.05.2001	PRODUCTION	OIL/GAS
<a href="#">34/10-B-32</a>	15.12.1994	26.02.1995	PRODUCTION	OIL
<a href="#">34/10-B-33</a>	11.05.1995	21.06.1995	INJECTION	WATER
<a href="#">34/10-B-33 A</a>	23.11.2015	23.12.2015	INJECTION	WATER
<a href="#">34/10-B-34</a>	06.07.1995	09.08.1995	PRODUCTION	OIL/GAS
<a href="#">34/10-B-35</a>	13.08.1995	20.10.1995	INJECTION	WATER
<a href="#">34/10-B-35 A</a>	21.06.2012	13.07.2012	OBSERVATION	NOT APPLICABLE
<a href="#">34/10-B-35 B</a>	18.07.2012	07.02.2013	INJECTION	WATER
<a href="#">34/10-B-36</a>	30.10.1995	16.11.1995	PRODUCTION	OIL
<a href="#">34/10-B-36 A</a>	04.10.1996	10.11.1996	INJECTION	WATER
<a href="#">34/10-B-36 B</a>	25.07.2017	15.08.2017	INJECTION	WATER
<a href="#">34/10-B-37</a>	15.09.1996	16.02.1997	PRODUCTION	OIL
<a href="#">34/10-B-37 Y2</a>	12.02.2021	25.02.2021	PRODUCTION	OIL
<a href="#">34/10-B-38</a>	05.06.1997	01.12.1997	PRODUCTION	OIL
<a href="#">34/10-B-38 A</a>	24.08.2018	30.08.2018	PRODUCTION	OIL
<a href="#">34/10-B-39</a>	03.04.1998	29.08.1998	PRODUCTION	OIL
<a href="#">34/10-B-39 A</a>	06.12.1998	06.03.1999	INJECTION	WATER
<a href="#">34/10-B-39 B</a>	18.07.2003	26.07.2003	PRODUCTION	OIL
<a href="#">34/10-B-40</a>	01.09.1998	18.10.1998	PRODUCTION	OIL
<a href="#">34/10-B-40 A</a>	09.07.2001	22.07.2001	INJECTION	WATER
<a href="#">34/10-B-40 B</a>	15.11.2018	29.12.2018	INJECTION	WATER
<a href="#">34/10-B-41</a>	22.05.2000	08.10.2000	OBSERVATION	NOT APPLICABLE
<a href="#">34/10-B-41 A</a>	11.10.2000	23.11.2000	PRODUCTION	OIL/GAS
<a href="#">34/10-B-41 B</a>	04.01.2024	27.01.2024	PRODUCTION	OIL
<a href="#">34/10-B-42</a>	25.09.2001	27.10.2001	OBSERVATION	NOT APPLICABLE
<a href="#">34/10-B-42 A</a>	03.11.2001	08.01.2002	OBSERVATION	NOT APPLICABLE
<a href="#">34/10-B-42 B</a>	12.01.2002	06.02.2002	PRODUCTION	GAS/CONDENSATE
<a href="#">34/10-B-42 C</a>	16.02.2003	25.02.2003	PRODUCTION	DRY
<a href="#">34/10-B-42 D</a>	28.02.2003	13.03.2003	PRODUCTION	DRY
<a href="#">34/10-B-42 E</a>	07.10.2003	24.11.2003	PRODUCTION	OIL



## Factpages

### Field

Printed: 10.2.2025 - 23:56

<a href="#">34/10-B-42 F</a>	04.12.2003	14.01.2004	PRODUCTION	OIL
<a href="#">34/10-B-42 G</a>	21.11.2019	13.02.2020	INJECTION	WATER
<a href="#">34/10-C-1</a>	11.10.1989	13.12.1989	PRODUCTION	OIL
<a href="#">34/10-C-1 A</a>	03.03.2009	20.07.2009	PRODUCTION	OIL/GAS
<a href="#">34/10-C-2</a>	01.01.1990	22.02.1990	PRODUCTION	OIL/GAS
<a href="#">34/10-C-3</a>	04.03.1990	04.06.1990	PRODUCTION	OIL
<a href="#">34/10-C-4</a>	24.06.1990	30.01.1991	INJECTION	CUTTINGS
<a href="#">34/10-C-4 A</a>	03.12.2017	30.01.2018	INJECTION	WATER
<a href="#">34/10-C-5</a>	02.09.1990	21.12.1990	PRODUCTION	OIL
<a href="#">34/10-C-5 A</a>	21.07.2004	25.08.2004	PRODUCTION	OIL
<a href="#">34/10-C-5 B</a>	27.08.2004	17.09.2004	INJECTION	GAS
<a href="#">34/10-C-6</a>	11.02.1991	09.04.1991	PRODUCTION	OIL
<a href="#">34/10-C-6 A</a>	13.12.2009	25.07.2010	PRODUCTION	OIL
<a href="#">34/10-C-6 B</a>	15.04.2018	06.06.2018	PRODUCTION	OIL
<a href="#">34/10-C-7</a>	18.04.1991	14.06.1991	PRODUCTION	OIL
<a href="#">34/10-C-7 A</a>	02.09.2016	13.06.2017	PRODUCTION	OIL/GAS
<a href="#">34/10-C-8</a>	27.06.1991	11.08.1991	PRODUCTION	OIL
<a href="#">34/10-C-8 A</a>	09.10.2015	21.10.2015	PRODUCTION	OIL
<a href="#">34/10-C-8 B</a>	20.11.2018	12.12.2018	INJECTION	WATER/GAS
<a href="#">34/10-C-9</a>	19.08.1991	16.01.1992	PRODUCTION	OIL
<a href="#">34/10-C-9 A</a>	01.05.2005	14.07.2005	PRODUCTION	OIL
<a href="#">34/10-C-9 B</a>	08.07.2017	23.08.2017	INJECTION	GAS
<a href="#">34/10-C-10</a>	23.10.1991	15.03.1992	INJECTION	WATER
<a href="#">34/10-C-11</a>	19.01.1992	28.02.1992	PRODUCTION	OIL
<a href="#">34/10-C-11 A</a>	21.08.2018	20.09.2018	PRODUCTION	OIL
<a href="#">34/10-C-12</a>	28.03.1992	04.05.1992	INJECTION	WATER
<a href="#">34/10-C-13</a>	17.05.1992	18.06.1992	INJECTION	WATER
<a href="#">34/10-C-14</a>	13.08.1992	29.10.1992	PRODUCTION	OIL/GAS
<a href="#">34/10-C-15</a>	13.11.1992	03.12.1992	OBSERVATION	NOT APPLICABLE
<a href="#">34/10-C-15 A</a>	04.12.1992	30.01.1993	PRODUCTION	OIL
<a href="#">34/10-C-15 B</a>	07.04.2003	15.04.2003	PRODUCTION	DRY
<a href="#">34/10-C-15 C</a>	16.04.2003	25.04.2003	PRODUCTION	OIL/GAS
<a href="#">34/10-C-16</a>	21.02.1993	22.09.1993	INJECTION	GAS
<a href="#">34/10-C-17</a>	22.03.1993	28.05.1993	INJECTION	WATER
<a href="#">34/10-C-18</a>	16.12.1993	13.02.1994	INJECTION	WATER
<a href="#">34/10-C-19</a>	01.10.1993	24.11.1993	PRODUCTION	OIL/GAS
<a href="#">34/10-C-20</a>	06.04.1994	25.09.1994	PRODUCTION	OIL
<a href="#">34/10-C-20 AY1</a>	21.04.1996	17.05.1996	PRODUCTION	OIL
<a href="#">34/10-C-20 AY2</a>	20.12.2006	15.02.2007	INJECTION	WATER
<a href="#">34/10-C-21</a>	19.02.1994	06.07.1994	INJECTION	WATER
<a href="#">34/10-C-22</a>	03.03.1994	30.03.1994	PRODUCTION	OIL/GAS
<a href="#">34/10-C-23</a>	05.10.1994	30.10.1994	PRODUCTION	OIL



## Factpages

### Field

Printed: 10.2.2025 - 23:56

<a href="#">34/10-C-23 A</a>	01.11.1994	17.11.1994	PRODUCTION	OIL
<a href="#">34/10-C-23 B</a>	08.05.2003	25.05.2003	PRODUCTION	DRY
<a href="#">34/10-C-23 C</a>	28.05.2003	16.06.2003	INJECTION	GAS
<a href="#">34/10-C-24</a>	23.11.1994	12.01.1995	PRODUCTION	OIL/GAS
<a href="#">34/10-C-25</a>	24.01.1995	11.03.1995	PRODUCTION	OIL
<a href="#">34/10-C-26</a>	16.03.1995	30.03.1995	PRODUCTION	OIL
<a href="#">34/10-C-26 A</a>	19.03.2003	29.03.2003	PRODUCTION	OIL/GAS
<a href="#">34/10-C-27</a>	06.04.1995	14.05.1995	PRODUCTION	OIL/GAS
<a href="#">34/10-C-28</a>	23.05.1995	06.06.1995	PRODUCTION	OIL/GAS
<a href="#">34/10-C-28 A</a>	23.02.2023	27.03.2023	OBSERVATION	NOT APPLICABLE
<a href="#">34/10-C-29</a>	11.08.1995	28.09.1995	PRODUCTION	OIL/GAS
<a href="#">34/10-C-30</a>	13.10.1995	14.11.1995	PRODUCTION	OIL
<a href="#">34/10-C-30 A</a>	27.11.2012	08.02.2013	INJECTION	CUTTINGS
<a href="#">34/10-C-31</a>	27.11.1995	06.01.1996	INJECTION	WATER
<a href="#">34/10-C-32</a>	23.01.1996	10.03.1996	PRODUCTION	OIL
<a href="#">34/10-C-32 A</a>	18.09.2015	28.09.2015	PRODUCTION	OIL/GAS
<a href="#">34/10-C-33</a>	18.03.1996	30.03.1996	PRODUCTION	OIL/GAS
<a href="#">34/10-C-34</a>	08.05.1996	19.06.1996	OBSERVATION	NOT APPLICABLE
<a href="#">34/10-C-34 A</a>	20.06.1996	02.08.1996	PRODUCTION	OIL/GAS
<a href="#">34/10-C-35</a>	11.08.1996	05.03.1997	PRODUCTION	OIL/GAS
<a href="#">34/10-C-36</a>	05.10.1996	26.05.1997	OBSERVATION	NOT APPLICABLE
<a href="#">34/10-C-36 A</a>	30.05.1997	31.08.1997	PRODUCTION	OIL
<a href="#">34/10-C-36 B</a>	11.09.2019	15.02.2020	PRODUCTION	OIL
<a href="#">34/10-C-37</a>	06.02.1998	07.04.1998	INJECTION	WATER
<a href="#">34/10-C-38</a>	28.04.1998	21.05.1999	PRODUCTION	OIL
<a href="#">34/10-C-38 A</a>	12.05.2015	21.06.2015	OBSERVATION	NOT APPLICABLE
<a href="#">34/10-C-38 B</a>	24.06.2015	05.11.2015	PRODUCTION	OIL
<a href="#">34/10-C-38 C</a>	03.03.2018	14.03.2018	INJECTION	WATER
<a href="#">34/10-C-39</a>	20.01.2000	14.03.2000	INJECTION	WATER
<a href="#">34/10-C-40</a>	30.06.1998	19.11.1998	PRODUCTION	OIL
<a href="#">34/10-C-40 A</a>	29.09.2017	14.10.2017	PRODUCTION	OIL
<a href="#">34/10-C-41</a>	08.01.1999	05.08.1999	PRODUCTION	OIL
<a href="#">34/10-C-41 A</a>	07.03.2003	12.03.2003	INJECTION	GAS
<a href="#">34/10-C-42</a>	01.09.1999	27.12.1999	PRODUCTION	OIL/GAS
<a href="#">34/10-C-43</a>	16.03.2002	28.02.2004	PRODUCTION	OIL/GAS
<a href="#">34/10-C-44</a>	25.12.2000	07.02.2001	OBSERVATION	NOT APPLICABLE
<a href="#">34/10-C-44 A</a>	09.02.2001	26.02.2001	INJECTION	GAS
<a href="#">34/10-C-45</a>	06.11.2002	17.01.2003	PRODUCTION	GAS
<a href="#">34/10-C-47</a>	28.11.2005	16.03.2006	PRODUCTION	OIL
<a href="#">34/10-C-47 A</a>	26.05.2023	18.09.2023	INJECTION	WATER/GAS



<a href="#">34/10-C-50</a>	14.02.2016	11.03.2016	INJECTION	WATER
----------------------------	------------	------------	-----------	-------

**Wellbores - other**

Wellbore name	Entered date	Completed date	Purpose	Status
---------------	--------------	----------------	---------	--------